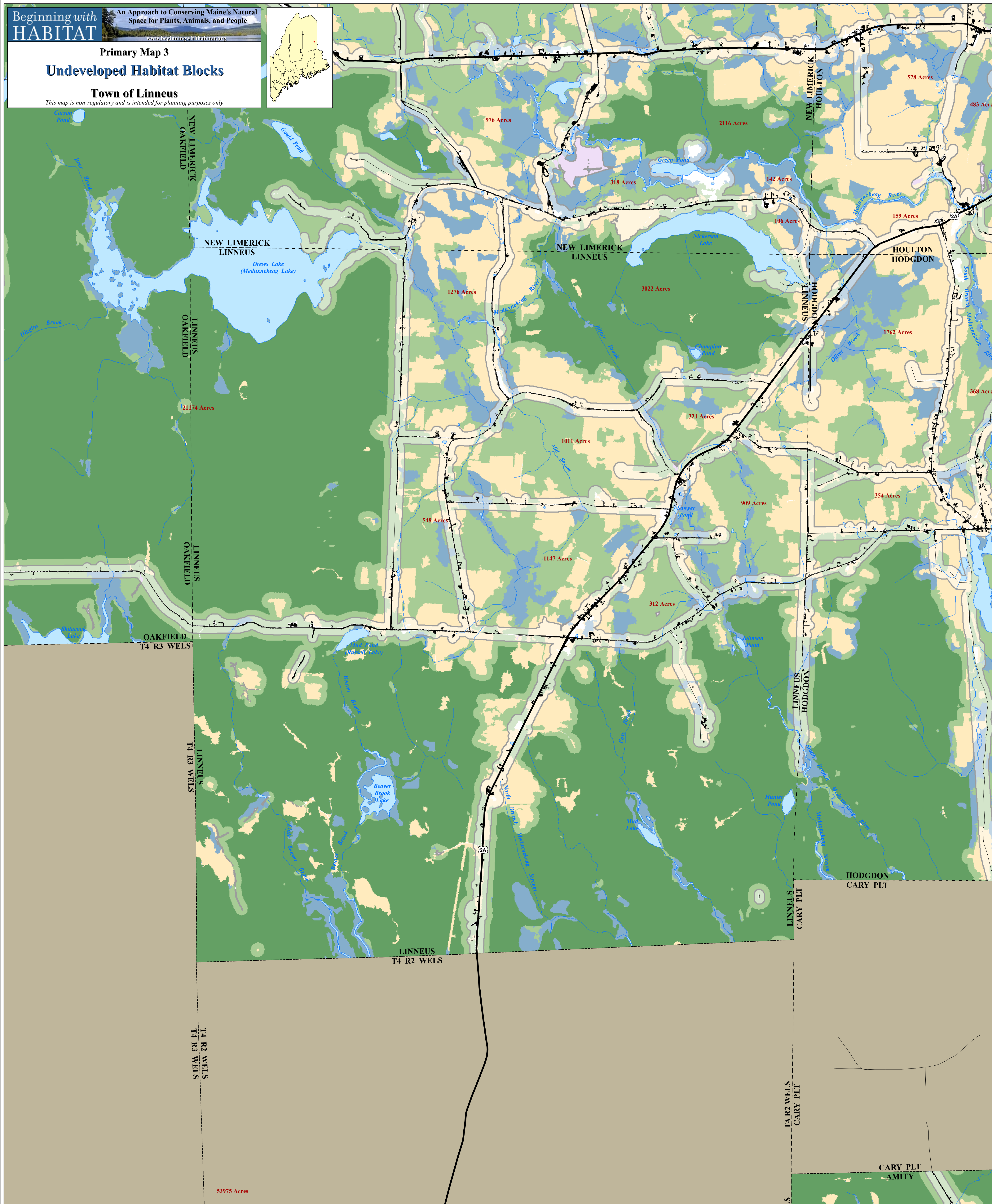
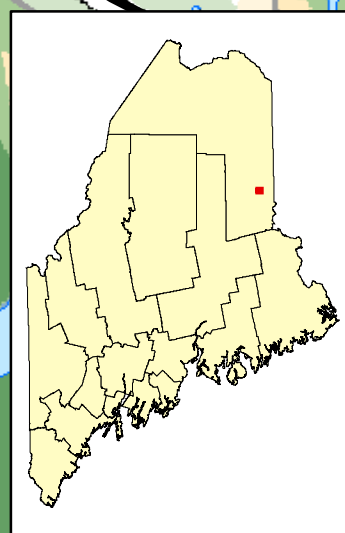


Primary Map 3  
**Undeveloped Habitat Blocks**  
Town of Linneus  
*This map is non-regulatory and is intended for planning purposes only*



**LEGEND**

The purpose of this map is to highlight those areas that are likely to provide the best opportunities locally to conserve large relatively undisturbed blocks of habitat. By slowing the further fragmentation of these areas, towns, and land trusts, can effectively keep locally common species common and maintain traditional outdoor recreation opportunities for future generations. By depicting a 250 to 500 foot buffer around improved roads and areas identified as developed (representing the general extent of direct and indirect habitat disturbance) this map highlights large areas of relatively intact habitat. Blocks  $\geq 100$  acres are labeled with their size in acres. Local knowledge of the condition and use of roads should be used to more accurately evaluate habitat block size and extent of disturbance.

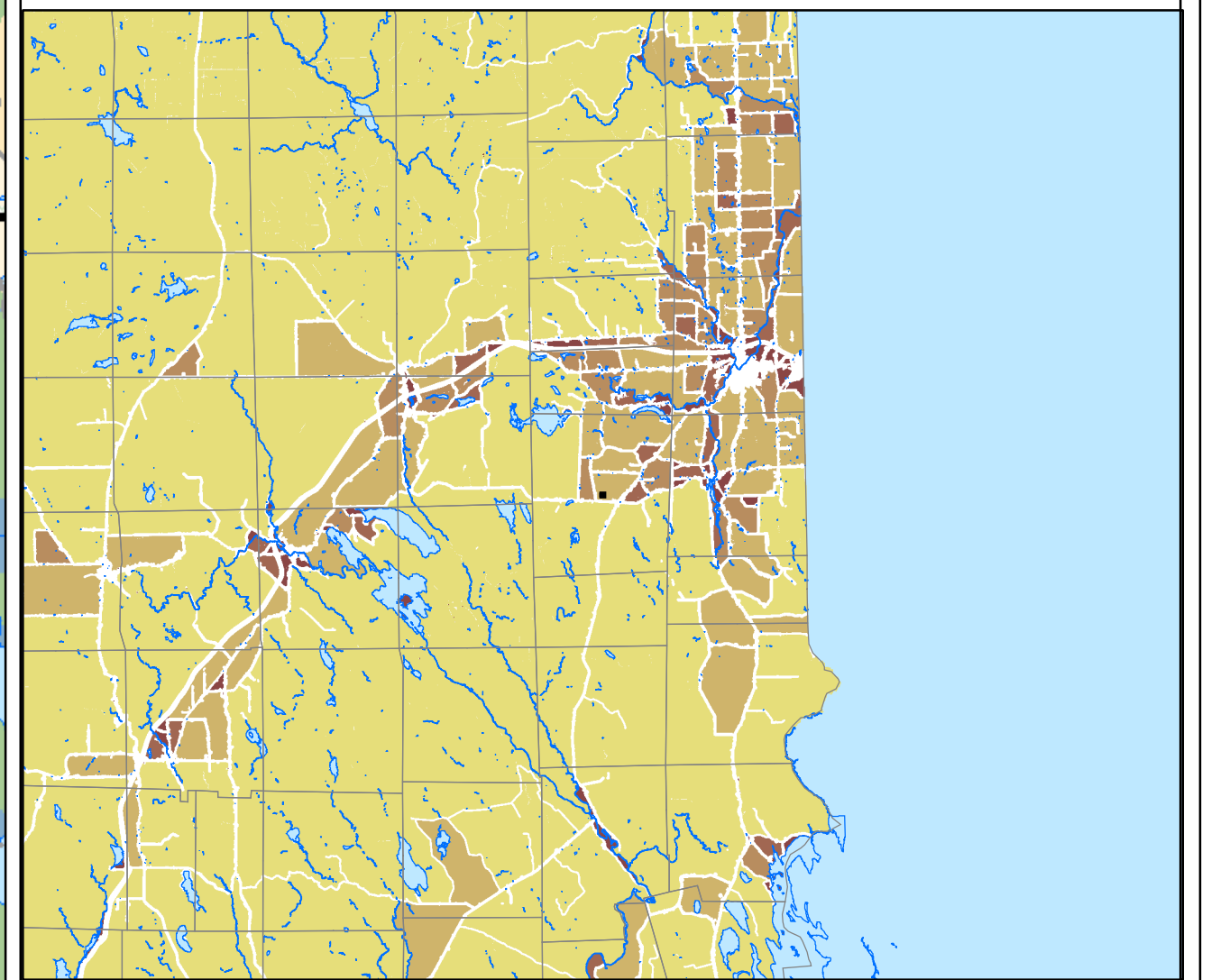
Within the Undeveloped Habitat Blocks, the general landuse/landcover is shown (refer to legend). Areas shown as being forested are likely to contain multiple stand types, stand ages, and conditions.

- Organized Township Boundary
- Unorganized Township (Beginning with Habitat does not provide data for unorganized townships)
- Developed- Area of impervious surfaces including building and roads
- Streams and Brooks
- Ocean, Lakes, Ponds, and Rivers

- HABITAT BLOCKS**
- Undeveloped Habitat Block  
These habitat blocks will contain several different habitat types (see habitat types listed below). Acreage within each block is listed on the map with red text.
  - Development Buffer (white transparency)  
250-500 foot buffer of development (based on intensity).

- LANDCOVER CATEGORIES WITHIN UNDEVELOPED HABITAT BLOCKS**
- Agricultural/Grass/Shrub Lands  
Landcover types where human intervention maintains an open landscape dominated by grasses, row crops, or lowbush blueberry.
  - Wetlands  
Wetlands as identified in the 1980's by the National Wetland Inventory of the U.S. Fish & Wildlife Service. Wetlands delineated by aerial photo interpretation and may be under represented.
  - Forest Area < 300 feet from other (non-forested) habitat OR < 500 acres  
This category is likely to contain a greater edge to interior habitat ratio.
  - Forest Area > 300 feet from other (non-forested) habitat AND  $\geq 500$  acres  
This category is likely to support the most interior habitat.
  - Development (white solid)  
Small areas that are not covered by the above 'Developed' layer.
  - Other  
Exposed rock/talus, alpine tundra; may include industrial gravel pits.

**REGIONAL Undeveloped Block Sizes**



- Development Area Buffer
  - 0 - 250 acres
  - 250-500 acres
  - 500-1,000 acres
  - 1,000-5,000 acres
  - > 5,000 acres
- Inset Scale - 1:500,000  
0 5 10 15 20 25 Miles

**Data Sources**

**DATA SOURCE INFORMATION**  
*(note: italicized file names can be downloaded from Maine Office of GIS)*

**TOWNSHIP BOUNDARIES**  
Maine Office of GIS (2006); *metwp24*

**ROADS**  
Maine Office of GIS, Maine Department of Transportation (2005); *medotpw*

**HYDROLOGY**  
Maine Office of GIS, U.S. Geological Survey (2004); *hyd24*

**DEVELOPED**  
Maine Office of GIS, Maine Department of Environmental Protection (contact agency for this multiple agency collaboration) (2005); *imperv*

**UNDEVELOPED HABITAT BLOCKS, DEVELOPMENT BUFFER**  
Maine Dept. of Inland Fisheries & Wildlife, Maine Natural Areas Program

**LANDCOVER**  
Maine Office of GIS, Maine Department of Environmental Protection (contact agency for this multiple agency collaboration) (2006); *melcd*

**DATA SOURCE CONTACT INFORMATION**  
Maine Office of GIS- <http://apollo.gis.state.me.us/catalog>  
Maine Natural Areas Program- <http://www.maine.gov/doc/nrimc/mnap/>  
Maine Dept. of Inland Fisheries & Wildlife- <http://www.maine.gov/ifw/>  
Maine Department of Transportation- <http://www.maine.gov/ndot/>  
Maine Department of Environmental Protection- <http://www.maine.gov/dep/>

**DIGITAL DATA REQUEST**  
To request digital data for a town or organization, visit our website.  
[http://www.beginningwithhabitat.org/the\\_maps/gis\\_data\\_request.html](http://www.beginningwithhabitat.org/the_maps/gis_data_request.html)