



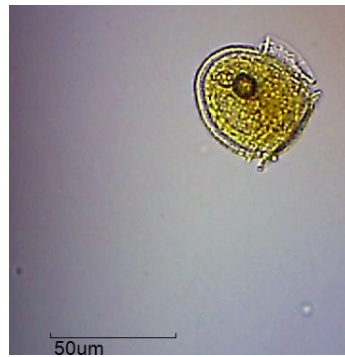
Quick Visual Guide to Common Phytoplankton of Blue Hill Bay



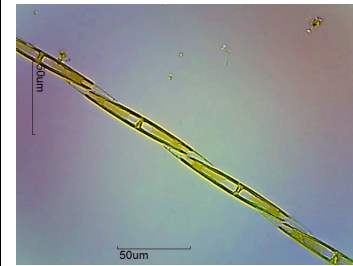
Alexandrium



Dinophysis



Dinophysis



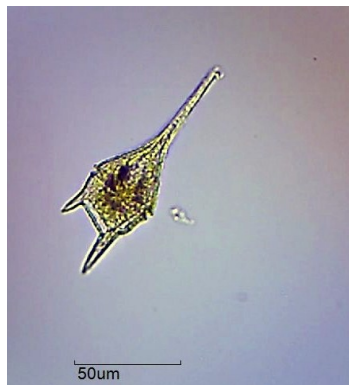
Pseudo-nitzschia



Asterionellopsis



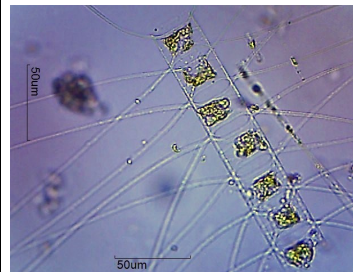
Ceratium fusus



Ceratium lineatum



Ceratium longipes



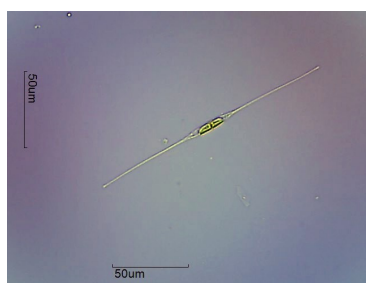
Chaetoceros



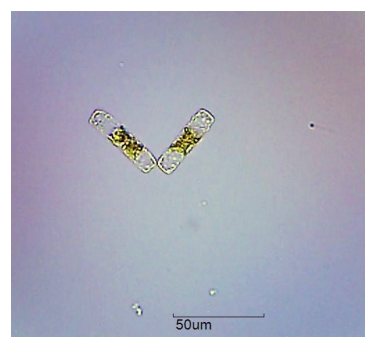
Corethron



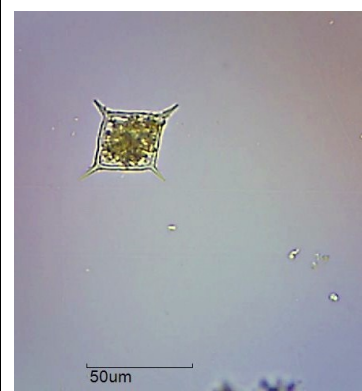
Coscinodiscus



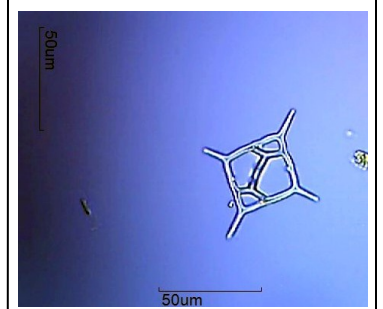
Cylindrotheca



Dactyliosolen



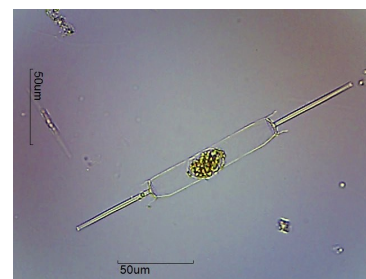
Dictyocha



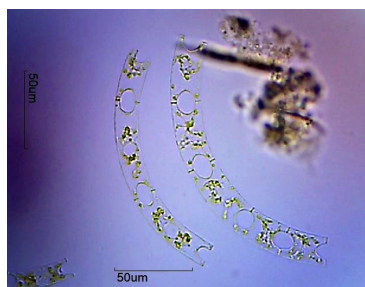
Dictyocha



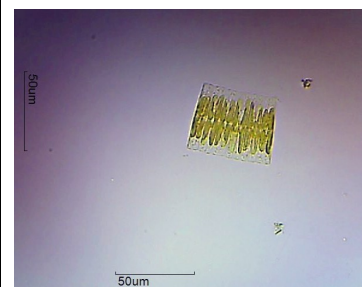
Dissodinium



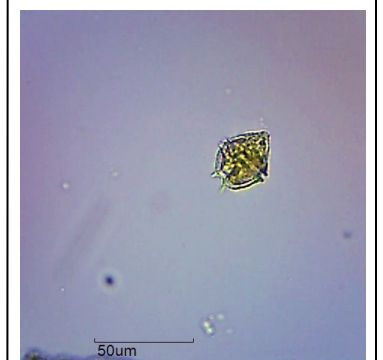
Ditylum



Eucampia



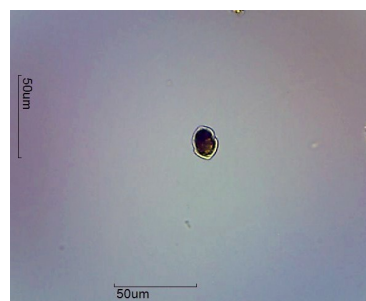
Fragillaria



Gonyaulax



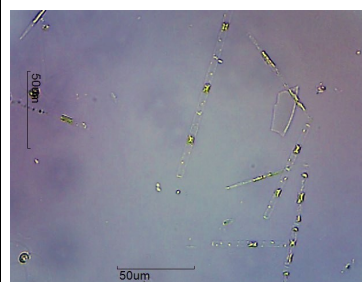
Guinardia



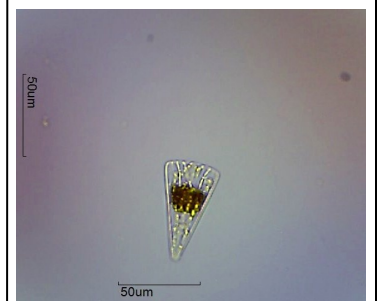
Gyrodinium



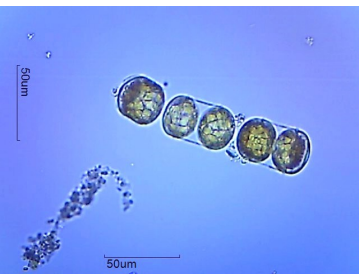
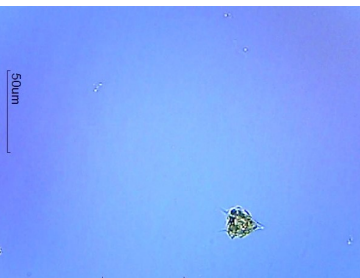

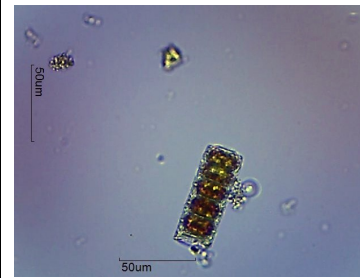
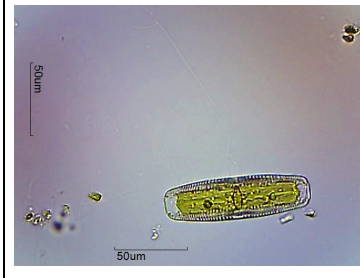


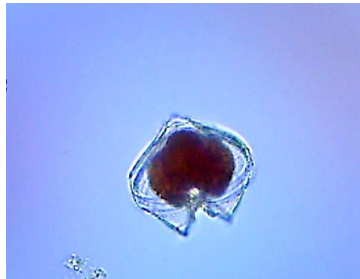
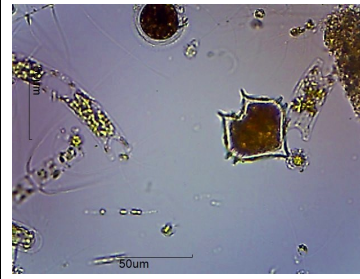

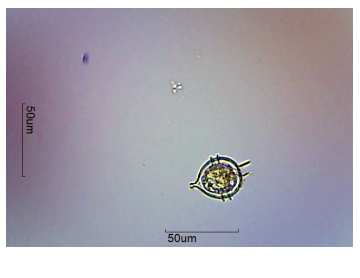

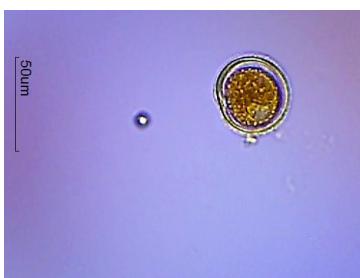
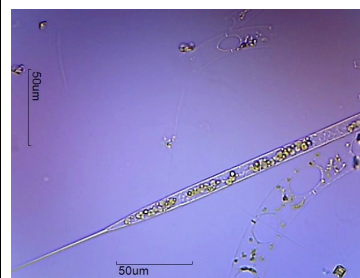
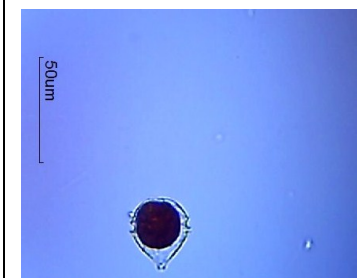
Gyrosigma



Leptocylindrus

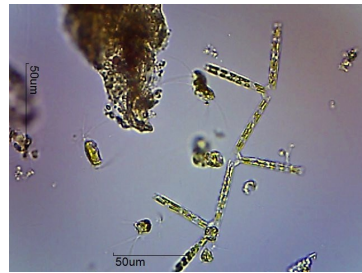


Licomophora

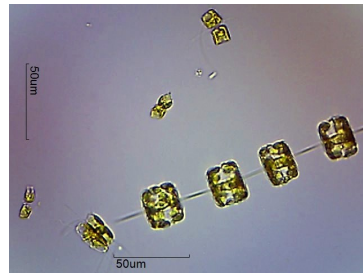
 <p><i>Melosira</i></p>	 <p><i>Minuscula</i></p>	 <p><i>Navicula</i></p>	 <p><i>Paralia</i></p>	 <p><i>Pinnularia</i></p>
 <p><i>Pleurosigma</i></p>	 <p><i>Proocentrum micans</i></p>	 <p><i>Protoperidinium</i></p>	 <p><i>Protoperidinium</i></p>	 <p><i>Protoperidinium</i></p>
 <p><i>Protoperidinium steinii</i></p>	 <p><i>Protoperidinium brevipes</i></p>	 <p><i>Pyrophacus</i></p>	 <p><i>Rhizosolenia</i></p>	 <p><i>Scrippsiella</i></p>



Skeletonema



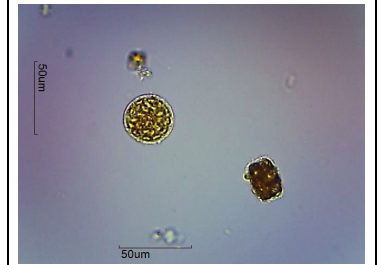
Thalassionema



Thalassiosira



Thalassiosira



Thalassiosira

NOT PHYTOPLANKTON



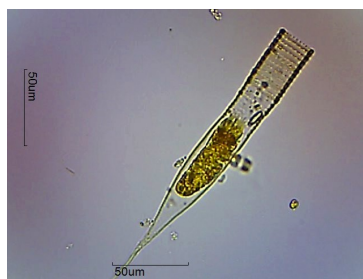
Pollen

NOT PHYTOPLANKTON



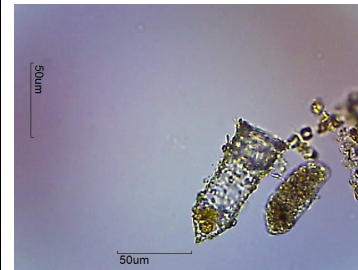
Trichome

NOT PHYTOPLANKTON



Tintinnid

NOT PHYTOPLANKTON



Tintinnid

NOT PHYTOPLANKTON



Either Rotifer or Tintinnid