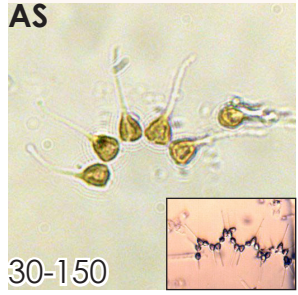
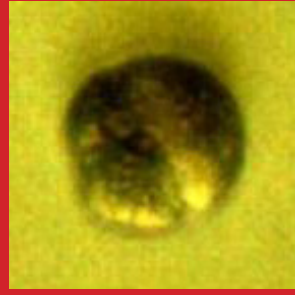
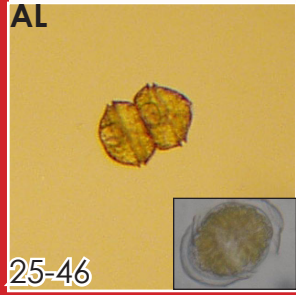


Phytoplankton Identification Key

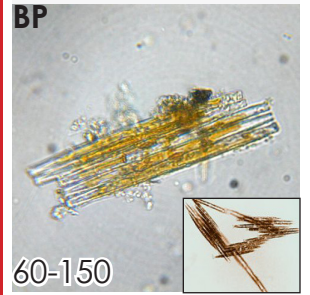
Asterionellopsis spp.



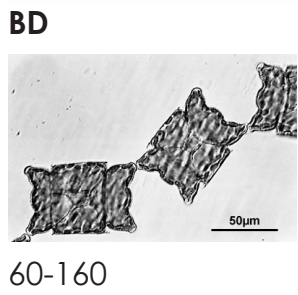
Alexandrium spp.



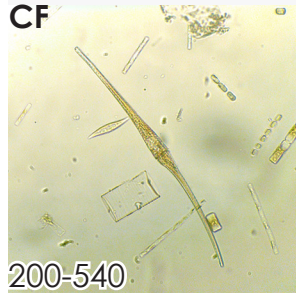
Bacillaria spp.



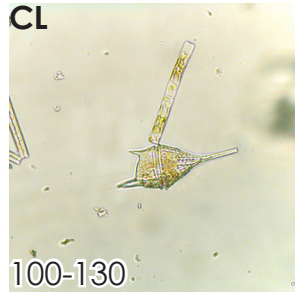
Biddulphia spp.



Ceratium fusus



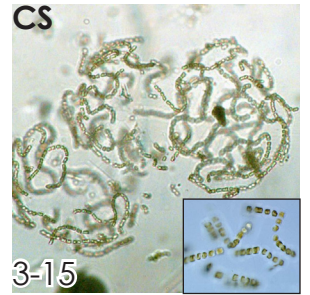
Ceratium lineatum



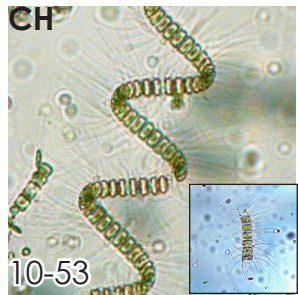
Ceratium longpipes



Chaetoceros socialis



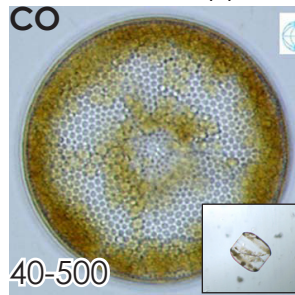
Chaetoceros spp.



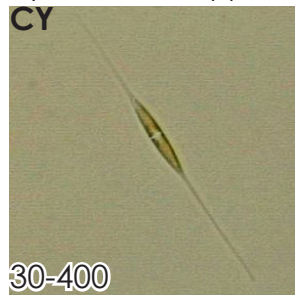
Corethron spp.



Coscinodiscus spp.



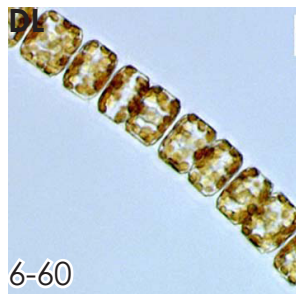
Cylindrotheca spp.



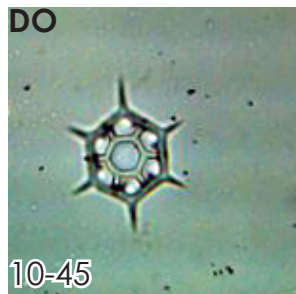
Dactyliosolen spp.



Detonula spp.



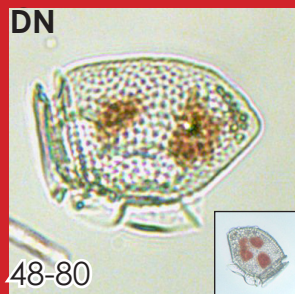
Dictyocha spp.



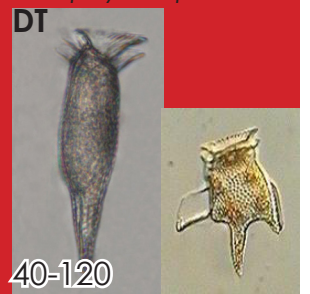
Dinophysis acuminata



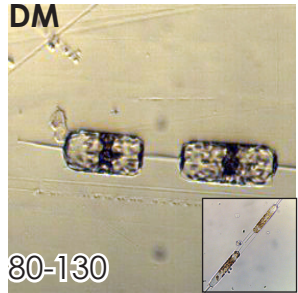
Dinophysis norvegica



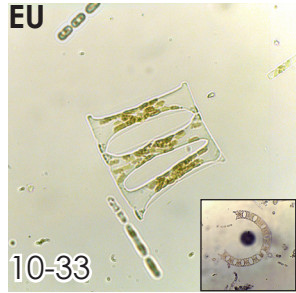
Dinophysis tripos



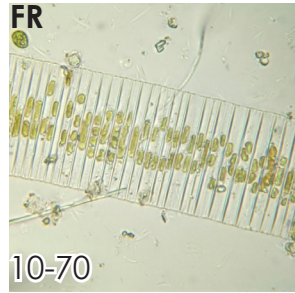
Ditylum spp.



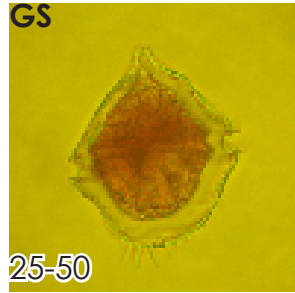
Eucampia spp.



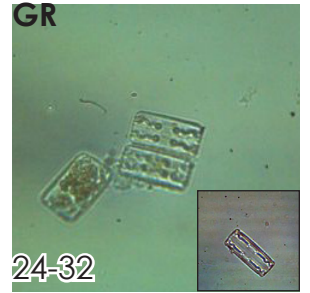
Fragillaria spp.



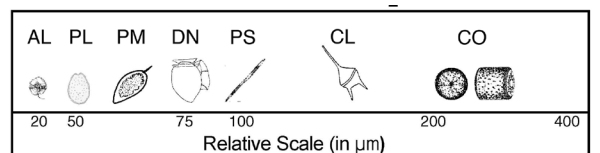
Gonyaulax spinifera



Grammatophora spp.



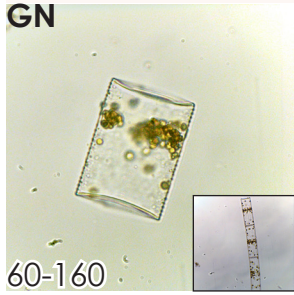
All sizes given for single cells, in microns.



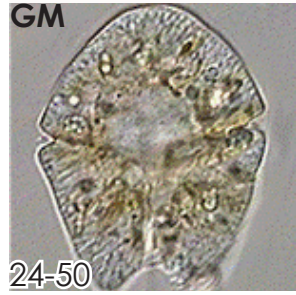
Harmful Species

Phytoplankton Identification Key

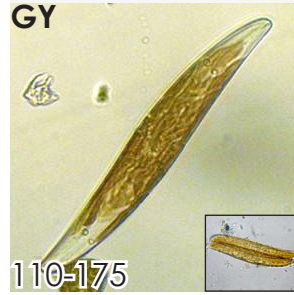
Guinardia spp.



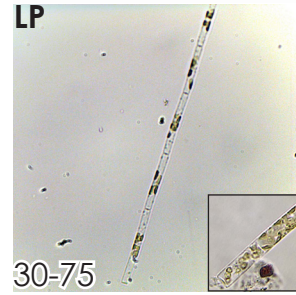
Gymnodinium spp.



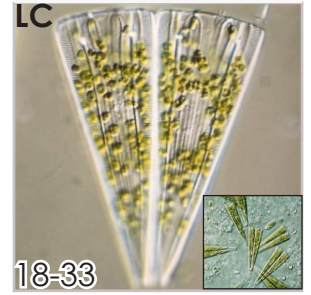
Gyrosigma spp.



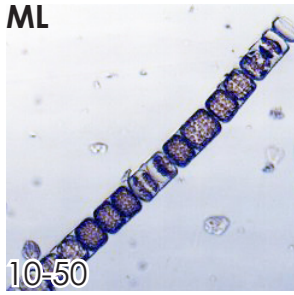
Leptocylindrus spp.



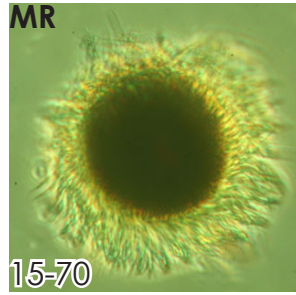
Licmophora spp.



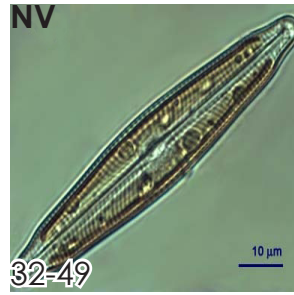
Melosira spp.



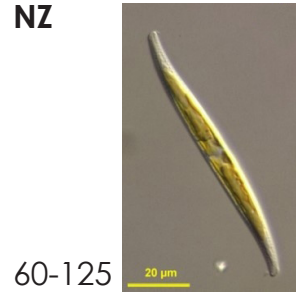
Mesodinium rubrum



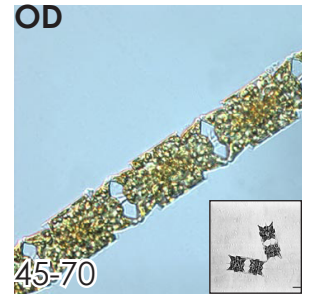
Navicula spp.



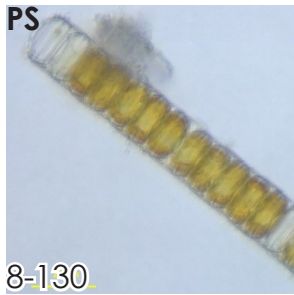
Nitzschia spp.



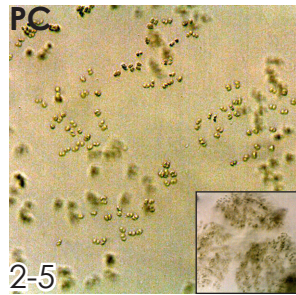
Odontella spp.



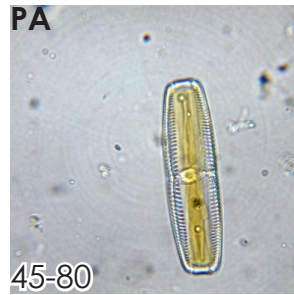
Paralia sulcata



Phaeocystis spp.



Pinnularia spp.



Pleurosigma spp.



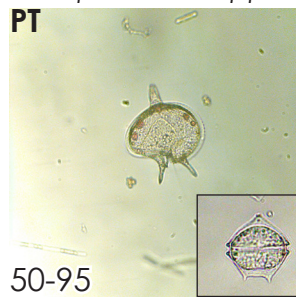
Prorocentrum lima



Prorocentrum micans



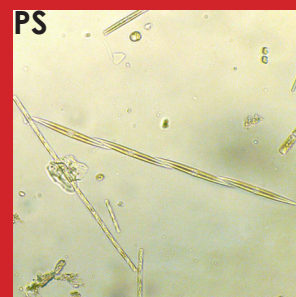
Protoperidinium spp.



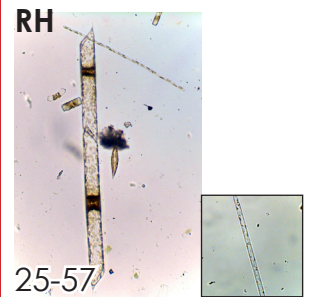
Pseudonitzschia spp.



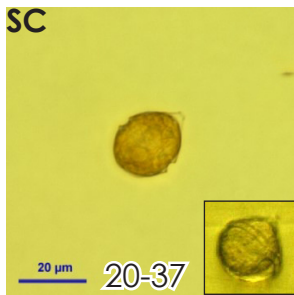
Thalassiosira spp.



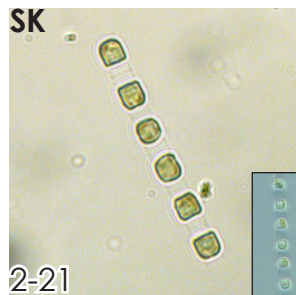
Rhizosolenia spp.



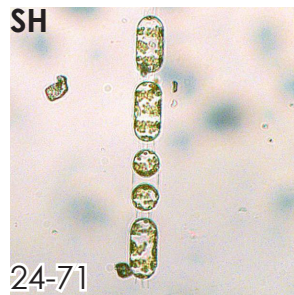
Scrippsiella spp.



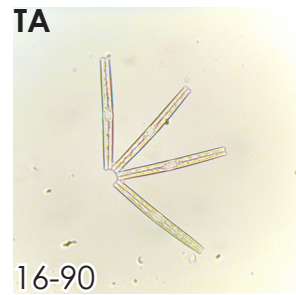
Skeletonema spp.



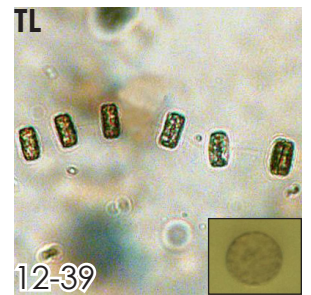
Stephanopsis spp.



Thalassionema spp.



Thalassiosira spp.



Credits: AS-MPMP; AL1-MDIWQC; ALinset1-A.Bex; AL2-MPMP; AL3-MPMP; BP-MPMP; BD-Sabine Ehmen, (Plankton*Net Data Provider at the Alfred Wegener Institute for Polar and Marine Research; hereafter 'PN'); CF,CL-MPMP; CP-L. Greenlaw, MPMP; CS-MPMP, inset - Mona Hoppenrath, (PN); hdl:10013/de.awi.planktonnet.image.12630; CH, CR-MPMP; CO-Mona Hoppenrath (PN) hdl:10013/de.awi.planktonnet.image.12639, inset -MPMP; CY-F. Jouenne, University of Caen (PN); DS-MPMP; DL-Mona Hoppenrath (PN) hdl:10013/de.awi.planktonnet.image.12646; DO-L. Greenlaw, MPMP; -DA-T. Morozova (PN) hdl:10013/de.awi.planktonnet.image.14233 inset - L. Greenlaw, MPMP; DN-MPMP; DT-1) Manfred Kaufman (PN); DM,EU- MPMP; FR-Scott Feindel, University of Maine; GS-(PN); GR-L. Greenlaw, MPMP; GN-MPMP; GM-http://www.smhi.se/oceanografi/occe_info_data/plankton_checklist/ssshome.htm; GY-MPMP; LP-MPMP, inset - Mona Hoppenrath, (PN); hdl:10013/de.awi.planktonnet.image.12698; LC-all - Chantal Billard, University of Caen (PN); ML-MPMP; MR-PIMAR (PN); NV-A. Alster and T. Zohary, Kinneret Limnological Laboratory (PN); NZ-F. Jouenne (PN); OD-Mona Hoppenrath (PN) hdl:10013/de.awi.planktonnet.image.13515 inset - Gerhard Drebes (PN); PS-D. Vault (PN); PC, PA-MPMP; PG-top - MPMP, inset1 - F. Jouenne (PN), inset2 - I. Probert, University of Caen (PN); PL, PM,PT-MPMP; PS-1 - Gerhard Drebes (PN) hdl:10013/de.awi.planktonnet.image.12763, 2)MPMP; RH-MPMP; SC-F. Jouenne, University of Caen (PN), inset - MPMP; SK-MPMP, inset -BM-Frazao (PN); SP, TA, TL-MPMP