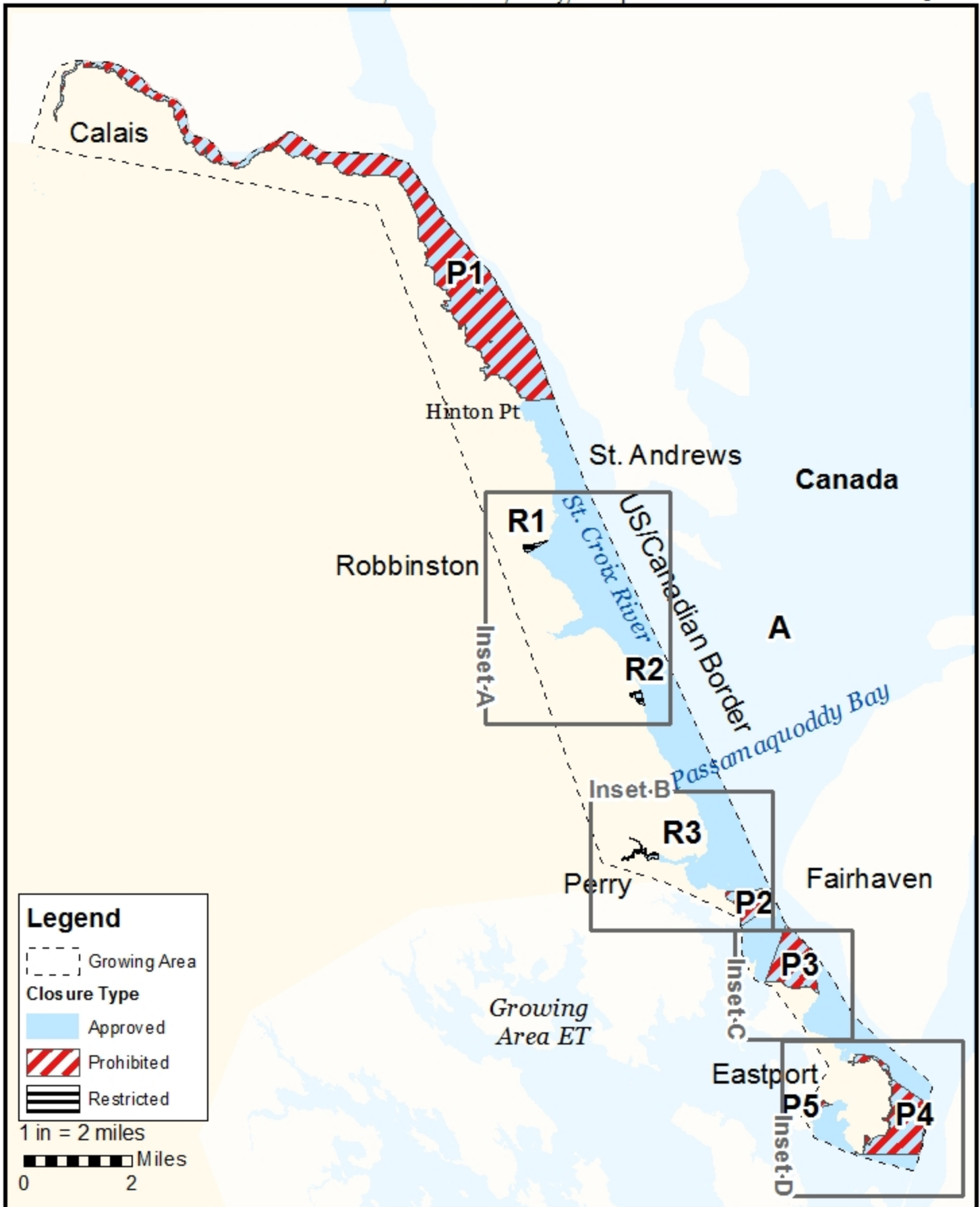


Maine Department of Marine Resources

Growing Area EU, Insets A - D

Calais, Robbinston, Perry, Eastport

July 22, 2021



Legend

- Growing Area
- Closure Type
 - Approved
 - Prohibited
 - Restricted

1 in = 2 miles

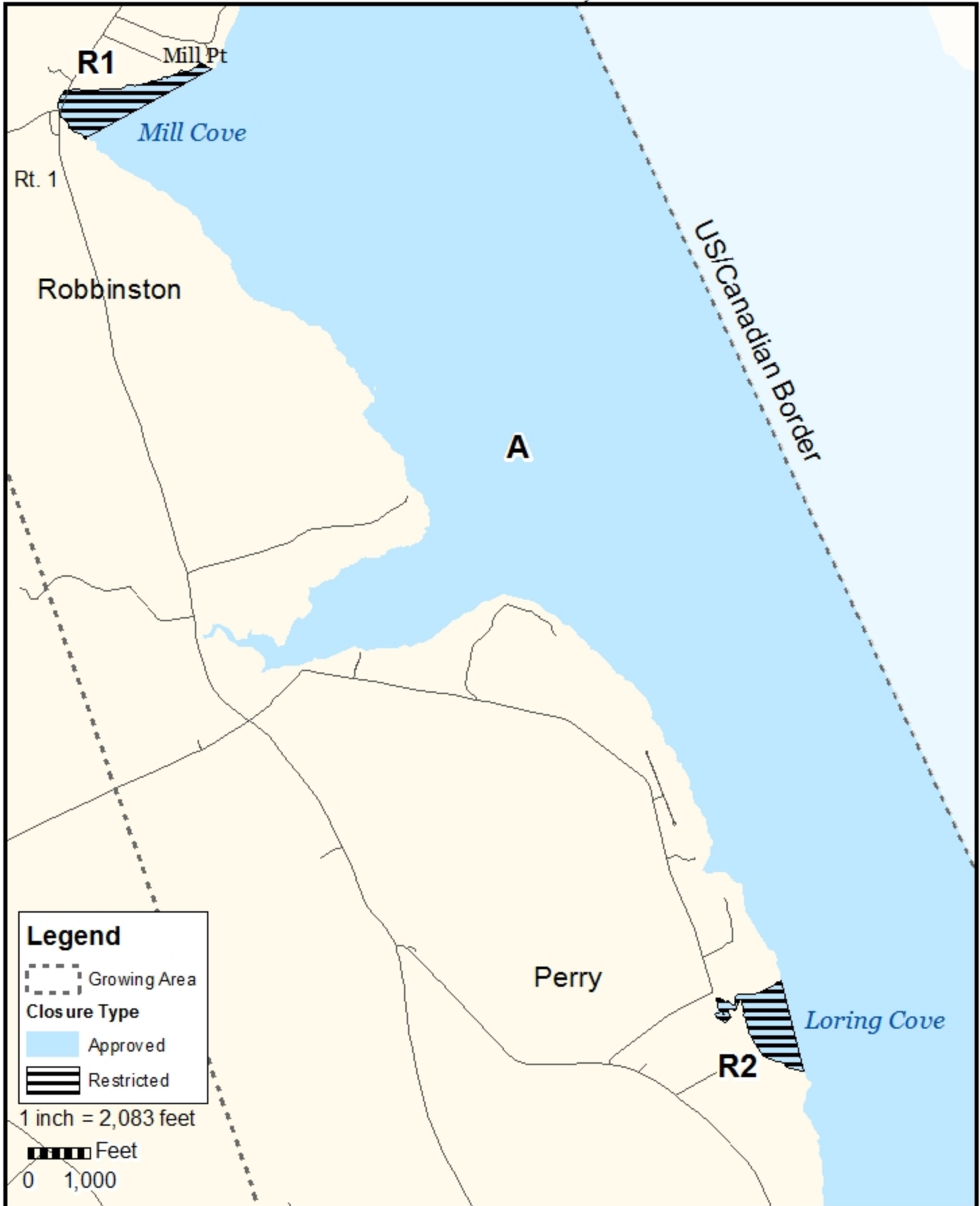
0 2 Miles

This map is provided as a courtesy. Read the provided legal notice for closure details. Closures are not shown outside of the designated growing area. Maritime navigational aids are for reference only and are not suitable for maritime navigation.

Maine Department of Marine Resources

Growing Area EU, Inset A
Robbinston and Perry

July 22, 2021

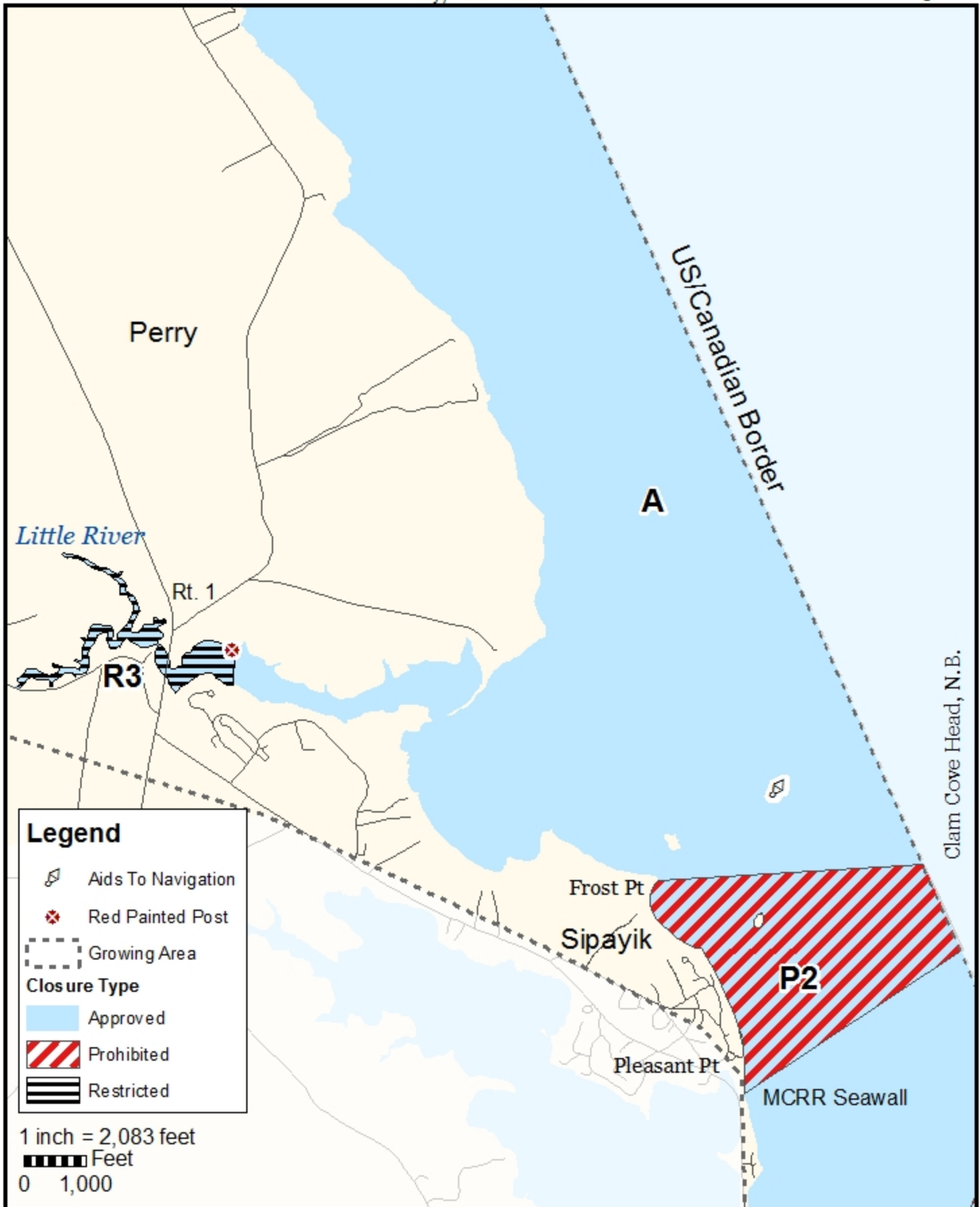


This map is provided as a courtesy. Read the provided legal notice for closure details. Closures are not shown outside of the designated growing area. Maritime navigational aids are for reference only and are not suitable for maritime navigation.

Maine Department of Marine Resources

Growing Area EU, Inset B
Perry, Pleasant Point

July 22, 2021



Legend

- Aids To Navigation
- Red Painted Post
- Growing Area

Closure Type

- Approved
- Prohibited
- Restricted

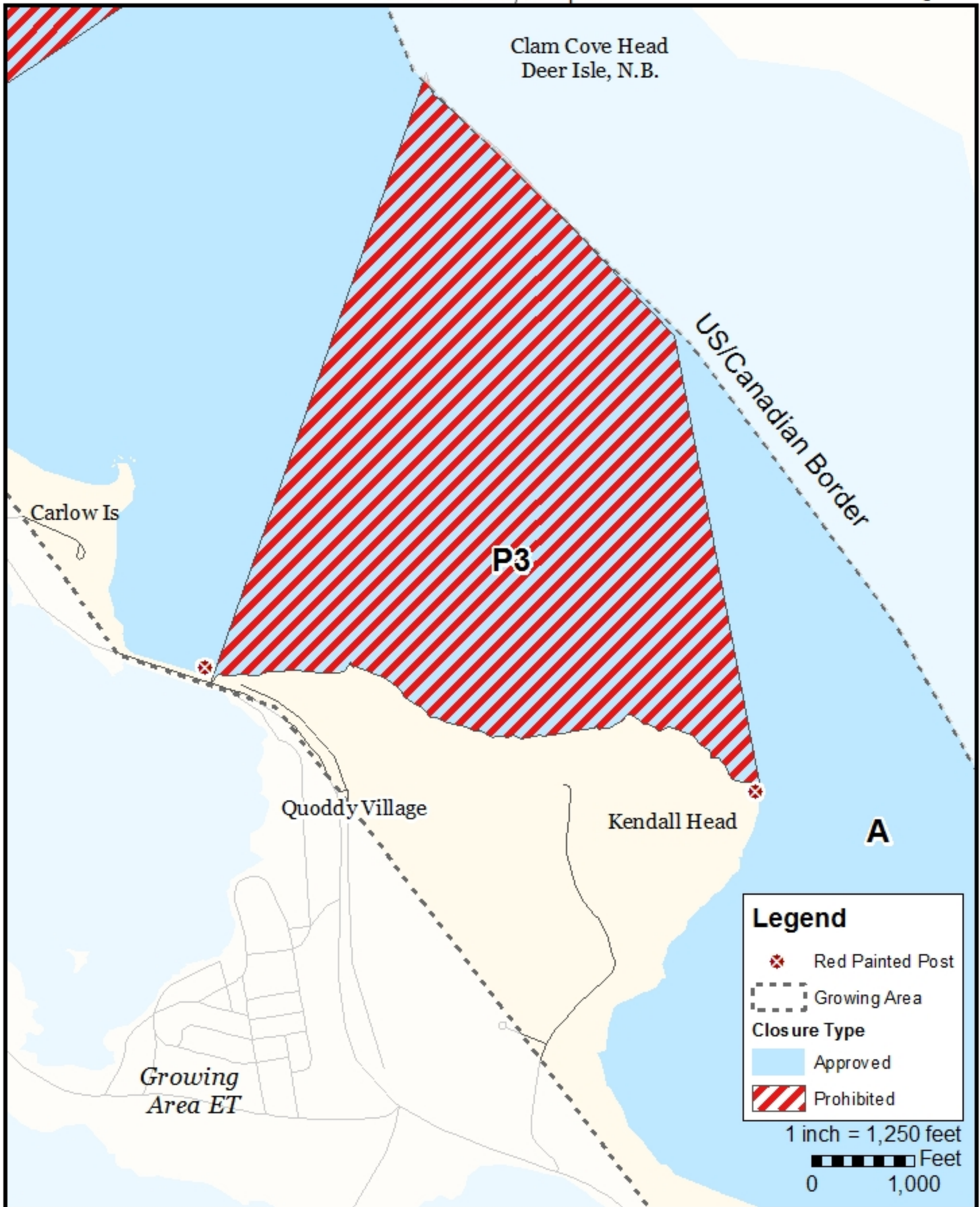
1 inch = 2,083 feet
 Feet
0 1,000

This map is provided as a courtesy. Read the provided legal notice for closure details. Closures are not shown outside of the designated growing area. Maritime navigational aids are for reference only and are not suitable for maritime navigation.

Maine Department of Marine Resources

Growing Area EU, Inset C
Pleasant Point, Eastport

July 22, 2021

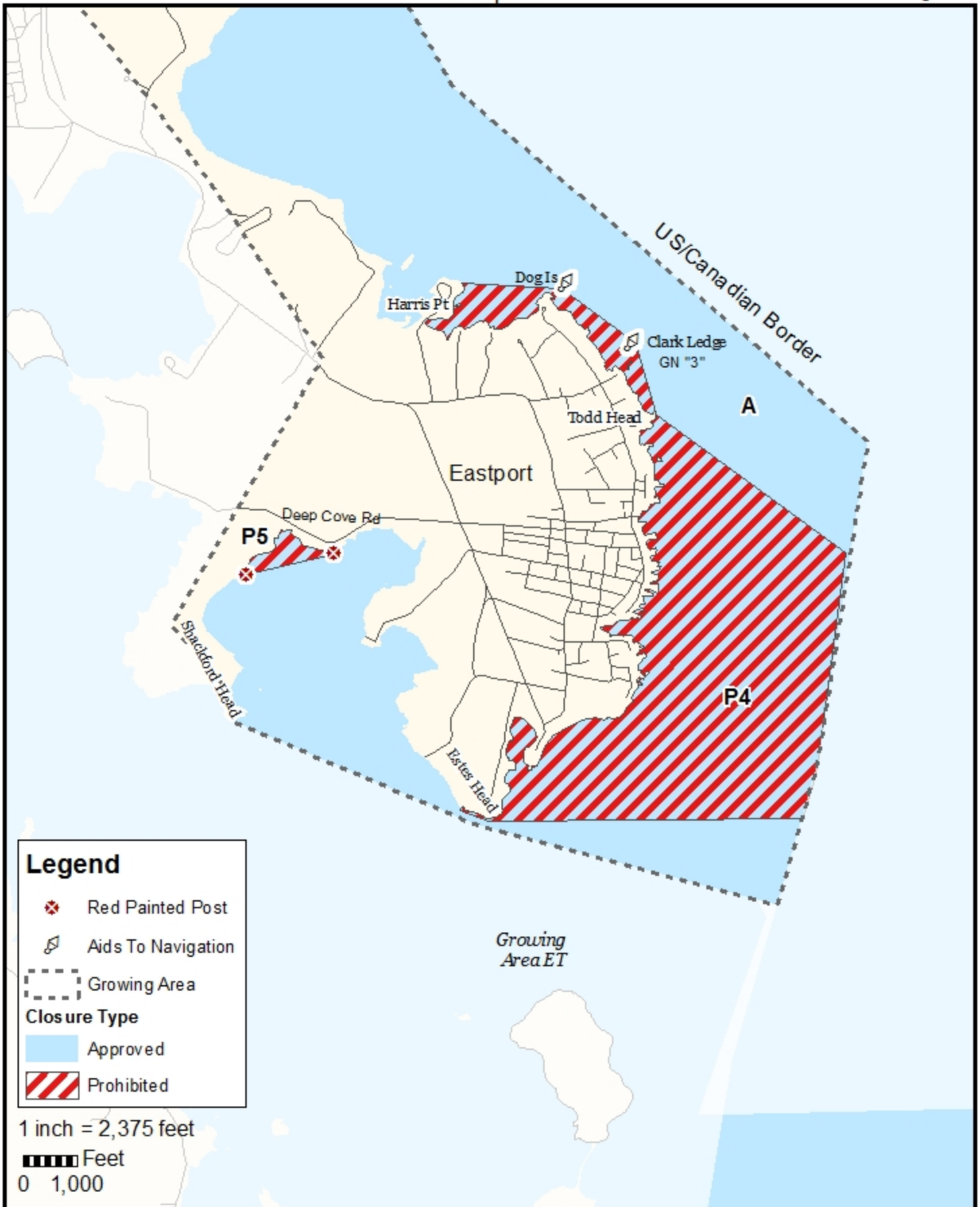


This map is provided as a courtesy. Read the provided legal notice for closure details. Closures are not shown outside of the designated growing area. Maritime navigational aids are for reference only and are not suitable for maritime navigation.

Maine Department of Marine Resources

Growing Area EU, Inset D
Eastport

July 22, 2021



This map is provided as a courtesy. Read the provided legal notice for closure details. Closures are not shown outside of the designated growing area. Maritime navigational aids are for reference only and are not suitable for maritime navigation.