



Legionellosis

Maine Surveillance Report | 2021

Case Information:

38

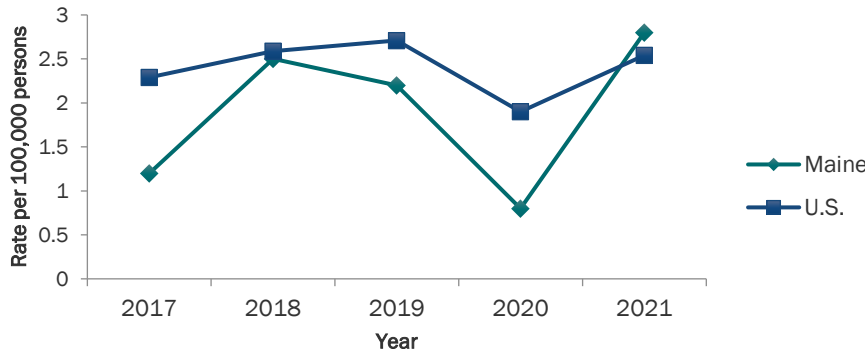
Patients diagnosed with legionellosis

2.8

Cases per 100,000 people

345%

increase since 2020

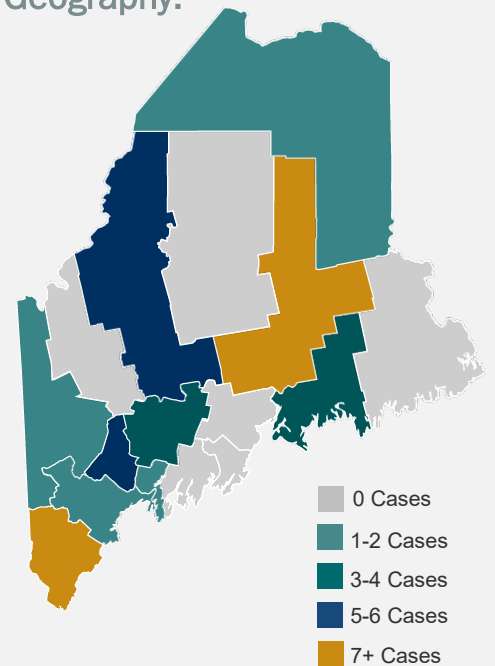


Demographics:



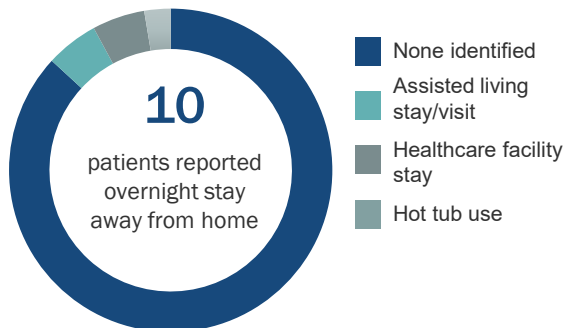
- 76% of patients were male
- 58 years old on average
- 92% of patients were White

Geography:



Characteristics:

High Risk Exposures



5 Traveled outside of Maine during incubation period

100% of patients were hospitalized

People at increased risk:



- People 50 years or older
- Current or former smokers
- People with chronic lung disease
- People with weak immune systems or who take drugs that weaken the immune system
- People with cancer
- People with underlying conditions such as diabetes, kidney failure, or liver failure

How it spreads:

- Legionellosis is a group of diseases caused by *Legionella* bacteria. The most common disease is Legionnaires' Disease.
- People get Legionnaires' Disease when they breathe in small droplets of water containing the bacteria.
- People can not spread legionellosis to other people.

For more information visit:

<https://www.maine.gov/dhhs/mecdc/disease-s-conditions/respiratory-illnesses/legionellosis>

www.cdc.gov/legionella