



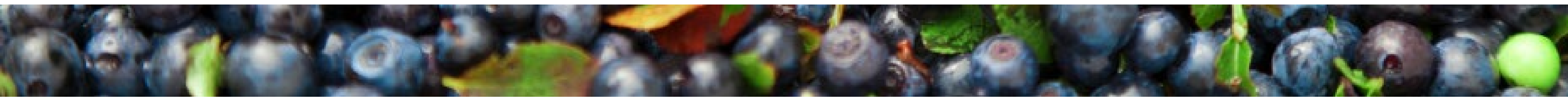
Maine Shared Community Health Needs Assessment

York County

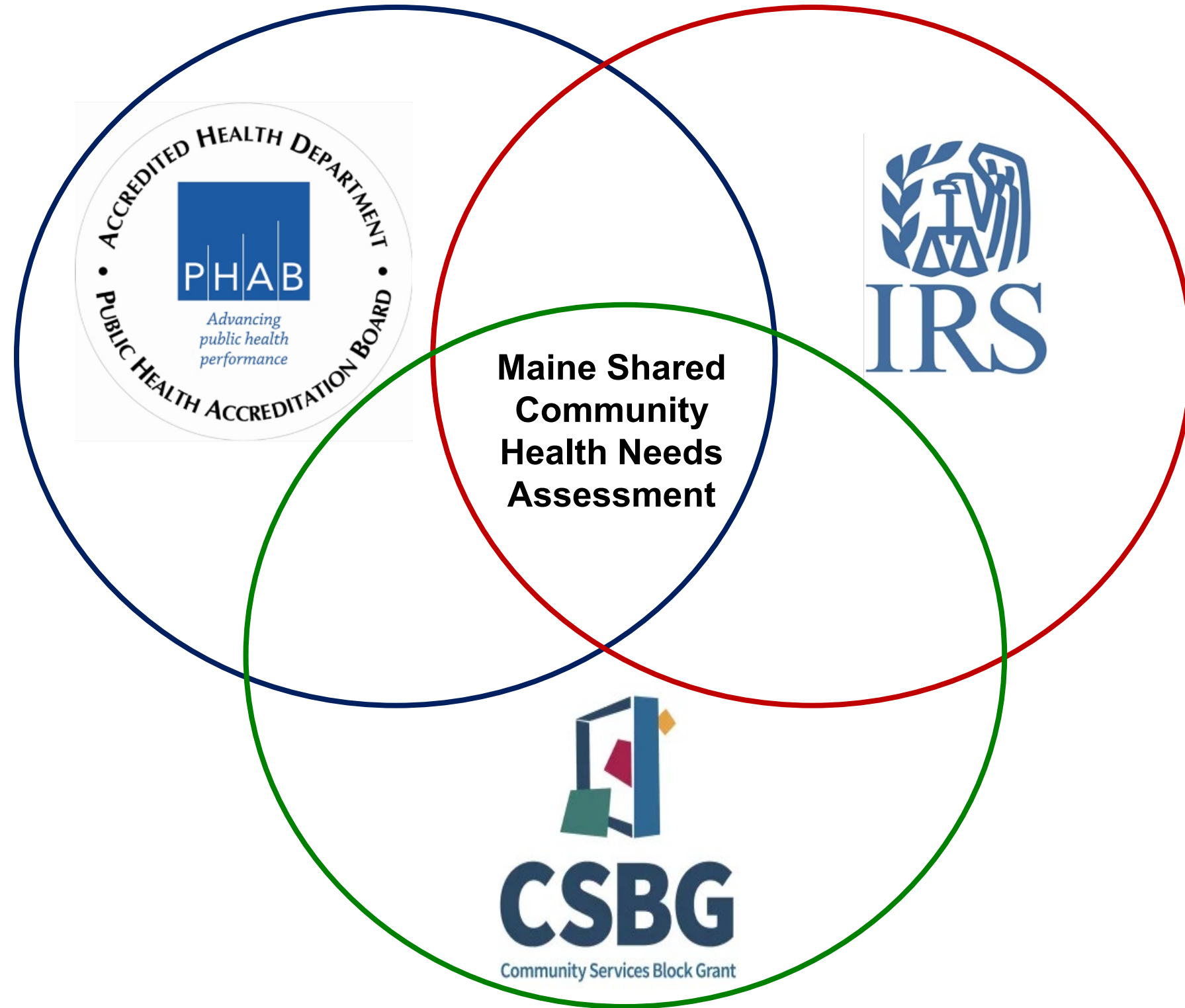
October 28, 2024

Maine Shared CHNA

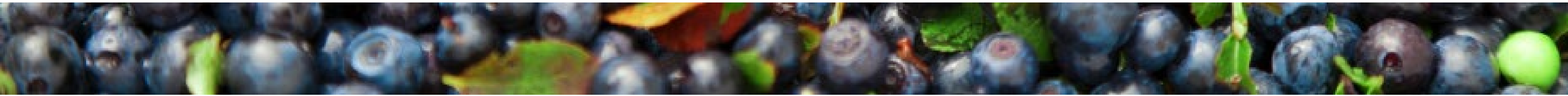
The Maine Shared Community Health Needs Assessment (Maine Shared CHNA) is a collaborative partnership between Central Maine Healthcare, Northern Light Health, MaineGeneral Health, MaineHealth, the Maine Center for Disease Control and Prevention, and the Maine Community Action Partnership. By engaging and learning from people and communities and through data analysis, the partnership aims to improve the health and well-being of all people living in Maine.



Maine Shared CHNA

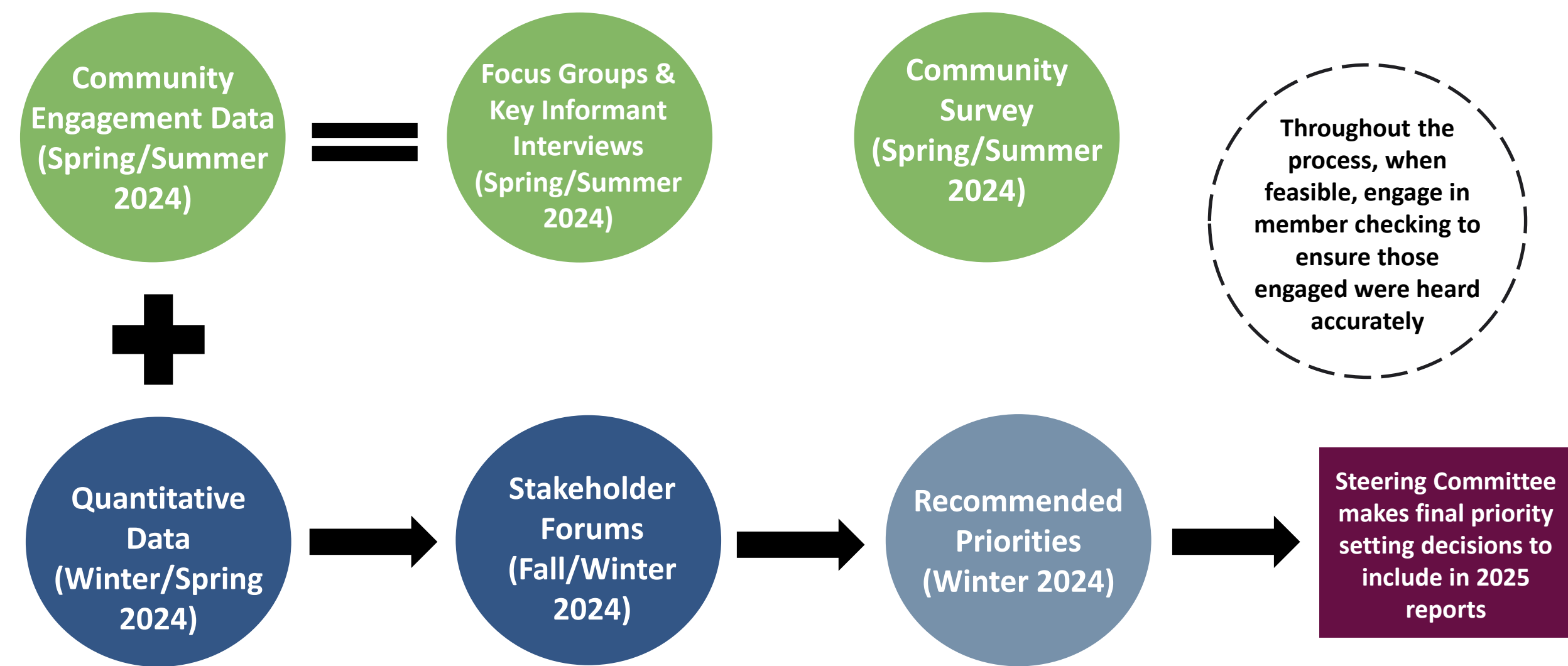


- **Steering Committee**
- **Program Manager**
- **Standing Committees**
 - **Metrics**
 - **Community Engagement**
- **Ad-Hoc Committees**
- **Local Planning Teams**

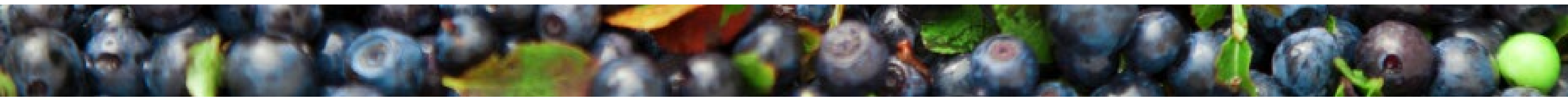


Maine Shared CHNA

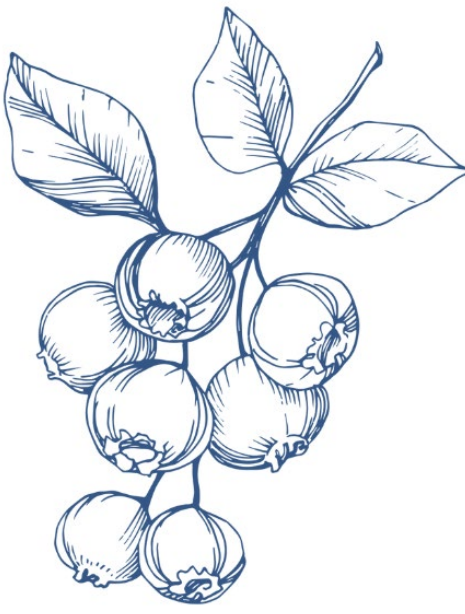
2024 CHNA Data Analysis, Community Engagement, and Prioritization Process & Timeline



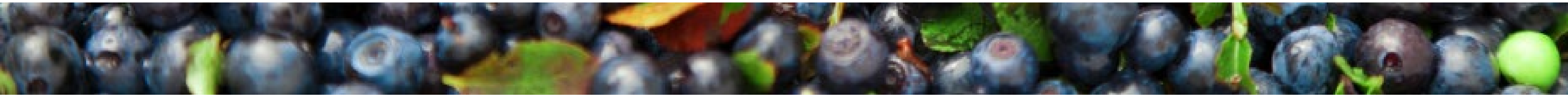
Surveys conducted statewide, included both general community members and professionals; Focus Groups conducted with community members, both low-income population and health equity groups; Key Informant Interviews conducted when focus groups weren't feasible or to collect more information; Stakeholder forums conducted with professionals and advocates



Next Steps



- **County reports will be drafted summarizing the data analysis, community engagement findings, and Forum discussions related to each County's final priorities.**
- **The Steering Committee will review and compile the priorities from each County to inform the final priorities for the State.**
- **Final reports will be released in March 2025.**
- **Reports are used by health systems for community health improvement planning, the MeCDC for state health improvement planning, & the CAPs for strategic and programmatic planning**



Agenda

Welcome!

Overview of Key Findings & Prioritization Voting

Breakout: Discussion of Findings & Prioritization Voting

Discussion Report Out & Second Round of Voting

BREAK

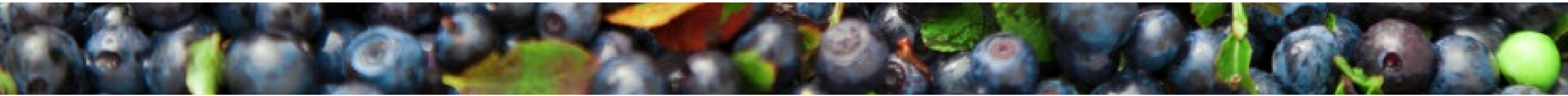
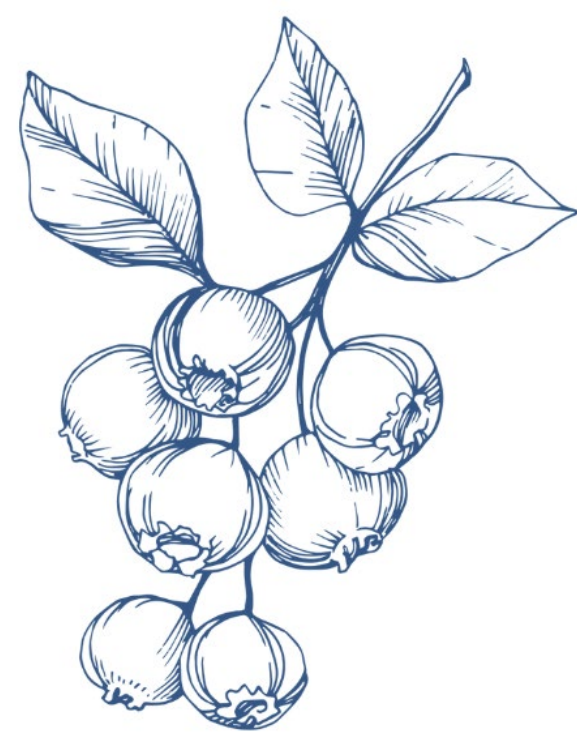
Presentation of Final Priorities

Breakout: Deeper Discussion of Priorities, Round 1

Breakout: Deeper Discussion of Priorities, Round 2

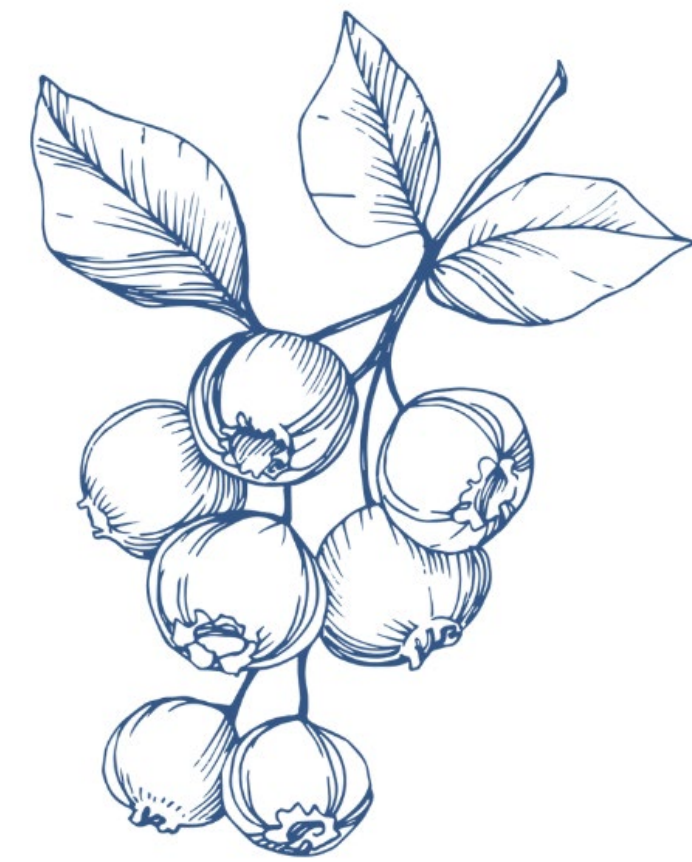
Breakout: Deeper Discussion of Priorities, Round 3

Conclusion & Next Steps

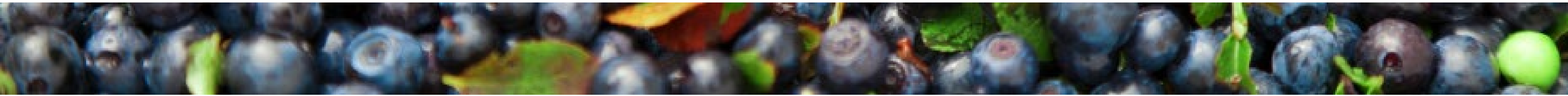


Housekeeping

- Step Up. Step Back.
- Listen Longer. Be Curious. **Be Bold.**
- Take Breaks. Water and De-Water. Move Your Body.
- Maintain Confidentiality.
- Acknowledge Positionality.



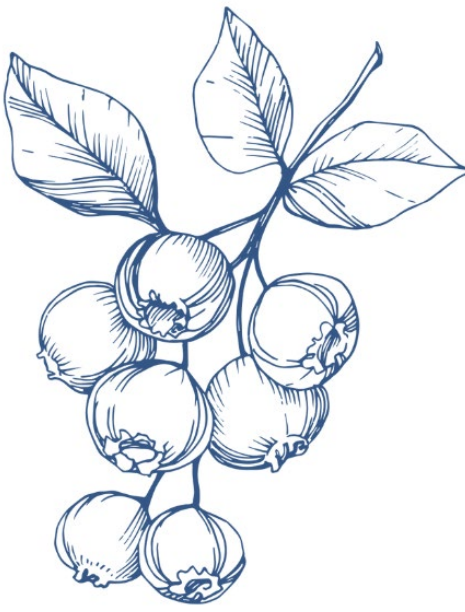
[2023 Community Agreements.pdf \(mainephilanthropy.org\)](https://mainephilanthropy.org/2023-Community-Agreements.pdf)



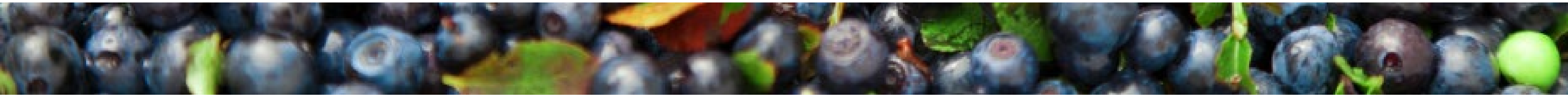


Key Findings

Quantitative Data

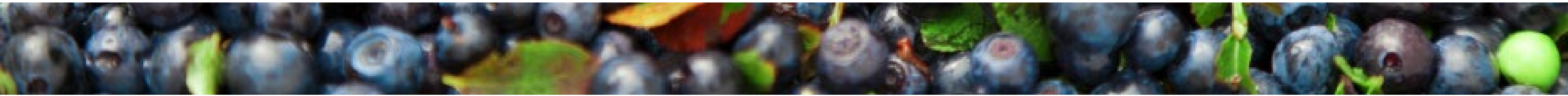
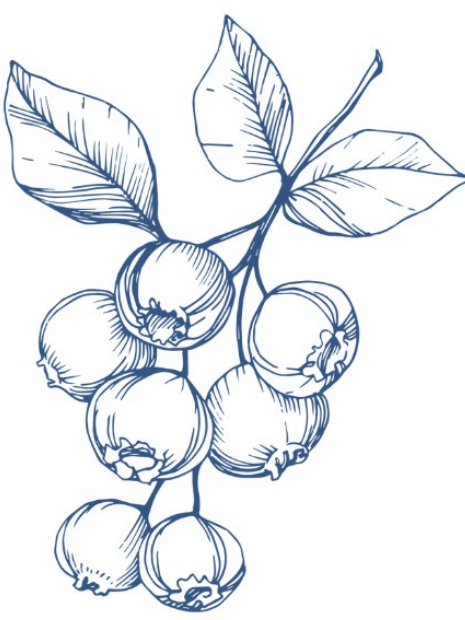


- **Indicators are reviewed and updated, as needed, by the Metrics Committee using identified criteria**
- **Data comes from national, state and at times programmatic sources**
- **Some data is missing or suppressed due to small sample sizes**
- **Other data may be missing due to complications in collection or errors in analysis on the end of the data source**
- **The most up to date data profiles can be found on the MeSCHNA website**



Qualitative Data

- **Community engagement framework and populations to engage are developed by the Community Engagement Committee**
- **This cycle's engagement included focus groups (state and county wide), key informant interviews, and surveys**
- **The multiprong engagement is intended to hear from as many people as possible within our capacity and resources**
- **The qualitative data and quantitative data are meant to complement each other**
- **The most up-to-date overviews can be found at the MeSCHNA website.**

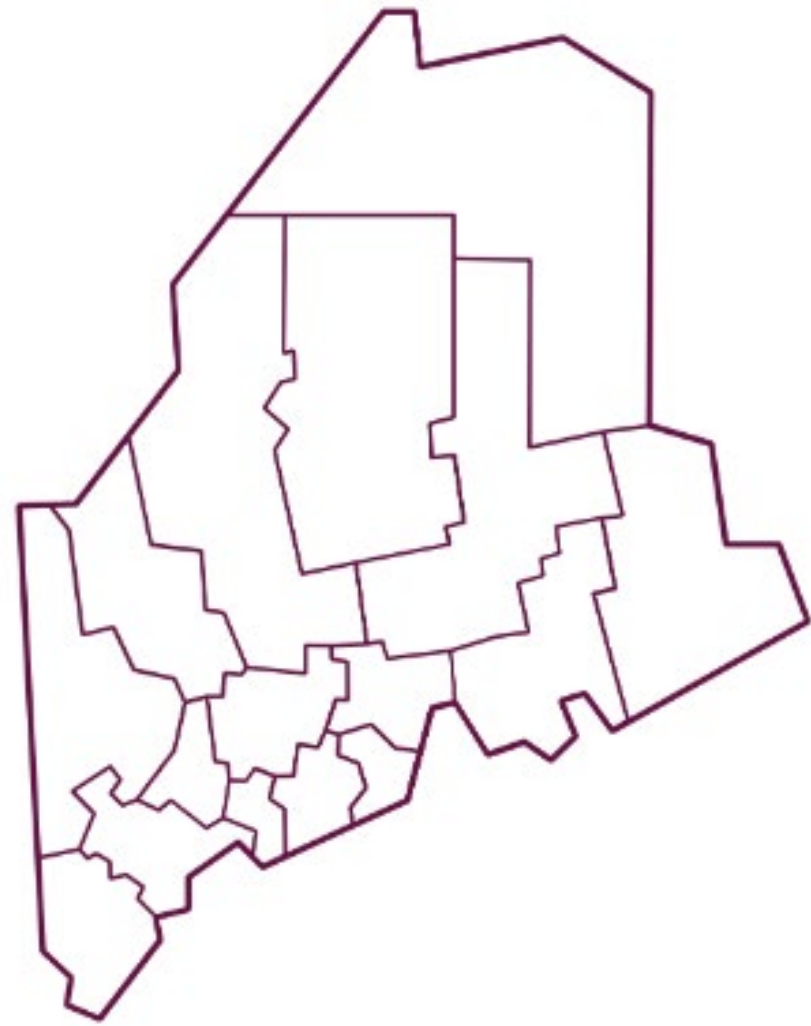


Demographics

Total Population

212,691

15.6% of the total state population



Population by Age



Age Under 18

18.2%



Age 18-64

60.6%

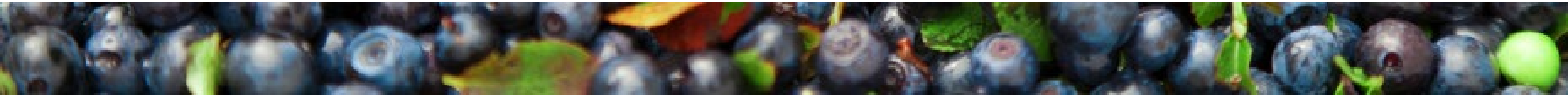
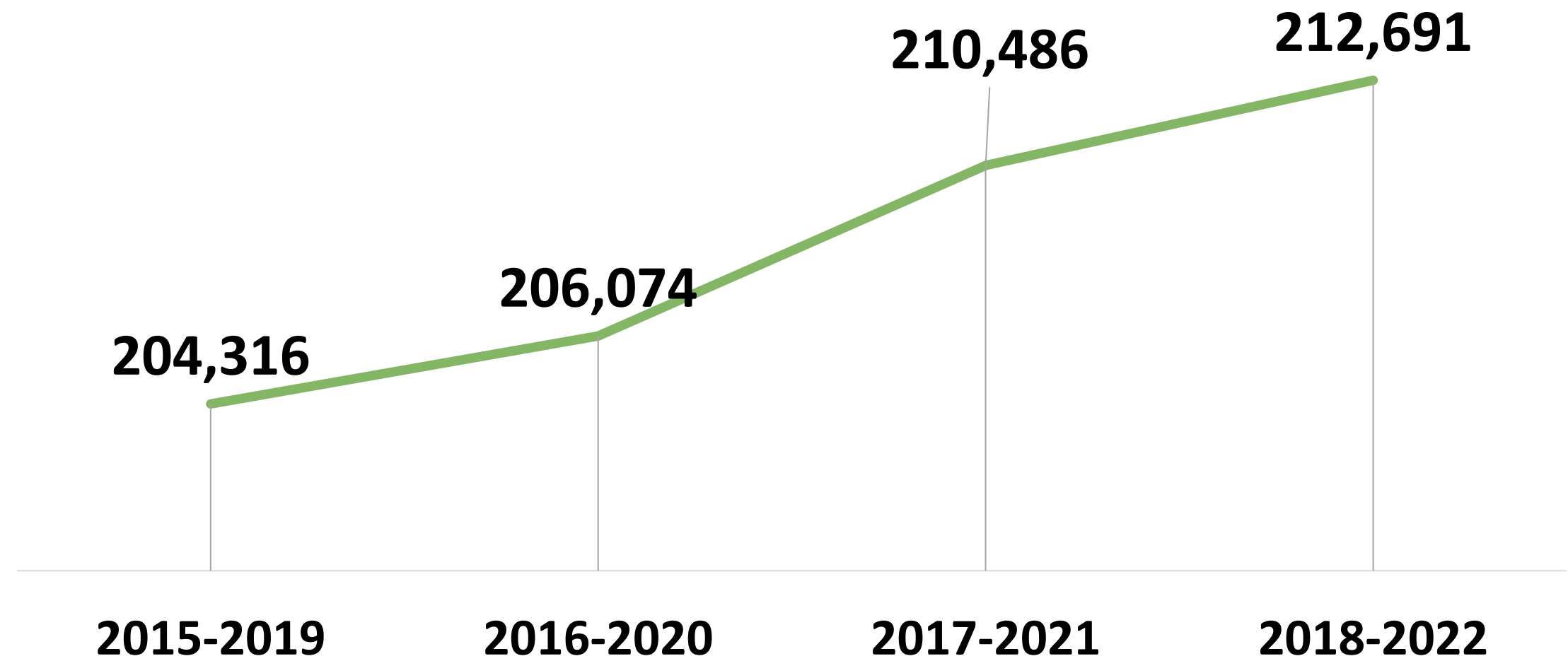


Age 65+

21.2%

U.S Census Bureau ACS Five-year Estimates 2018-2022

County Population



Demographics

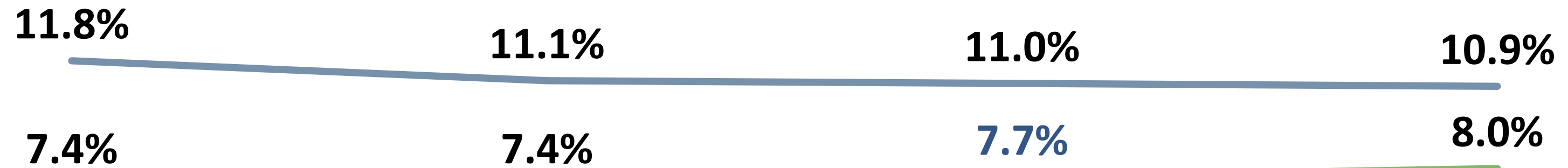


2017-2021 data reflects that York County had a **significantly lower poverty rate** compared to Maine.

Individuals Living in Poverty

— York County — Maine

Percent of Total Population



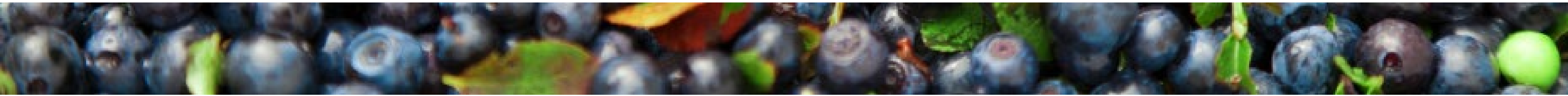
2015-2019

2016-2020

2017-2021

2018-2022

U.S. Census Bureau ACS Five-year Estimates



Demographics

Social Drivers of Health

■ Maine ■ York County

65 + Living Alone

29.5%

28.1%

Associate's Degree or Higher (25+)

44.4%

44.6%

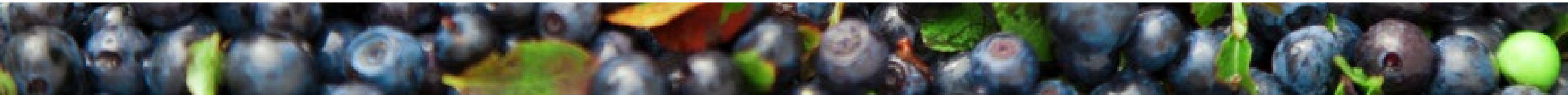
Population Living with a Disability

15.8%

14.7%

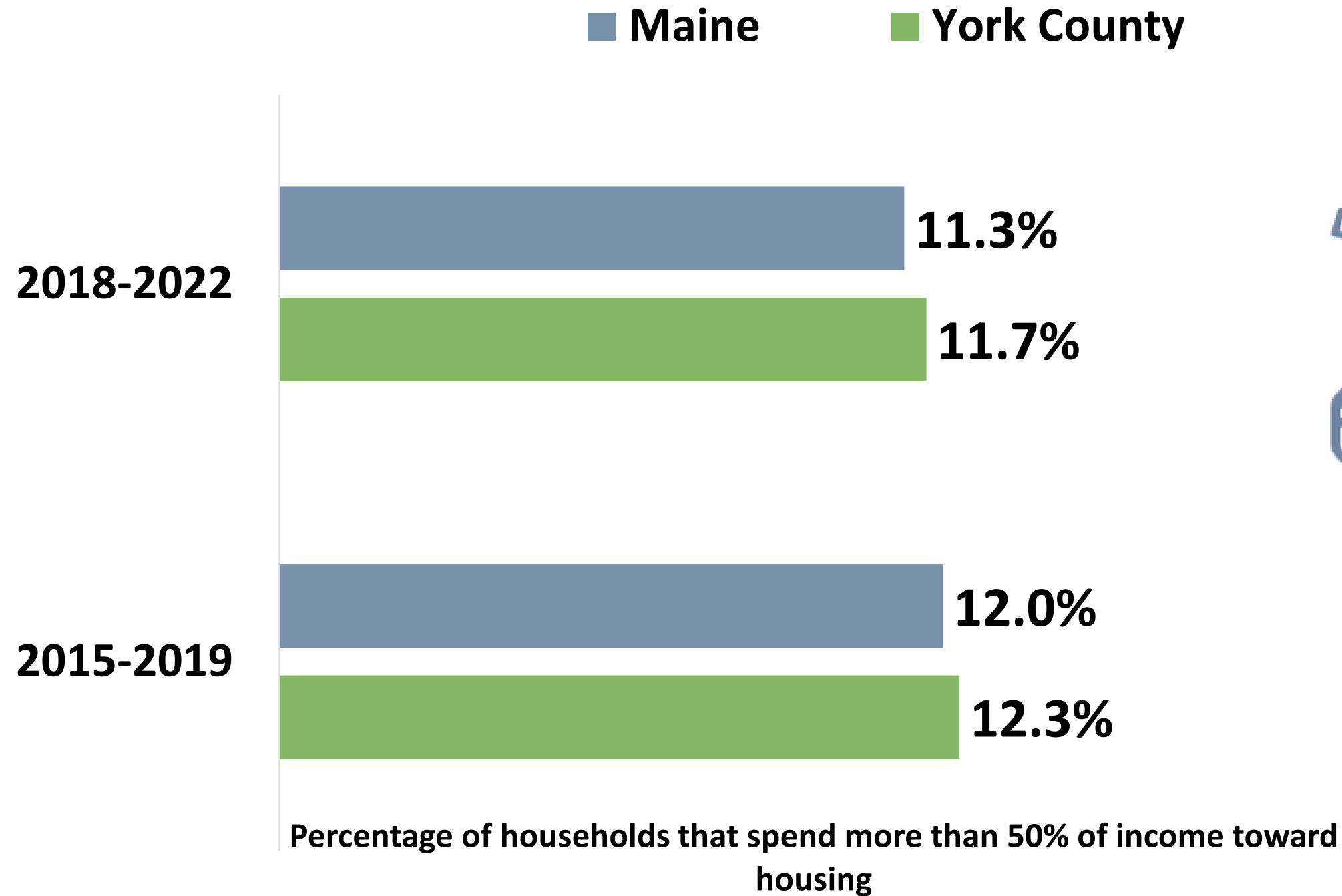
U.S Census Bureau ACS Five-year Estimates 2018-2022

People Living with a Disability, U.S Census Bureau ACS Five-year Estimates 2017-2021



Community Conditions

Cost-burdened Households



Transportation



41.6%

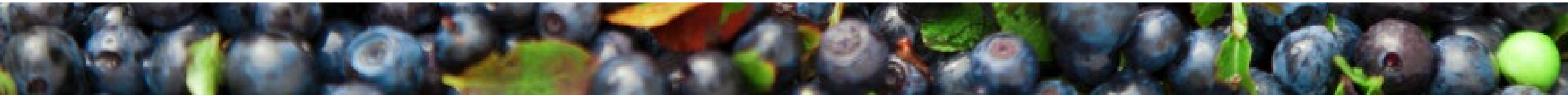
Commute of greater than 30 minutes driving alone



1.1%

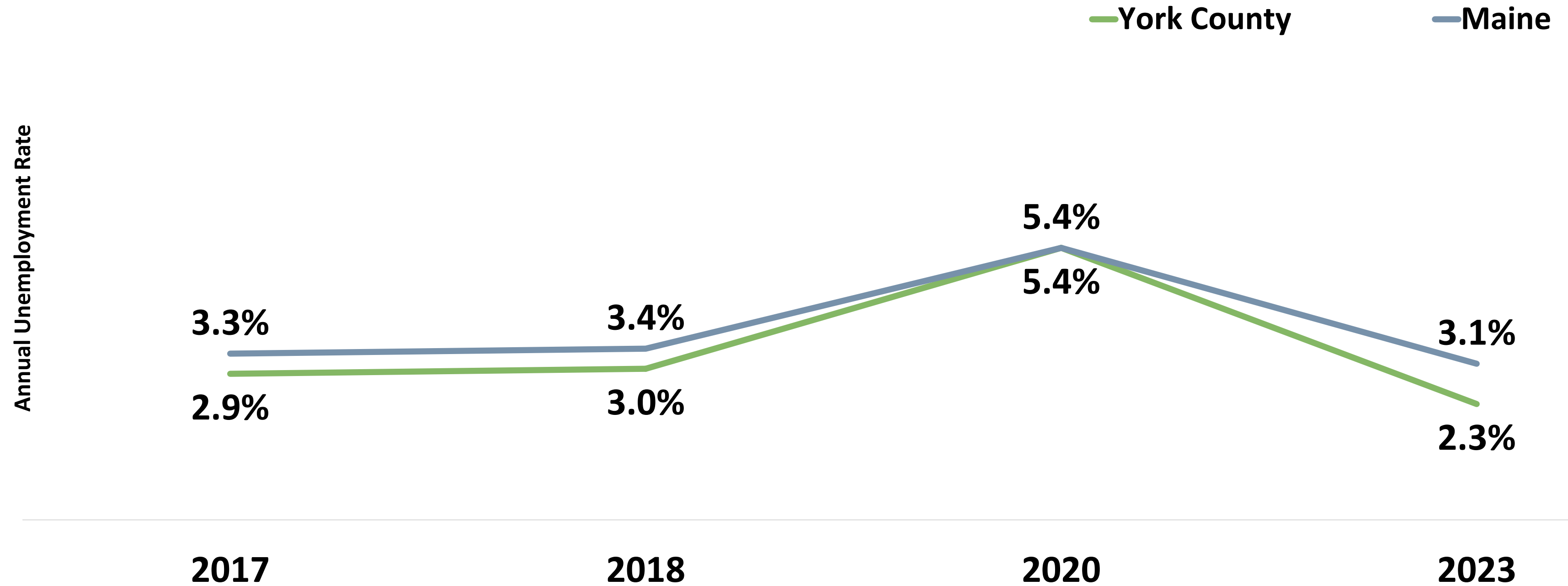
No vehicle for the household

*U.S. Census Bureau ACS Five-year Estimates 2018-2022
No Vehicle for the Household, U.S. Census Bureau ACS Five-year
Estimates 2017-2021*

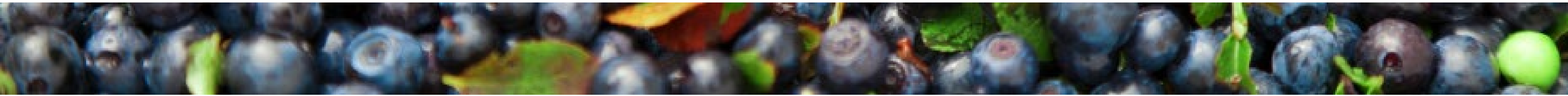


Community Conditions

Unemployment



U.S Bureau of Labor Statistics



Community Conditions



York County's 2017-2021 median household income is **significantly higher** than Maine's (\$63,182), as well as to 2015-2019 county data.

Economic Wellbeing



Median household income

2015-2019: \$67,830

2017-2021: \$73,856



Households living above the federal poverty level but below the Asset

Limited Income Constrained Employed threshold of financial survival

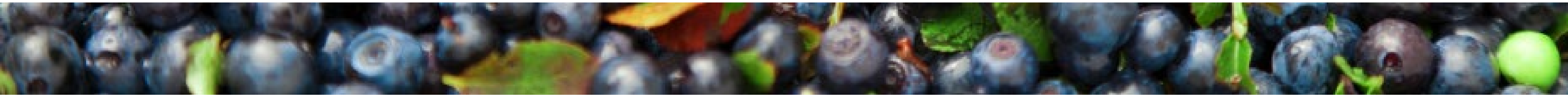
2019: 28.4%

2022: 30.4%

ALICE

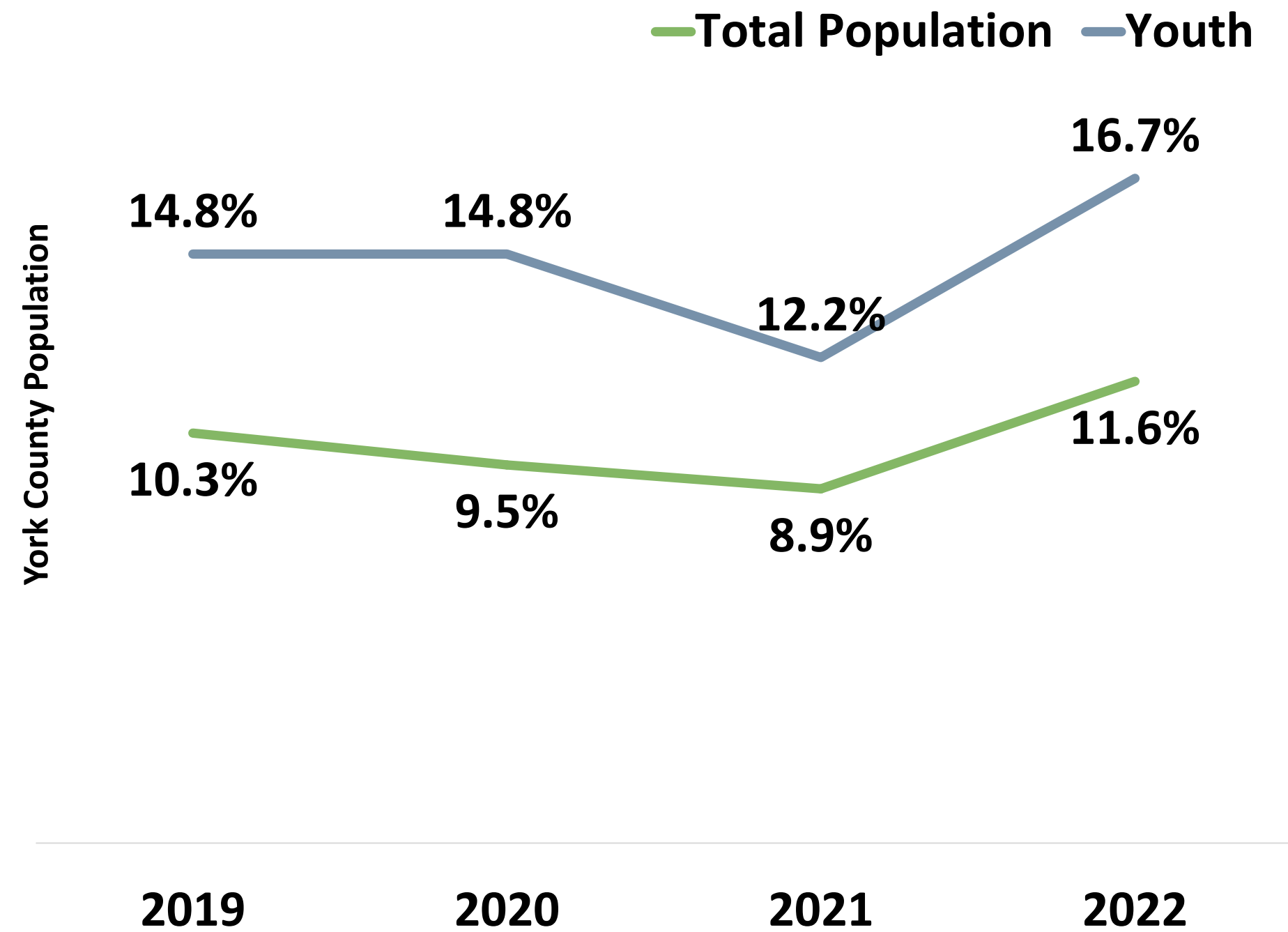
Working families who are struggling to afford basic necessities like housing, food, and childcare **despite** earning an income technically above the poverty line.

These families are working but still financially insecure due to the high cost of living in their area.

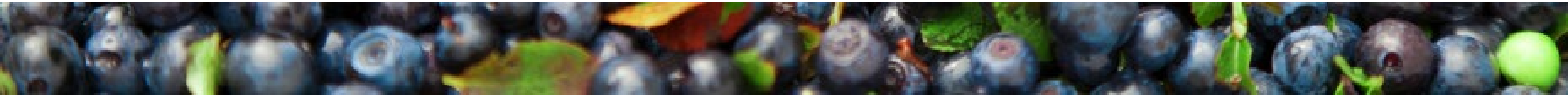
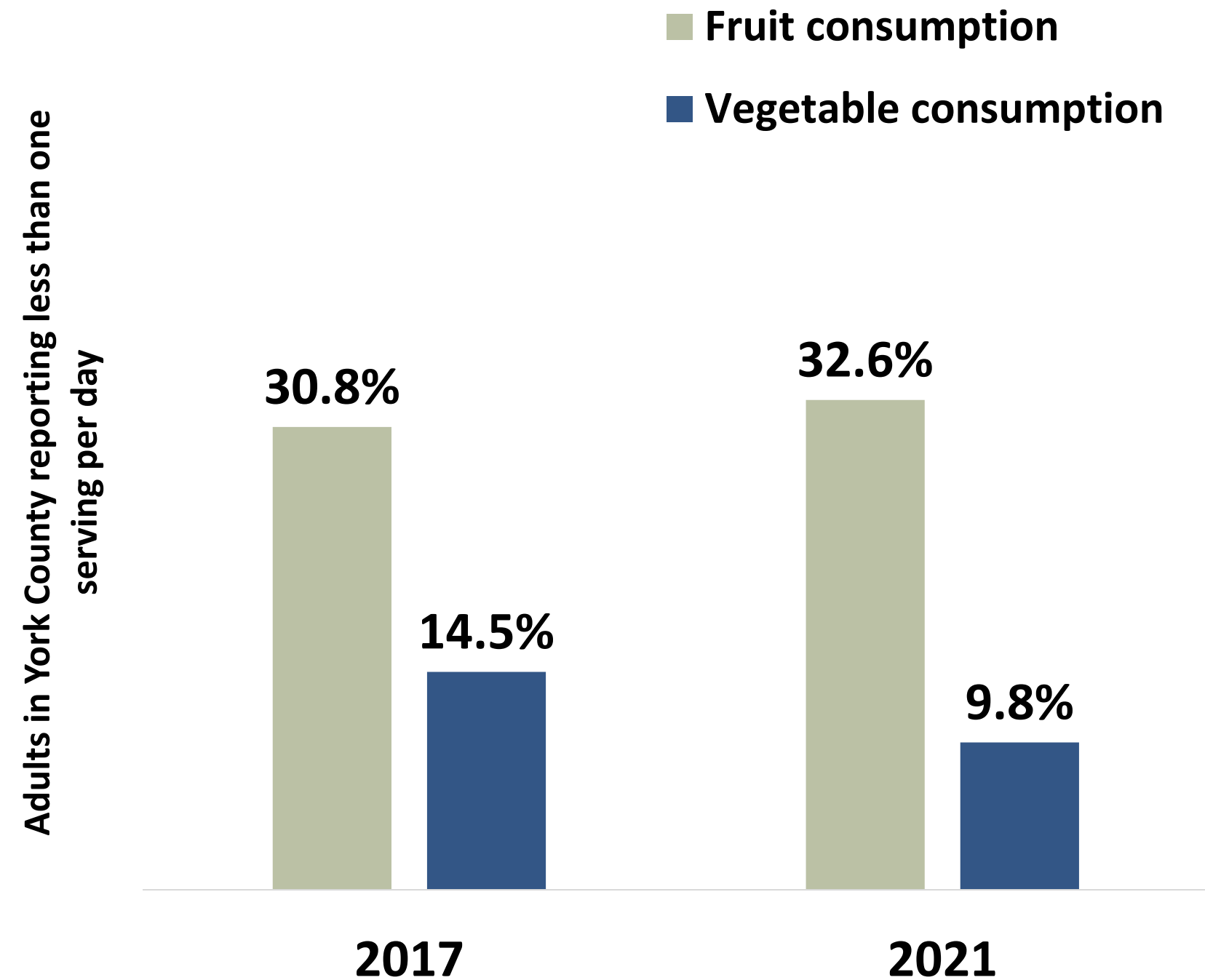


Community Conditions

Food Insecurity



Fruit & Vegetable Consumption



Community Conditions

Child Care



Child Care Centers

2020: 113

2024: 111

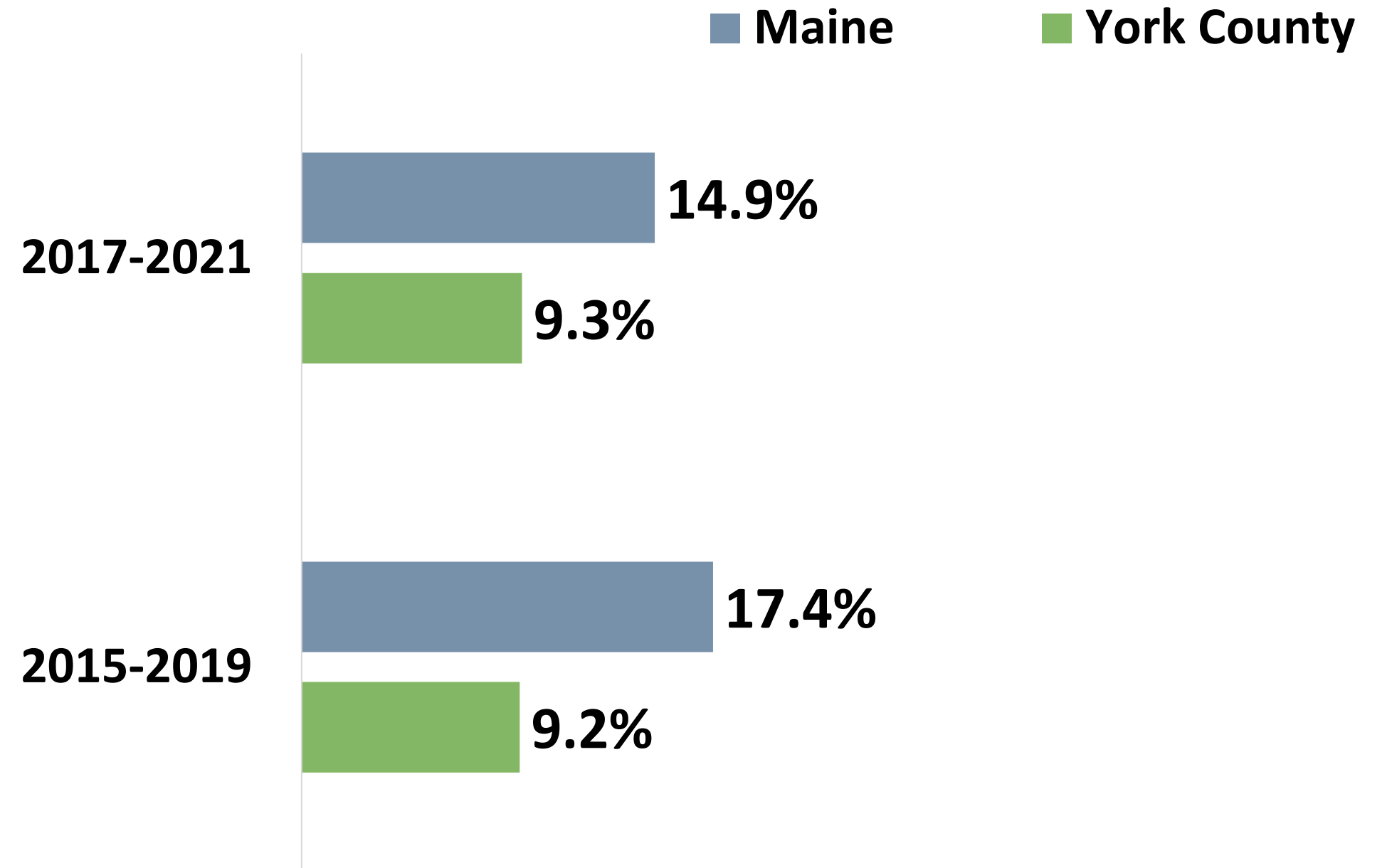


Children served in publicly funded state & local preschools

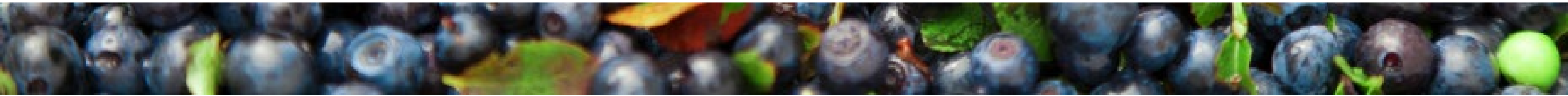
2019: 34.9%

2023: 39.4%

Head Start eligible infants, toddlers & preschool age children

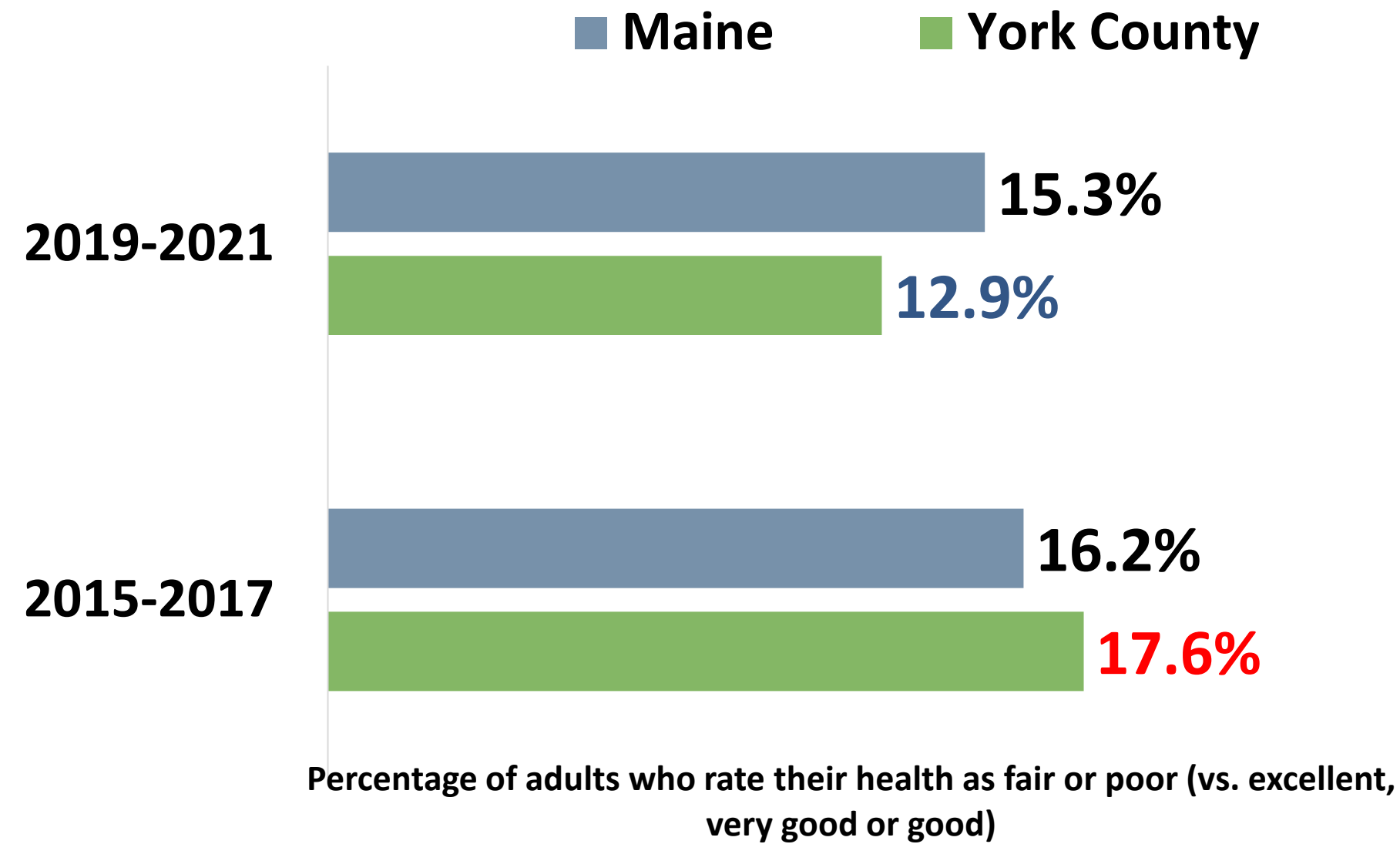


Percentage of children under 6 who live in households where the total income of the householder's family has been below the established federal poverty level in the past year



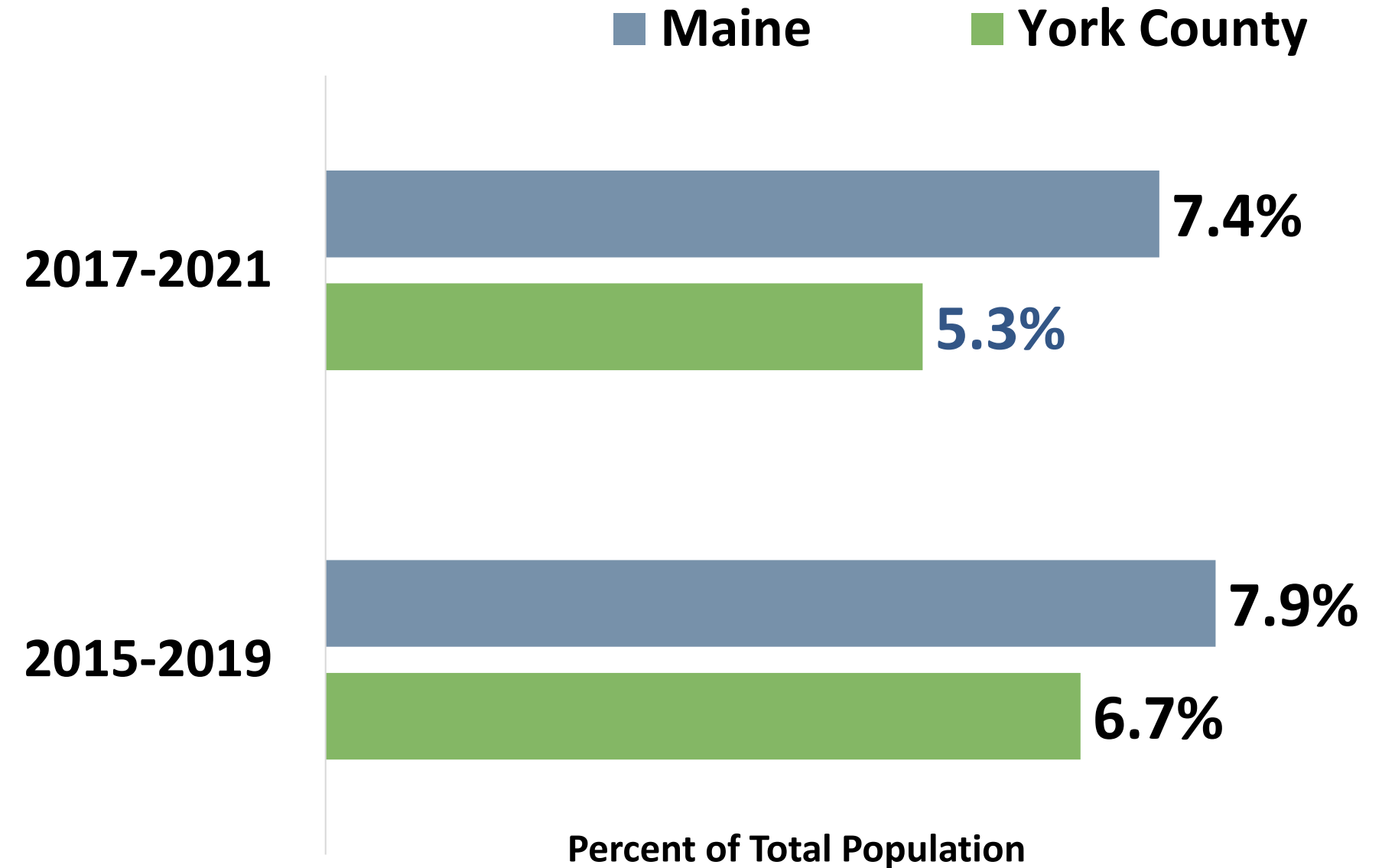
Protective & Risk Factors

Poor or Fair Health (self-rated)

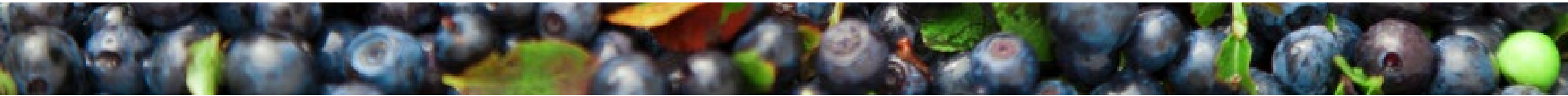


The 2019-2021 data reflect that York County has a **significantly lower** rate of adults self-reporting fair or poor health compared to Maine and 2015-2017 county data.

Uninsured Population

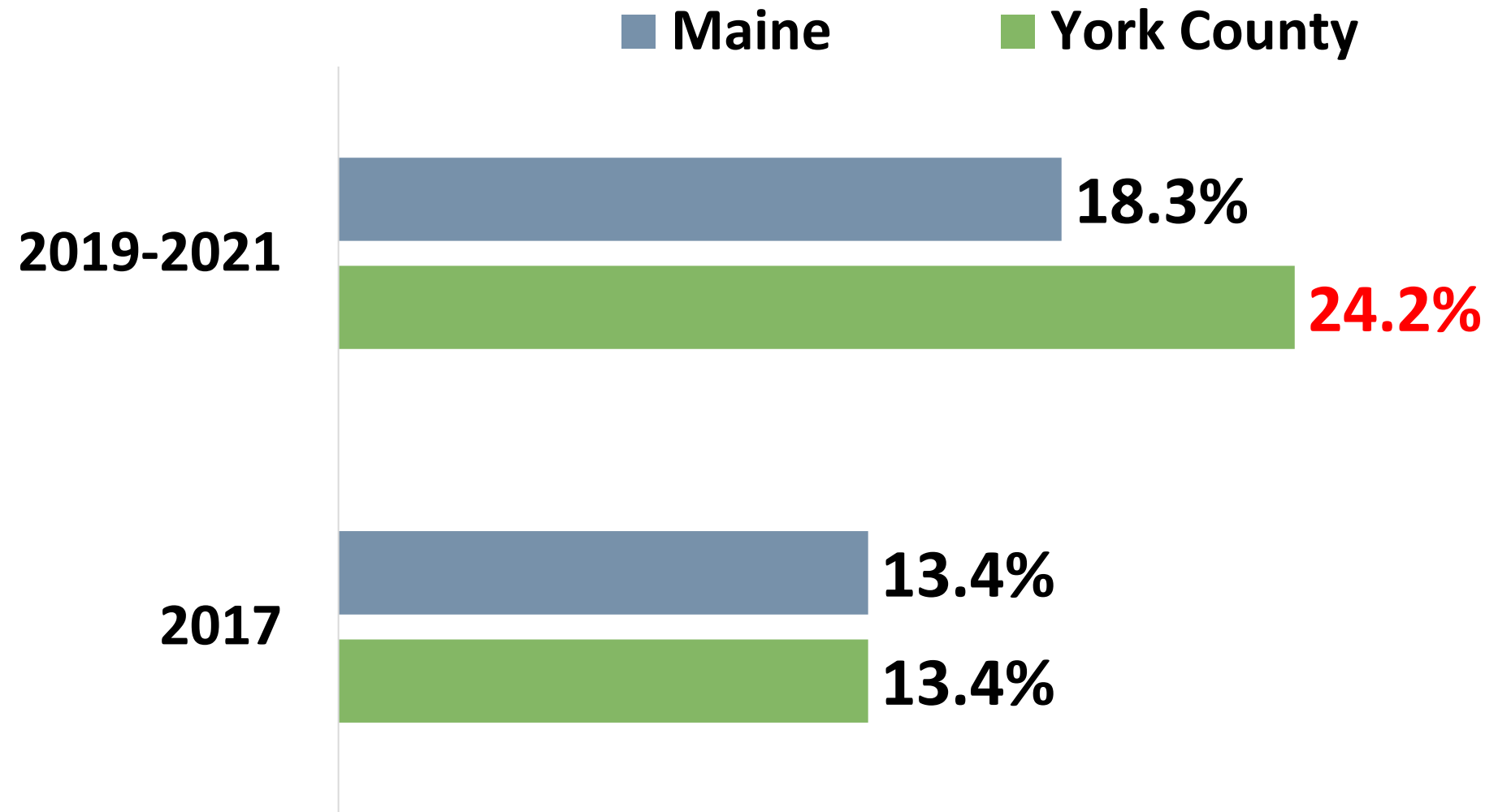


The 2017-2021 data reflect that York County has a **significantly lower** rate of people without health insurance compared to Maine.



Protective & Risk Factors

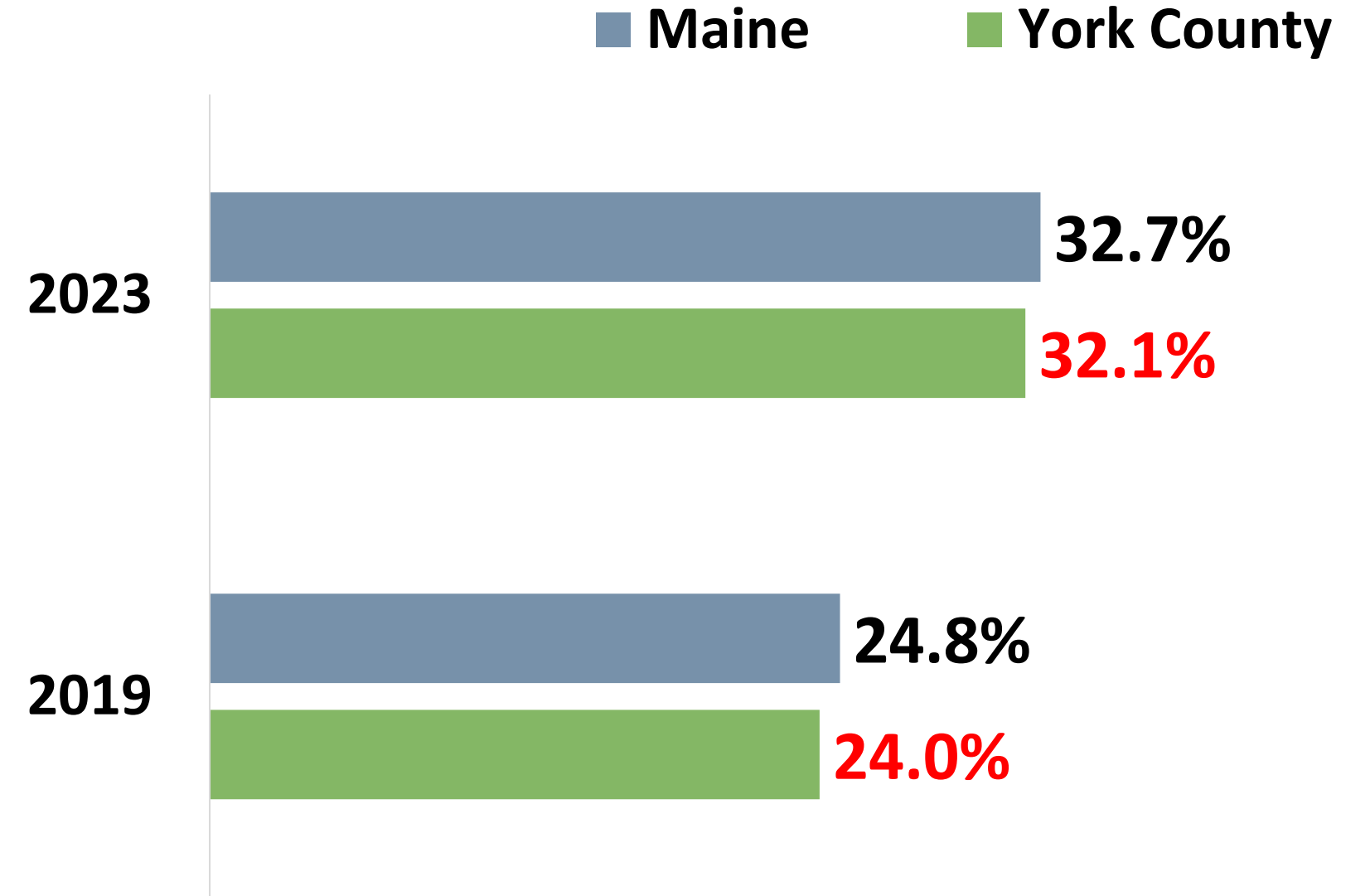
Adult Marijuana Use



Percentage of adults who used marijuana during the past 30 days

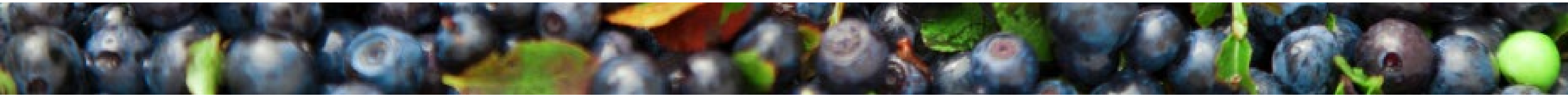
! The 2019-2021 data reflect that York County has a **significantly higher** rate of current adult marijuana use compared to Maine and 2017 county data.

Sad/ Hopelessness



Percentage of middle school students who ever felt so sad or hopeless almost every day for two weeks or more in a row that they stopped doing some usual activities.

! 2023 data reflect that York County has a **significantly higher** rate of middle school students feeling sad/hopeless compared to 2019 county data.



Health Conditions & Outcomes

Leading Causes of Death

Rank	United States	Maine	York County
1	Heart Disease	Heart Disease	Cancer
2	Cancer	Cancer	Heart Disease
3	Unintentional Injury	Unintentional Injury	Unintentional Injury
4	Chronic Lower Respiratory Disease	Chronic Lower Respiratory Disease	Chronic Lower Respiratory Disease
5	Cerebrovascular Diseases	COVID-19	COVID-19
6	Alzheimer's Disease	Cerebrovascular Diseases	Cerebrovascular Diseases
7	Diabetes	Diabetes	Alzheimer's Disease
8	Influenza & Pneumonia	Alzheimer's Disease	Diabetes
9	Liver Disease	Liver Disease	Chronic Liver Disease and Cirrhosis
10	Suicide	Influenza & Pneumonia	Nephritis, Nephrotic Syndrome and Nephrosis



Cardiovascular disease deaths per 100,000 population

2015-2019: 169.7

2018-2022: 174.4

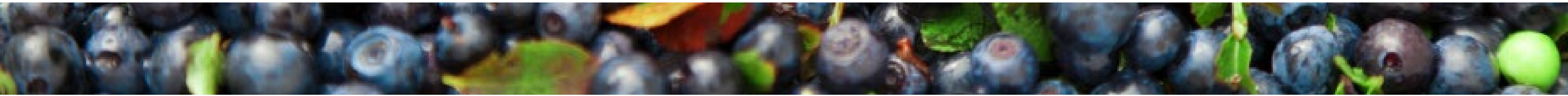


Injury deaths per 100,000 population

2015-2019: 90.3

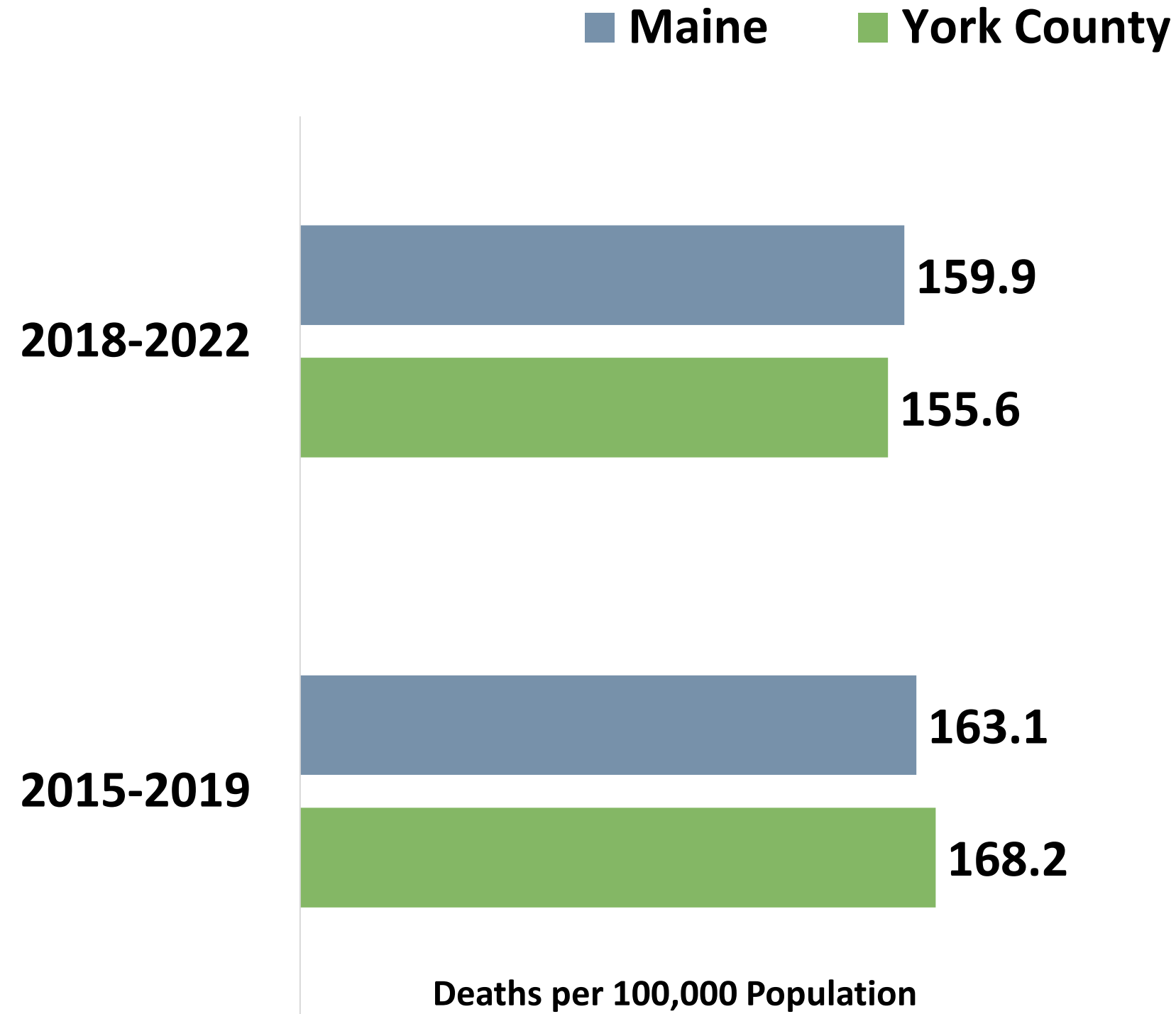
2018-2022: 95.1

**Drug overdose deaths are included in unintentional injury deaths for ranking causes of death.*

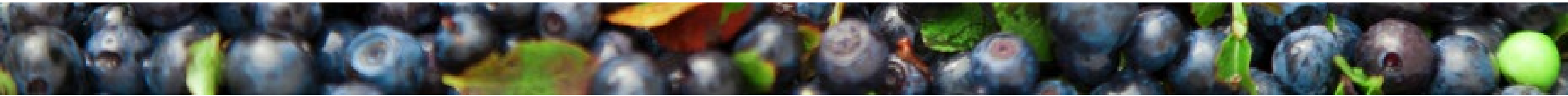
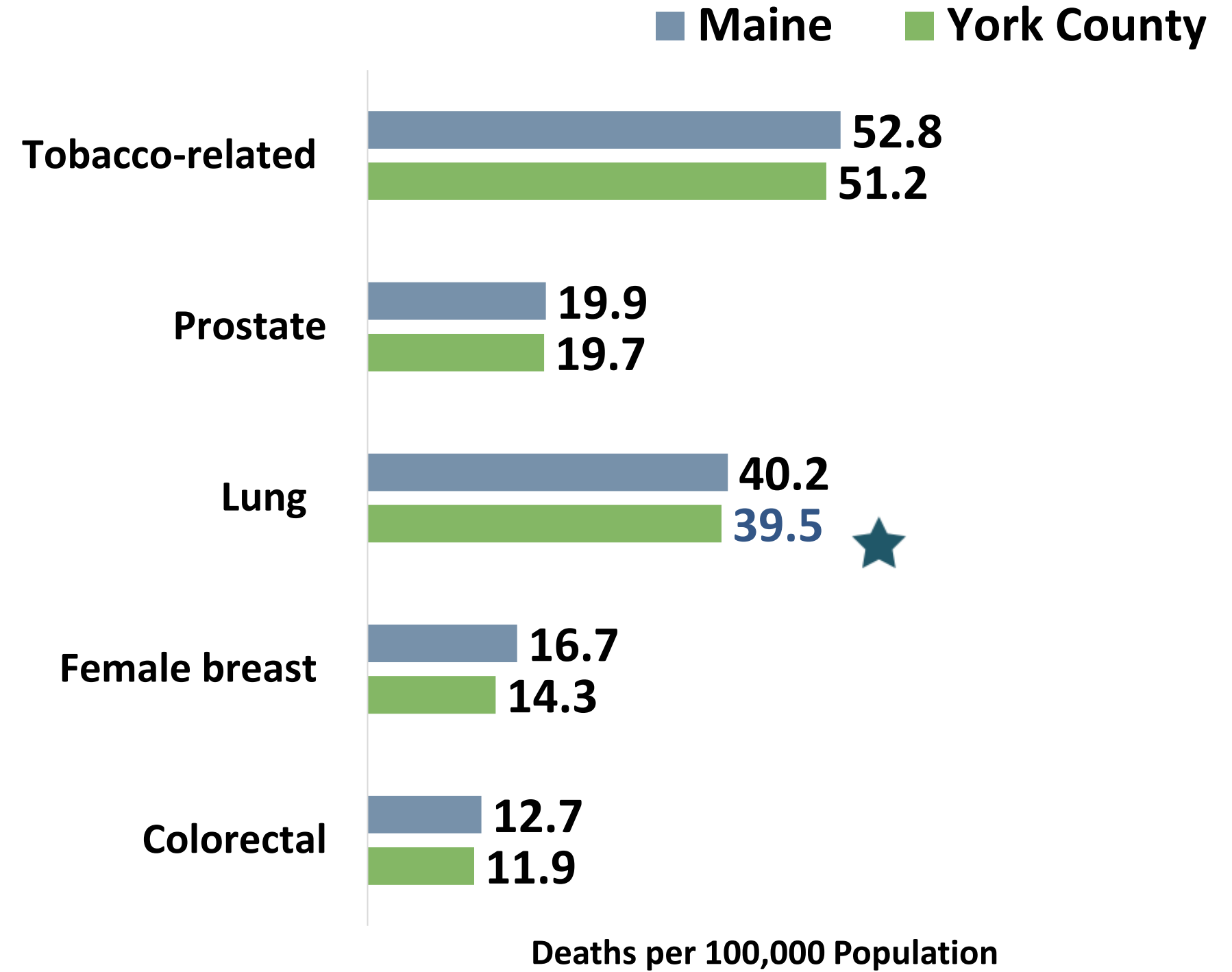


Health Conditions & Outcomes

All Cancer Deaths

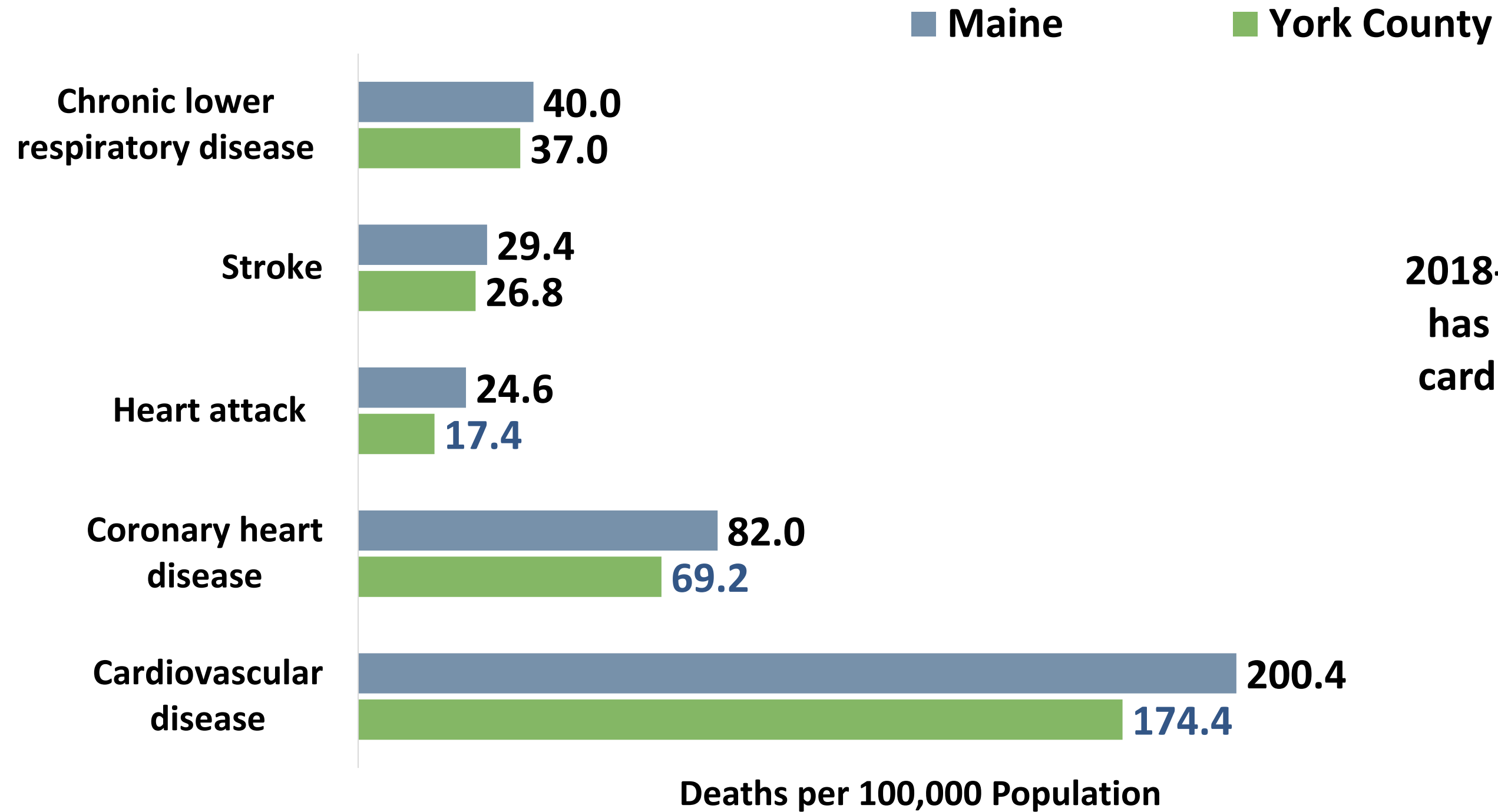


Cancer Mortality by Type

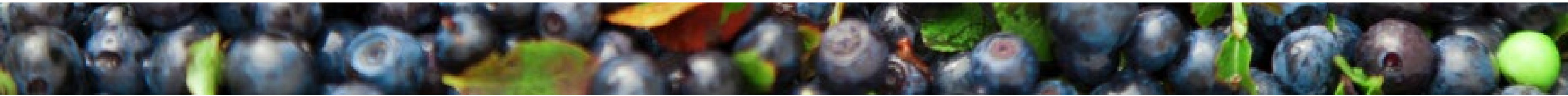


Health Conditions & Outcomes

Chronic Disease Deaths

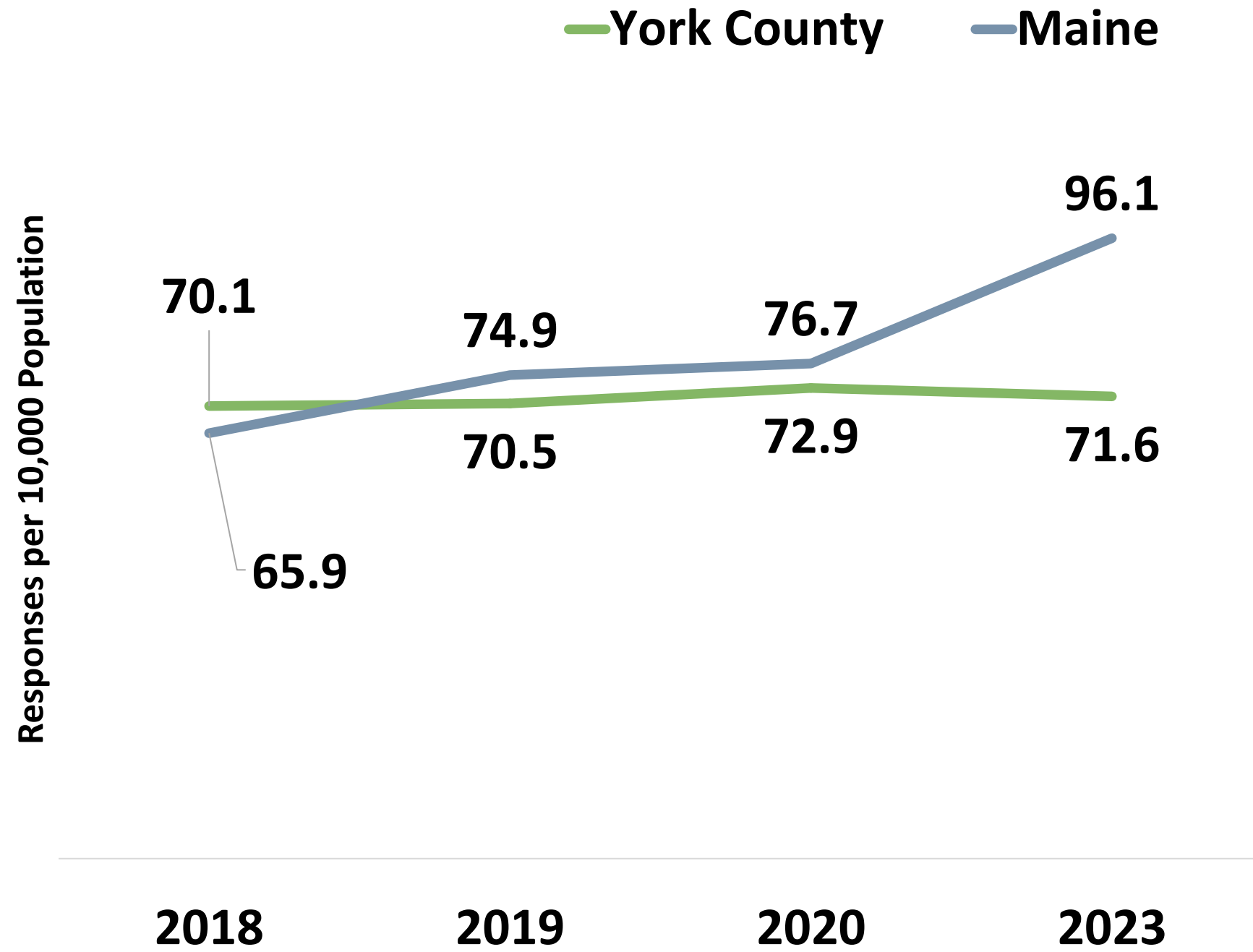


2018-2022 data reflects that York County has a significantly lower death rate for cardiovascular diseases, coronary heart diseases, and heart attacks compared to Maine.

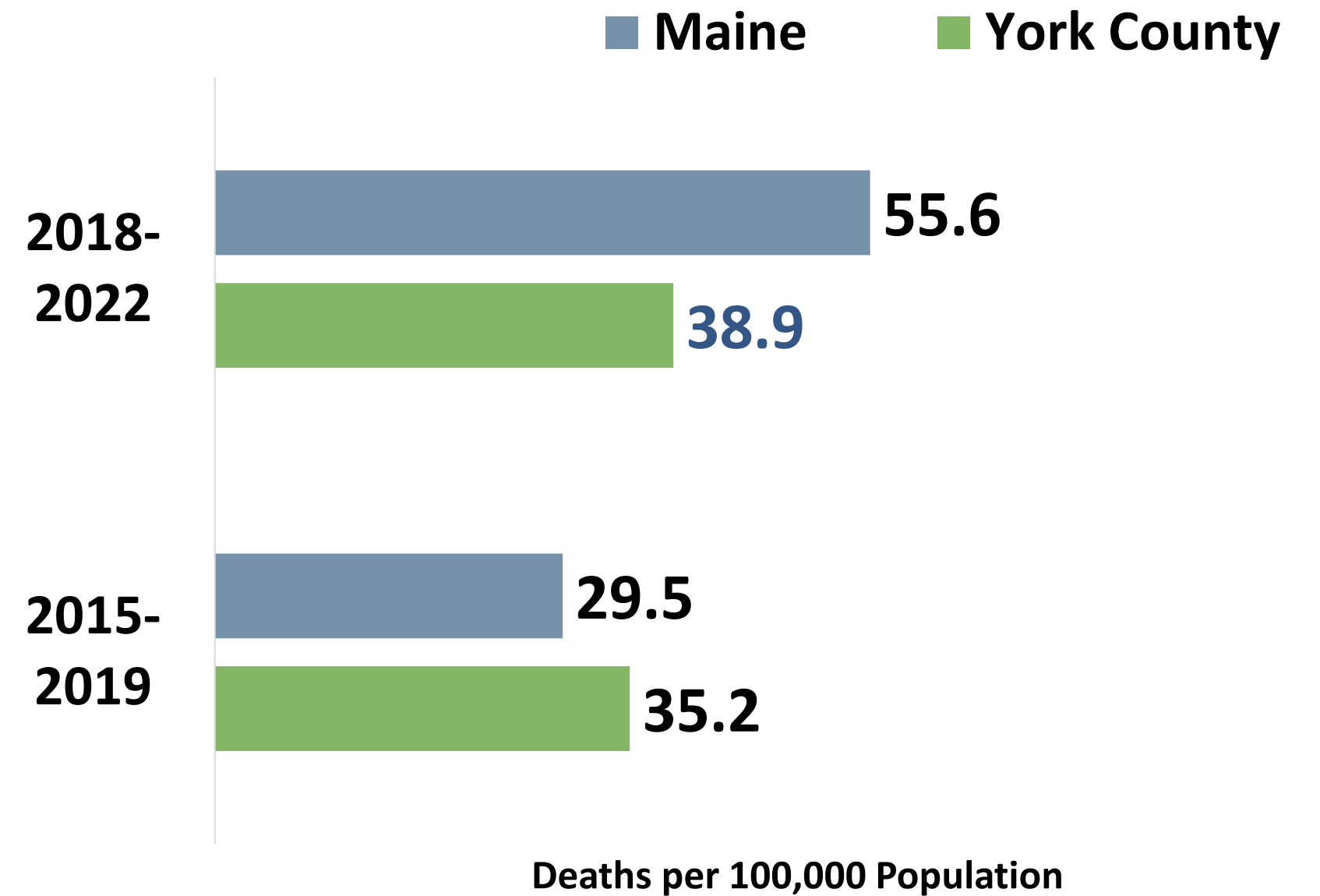


Health Conditions & Outcomes

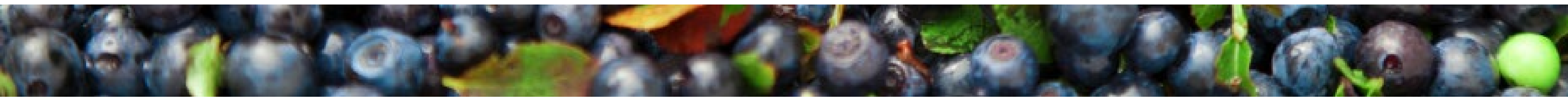
Overdose Emergency Medical Service Responses



Drug-induced Deaths



2018-2022 data reflects that York County has a significantly lower drug-induced death rate compared to Maine.



Health Conditions & Outcomes



Infants who are ever breast fed

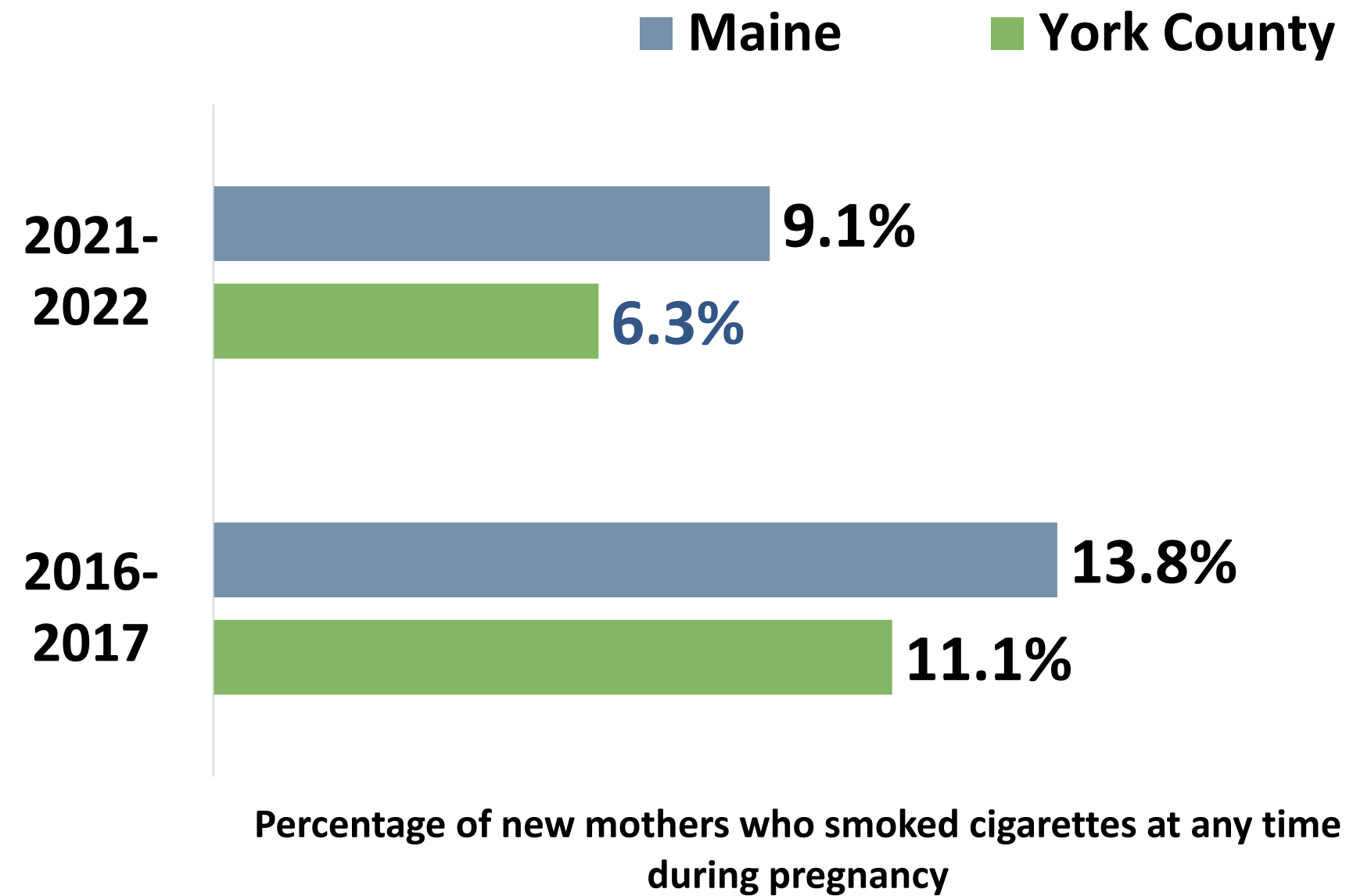
York County: 89.1%

Maine: 87.6%

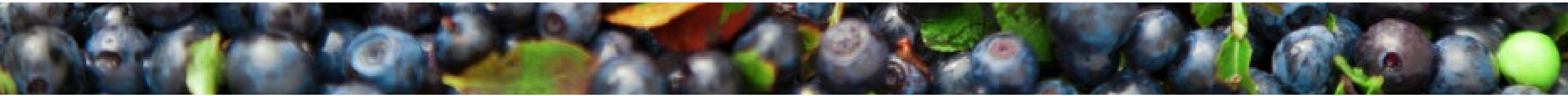


2021-2022 data reflects that York County has a **significantly higher** rate of infants who are ever breast fed compared to Maine.

Smoked During Pregnancy



2021-2022 data reflects a **significantly lower** percentage of women who reported smoking during pregnancy in York County compared to Maine and 2016-2017 county-level data.





Community Engagement

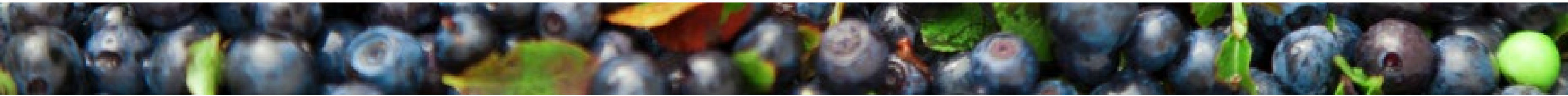
Community Engagement

Focus Group Top Themes

Reliable transportation
Finding and maintaining
doctors
Cost of living
Affordable housing
Availability of resources

Select Quotes From Participants

- “I’m not a senior but I am forced to live on a fixed income as a senior. **I’m not eligible for many services because I’m not old enough.**”
- “Doctor’s office hours make it hard to book appointments. **You need to take off work to see a doctor,** and then you lose money from missing work.”
- “In a place like this, most people want to live closer to town. **You need to have housing available where resources are.** I had an apartment that was \$600 with utilities - now, that would be \$2,000.”
- “You can work a full-time job and still not make enough money to pay for mortgage and other expenses. **If we make five dollars more an hour, we lose food stamps, MaineCare.**”

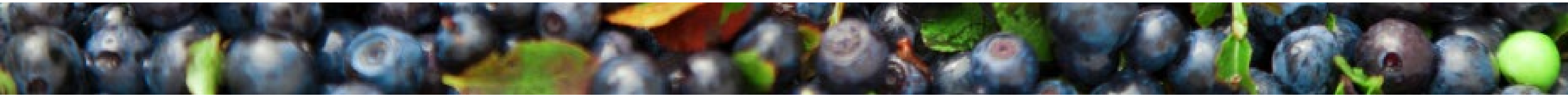
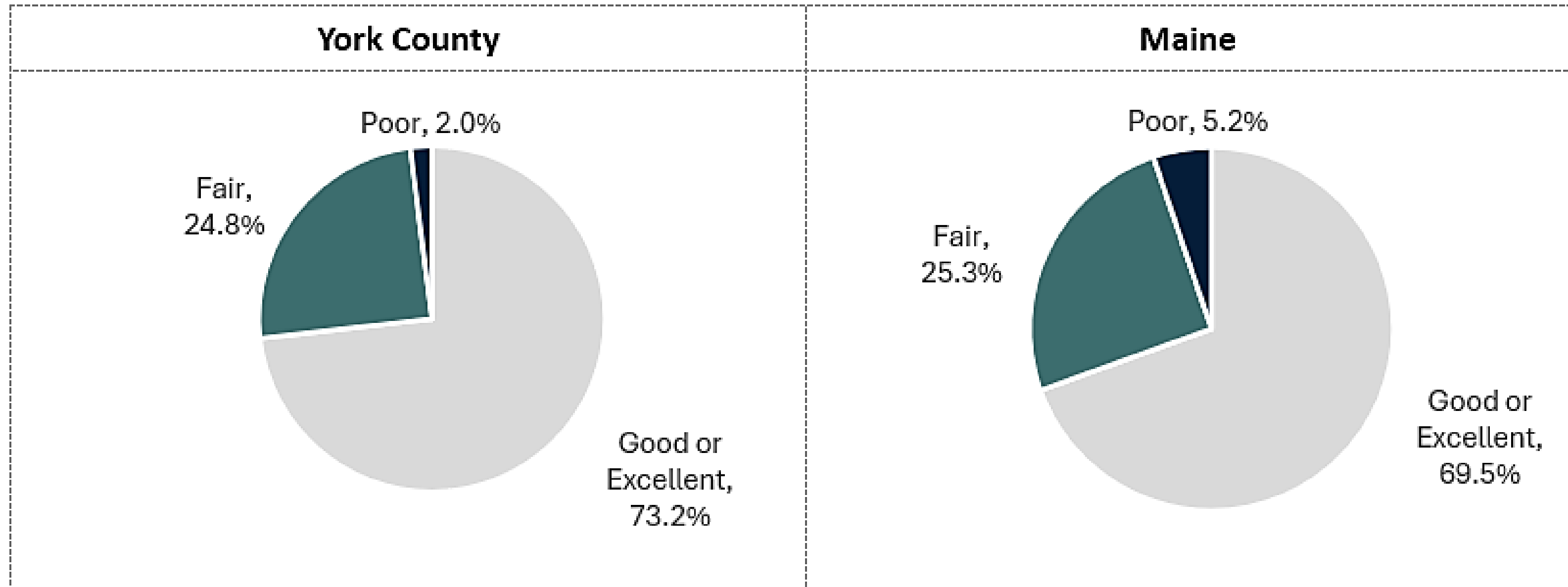


Community Engagement

Community Survey: Physical Health Status

Total Participants	
York County	Maine
247	3,967

How would you rate your own physical health?

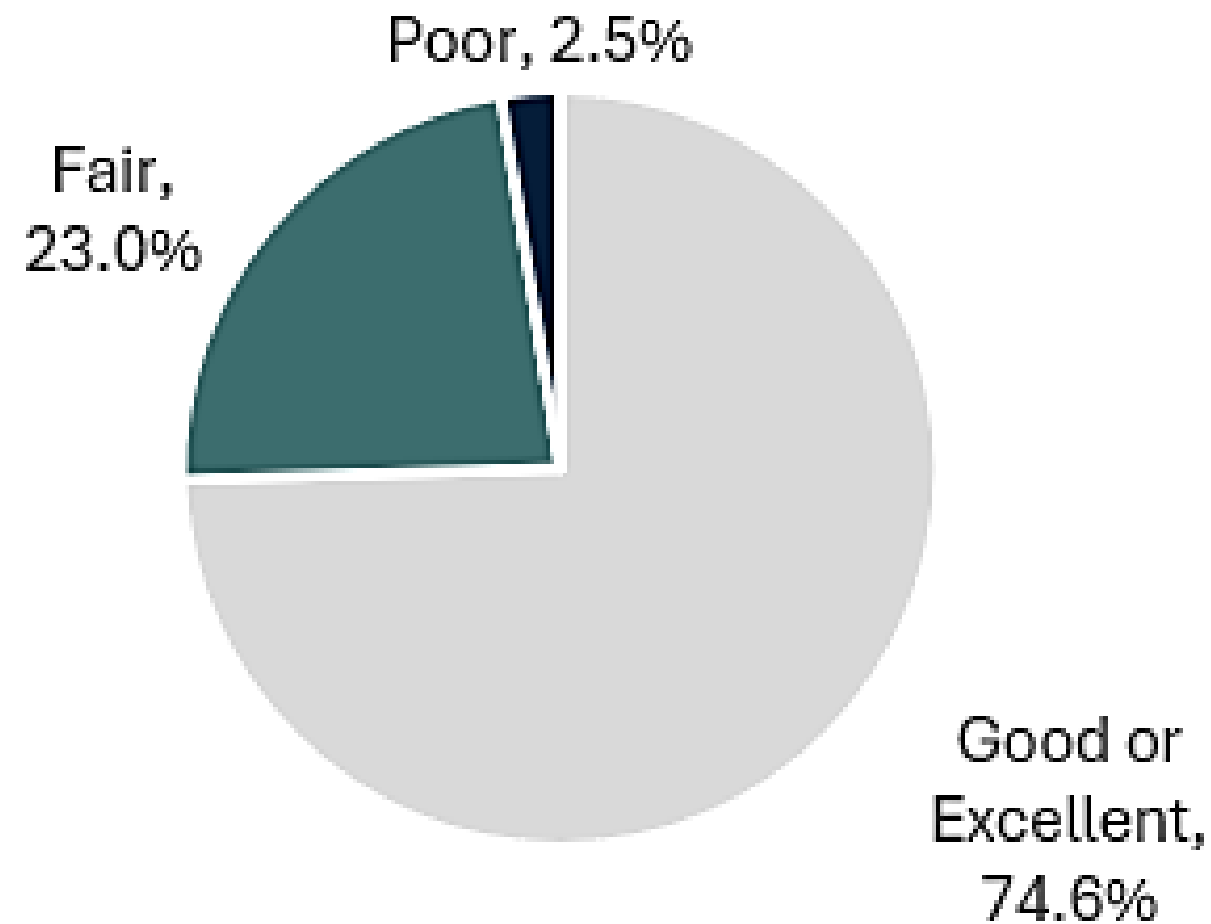


Community Engagement

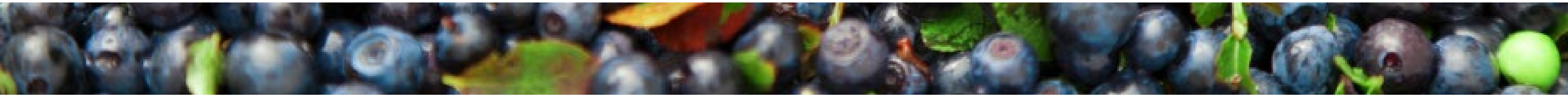
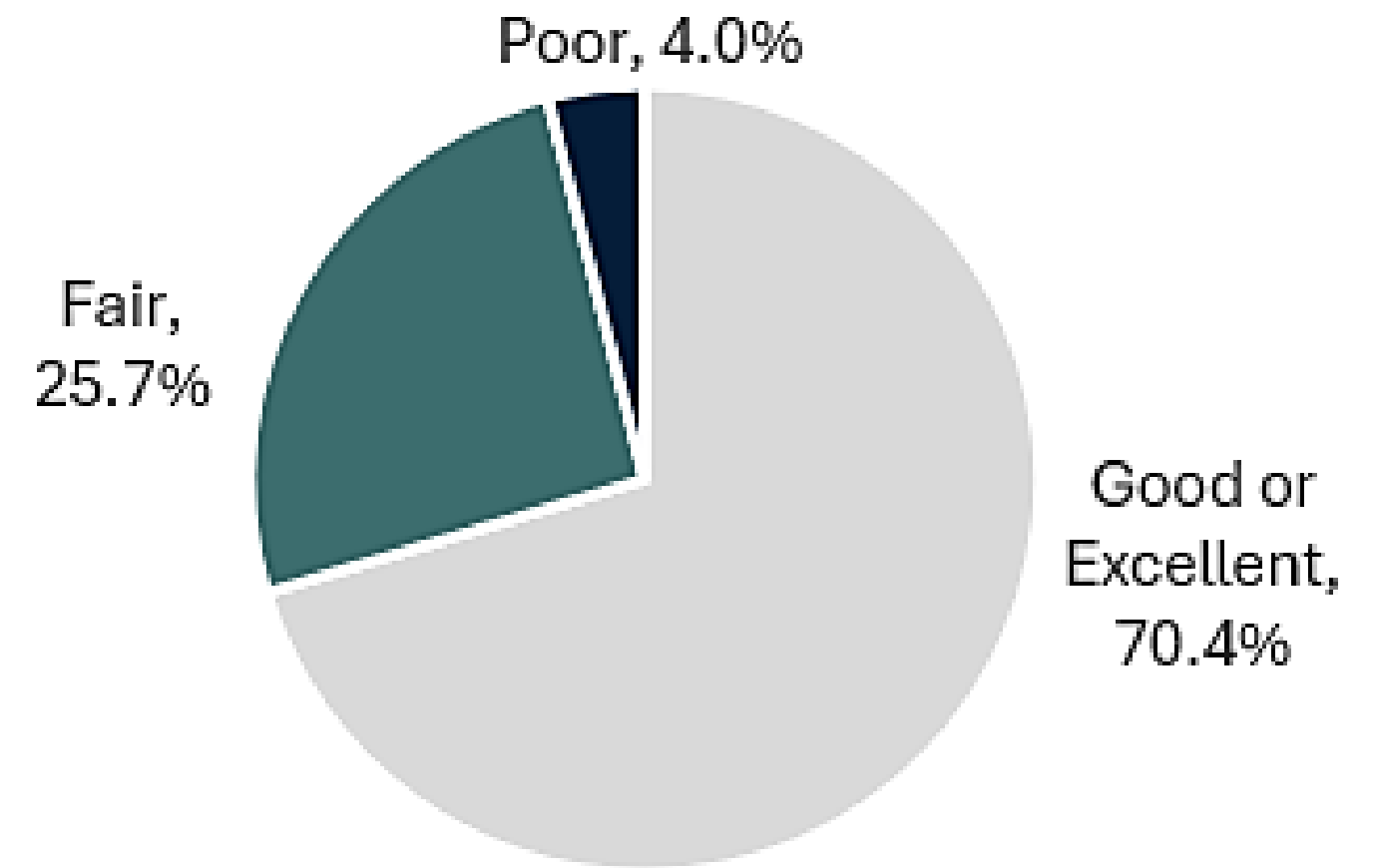
Community Survey: Mental Health Status

How would you rate your own mental health?

York County



Maine

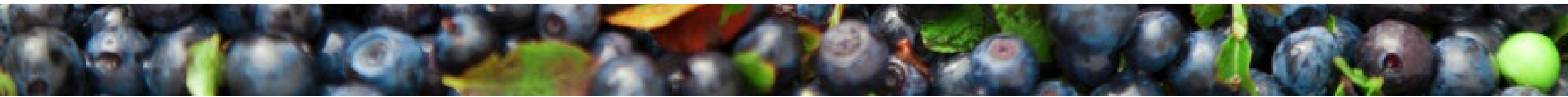


Community Engagement

Community Survey: Community Health Status

Top 5 social concerns that negatively impact your community

York County		Maine	
1)	Mental health issues (anxiety, depression, suicide, etc.)	1)	Mental health issues (anxiety, depression, suicide, etc.)
2)	Substance use (alcohol, cannabis, prescription drugs, illicit drugs, etc.)	2)	Substance use (alcohol, cannabis, prescription drugs, illicit drugs, etc.)
3)	Housing insecurity	3)	Low incomes and poverty
4)	Tobacco or nicotine use (cigarettes, cigars, vapes, dip, nicotine patches, etc.)	4)	Housing insecurity
5)	Lack of transportation	5)	Obesity



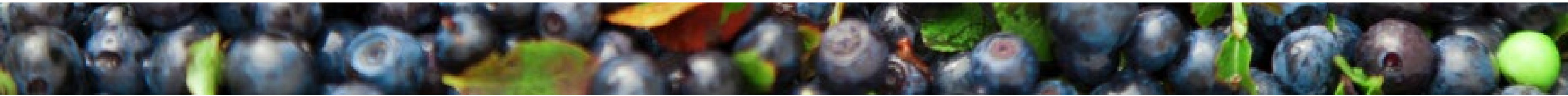
Community Engagement

Community Survey: Community Health Needs

Please indicate if _____ negatively impacts you, a loved one, and/or the community where you live.

Percentage of respondents who answered 'Impacts me, a loved one, and/or my community'

York County		Maine	
Mental health needs	75.9%	Economic needs	76.1%
Chronic health conditions (cancer, high blood pressure, heart disease, high cholesterol, etc.)	75.3%	Chronic health conditions (cancer, high blood pressure, heart disease, high cholesterol, etc.)	75.7%
Economic needs	74.4%	Mental health needs	73.6%
Housing needs	70.7%	Substance use	68.5%
Substance use	68.4%	Housing needs	68.5%
Environmental needs	58.5%	Transportation needs	60.9%
Transportation needs	54.0%	Environmental needs	58.4%
Public safety needs	50.4%	Public safety needs	53.7%





Prioritization Voting Results



Results

Community Conditions

1. Housing (95.0%)
2. Transportation (75.0%)
3. Poverty (50.0%)
4. Provider Availability (45.0%)
5. Childcare (30.0%)

Protective & Risk Factors

1. Physical Activity (50.0%)
2. Nutrition (50.0%)
3. Adverse Childhood Experience (50.0%)
4. Illicit Drug Use (50.0%)
5. Adult Screening & Preventative visits (45.0%)

Health Conditions & Outcomes

1. Mental Health (90.0%)
2. Substance Use Related Injury & Death (75.0%)
3. Cardiovascular Disease (50.0%)
4. Obesity/Weight Status (50.0%)
5. Cognitive Decline (45.0%)

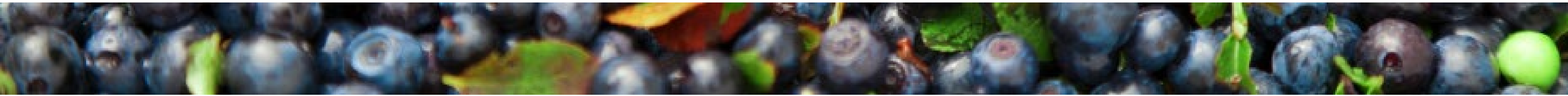


Breakout Discussions

Breakout Discussion #1

Please discuss the results of the community needs assessment and the results of the first round of priority voting:

- **Was anything surprising or new?**
- **Did the findings confirm anything for you?**
- **Are any priorities missing from the initial round of voting that should be included in a second round of voting?**





Voting Tool

Based on the presentation, discussions in your breakout, materials, and your knowledge, expertise, and experiences, please vote for the top THREE health and well-being priorities for each of the topic areas:

**Community Conditions
Protective & Risk Factors
Health Conditions & Outcomes**

as they relate to your County.





Results

Community Conditions

1. Housing (94.1%)
2. Poverty (64.7%)
3. Provider Availability (58.8%)

Protective & Risk Factors

1. Adverse/Positive Childhood Experiences (76.5%)
2. Physical Activity (70.6%)
3. Nutrition (58.8%)

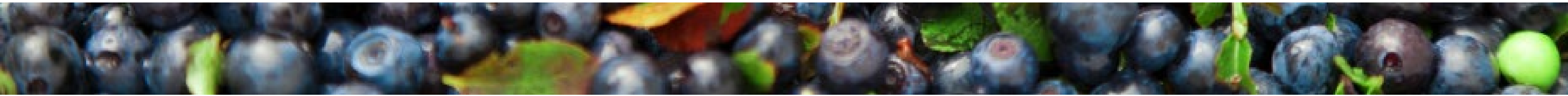
Health Conditions & Outcomes

1. Mental Health (100.0%)
2. Substance Use Related Injury & Death (70.6%)
3. Cardiovascular Disease (47.1%)

Breakout Discussion #2

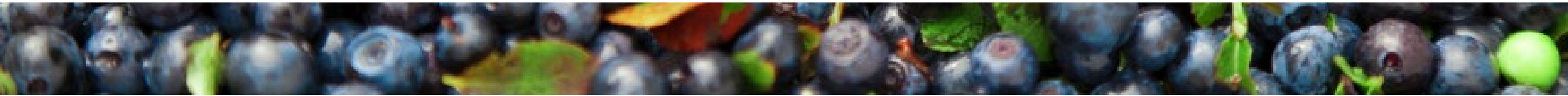
Please discuss the following questions as they relate to the priorities in your topic area:

- **Are there other specific populations to focus on within these priorities?**
- **What do you see as the root causes and/or contributing factors to these priorities?**
- **Which sectors are working on these priorities? Where is there potential for collaboration?**
- **What community assets and resources are missing from the pre-populated list to address these priorities?**



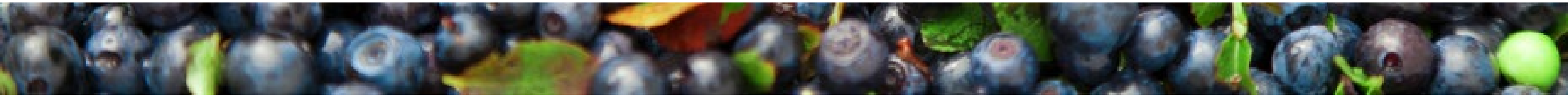
Breakout Discussion #3

Review the responses from the group prior to you. As a group, add comments and additional information and suggest edits, as applicable.



Breakout Discussion #4

Review the responses from the group prior to you. As a group, add comments and additional information and suggest edits, as applicable.





Final Remarks