



Maine Shared Community Health Needs Assessment

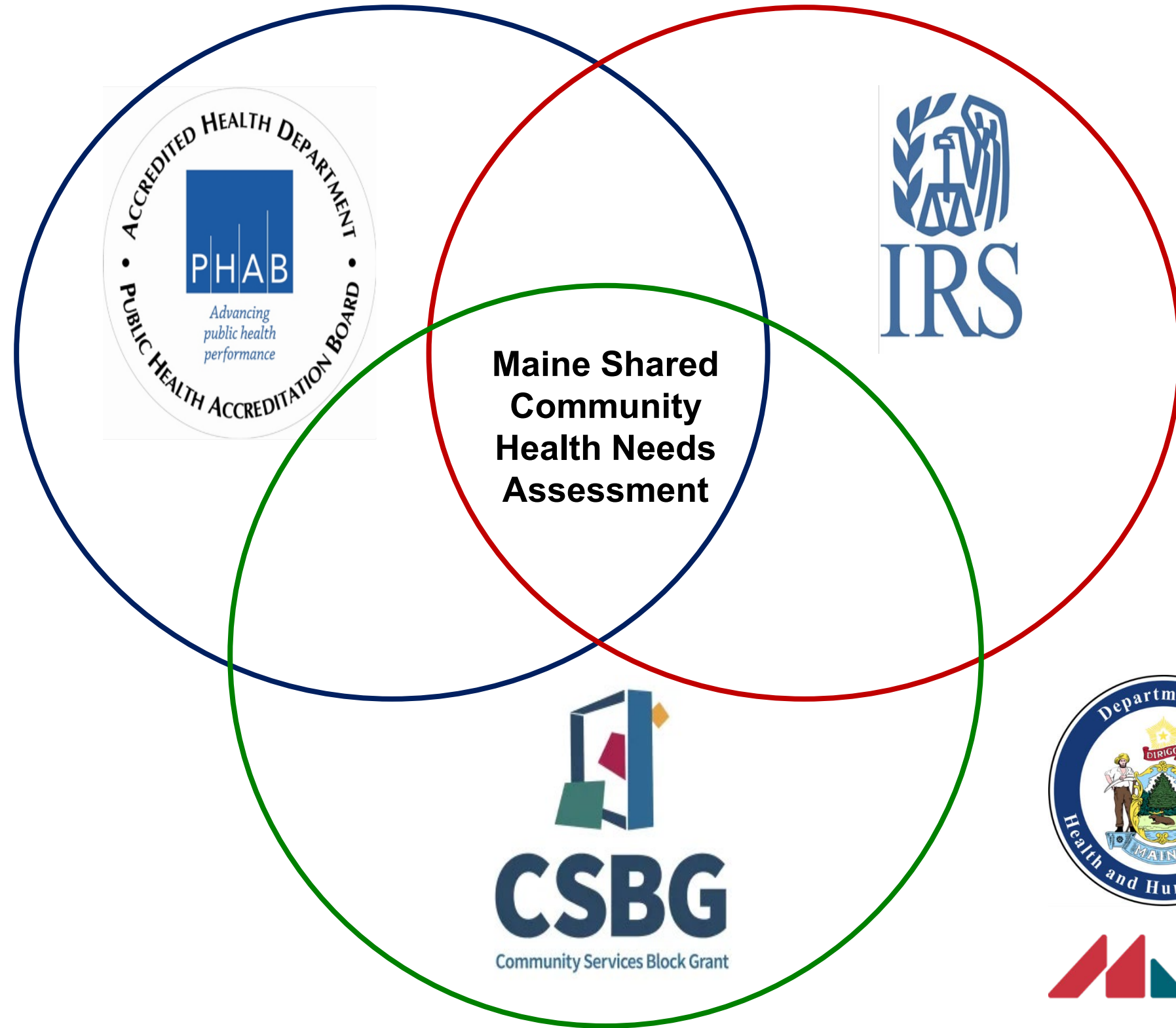
Franklin County

September 18, 2024

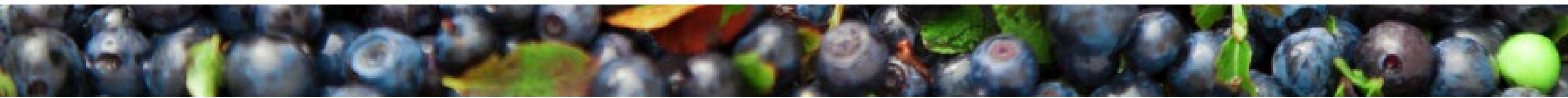
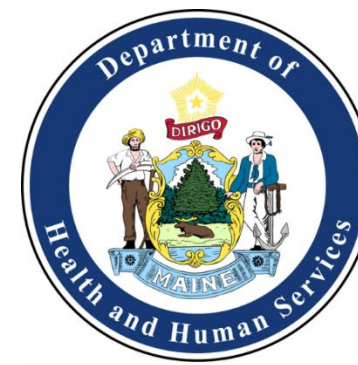


Welcome

Maine Shared CHNA



- **Steering Committee**
- **Program Manager**
- **Standing Committees**
 - **Metrics**
 - **Community Engagement**
- **Ad-Hoc Committees**
- **Local Planning Teams**

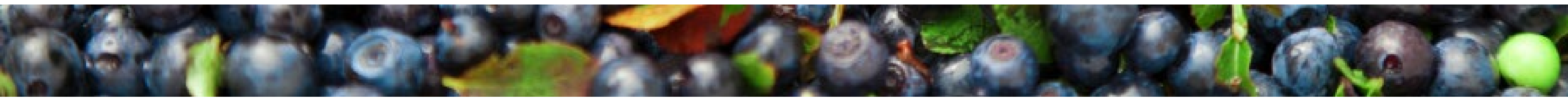


Maine Shared CHNA

2024 CHNA Data Analysis, Community Engagement, and Prioritization Process & Timeline



Survey to be conducted statewide, may include both general community members and professionals; Focus Groups to be conducted with community members, both low-income population and health equity groups; Key Informant Interviews to be conducted when focus groups aren't feasible or to collect more information; Stakeholder forums to be conducted with professionals and advocates

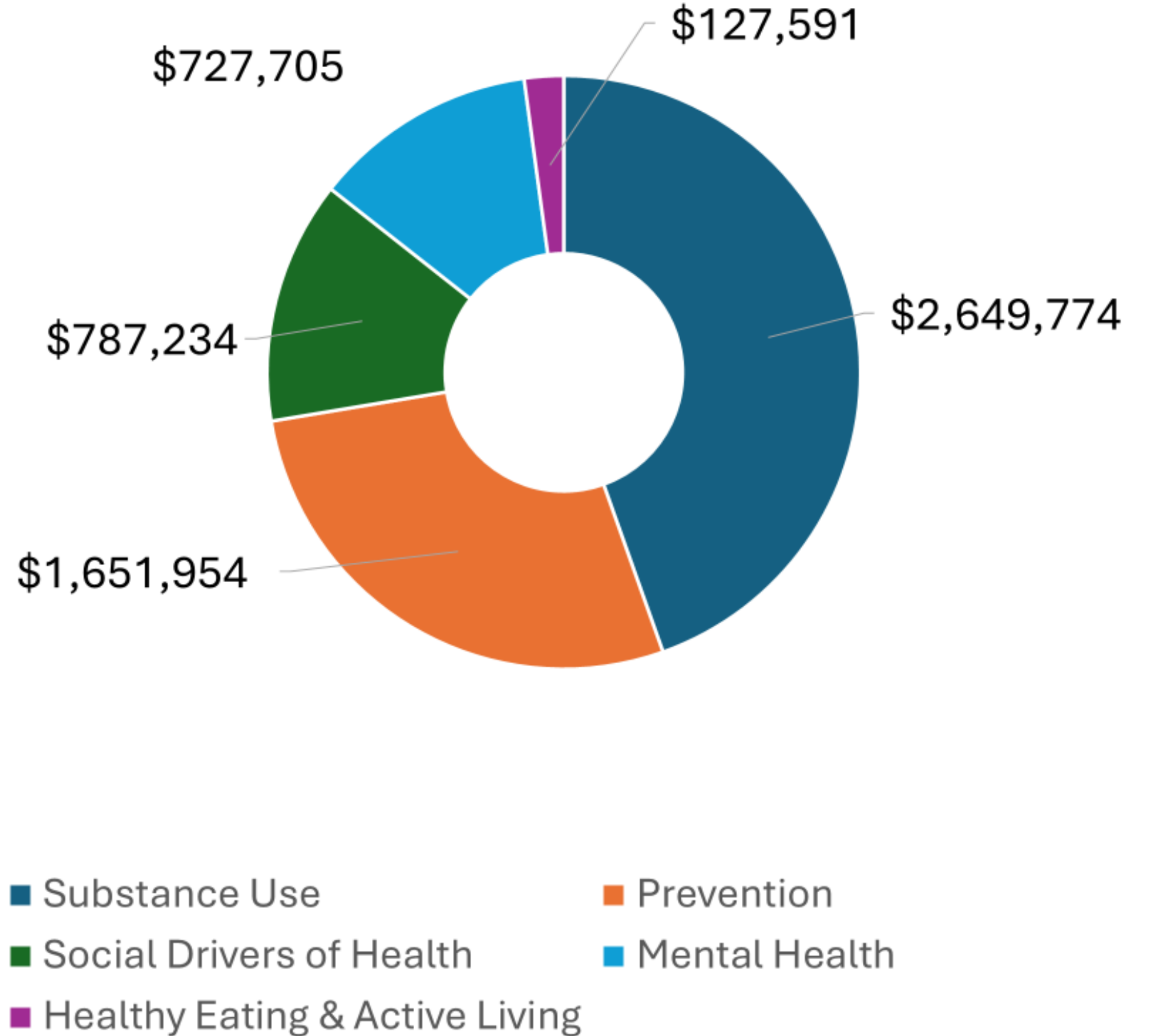


Reflections

Additional grants secured by community partners

- Franklin County Economic Development
 - 53M – increase high speed internet across the County
 - Improve digital literacy
- Franklin County Sheriff's Department
 - Almost 700,000 to address school safety and violence prevention and mental health

Franklin County Community Health Funding Awarded
(2022-2024)



Local Planning Committee

Western Maine CAP

Danielle
Flannery and
Kat Renshaw

Maine CDC

Lauren Gauthier
and Meghan
Richards

MaineHealth
Healthy Community
Coalition

Ericka Buote
and LeeAnna
Lavoie

House Keeping



Forum Agenda

- Breakout room **1** – Community Conditions: **LeeAnna**
- Breakout room **2** – Protective and Risk Factors: **Patty**
- Breakout room **3** – Health Conditions & Outcomes: **Lorri**

Time	Topic	Presenter
1:00-1:10	Welcome	LeeAnna
1:10-1:45	Presentation of Findings and Voting	Scott and Kate
1:45-1:50	Transition to Breakout Session	Scott and Kate
1:50-2:15	Break out session 1 – Discussion of Pre-Forum Prioritization	Facilitators
2:15-2:30	Breakout report out and voting	Scott and Kate
2:30-2:40	10 min break – Transition to Breakout	All
2:40- 3:05	Transition to Breakout session 2	All
3:10-3:25	#2 Deeper Discussion of Results by Category	Facilitators
3:30-3:45	#3 Deeper Discussion of Results by Category	Facilitators
3:45-4:00	#4 Deeper Discussion of Results by Category	Facilitators
4:00-4:15	Closing and next steps	Scott and Kate



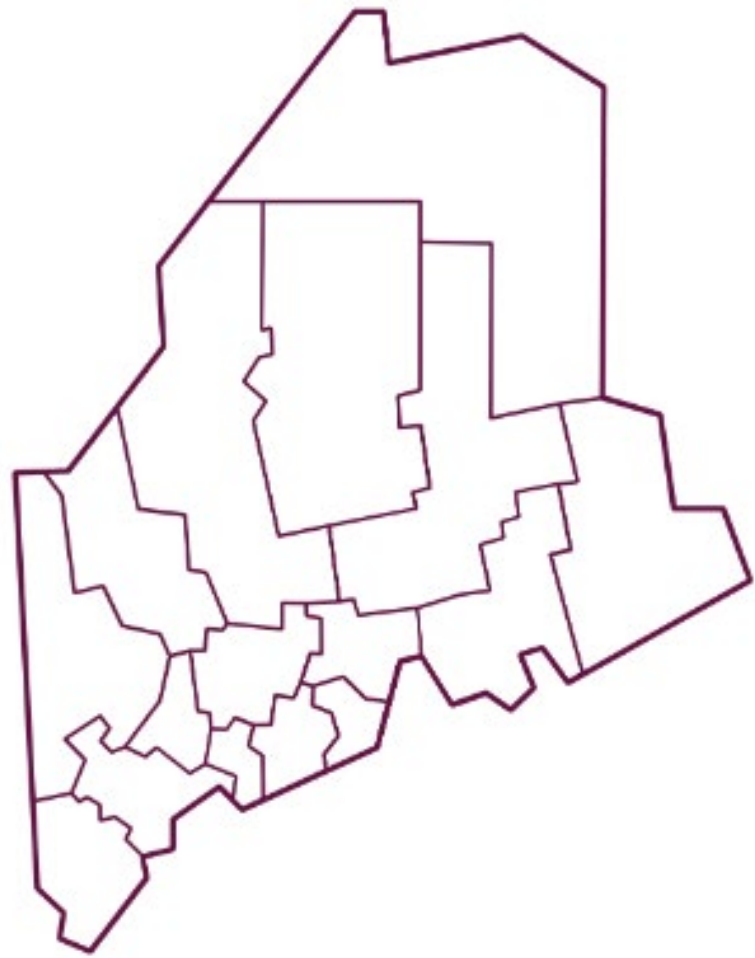
Key Findings

Demographics

Total Population

29,839

2.1% of total state population



Population by Age



Age Under 18

17.4%



Age 18-64

59.7%

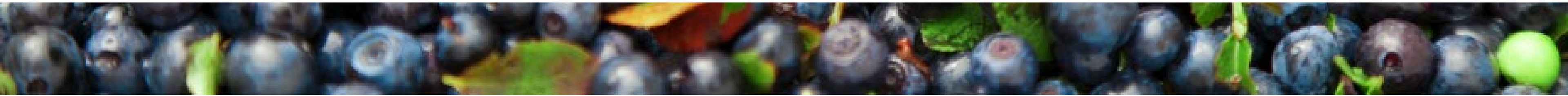
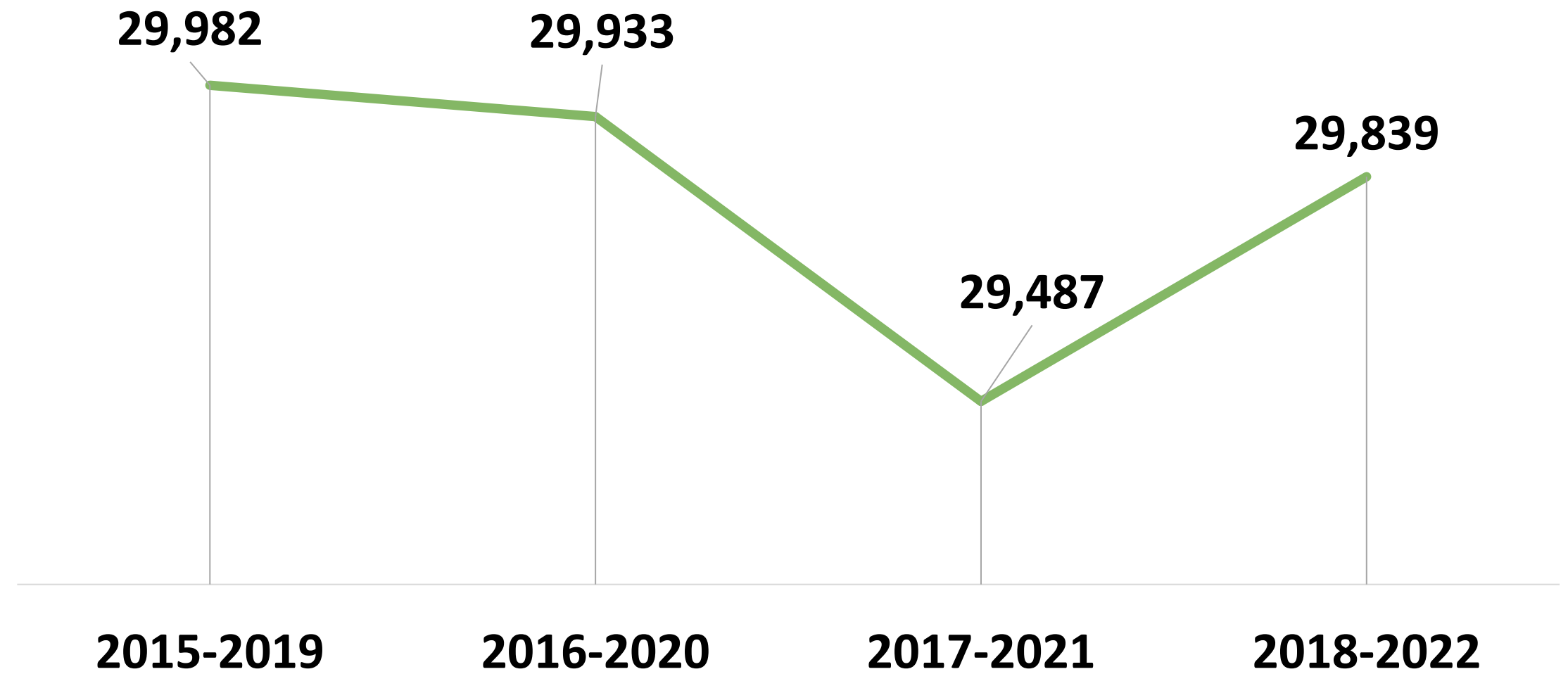


Age 65+

22.9%

U.S. Census Bureau ACS Five-year Estimates 2018-2022

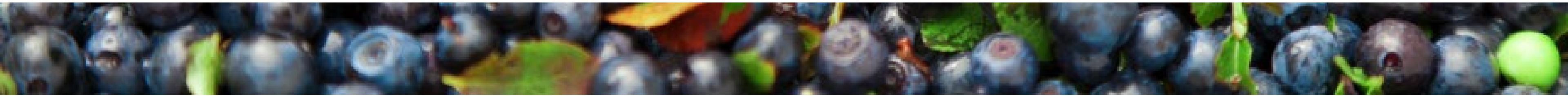
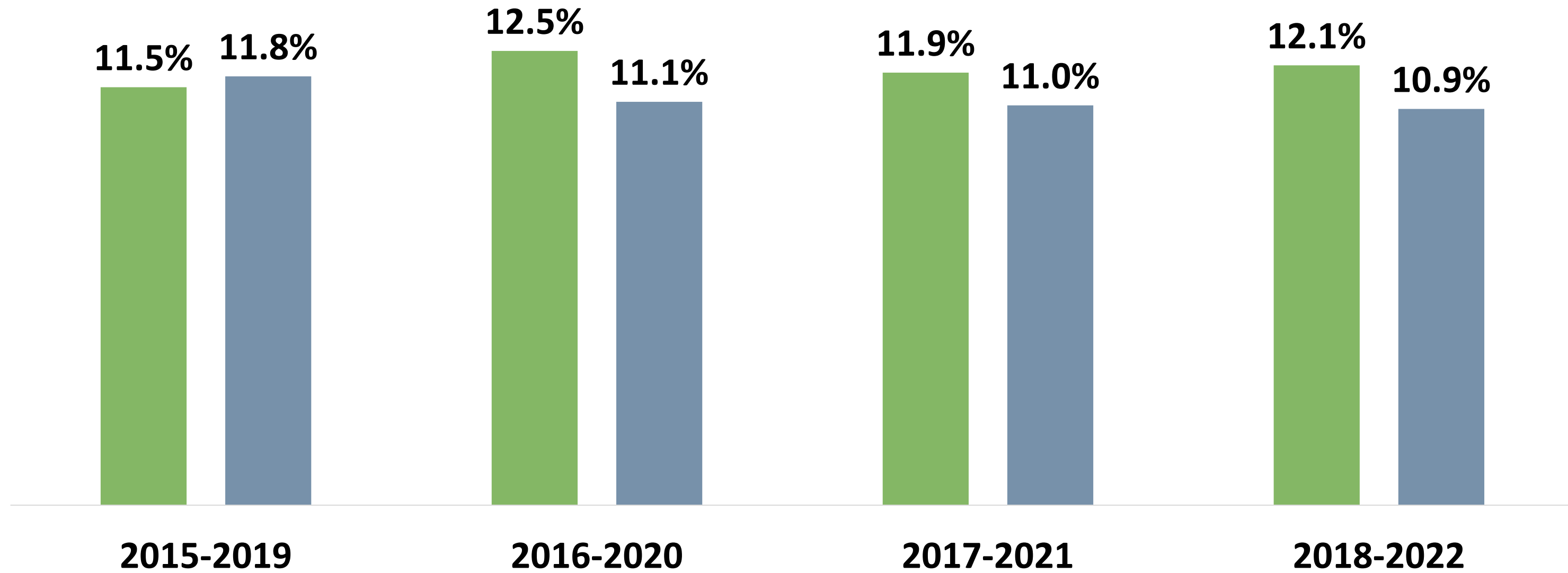
County Population



Demographics

Individuals Living in Poverty

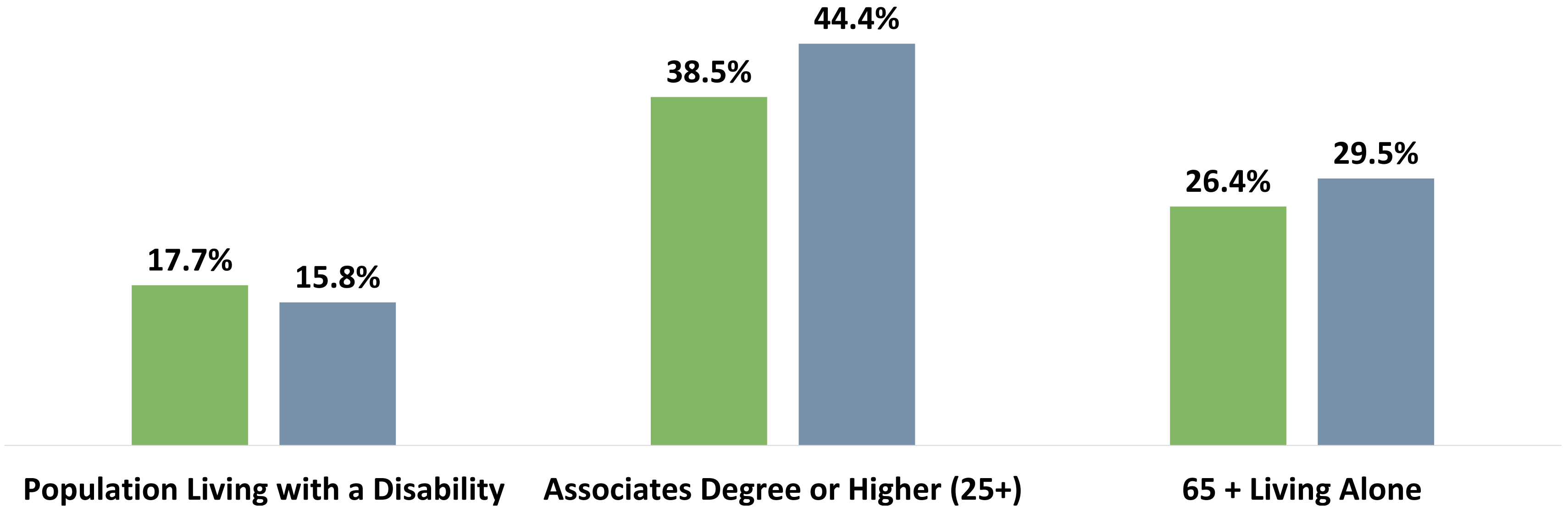
■ Franklin County ■ Maine



Demographics

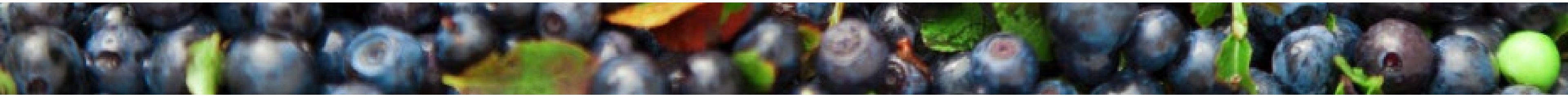
Social Drivers of Health

■ Franklin County ■ Maine



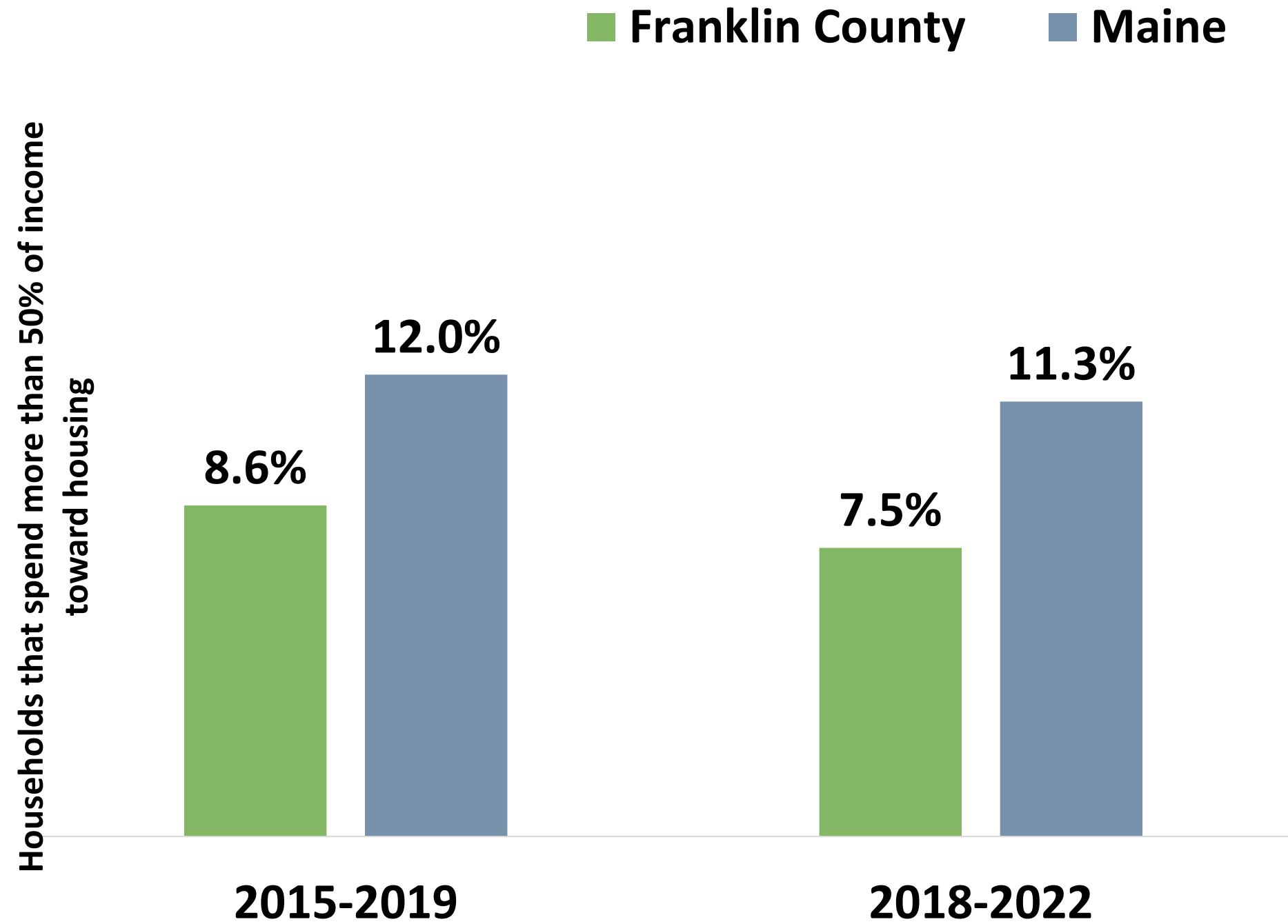
U.S Census Bureau ACS Five-year Estimates 2018-2022

People Living with a Disability, U.S Census Bureau ACS Five-year Estimates 2017-2021



Community Conditions

Cost-burdened Households



Transportation



36.2%

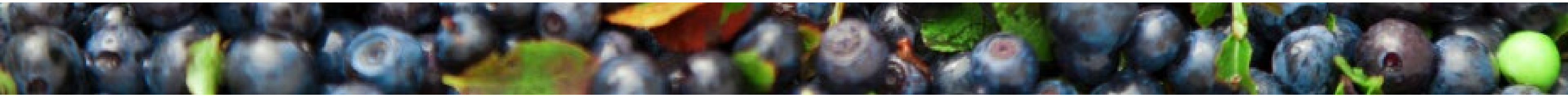
Commute of greater than 30 minutes driving alone



3.9%

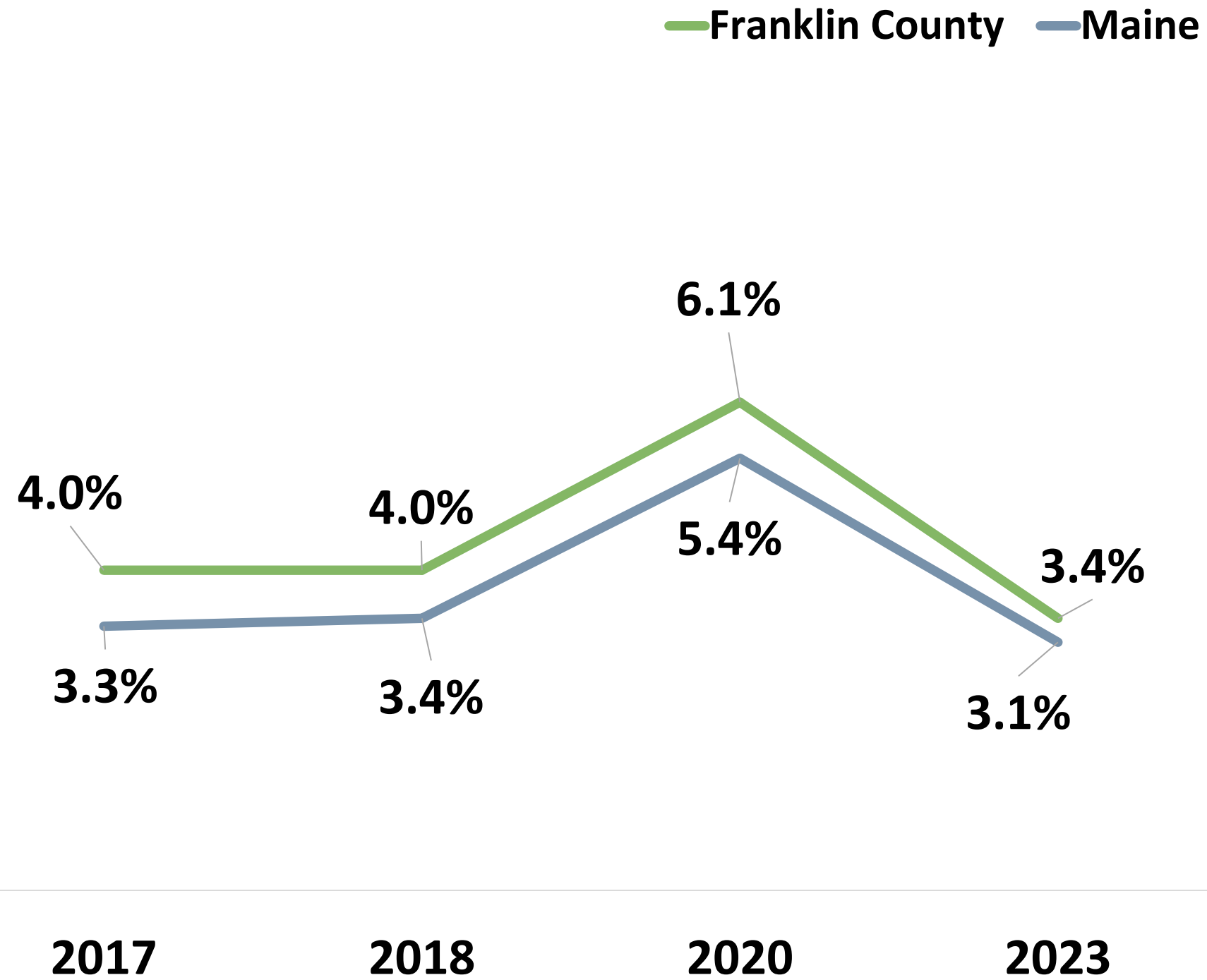
No vehicle for the household

*U.S. Census Bureau ACS Five-year Estimates 2018-2022
No Vehicle for the Household, U.S. Census Bureau ACS Five-year Estimates 2017-2021*



Community Conditions

Unemployment



Economic Wellbeing



Median household income

2015-2019: \$51,422

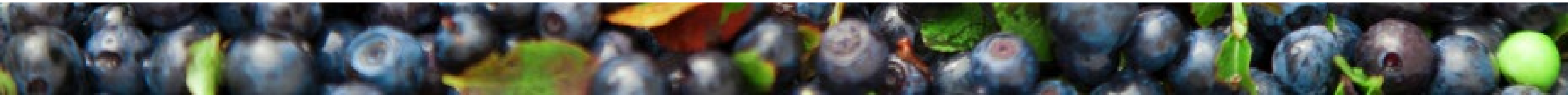
2018-2022: \$56,890



Households living above the federal poverty level but below the Asset Limited Income Constrained Employed threshold of financial survival

2019: 30.2%

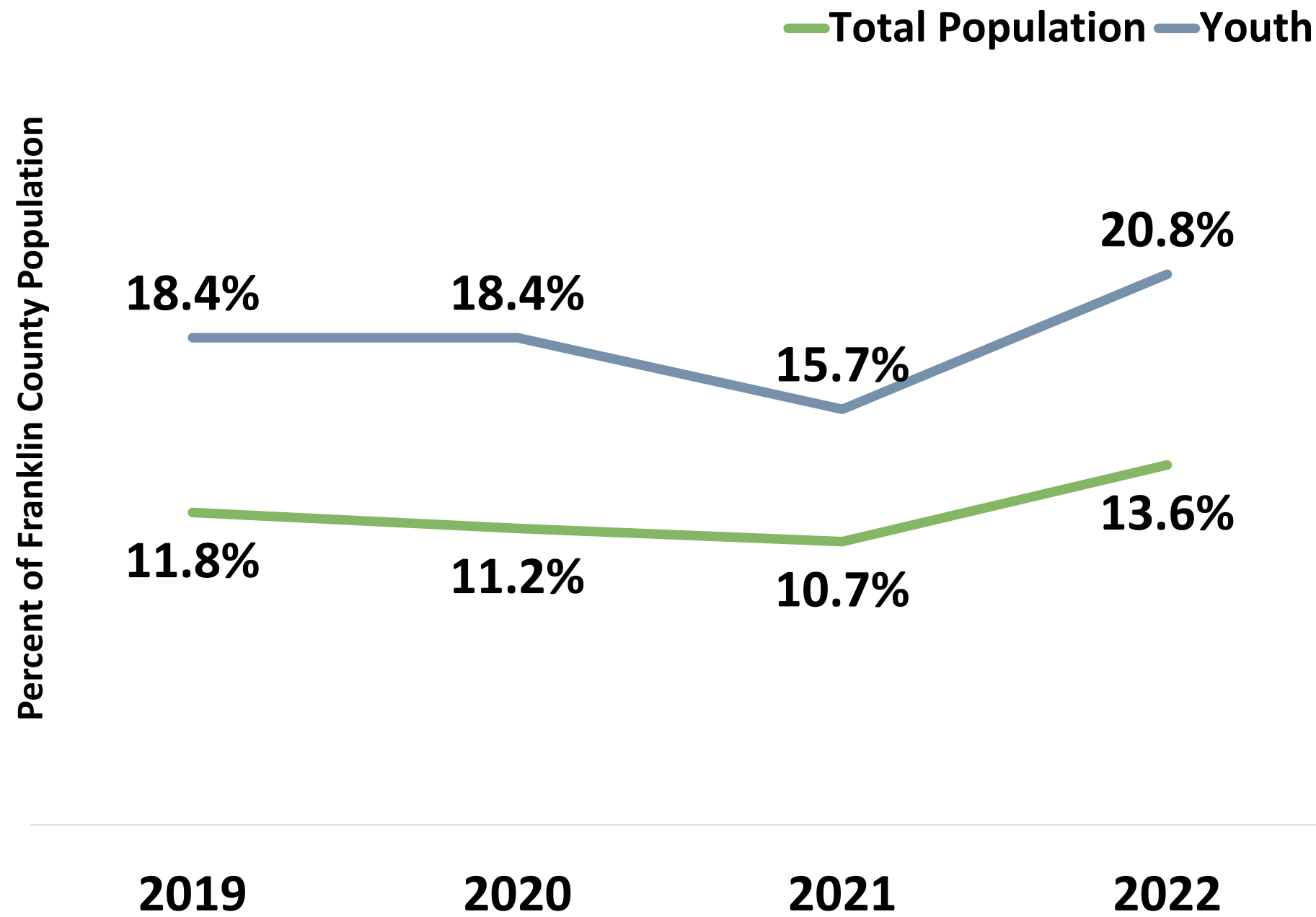
2022: 36.3%



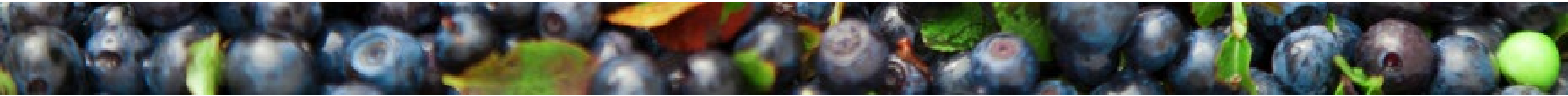
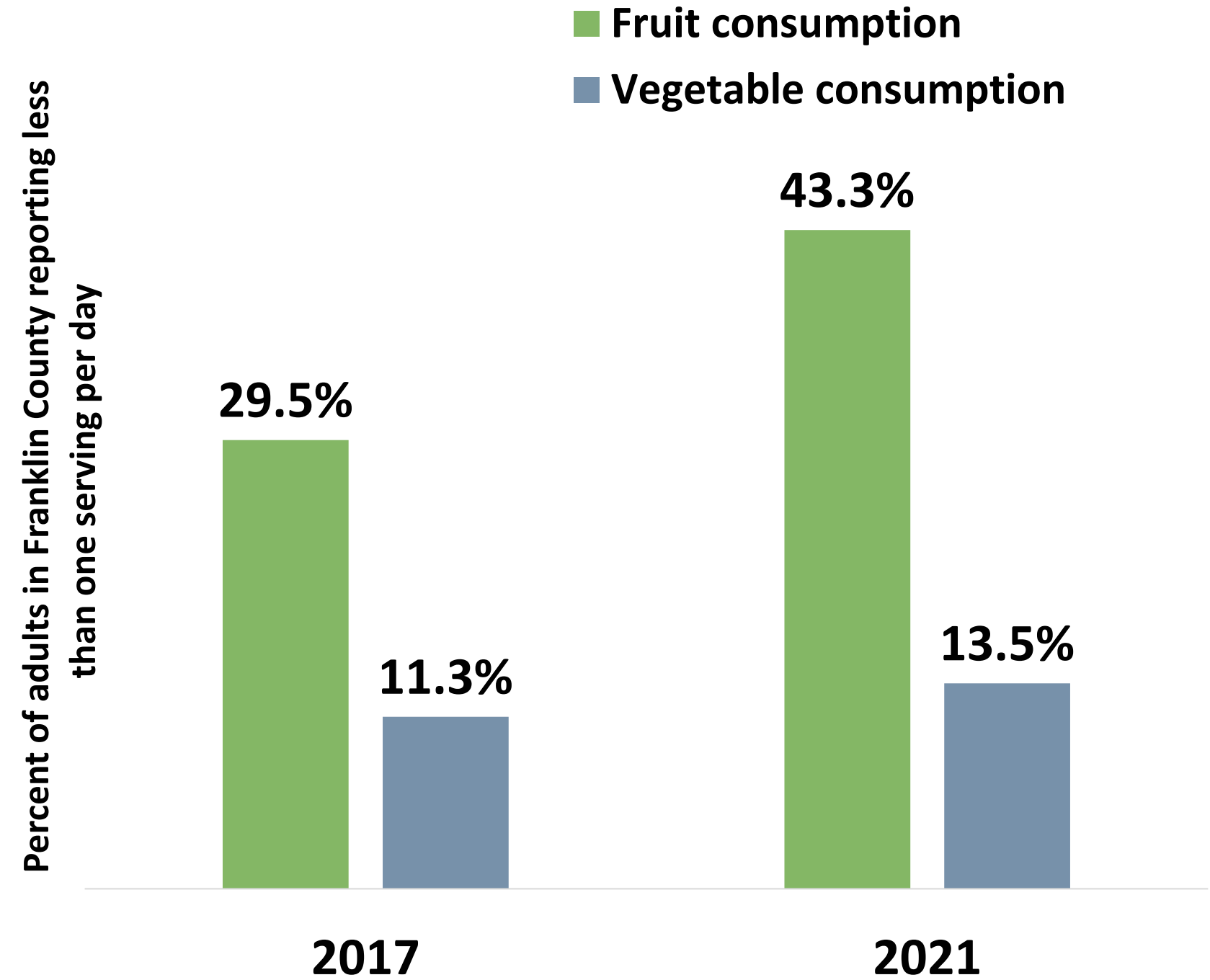
Community Conditions

! Fruit consumption (adults reporting less than one serving per day) – Franklin County is doing **significantly worse** than the state or national average.

Food Insecurity



Fruit & Vegetable Consumption



Community Conditions

Child Care



Child Care Centers

2020: 18

2024: 17

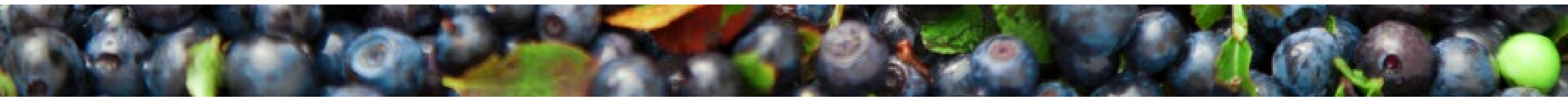
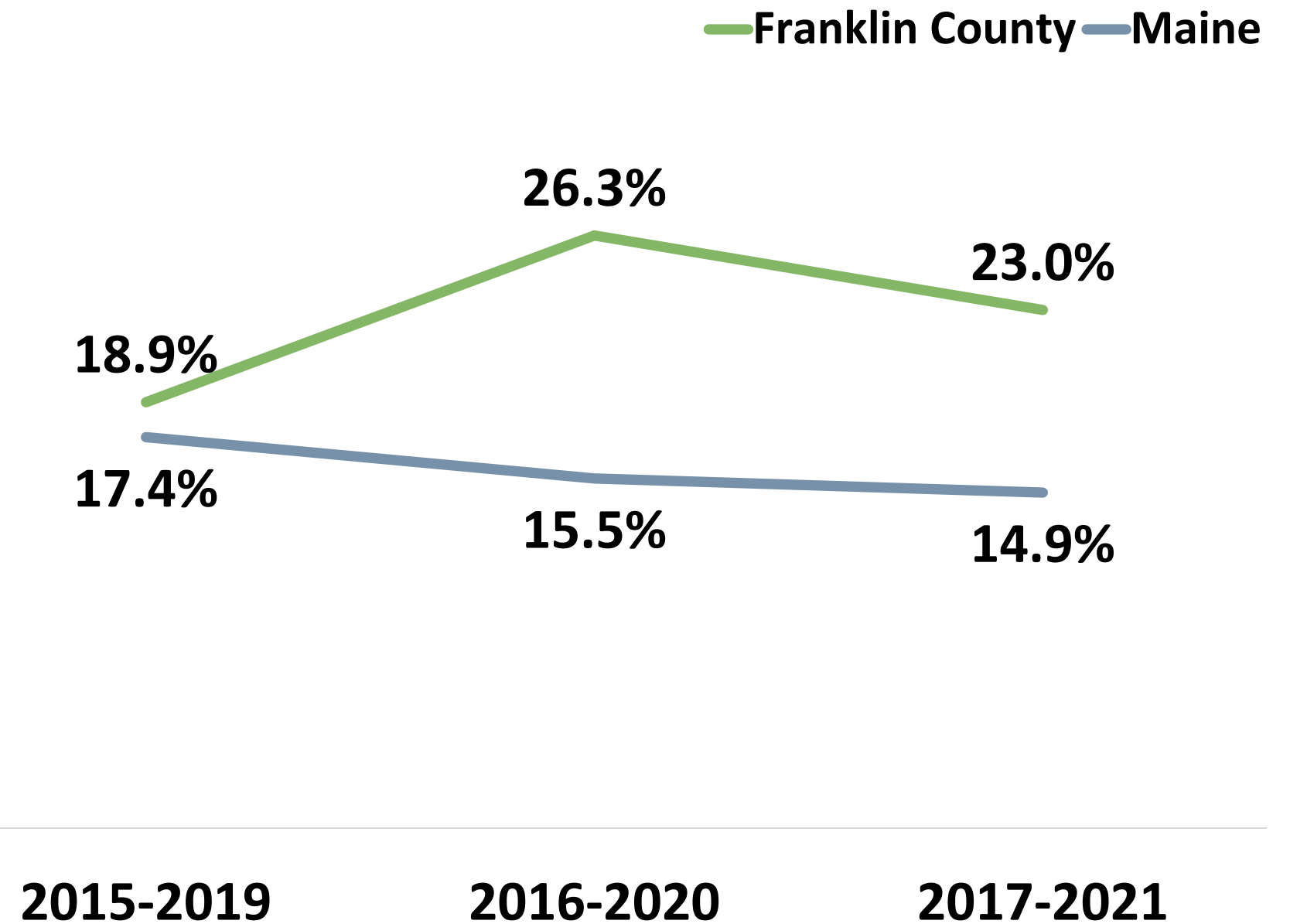


Children served in publicly funded state & local preschools

2019: 61.0%

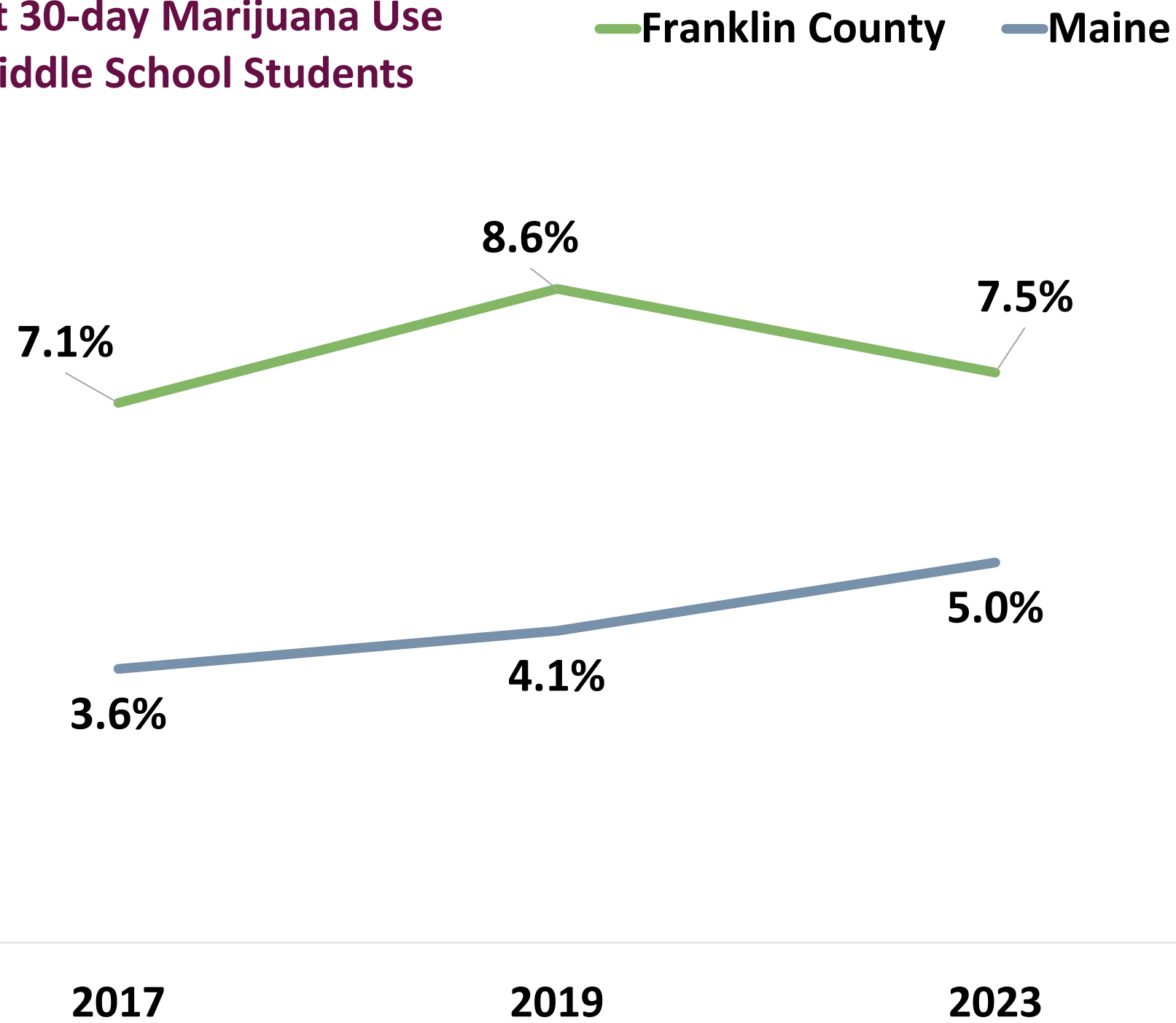
2023: 53.9%

Head Start eligible infants, toddlers, preschool age children

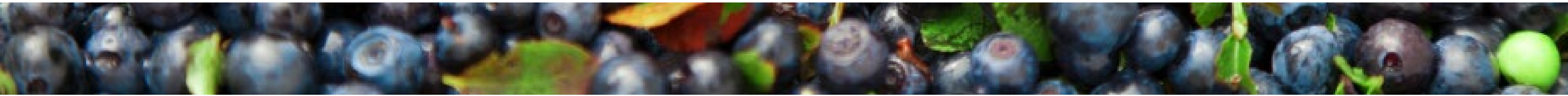
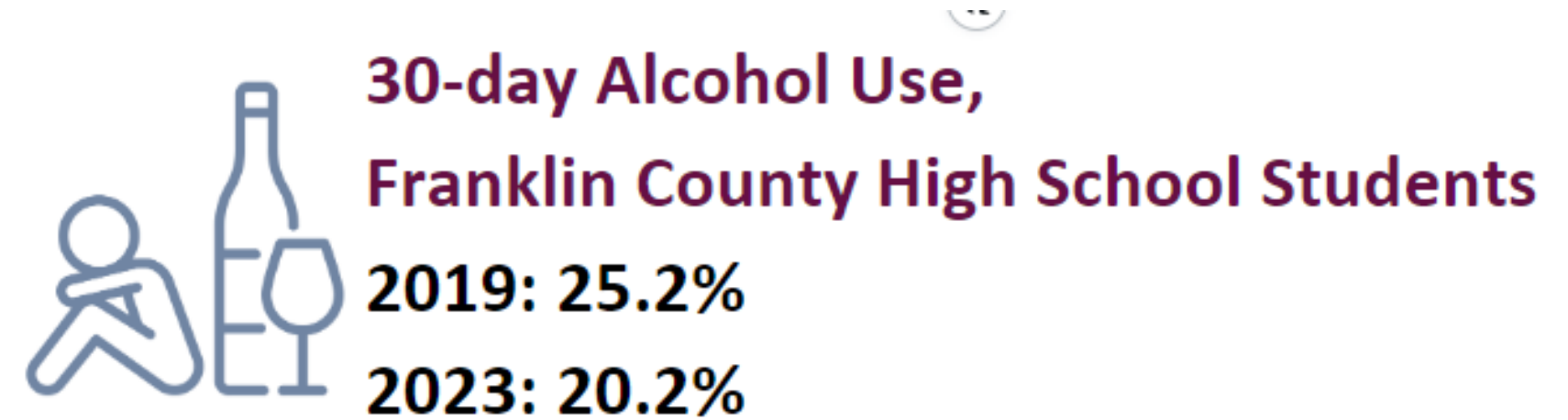
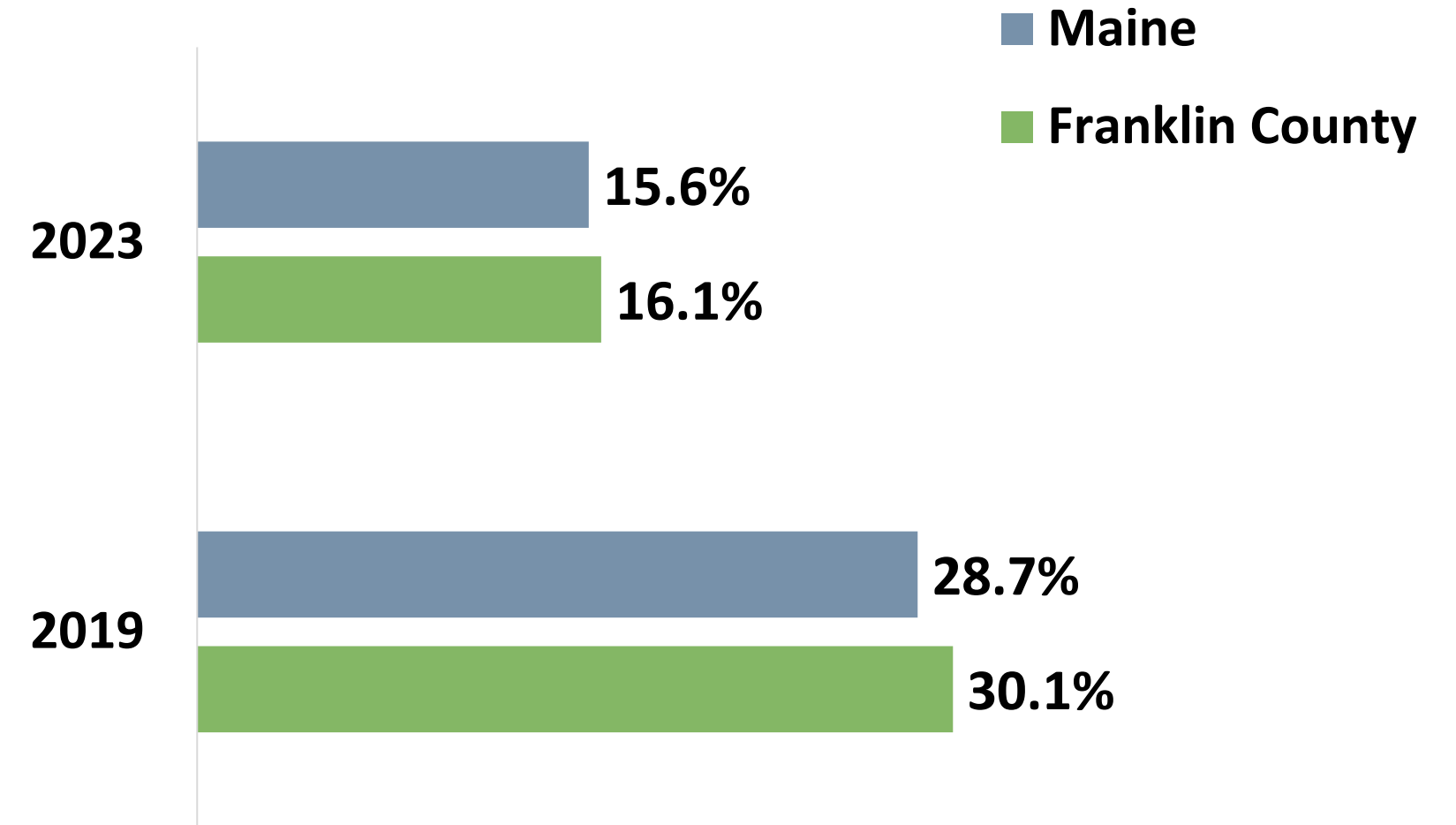


Protective & Risk Factors

Past 30-day Marijuana Use
Middle School Students

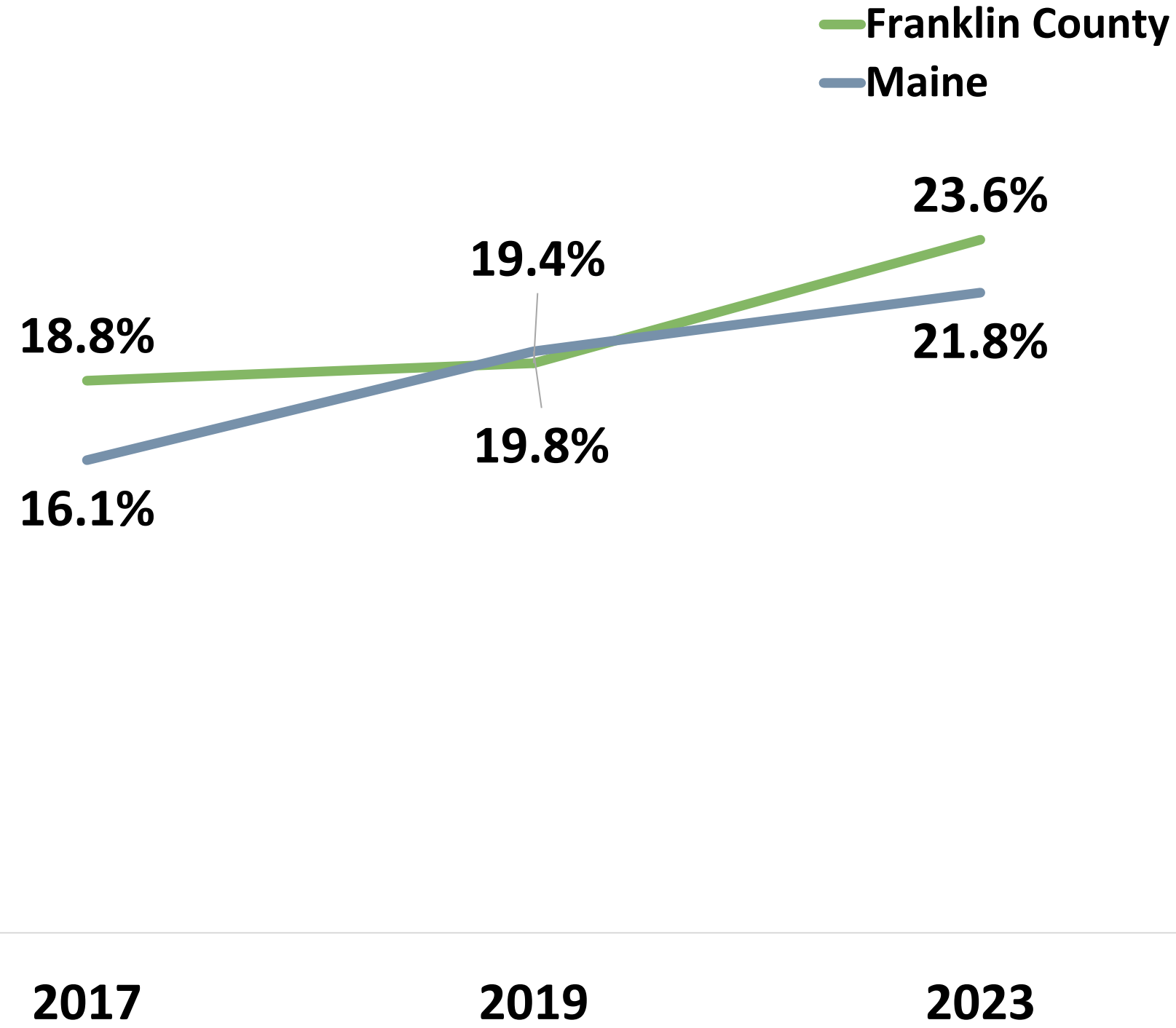


Past 30-day Use of Vaping Products
High School Students

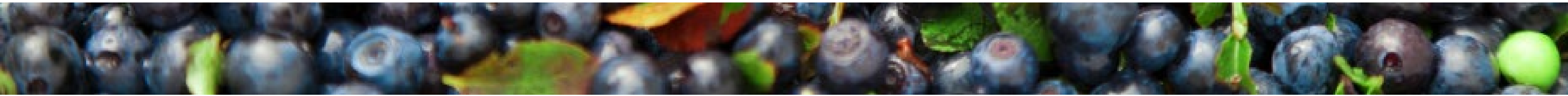
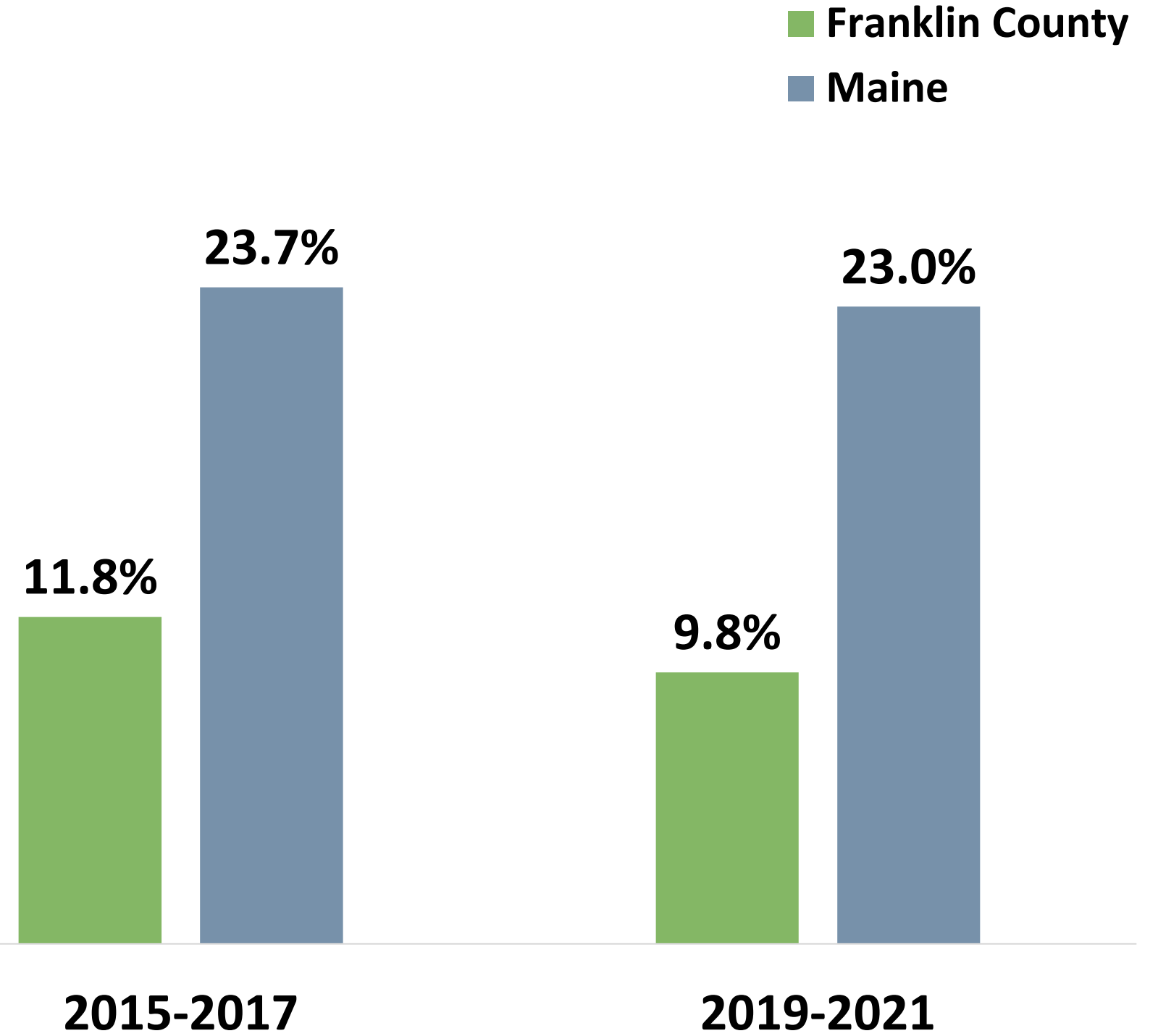


Protective & Risk Factors

**Ever Seriously Considered Suicide
Middle School Students**

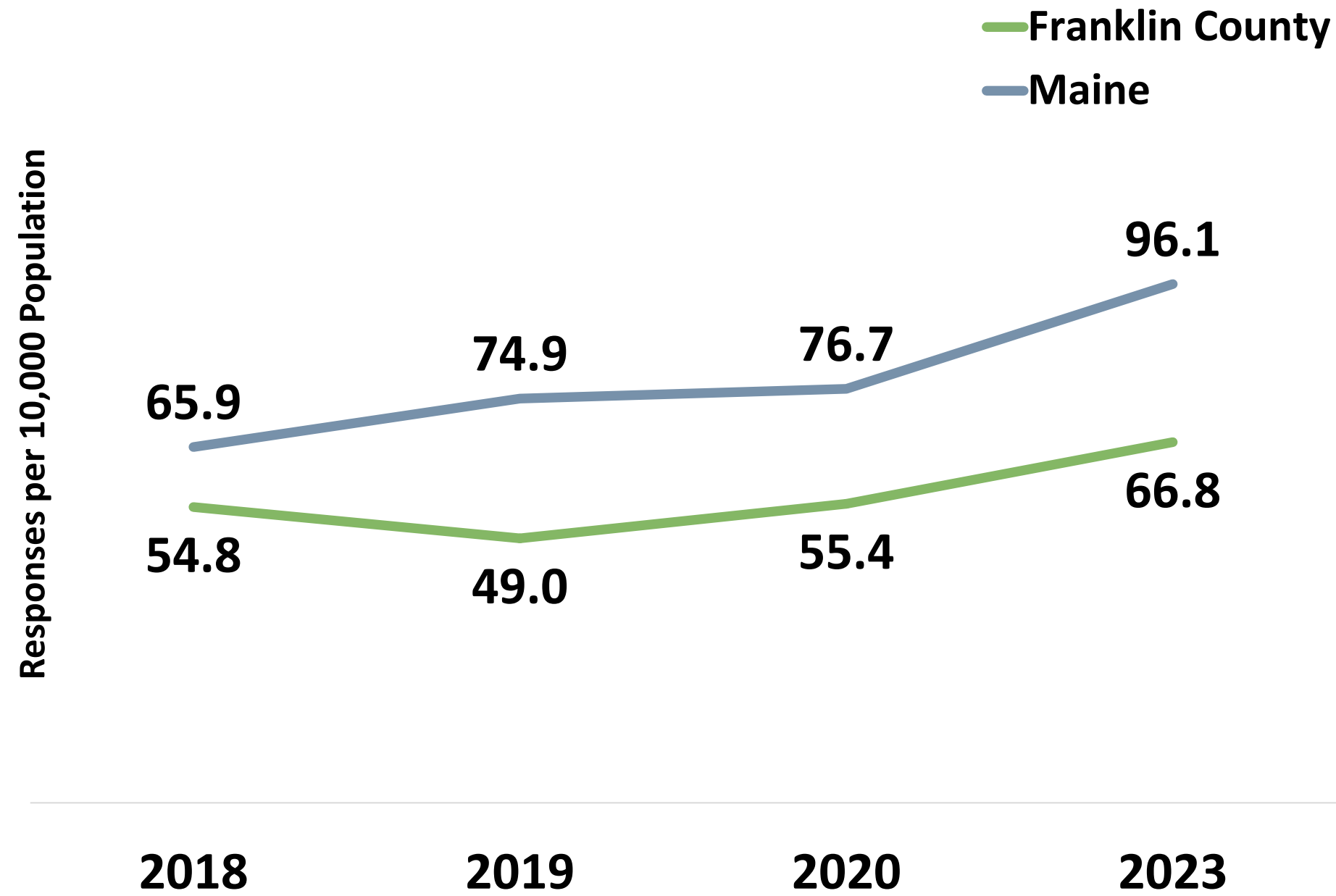


Adult Lifetime Depression

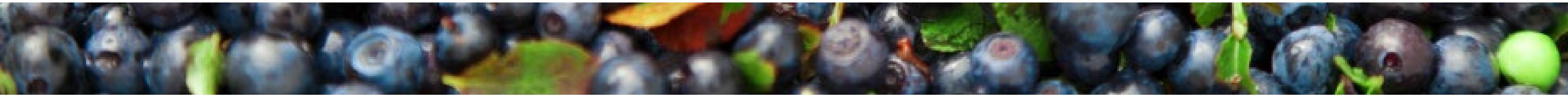
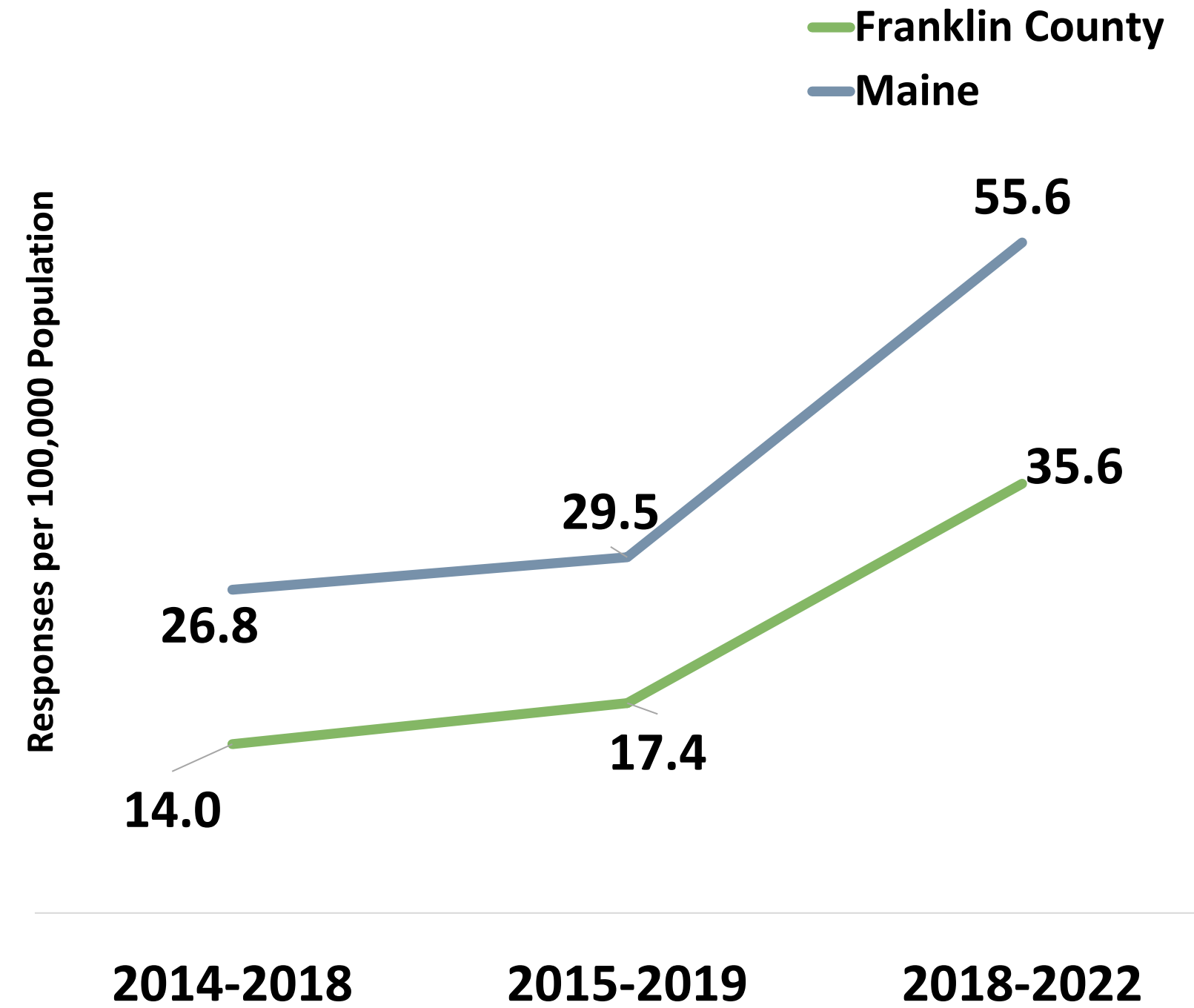


Health Conditions & Outcomes

Overdose Emergency Medical Service Responses



Drug-induced Deaths



Health Conditions & Outcomes

Leading Causes of Death

Rank	United States	Maine	Franklin County
1	Heart Disease	Heart Disease	Cancer
2	Cancer	Cancer	Heart Disease
3	Unintentional Injury	Unintentional Injury	Unintentional Injury
4	Chronic Lower Respiratory Disease	Chronic Lower Respiratory Disease	Chronic Lower Respiratory Disease
5	Cerebrovascular Diseases	COVID-19	COVID-19
6	Alzheimer's Disease	Cerebrovascular Diseases	Alzheimer's Disease
7	Diabetes	Diabetes	Diabetes
8	Influenza & Pneumonia	Alzheimer's Disease	Cerebrovascular Diseases
9	Liver Disease	Liver Disease	Liver Disease
10	Suicide	Influenza & Pneumonia	Influenza & Pneumonia



Cardiovascular disease deaths per 100,000 population

2015-2019: 201.1

2018-2022: 197.5

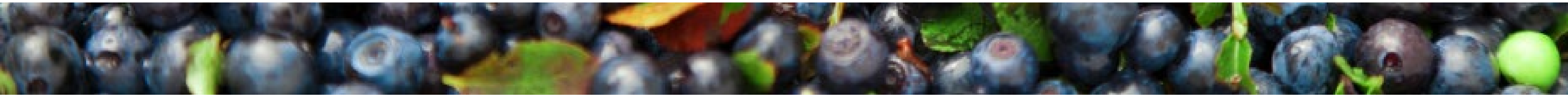


Cancer deaths per 100,000 population

2015-2019: 177.9

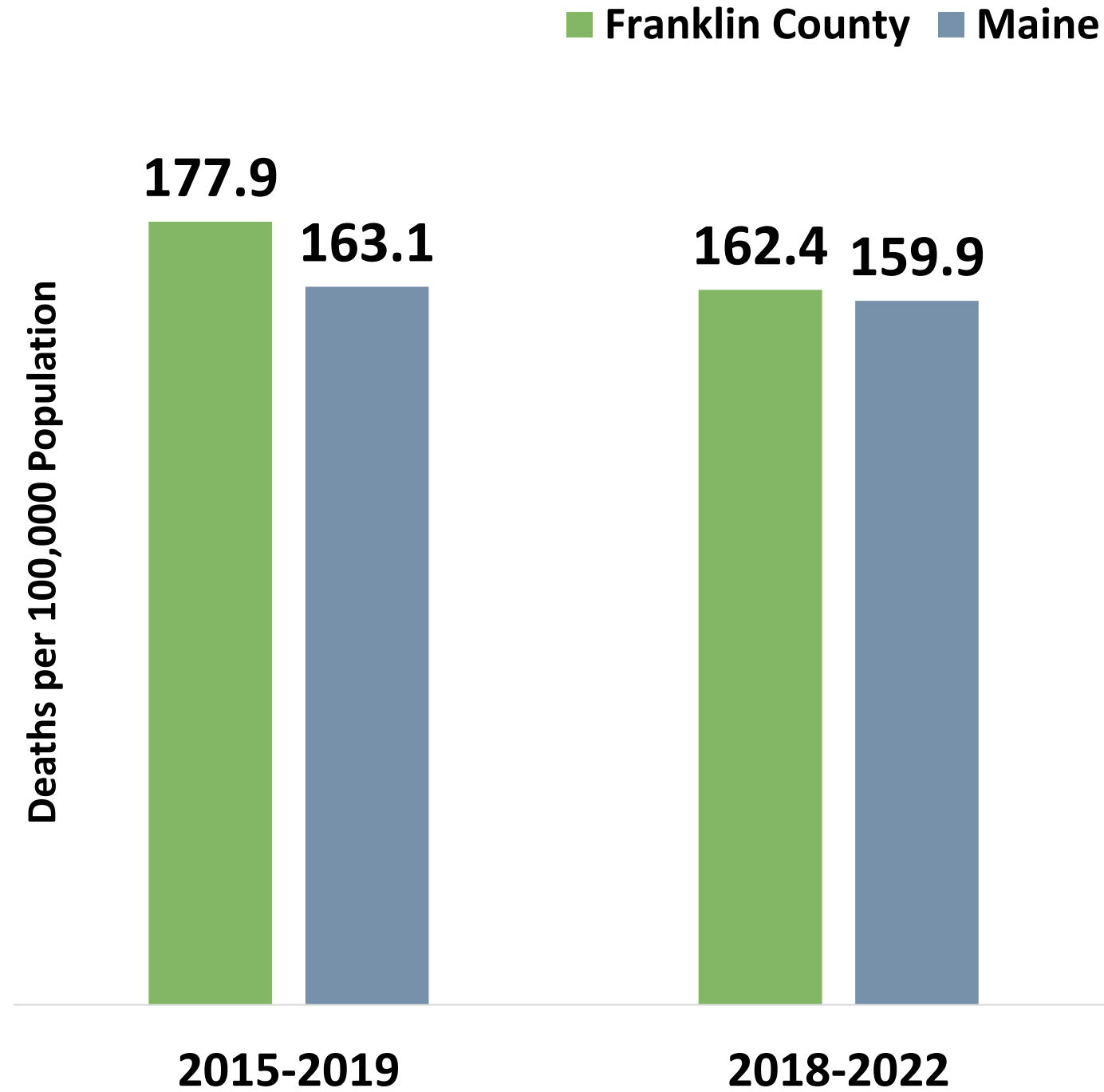
2018-2022: 162.4

**Drug overdose deaths are included in unintentional injury deaths for ranking causes of death.*

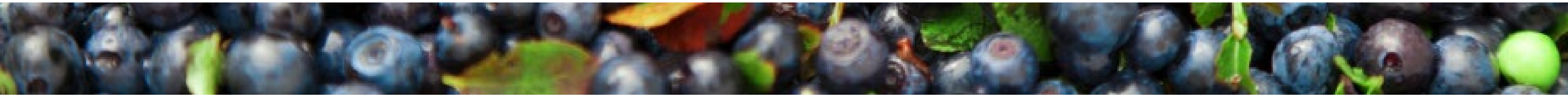
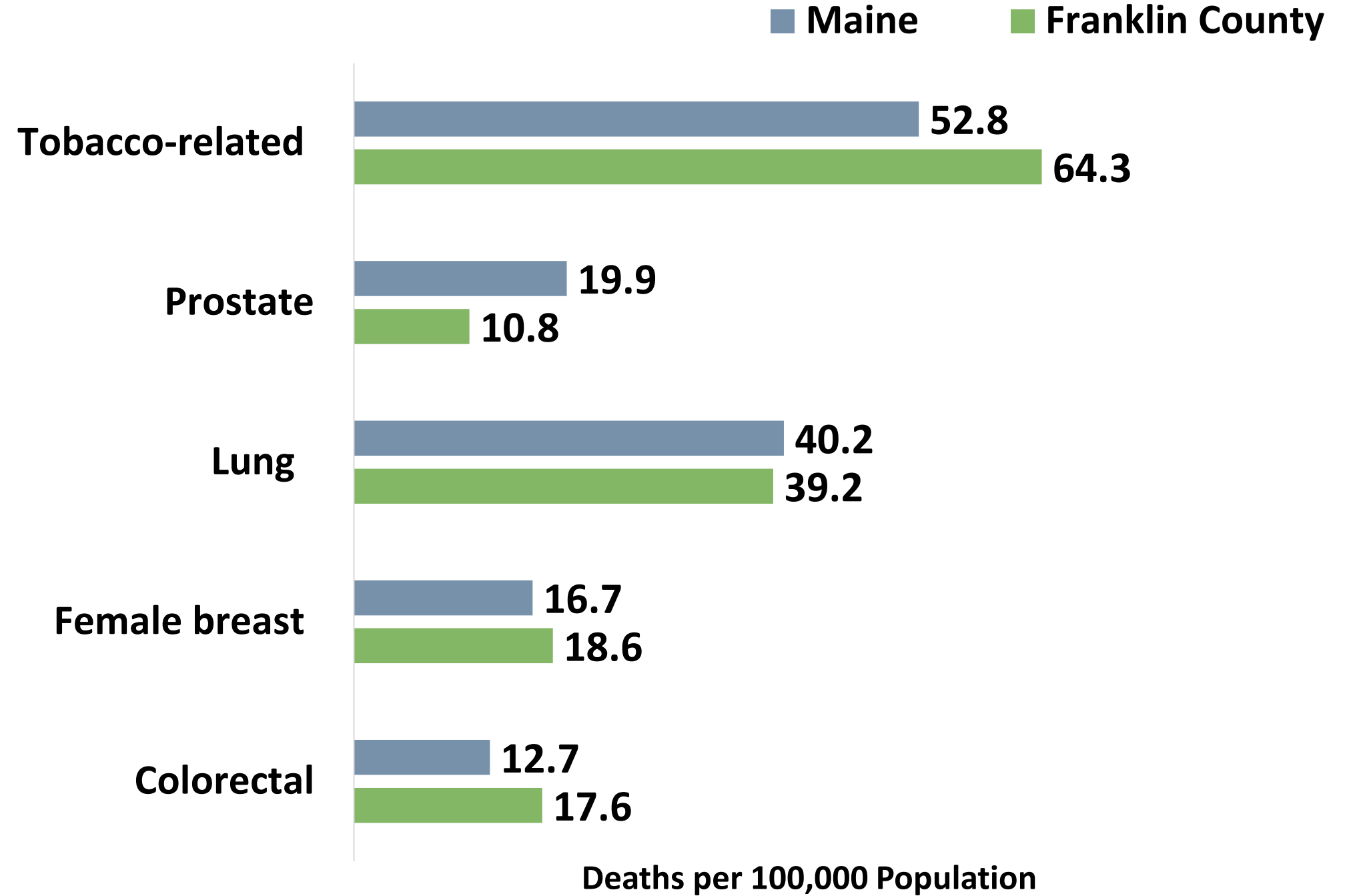


Health Conditions & Outcomes

All Cancer Deaths



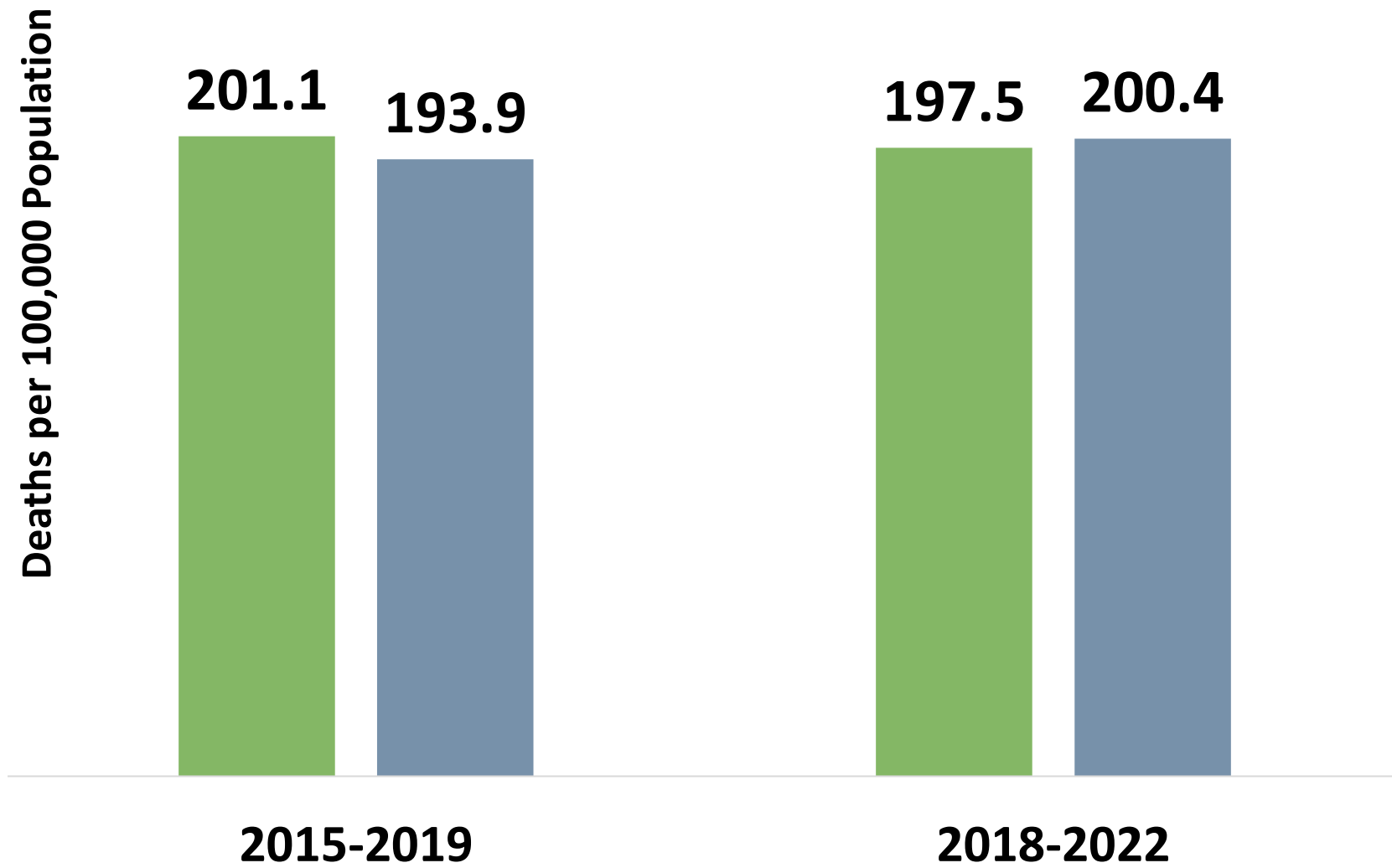
Cancer Mortality by Type



Health Conditions & Outcomes

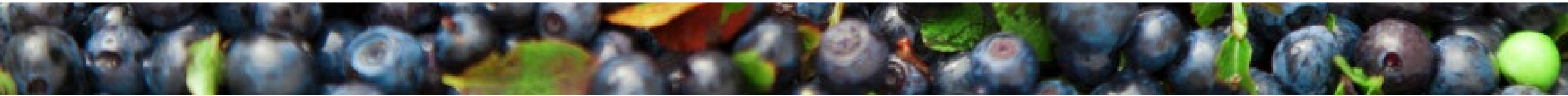
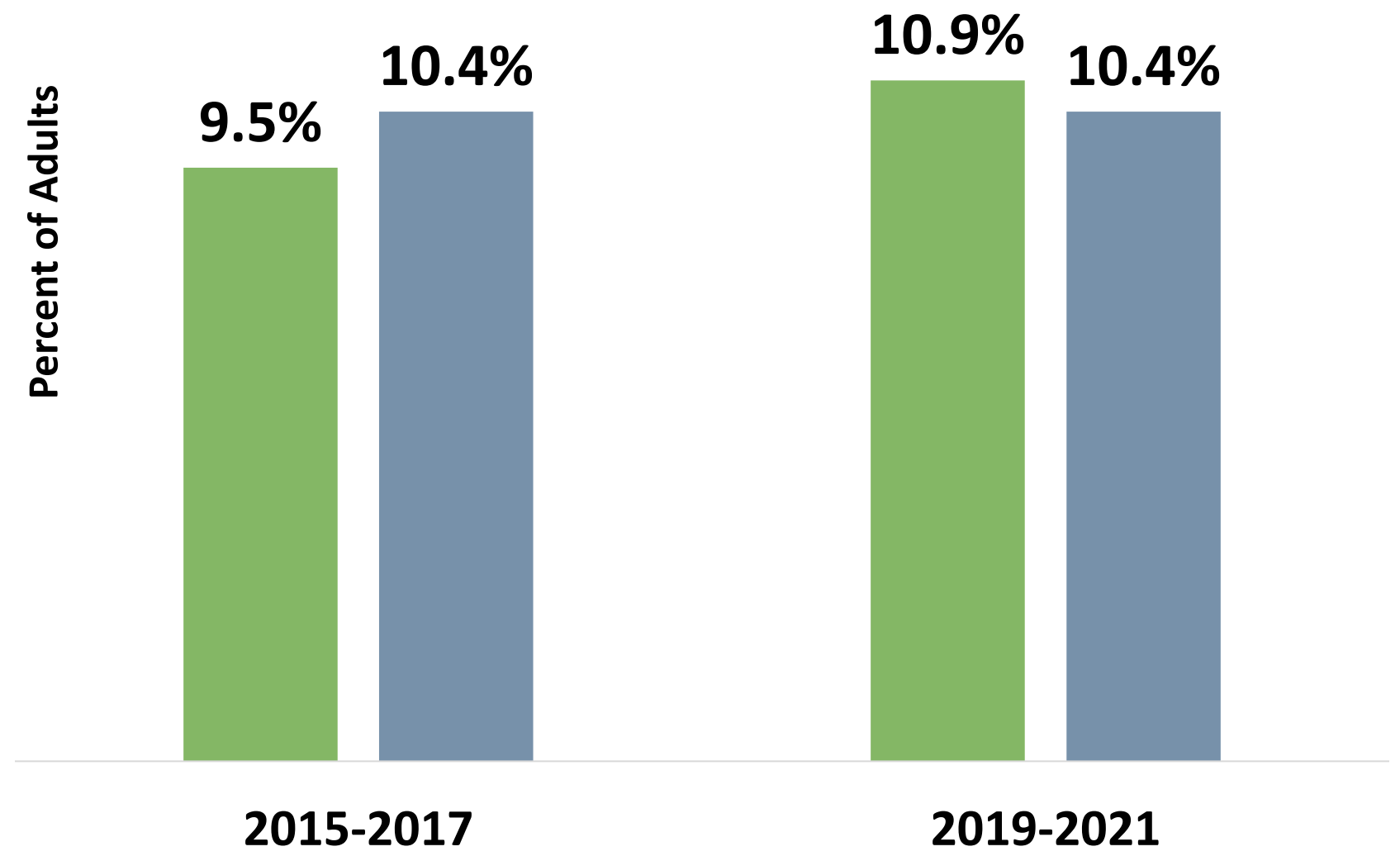
Cardiovascular Disease Deaths

■ Franklin County ■ Maine



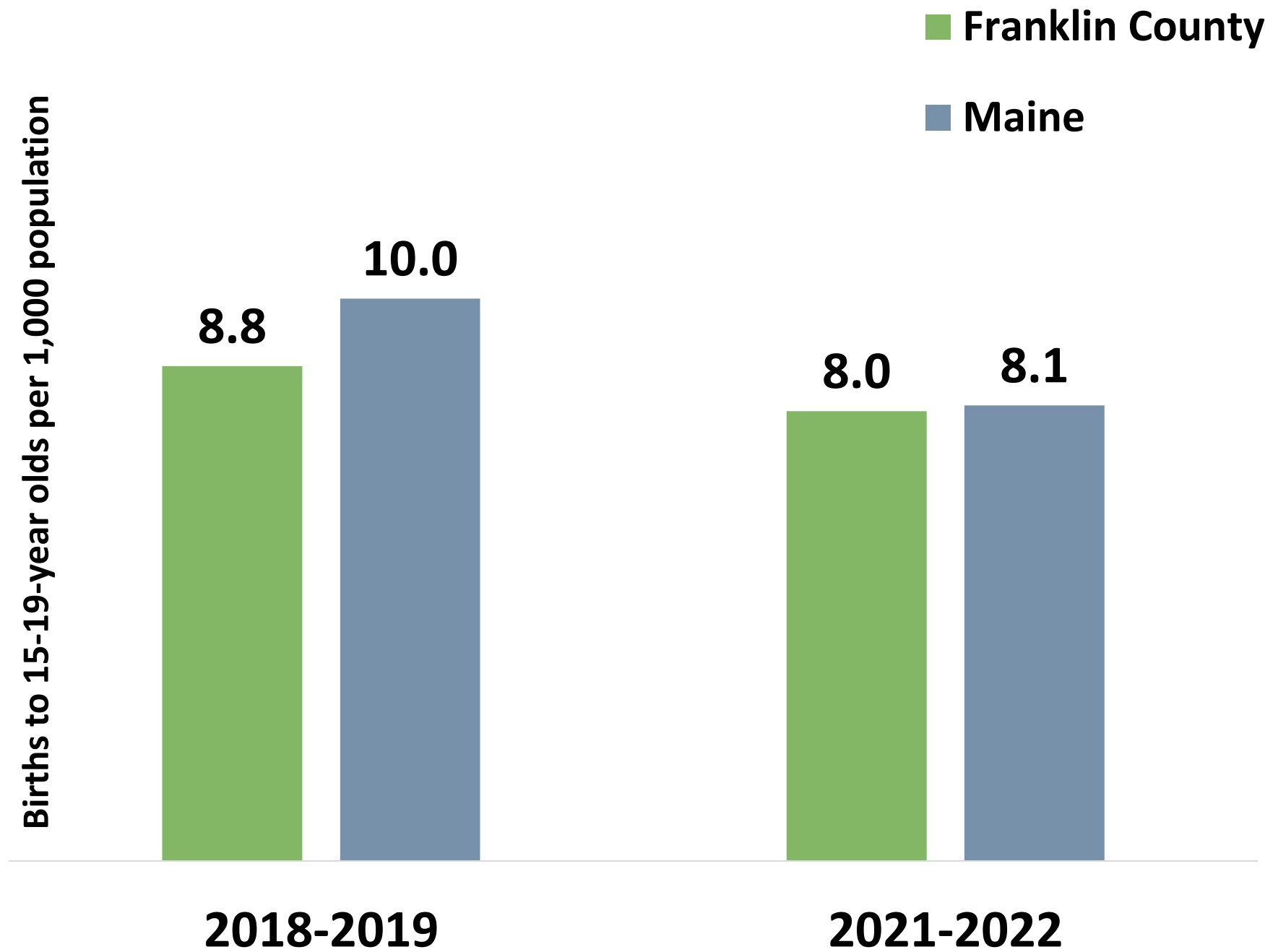
Diabetes

■ Franklin County ■ Maine

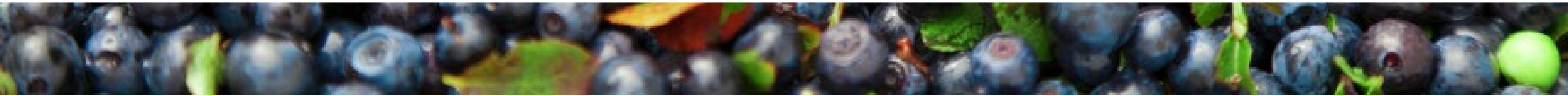
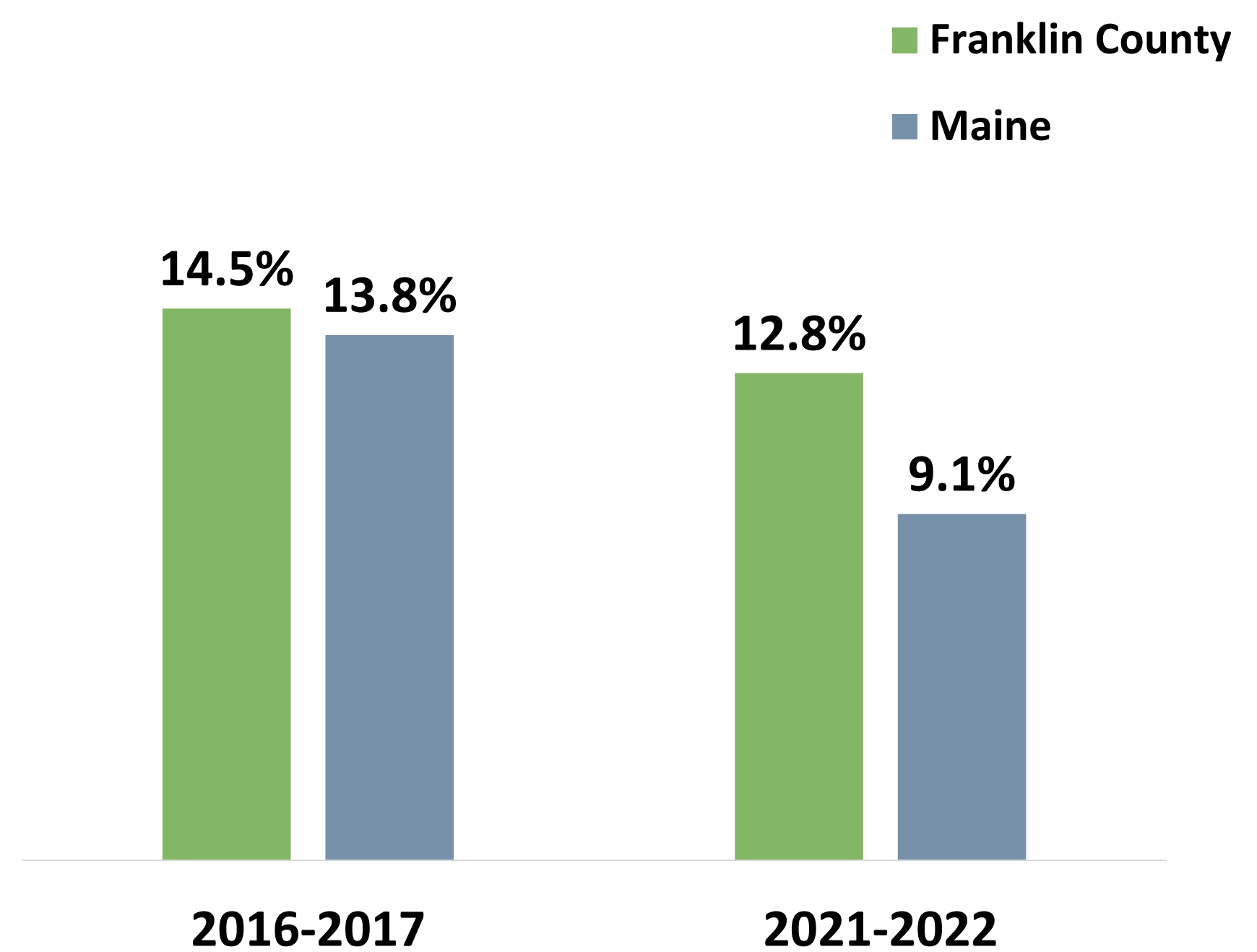


Health Conditions & Outcomes

Teen Births



Smoked During Pregnancy





Community Engagement

Community Engagement

Focus Group Top Themes

Affordable housing

Dental

**Emergency & transitional
housing**

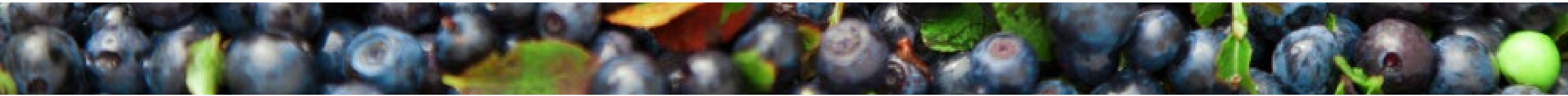
**Limited health care access in
rural communities**

**Mental health services,
especially crisis services**

**Substance use services, including
detox**

Select Quotes From Participants

- “A lot of rural communities have no health centers. Only nurse practitioners. I can come to Farmington to see a doctor, but there are long wait lists.”
- “Most of the time [with the crisis team] you’re on a tablet talking to a crisis worker. There aren’t a lot of psych wards around anymore. I had been stuck in the annex for three days. I ended up taking a five-hour trip to Fort Kent [for care].”
- “MaineCare has decided they will cover more dental if you can find a dentist who takes it.”
- “Homeless shelters are a need. There used to be one, but it shut down during COVID.”
- “I got MaineHousing while working with a navigator. I was able to go to the top of the list by doing what they wanted me to do. Now, they are putting people in hotels because the waiting lists are so long.”



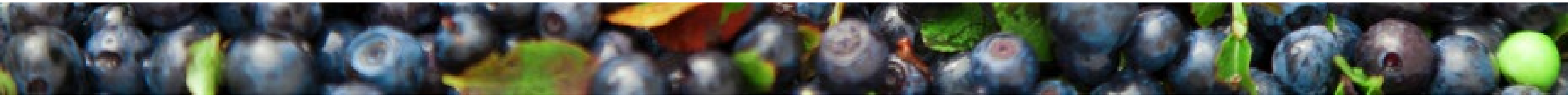
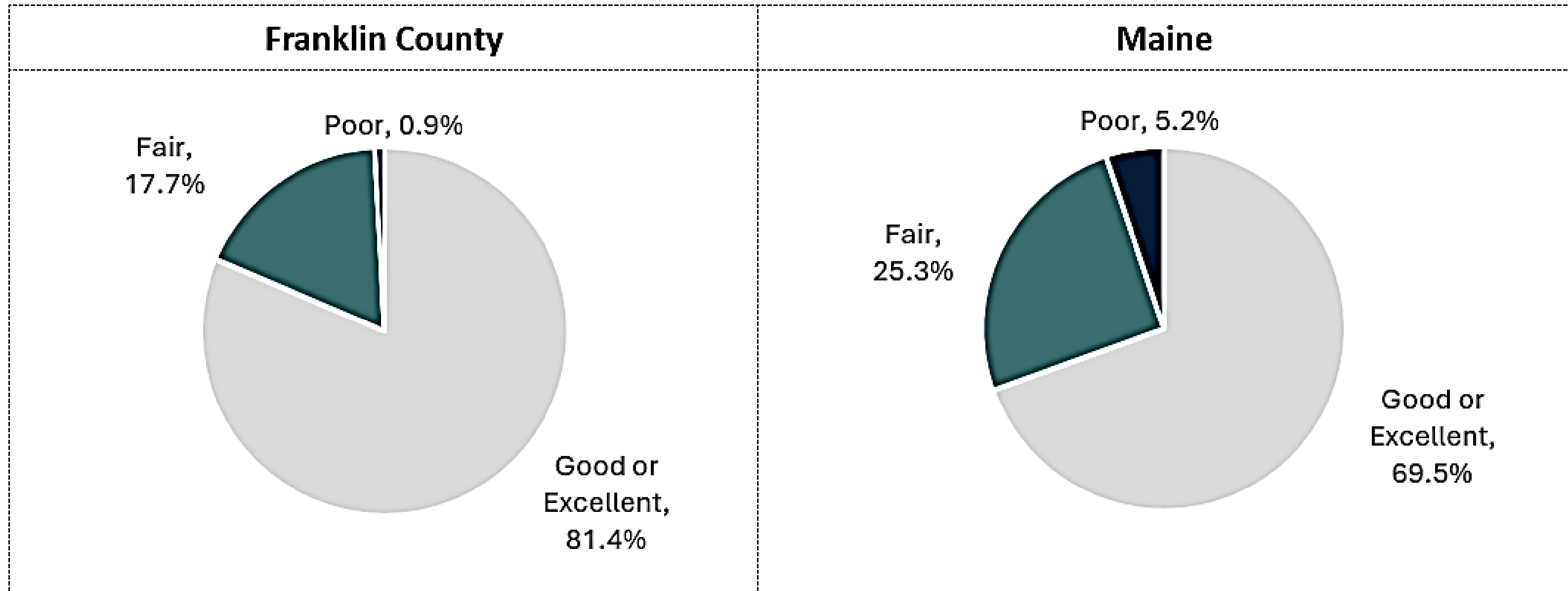
Community Engagement

Total Participants

114

Community Survey: Physical Health Status

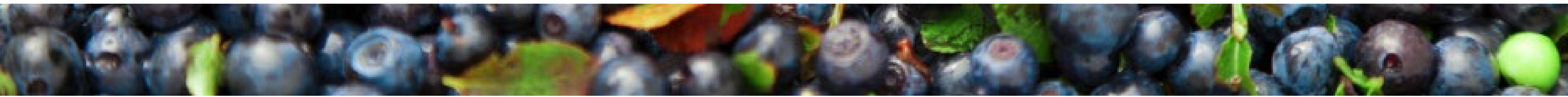
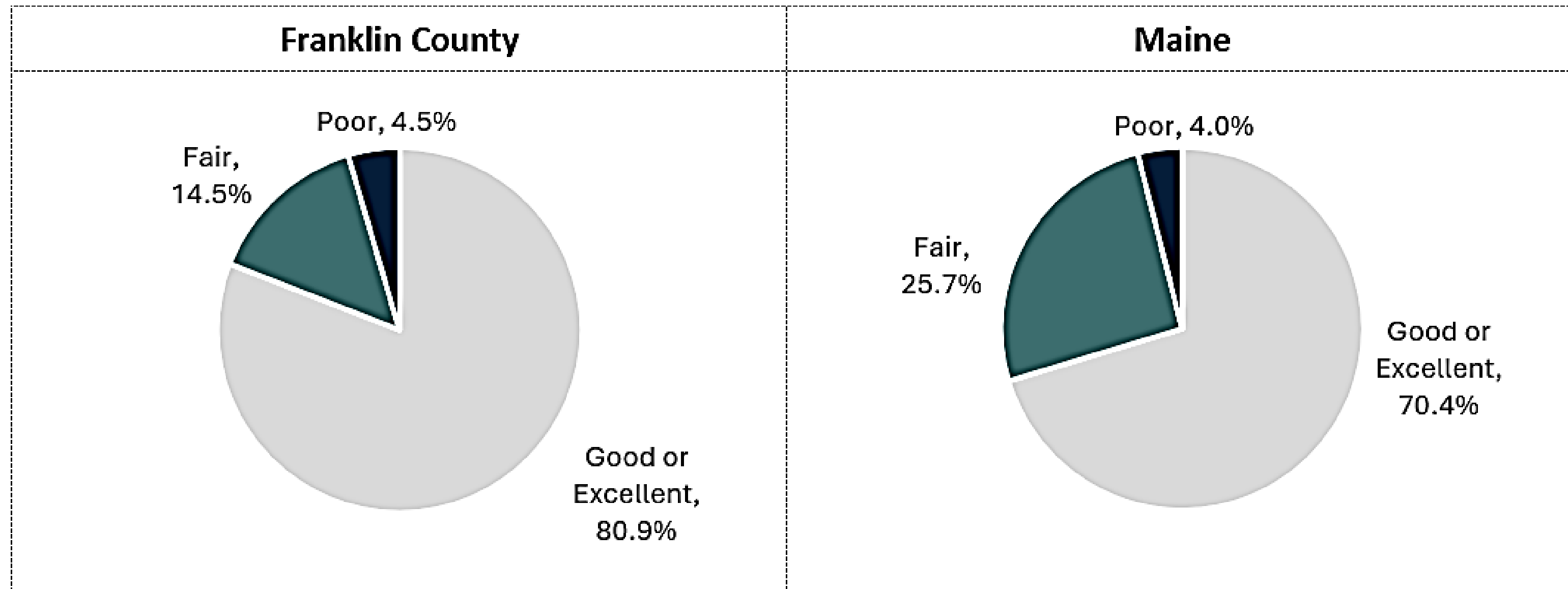
How would you rate your own physical health?



Community Engagement

Community Survey: Mental Health Status

How would you rate your own mental health?

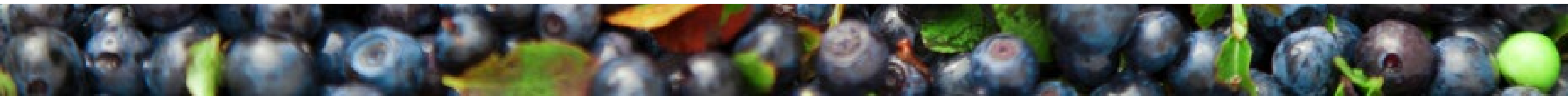


Community Engagement

Community Survey: Community Health Status

Top 5 social concerns that negatively impact your community

Franklin County		Maine	
1)	Mental health issues (anxiety, depression, suicide, etc.)	1)	Mental health issues (anxiety, depression, suicide, etc.)
2)	Substance use (alcohol, cannabis, prescription drugs, illicit drugs, etc.)	2)	Substance use (alcohol, cannabis, prescription drugs, illicit drugs, etc.)
3)	Low incomes and poverty	3)	Low incomes and poverty
4)	Housing insecurity	4)	Housing insecurity
5)	Childcare	5)	Obesity



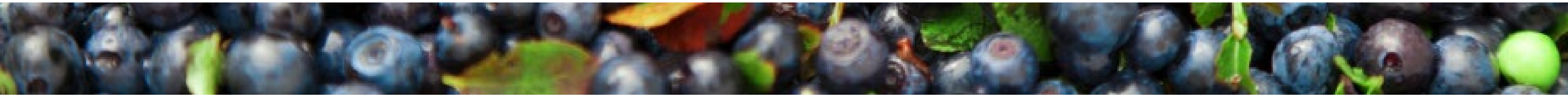
Community Engagement

Community Survey: Community Health Needs

Please indicate if _____ negatively impacts you, a loved one, and/or the community where you live.

Percentage of respondents who answered 'Impacts me, a loved one, and/or my community'

Franklin County		Maine	
Economic needs	78.2%	Economic needs	76.1%
Chronic health conditions (cancer, high blood pressure, heart disease, high cholesterol, etc.)	78.1%	Chronic health conditions (cancer, high blood pressure, heart disease, high cholesterol, etc.)	75.7%
Mental health needs	77.3%	Mental health needs	73.6%
Substance use	74.7%	Substance use	68.5%
Housing needs	74.7%	Housing needs	68.5%
Transportation needs	74.1%	Transportation needs	60.9%
Environmental needs	57.7%	Environmental needs	58.4%
Public safety needs	51.6%	Public safety needs	53.7%



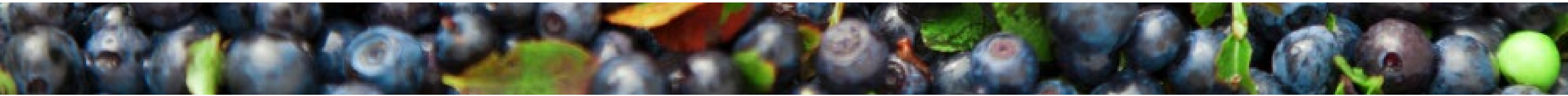


Prioritization Voting Results

Prioritization Voting Results

Survey Results

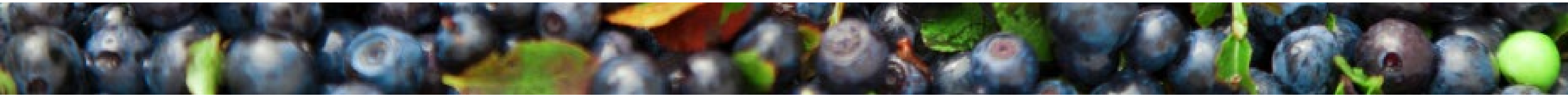
COMMUNITY CONDITIONS	%
Housing (such as housing availability and affordability, costs associated with home ownership or renting, costs of utilities)	85.3%
Poverty (such as individuals and children living in poverty, unemployment, asset poverty, Head Start eligibility, ALICE thresholds)	70.6%
Transportation (such access to transportation, availability of public transportation, transportation that meets a variety of specific needs)	67.6%
Food (such as access to food, quality of food, food costs, culturally competent food options, etc.)	41.2%
Provider Availability (such as availability of primary care physicians, dentists, psychiatrists, and mental health providers, access to mental health treatment, access to drug and alcohol treatment, caregiving, and prenatal care)	35.3%



Prioritization Voting Results

Survey Results

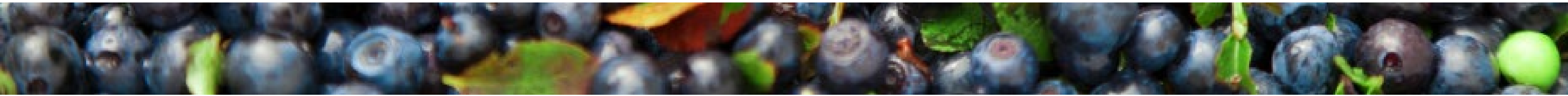
PROTECTIVE & RISK FACTORS	%
Alcohol Use (including binge drinking)	47.1%
Adverse Childhood Experiences	44.1%
Nutrition (such as fruit and vegetable consumption, soda/sports drink consumption)	44.1%
Physical Activity (such as met aerobic guidelines, screen time, sedentary lifestyle)	44.1%
Illicit Drug Use	41.2%



Prioritization Voting Results

Survey Results

HEALTH CONDITIONS & OUTCOMES	%
Mental Health (such as depression, anxiety, sad/hopeless, suicide, depression during pregnancy, post-partum depression)	88.2%
Substance Use Related Injury & Death (such as drug affected infant reports, overdose, opiate poisoning)	64.7%
Obesity/Weight Status	55.9%
Cardiovascular Disease (such as high blood pressure, high cholesterol, heart attack, stroke)	52.9%
Cancer	50.0%





Voting Tool

Based on the presentation, discussions in your breakout, materials, and your knowledge, expertise, and experiences, please vote for the top THREE health and well-being priorities for each of the topic areas:

community conditions, protective & risk factors, and health conditions & outcomes as they relate to your County.



Results



Community Conditions

1. Housing (80.4%)
2. Poverty (78.3%)
3. Transportation (52.2%)

Protective & Risk Factors

1. Alcohol Use (80.4%)
2. Adverse Childhood Experiences (78.3%)
3. Illicit Drug Use (65.2%)

Health Conditions & Outcomes

1. Mental Health (97.8%)
2. Substance Use Related Injury & Death (80.4%)
3. Cancer (47.8%)

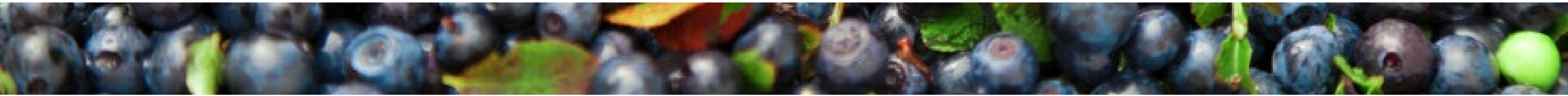


Breakout Discussions

Breakout Discussion #1

Please discuss the results of the community needs assessment and the results of the first round of priority voting:

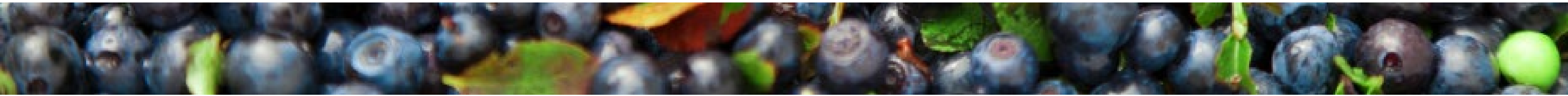
- **Was anything surprising or new?**
- **Did the findings confirm anything for you?**
- **Are any priorities missing from the initial round of voting that should be included in a second round of voting?**



Breakout Discussion #2

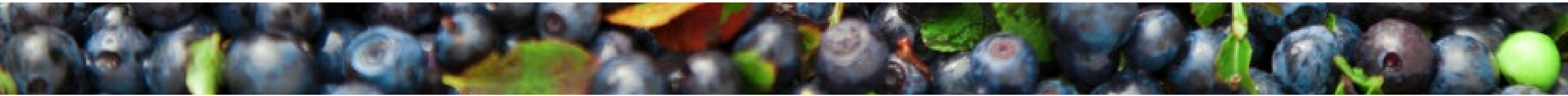
Please discuss the following questions as they relate to the priorities in your topic area:

- **What do you see as the root causes and/or contributing factors to these priorities?**
- **Which sectors are working on these priorities? Where is there potential for collaboration?**



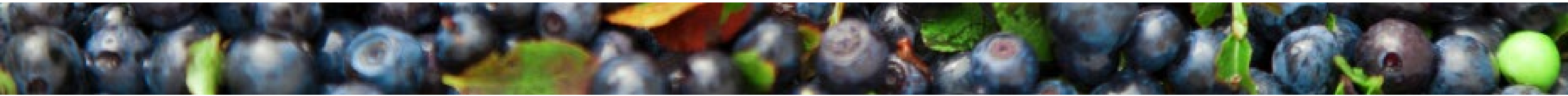
Breakout Discussion #3

Review the responses from the group prior to you. As a group, add comments and additional information and suggest edits, as applicable.



Breakout Discussion #4

Review the responses from the group prior to you. As a group, add comments and additional information and suggest edits, as applicable.





Next Steps

Next Steps

- **County reports will be drafted summarizing the data analysis, community engagement findings, and Forum discussions related to each County's final priorities.**
- **The Steering Committee will review and compile the priorities from each County to inform the final priorities for the State.**
- **Final reports will be released in March 2025.**

