

LogTag Recorders



Quick Start Guide TRED30-16R

ACCESSORIES

Interface Cradles



LTI-HID



LTI-WiFi

Wallmounts and Protective Enclosure



Wallmount Bracket



Wallmount WiFi

External Probes and Glycol Buffer



ST100K
Ø 3.2 mm



ST100H
Ø 5 mm



ST100S
Ø 5 mm



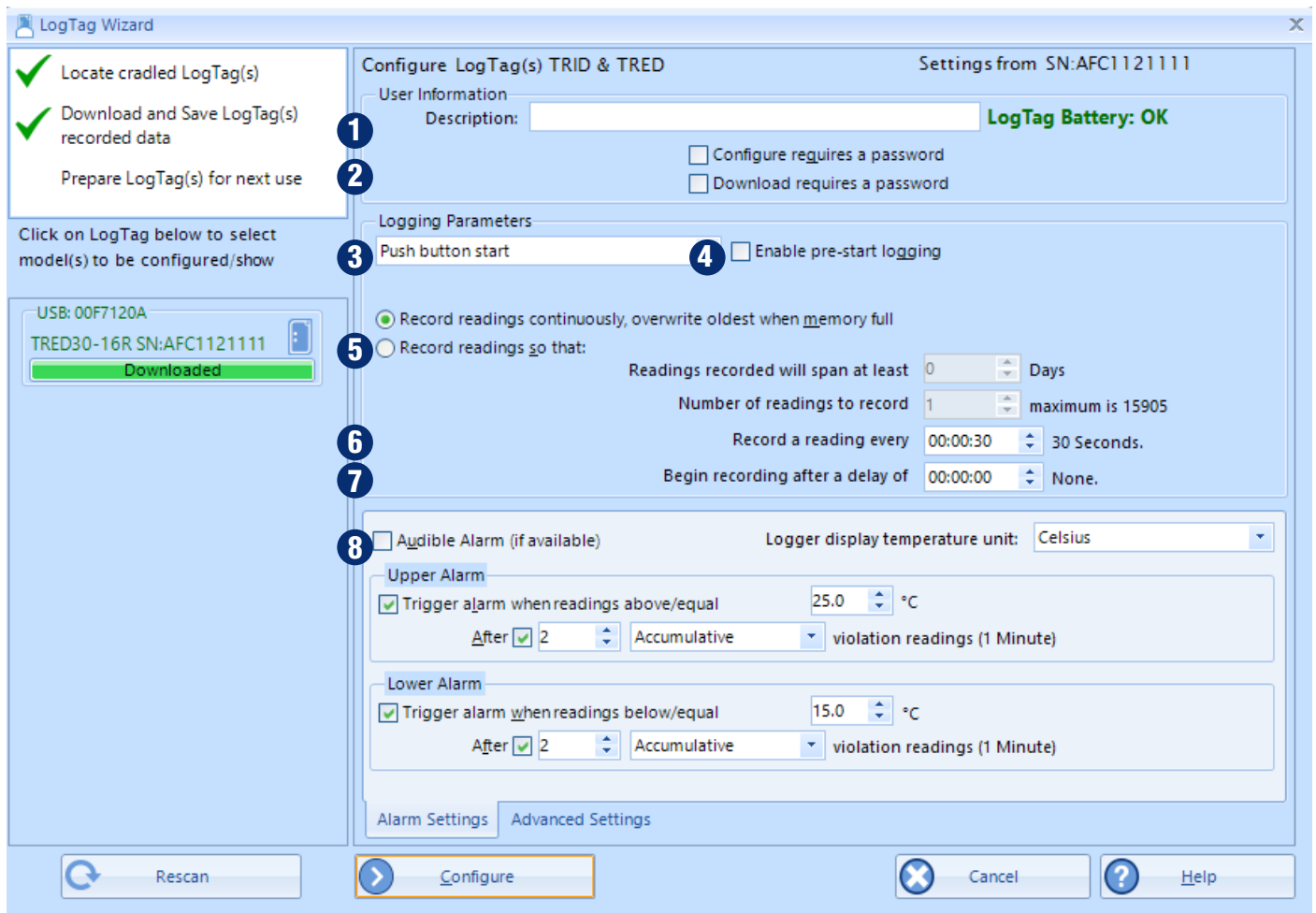
Glycol Buffer

1. SETUP AND CONFIGURATION

Download and install LogTag Analyzer from our website:
www.logtagrecorders.com/software

Connect the Interface Cradle to your computer and insert the Logger into the Interface Cradle with the label to the front. You will hear a click as the contacts engage.

Start LogTag Analyzer. In order to start using your Logger, you need to configure it via the 'LogTag Wizard'. This can be accessed by pressing 'F2' on your keyboard or by clicking the 'Wizard' icon.



- 1. Description:** Enter details to identify your Logger. E.g. refrigerator 3. Also the status of your battery is indicated here.
- 2. Password:** You have the option to specify a password, which needs to be entered the next time someone configures the Logger or when the results will be downloaded.
- 3. Push button start or date/time start:** You can start your Logger by pushing the start button or automate the start by selecting a date/time when the Logger should start recording.
- 4. Enable pre-start logging:** When you select this option the Logger will start recording immediately after configuration. This is useful in case the user forgets to start the Logger.
- 5. Record readings so that...:** Specify how long you wish to record for.

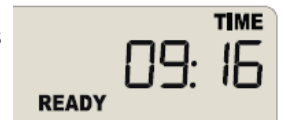
6. **Record a reading every...:** Choose the duration between each reading.
7. **Begin recording after a delay of:** Enter a start delay if required. A start delay commences upon pressing the start button. This allows the Logger to reach the right temperature before recording starts. This option wont be available with a date/time start.
8. **Setting upper / lower alarm:** Specify the upper temperature alarm and/or the lower temperature alarm if you would like to trigger an alarm.

Optional; enable the audible alarm to alert nearby staff when an alarm has been triggered and an option to set the temperature unit.



2. STARTING THE LOGGER

If the Logger has been configured with a Date/Time start, it will start automatically at the configured time. For the push-button start, when the display shows **'READY'**, press and hold the **'START/CLEAR/STOP'** button.



Continue to hold while **'STARTING'** flashes on the display and release the button when the flashing stops. The Logger will now display the delayed start time remaining (if configured). This example shows a start delay of 30 minutes remaining.



At the end of the delayed start (if configured) the Logger will start recording and show the symbol **'REC'** on the display.



Paused function:

If enabled, any button activity will suspend recording and the Logger will display **'PAUSED'**. This allows the user to review the statistics or clear an alarm without causing an invalid recording, alarm or statistic.



Note: Have you forgotten to press the start button? A pre-start recording feature can be activated, to make sure the Logger will monitor the temperature even before the trip has started. No alarms are processed during pre-start logging.

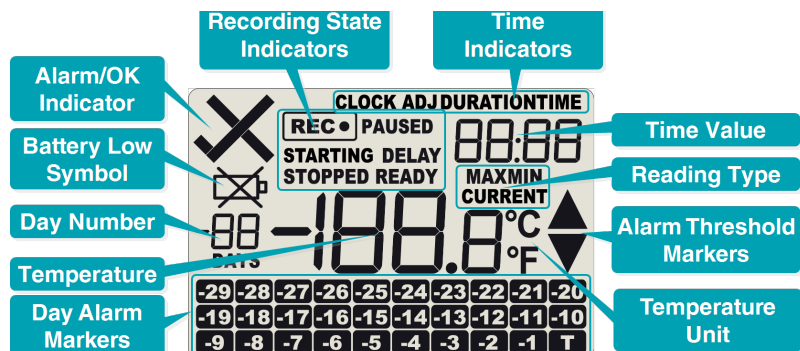


3. DOWNLOAD / RESULTS

1. Open LogTag Analyzer.
2. Insert the Logger into the cradle.
3. After a few seconds, the downloaded data will appear. Data can be displayed in Chart-, Data-, Summary- or Day Summary formats by clicking the tabs at the bottom of the chart dialog. Data can also be saved in a number of formats including TXT, PDF, HTML and CSV for import.

4. ADDITIONAL INFORMATION

Display overview



Recording display

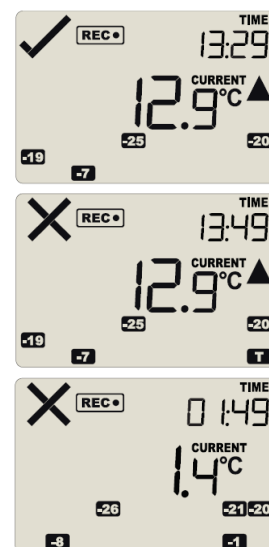
During recording, the display shows the temperature of the last reading taken, the current time, battery status, a combination of alarm status and history. A reading is taken and the display updated every logging interval, as configured in LogTag Analyzer.

Following are some examples:

In this example the display shows that alarm events occurred 7, 19, 20 and 25 days ago. The current temperature is over the upper limit (indicated by the **arrow pointing up**) but has not been over for long enough to trigger an alarm.

20 minutes later the over temperature has triggered an alarm. The 'X' symbol and the 'T' marker day alarm are shown.

The next day, the temperature has returned to the acceptable range but the alarm remains present. The day summary has shifted by 1 day as the time has gone through midnight.



Clearing an alarm

When an alarm event has occurred, the 'X' symbol is displayed.

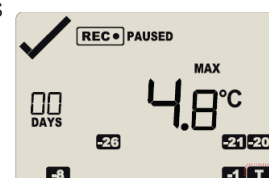
To clear the 'X' symbol from the display, press and hold the 'START/CLEAR/STOP' button until the 'X' symbol stops flashing, then immediately release. Alarm events continue to be displayed in the history area of the display and can be reviewed in the day statistics.

The option to clear and latch alarms can be disabled during configuration, see advanced options in LogTag Analyzer.

Reviewing day statistics

The Logger will display up to 30 days of max/min/duration and alarm statistics. If the Logger is configured to record longer than 30 days (or continuously) then the day statistics will contain up to the latest 30 days.

To review the day statistics, press the 'REVIEW/MARK' button. Each press of the button will step through the Max and Min temperatures for each day starting with today and moving backwards through the days (displayed day will flash). Any button activity during recording will place an inspection mark in the next reading of logged data which will be displayed when the data is downloaded.



Following are some examples:

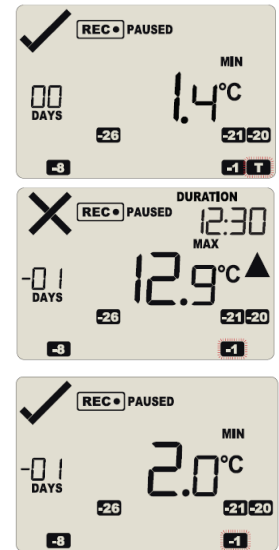
Pressing the **'REVIEW/MARK'** button displays current days **'MAX'** statistic. The **'TODAY'** segment flashes and **'DAY 00'** is shown to indicate the 'Today' selection.

The selected day (today) does not have any recordings outside the pre-set limits.

Pressing the **'REVIEW/MARK'** button again displays the days **'MIN'** statistic. The **'MIN'** statistic is not below the limit and did not trigger an alarm.

Pressing the **'REVIEW/MARK'** button again displays the next previous days **'MAX'** statistic. There are recordings that are above the upper limit. The **'MAX'** statistic is above the upper limit (indicated by the arrow pointing up) and the **'ALARM'** was triggered for a duration of 12 hours and 30 minutes.

Pressing the **'REVIEW/MARK'** button again displays the days **'MIN'** statistic. The **'MIN'** statistic is not below the limit and did not trigger an alarm.



If less than 30 days of recordings have been collected, the day marker only advances as far as there is data available. After the last day for which statistics have been collected is displayed, the next press of the 'start button' rolls the summary back to the statistic for **'TODAY'**. Pressing the **'START/CLEAR/STOP'** button at any time shows the normal recording display again.

Stopping the Logger

If enabled, you can stop the Logger; press and hold the **'START/CLEAR/STOP'** button. Continue to hold while **'STOPPED'** flashes on the display; release the button when the flashing stops. The Logger will no longer take any readings, however you can still review the day statistics and download the logged results to a PC with LogTag Analyzer.

The option to stop the Logger can be disabled during configuration, see advanced options in LogTag Analyzer.

Re-activating the Logger

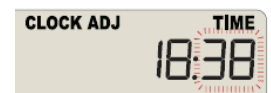
If enabled, the Logger can be re-activated for re-use by either re-configuring using LogTag Analyzer or by using the following procedure; press the **'START/CLEAR/STOP'** button. The **'READY'** text will start flashing on the display. Release the button when the flashing stops. The Logger will then be ready for a push button start. Date/time start is only possible by re-configuring with LogTag Analyzer. Be aware that re-activating the Logger will erase all previously recorded readings and statistics!

The option to re-activate the Logger can be disabled during configuration, see advanced options in LogTag Analyzer.

Setting the display clock

LogTag Analyzer sets the Loggers internal real time clock to the configuration PC's time, however the user can manually change the display clock if required. Press and hold the **'START/CLEAR/STOP'** button and **'REVIEW/MARK'** button together continuously for 8 seconds. During this period the display will flash **'CLOCK ADJ'**.

Release the buttons when the flashing stops to enter 'clock adjust' mode. The minutes will flash. Press the **'START/CLEAR/STOP'** button to put in the minutes and press the **'REVIEW/MARK'** button to accept the minute changes and to start editing the hours.



The hours will now flash. Press the **'REVIEW/MARK'** button to increment the hours and press the **'START/CLEAR/STOP'** to accept and store the new time. If recording is active, a clock change event will be recorded with the next logged reading, which will be displayed in the downloaded data.

BATTERY REPLACEMENT

The battery of your Logger can be replaced. The Loggers use a commonly available battery (CR2032). To safeguard your data we recommend you use a reputable, branded battery. The battery status can be found in the configuration screen. If you would like to know more about the battery life of your Logger, please visit our website / knowledge base.

HIBERNATION

To prolong the life of your Logger you can hibernate your Logger between trips when it is not being used for extended periods. Loggers can be hibernated via LogTag Analyzer by selecting 'Hibernate' from the LogTag menu. When hibernated, all logging functions are suspended, all indicators are turned off and internal components are switched to low power. This reduces the current consumption on Loggers to very low levels.

Check our website for more information about the hibernation setting.

CALIBRATION

In order to calibrate your Logger, you need to use our LogTag Calibrate software. LogTag Recorders releases our LogTag Calibrate software only to selected users who have suitable equipment and credentials relating to standard practices of temperature and/or humidity calibration.

If you require calibration of your Logger(s), please contact your local supplier.

WATER DAMAGE

Please remember that none of the Loggers can be immersed into liquids. For more specific information, check your user guide for the IP rating.

CONTACT CLEANING

Keep the three metal contacts at the back of the Logger clean and free from tape residue, dirt or other contaminants, which could result in communications problems. If required, clean them with a soft pencil eraser, but don't use abrasive materials as you may permanently damage them.