

Detail Area 'D' - Millbridge to Eastport

Disclaimer

Map/Image prepared by the Maine DEP. This map was generated by overlaying DEP SA Waters & Navigable Harbors GIS data onto digital NOAA Nautical Charts. All datasets were the best available to the DEP at the time a map was created and updated information may now exist. These maps are for illustrative purposes only and are not for navigation or for use as a legal reference. SA waters are described in statutory text at 38 M.R.S.A. 469. Map created on November 8th, 2005



Navigable Harbors



Class SA Waters

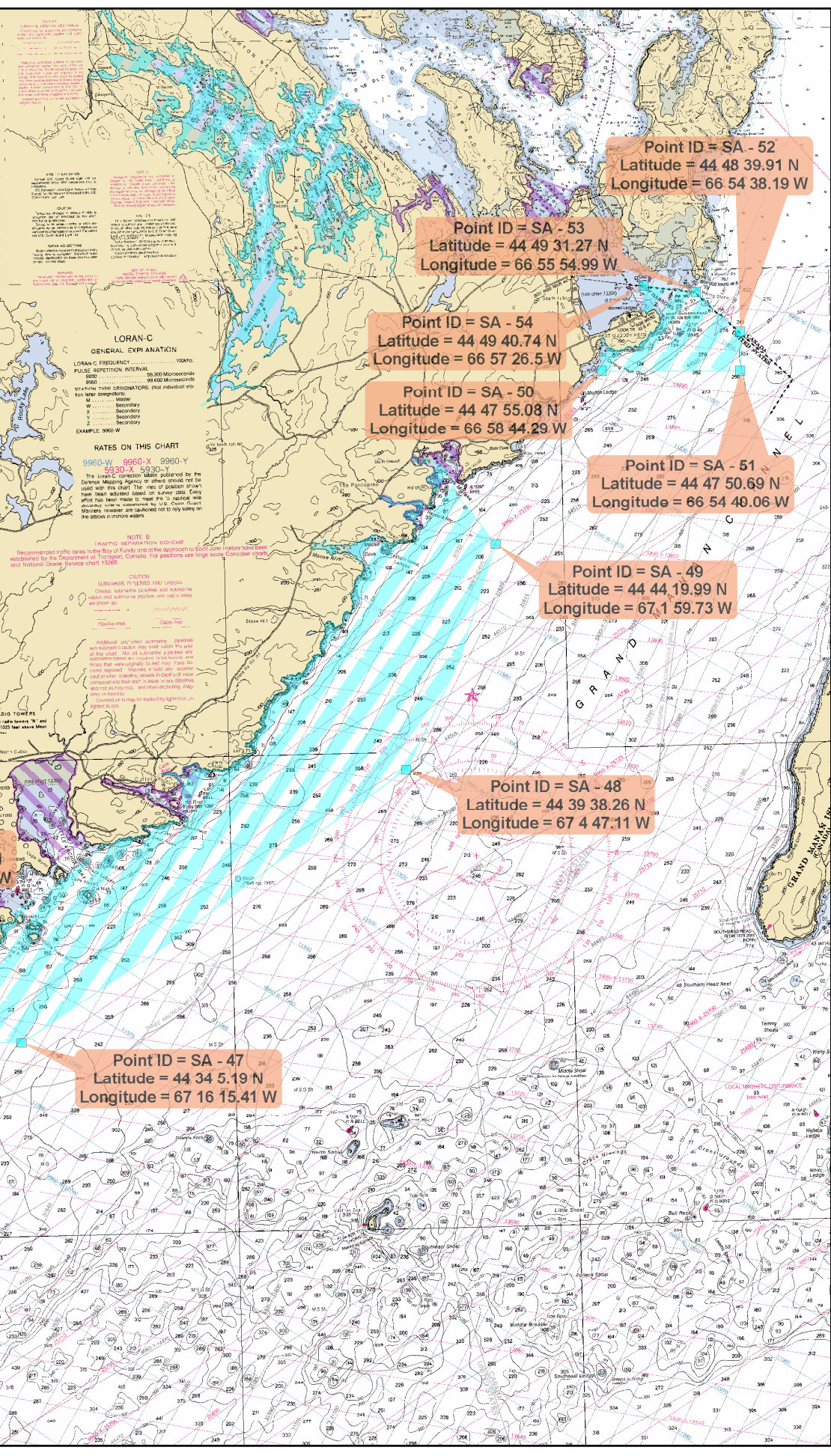
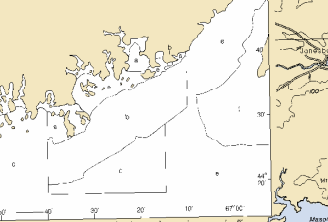


QUODDY NARROWS TO PETIT MANAN ISLAND

Mercator Projection
Scale 1:80,000 at Lat. 44°34'
North American Datum of 1983
(World Geodetic System 1984)
SOUNDINGS IN FEET
AT MEAN LOWER LOW WATER IN U.S. TERRITORY
AT LOWEST NORMAL TIDES IN CANADIAN TERRITORY

Name	DATE	DEPTH	HEIGHT	REMARKS
West Quoddy Head	1879	10.0	10.0	
Millbridge	1879	10.0	10.0	
Little Bay	1879	10.0	10.0	
Little Bay	1879	10.0	10.0	
Little Bay	1879	10.0	10.0	

NAME	DATE	DEPTH	HEIGHT	REMARKS
West Quoddy Head	1879	10.0	10.0	
Millbridge	1879	10.0	10.0	
Little Bay	1879	10.0	10.0	
Little Bay	1879	10.0	10.0	
Little Bay	1879	10.0	10.0	



Point ID = SA - 52
Latitude = 44 48 39.91 N
Longitude = 66 54 38.19 W

Point ID = SA - 53
Latitude = 44 49 31.27 N
Longitude = 66 55 54.99 W

Point ID = SA - 54
Latitude = 44 49 40.74 N
Longitude = 66 57 26.5 W

Point ID = SA - 50
Latitude = 44 47 55.08 N
Longitude = 66 58 44.29 W

Point ID = SA - 51
Latitude = 44 47 50.69 N
Longitude = 66 54 40.06 W

Point ID = SA - 49
Latitude = 44 44 19.99 N
Longitude = 67 1 59.73 W

Point ID = SA - 48
Latitude = 44 39 38.26 N
Longitude = 67 4 47.11 W

Point ID = SA - 45
Latitude = 44 35 50.26 N
Longitude = 67 19 57.92 W

Point ID = SA - 47
Latitude = 44 34 5.19 N
Longitude = 67 16 15.41 W

Point ID = SA - 46
Latitude = 44 34 7.36 N
Longitude = 67 20 12.04 W

Point ID = SA - 44
Latitude = 44 28 57.72 N
Longitude = 67 33 29.76 W

Point ID = SA - 43
Latitude = 44 27 42.37 N
Longitude = 67 32 52.26 W

Point ID = SA - 42
Latitude = 44 26 35.74 N
Longitude = 67 32 54.25 W

Point ID = SA - 40
Latitude = 44 28 2.91 N
Longitude = 67 50 17.15 W

Point ID = SA - 41
Latitude = 44 26 37.83 N
Longitude = 67 35 45.55 W

Point ID = SA - 39
Latitude = 44 27 23.82 N
Longitude = 67 49 36.49 W