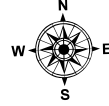
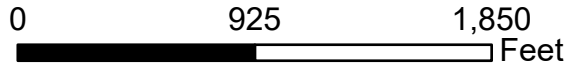


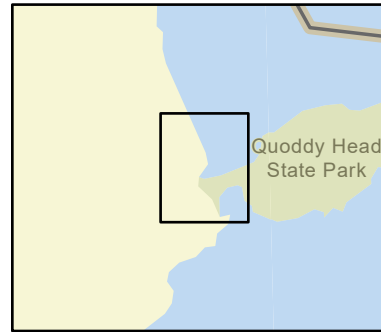
D-23-1

Lubec Flats

Lubec, ME

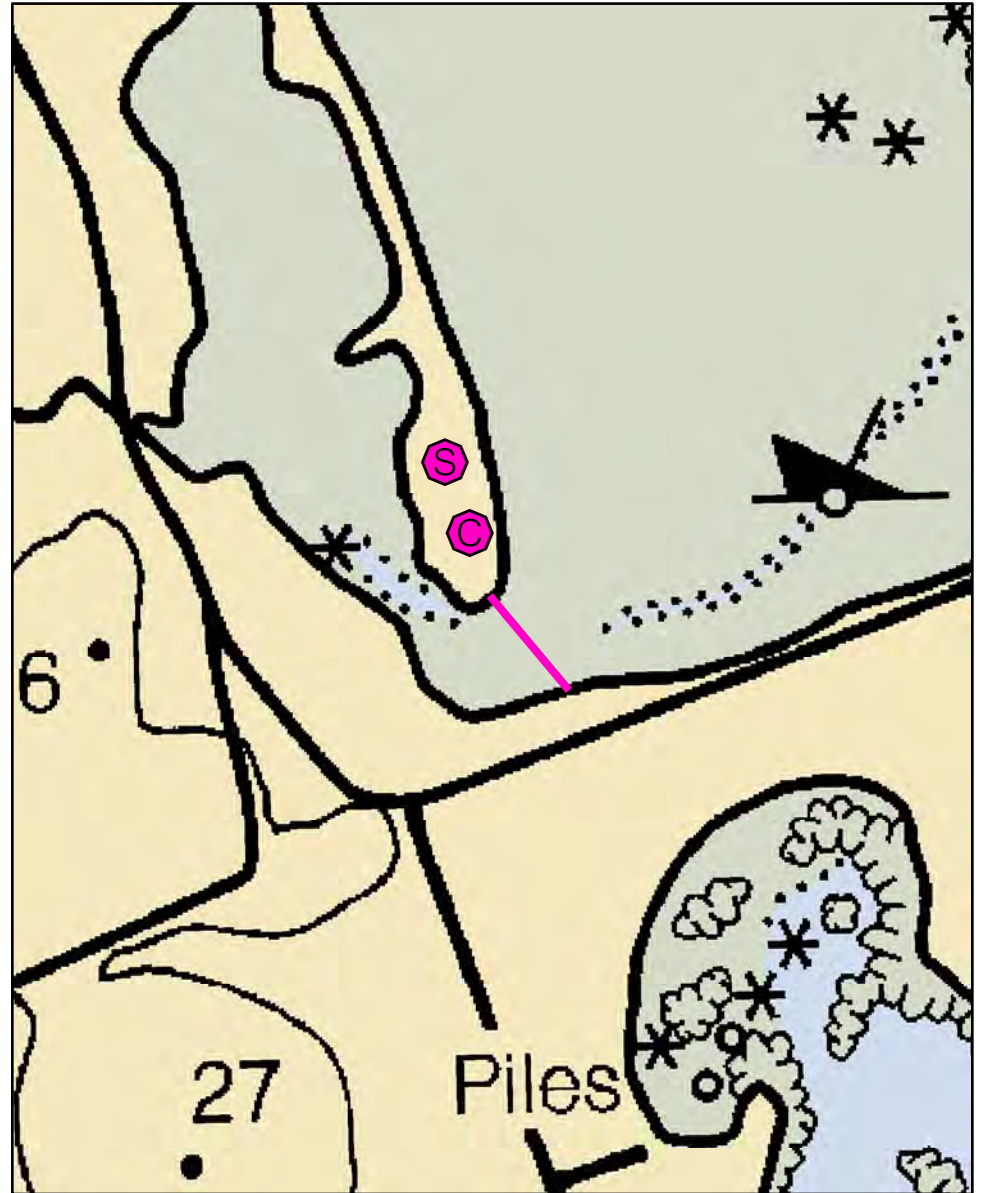


Date printed: 9/10/2022 7:54 PM



Legend

Boat Launches	Staging Area
Collection Point	Water Treatment Intake
Permanent Mooring	Response Vessel
Skimmer	Vacuum Truck



D-23-1 Lubec Flats

Town Lubec

Latitude 44° 48.876' N **Longitude** 66° 58.962' W

Approx. Tidal Range (feet) 19

Max Current (knots) **Flood** Minimal **Ebb**

Source

Port Region Downeast

NOAA Chart # 13394_1

ESI Map # 4A, 4C

EVI Map # 93

DeLorme Map # (2019) 27 B4

Resources At Risk

ESI Primary Shoreline Type Coarse-grained sand beaches (4)

ESI Secondary Shoreline Type Mixed sand and gravel beaches (5)

Environmental Concerns Highly vulnerable shorebird area. Coastal barrier resource area. Eelgrass, shellfish, marine worms

Archaeological Conflicts None noted. Contact MHPC at (207) 287-2132 if archaeological items are discovered.

Strategy Information

Strategy Purpose Divert oil from marsh behind bar

Staging Areas Lubec boat ramp at end of North Water Street, downtown Lubec, or Bar Road on spit at site

Site Access Bar Road at site

Nearest Boat Ramp Lubec boat ramp, North Water Street, downtown Lubec

Collection Points Possibly from Bar Road on site

Special Instructions

Work Assignment Deploy 500 feet of boom across salt marsh entrance in South Lubec.

Recommended Equipment / Resources

Length of Boom (feet) 500

Type of Boom 12" to 18" containment boom

Recommended Equipment (Minimum)
2 - anchor systems (shoreside)
1 - vacuum truck or skimmer and storage
1 - workboat and/ or
2 - laborers and truck

Unless otherwise indicated, the boom length given is the distance measured on the chart. Actual length required may vary with conditions.

Last Desktop Validation: 5/4/2019

Last Field Visit: 6/14/2007

Last Field Test: