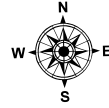
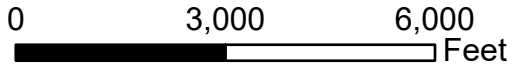
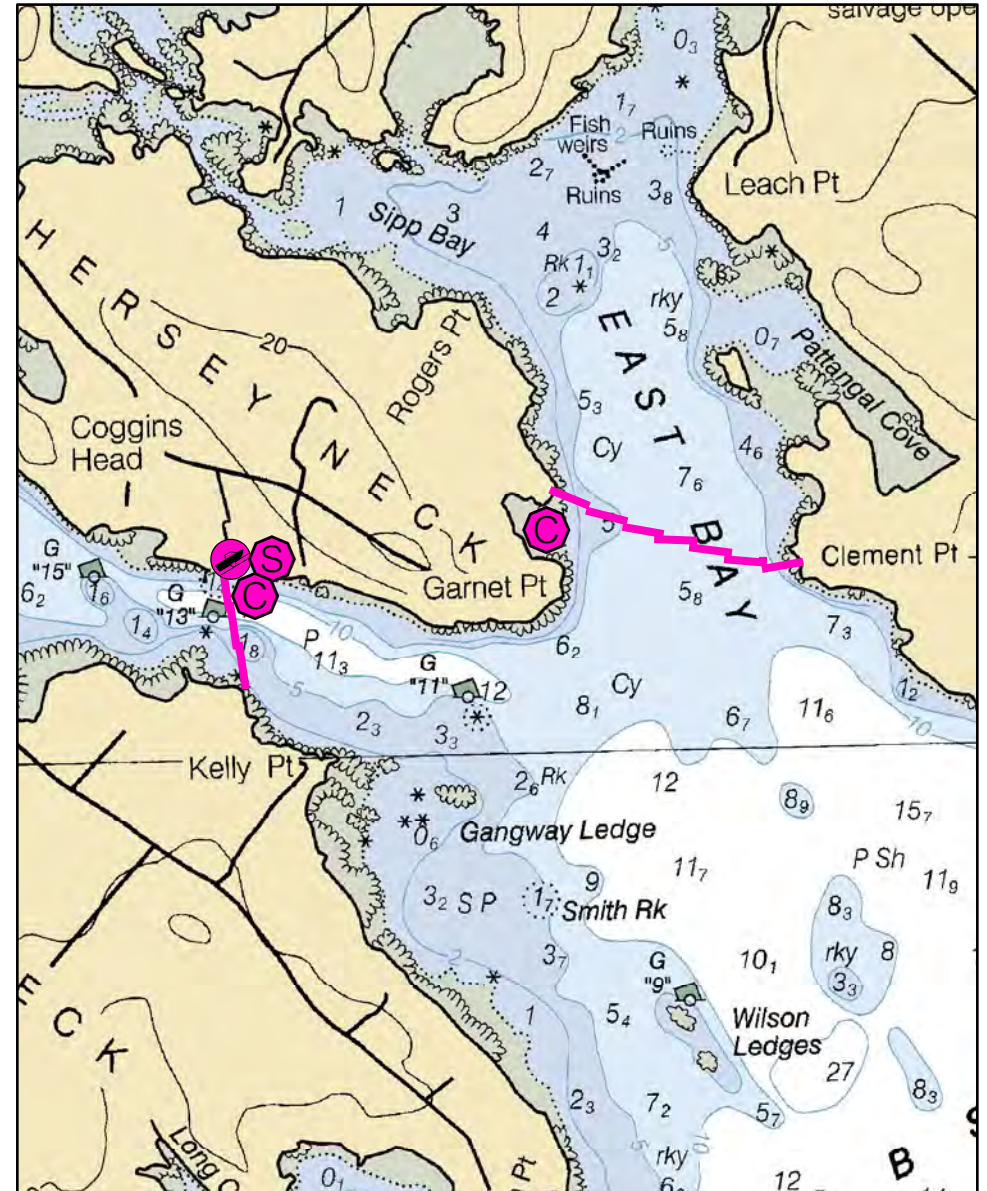
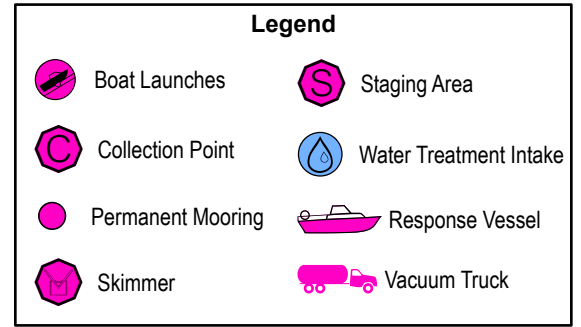
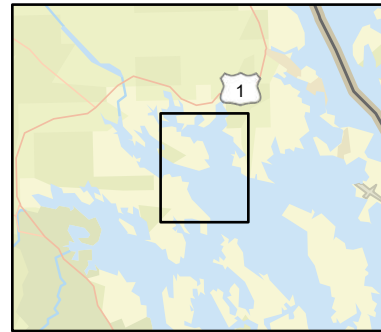


# D-21-1

## Pennamaquan River / Sipp Bay Pembroke / Perry, ME



Date printed: 9/10/2022 7:54 PM



# D-21-1 Pennamaquan River/Sipps Bay

<b>Town</b>	Pembroke / Perry	<b>Port Region</b>	Downeast
<b>Latitude</b>	44° 55.188' N	<b>Longitude</b>	67° 6.618' W
<b>Approx. Tidal Range (feet)</b>	19	<b>NOAA Chart #</b>	13394_1
<b>Max Current (knots)</b>	<b>Flood</b>	<b>ESI Map #</b>	3C, 4B
	<b>Ebb</b>	<b>EVI Map #</b>	95
<b>Source</b>	Estimated	<b>DeLorme Map # (2019)</b>	37 E2

## Resources At Risk

<b>ESI Primary Shoreline Type</b>	Mixed sand and gravel beaches (5)
<b>ESI Secondary Shoreline Type</b>	Exposed wave-cut platforms in bedrock, mud, or clay (2A)

<b>Environmental Concerns</b>	Elver runs, shellfish, shorebirds, eelgrass and bald eagle nesting sites in both upper East Bay and Pennamaquan River. Extensive mudflats.
-------------------------------	--

<b>Archaeological Conflicts</b>	No conflict as designed. Deviations from GRS design will require MHPC review. Contact MHPC at (207) 287-2132.
---------------------------------	---

## Strategy Information

<b>Strategy Purpose</b>	Divert oil from Pennamaquan River and Sipp Bay
<b>Staging Areas</b>	Pembroke town boat launch, Boat Landing Road, Pembroke
<b>Site Access</b>	Pembroke town boat launch, Boat Landing Road, Pembroke
<b>Nearest Boat Ramp</b>	Pembroke town boat launch, Boat Landing Road, Pembroke
<b>Collection Points</b>	Red Cove, Pembroke boat launch
<b>Special Instructions</b>	Current very strong in this area may be difficult for strategy to be effective.
<b>Work Assignment</b>	Deploy three 500 foot sections of boom from boat launch on Hersey Neck to Kelly Pt. Deploy seven 500' sections of boom from Clement Point to Hersey Neck. Direct oil into Red Cove for possible recovery.

## Recommended Equipment / Resources

<b>Length of Boom (feet)</b>	5000	<b>Type of Boom</b>	12" to 18" containment boom
<b>Recommended Equipment (Minimum)</b>	16 - anchor systems: 35 lb. Danforth or equivalent and line for 3:1 scope plus tag lines and buoys. 4 - shoreside connections 1 - vacuum truck 1 - skimmer and storage 2 - 4 workboats with minimum 90 hp 2 - 4 boat operators 4 - 8 laborers		

Unless otherwise indicated, the boom length given is the distance measured on the chart. Actual length required may vary with conditions.

Last Desktop Validation: 5/4/2019

Last Field Visit: 6/14/2007

Last Field Test: