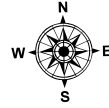


D-20-1

South Bay & Federal Harbor Lubec, ME

0 1,000 2,000
Feet

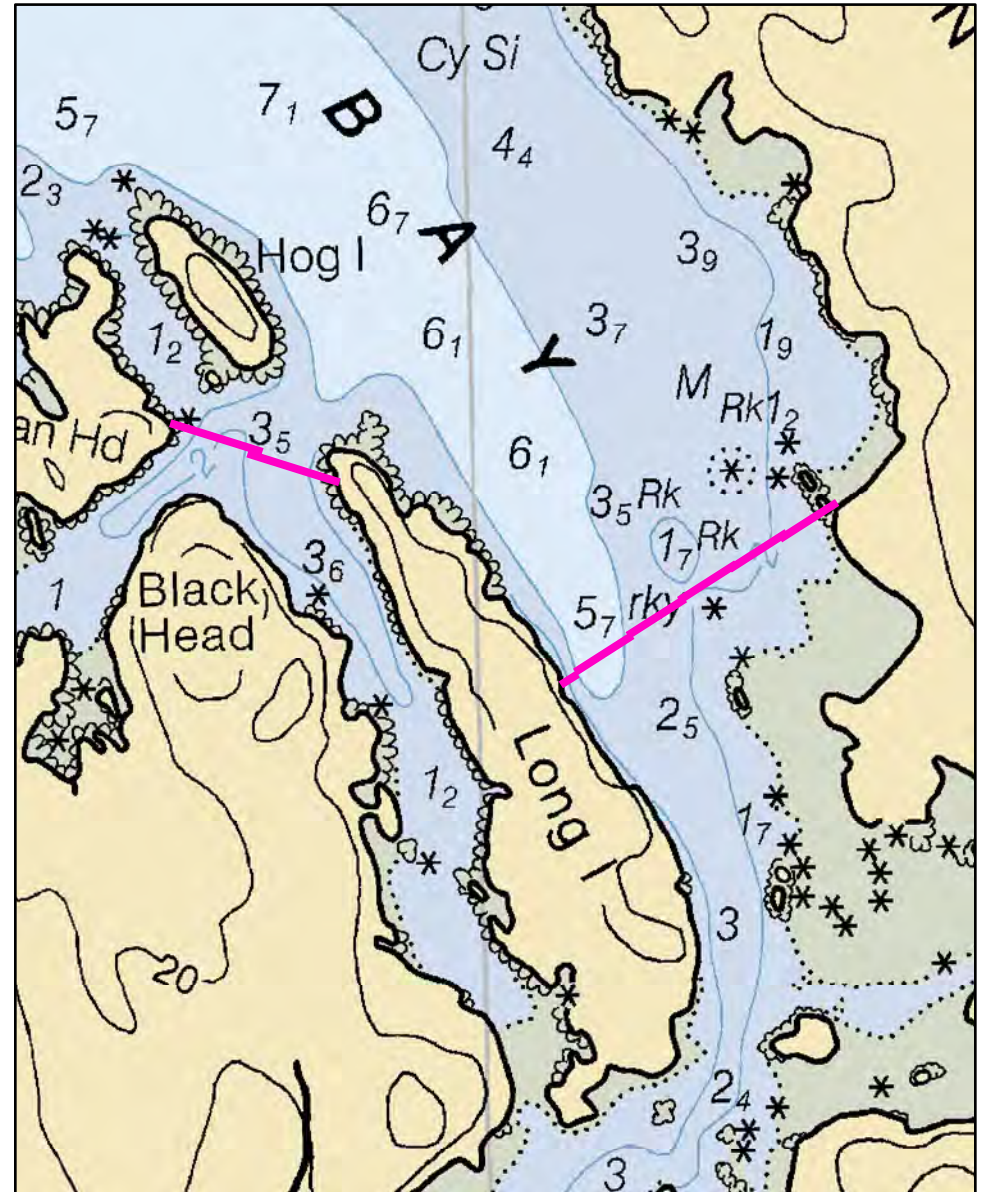


Date printed: 9/10/2022 7:54 PM



Legend

Boat Launches	Staging Area
Collection Point	Water Treatment Intake
Permanent Mooring	Response Vessel
Skimmer	Vacuum Truck



D-20-1 South Bay & Federal Harbor

Town Lubec

Latitude 44° 51.828' N **Longitude** 67° 2.742' W

Approx. Tidal Range (feet) 19

Max Current (knots) Flood Ebb

Source

Port Region Downeast

NOAA Chart # 13394_1

ESI Map # 4B, 4A

EVI Map # 95

DeLorme Map # (2019) 27 A3

Resources At Risk

ESI Primary Shoreline Type Vegetated low banks (9B)

ESI Secondary Shoreline Type Exposed wave-cut platforms in bedrock, mud, or clay (2A)

Environmental Concerns Eelgrass, shellfish beds, diadromous fish and shorebirds in both Federal Bay and South Harbor. Seal haul outs at both outer and inner South Bay. Mudflats and marshes. Bald eagle nesting sites on Horan Head and Long Island.

Archaeological Conflicts None noted. Contact MHPC at (207) 287-2132 if archaeological items are discovered.

Strategy Information

Strategy Purpose Exclude oil from Federal Harbor, Case Cove and Canal Cove

Staging Areas Johnson Bay boat launch, North Water Street, downtown Lubec or Pembroke town boat launch, Boat Landing Road, Pembroke

Site Access Only access is by water from staging areas above

Nearest Boat Ramp Johnson Bay boat launch, North Water Street, downtown Lubec or Pembroke town boat launch, Boat Landing Road, Pembroke

Collection Points Exclusion

Special Instructions CAUTION: This strategy is untested. Cobscook Bay has strong currents and confused seas. Many rocky areas that may not be accurately charted. Local knowledge is strongly advised.

Work Assignment Use extreme caution deploying this strategy. See special instructions. Deploy two 700 foot lengths of boom between Horan Head and Long Island. Deploy five 500 foot lengths and one 100 foot length of boom across South Bay between Long Island and Seaward Neck

Recommended Equipment / Resources

Length of Boom (feet) 4000 **Type of Boom** 12" to 18" containment boom

Recommended Equipment (Minimum)
12 - anchor systems: 35 lb. Danforth or equivalent and line for 3:1 scope plus tag lines and buoys.
4 - shoreside connections
2 - 4 workboats with minimum 90 hp
2 - 4 boat operators
4 - 8 laborers

Unless otherwise indicated, the boom length given is the distance measured on the chart. Actual length required may vary with conditions.

Last Desktop Validation: 5/4/2019

Last Field Visit: 6/14/2007

Last Field Test: