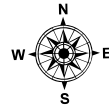
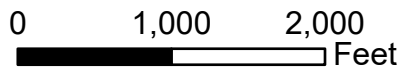


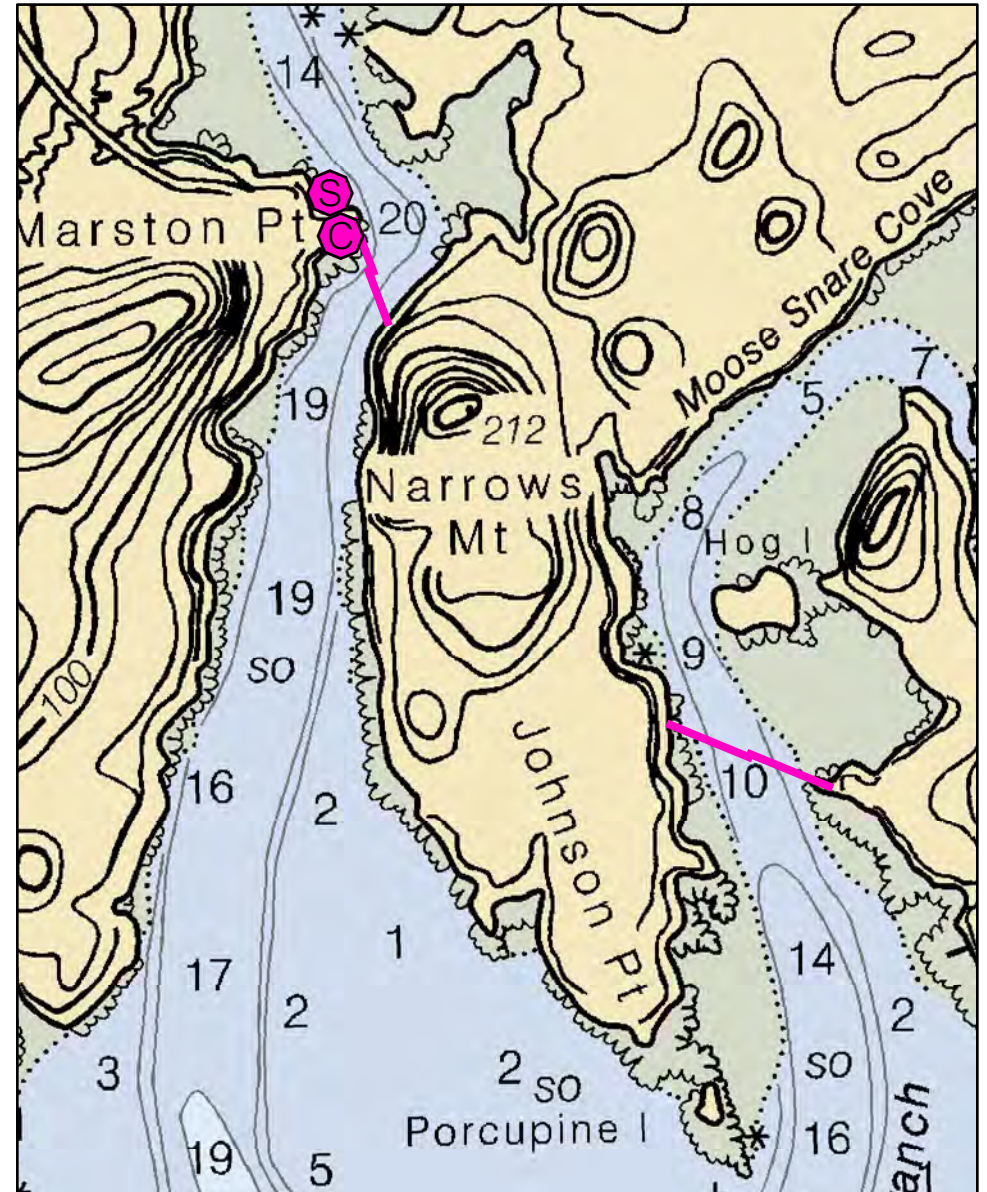
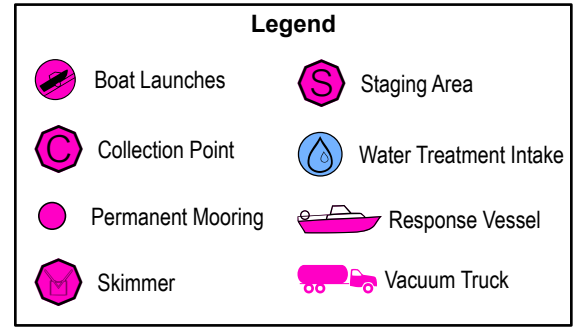
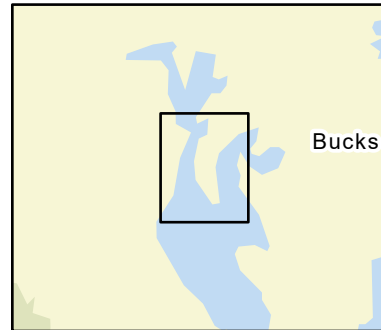
# D-15-1

## Little Kennebec Bay

### Machias / Machiasport, ME



Date printed: 9/10/2022 7:54 PM



# D-15-1 Little Kennebec Bay

**Town** Machias / Machiasport

**Latitude** 44° 39.068' N **Longitude** 67 26.348' W

**Approx. Tidal Range (feet)** 12

**Max Current (knots)** Flood Ebb

**Source**

**Port Region** Downeast

**NOAA Chart #** 13326\_1

**ESI Map #** 11A

**EVI Map #** 86, 85

**DeLorme Map # (2019)** 26 D3

## Resources At Risk

**ESI Primary Shoreline Type** Mixed sand and gravel beaches (5)

**ESI Secondary Shoreline Type** Exposed wave-cut platforms in bedrock, mud, or clay (2A)

**Environmental Concerns** Upper reaches of bay has extensive mudflats, shorebird and shellfish habitat, elver run

**Archaeological Conflicts** None noted. Contact MHPC at (207) 287-2132 if archaeological items are discovered.

## Strategy Information

**Strategy Purpose** To divert / exclude oil from upper reaches of Little Kennebec Bay

**Staging Areas** Marston Point at end of W Kennebec Road in Machias

**Site Access** Same as staging

**Nearest Boat Ramp** Marston Point at end of W Kennebec Road

**Collection Points** Marston Point boat launch. Limited opportunity for collection in Johnson Point area other than on water skimming

## Special Instructions

**Work Assignment** Deploy two 350 foot sections of boom across the channel from boat launch at Marston Point to shoreline near Narrows Mountain. Deploy two 500 foot sections across the channel from Johnson Point to eastern shoreline.

## Recommended Equipment / Resources

**Length of Boom (feet)** 1700 **Type of Boom** 12" to 18" containment boom

**Recommended Equipment (Minimum)**  
4 - anchor systems: 35 lb. Danforth or equivalent and line for 3:1 scope plus tag lines and buoys.  
4 - shoreside connections  
1 - vacuum truck or skimmer and storage  
2 - workboats with minimum 90 hp  
2 - boat operators  
4 - 6 laborers

Unless otherwise indicated, the boom length given is the distance measured on the chart. Actual length required may vary with conditions.

Last Desktop Validation: 5/3/2019

Last Field Visit

Last Field Test: