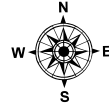
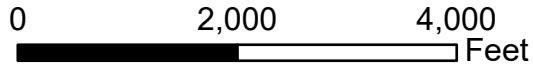
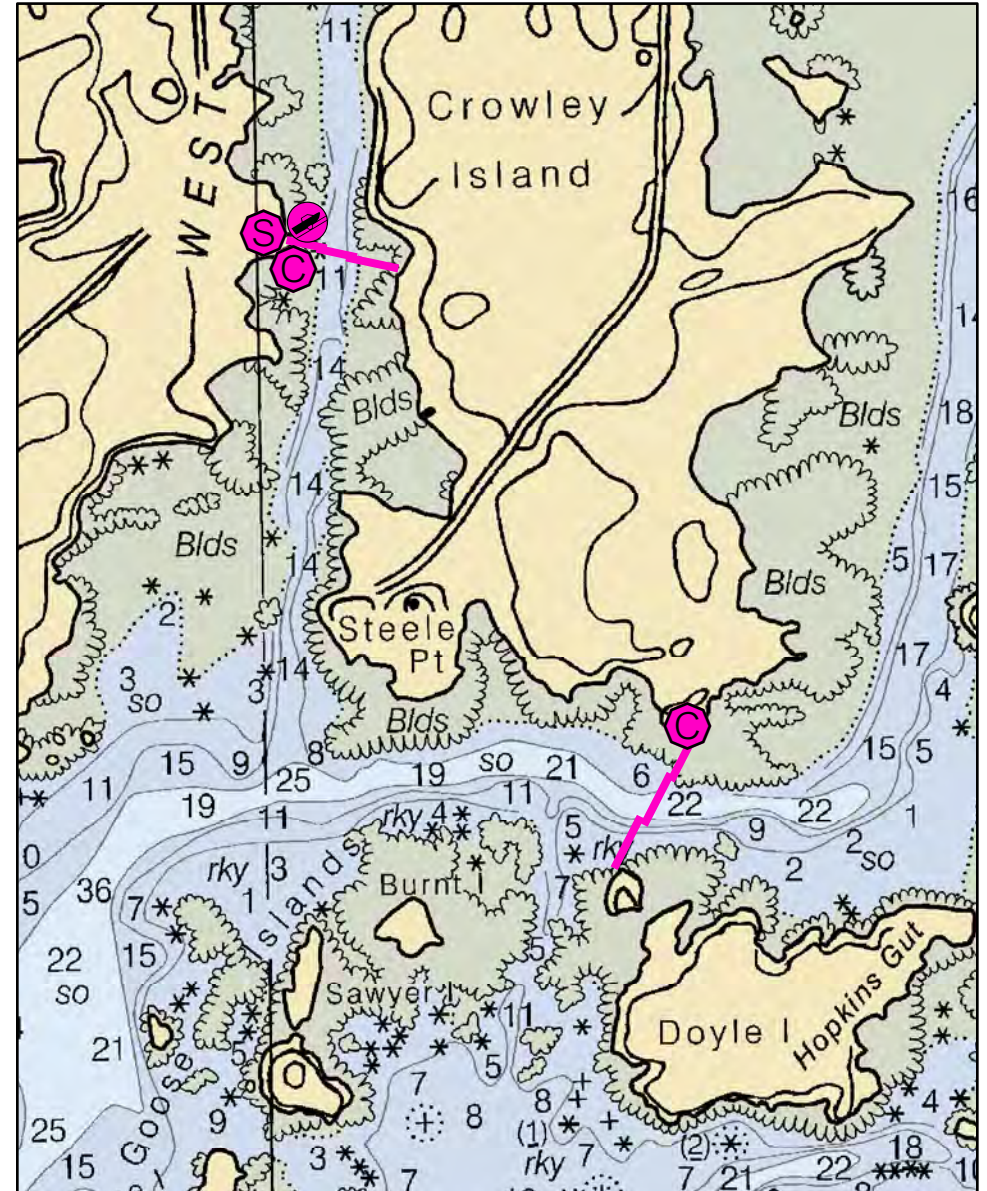
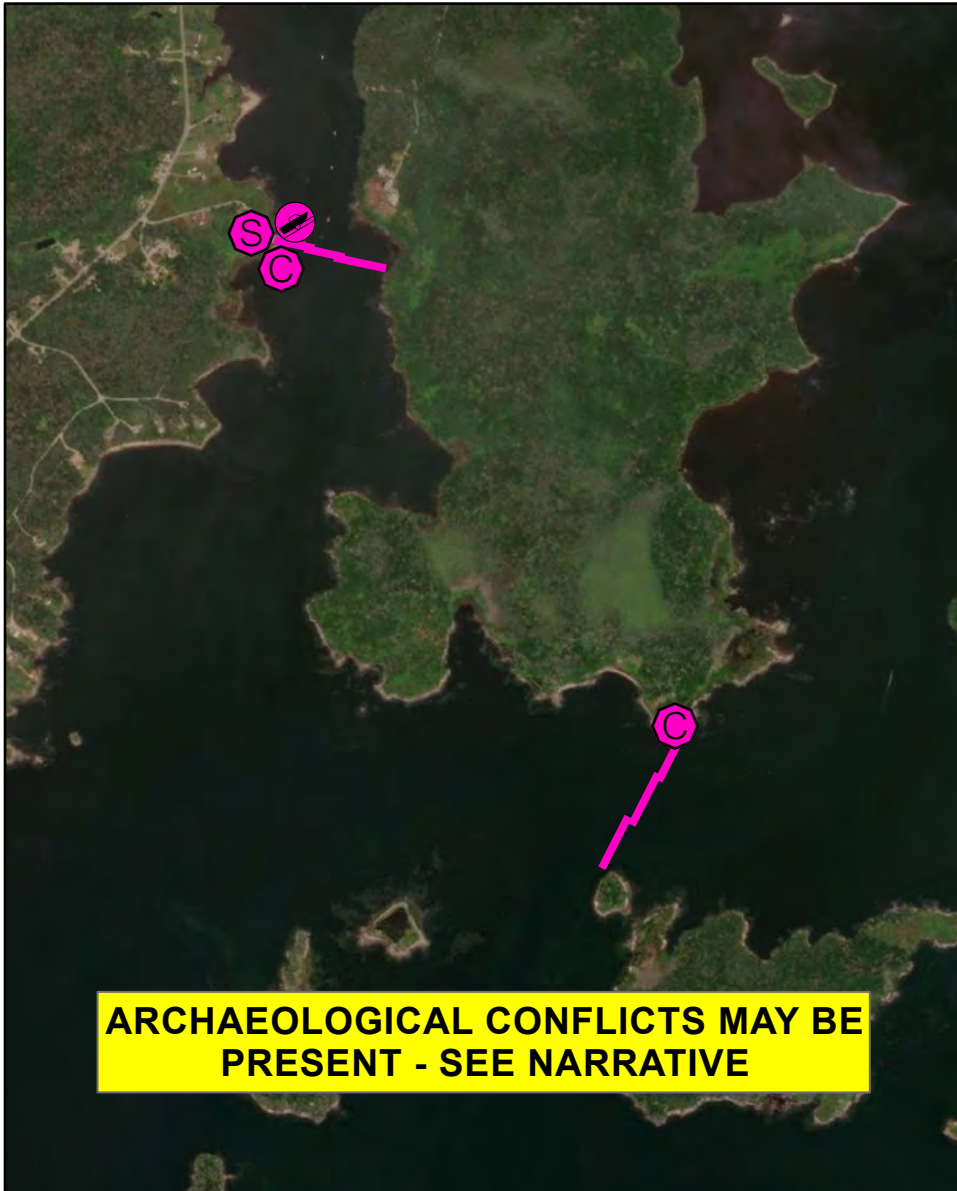
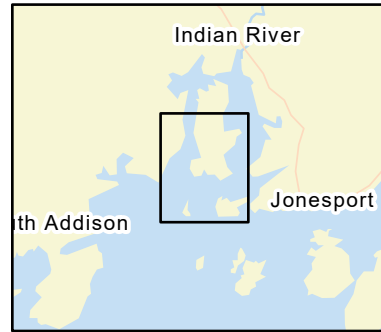


D-12-1

Wohoa Bay: Indian and West Rivers Addison, ME



Date printed: 9/10/2022 7:54 PM



D-12-1 Wohoa Bay: Indian & West Rivers

Town	Addison	Port Region	Downeast
Latitude	44° 32.250' N	Longitude	67° 39.390' W
Approx. Tidal Range (feet)	12	NOAA Chart #	13326_1
Max Current (knots)	Flood	ESI Map #	12C
Source	Ebb	EVI Map #	84, 80
		DeLorme Map # (2019)	26 E1

Resources At Risk

ESI Primary Shoreline Type	Vegetated low banks (9B)
ESI Secondary Shoreline Type	Mixed sand and gravel beaches (5)

Environmental Concerns Eelgrass, shellfish, shorebirds, diadromous fish and elver runs

Archaeological Conflicts No conflict as designed. Deviations from GRS design will require MHPC review. Contact MHPC at (207) 287-2132.

Strategy Information

Strategy Purpose	To divert oil from upper Indian and West Rivers
Staging Areas	West River Landing, Basin Road, Addison
Site Access	West River Landing, Basin Road, Addison
Nearest Boat Ramp	West River Landing, Basin Road, Addison
Collection Points	West River Landing, Addison and wharf on south end of Crowley Island, Addison (unsure of road access)
Special Instructions	Currents unknown. Observe prior to deployment. Rocky and difficult access.
Work Assignment	Deploy two 300 sections and one 400 foot section of boom across the West River to the West River Landing on Basin Road, Addison. Deploy three 500 foot sections of boom across the Indian River entrance from Doyle Island to wharf on south end of Crowley Island

Recommended Equipment / Resources

Length of Boom (feet)	2500	Type of Boom	12" to 18" containment boom
Recommended Equipment (Minimum)	West River: 4 - anchor systems: 35 lb. Danforth or equivalent and line for 3:1 scope plus tag lines and buoys. 2 - shoreside connections 1 - vacuum truck or skimmer and storage 2 - workboats with minimum 90 hp 2 - boat operators 4 - laborers	Indian River: 6 - anchor systems: 35 lb. Danforth or equivalent and line for 3:1 scope plus tag lines and buoys. 1 - vacuum truck or skimmer and storage if accessible 2 - workboats with minimum 90 hp 2 - boat operators 4 - laborers	

Unless otherwise indicated, the boom length given is the distance measured on the chart. Actual length required may vary with conditions.

Last Desktop Validation: 5/2/2019

Last Field Visit: 6/26/2007

Last Field Test: