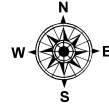
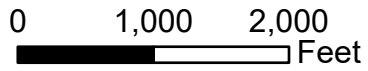


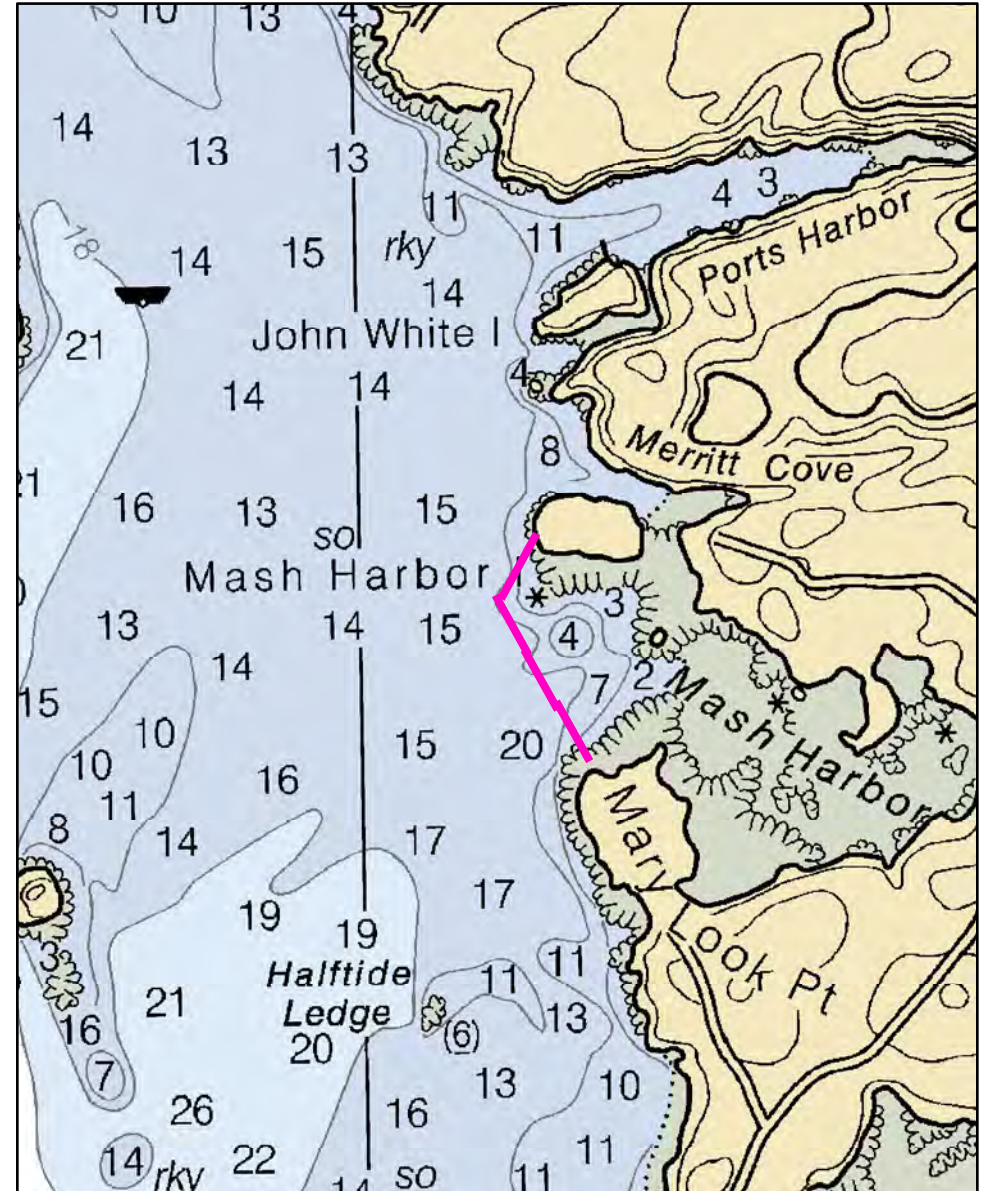
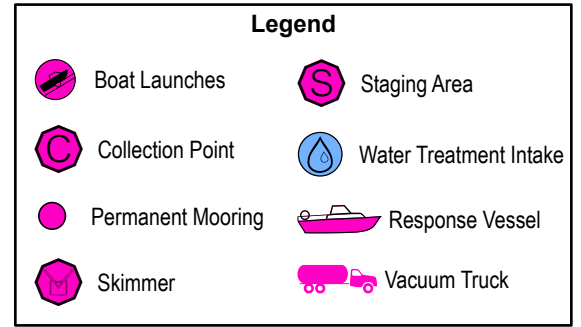
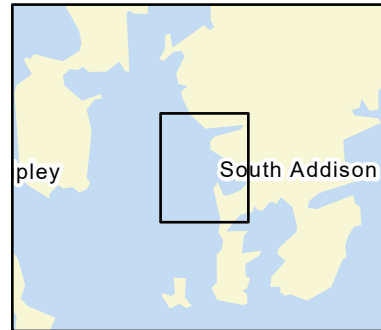
D-10-1

Mash Harbor

Addison, ME



Date printed: 9/10/2022 7:54 PM



D-10-1 Mash Harbor

Town	Addison	Port Region	Downeast
Latitude	44° 31.486	Longitude	67° 44.729
Approx. Tidal Range (feet)	12	NOAA Chart #	13324_1
Max Current (knots)	Flood < 1 knot	ESI Map #	12D, 18B
	Ebb	EVI Map #	79
Source	Local knowledge estimate	DeLorme Map # (2019)	25 E5

Resources At Risk

ESI Primary Shoreline Type Exposed wave-cut platforms in bedrock, mud, or clay (2A)

ESI Secondary Shoreline Type Mixed sand and gravel beaches (5)

Environmental Concerns Secondary to other Pleasant River strategies. Mudflat, eelgrass, shellfish bed, shorebird area

Archaeological Conflicts None noted. Contact MHPC at (207) 287-2132 if archaeological items are discovered.

Strategy Information

Strategy Purpose To exclude oil from Mash Harbor

Staging Areas South Addison town landing in Eastern Harbor, Narrows Road, Addison

Site Access By water from town landing

Nearest Boat Ramp South Addison town landing in Eastern Harbor, Narrows Road, Addison

Collection Points None. Exclusion strategy

Special Instructions Secondary to other Pleasant River strategies

Work Assignment Deploy one 500 foot and three 400 foot sections of boom across entrance to Mash Harbor

Recommended Equipment / Resources

Length of Boom (feet) 1700 **Type of Boom** 12" to 18" containment boom

Recommended Equipment (Minimum)
5 - anchor systems: 35 lb. Danforth or equivalent and line for 3:1 scope plus tag lines and buoys.
2 - shoreside connections
2 - 4 workboats with minimum 90 hp
2 - 4 boat operators
6 - 8 laborers

Unless otherwise indicated, the boom length given is the distance measured on the chart. Actual length required may vary with conditions.

Last Desktop Validation: 5/2/2019

Last Field Visit

Last Field Test: