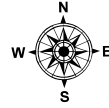
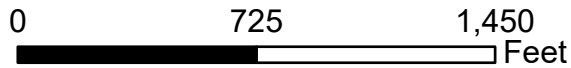


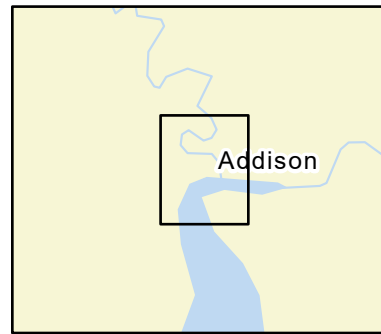
D-09-3

Pleasant River / Addison

Addison, ME



Date printed: 9/10/2022 7:54 PM

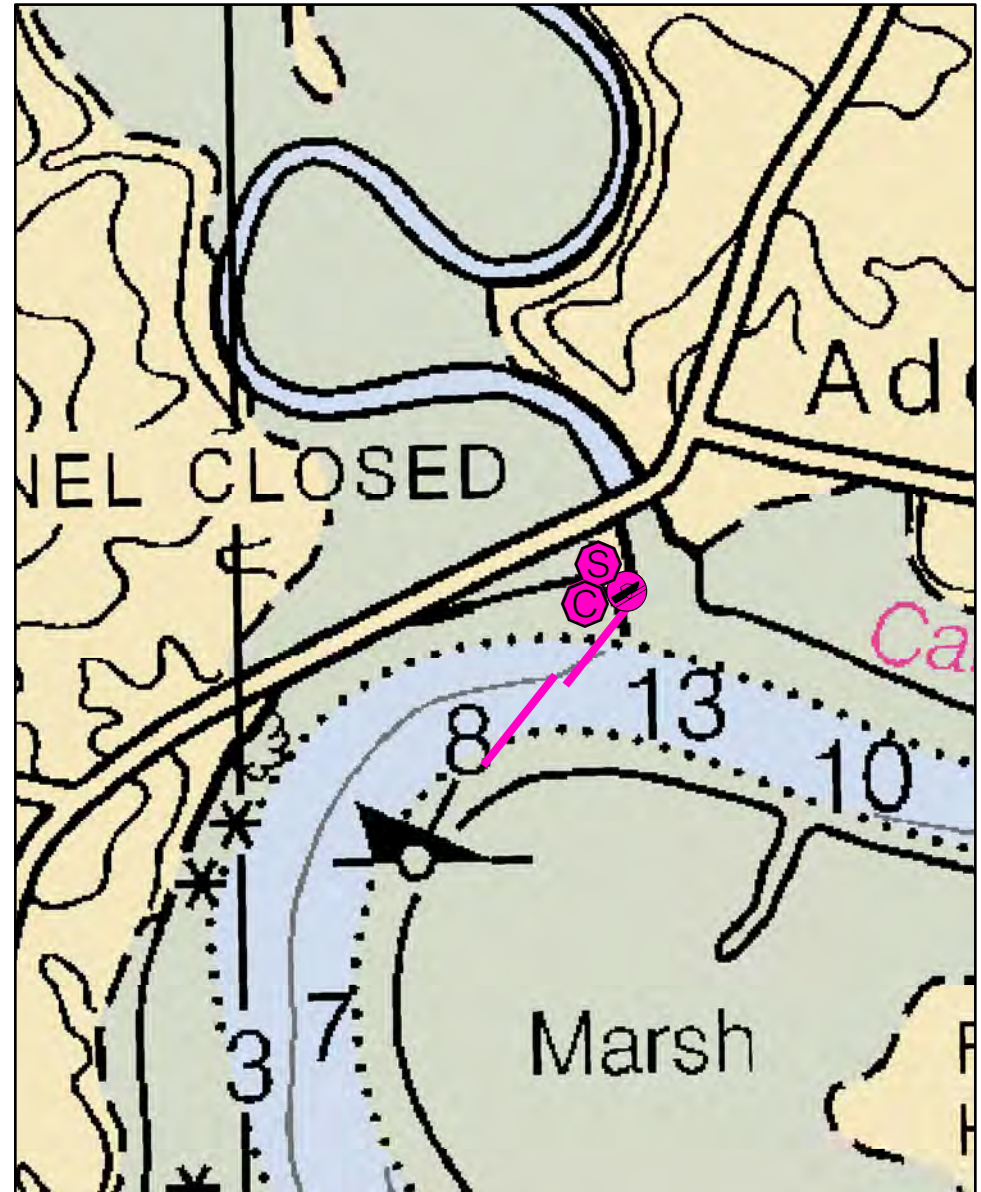


Legend

Boat Launches	Staging Area
Collection Point	Water Treatment Intake
Permanent Mooring	Response Vessel
Skimmer	Vacuum Truck



ENDANGERED SPECIES MAY BE PRESENT - SEE NARRATIVE



D-09-3 Pleasant River / Addison

Town Addison

Latitude 44° 36.998' N **Longitude** 67° 44.773' W

Approx. Tidal Range (feet) 12

Max Current (knots) Flood Ebb

Source

Port Region Downeast

NOAA Chart # 13324_1

ESI Map # 12D

EVI Map # 83

DeLorme Map # (2019) 25 D5

Resources At Risk

ESI Primary Shoreline Type Vegetated low banks (9B)

ESI Secondary Shoreline Type Salt- and brackish-water marshes (10A)

Environmental Concerns Federally endangered Atlantic Salmon may be present April - November. Extensive salt marshes upstream of this area.

Archaeological Conflicts None noted. Contact MHPC at (207) 287-2132 if archaeological items are discovered.

Strategy Information

Strategy Purpose To divert oil from upper and West Branch of Pleasant River.

Staging Areas Town of Addison boat ramp on site

Site Access Town of Addison boat ramp on site

Nearest Boat Ramp On site

Collection Points At boat launch

Special Instructions

Work Assignment Deploy two 350 foot lengths of boom across the Pleasant River

Recommended Equipment / Resources

Length of Boom (feet) 700 **Type of Boom** 12" to 18" containment boom

Recommended Equipment (Minimum)

- 3 - anchor systems: 35 lb. Danforth or equivalent and line for 3:1 scope plus tag lines and buoys.
- 1 - shoreside connections
- 1 - vacuum truck or skimmer and storage
- 1 - workboats with minimum 90 hp
- 1 - boat operators
- 4 - laborers

Unless otherwise indicated, the boom length given is the distance measured on the chart. Actual length required may vary with conditions.

Last Desktop Validation: 5/2/2019

Last Field Visit

Last Field Test: