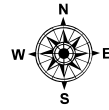
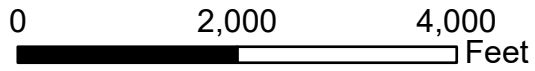
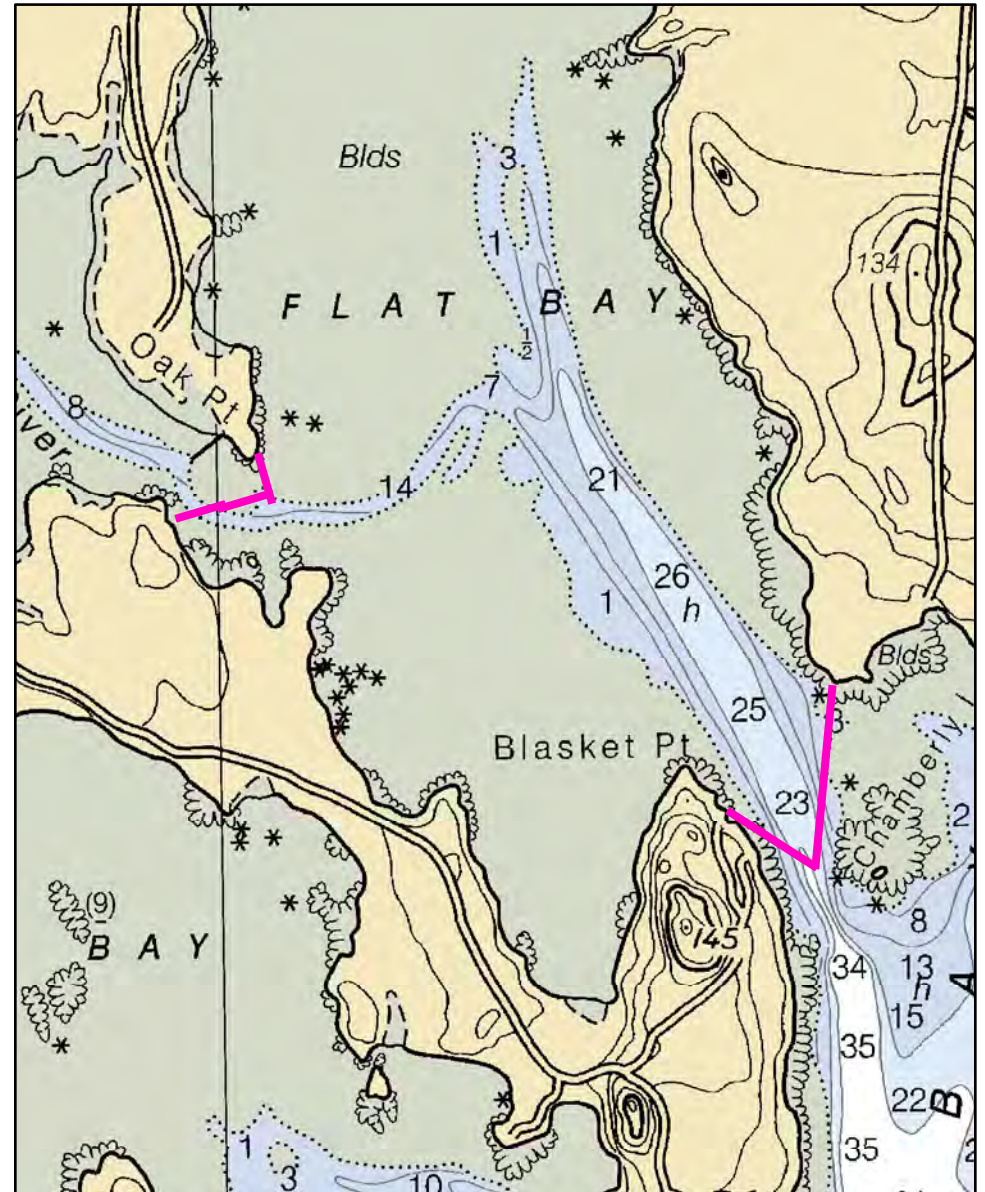
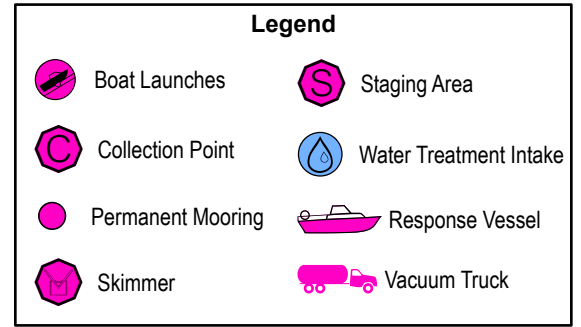
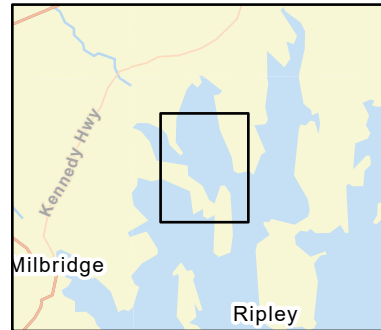


D-08-1

Flat Bay & Mill River Milbridge / Harrington, ME



Date printed: 9/10/2022 7:54 PM



D-08-1 Flat Bay & Mill River

Town Milbridge / Harrington

Port Region Downeast

Latitude 44° 33.822' N **Longitude** 67° 48.846' W

NOAA Chart # 13324_1

Approx. Tidal Range (feet) 12

ESI Map # 13A

Max Current (knots) Flood Ebb

EVI Map # 83

Source **DeLorme Map # (2019)** 25 E3, E4

Resources At Risk

ESI Primary Shoreline Type Exposed wave-cut platforms in bedrock, mud, or clay (2A)

ESI Secondary Shoreline Type Vegetated low banks (9B)

Environmental Concerns Flat Bay and Mill River have extensive valuable habitat, including mussel seed areas. Large aquaculture operation in Mill River area.

Archaeological Conflicts None noted. Contact MHPC at (207) 287-2132 if archaeological items are discovered.

Strategy Information

Strategy Purpose Secondary strategies to exclude oil from Flat Bay and Mill River

Staging Areas Town of Harrington boat launch at Ripley Cove, Marshville Road, Harrington

Site Access Town of Harrington boat launch

Nearest Boat Ramp Town of Harrington boat launch

Collection Points None - exclusion

Special Instructions

Work Assignment Back-up strategies for D-07-1. Deploy three 300' sections of boom in southeast direction from Blasket Point & anchor in the center of channel; deploy four 400' sections in a southerly direction from mainland point of land north of Chamberly Island & anchored in center of channel to form an apex with the first section of boom. Deploy 400' of boom in a southeasterly direction from Oak Point and anchor in center of channel; deploy two 400 foot sections of boom in a northeasterly direction from point of land directly south of Oak Point and anchor in the center of channel to form an apex with the first section.

Recommended Equipment / Resources

Length of Boom (feet) 3700

Type of Boom 12" to 18" containment boom

Recommended Equipment (Minimum)
16 - anchor systems: 35 lb. Danforth or equivalent and line for 3:1 scope plus tag lines and buoys.
3 - shoreside connections
2 - 3 workboats with minimum 90 hp
2 - 3 boat operators
6 - laborers

Unless otherwise indicated, the boom length given is the distance measured on the chart. Actual length required may vary with conditions.

Last Desktop Validation: 5/1/2019

Last Field Visit: 6/27/2007

Last Field Test: