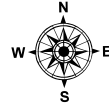
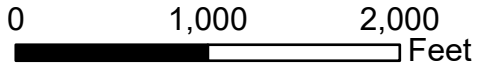
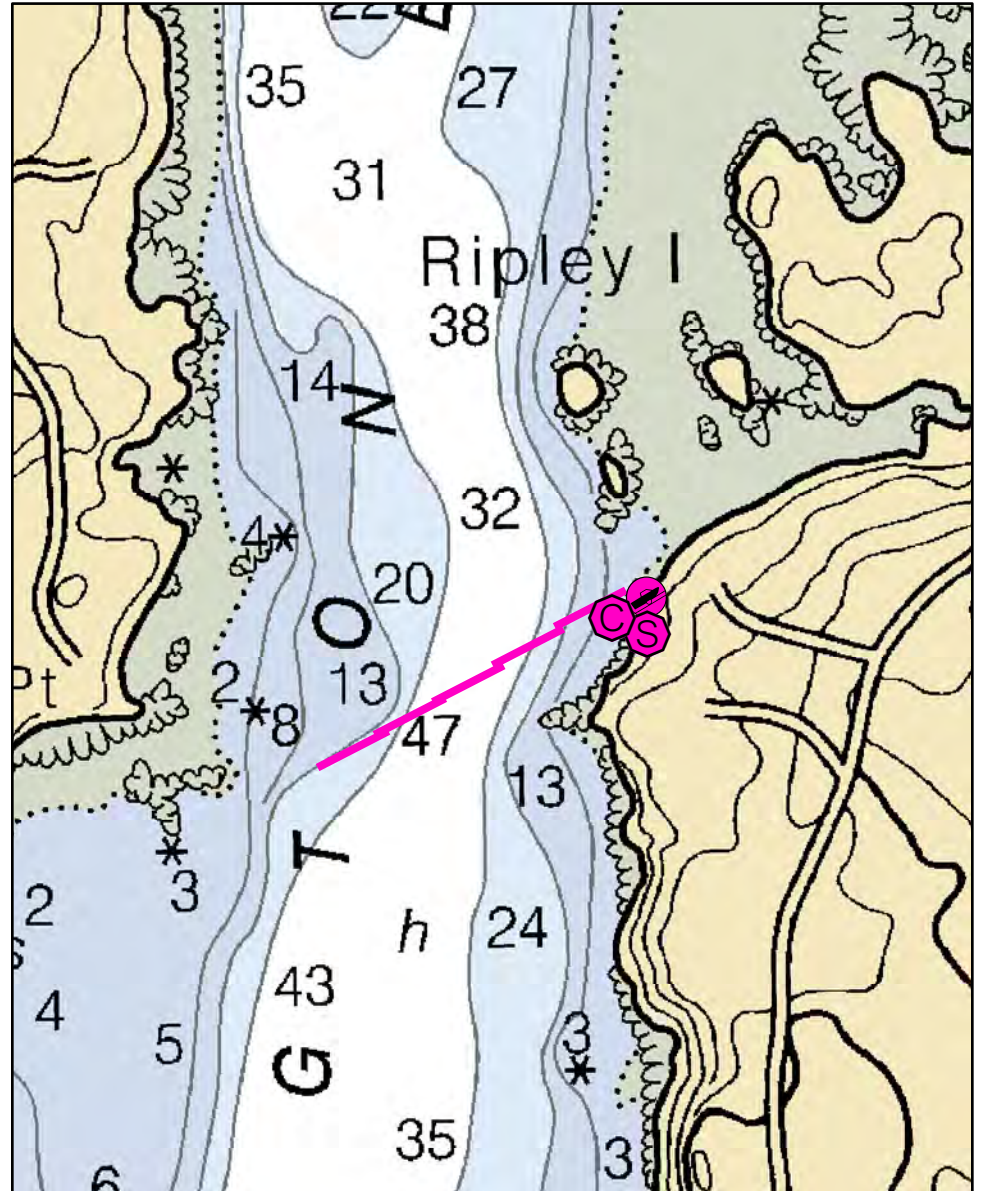
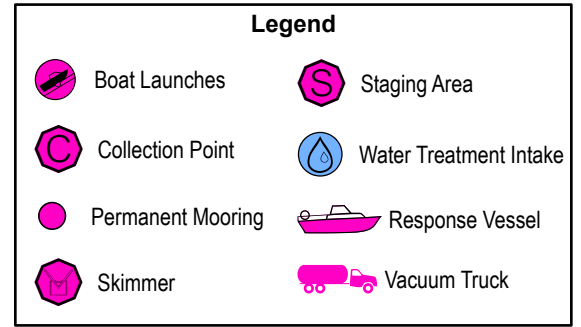
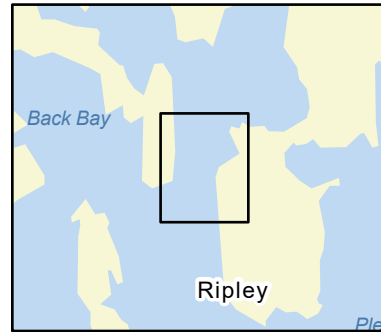


D-07-1

Harrington Bay / River Harrington, ME



Date printed: 9/10/2022 7:54 PM



D-07-1 Harrington Bay/River

Town Harrington

Latitude 44° 32.622' N **Longitude** 67° 48.444' W

Approx. Tidal Range (feet) 12

Max Current (knots) Flood Ebb

Source

Port Region Downeast

NOAA Chart # 13324_1

ESI Map # 13A, 12D

EVI Map # 83, 79

DeLorme Map # (2019) 25 E4

Resources At Risk

ESI Primary Shoreline Type Mixed sand and gravel beaches (5)

ESI Secondary Shoreline Type

Environmental Concerns This is the first line of defense for very valuable habitat in Flat Bay and Harrington River. Mussel seed areas, marshes, shellfish, shorebirds, diadromous fish, elvers, etc.

Archaeological Conflicts None noted. Contact MHPC at (207) 287-2132 if archaeological items are discovered.

Strategy Information

Strategy Purpose To divert oil from Flat Bay and upper Harrington River

Staging Areas Harrington town boat launch at Ripley Cove, Marshville Road, Harrington

Site Access Harrington town boat launch at Ripley Cove

Nearest Boat Ramp Harrington town boat launch at Ripley Cove

Collection Points Harrington town boat launch at Ripley Cove

Special Instructions Extensive habitat upriver of this area.

Work Assignment Deploy five 400 foot sections of boom across channel

Recommended Equipment / Resources

Length of Boom (feet) 2000

Type of Boom 12" to 18" containment boom

Recommended Equipment (Minimum)
9 - anchor systems: 35 lb. Danforth or equivalent and line for 3:1 scope plus tag lines and buoys.
1 - shoreside connection
1 - vacuum truck or skimmer and storage
2 - workboats with minimum 90 hp
2 - boat operators
4 - laborers

Unless otherwise indicated, the boom length given is the distance measured on the chart. Actual length required may vary with conditions.

Last Desktop Validation: 5/1/2019

Last Field Visit: 6/27/2007

Last Field Test: