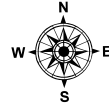
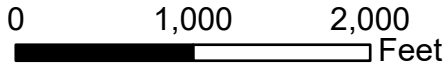
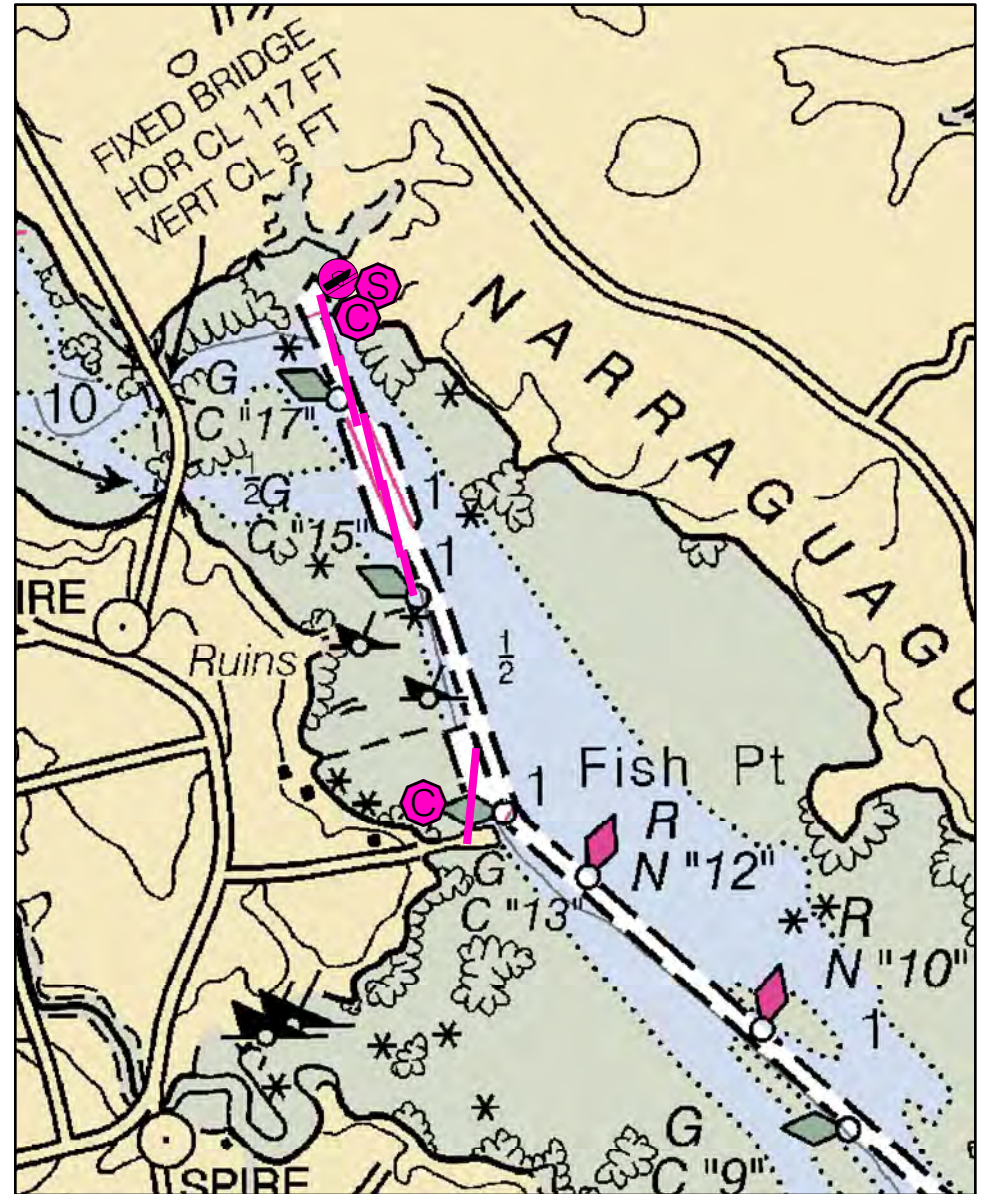
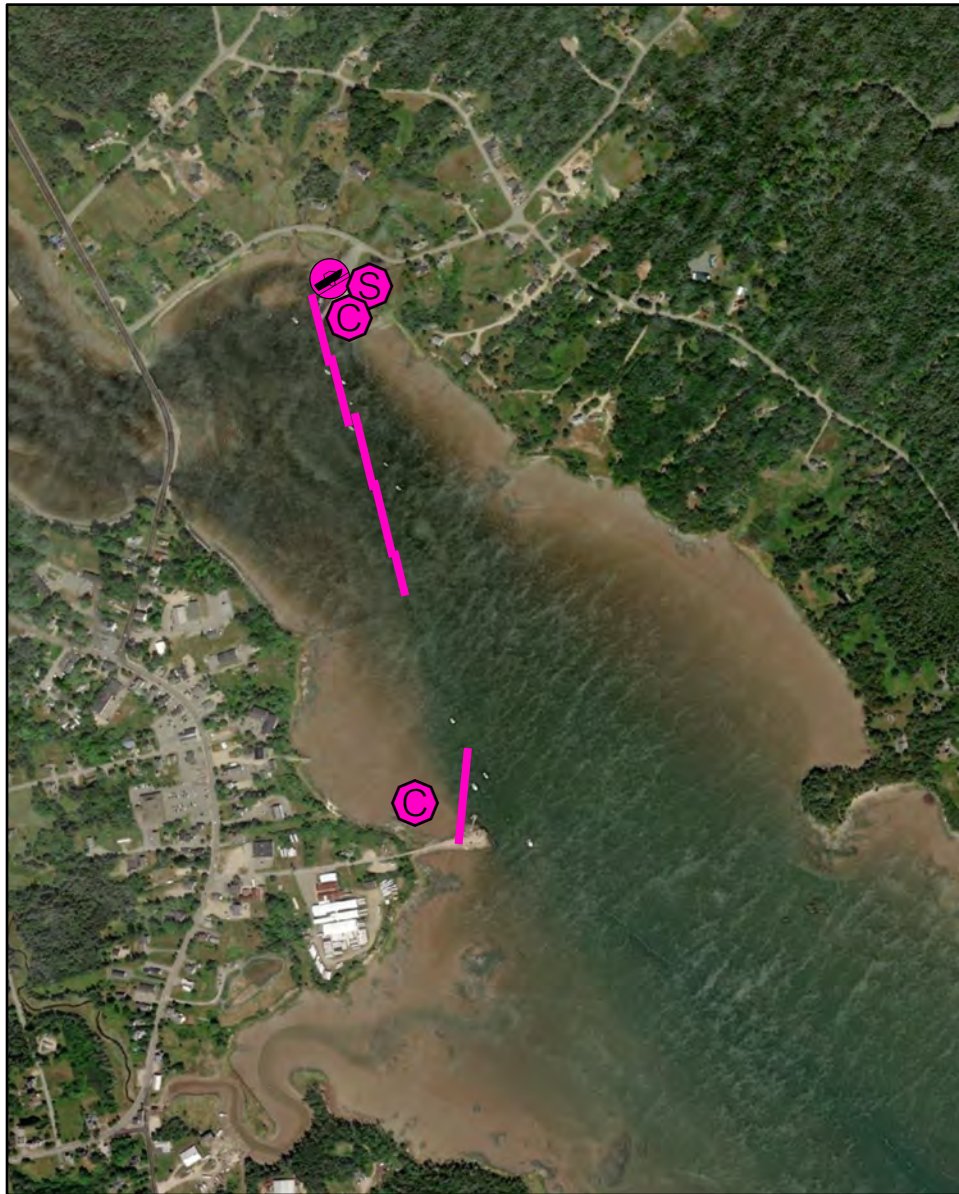
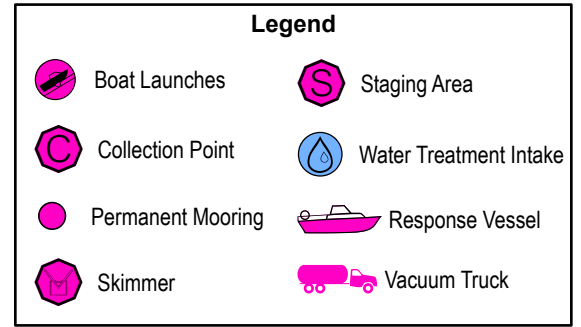
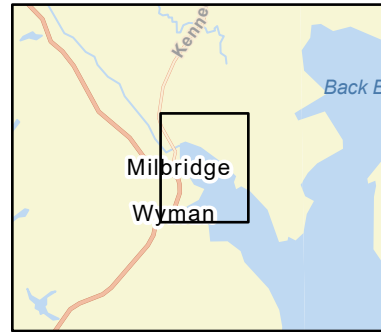


D-05-1

Narraguagus River Milbridge, ME



Date printed: 9/12/2022 10:23 AM



D-05-1 Narraguagus River

Town Milbridge

Latitude 44° 32.61' N **Longitude** 67° 52.75' W

Approx. Tidal Range (feet) 12

Max Current (knots) Flood Ebb

Source

Port Region Downeast

NOAA Chart # 13324_1

ESI Map # 13A

EVI Map # 78, 82

DeLorme Map # (2019) 25 E3

Resources At Risk

ESI Primary Shoreline Type Exposed tidal flats (7)

ESI Secondary Shoreline Type Vegetated low banks (9B)

Environmental Concerns Federally endangered Atlantic Salmon April - November. Upstream: fringing marshes, shorebird habitat, elver run. Downstream: Mudflats, shellfish beds, moderately and highly vulnerable shorebird areas

Archaeological Conflicts None noted. Contact MHPC at (207) 287-2132 if archaeological items are discovered.

Strategy Information

Strategy Purpose To divert oil from Upper Narraguagus River

Staging Areas Narraguagus River boat launch, Bay View Road off of Route 1A, Milbridge

Site Access Narraguagus River boat launch (east side) or Mill Street, downtown Milbridge (west side)

Nearest Boat Ramp Narraguagus River boat launch

Collection Points Narraguagus River boat launch or Mill Street, downtown Milbridge

Special Instructions Major risk is from local boats or Route 1A bridge

Work Assignment Cascade two 300 foot sections, two 400 foot sections and one 100 foot section of boom from boat launch into channel to deflect oil to the shore for collection. Place a third 500 foot length of boom from the western shore near GC 13 to keep oil in the channel. For spill from upstream, collect at wharf from end of Mill St., downtown Milbridge

Recommended Equipment / Resources

Length of Boom (feet) 2300

Type of Boom 12" to 18" containment boom

Recommended Equipment (Minimum)
9 - anchor systems: 35 lb. Danforth or equivalent and line for 3:1 scope plus tag lines and buoys.
2 - shoreside connections
1 - vacuum truck or skimmer and storage
2 - workboats with minimum 90 hp
2 - boat operators
6 - laborers

Unless otherwise indicated, the boom length given is the distance measured on the chart. Actual length required may vary with conditions.

Last Desktop Validation: 5/1/2019

Last Field Visit: 7/14/2009

Last Field Test: 7/14/2009