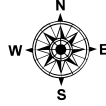
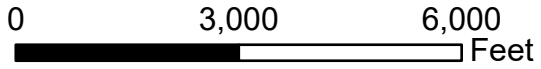
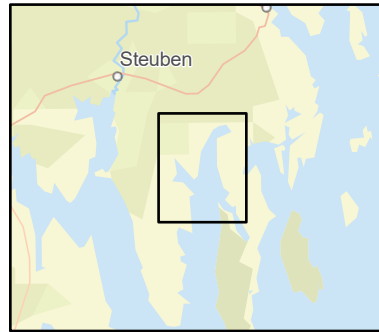


# D-03-1

## Dyer Bay Steuben, ME

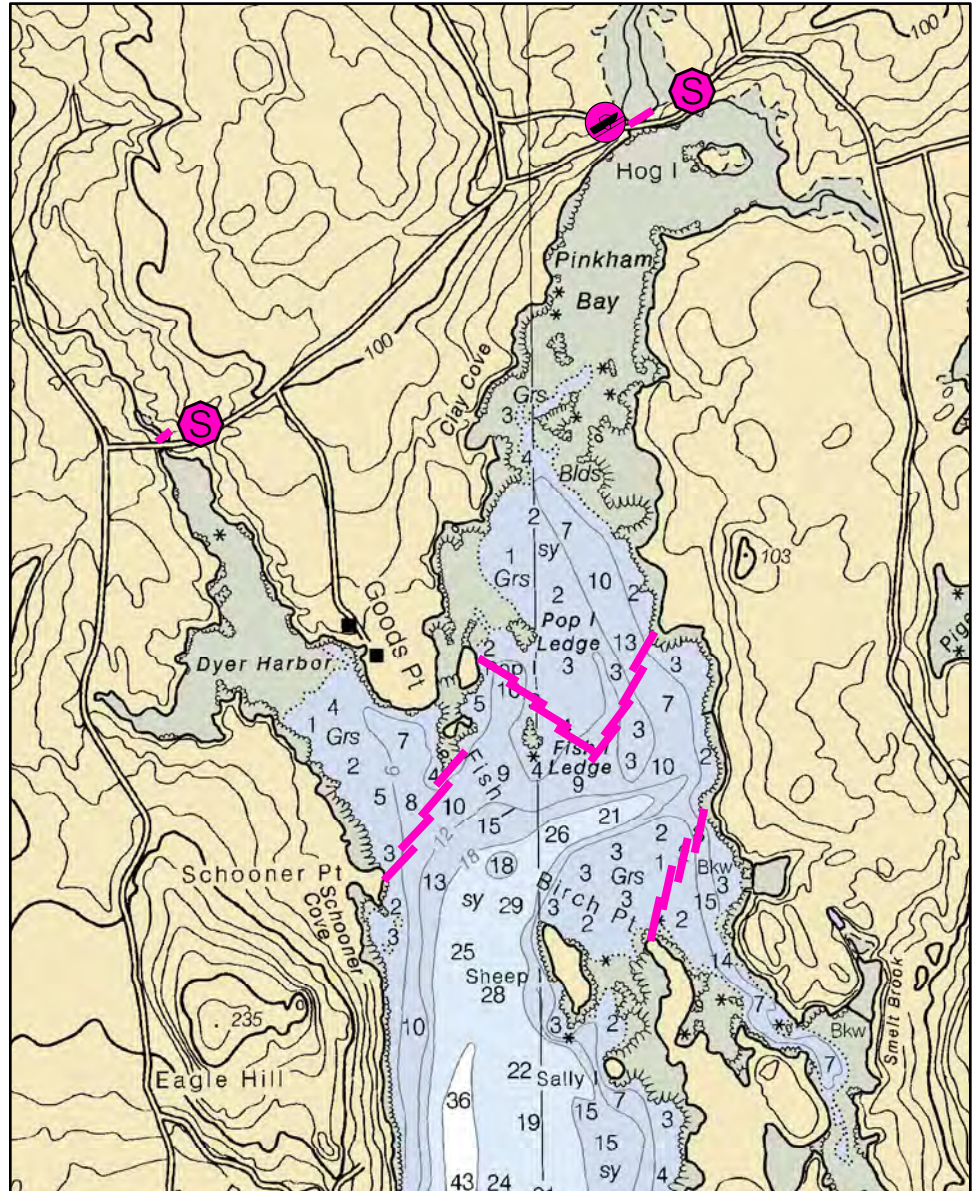
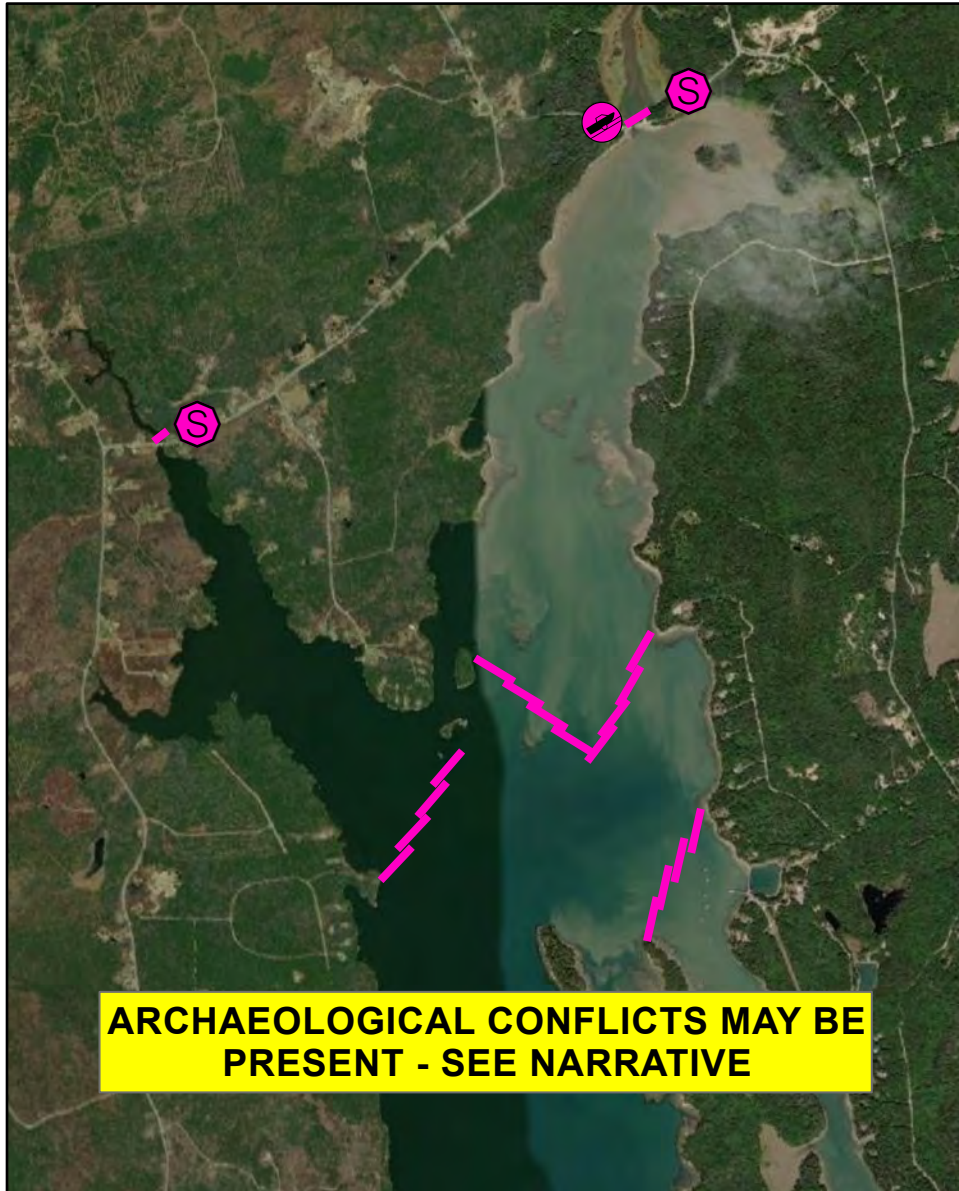


Date printed: 9/10/2022 7:53 PM



### Legend

	Boat Launches		Staging Area
	Collection Point		Water Treatment Intake
	Permanent Mooring		Response Vessel
	Skimmer		Vacuum Truck



# D-03-1 Dyer Bay

Town Steuben

Port Region Downeast

Latitude 44° 28.006 Longitude 67° 54.906

NOAA Chart # 13324\_1

Approx. Tidal Range (feet) 12

ESI Map # 19A, 19B

Max Current (knots) Flood Ebb

EVI Map # 78

Source DeLorme Map # (2019) 17 A2

## Resources At Risk

ESI Primary Shoreline Type Mixed sand and gravel beaches (5)

ESI Secondary Shoreline Type

Environmental Concerns Upper Dyer Bay contains many sensitive resources: mudflats, marshes, shorebird areas, seal haul-outs, shellfish beds, lobster pounds and aquaculture sites.

Archaeological Conflicts No conflict as designed. Deviations from GRS design will require MHPC review. Contact MHPC at (207) 287-2132.

## Strategy Information

Strategy Purpose To prevent oil from entering upper Dyer Bay. Channel could also be explored for a potential strategy across the bay, but currents will likely prevent this.

Staging Areas Extremely limited. Small part tide launch at Pinkham Bay Bridge Road. May be able to pull boom from here, but will likely have to close road. Dyer Harbor has no launch and will require road closure to work there as well.

Site Access Same as staging areas

Nearest Boat Ramp Small part tide launch at Pinkham Bay Bridge Road on north end of bay. No all-tide ramp nearby. Closest is Narraguagus River in Milbridge.

Collection Points N/A other than open water collection

Special Instructions Explore possibility of booming across main channel near Birch Point

Work Assignment In order of priority: Deploy eight 500 foot sections of boom in a chevron configuration to exclude oil from Pinkham Bay to the north. Deploy four 500 foot sections of boom to deflect oil from Dyer Harbor. Deploy four 500 foot sections from Birch Point in a northeasterly direction to deflect oil from Carrying Place Cove. If large strategies cannot be implemented, at minimum deploy 250 of boom by hand across entrance to marsh at Pinkham Bay Bridge Road, and 50 feet of boom by hand across the entrance to the marsh at Dyer's Bay Road at the head of Dyer Harbor.

## Recommended Equipment / Resources

Length of Boom (feet) 8000 Type of Boom 12" to 18" containment boom

Recommended Equipment (Minimum) 27 - anchor systems: 35 lb. Danforth or equivalent and line for 3:1 scope plus tag lines and buoys.  
5 - shoreside connections  
2 - workboats with minimum 90 hp  
2 - boat operators  
6 - laborers

Unless otherwise indicated, the boom length given is the distance measured on the chart. Actual length required may vary with conditions.

Last Desktop Validation: 4/26/2019

Last Field Visit

Last Field Test: