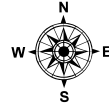
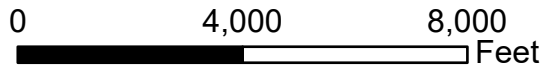


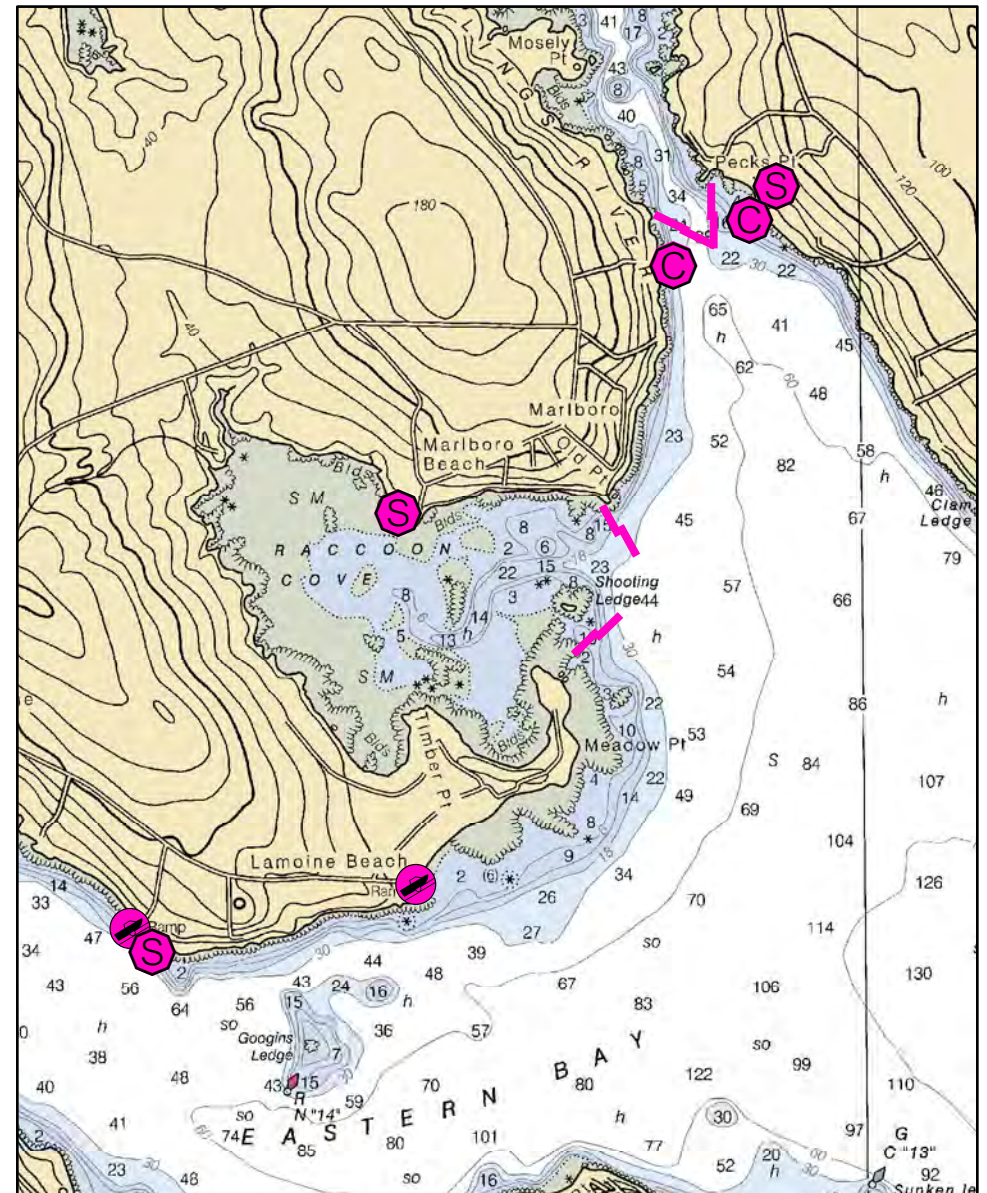
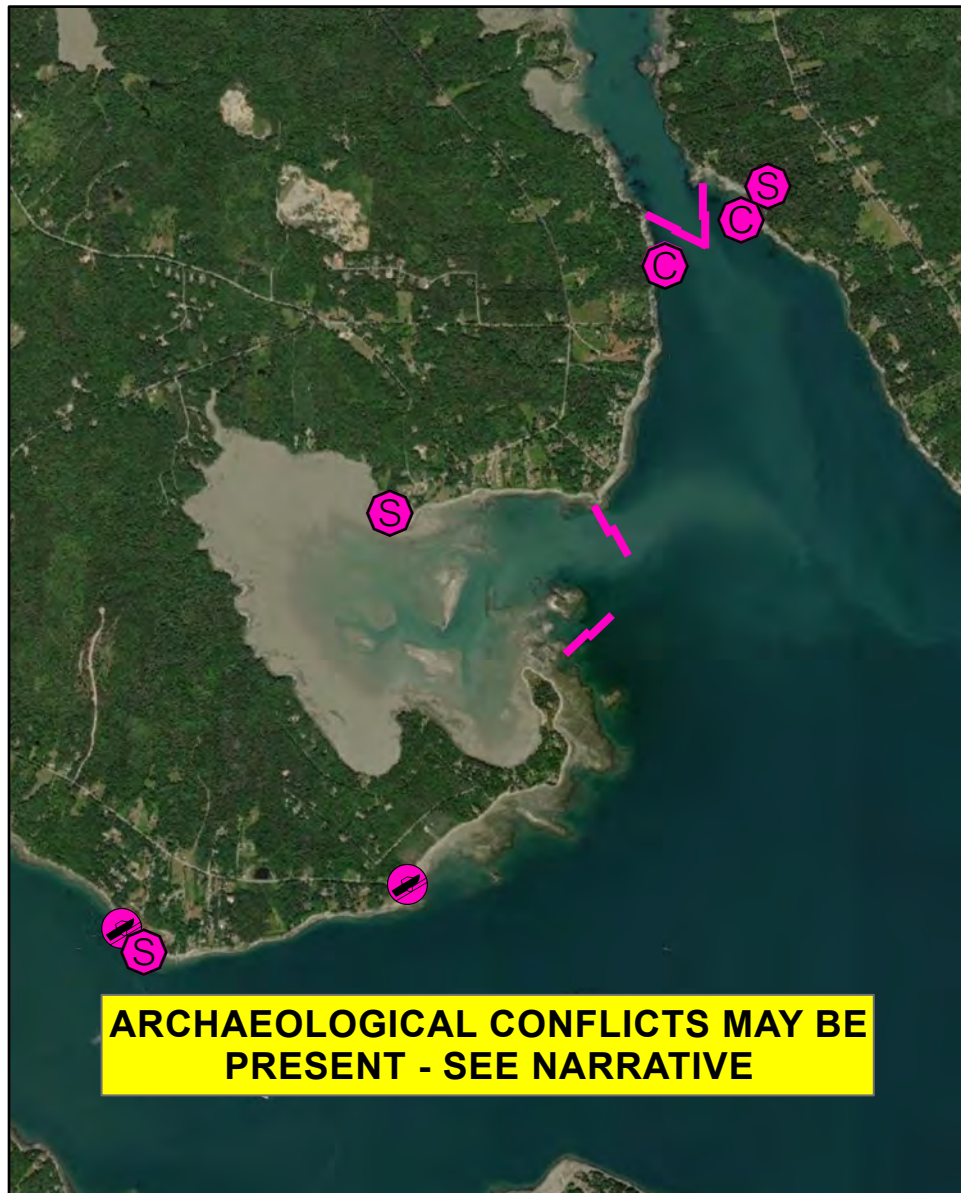
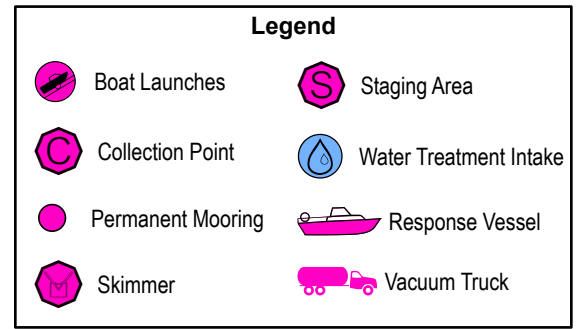
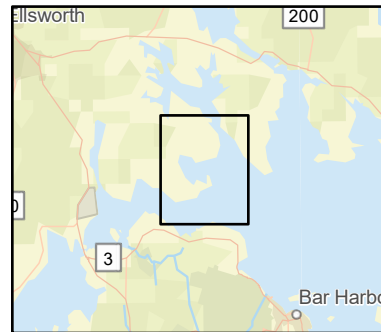
C-39-1

Skillings River / Raccoon Cove

Bar Harbor / Lamoine, ME



Date printed: 9/10/2022 7:53 PM



C-39-1 Skillings River / Raccoon Cove

Town Bar Harbor / Lamoine

Port Region Penobscot Bay

Latitude 44° 28.704' N **Longitude** 68° 15.450' W

NOAA Chart # 13318_1

Approx. Tidal Range (feet) 11

ESI Map # 21A, 20B

Max Current (knots) **Flood** 2 kts **Ebb**

EVI Map # 68, 69

Source Local knowledge estimate

DeLorme Map # (2019) 16 A3

Resources At Risk

ESI Primary Shoreline Type Sheltered rocky shores (8A)

ESI Secondary Shoreline Type Sheltered tidal flats (9A)

Environmental Concerns Shorebirds, shellfish, eelgrass and marine worms in Raccoon Cove and Skillings River. Bald eagle nesting sites, diadromous fish runs and elver runs in Skillings River.

Archaeological Conflicts No conflict as designed. Deviations from GRS design will require MHPC review. Contact MHPC at (207) 287-2132.

Strategy Information

Strategy Purpose To deflect oil from entering Raccoon Cove and Skillings River

Staging Areas Frenchman Bay public boat ramp, end of Lamoine Beach Road, Lamoine

Site Access Access to water at higher stages of tide from Marlboro Beach in Raccoon Cove (closest address 183 Marlboro Beach Road, Lamoine). May be able to pull boom from here. For Skillings River, nearest address to west shore is 64 Guardhouse Point, Lamoine. East shore: 79 Juniper Ledge, Hancock. May be able to pull boom from east shore gravel beach.

Nearest Boat Ramp Frenchman Bay public boat ramp, end of Lamoine Beach Road, Lamoine

Collection Points Possible collection from shoreline at each end of boom in Skillings River (see Site Access). Raccoon Cove is deflection only.

Special Instructions Skillings River may have strong current. Monitor at mid-tide.

Work Assignment Deploy four 500 foot lengths of boom in a chevron configuration at the entrance to Skillings River. Depending on tide, deploy two 500 foot lengths of boom at either side of Raccoon Cove entrance.

Recommended Equipment / Resources

Length of Boom (feet) 4000

Type of Boom 12" to 18" containment boom

Recommended Equipment (Minimum) Raccoon Cove:
6 - anchor systems: 35 lb. Danforth or equivalent and line for 3:1 scope plus tag lines and buoys.
2 - shoreside connections
2 - workboats with minimum 90 hp
2 - boat operators
4 - laborers

Skillings River:
5 - anchor systems: 35 lb. Danforth or equivalent and line for 3:1 scope plus tag lines and buoys. Center of chevron may need two anchors
2 - shoreside connections
1 - 2 vacuum trucks or skimmers and storage
2 - workboats with minimum 90 hp
2 - boat operators
4 - laborers

Unless otherwise indicated, the boom length given is the distance measured on the chart. Actual length required may vary with conditions.

Last Desktop Validation: 2/14/2019

Last Field Visit 7/2/2007

Last Field Test: