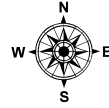
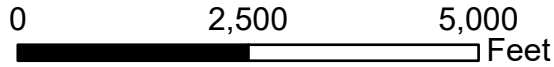
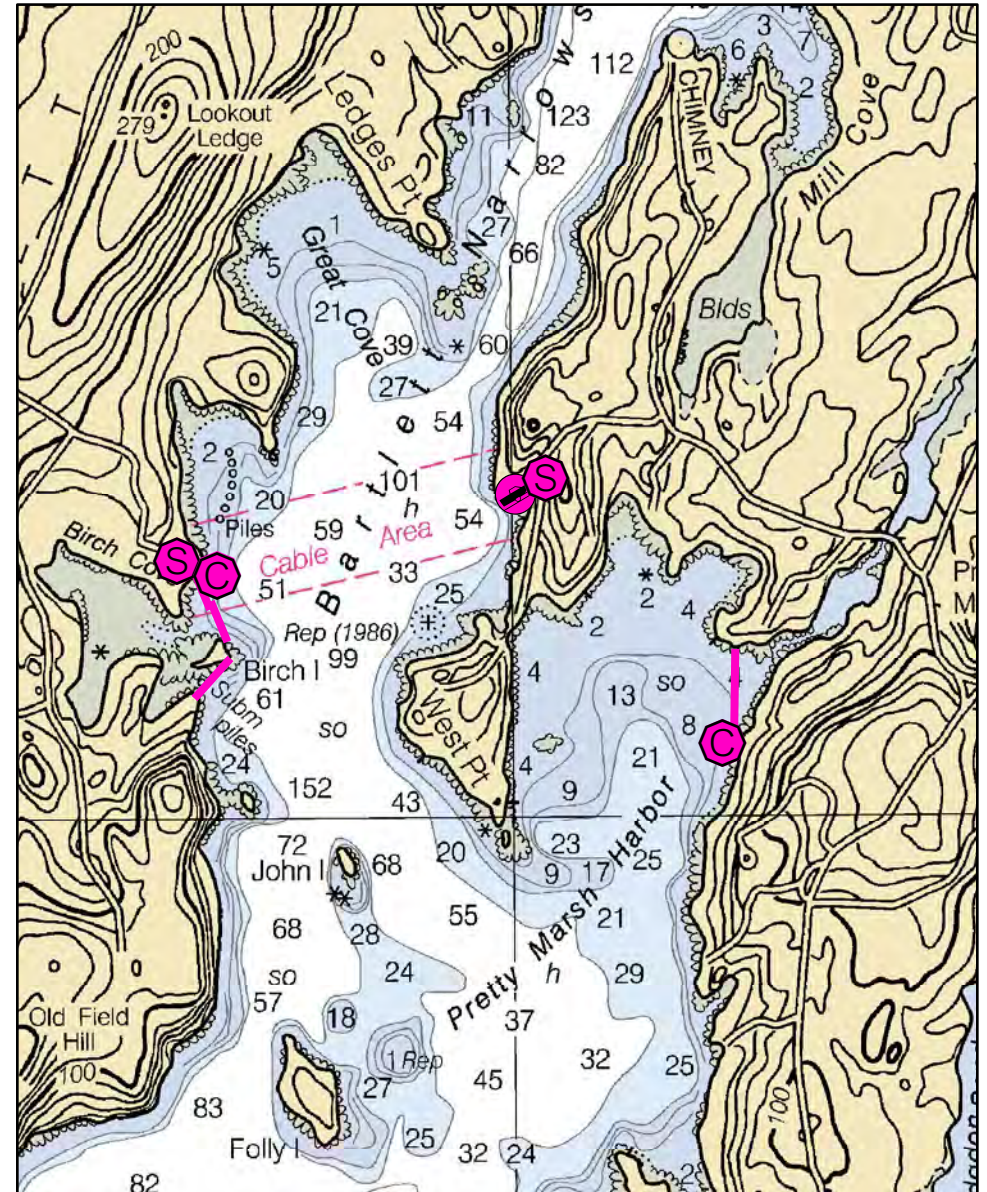
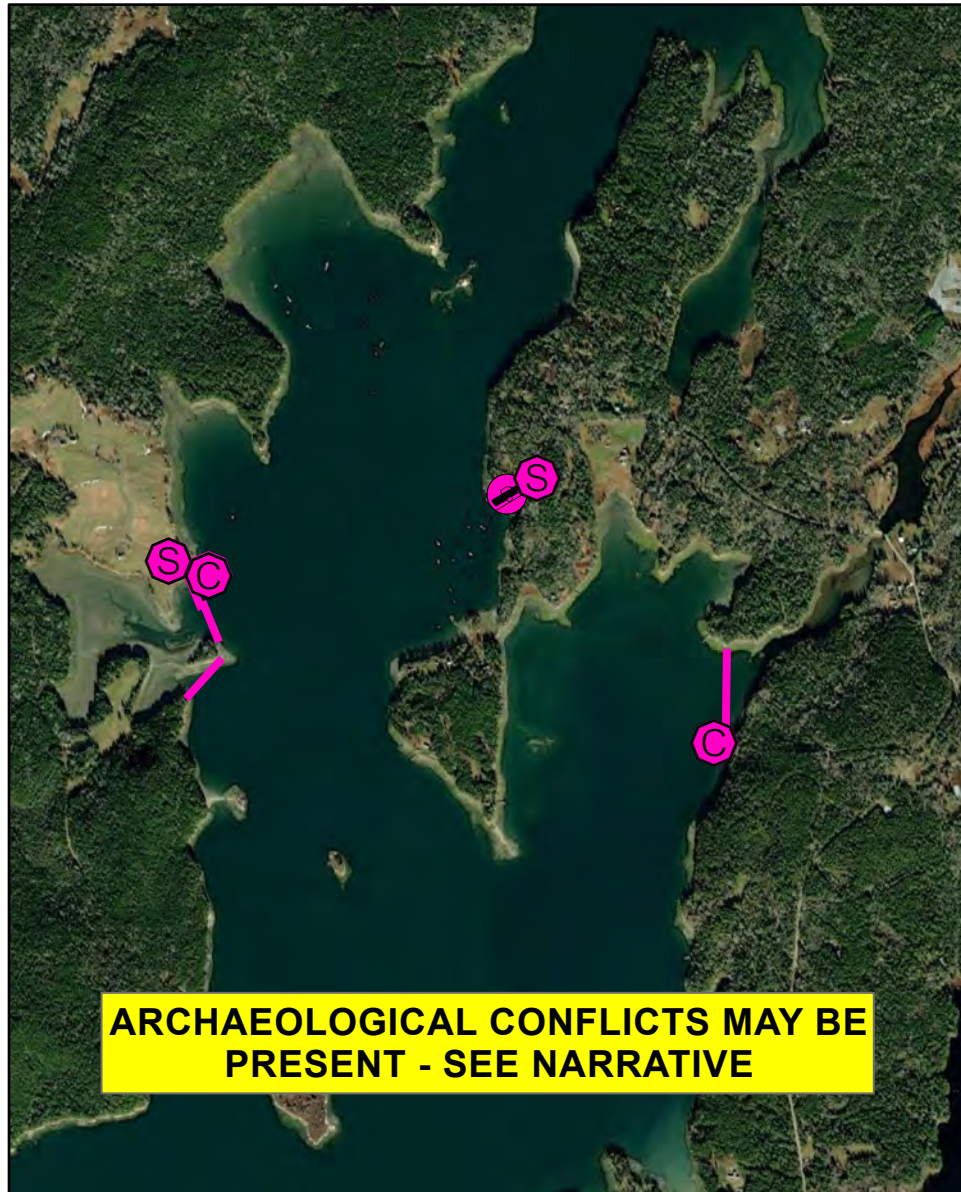
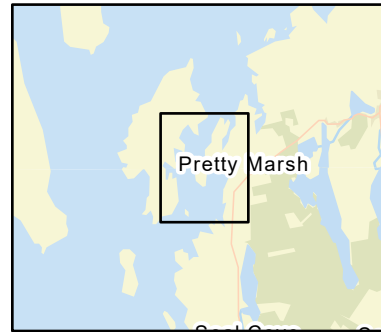


# C-33-2

## Bartlett Narrows: Pretty Marsh Harbor & Birch Cove Mount Desert, ME



Date printed: 9/10/2022 7:53 PM





# C-33-2 Bartlett Narrows: Pretty Marsh Harbor & Birch Cove

<b>Town</b>	Mount Desert	<b>Port Region</b>	Penobscot Bay
<b>Latitude</b>	44° 20.211' N	<b>Longitude</b>	68° 24.548' W
<b>Approx. Tidal Range (feet)</b>	11	<b>NOAA Chart #</b>	13316_1
<b>Max Current (knots)</b>	<b>Flood</b> < 1 knot	<b>ESI Map #</b>	21D
	<b>Ebb</b>	<b>EVI Map #</b>	60, 61
<b>Source</b>	Local knowledge estimate	<b>DeLorme Map # (2019)</b>	16 B2

## Resources At Risk

**ESI Primary Shoreline Type** Mixed sand and gravel beaches (5)

**ESI Secondary Shoreline Type** Exposed tidal flats (7)

**Environmental Concerns** Salt marsh, sheltered flats, eelgrass, shellfish beds

**Archaeological Conflicts** No conflict as designed. Deviations from GRS design will require MHPC review. Contact MHPC at (207) 287-2132.

## Strategy Information

**Strategy Purpose** To exclude / divert oil from inner Pretty Marsh Harbor, which is first priority. Secondary strategy is to exclude / divert oil from Birch Cove.

**Staging Areas** Bartlett Narrows boat launch, Bartlett Landing Road, Mount Desert or private landing on Bartlett Island owned by Rockefeller family.

**Site Access** Bartlett Narrows boat launch or private landing on Bartlett Island

**Nearest Boat Ramp** Same as staging areas

**Collection Points** Pretty Marsh Harbor: Primary purpose is exclusion, but aerial photo shows a building on the shoreline at the southern end of the strategy. Nearest address: 37 Tc North, Mount Desert

Birch Cove: Possibly from private boat launch on Bartlett Island. Southern piece of boom is exclusion only.

**Special Instructions** Caution with submerged pilings and cable area on Birch Cove

**Work Assignment** Place two 500 foot lengths of boom across inner Pretty Marsh Harbor.

Place two 400 foot lengths of boom from Birch Island to northern shoreline of Birch Cove. Note cable area on chart. Place a 500 foot length of boom from Birch Island to southern shoreline. Note submerged piles on chart.

## Recommended Equipment / Resources

**Length of Boom (feet)** 2300 **Type of Boom** 12" - 18" containment boom

**Recommended Equipment (Minimum)** Pretty Marsh Harbor:  
2 - anchor systems: 35 lb. Danforth or equivalent and line for 3:1 scope plus tag lines and buoys.  
2 - shoreside connections  
1 - vacuum truck or skimmer and storage  
2 - workboats with minimum 90 hp  
2 - boat operators  
4 - laborers

Birch Cove:  
2 - anchor systems: 35 lb. Danforth or equivalent and line for 3:1 scope plus tag lines and buoys.  
2 - shoreside connections  
1 - vacuum truck or skimmer and storage  
2 - workboats with minimum 90 hp  
2 - boat operators  
4 - laborers

Unless otherwise indicated, the boom length given is the distance measured on the chart. Actual length required may vary with conditions.

Last Desktop Validation: 1/16/2019

Last Field Visit

Last Field Test: