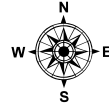
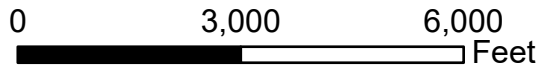


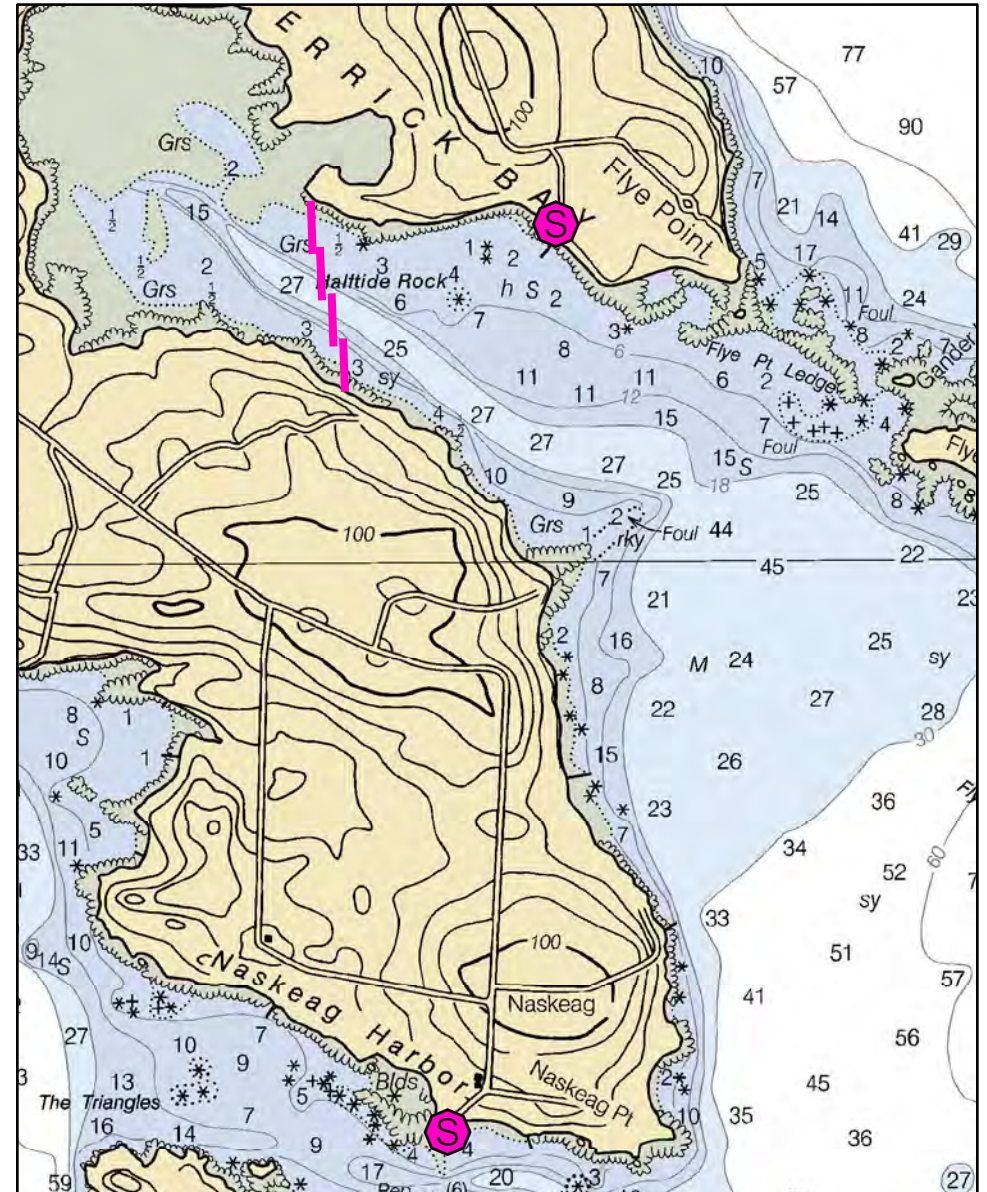
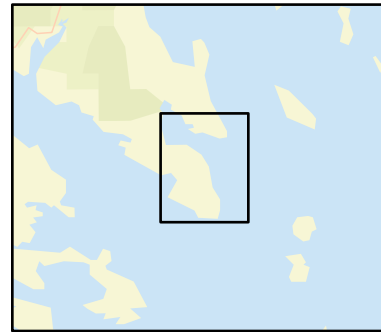
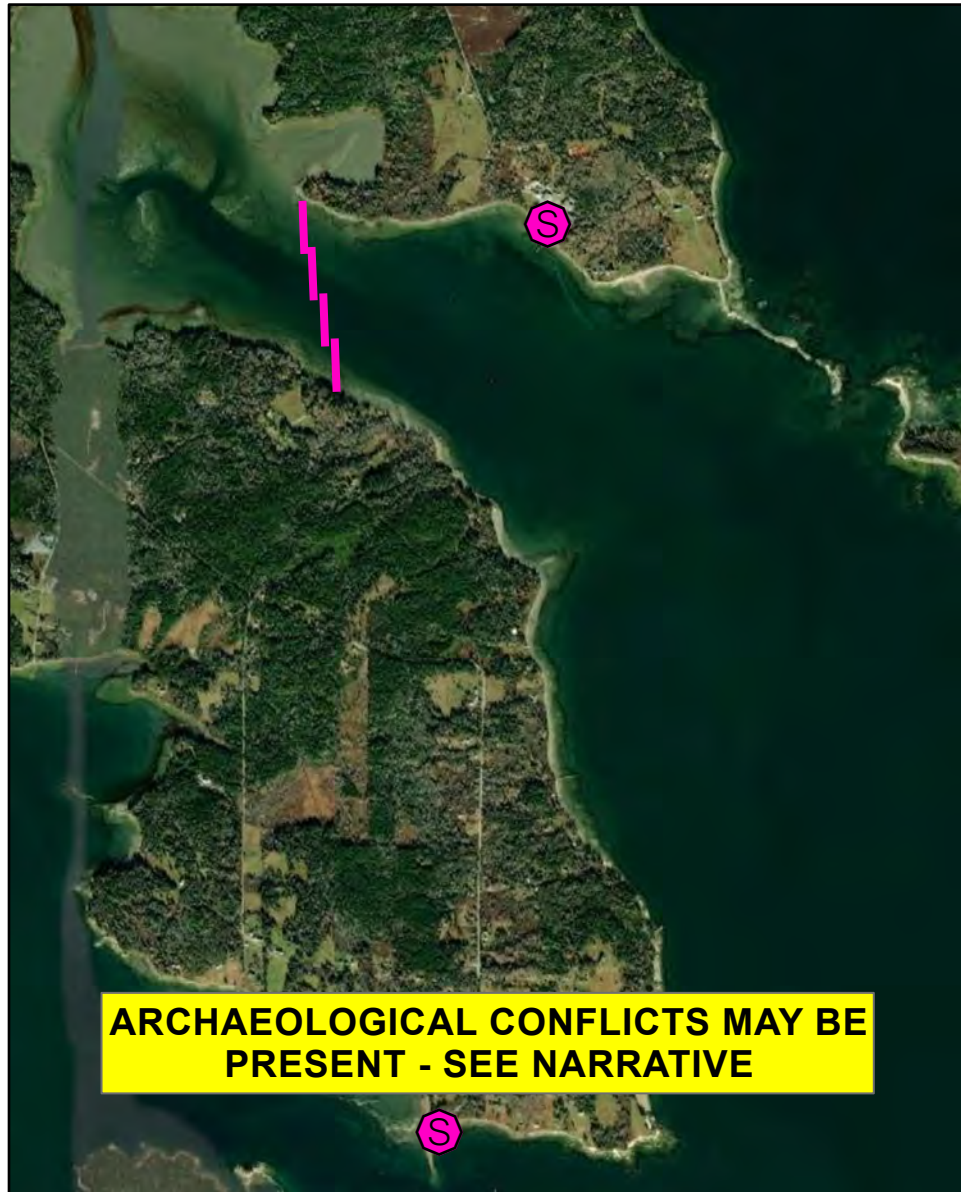
C-28-1

Herrick Bay

Brooklin, ME



Date printed: 9/10/2022 7:53 PM



C-28-1 Herrick Bay

Town	Brooklin	Port Region	Penobscot Bay
Latitude	44° 15.612' N	Longitude	68° 32.421' W
Approx. Tidal Range (feet)	10	NOAA Chart #	13316_1
Max Current (knots)	Flood	ESI Map #	27B, 27A
Source	Ebb	EVI Map #	60, 55, 59, 54
		DeLorme Map # (2019)	15 C5

Resources At Risk

ESI Primary Shoreline Type Exposed wave-cut platforms in bedrock, mud, or clay (2A)

ESI Secondary Shoreline Type Coarse grained sand beach (4)

Environmental Concerns Herrick Bay contains shorebird habitat, shellfish and marine worm beds and is used by rafting birds in fall.

Archaeological Conflicts No conflict as designed. Deviations from GRS design will require MHPC review. Contact MHPC at (207) 287-2132.

Strategy Information

Strategy Purpose To divert oil from upper Herrick Bay

Staging Areas Atlantic Boat Company, 355 Flye Point Rd, Brooklin has pier and ramp (probably part-tide). (207) 359-4658 for information / permission.
Naskeag Harbor has a firm gravel ramp used by commercial fisherman at Naskeag Point Road in Brooklin.

Site Access By boat from Atlantic Boat Company or Naskeag Point

Nearest Boat Ramp Atlantic Boat Company or Naskeag Point Road (see staging areas)

Collection Points Possibly from land at north end of boom on Flye Point. Aerial photography shows road leading to point.

Special Instructions Area is shallow and utilizes a lot of boom. Check on other possibly higher priorities before committing resources.

Work Assignment Place four 600 foot lengths of boom across Herrick Bay

Recommended Equipment / Resources

Length of Boom (feet) 2400 **Type of Boom** 12" to 18" containment boom

Recommended Equipment (Minimum)

- 6 - anchor systems: 35 lb. Danforth or equivalent and line for 3:1 scope plus tag lines and buoys.
- 2 - shoreside connections
- 1 - vacuum truck or skimmer and storage
- 2 - workboats with minimum 90 hp
- 2 - boat operators
- 4 - laborers

Unless otherwise indicated, the boom length given is the distance measured on the chart. Actual length required may vary with conditions.

Last Desktop Validation: 1/10/2019

Last Field Visit

Last Field Test: