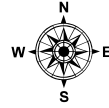


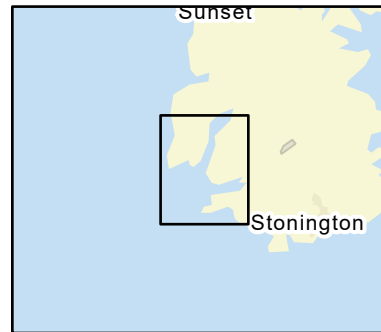
# C-23-1

## Crockett and Burnt Coves Deer Isle / Stonington, ME

0 1,000 2,000  
Feet

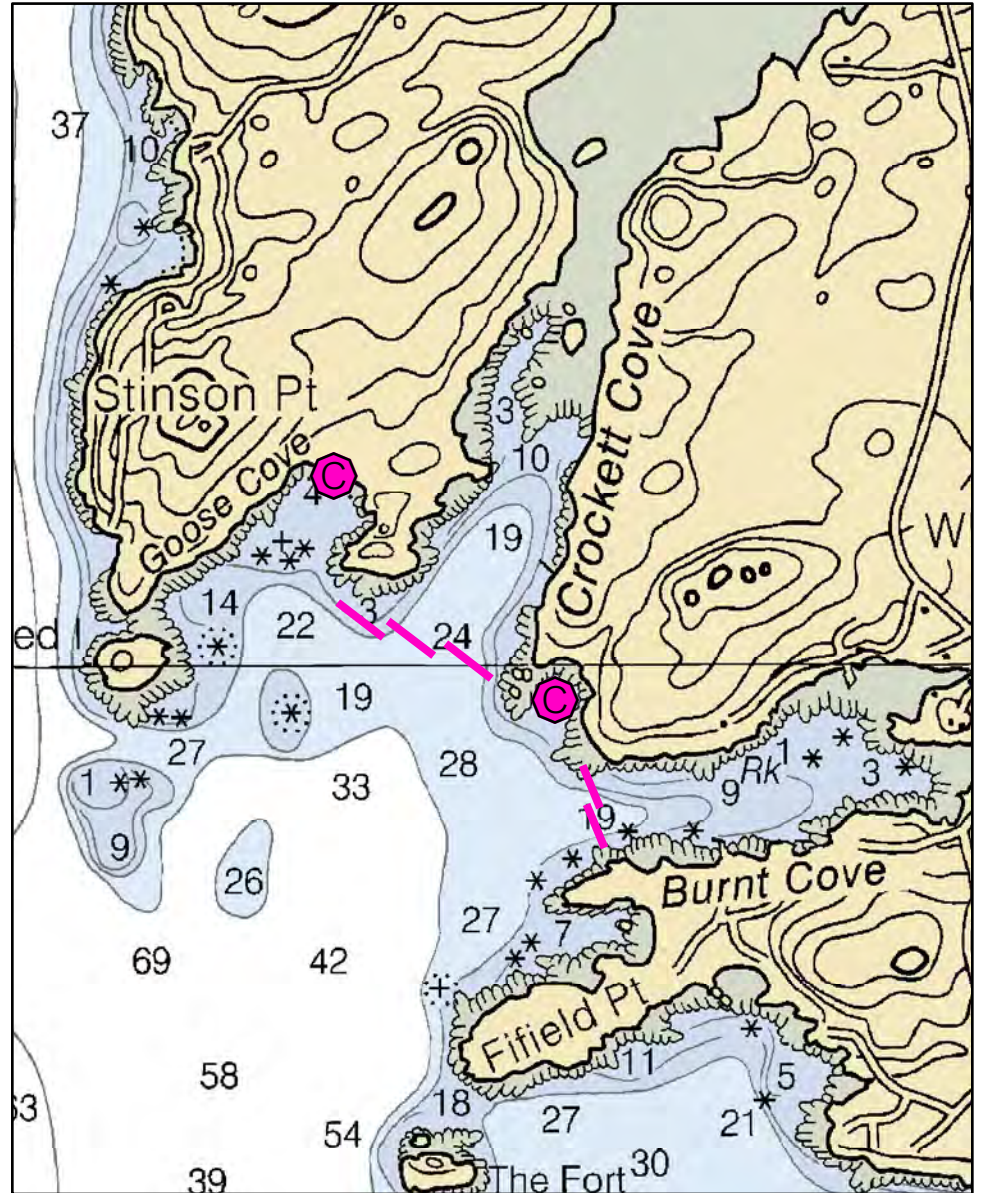


Date printed: 9/10/2022 7:53 PM



### Legend

Boat Launches	Staging Area
Collection Point	Water Treatment Intake
Permanent Mooring	Response Vessel
Skimmer	Vacuum Truck



Esri, HERE, Garmin, SafeGraph, METI/NASA, USGS, EPA, NPS, USDA, Maxar, NOAA

# C-23-1 Crockett and Burnt Coves

**Town** Deer Isle / Stonington

**Port Region** Penobscot Bay

**Latitude** 44° 9.9' N **Longitude** 68° 42.467' W

**NOAA Chart #** 13305\_1

**Approx. Tidal Range (feet)** 10

**ESI Map #** 28C, 28D

**Max Current (knots)** **Flood** > 1 knot **Ebb**

**EVI Map #** 53

**Source** Local knowledge estimate

**DeLorme Map # (2019)** 15 D3, E3

## Resources At Risk

**ESI Primary Shoreline Type** Exposed wave-cut platforms in bedrock, mud, or clay (2A)

**ESI Secondary Shoreline Type**

**Environmental Concerns** Crockett Cove: Tidal flats, shellfish beds, marine worm habitat, shorebird area and eelgrass. Burnt Cove: shellfish beds, eelgrass, shorebird area, lobster dealer.

**Archaeological Conflicts** None noted. Contact MHPC at (207) 287-2132 if archaeological items are discovered.

## Strategy Information

**Strategy Purpose** To exclude oil from Crockett and Burnt Coves

**Staging Areas** Stonington town dock, 1 High Street. May be possible to pull boom from Fifield Lobster Co., Fifield Point Road in Burnt Cove.

**Site Access** Rte. 1 to Rte. 15 to Stonington boat launch. Goose Cove: From Deer Isle village, right on Main St. and 3 miles to Goose Cove Road (Stinson Point)

**Nearest Boat Ramp** Stonington town dock

**Collection Points** Sand beach at Goose Cove Lodge is possible natural collection area.

**Special Instructions** Barred Island Preserve at mouth of Goose Cove is owned by Nature Conservancy.

**Work Assignment** Deploy two 500 foot lengths of boom across Burnt Cove and three 400 foot lengths of boom across Crockett Cove. Possible natural collection area at sand beach in Goose Cove (Goose Cove Lodge).

## Recommended Equipment / Resources

**Length of Boom (feet)** 2200 **Type of Boom** 12" - 18" containment boom

**Recommended Equipment (Minimum)**  
6 - anchor systems: 35 lb. Danforth or equivalent and line for 3:1 scope plus tag line with buoys.  
4 - shoreside connections.  
1 - vacuum truck or skimmer and storage  
2 - workboats with minimum 90 hp  
2 - boat operators  
4 - laborers

Unless otherwise indicated, the boom length given is the distance measured on the chart. Actual length required may vary with conditions.

Last Desktop Validation: 1/6/2019

Last Field Visit: 7/14/2011

Last Field Test: