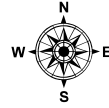
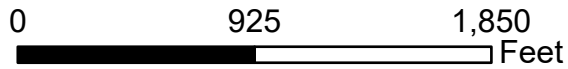
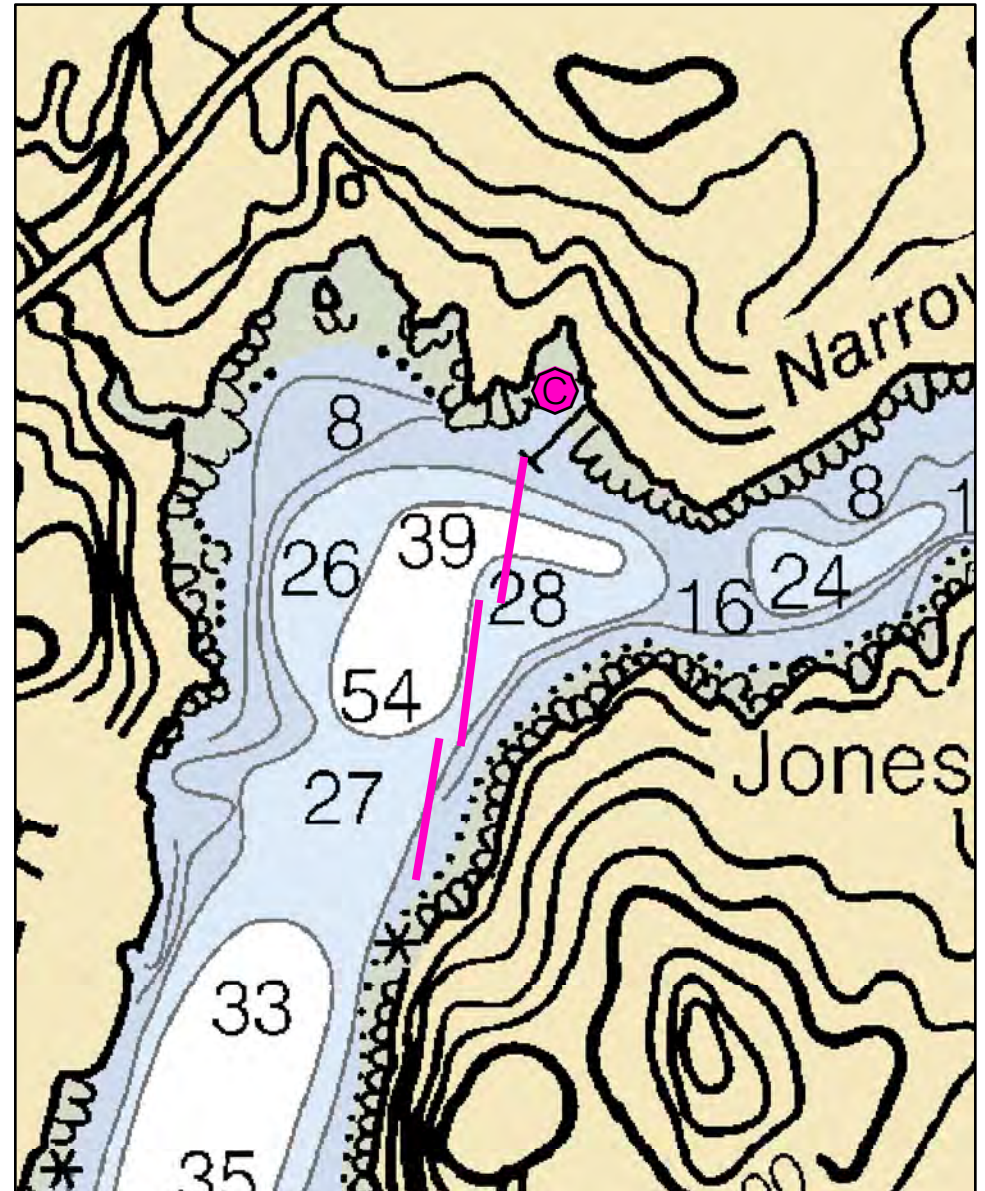
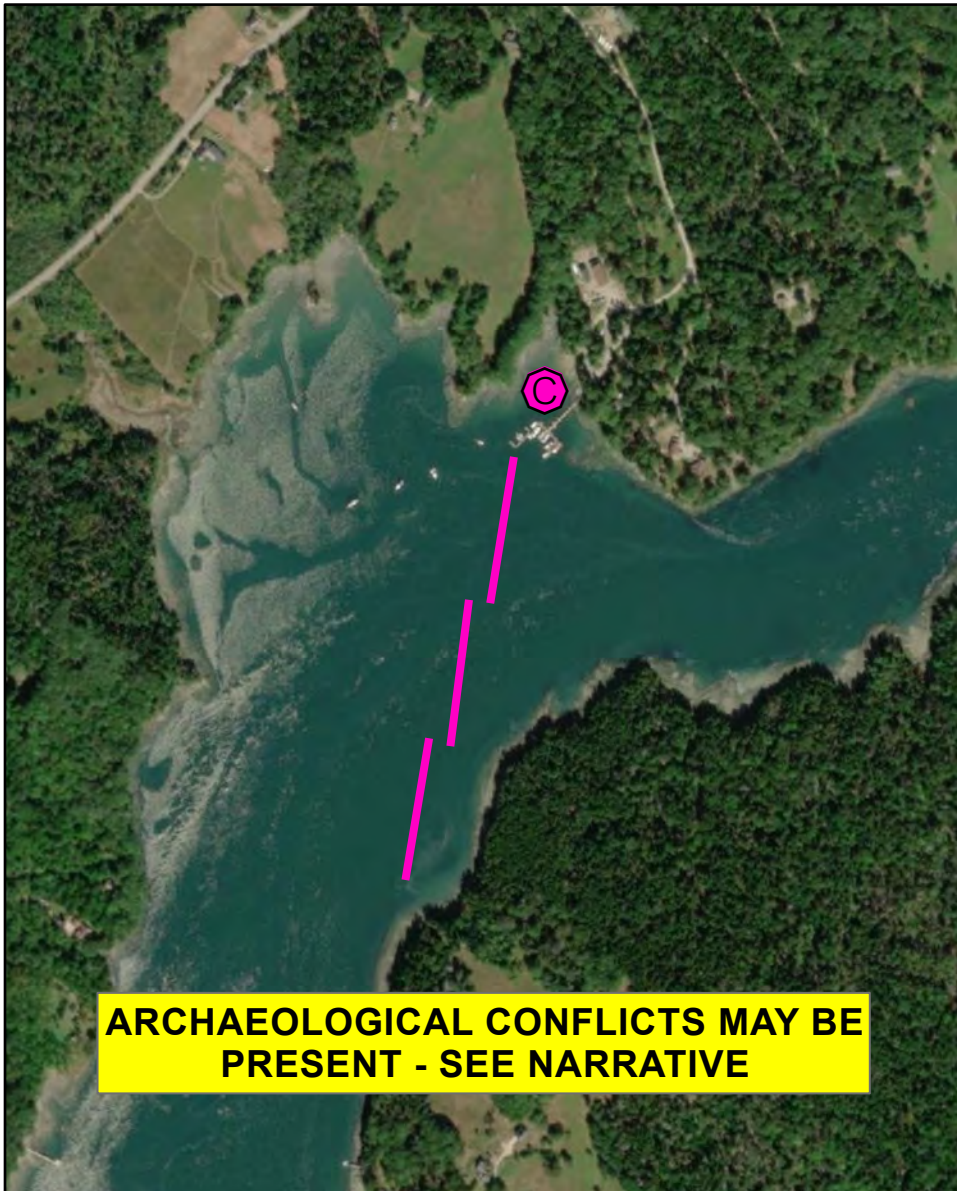


C-20-1

Bagaduce River Penobscot, ME



Date printed: 9/10/2022 7:52 PM



C-20-1 Bagaduce River

Town Penobscot

Latitude 44° 25.494' N **Longitude** 68° 45.719' W

Approx. Tidal Range (feet) 12

Max Current (knots) **Flood** see below **Ebb**

Source

Port Region Penobscot Bay

NOAA Chart # 13309_1

ESI Map # 23A

EVI Map # 65

DeLorme Map # (2019) 15 A2

Resources At Risk

ESI Primary Shoreline Type Mixed sand and gravel beaches (5)

ESI Secondary Shoreline Type

Environmental Concerns Upper Bagaduce River is sensitive habitat for many species: shellfish, shorebirds, diadromous fish, elver runs, and eelgrass. Several Bald Eagle nests and seal haul outs.

Archaeological Conflicts No conflict as designed. Deviations from GRS design will require MHPC review. Contact MHPC at (207) 287-2132.

Strategy Information

Strategy Purpose To divert oil from upper Bagaduce River

Staging Areas Castine Town Dock, Maine Maritime Academy or Seal Ledge Marina. No ramp at marina.

Site Access Use Castine Town Dock to launch. Collection area: from Route 3 at Orland, take Route 175 to Route 199. Follow 199 south to Seal Ledge Lane and marina.

Nearest Boat Ramp Castine Town dock

Collection Points Cove at Seal Ledge Marina

Special Instructions Current in Bagaduce Narrows can exceed 4 kts according to NOAA data. Keep boom in wider area before Narrows. Current from Castine Harbor to marina site is too strong for boom. Many eddies and confused currents in Upper Bagaduce. Use caution.

Work Assignment Use three 500 foot lengths of boom to divert oil to cove at Seal Ledge Marina in Penobscot.

Recommended Equipment / Resources

Length of Boom (feet) 1500

Type of Boom 12" to 18" containment boom

Recommended Equipment (Minimum)
4 - anchor systems: 35 lb. Danforth or equivalent and line for 3:1 scope plus tag line with buoys.
2 - shoreside connections.
1 - vacuum truck or skimmer and storage
2 - workboats with minimum 90 hp
2 - boat operators
4 - laborers

Unless otherwise indicated, the boom length given is the distance measured on the chart. Actual length required may vary with conditions.

Last Desktop Validation: 1/5/2012

Last Field Visit: 7/15/2011

Last Field Test: