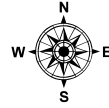
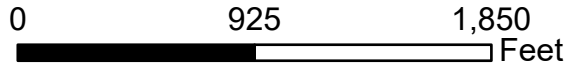
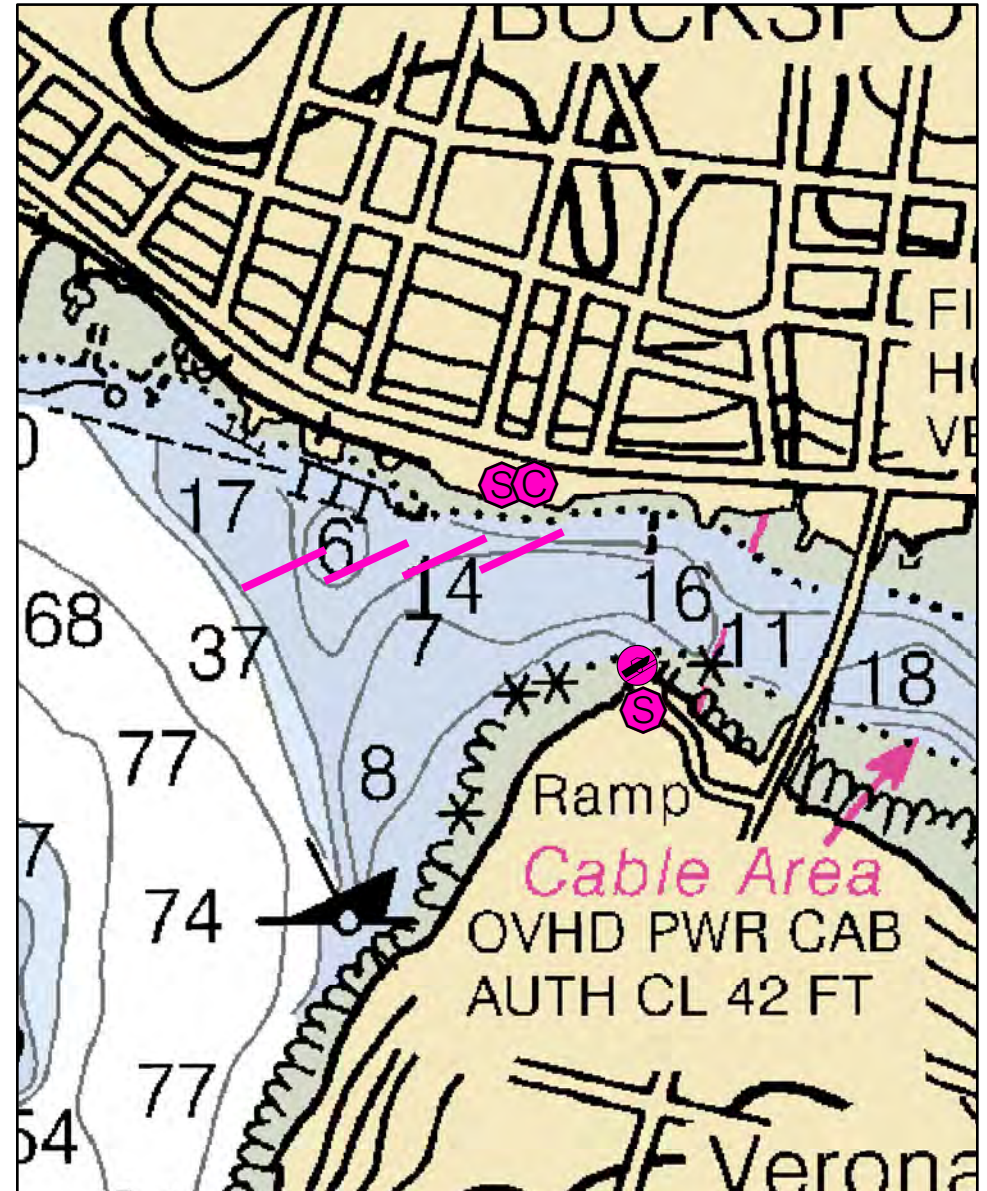
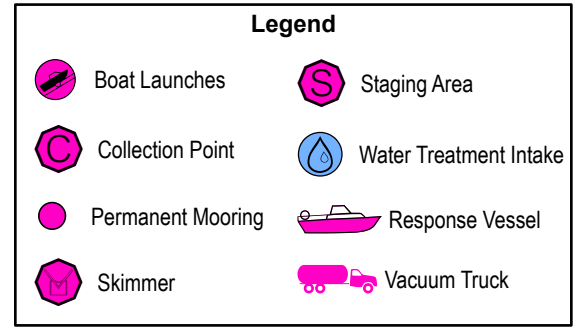
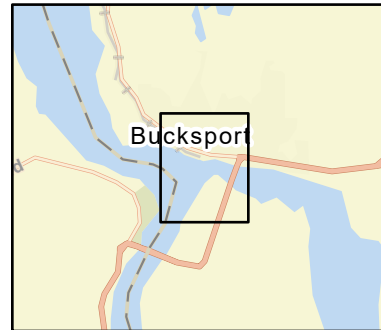


C-17-1

Penobscot River / NE Channel, Bucksport (ebb)
Bucksport / Orland, ME



Date printed: 9/10/2022 7:52 PM



C-17-1 Penobscot River / NE Channel, Bucksport (ebb)

Town Bucksport / Orland **Port Region** Penobscot Bay
Latitude 44° 34.201' N **Longitude** 68° 47. 661' W **NOAA Chart #** 13309_1
Approx. Tidal Range (feet) 11 **ESI Map #** 16B, 16C
Max Current (knots) **Flood** 1.4 **Ebb** 2.5 **EVI Map #** 72
Source Flood measured / ebb est. **DeLorme Map # (2019)** 23 E2

Resources At Risk

ESI Primary Shoreline Type Sheltered riprap (8C)

ESI Secondary Shoreline Type

Environmental Concerns Strategy protects Eastern Channel, which has shorebird areas, mudflats, marine worm habitat and bald eagle nesting sites.

Archaeological Conflicts No conflict as designed. Deviations from GRS design will require MHPC review. Contact MHPC at (207) 287-2132.

Strategy Information

Strategy Purpose To prevent oil originating upriver from entering eastern channel of the Penobscot River on an ebb tide

Staging Areas Same as site access

Site Access Verona Island boat ramp, Town of Bucksport dock, Bucksport Town Hall parking lot. Nearest address: 50 Main St., Bucksport, ME

Nearest Boat Ramp Verona Island

Collection Points Parking lot behind Bucksport Town Hall.

Special Instructions River dominated by downstream flow. Flood tide lasts only about 2 hours, otherwise flow is downstream, with ebb much stronger than flood.

Work Assignment Deploy four 300 foot sections of boom from anchor point in mid channel (68 47.765 W, 44 34.208 N) to vicinity of parking lot behind Bucksport Town Hall on northerly side of river. Use 40 lb. anchors.

Recommended Equipment / Resources

Length of Boom (feet) 1200 **Type of Boom** 12" - 18" containment boom

Recommended Equipment (Minimum)
5 - anchor systems: 40 lb. Danforth or equivalent and line for 3:1 scope plus tag lines and buoys.
1 - shoreside connection
1 - vacuum truck or skimmer and storage
2 - workboats with minimum 90 hp
2 - boat operators
4 - laborers

Unless otherwise indicated, the boom length given is the distance measured on the chart. Actual length required may vary with conditions.

Last Desktop Validation: 10/26/2018

Last Field Visit: 10/25/2011

Last Field Test: 10/25/2011