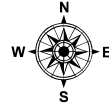


C-02-1

Meduncook River / Back River Friendship / Cushing, ME

0 2,000 4,000 Feet

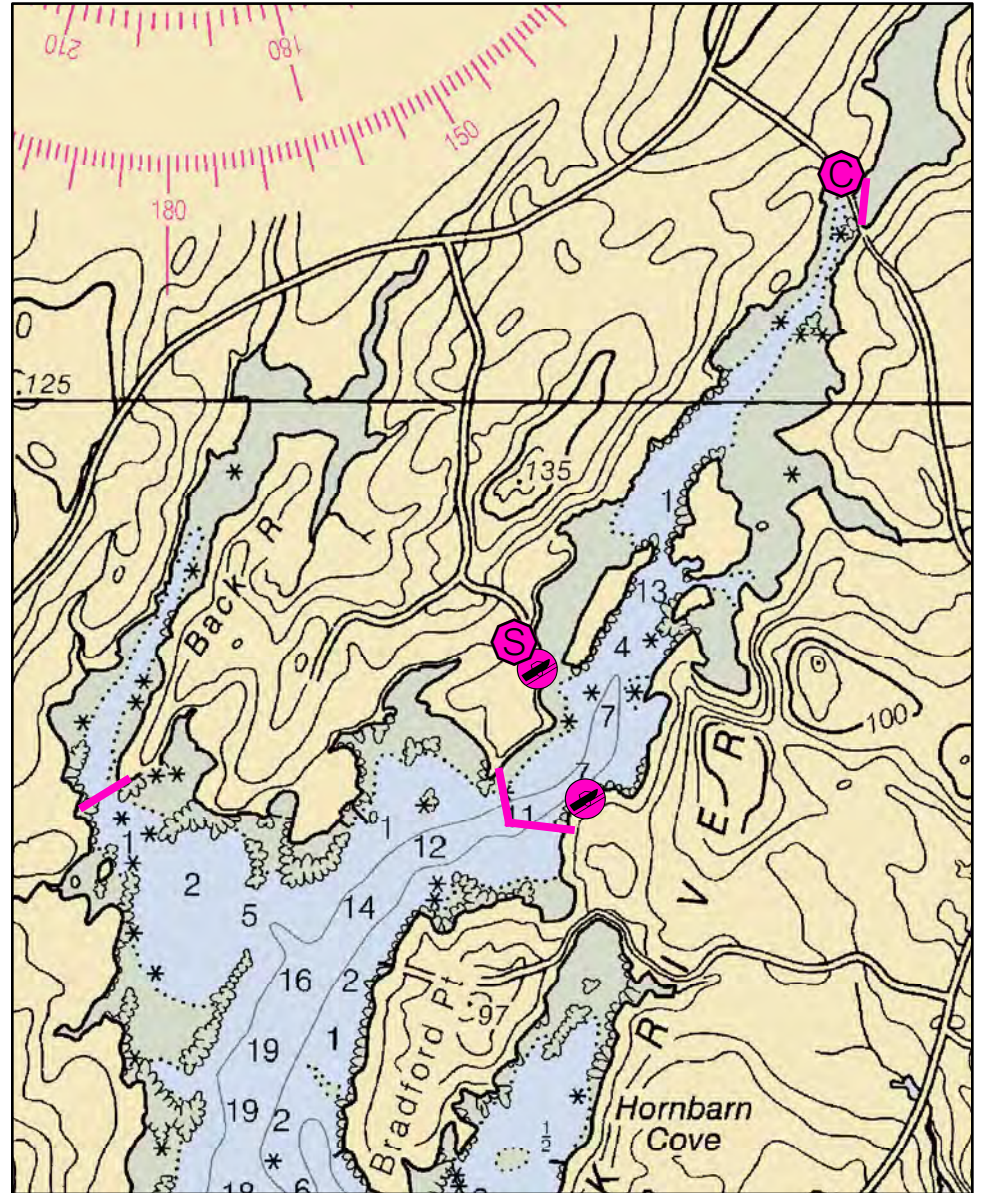


Date printed: 9/10/2022 7:52 PM



Legend

	Boat Launches		Staging Area
	Collection Point		Water Treatment Intake
	Permanent Mooring		Response Vessel
	Skimmer		Vacuum Truck



C-02-1 Meduncook River / Back River

Town	Friendship / Cushing	Port Region	Penobscot Bay
Latitude	43° 59.62' N	Longitude	69° 18.175' W
Approx. Tidal Range (feet)	10	NOAA Chart #	13301_1
Max Current (knots)	Flood 1 - 2 knots	ESI Map #	38A, 38C
	Ebb	EVI Map #	35
Source	Estimated	DeLorme Map # (2019)	8 B1

Resources At Risk

ESI Primary Shoreline Type	Vegetated low banks (9B)
ESI Secondary Shoreline Type	Exposed tidal flats (7)

Environmental Concerns Sheltered tidal flats, shellfish beds, shorebird and wading bird habitat, eelgrass, marine worms and salt marsh in upper rivers

Archaeological Conflicts None noted. Contact MHPC at (207) 287-2132 if archaeological items are discovered.

Strategy Information

Strategy Purpose	To exclude oil from Back and Meduncook Rivers
Staging Areas	Wadsworth Point boat ramp, Wadsworth Point Road, Friendship
Site Access	Wadsworth Point Road, Friendship
Nearest Boat Ramp	Wadsworth Point boat ramp, Wadsworth Point Road, Friendship
Collection Points	Primary exclusion. If necessary, collect from north side of bridge on Route 97.
Special Instructions	
Work Assignment	Deploy 550' and 450' lengths of boom from both sides at entrance to Meduncook River in chevron formation. Deploy 500 feet of boom at entrance to Back River. Deploy 250 of boom at the salt marsh located east of Route 97'.

Recommended Equipment / Resources

Length of Boom (feet)	1750	Type of Boom	12" to 18" containment boom
Recommended Equipment (Minimum)	1 - anchor systems: 35 lb. Danforth or equivalent and line for 3:1 scope plus tag line with buoy 6 - shoreside connections 2 - workboats with minimum 90 hp 2 - boat operators 4- laborers 1 - skimmer and storage if needed		

Unless otherwise indicated, the boom length given is the distance measured on the chart. Actual length required may vary with conditions.

Last Desktop Validation: 9/13/2020

Last Field Visit:

Last Field Test: