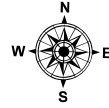
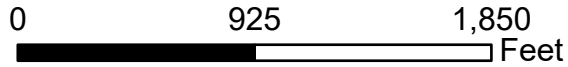
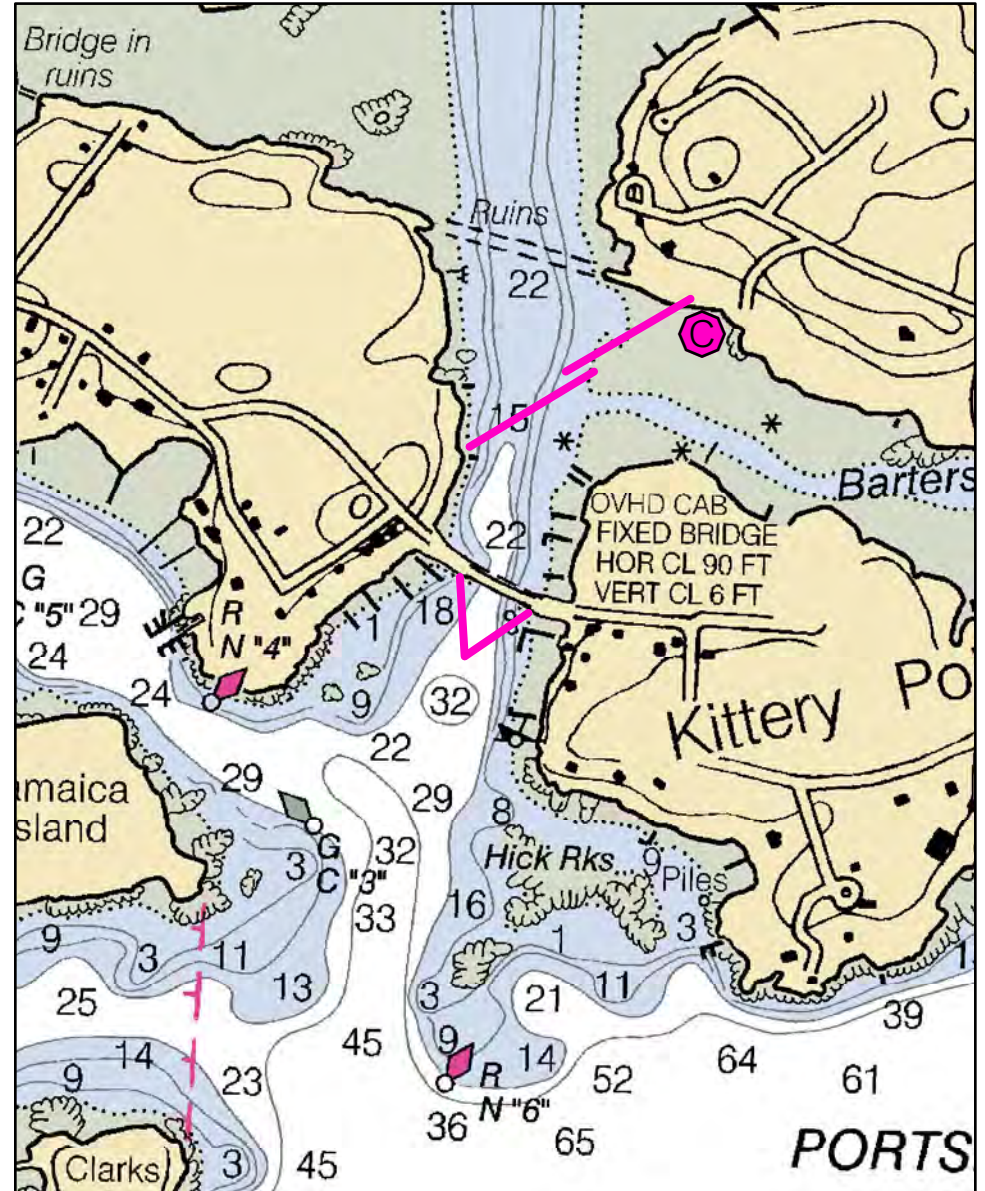
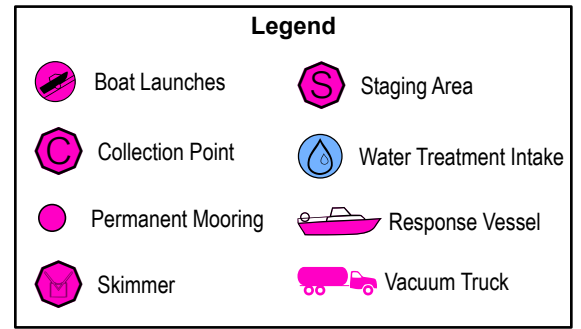
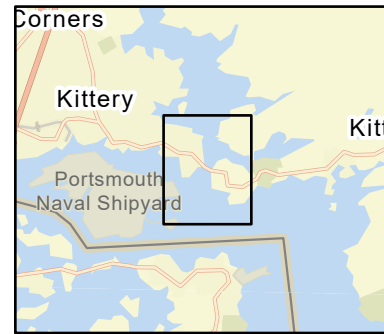


A-29-1

Spruce Creek Kittery, ME



Date printed: 9/10/2022 7:50 PM



A-29-1 Spruce Creek

Town Kittery, ME

Latitude 43° 05.120 N **Longitude** 70° 43.056 W

Approx. Tidal Range (feet) 9

Max Current (knots) **Flood** 0.80 **Ebb** 1.6

Source Measured

Port Region New Hampshire and Southern Maine

NOAA Chart # 13283_1

ESI Map # 54D

EVI Map # 2

DeLorme Map # (2019) 1 B4

Resources At Risk

ESI Primary Shoreline Type Sheltered tidal flats (9A)

ESI Secondary Shoreline Type Riprap (6B)

Environmental Concerns Extensive mudflats with shellfish and marine worm habitat. Vulnerable shorebird area. Elver run. American eel, horseshoe crabs

Archaeological Conflicts ME: None noted. Contact MHPC at (207) 287-2132 if archaeological items are discovered.

NH: Contact NHDHR at (603)-271-3484

Strategy Information

Strategy Purpose Divert oil from reaching upper Spruce Creek

Staging Areas Access at:
(1) Traip Academy boat launch, 12 Williams Ave., Kittery (limited parking)
(2) Kittery town boat launch, Pepperell Road, Kittery (not all tide)
(3) Pierce Island boat launch, Portsmouth
(4) PNSY (with Navy permission / credentialing)

Site Access By boat for primary inner strategy or by Whipple Road (Route 103) for outer chevron.

Nearest Boat Ramp Same as staging

Collection Points North side of Barter's Creek at end of cascade if possible

Special Instructions Max current given is for inside Route 103 bridge. Current outside bridge is significantly faster.

Work Assignment Primary strategy is inside the bridge. Place a cascade of two 600 foot long lengths of boom across Spruce Creek to the north side of Barters Creek.
For secondary strategy, consider use of Current Buster or chevron in mid channel using two 300 foot lengths of boom as shown on map. This has succeeded under ideal conditions, but has also been tested without success several times.

Recommended Equipment / Resources

Length of Boom (feet) 1200 (primary), 600 (secondary)

Type of Boom 12" - 18" containment boom

Recommended Equipment (Minimum) For primary strategy:
2 - anchor systems: 35 lb. Danforth or equivalent and line for 3:1 scope plus tag line with buoys.
2 - shoreside connections.
1 - skimmer and storage
2 - workboats with minimum 90 hp
2 - boat operators
4 - laborers

For secondary strategy:
2 - anchor systems: 35 lb. Danforth or equivalent and line for 3:1 scope plus tag line with buoys. Use both anchors at apex of chevron.
2 - shoreside connections.
1 - 2 vacuum trucks or skimmers and storage
1 - workboats with minimum 90 hp
1 - boat operator, 2 laborers

Unless otherwise indicated, the boom length given is the distance measured on the chart. Actual length required may vary with conditions.

Last Desktop Validation: 10/25/2018

Last Field Visit: 9/4/2003

Last Field Test: 10/1/2014