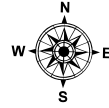
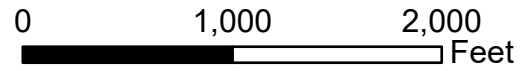
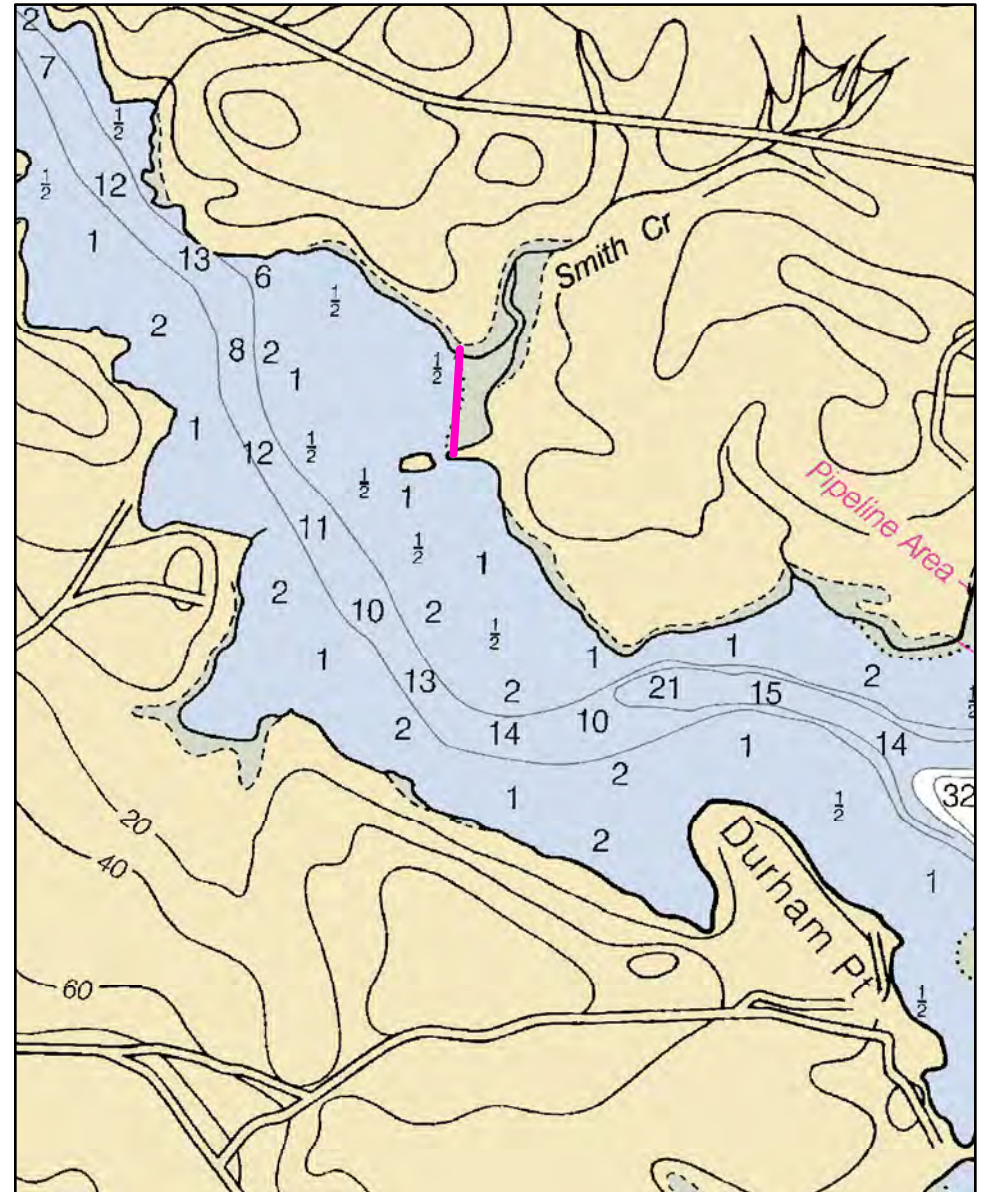
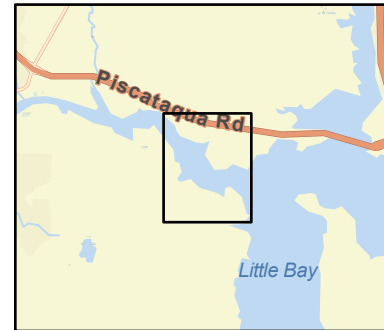


A-19-2

Smith Creek on Oyster River Durham, NH



Date printed: 9/10/2022 7:49 PM



A-19-2 Smith Creek on Oyster River

Town Durham, NH

Latitude 43° 07.658' N **Longitude** 70° 52.632' W

Approx. Tidal Range (feet) 9

Max Current (knots) Flood Ebb

Source

Port Region New Hampshire and Southern Maine

NOAA Chart # 13285_1

ESI Map # 55B

EVI Map # N/A

DeLorme Map # (2019) 30 (NH); 1 B2 (ME)

Resources At Risk

ESI Primary Shoreline Type Sheltered tidal flats (9A)

ESI Secondary Shoreline Type

Environmental Concerns Salt marsh and shellfish habitat in Smith Creek

Archaeological Conflicts

Strategy Information

Strategy Purpose To exclude oil from Smith Creek

Staging Areas Jackson's Landing boat ramp, 10 Old Piscataqua Road, Durham or from Fox Point, Newington (summer only)

Site Access By boat from Fox Point Newington (summer only) or Jackson's Landing boat ramp, 10 Old Piscataqua Road, Durham. A shallow draft boat capable of putting a crew ashore for tying off the boom ends is necessary.

Nearest Boat Ramp Fox Point, Newington 1.1 miles, or Jackson's Landing boat launch, 10 Old Piscataqua Road, Durham 1.9 miles over water

Collection Points N/A

Special Instructions

Work Assignment Deploy 550 feet of containment boom leaving enough slack to allow for low tide or adjust as necessary. Attach one end to the rocky point on the east side at 43 07.616 N and 70 52.640 W. Attach the western end to a tree at the cobbled shore at 43 07.698 W and 70 52.663 W. Boom can be towed to site from a PRC boom barge or a boom reel trailer driven over the road and parked at Fox Point in Newington.

Recommended Equipment / Resources

Length of Boom (feet) 600

Type of Boom Harbor Boom

Recommended Equipment (Minimum)
2 - shoreside connections
1 - shallow draft boat
1 - boat operator
2 - laborers

Unless otherwise indicated, the boom length given is the distance measured on the chart. Actual length required may vary with conditions.

Last Desktop Validation: 9/13/2020

Last Field Visit: 8/23/2005

Last Field Test: 8/23/2005