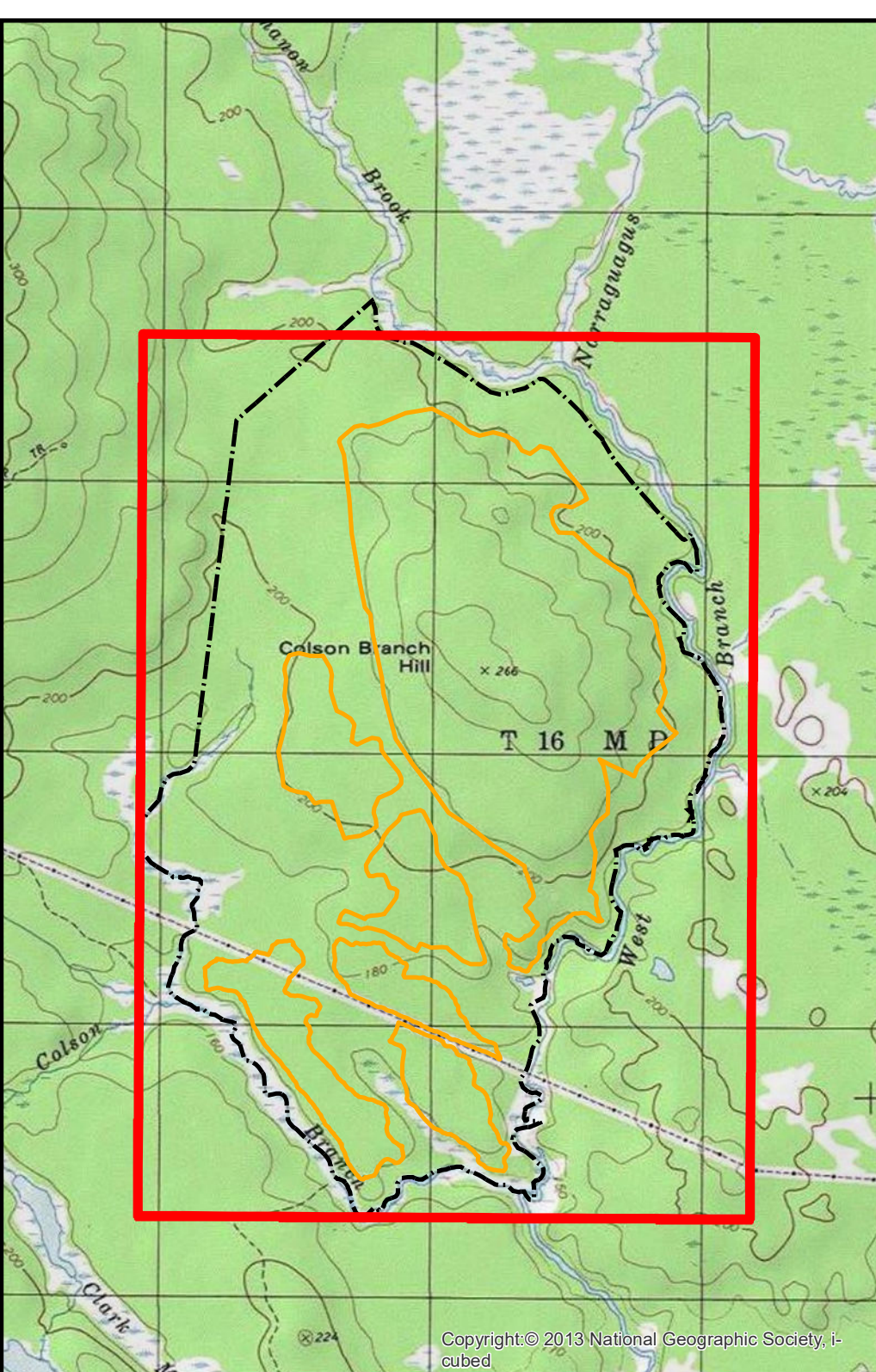


Legend

- Pip-Can_Pts (1-10 Plants)
- Pip-Can Area**
- Density
 - HIGH
 - MEDIUM
 - LOW
- AOL_TRS
- WETLAND BOUNDARY_ARC_2019**
- Reconnaisance Wetland
- TYPE**
- RECON
- PEM1E
- PFO1E
- PSS1E
- DELIN_STREAM_ARC
- NHD_Streams

Index Map Scale:
1 inch = 250 feet
1:3,000

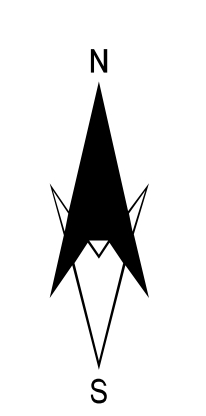


1.) RARE, THREATENED & ENDANGERED SPECIES SURVEYS COMPLETED DURING 2019 BY WEBER ECOLOGICAL SERVICES & ATLANTIC RESOURCE CO. LL
 2.) BOUNDARIES LOCATED USING SUBMETER GPS
 3.) RESOURCE DATA IN NAD83 UTM ZONE 19-US FEET. SOURCE:
 1.) ORTHOIMAGERY-ESRI ARCGIS ONLINE
 2.) USGS TOPO QUADS- ESRI ARCGIS ONLINE USA TOPO MAPS
 3.) BASE SURVEY PROVIDED BY PLISGA & DAY, ACHERON ENGINEERING



**3 RIVERS PROJECT
 THREE RIVERS SOLAR POWER, LLC
 T-16 MD, HANCOCK COUNTY, MAINE**

1 inch = 250 feet



**RTE MAP
 PROGRESS PRINT
 DATE: SEPTEMBER 09, 2019**