

B-30-2

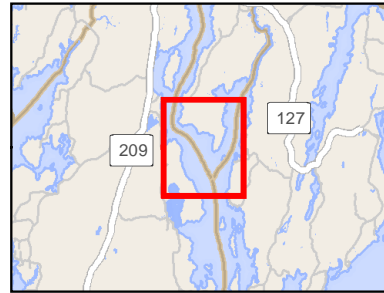
Back River - Spill from Upriver

Arrowsic / Georgetown

0 1,000 2,000
Feet



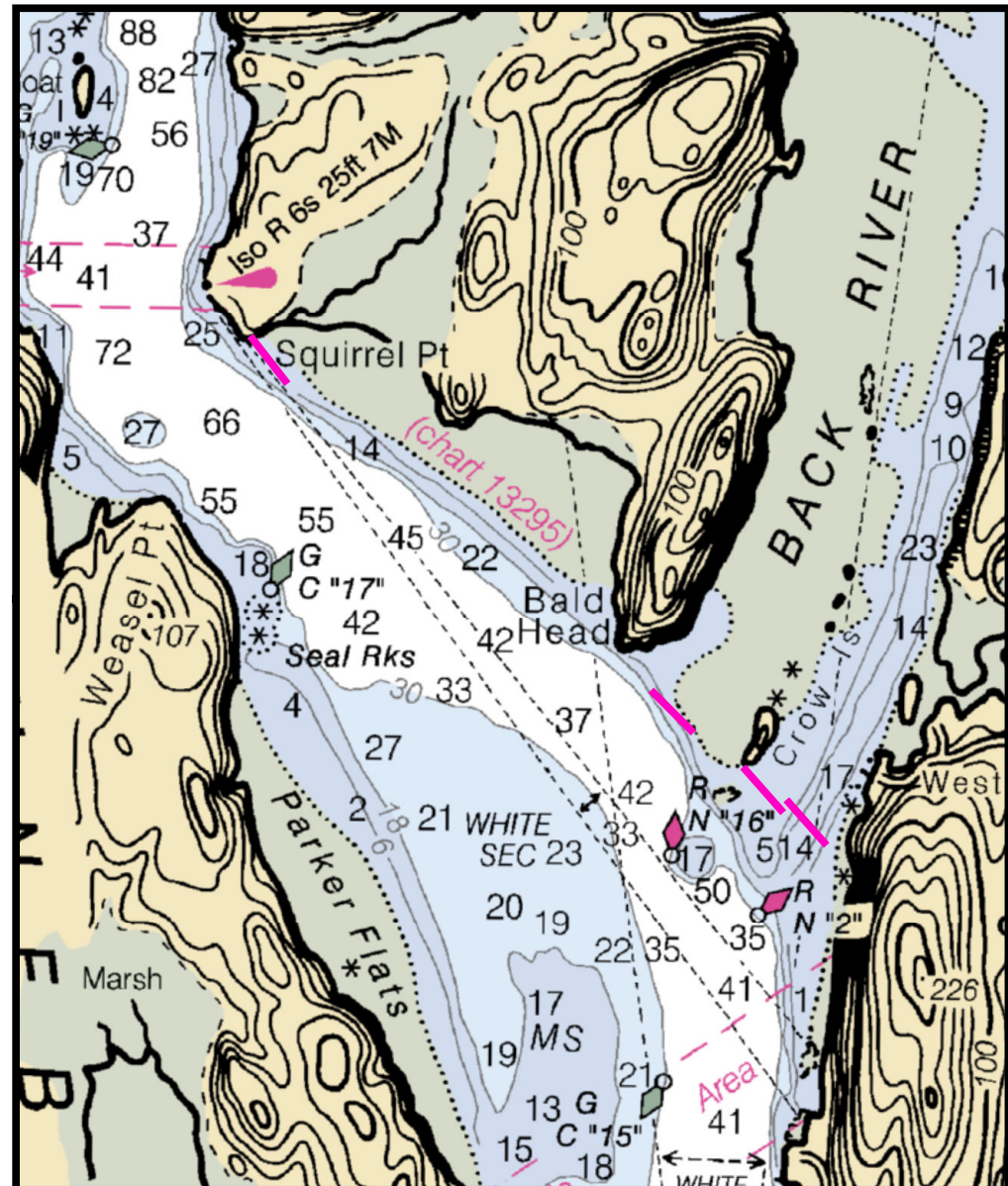
Printed: 4/11/2018



Legend	
	Boat Launch
	Containment boom
	Collection point
	Staging area
	Response vessel
	Collection point
	Tide slide
	Vac truck
	Skimmer
	Command post



Source: Esri, DigitalGlobe, GeoEye, Earthstar Geographics, CNES/Airbus DS, USDA, USGS, AeroGRID, IGN, and the GIS User Community



Back River - Spill from Upriver

Town Arrowsic / Georgetown

Port Region Casco Bay

Latitude 43° 48.154' N **Longitude** -69° 46.733

Strategy B-30-2

NOAA Chart # 13293 **ESI Map #** 46A

EVI Map # 19

Resources At Risk

ESI Shoreline Type(s) Exposed wave cut platforms (bedrock, mud, clay)

Environmental Concerns Saltmarsh, shorebird and waterfowl habitat, diadromous fish, rare plants

Strategy Information

Strategy Purpose To exclude / deflect oil from Back River and Squirrel Point marsh

Work Assignment Deploy one 500 foot section of boom at Squirrel Point to deflect oil away from marsh. Place a second 500 foot section of boom between Crow's Island and Bald Head to deflect from Back River. Place two additional 500 foot sections of boom across the main channel of Back River.

Staging Areas Kennebec River boat launch, Fiddler's Reach Road, Phippsburg

Site Access By water

Nearest Boat Ramp Kennebec River boat launch, Fiddler's Reach Road, Phippsburg

Collection Points N/A

Approx. Tidal Range (feet) 9

Max Current (knots) **Flood** **Ebb** **Source**

Special Instructions

Recommended Equipment / Resources

Length of Boom (feet) 1000 **Type of Boom** 12" - 18" collection boom

Recommended Equipment (Minimum)

- 6 - anchor systems: 35 lb. Danforth or equivalent and line for 3:1 scope plus tag line with buoy.
- 2 - shoreside connections
- 2 - workboats with minimum 90 hp
- 2 - boat operators
- 4 - laborers

Unless otherwise indicated, the boom length given is the distance measured on the chart. Actual length required may vary with conditions.