

# A-37-1

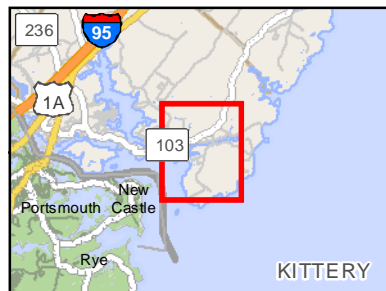
## Chauncey Creek Entrance

Kittery, ME

0 1,050 2,100  
Feet



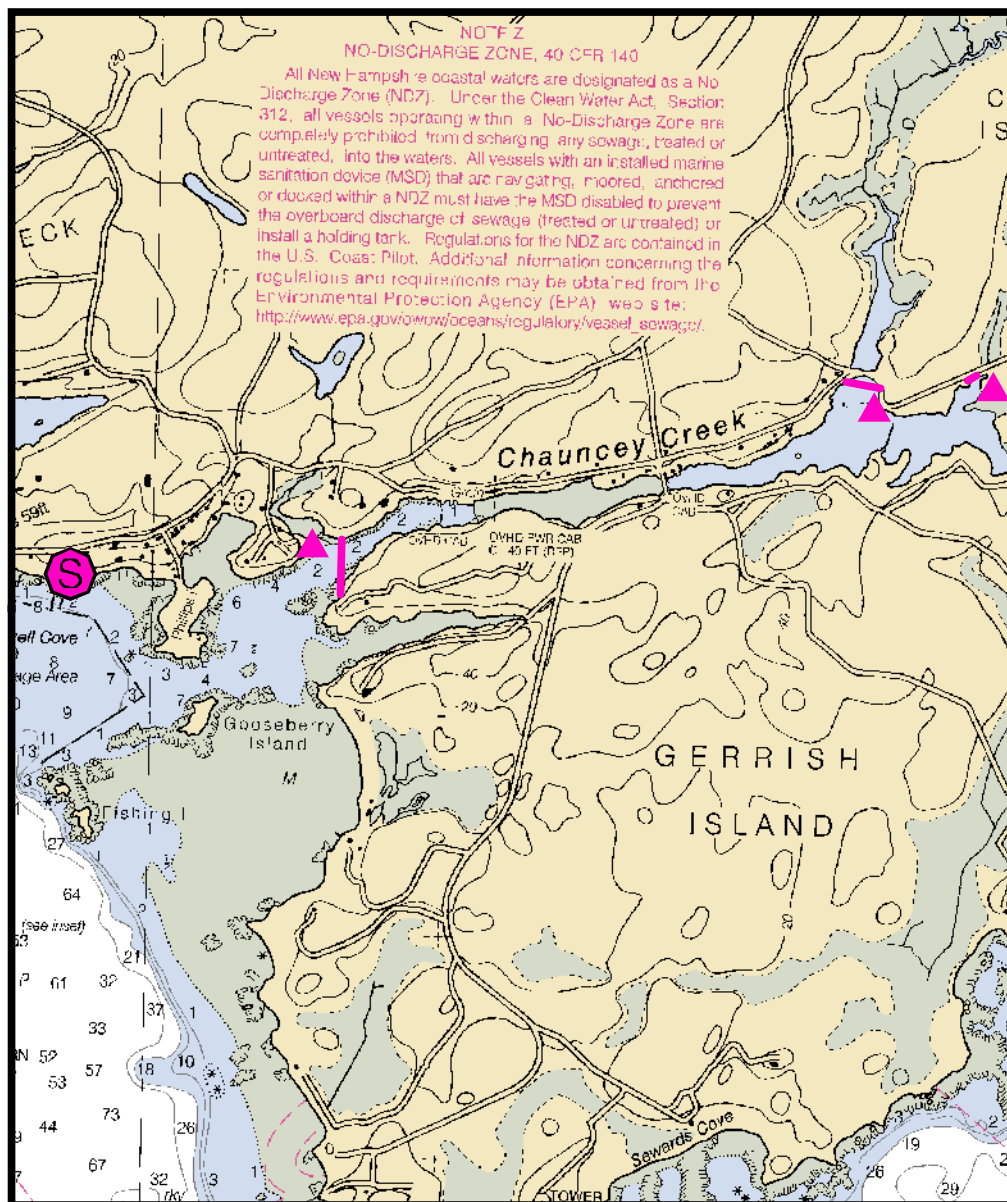
Printed: 1/23/2018



Legend	
	Boat Launch
	Containment boom
	Collection point
	Staging area
	Response vessel
	Collection point
	Tide slide
	Vac truck
	Skimmer
	Command post



Source: Esri, DigitalGlobe, GeoEye, Earthstar Geographics, CNES/Airbus DS, USDA, USGS, AEX, Getmapping, Aerogrid, IGN, IGP, swisstopo, and the GIS User Community



# Chauncey Creek Entrance

**Town** Kittery, ME

**Port Region** New Hampshire and Southern Maine

**Latitude** 43 04.946 N **Longitude** 70° 41.673 W

**Strategy** A-37-1

**NOAA Chart #** 13283\_1 **ESI Map #** 54C, 54D

**EVI Map #** 3

## Resources At Risk

**ESI Shoreline Type(s)** Exposed tidal flats  
Exposed rocky shores

**Environmental Concerns** Mudflats and marshes, saltmarsh sparrow, rare turtles and amphibians, connection to Rachel Carson National Wildlife Refuge.

## Strategy Information

**Strategy Purpose** To exclude oil from Chauncey Creek and Rachel Carson National Wildlife Refuge.

**Work Assignment** Primary: Place 500 feet of boom across mouth of Chauncey Creek.

Secondaries: (1) Place 300 feet of harbor boom across creek downstream of culvert at Chauncey Creek Rd / Cutts Island Lane. (2) Place boom or plywood across second smaller culvert at Seapoint Road.

**Staging Areas** (1) Traip Academy boat launch, 12 Williams Ave., Kittery (limited parking)  
(2) Kittery town boat launch, Pepperell Road, Kittery (not all tide)  
(3) Pierce's Island boat launch, Portsmouth  
(4) PNSY (with Navy permission / credentialing)

**Site Access** By boat for mouth of Chauncey Creek. Via Chauncey Creek Road for upstream culverts.

Nearest address for upstream areas: 5 Seapoint Road, Kittery, ME

**Nearest Boat Ramp** Same as staging areas

**Collection Points** At creek mouth if possible. Upstream at road crossings.

**Approx. Tidal Range (feet)** 9

**Max Current (knots)** **Flood** **Ebb** **Source**

## Special Instructions

## Recommended Equipment / Resources

**Length of Boom (feet)** 500 (primary), 300 (secondaries)

**Type of Boom** 12" - 18" containment boom

**Recommended Equipment (Minimum)** For primary strategy:  
2 - shoreside connections.  
1 - skimmer and storage  
1 - workboats with minimum 90 hp  
1 - boat operators  
2 - laborers

Cutts Island Lane:  
2 - shoreside connections.  
1 - 2 vacuum trucks or skimmers and storage  
1 - workboats with minimum 90 hp  
1 - boat operators  
2 - laborers

Seapoint Road:  
2 - shoreside connections  
1 - vehicle with boom  
2 - laborers

Unless otherwise indicated, the boom length given is the distance measured on the chart.  
Actual length required may vary with conditions.

**Revised** 10/25/2017

**Last Field Tested** 9/25/2003