



## CLOVER MITE

*Bryobia praetiosa*

### INTRODUCTION

Clover mites are plant feeders that occasionally invade homes. These mites do not attack people, and although vast numbers of them can enter homes, they will not reproduce under indoor conditions and will perish shortly of their own accord. Since the conclusion of World War II, the mite has become more common as a household pest. This increase in activity may be related in some way to an increased use of lawn fertilizers. The soil nutrient level or plant vigor and the proximity of the lawn to the house are factors that appear to govern the incidence of infestation.

### DESCRIPTION

Adult clover mites are one of the larger mites that infest plants. They are 0.75 mm long, reddish or greenish in color, and have a greatly elongated first pair of legs (Fig. 1). Featherlike plates or scales are sparsely arranged on the abdomen. The mites are frequently encountered on windowsills on the sunny side of homes and will move about at a relatively rapid pace.

### LIFE HISTORY

The clover mite is a parthenogenetic species that will overwinter in any dry protected location chiefly in the egg stage; however, it can be found in all stages. The overwintering eggs appear in the cracks and crevices of concrete sidewalks, under the bark of trees, and between the walls of buildings, and often can be found in vast numbers within these confines. The clover mite adults will become active as soon as the temperature rises above freezing. The overwintering eggs hatch early in the spring (approximately April 1, or when temperatures are greater than 45°F) and typically will complete only one generation before they aestivate (a type of warm weather hibernation) for the summer. Another generation usually is completed in the fall.

It is during the spring, however, that the mites become the greatest nuisances to homeowners. As early as mid-January, in southeastern Pennsylvania, warm weather spells can produce activity from overwintering mites. Mites located in the vicinity of buildings may climb the exterior walls and gain entrance around windows or doors. If the mites are overwintering under the building siding

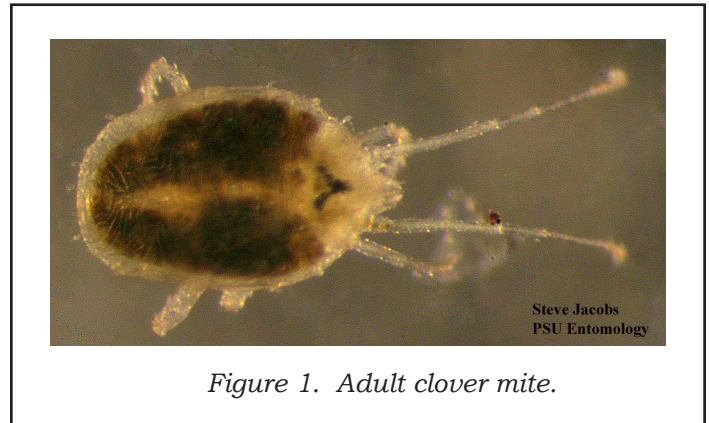


Figure 1. Adult clover mite.

or within the wall voids, they may become active and enter the living areas rather than exiting to the outside.

### MANAGEMENT

Control can be achieved by applying a spray of one of the registered insecticides to the exterior of the house up to the bottom of the first windows, as well as to all shrubs and to the lawn up to 15 feet from the structure. When using a pesticide for this type of control, be sure that the material is labeled for the “site” (shrubbery, lawn, house exteriors, etc.). Misapplication could result in the staining of the home exterior or the burning of plant foliage. Since the eggs tend to hatch after a rain, repeated applications may be necessary. The removal of grass from a 6- to 24-inch-wide band adjacent to the foundation will act as a deterrent to mite invasions. Within the home, the best control method is to use a strong vacuum, which also will prevent the mites from staining surfaces. It is not necessary to chemically treat for mites within the home because they will die there within a few days from dehydration.

### WARNING

Pesticides are poisonous. Read and follow directions and safety precautions on labels. Handle carefully and store in original labeled containers out of the reach of children, pets, and livestock. Dispose of empty containers right away, in a safe manner and place. Do not contaminate forage, streams, or ponds.

Steven B. Jacobs  
Sr. Extension Associate  
Dept. of Entomology  
Revised May 2009

NP-10

©The Pennsylvania State University 2009

This publication is available in alternative media on request.

Where trade names are used, no discrimination is intended and no endorsement by The Pennsylvania State University or Pennsylvania Department of Agriculture is implied.

Entomological Notes are intended to serve as a quick reference guide and should not be used as a substitute for product label information. Although every attempt is made to produce Entomological Notes that are complete, timely, and accurate, the pesticide user bears the responsibility of consulting the pesticide label and adhering to those directions.

Issued in furtherance of Cooperative Extension Works, Acts of Congress May 8 and June 30, 1914, in cooperation with the U.S. Department of Agriculture and the Pennsylvania Legislature. D. Jackson, Director of Cooperative Extension, The Pennsylvania State University.

The Pennsylvania State University is committed to the policy that all persons shall have equal access to programs, facilities, admission, and employment without regard to personal characteristics not related to ability, performance, or qualifications as determined by University policy or by state or federal authorities. It is the policy of the University to maintain an academic and work environment free of discrimination, including harassment. The Pennsylvania State University prohibits discrimination and harassment against any person because of age, ancestry, color, disability or handicap, national origin, race, religious creed, sex, sexual orientation, or veteran status. Discrimination or harassment against faculty, staff, or students will not be tolerated at The Pennsylvania State University. Direct all inquiries regarding the nondiscrimination policy to the Affirmative Action Director, The Pennsylvania State University, 328 Bouke Building, University Park, PA 16802-5901, Tel 814-865-4700/V, 814-863-1150/TTY.