

Nahmakanta

Trails and Interest Points

- Hiking Trail
- Appalachian Trail (A)
- Great Circle Hiking Trail
- ATV Trail
- Snowmobile Trail
- Multi-use Trail (ATV & Snowmobile)
- Checkpoint
- Parking
- Boat Launch, Hand-Carry*
- Overlook
- Tent Site (Number of Sites)
- Tent Site (Fire Permit Required)
- Lean-to (Number of Sites)
- RV-accessible Site (Number of Sites)
- Waterfall

Transportation

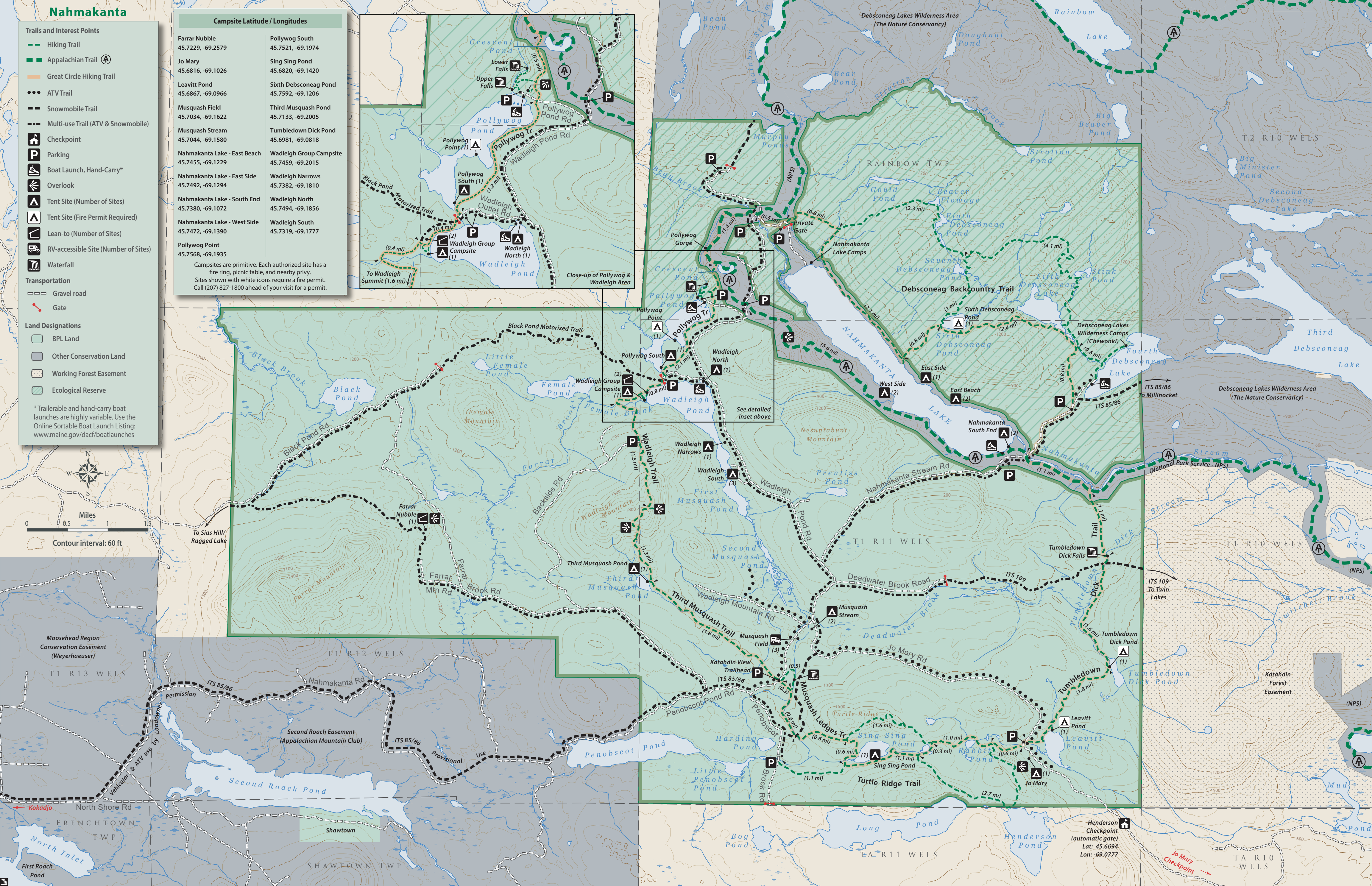
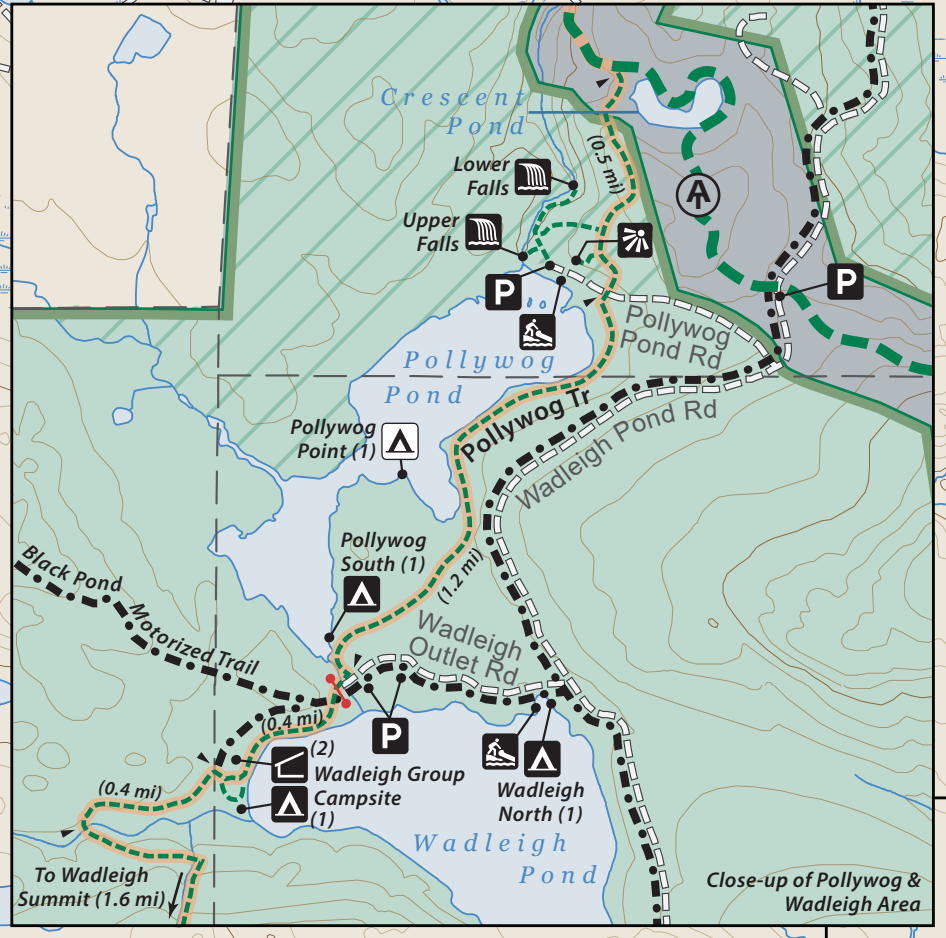
- Gravel road
- Gate
- BPL Land
- Other Conservation Land
- Working Forest Easement
- Ecological Reserve

*Trailerable and hand-carry boat launches are highly variable. Use the Online Sortable Boat Launch Listing: www.maine.gov/dacf/boatlaunches



Campsite Latitude / Longitudes	
Farrar Nubble 45.7229, -69.2579	Pollywog South 45.7521, -69.1974
Jo Mary 45.6816, -69.1026	Sing Sing Pond 45.6820, -69.1420
Leavitt Pond 45.6867, -69.0966	Sixth Debsconeag Pond 45.7592, -69.1206
Musquash Field 45.7034, -69.1622	Third Musquash Pond 45.7133, -69.2005
Musquash Stream 45.7044, -69.1580	Tumbledown Dick Pond 45.6981, -69.0818
Nahmakanta Lake - East Beach 45.7455, -69.1229	Wadleigh Group Campsite 45.7459, -69.2015
Nahmakanta Lake - East Side 45.7492, -69.1294	Wadleigh Narrows 45.7382, -69.1810
Nahmakanta Lake - South End 45.7380, -69.1072	Wadleigh North 45.7494, -69.1856
Nahmakanta Lake - West Side 45.7472, -69.1390	Wadleigh South 45.7319, -69.1777
Pollywog Point 45.7568, -69.1935	

Campsites are primitive. Each authorized site has a fire ring, picnic table, and nearby privy. Sites shown with white icons require a fire permit. Call (207) 827-1800 ahead of your visit for a permit.



Henderson Checkpoint (automatic gate)
Lat: 45.6694
Lon: -69.0777

Jo Mary Checkpoint