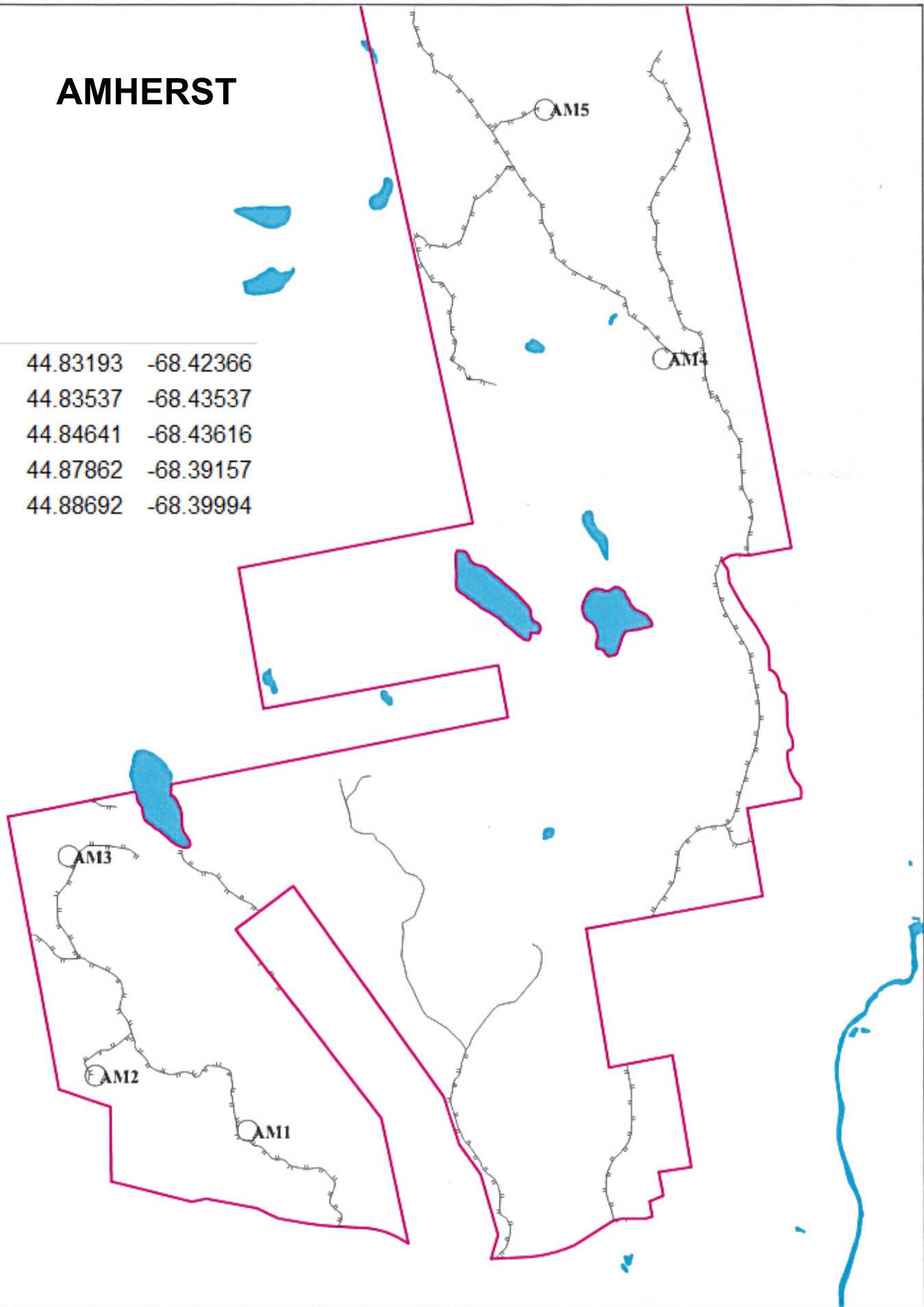


N



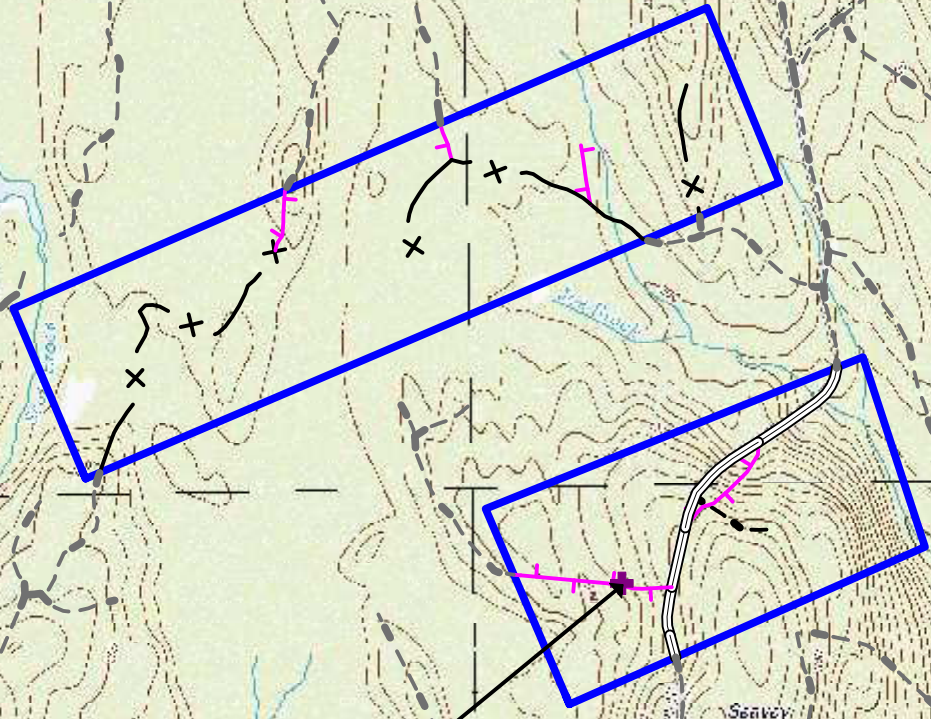
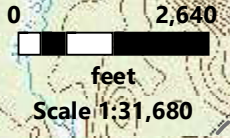
AMHERST

AM1	44.83193	-68.42366
AM2	44.83537	-68.43537
AM3	44.84641	-68.43616
AM4	44.87862	-68.39157
AM5	44.88692	-68.39994



Big Lake

BIGLK1 45.1214 -67.6178

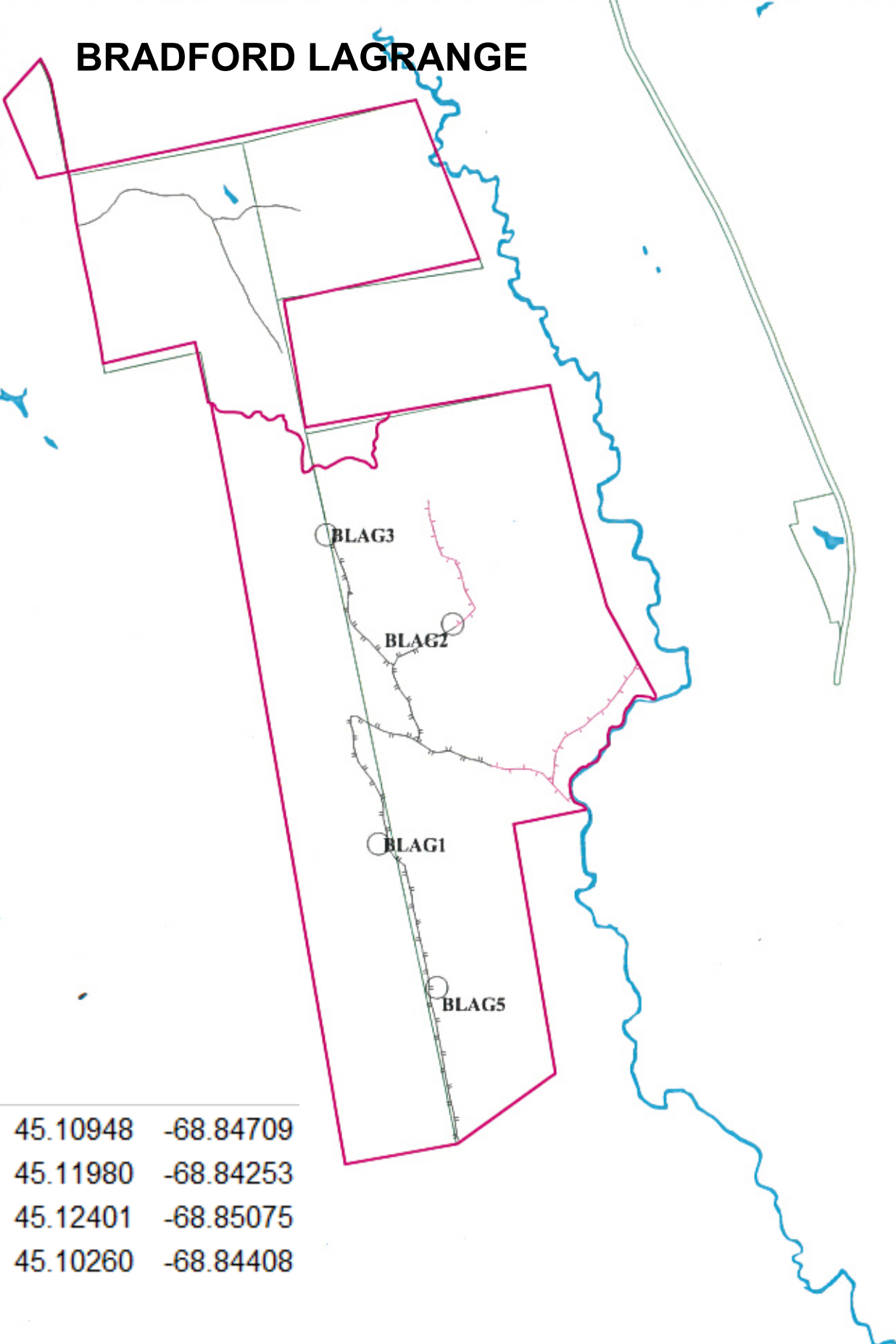


45.1214Lat,-67.6178Long
BIGLK1

Not a survey, for management purposes only

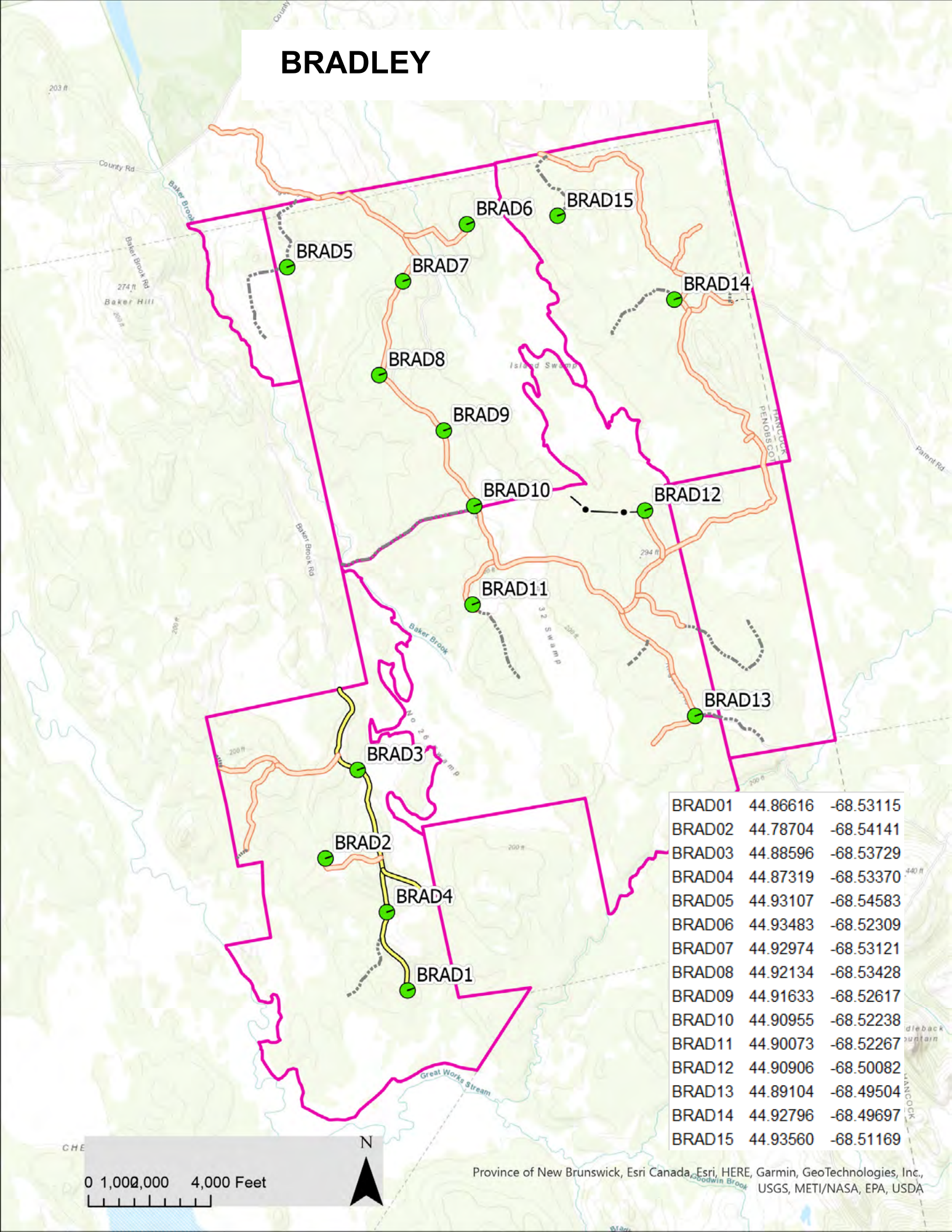


BRADFORD LAGRANGE

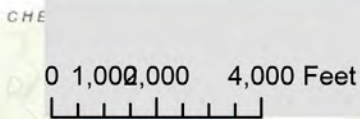


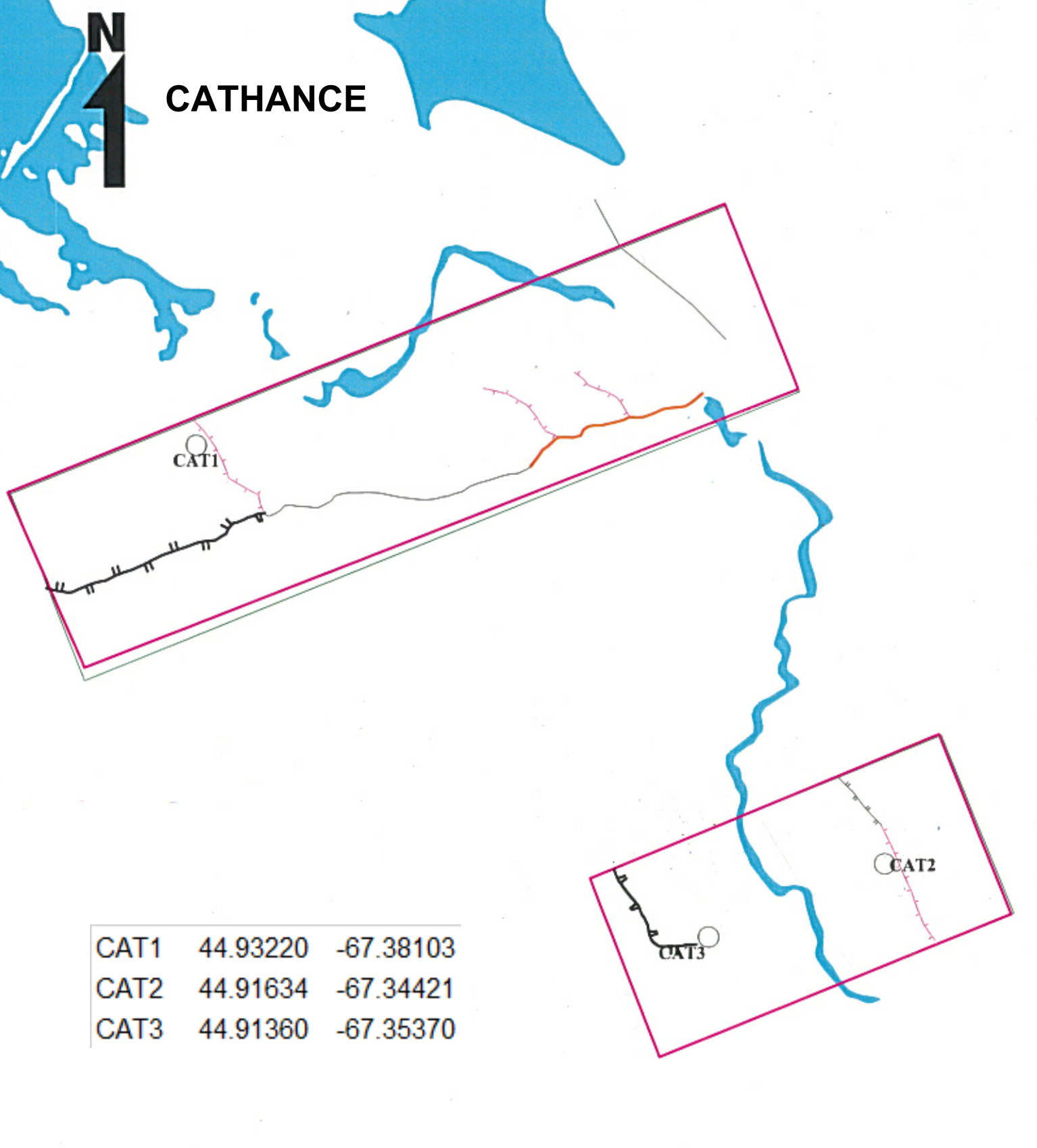
BLAG1	45.10948	-68.84709
BLAG2	45.11980	-68.84253
BLAG3	45.12401	-68.85075
BLAG5	45.10260	-68.84408

BRADLEY



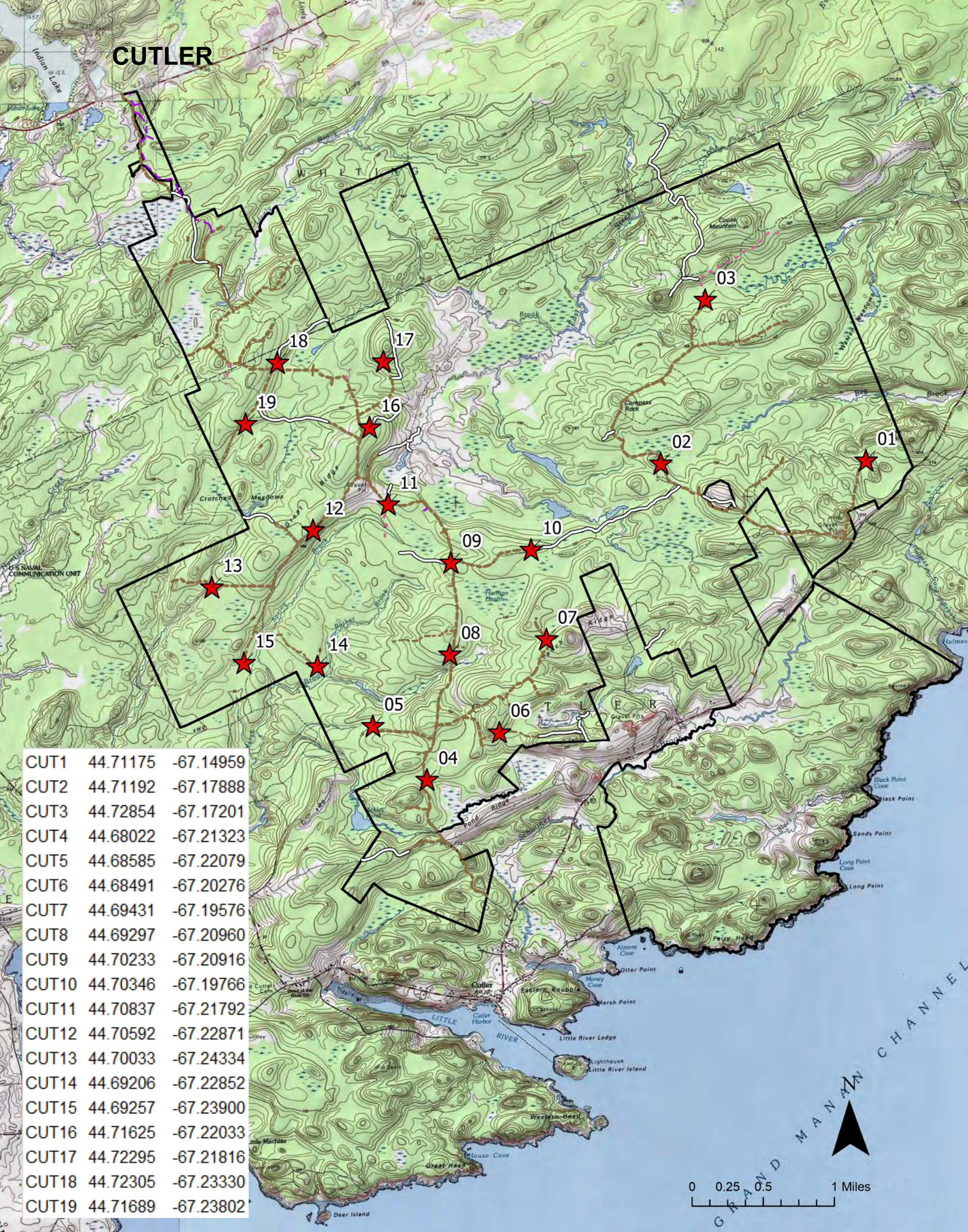
BRAD01	44.86616	-68.53115
BRAD02	44.78704	-68.54141
BRAD03	44.88596	-68.53729
BRAD04	44.87319	-68.53370
BRAD05	44.93107	-68.54583
BRAD06	44.93483	-68.52309
BRAD07	44.92974	-68.53121
BRAD08	44.92134	-68.53428
BRAD09	44.91633	-68.52617
BRAD10	44.90955	-68.52238
BRAD11	44.90073	-68.52267
BRAD12	44.90906	-68.50082
BRAD13	44.89104	-68.49504
BRAD14	44.92796	-68.49697
BRAD15	44.93560	-68.51169





CAT1	44.93220	-67.38103
CAT2	44.91634	-67.34421
CAT3	44.91360	-67.35370

CUTLER

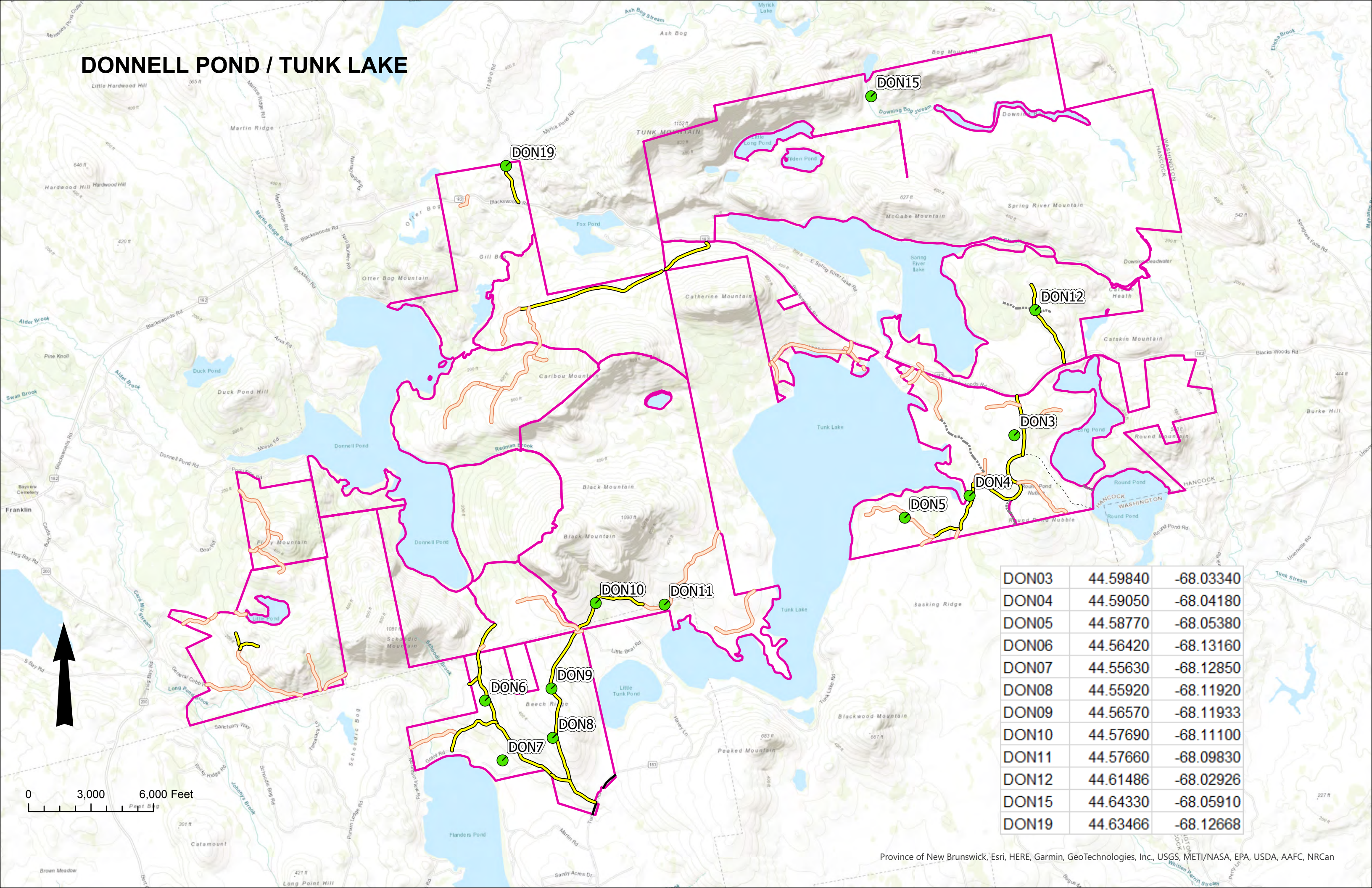


CUT1	44.71175	-67.14959
CUT2	44.71192	-67.17888
CUT3	44.72854	-67.17201
CUT4	44.68022	-67.21323
CUT5	44.68585	-67.22079
CUT6	44.68491	-67.20276
CUT7	44.69431	-67.19576
CUT8	44.69297	-67.20960
CUT9	44.70233	-67.20916
CUT10	44.70346	-67.19766
CUT11	44.70837	-67.21792
CUT12	44.70592	-67.22871
CUT13	44.70033	-67.24334
CUT14	44.69206	-67.22852
CUT15	44.69257	-67.23900
CUT16	44.71625	-67.22033
CUT17	44.72295	-67.21816
CUT18	44.72305	-67.23330
CUT19	44.71689	-67.23802

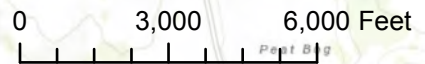
0 0.25 0.5 1 Miles

GRAND MANAN CHANNEL

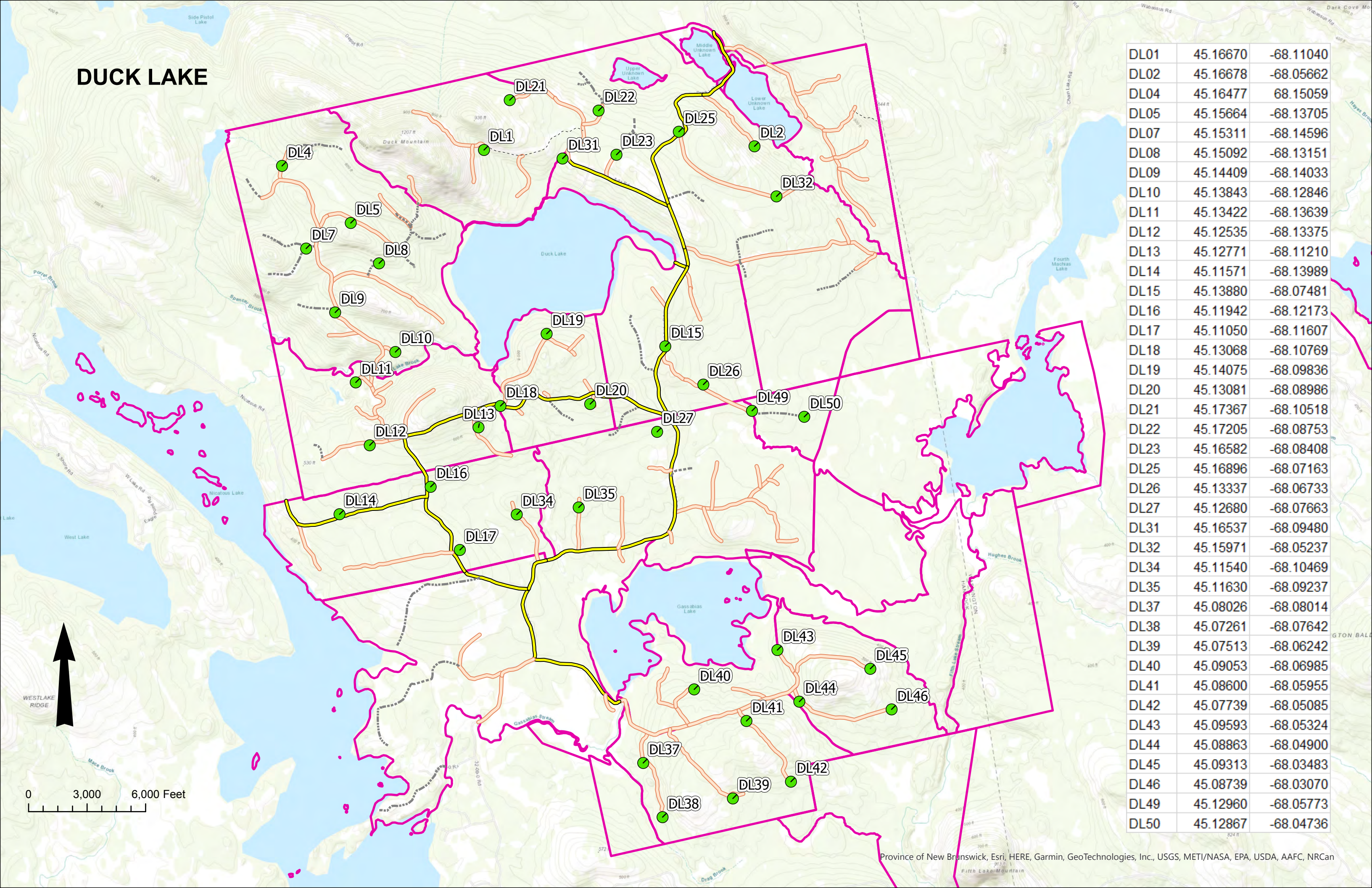
DONNELL POND / TUNK LAKE



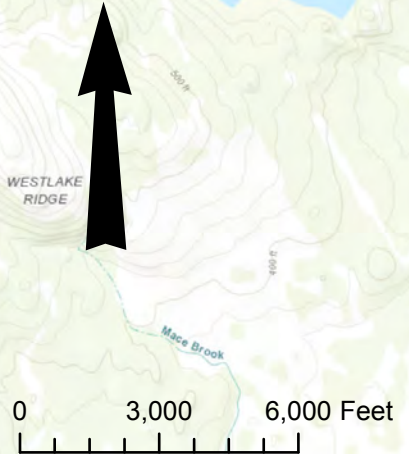
DON03	44.59840	-68.03340
DON04	44.59050	-68.04180
DON05	44.58770	-68.05380
DON06	44.56420	-68.13160
DON07	44.55630	-68.12850
DON08	44.55920	-68.11920
DON09	44.56570	-68.11933
DON10	44.57690	-68.11100
DON11	44.57660	-68.09830
DON12	44.61486	-68.02926
DON15	44.64330	-68.05910
DON19	44.63466	-68.12668



DUCK LAKE

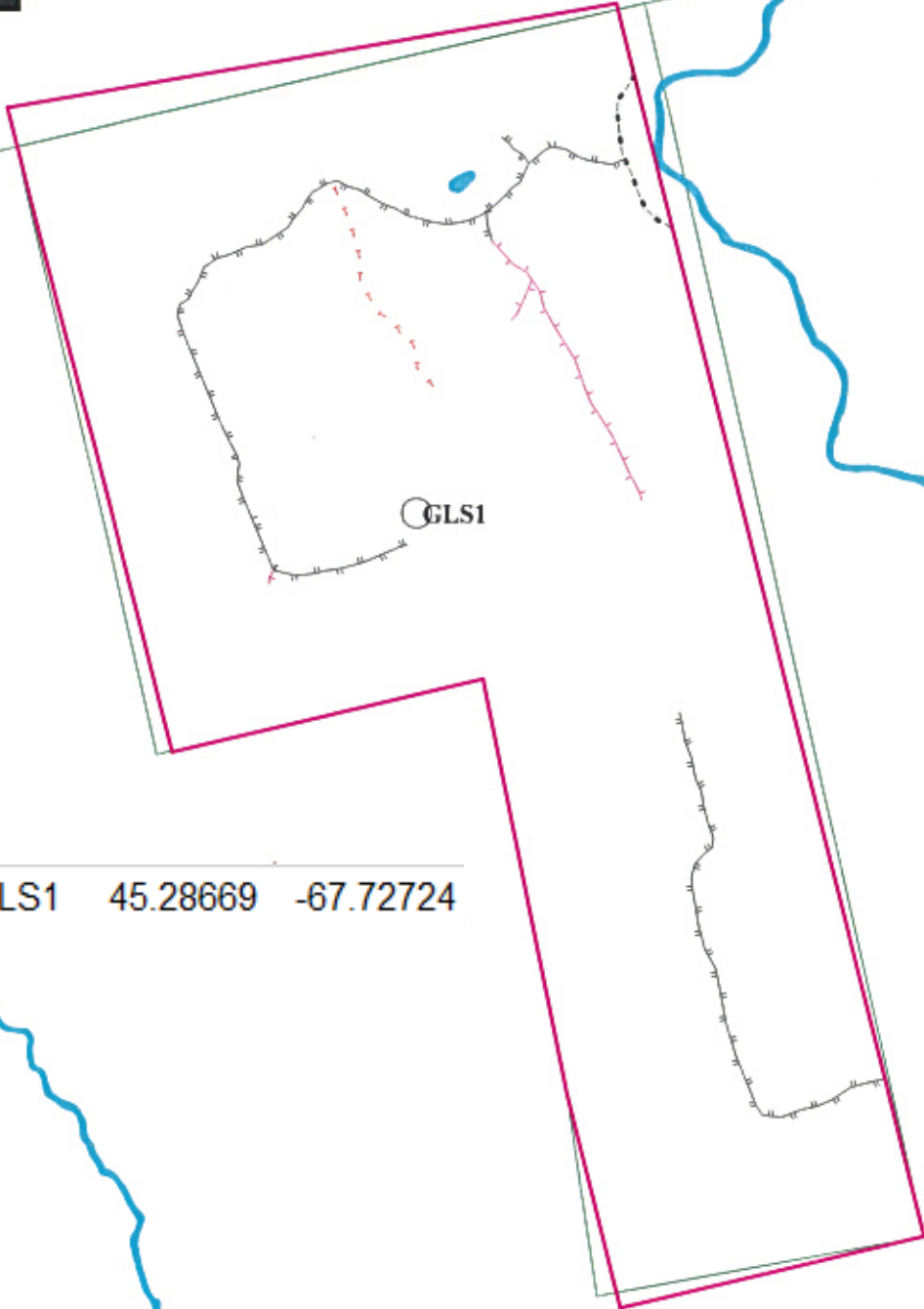


DL01	45.16670	-68.11040
DL02	45.16678	-68.05662
DL04	45.16477	68.15059
DL05	45.15664	-68.13705
DL07	45.15311	-68.14596
DL08	45.15092	-68.13151
DL09	45.14409	-68.14033
DL10	45.13843	-68.12846
DL11	45.13422	-68.13639
DL12	45.12535	-68.13375
DL13	45.12771	-68.11210
DL14	45.11571	-68.13989
DL15	45.13880	-68.07481
DL16	45.11942	-68.12173
DL17	45.11050	-68.11607
DL18	45.13068	-68.10769
DL19	45.14075	-68.09836
DL20	45.13081	-68.08986
DL21	45.17367	-68.10518
DL22	45.17205	-68.08753
DL23	45.16582	-68.08408
DL25	45.16896	-68.07163
DL26	45.13337	-68.06733
DL27	45.12680	-68.07663
DL31	45.16537	-68.09480
DL32	45.15971	-68.05237
DL34	45.11540	-68.10469
DL35	45.11630	-68.09237
DL37	45.08026	-68.08014
DL38	45.07261	-68.07642
DL39	45.07513	-68.06242
DL40	45.09053	-68.06985
DL41	45.08600	-68.05955
DL42	45.07739	-68.05085
DL43	45.09593	-68.05324
DL44	45.08863	-68.04900
DL45	45.09313	-68.03483
DL46	45.08739	-68.03070
DL49	45.12960	-68.05773
DL50	45.12867	-68.04736





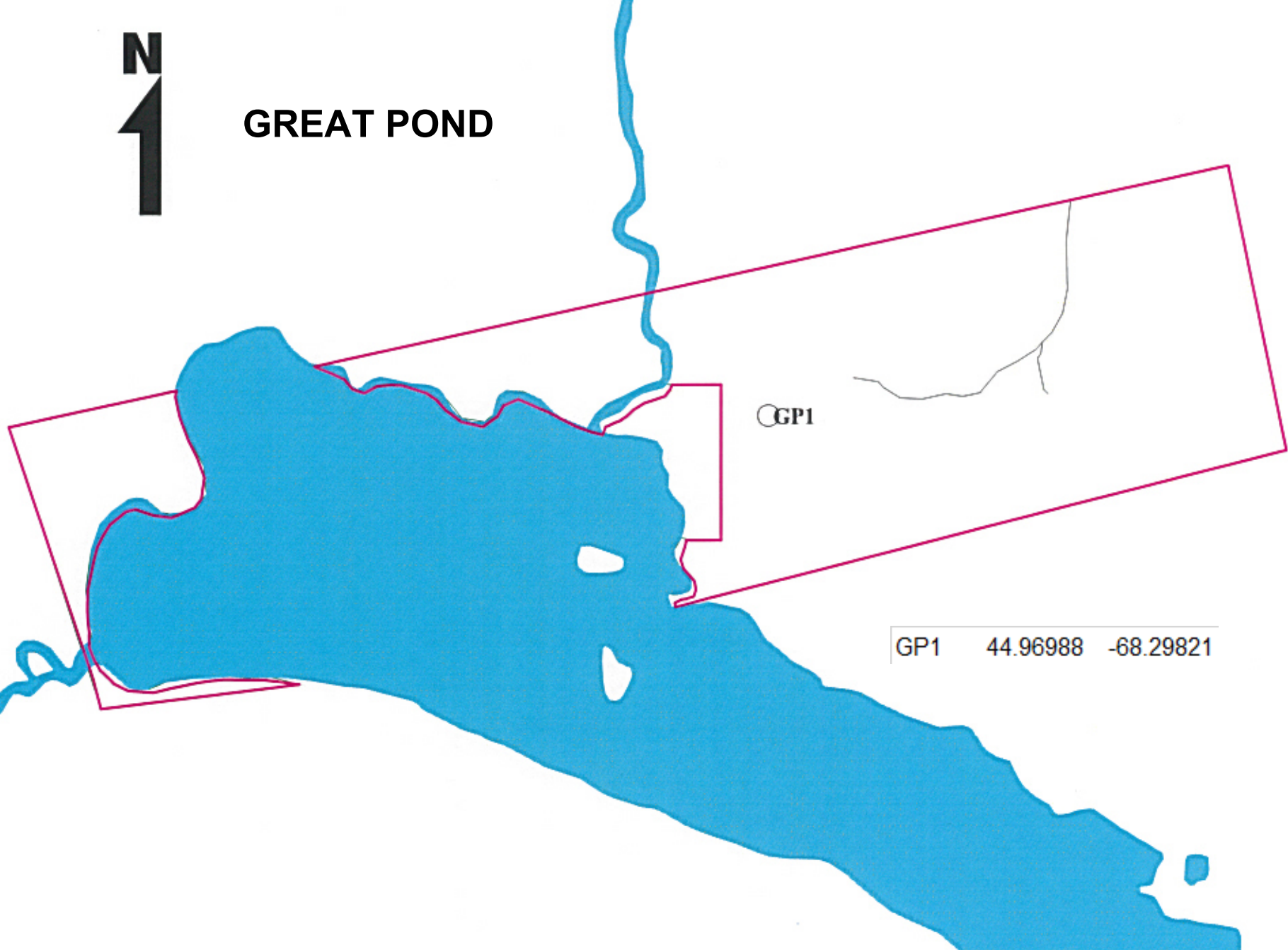
GRAND LAKE STREAM



GLS1 45.28669 -67.72724



GREAT POND



GP1

GP1 44.96988 -68.29821

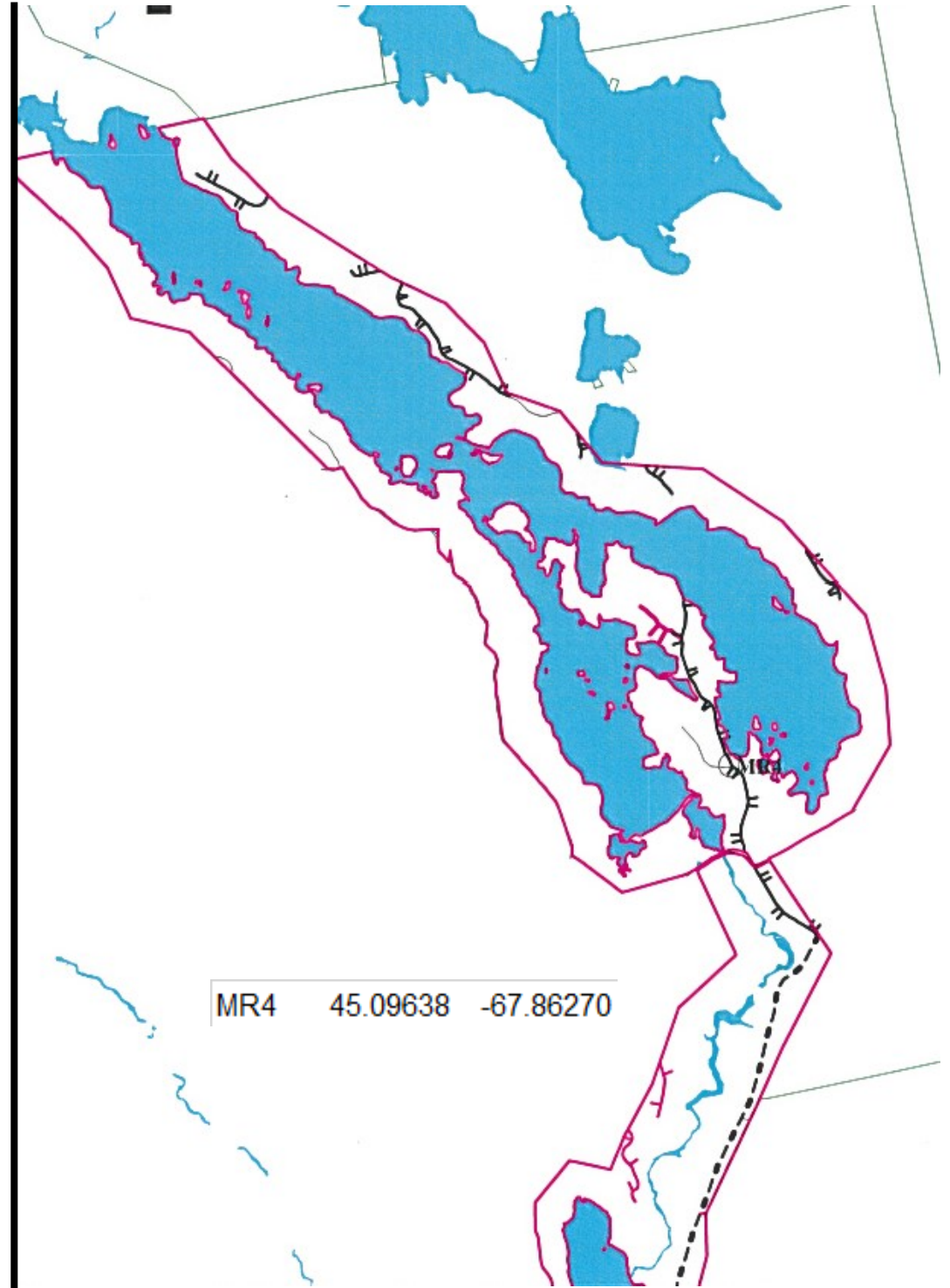
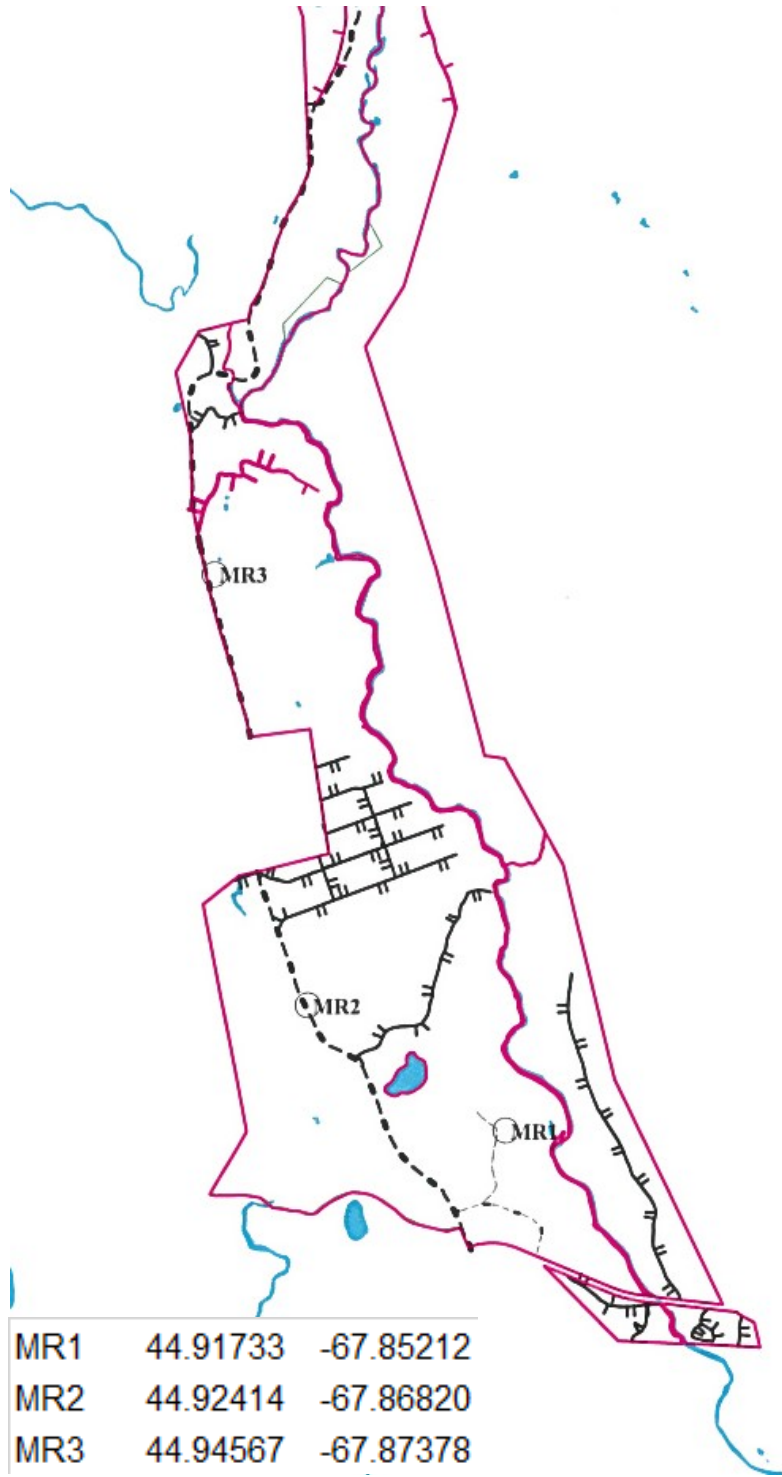
KEG LAKE

KEG LK2

KEG LK1

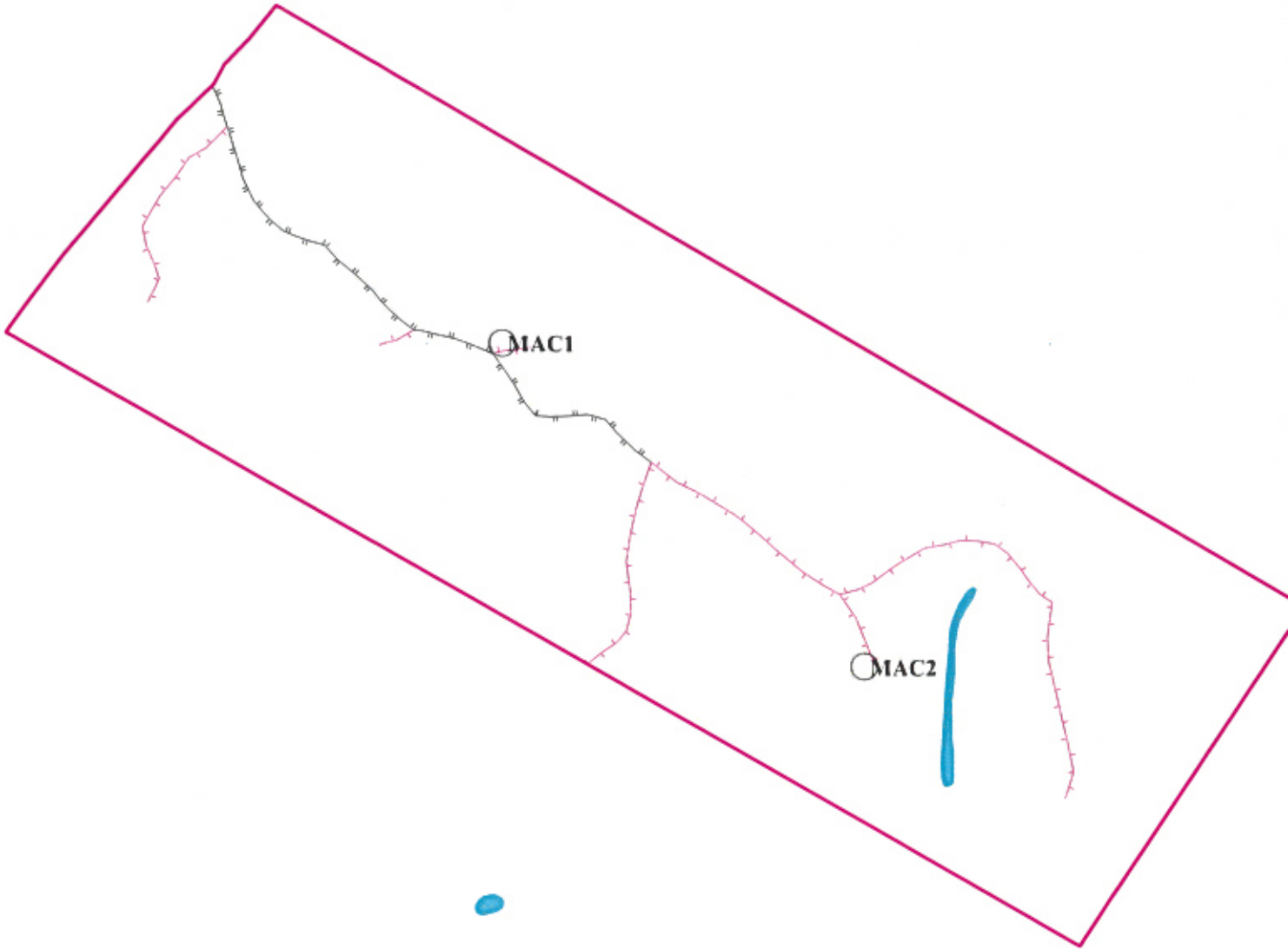
KEG LK1	45.33836	-68.05850
KEG LK2	45.34120	-68.07150

MACHIAS RIVER CORRIDOR





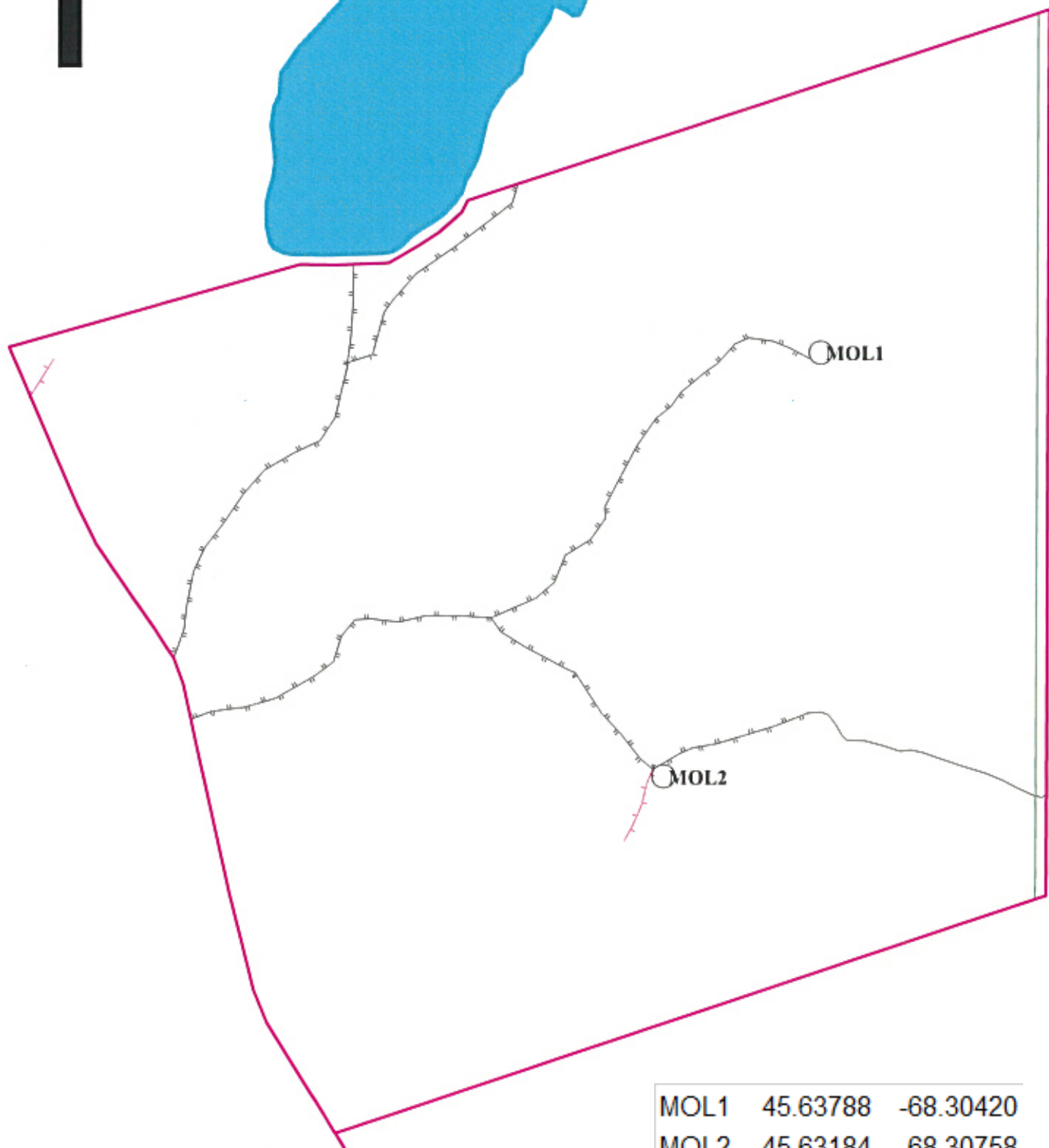
MACWAHOC



MAC1	45.64847	-68.21432
MAC2	45.64250	-68.20424

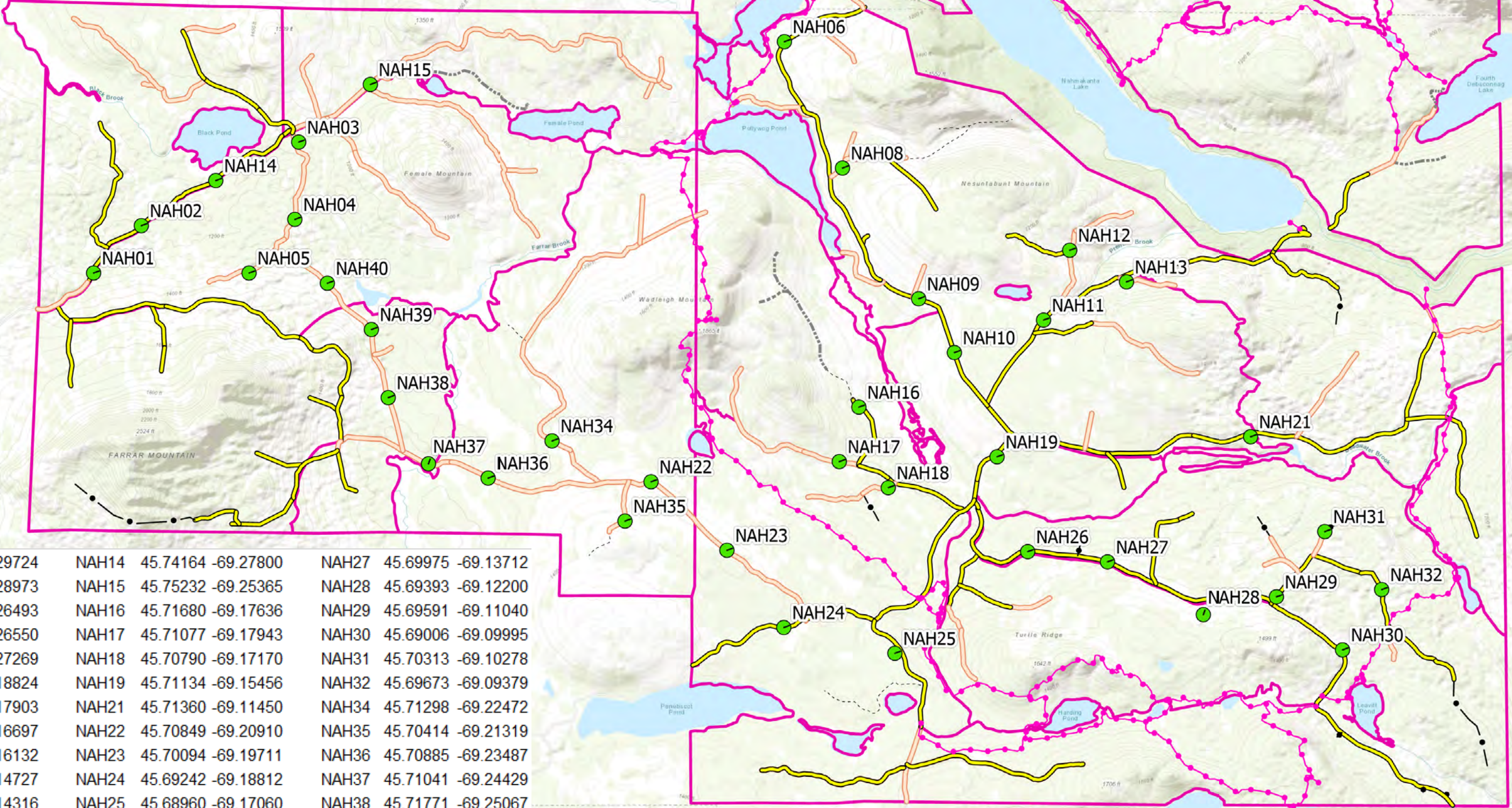
N
1

MOLUNKUS

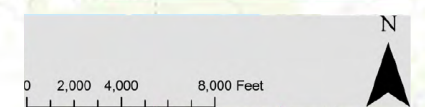


MOL1	45.63788	-68.30420
MOL2	45.63184	-68.30758

NAHMAKANTA

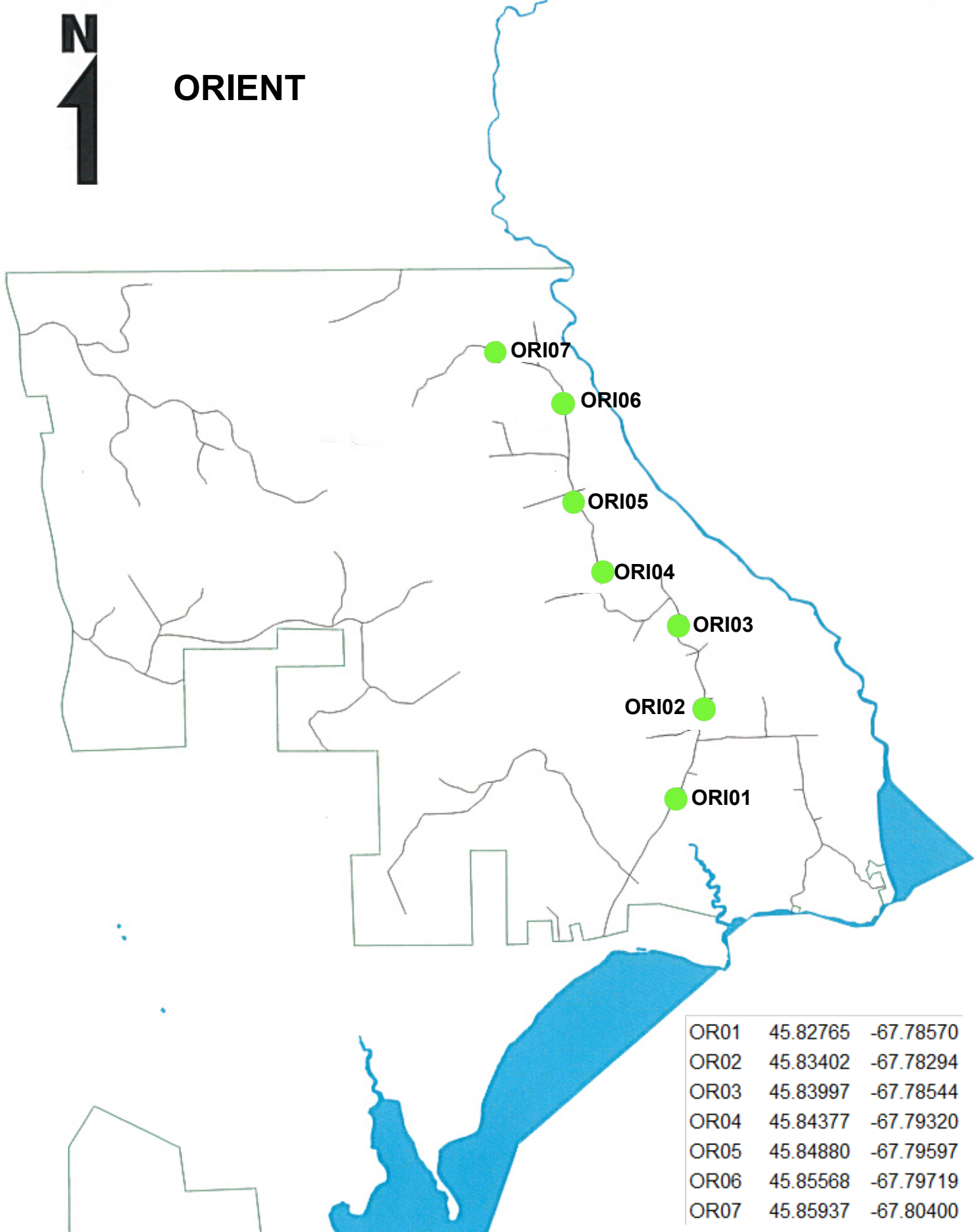


NAH01	45.73137 -69.29724	NAH14	45.74164 -69.27800	NAH27	45.69975 -69.13712
NAH02	45.73662 -69.28973	NAH15	45.75232 -69.25365	NAH28	45.69393 -69.12200
NAH03	45.74592 -69.26493	NAH16	45.71680 -69.17636	NAH29	45.69591 -69.11040
NAH04	45.73737 -69.26550	NAH17	45.71077 -69.17943	NAH30	45.69006 -69.09995
NAH05	45.73143 -69.27269	NAH18	45.70790 -69.17170	NAH31	45.70313 -69.10278
NAH06	45.75717 -69.18824	NAH19	45.71134 -69.15456	NAH32	45.69673 -69.09379
NAH08	45.74322 -69.17903	NAH21	45.71360 -69.11450	NAH34	45.71298 -69.22472
NAH09	45.72879 -69.16697	NAH22	45.70849 -69.20910	NAH35	45.70414 -69.21319
NAH10	45.72285 -69.16132	NAH23	45.70094 -69.19711	NAH36	45.70885 -69.23487
NAH11	45.72646 -69.14727	NAH24	45.69242 -69.18812	NAH37	45.71041 -69.24429
NAH12	45.73418 -69.14316	NAH25	45.68960 -69.17060	NAH38	45.71771 -69.25067
NAH13	45.73070 -69.13420	NAH26	45.70086 -69.14970	NAH39	45.72523 -69.25336
		NAH28	45.69591 -69.11040	NAH40	45.73033 -69.26033





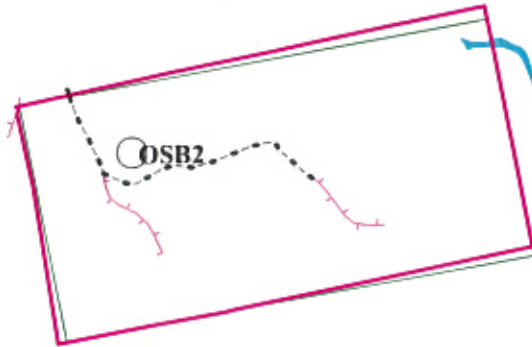
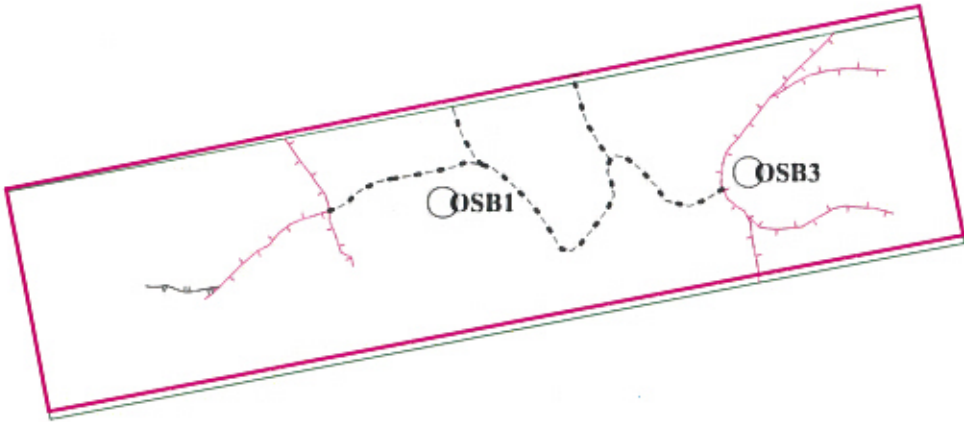
ORIENT



ORI01	45.82765	-67.78570
ORI02	45.83402	-67.78294
ORI03	45.83997	-67.78544
ORI04	45.84377	-67.79320
ORI05	45.84880	-67.79597
ORI06	45.85568	-67.79719
ORI07	45.85937	-67.80400



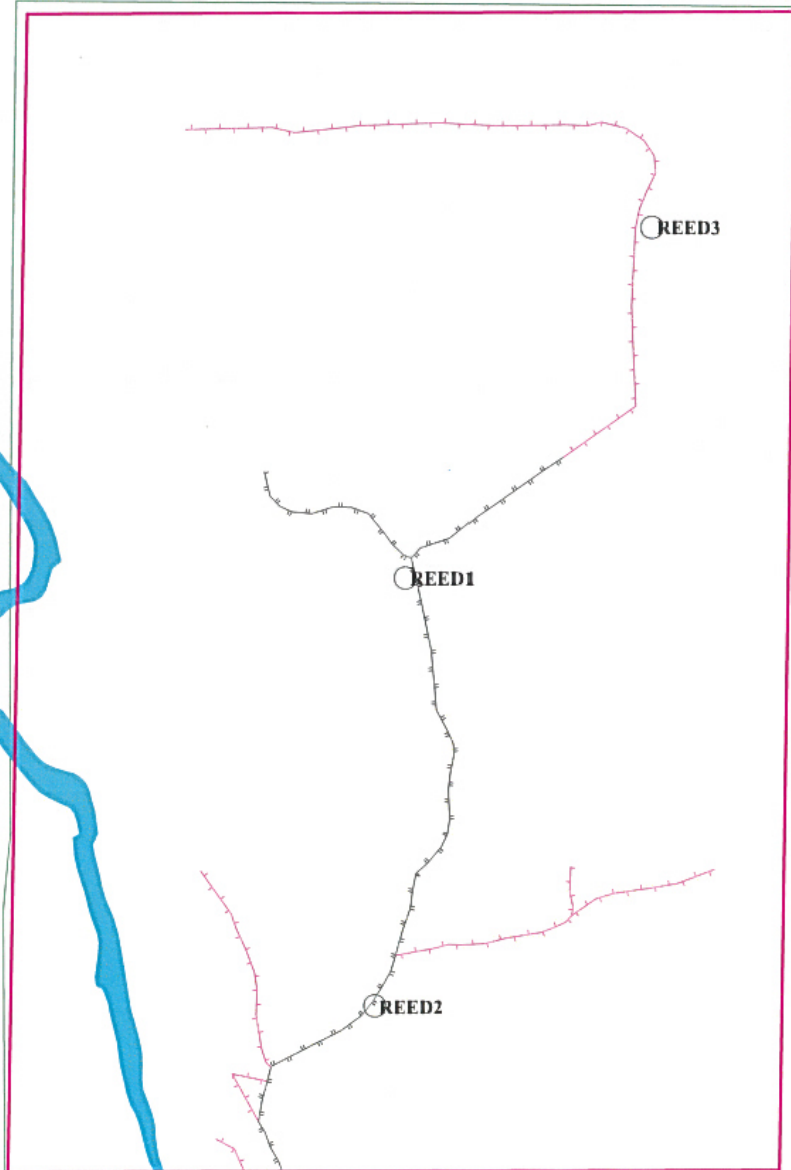
OSBORN



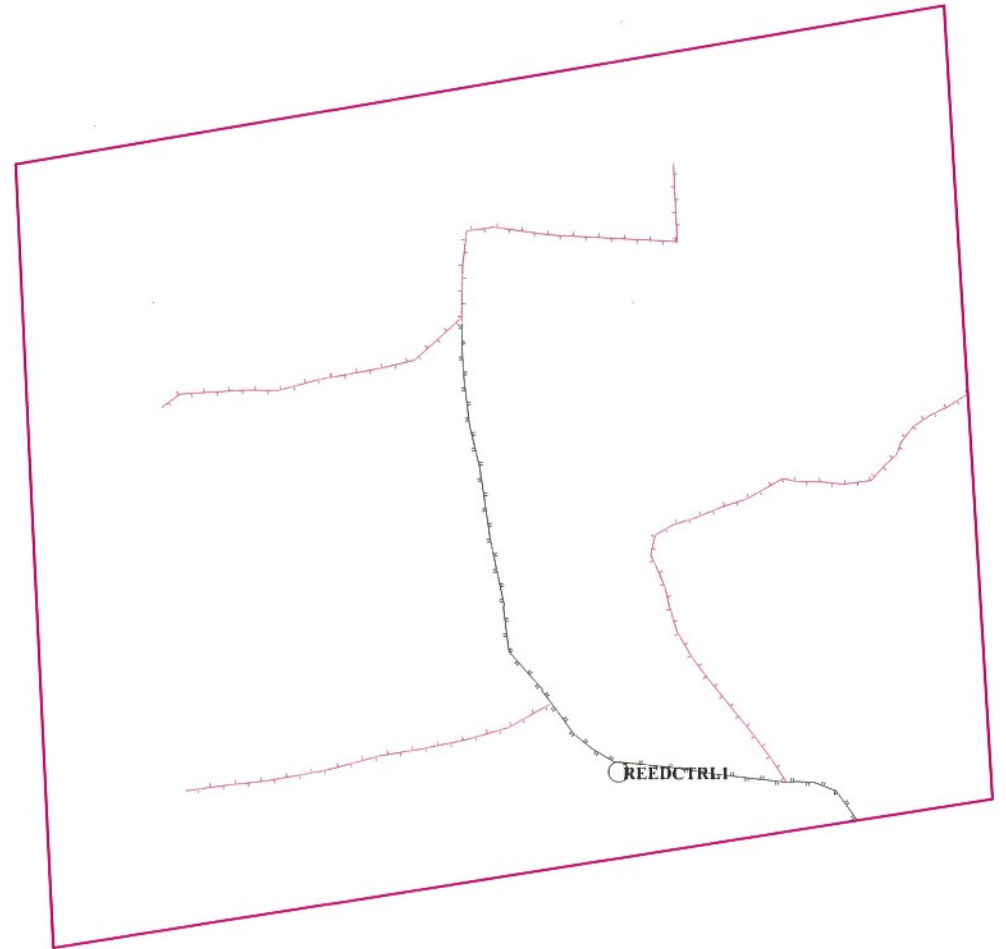
OSB1	44.79220	-68.26010
OSB2	44.77279	-68.24780
OSB3	44.79305	-68.24660

REED

N
1

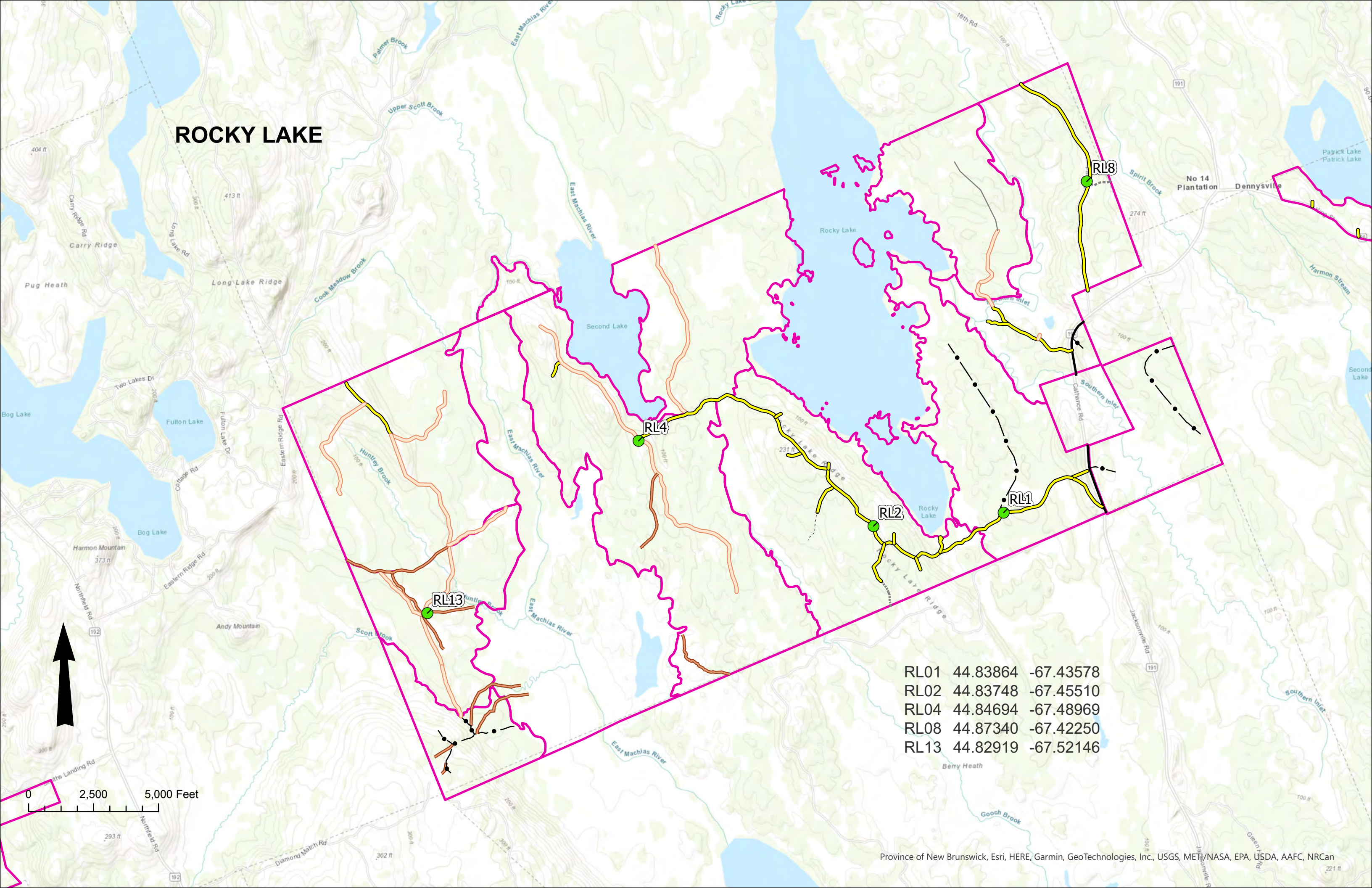


REED1	45.75546	-68.15573
REED2	45.74619	-68.15735
REED3	45.76320	-68.14913



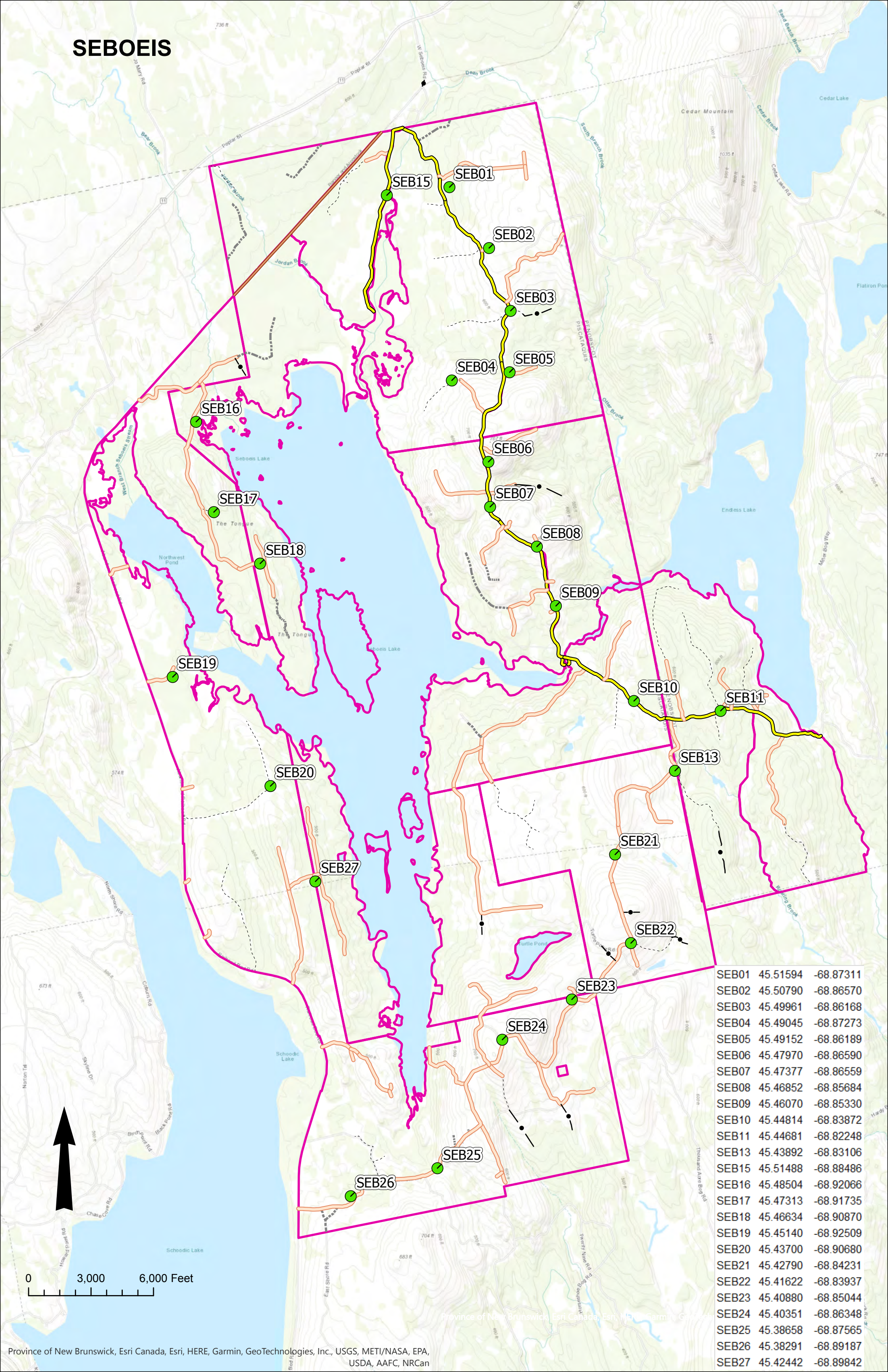
REEDCTRL 45.67346 -68.08576

ROCKY LAKE



RL01	44.83864	-67.43578
RL02	44.83748	-67.45510
RL04	44.84694	-67.48969
RL08	44.87340	-67.42250
RL13	44.82919	-67.52146

SEBOEIS

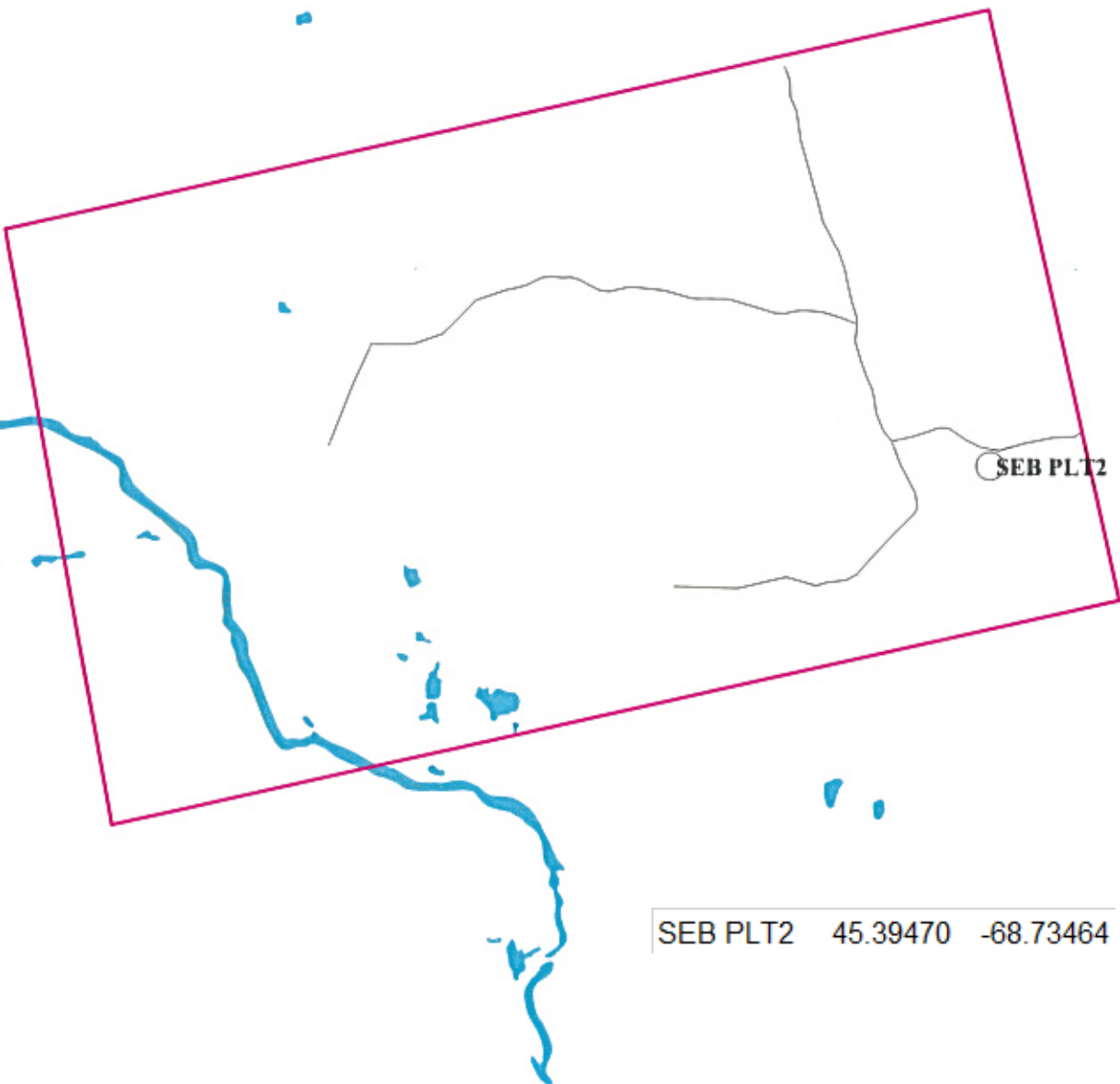


SEB01	45.51594	-68.87311
SEB02	45.50790	-68.86570
SEB03	45.49961	-68.86168
SEB04	45.49045	-68.87273
SEB05	45.49152	-68.86189
SEB06	45.47970	-68.86590
SEB07	45.47377	-68.86559
SEB08	45.46852	-68.85684
SEB09	45.46070	-68.85330
SEB10	45.44814	-68.83872
SEB11	45.44681	-68.82248
SEB13	45.43892	-68.83106
SEB15	45.51488	-68.88486
SEB16	45.48504	-68.92066
SEB17	45.47313	-68.91735
SEB18	45.46634	-68.90870
SEB19	45.45140	-68.92509
SEB20	45.43700	-68.90680
SEB21	45.42790	-68.84231
SEB22	45.41622	-68.83937
SEB23	45.40880	-68.85044
SEB24	45.40351	-68.86348
SEB25	45.38658	-68.87565
SEB26	45.38291	-68.89187
SEB27	45.42442	-68.89842

0 3,000 6,000 Feet

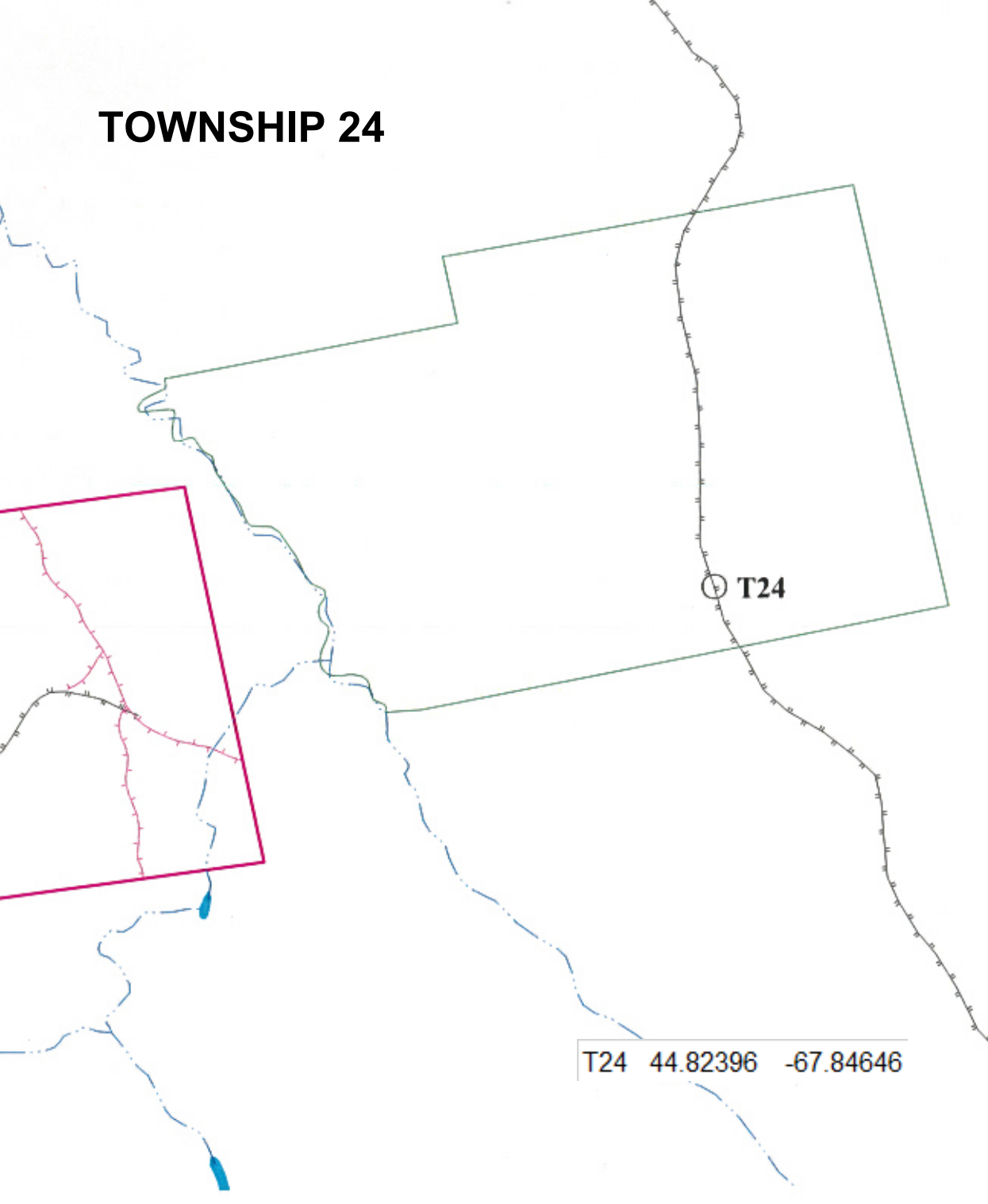


SEBOEIS PLT.



SEB PLT2 45.39470 -68.73464

TOWNSHIP 24



T24

T24 44.82396 -67.84646