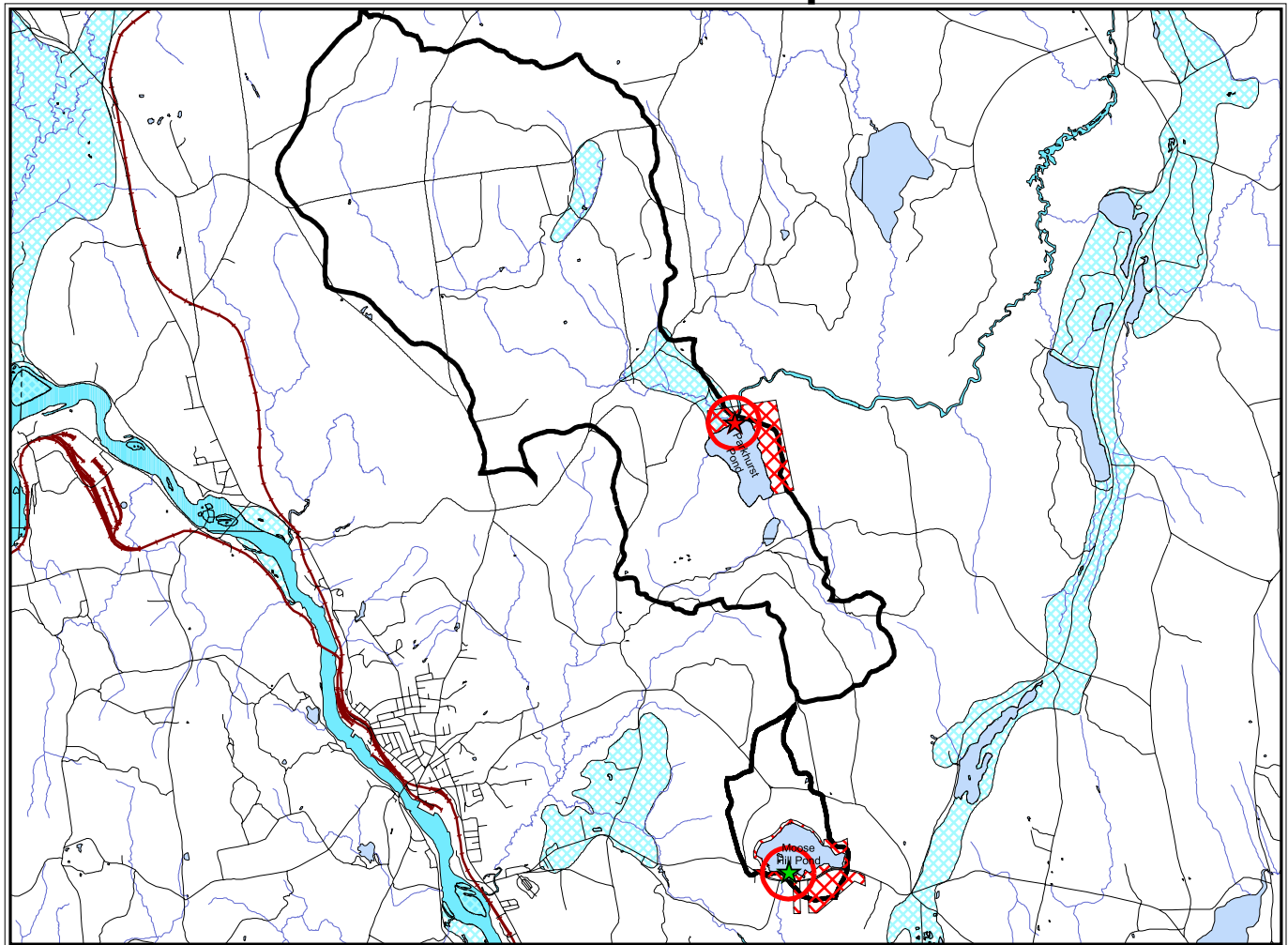




# Livermore Falls Public Water Supply Land Under Protective Ownership & Sand & Gravel Aquifers

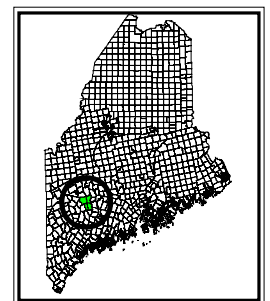


5000 0 5000 10000 15000 Feet



## Legend

- |   |   |  |                        |
|---|---|--|------------------------|
| ★ | Parkhurst Pond Intake                                 |  | Sand & Gravel Aquifers |
| ★ | Moose Hill Pond Intake                                |  | Rivers                 |
|   | 1000 ft. Intake Buffers                               |  | Streams                |
|   | Lakes & Ponds   |  | Public Roads           |
|   | Watershed Boundaries                                  |  | Railroad Line          |
|   | Livermore Falls Water District Property (Approximate) |  |                        |



**Figure 2A**

- 1) Base data layers are from the Maine Office of GIS.
- 2) Watershed boundary, intake and buffer locations are from the Maine Drinking Water Program.
- 3) Property data from the towns of Jay and Livermore Falls.
- 4) Data are for planning purposes only.

Scale 1:84,000  
1 inch = 7,000 feet  
3/3/03