

# MaineDOT COMMUNITY SERVICES DIVISION



LRAP \$\$\$\$





# MaineDOT COMMUNITY SERVICES DIVISION

- Our focus is local roads, and
- Working with all size towns/cities/counties
- Small staff
- We are not involved with MaineDOT's community based initiatives,  
MPI, VPI, PPI, BPI

Contact your DOT Planner for that info

Matt Drost, Jarod Farn Guillette, Steve Cole, Dakota Hewlett

# MaineDOT COMMUNITY SERVICES DIVISION

- Maine Local Roads Center (Maine's LTAP) – federal program
- Local Road Assistance Program (LRAP) -- \$\$ to every town

---

- Highway Classifications in Maine – arterials, collectors, State Highway, State Aid, townways? NHS
- State “urban compact areas” ----- where and why?
- Road inventories in every town
- MUTCD --- what is it ?
- RSMS – road management software for towns
- State and US route numbering
- Purchasing programs for towns – salt, traffic devices, etc

# Maine Local Roads Center

- Maine's Local Technical Assistance Program --- one per state

---

- Daily technical assistance on gravel roads, pavement, drainage, traffic issues, winter ops, ..... you name it
- Statewide workshops on MANY subjects
- Work closely with ME Chapter APWA (Highway Congress, etc)
- Equipment training, chain saw training, etc
- Bridge Ranger (Jim Foster) & Road Ranger (Paul Brown)



# Local Road Design Standards

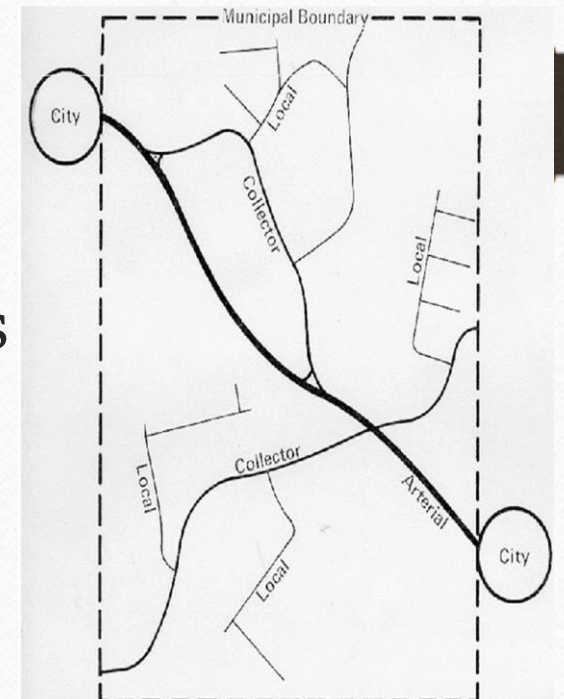
- Many Maine towns have none (potential issue)

---

- Many municipal ordinances are outdated per standards and specs
- Culverts, pavement, gravel bases, dimensions, oversight?
- Will they apply to just subdivisions or any single road?
- SMPRPC used to have a good guide

# Highway Classifications – arterials, collectors, State Highway, State Aid, townways?

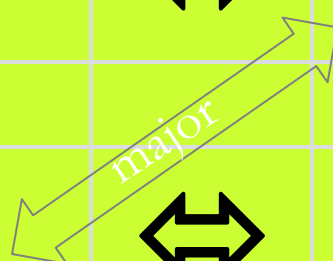
- State law – Federal functional classifications vs state jurisdictions
- Affects funding eligibility and who maintains what
- Highway corridor priorities (HCP)
- Consider all requests for review from DOT or towns
- Changes happen ---- a few per year
- Goal= consistency across Maine



# Linking Federal FFC and State Jurisdictions

Federal Functional Class		State Highway Designation
Arterial	↔	State Highway
(principal & minor)		
Collector	↔	State Aid
(major, minor, urban)		
Local	↔	Townway

*from Title 23: Section 53*





# State and US Route numbering

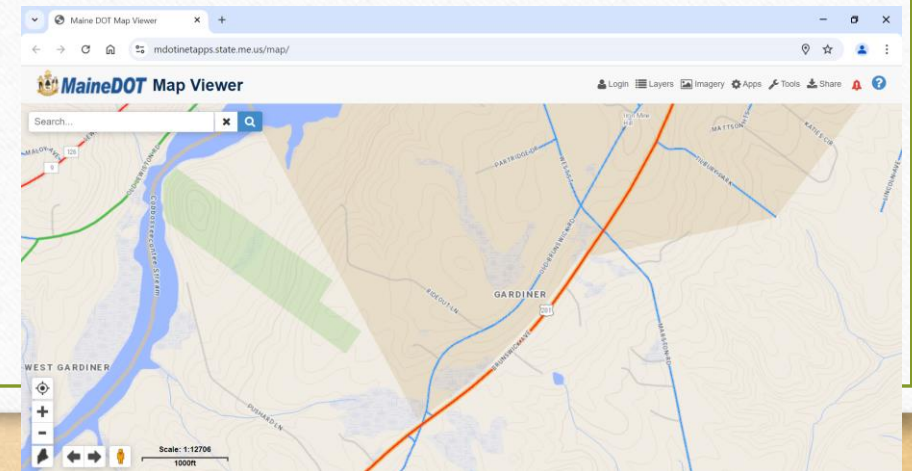
- **Maine** state route numbering does not change much
- Only needs Commissioner approval
- **US** Route numbering is approved at Federal level
- Not common in Maine but will be happening in Brewer soon





# State “urban compact areas” -where and why?

- State law – defines who **maintains** which State and State Aid highways ----- 51 now
- US Census data ---7500+ --- 4 new ones recently
- MAINTENANCE....NOT CAPITAL
- Compact boundary lines being reviewed
- Graphically shown on Mapviewer + written descriptions
- LRAP rates much higher inside compact



# Road inventories in every town

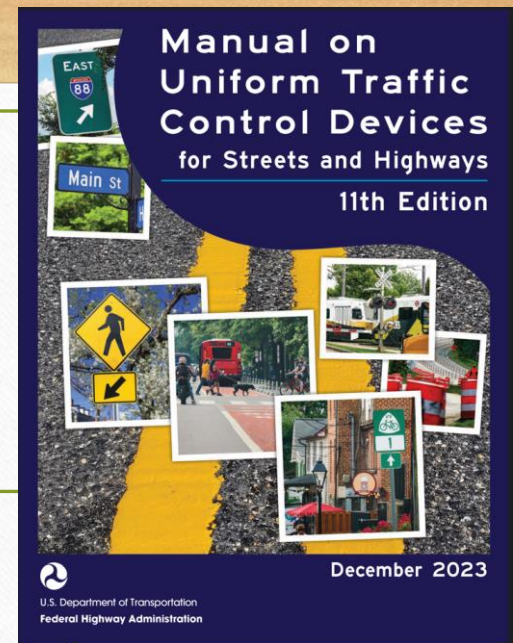
---

- important for many reasons (911, Comp Plans, LRAP, realtors +++)
- work directly with ESCB (E9-1-1 Bureau) at PUC
- All visible on Mapviewer (public and private)
- Depend on town Addressing Officers for updates
- Many have not been done for 15+ years



# MUTCD --- what is it ?

- <https://mutcd.fhwa.dot.gov/index.htm>
- Manual on Uniform Traffic Control Devices (11<sup>th</sup> edition)
- establishes uniform national criteria for the use of traffic control devices that meet the needs and expectancy of road users on all streets, highways, pedestrian and bicycle facilities, and site roadways open to public travel.
- Copies available
- Upcoming training



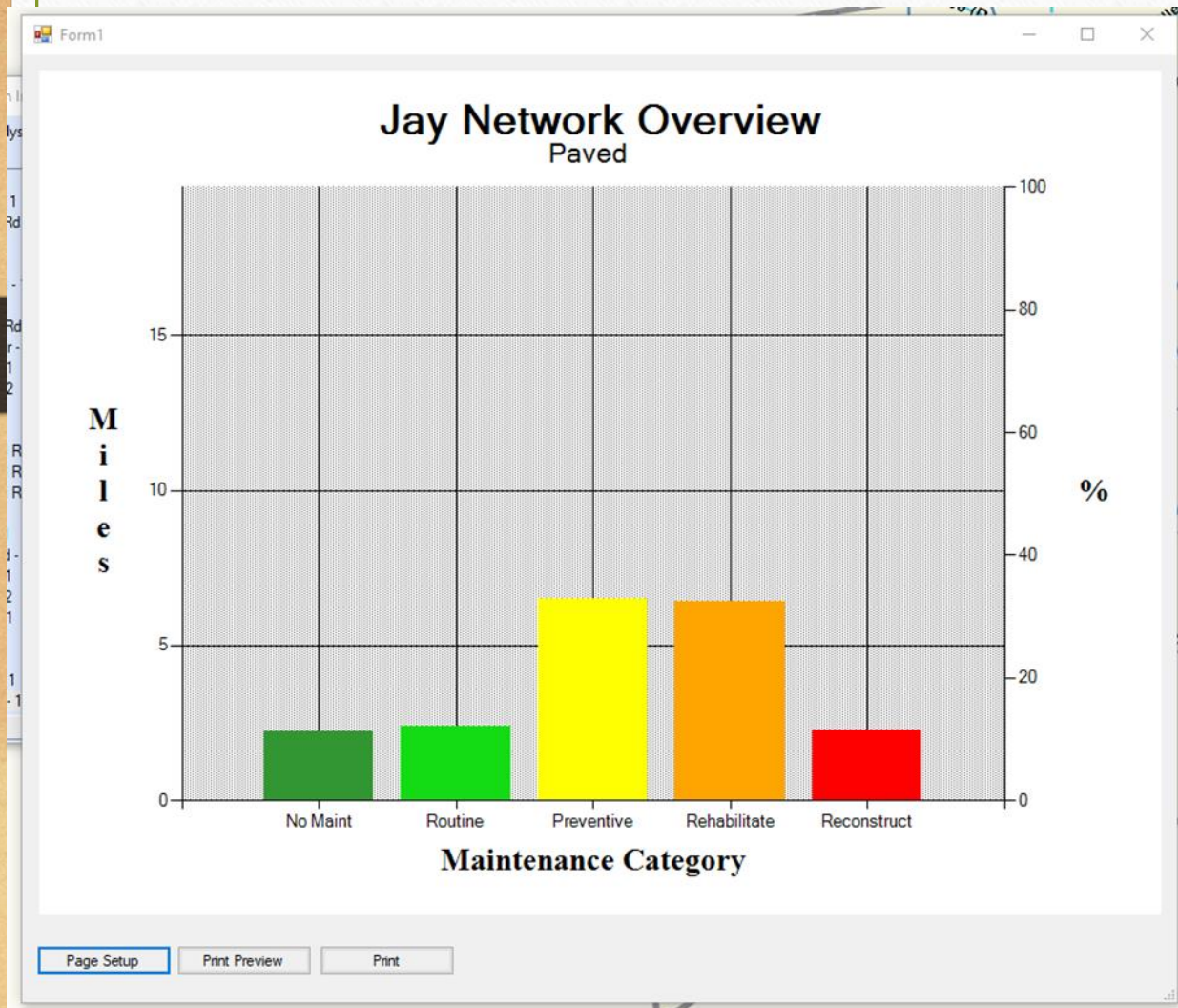
# RSMS --- road surface management system

---

- Software for local road management
- Affordable “pavement management”
- MANY Maine towns using it (and out of state agencies)
- Can prioritize capital and maintenance work in a town + track costs and work done



# RSMS --- road surface management system





# Purchasing programs for towns salt, traffic devices, etc

- Winter salt --- solicit each town annually to get a price for them.....  
no commitments
- RRFB's at ped crossings
- Speed feedback signs
- School zone signing
- In-street ped signs





# MaineDOT COMMUNITY SERVICES DIVISION

---

- Thanks for opportunity to speak here today

**Peter M. Coughlan P.E.**

**[peter.coughlan@maine.gov](mailto:peter.coughlan@maine.gov)**

**207/624-3266**