

The following document has been organized by Corinne Michaud-LeBlanc, Beginning with Habitat Program Climate Coordinator. See the [Beginning with Habitat program here](#).

## Maine Stream Habitat Viewer – [See Here](#)

- The Stream Habitat Viewer is a planning tool to enhance statewide stream restoration and conservation efforts. The Viewer provides a starting point for towns, private landowners, and others to learn more about stream habitats, fish passage barriers, and road crossings in inland, non-tidal areas across the state. Coupled with local knowledge, this tool can help towns identify and prioritize stream crossings to upgrade, increasing infrastructure resilience as well as improving habitat quality and aquatic connectivity. Stream Smart crossing design resources are available ([see via Maine Audubon](#)) to help users construct culverts that maintain fish and wildlife habitat while protecting roads and public safety.

### Strengths:

- Users can analyze natural resources present at a site to aid in planning and prioritization, including priority fish habitats, saltmarshes, and waterfowl and wading bird habitat.
- Multiple recurring funding sources can help municipalities with the cost of planning and replacing stream crossings, including the [Community Resilience Partnership](#), and [Maine Department of Transportation's Municipal Stream Crossing Upgrade Program](#) and [Infrastructure Adaptation Fund](#).

### Limitations:

- It may be difficult for individuals with certain types of color blindness to distinguish between the different categories.
- You cannot search by street address, but you can search for a town of interest and then zoom or scroll to find a specific location.
- Data collection is limited in some areas of the state, and crossings on private property are shown only with landowner permission.

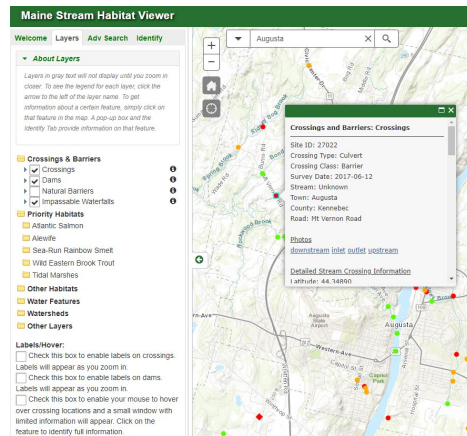


Image: Example stream crossing record, and available data layers on the viewer.

## Maine Tidal Restriction Atlas – [See Here](#)

The Maine Coastal Program and partners created the Tidal Restriction Atlas for communities, road owners, conservation groups, and others who plan for coastal resilience. The Atlas is based on the Maine Coastal Program's statewide Tidal Restriction Assessment, the first dedicated review of tidal structures in decades. The Atlas helps people identify culverts, bridges, dams, and other structures that are currently tidal or will likely become tidal in the future. The Atlas is meant to complement use of [The CoastWise Approach](#) for tidal road crossing design.

### Strengths:

- Allows you to search by address, community name, or latitude/longitude.
- Includes data for current tidal restrictions, as well as locations that are likely to become restrictions in the future.
- Allows the user to analyze additional factors such as sea level rise scenarios and presence of saltmarshes.

### Limitations:

- It may be difficult for individuals with certain types of color blindness to distinguish between the different categories.
- A limited number of data layers are included in the standard menu, but the tool allows users to add additional data layers to customize their analysis.

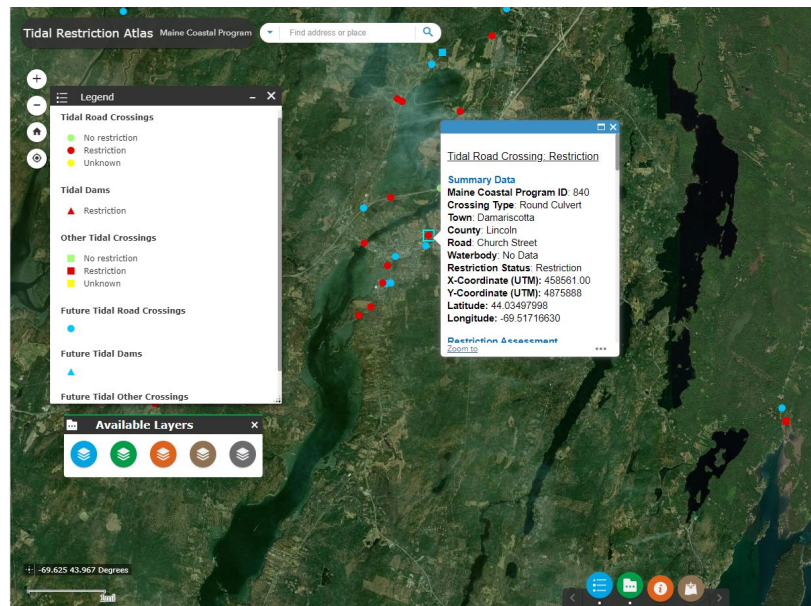


Image: Example tidal road crossing record.