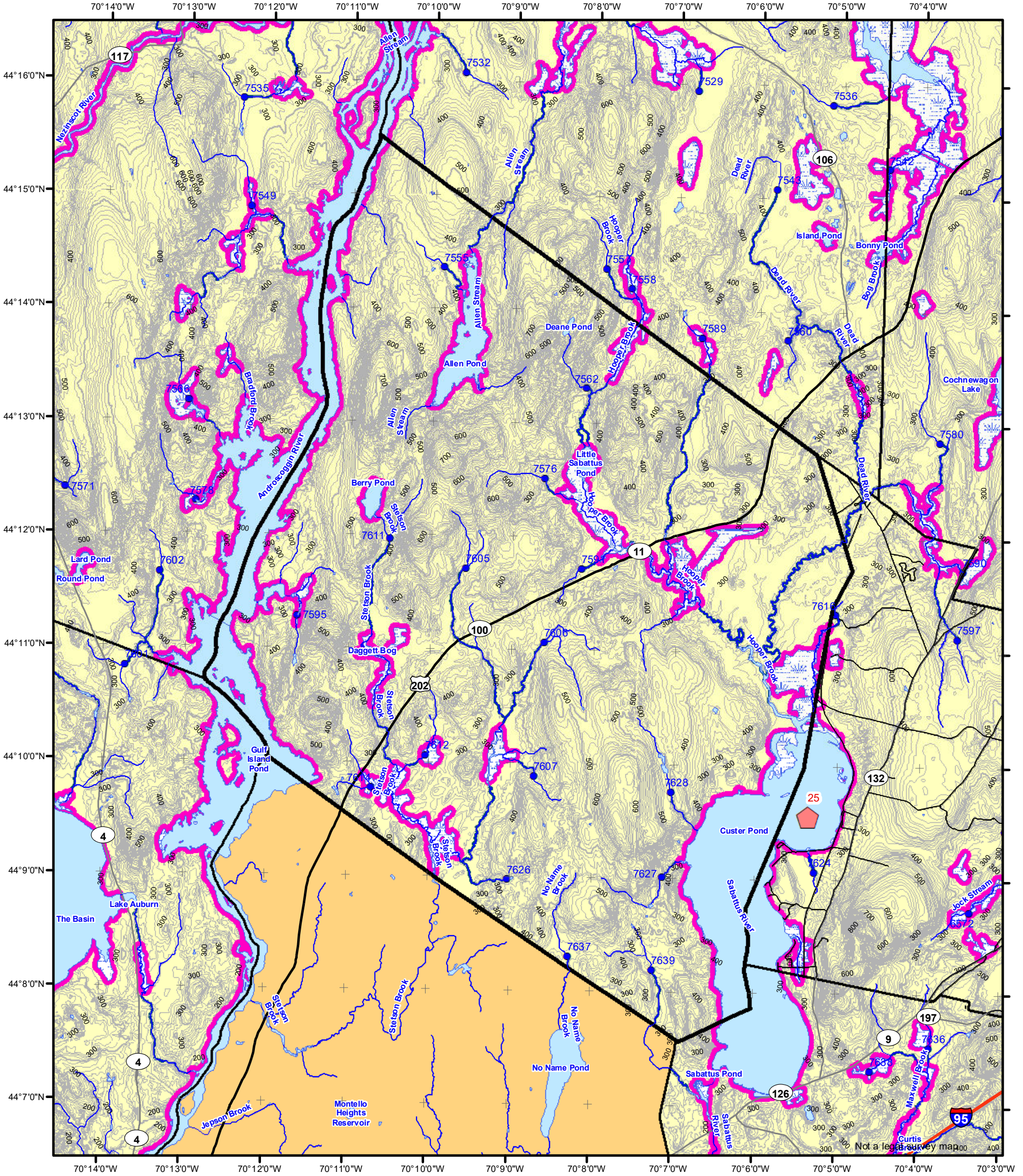


# Statewide Standards for Timber Harvesting in the Shoreland Area\* Map



**This map is ADVISORY, for planning purposes only. Actual ground conditions and water body locations determine where and how MFS timber harvesting rules apply. Contact the MFS for additional information/assistance from a MFS Forester.**

## Forest Operation Notification & Shoreland Area\* Map

# Greene

Adoption Date  
5/1/2009

LO Last Name \_\_\_\_\_  
 LO First Name \_\_\_\_\_  
 Prepared By \_\_\_\_\_  
 FONS # \_\_\_\_\_  
 Date \_\_\_\_\_

### Wetlands

- Non-forested Wetlands Greater Than 10 acres (Lacustrine, Palustrine)
- Emergent or Marine Wetland

### Drainage Points

- 300 Acre Drainage Point (start of the 75 ft buffer)  
1234 - ID Number (location info)
- 25 Square Mile Drainage Point (start of the 250 ft buffer)  
56 - ID Number (location info)

### Buffers

- 250 Foot Buffer Zones  
Great Ponds  
Non-forested Wetlands greater than 10 acres  
Rivers below the 25 square mile drainage point  
Coastal Wetlands  
Tidal Waters  
Essential Wildlife Habitat (Least Tern, Roseate Tern, Piping Plover)
  - 75 Foot Buffer Zones - Streams between the 300 acre drainage point and the 25 square mile drainage point
  - Shoreline Integrity - Streams draining less than 300 acres, ponds and Non-forested Wetlands greater than 0.1 acres and less than 10 acres
- Shoreline Integrity also applies to UNMAPPED streams & wetlands.

### Habitat

- Essential Wildlife Habitat (Least Tern, Roseate Tern, Piping Plover)

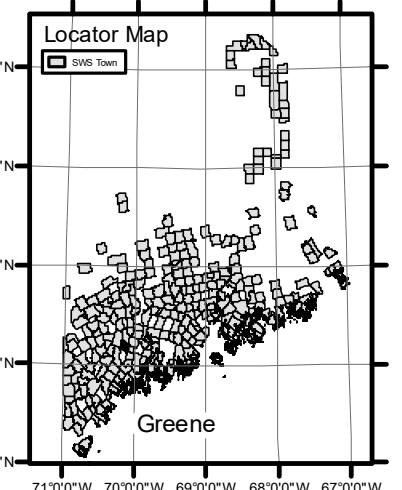
Department of Agriculture, Conservation and Forestry  
Maine Forest Service

## Maine Forest Service

For additional information, please contact the MFS at:  
1-207-287-2791 or 1-800-367-0223 (in-State)

Email us at: [forestinfo@maine.gov](mailto:forestinfo@maine.gov)  
or on the web at: [www.maineforestservice.gov](http://www.maineforestservice.gov)

- FON Town  
Statewide Standard Rules do not apply (Town/DEP Standards apply)
- LUPC - Unorganized or Deorganized Town
- Outside Maine



\*See MFS Rule - Chapter 21 for additional information.  
G.T.Miller E:\s\w\SWS Town Final Map Dec 2021 11 x 17.mxd

