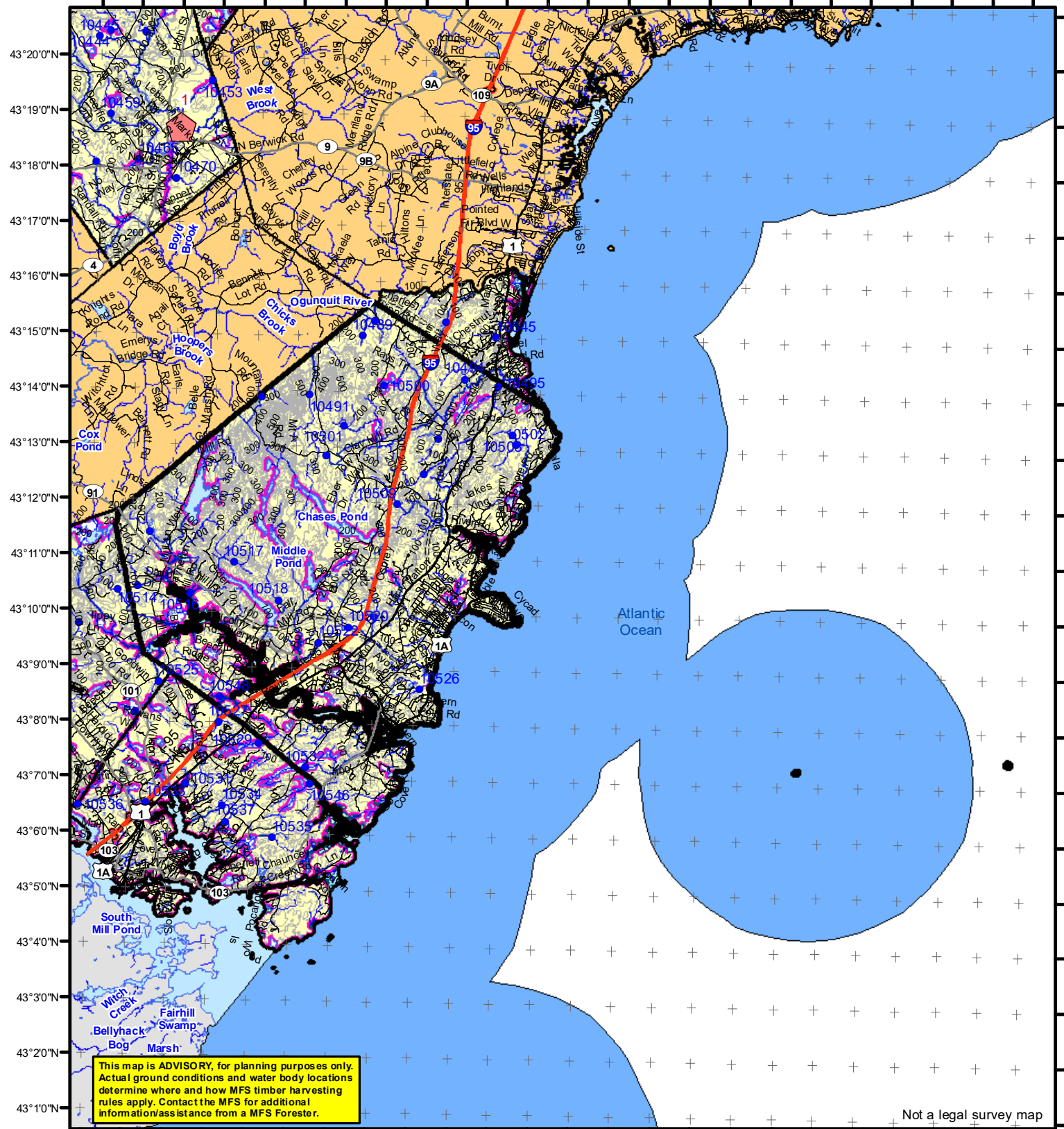


70°45'0"W 70°43'0"W 70°41'0"W 70°39'0"W 70°37'0"W 70°35'0"W 70°33'0"W 70°31'0"W 70°29'0"W 70°27'0"W 70°25'0"W 70°23'0"W



Not a legal survey map

### Statewide Standards

**Buffers**

- 250 Foot Buffer Zones
- Great Ponds
- Non-forested Wetlands greater than 10 acres
- Rivers below the 25 square mile drainage point
- Coastal Wetlands
- Tidal Waters
- Essential Wildlife Habitat (Least Tern, Roseate Tern, Piping Plover)

**75 Foot Buffer Zones**

- Streams between the 300 acre drainage point and the 25 square mile drainage point

**Shoreline Integrity** - Streams draining less than 300 acres, ponds and non-forested Wetlands greater than 0.1 acres and less than 10 acres

Shoreline Integrity also applies to UNMAPPED streams and wetlands.

**Habitat**

- Essential Wildlife Habitat (Least Tern, Roseate Tern, Piping Plover)

### Forest Operation Notification & Shoreland Area\* Map

# York

Adoption Date  
6/27/2017

December 2021

0 2,000 4,000 8,000 12,000 16,000 20,000 24,000 Feet

\*See MFS Rule - Chapter 2.1 for additional information.

Department of Agriculture, Conservation and Forestry  
Maine Forest Service  
Forest Policy & Management

**Roads**

- Interstate
- US Highway
- State Highway
- 24k Roads

**Contours**

- 20 ft
- 100 ft

**Utilities**

- Electric
- Pipeline
- Railroad
- Airfield

**Hydrology**

- Pond or Lake
- River
- Estuary

**Streams**

LO Last Name \_\_\_\_\_

LO First Name \_\_\_\_\_

Prepared By \_\_\_\_\_

FONS # \_\_\_\_\_

Date \_\_\_\_\_

FON Town  
Statewide Standards Rules do not apply (Town/MDEP Standards apply)

Statewide Standards Rules Apply

LUPC - Unorganized or Deorganized Town

Outside Maine

Data Source:  
Maine Office of GIS

G.T.Miller E:\sws\SW S page size december 2021.mxd