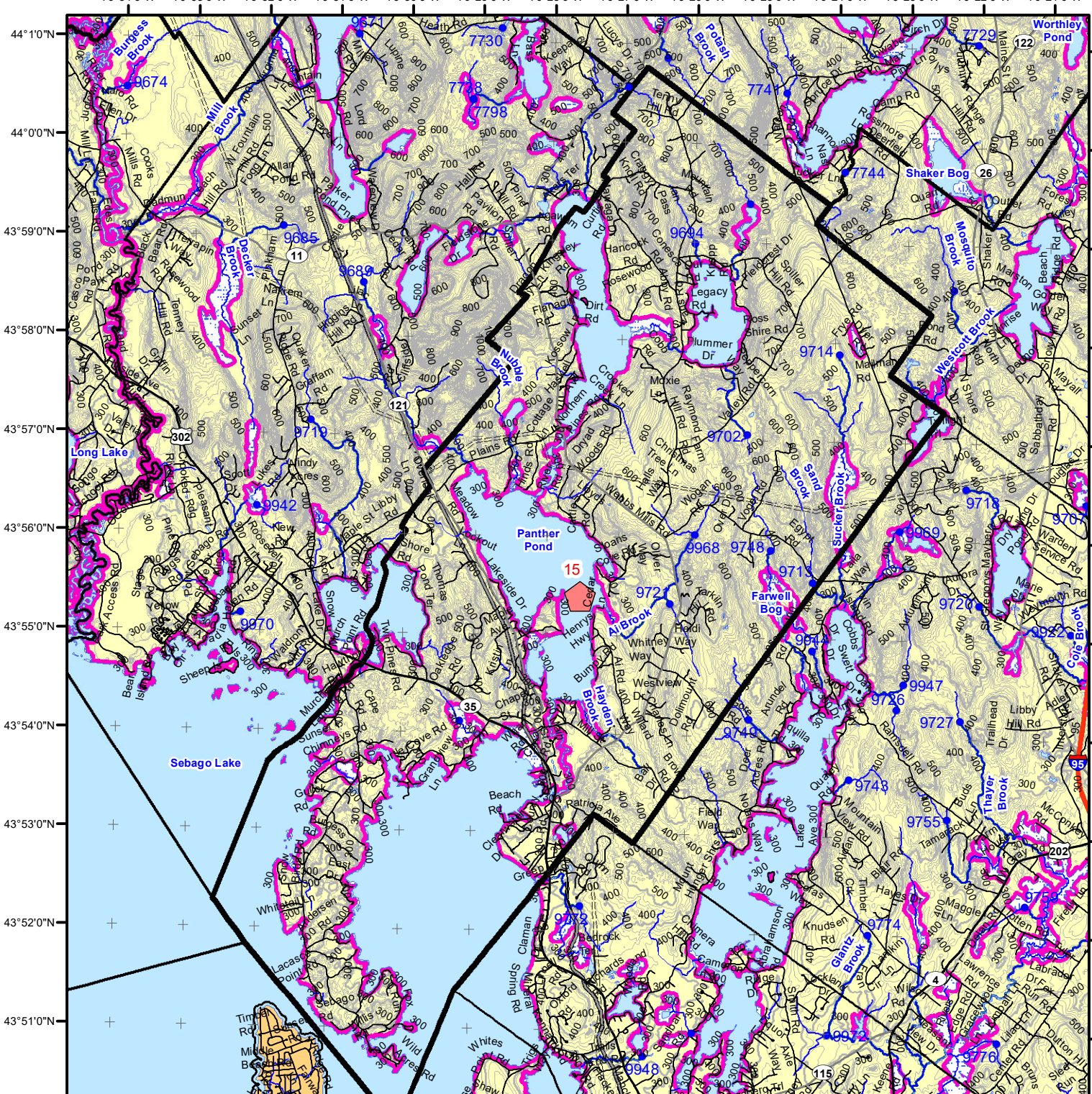


70°34'0"W 70°33'0"W 70°32'0"W 70°31'0"W 70°30'0"W 70°29'0"W 70°28'0"W 70°27'0"W 70°26'0"W 70°25'0"W 70°24'0"W 70°23'0"W 70°22'0"W 70°21'0"W



This map is ADVISORY, for planning purposes only. Actual ground conditions and water body locations determine where and how MFS timber harvesting rules apply. Contact the MFS for additional information/assistance from a MFS Forester.

### Statewide Standards

**Buffers**

- 250 Foot Buffer Zones
- Great Ponds
- Non-forested Wetlands greater than 10 acres
- Rivers below the 25 square mile drainage point
- Coastal Wetlands
- Tidal Waters
- Essential Wildlife Habitat (Least Tern, Roseate Tern, Piping Plover)
- 75 Foot Buffer Zones - Streams between the 300 acre drainage point and the 25 square mile drainage point
- Shoreline Integrity - Streams draining less than 300 acres, ponds and Non-forested Wetlands greater than 0.1 acres and less than 10 acres
- Shoreline Integrity also applies to UNMAPPED streams and wetlands.

**Habitat**

- Essential Wildlife Habitat (Least Tern, Roseate Tern, Piping Plover)

## Forest Operation Notification & Shoreland Area\* Map

# Raymond

Adoption Date  
1/3/2013

April 2023

0 2,000 4,000 8,000 12,000 Feet

\*See MFS Rule - Chapter 21 for additional information.

Department of Agriculture, Conservation and Forestry  
Maine Forest Service  
Forest Policy & Management

**Roads**

- Interstate
- US Highway
- State Highway
- 24k Roads

**Hydrology**

- Pond or Lake
- River
- Estuary

**Streams**

- Stream

**Contours**

- 20 ft
- 100 ft

**Utilities**

- Electric
- Pipeline
- Railroad
- Airfield

**Wetlands**

- Emergent or Marine Wetland
- Non-forested Wetlands Greater Than 10 acres (Lacustrine, Palustrine)

**Drainage Points**

- 300 Acre Drainage Point (start of the 75 ft buffer)
- 1234 - ID Number (location info)
- 25 Square Mile Drainage Point (start of the 250 ft buffer)
- 56 ID Number (location info)

LO Last Name \_\_\_\_\_

LO First Name \_\_\_\_\_

Prepared By \_\_\_\_\_

FONS # \_\_\_\_\_

Date \_\_\_\_\_

FON Town \_\_\_\_\_

Statewide Standards Rules do not apply (Town/MDEP Standards apply)

Statewide Standards Rules Apply

LUPC - Unorganized or Deorganized Town

Outside Maine

Data Source: Maine Office of GIS

G.T.Miller E:\s\sws page size april 2023.mxd

Not a legal survey map