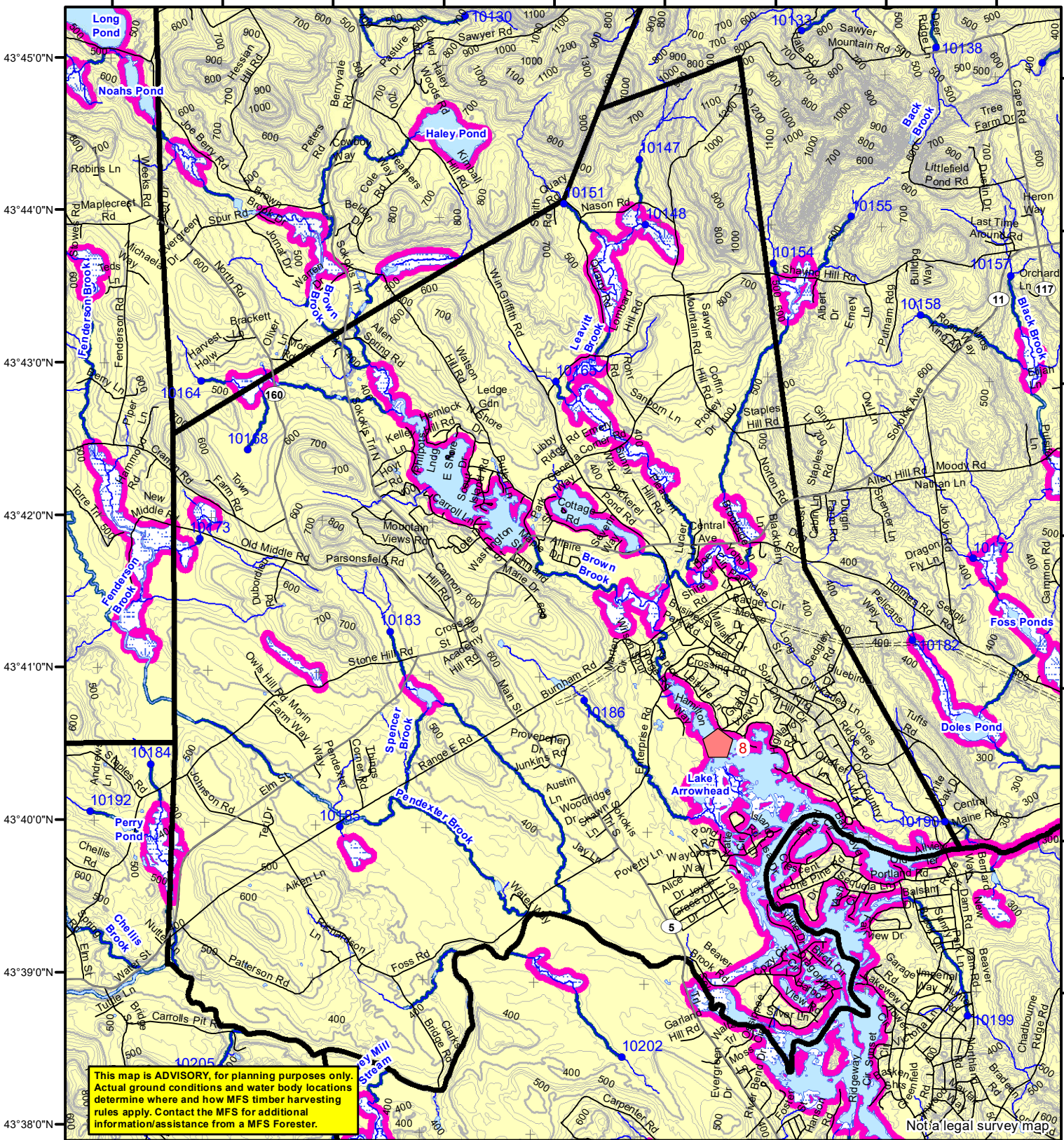


70°51'0"W 70°50'0"W 70°49'0"W 70°48'0"W 70°47'0"W 70°46'0"W 70°45'0"W 70°44'0"W 70°43'0"W



This map is **ADVISORY**, for planning purposes only. Actual ground conditions and water body locations determine where and how MFS timber harvesting rules apply. Contact the MFS for additional information/assistance from a MFS Forester.

**Statewide Standards**

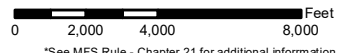
- Buffers**
  - 250 Foot Buffer Zones
    - Great Ponds
    - Non-forested Wetlands greater than 10 acres
    - Rivers below the 25 square mile drainage point
    - Coastal Wetlands
    - Tidal Waters
    - Essential Wildlife Habitat (Least Tern, Roseate Tern, Piping Plover)
  - 75 Foot Buffer Zones - Streams between the 300 acre drainage point and the 25 square mile drainage point
  - Shoreline Integrity - Streams draining less than 300 acres, ponds and Non-forested Wetlands greater than 0.1 acres and less than 10 acres
  - Shoreline Integrity also applies to UNMAPPED streams and wetlands.
- Habitat**
  - Essential Wildlife Habitat (Least Tern, Roseate Tern, Piping Plover)
- Drainage Points**
  - 300 Acre Drainage Point (start of the 75 ft buffer) 1234 - ID Number (location info)
  - 25 Square Mile Drainage Point (start of the 250 ft buffer) 56 ID Number (location info)
- Wetlands**
  - Emergent or Marine Wetland
  - Non-forested Wetlands Greater Than 10 acres (Lacustrine, Palustrine)

**Forest Operation Notification & Shoreland Area\* Map**

**Limerick**

Adoption Date  
1/8/2010

December 2022



\*See MFS Rule - Chapter 21 for additional information.

Department of Agriculture, Conservation and Forestry  
Maine Forest Service  
Forest Policy & Management

- Roads**
  - Interstate
  - US Highway
  - State Highway
  - 24k Roads
- Hydrology**
  - Pond or Lake
  - River
  - Estuary
- Streams**

**Contours**

- 20 ft
- 100 ft

**Utilities**

- Electric
- Pipeline
- Railroad
- Airfield

Data Source:  
Maine Office of GIS  
G.T.Miller E:\s\sws page size dec 2022.mxd

LO Last Name \_\_\_\_\_  
LO First Name \_\_\_\_\_  
Prepared By \_\_\_\_\_  
FONS # \_\_\_\_\_  
Date \_\_\_\_\_

- FON Town
- Statewide Standards Rules do not apply (Town/MDEP Standards apply)
- Statewide Standards Rules Apply
- LUPC - Unorganized or Deorganized Town
- Outside Maine