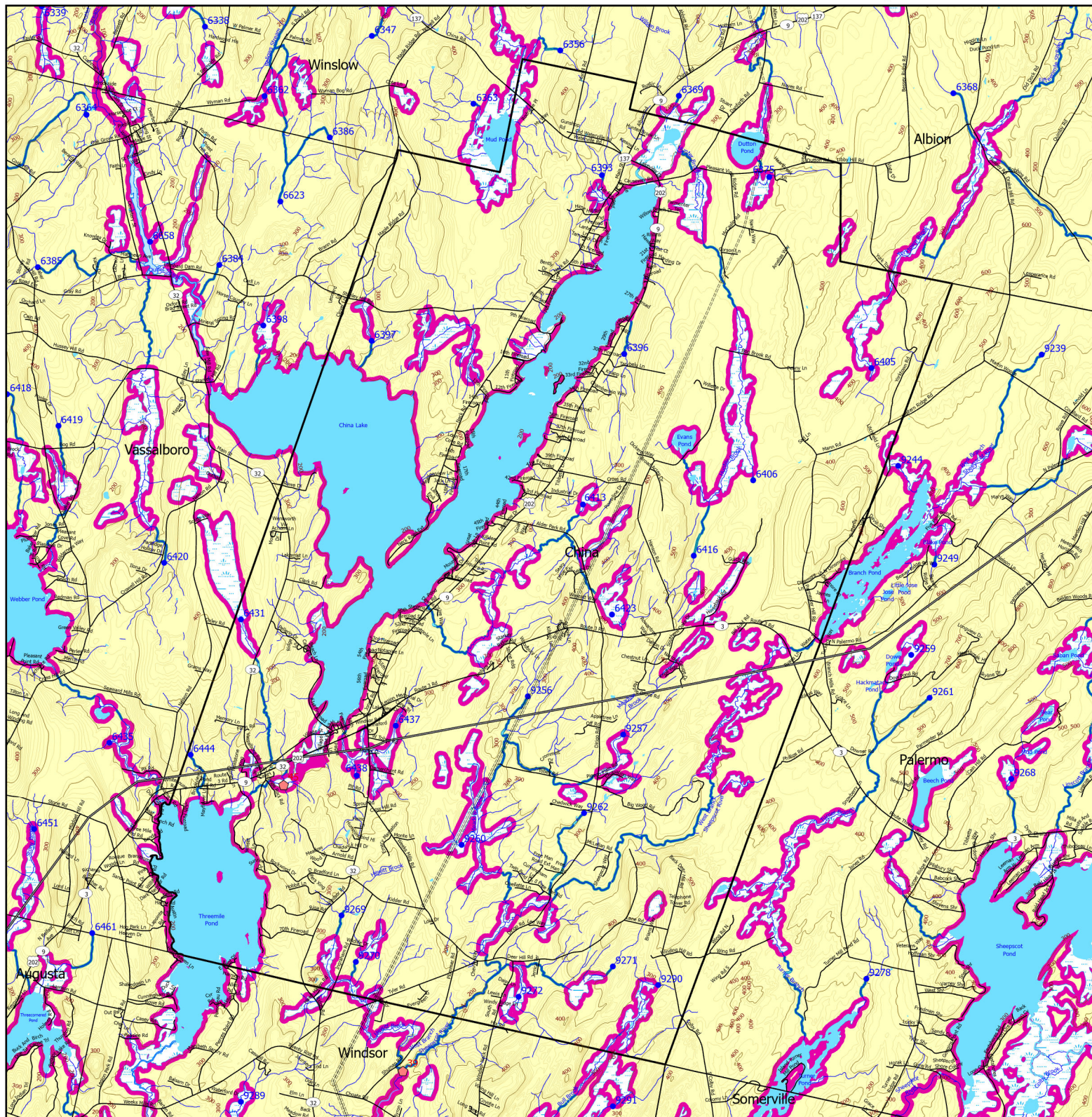


# Forest Operation Notification & Shoreland Area\* Map



This map is **ADVISORY**, for planning purposes only. Actual ground conditions and water body locations determine where and how MFS timber harvesting rules apply. Contact the MFS for additional information/assistance from a MFS Forester.

Department of Agriculture, Conservation and Forestry  
Maine Forest Service

## Maine Forest Service

For additional information, please contact the MFS at:  
1-207-287-2791 or 1-800-367-0223 (in-State)

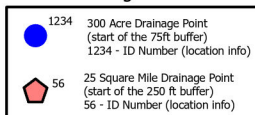
Email us at: [forestinfo@maine.gov](mailto:forestinfo@maine.gov)

or on the web at: [www.maineforestservice.gov](http://www.maineforestservice.gov)

## Forest Operation Notification & Shoreland Area\* Map China

Adoption Date  
6/10/2025

### Drainage Points



### Wetlands

Non-forested Wetlands Greater Than 10 acres  
(Lacustrine, Palustrine)  
Emergent or Marine Wetland

### Buffers

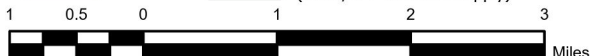
250 Foot Buffer Zones  
Great Ponds  
Non-forested Wetlands greater than 10 acres  
Rivers below the 25 square mile drainage point  
Coastal wetlands  
Tidal Waters  
75 Foot Buffer Zones  
Streams between the 300 acre drainage point and the 25 square mile drainage point  
Shoreline Integrity - Streams draining less than 300 acres, ponds and non-forested wetlands greater than 0.1 acres and less than 10 acres

August 2025

SWS Town FON Town  
Statewide Standard Rules do not apply  
(Town/DEP Standards apply)

LUPC - Unorganized or  
Deorganized Town

Outside Maine



\*See MFS Rule - Chapter 21 for additional information.

Greg.T.Miller C:\MFS\gis\_data\SWS\_arcomp\SWS Town Final Map 11x17\SWS Town Final Map 11x17.aprx