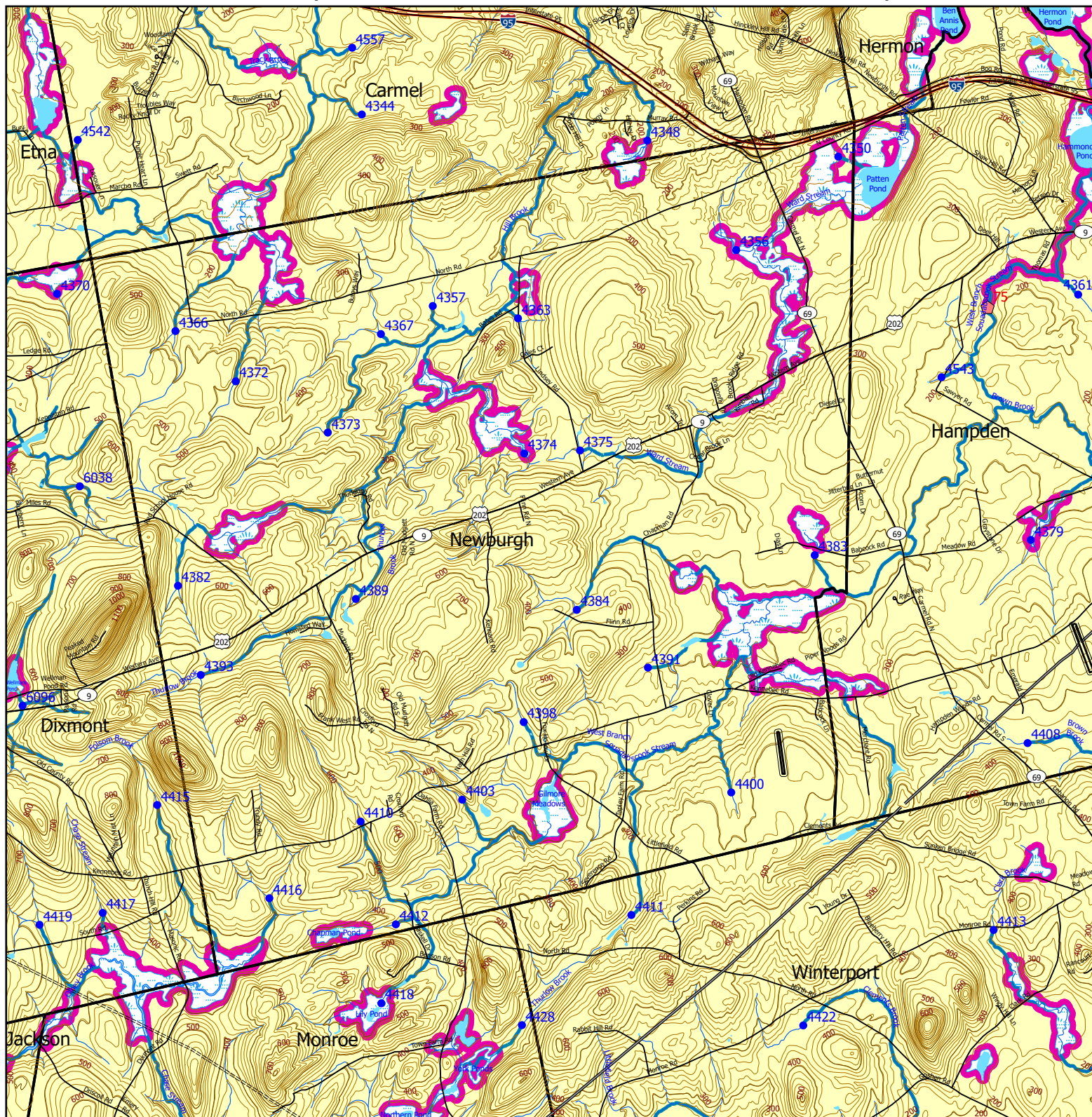


# Forest Operation Notification & Shoreland Area\* Map



This map is **ADVISORY**, for planning purposes only. Actual ground conditions and water body locations determine where and how MFS timber harvesting rules apply. Contact the MFS for additional information/assistance from a MFS Forester.

## Forest Operation Notification & Shoreland Area\* Map Newburgh

Adoption Date  
6/13/2024

Department of Agriculture, Conservation and Forestry  
Maine Forest Service

### Maine Forest Service

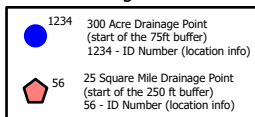
For additional information, please contact the MFS at:  
1-207-287-2791 or 1-800-367-0223 (in-State)

Email us at: [forestinfo@maine.gov](mailto:forestinfo@maine.gov)

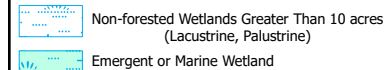
or on the web at: [www.maineforestservice.gov](http://www.maineforestservice.gov)



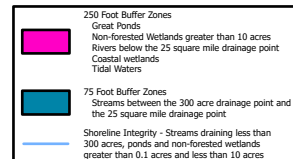
### Drainage Points



### Wetlands



### Buffers



July 2025



SWS Town



FON Town

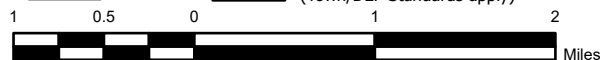
Statewide Standard Rules do not apply  
(Town/DEP Standards apply)



LUPC - Unorganized or  
Deorganized Town



Outside Maine



\*See MFS Rule - Chapter 21 for additional information.