

Working Forest Conservation Easements

What are they and how do they work?

Kennebec Woodland Partnership Conference

Winthrop, ME

October 21, 2010

Jake Metzler

Forestland Stewardship Manager

Forest Society of Maine



Forest Society of Maine

What we do

- Conservation of Maine's forestlands to sustain the economic, ecological, cultural, and recreational values of the Maine woods.

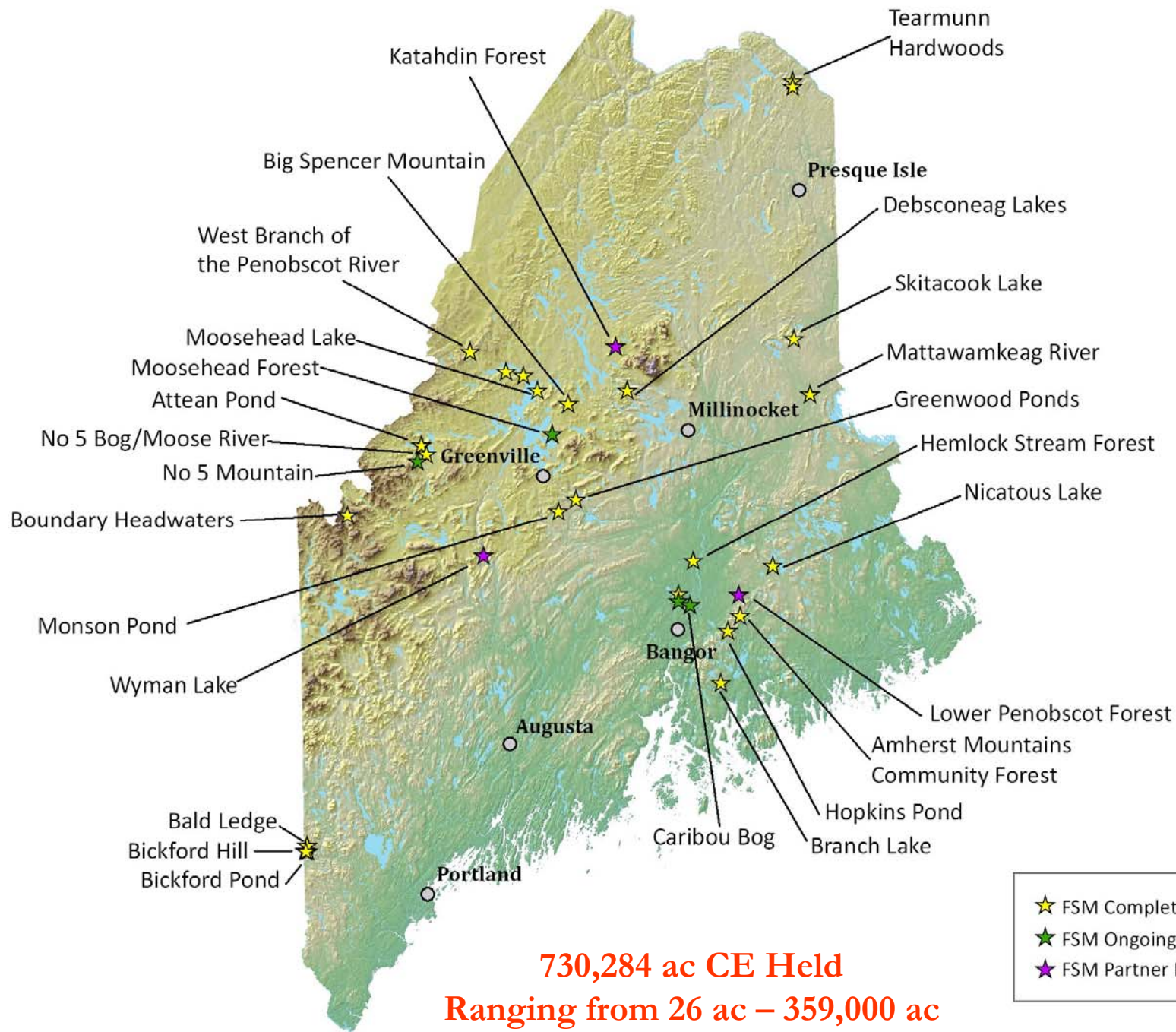


Forest Society of Maine

How we do it

- Focus efforts to promote conservation of functional, working forest landscapes with multiple social and ecological values.

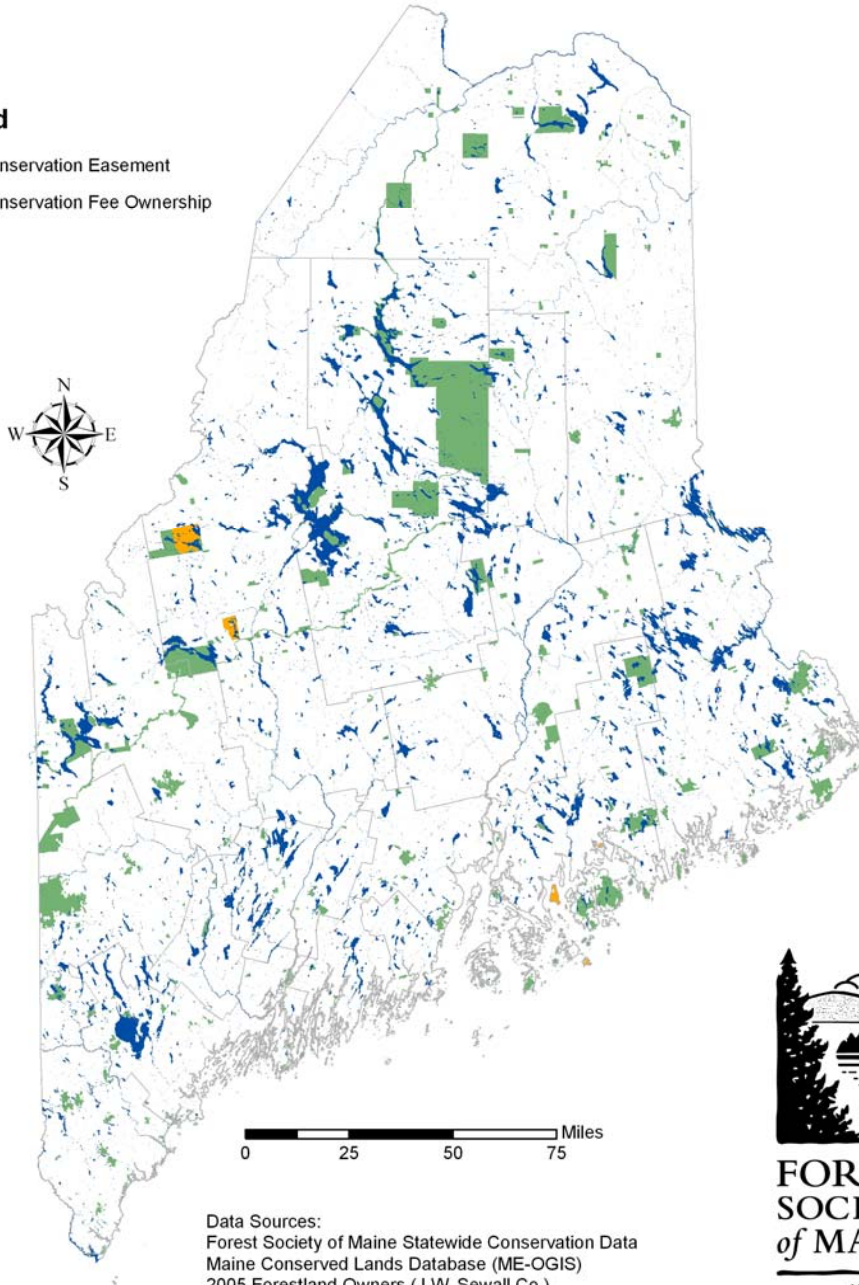




Maine Conservation Lands Prior to 1997

Legend

- Conservation Easement
- Conservation Fee Ownership



Approximately:
50,000 – 75,000 ac



**FOREST
SOCIETY
of MAINE**

Map: 7/18/2006

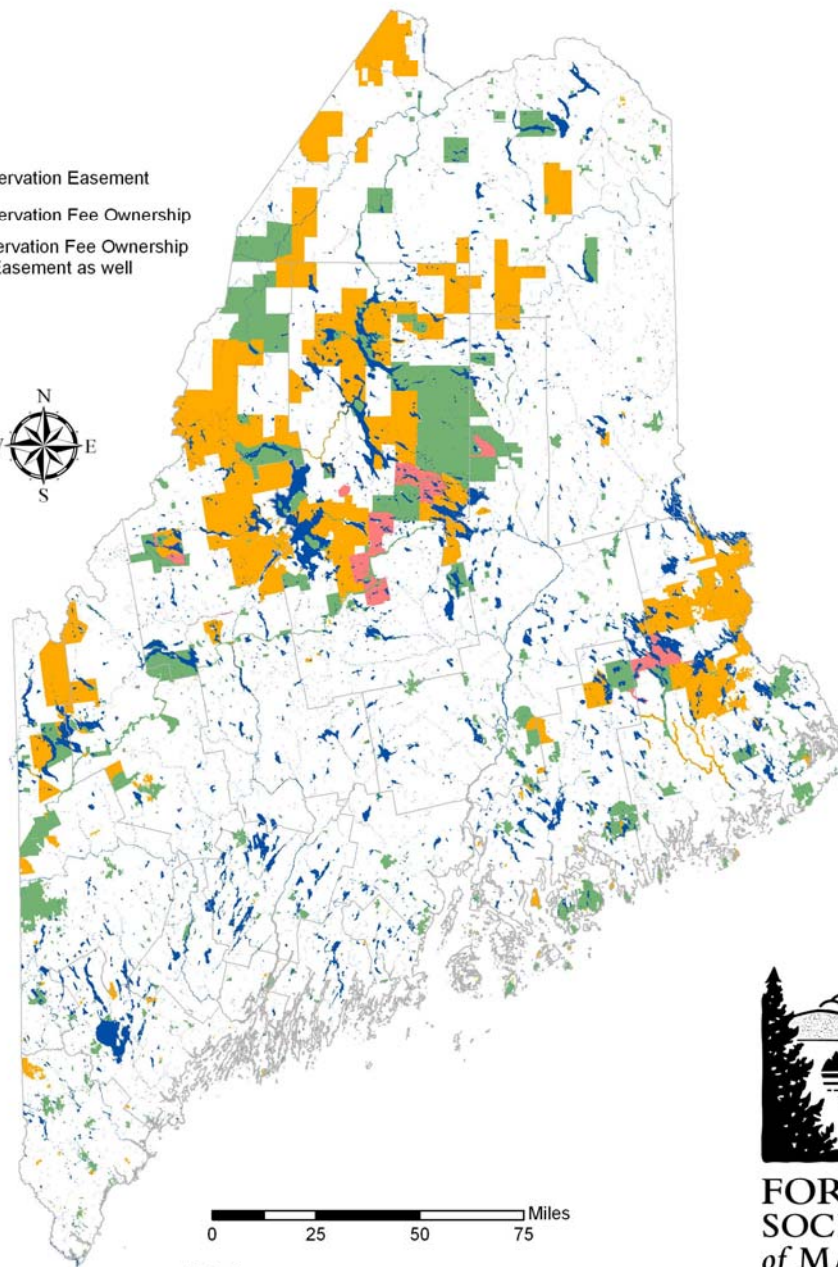
Data Sources:
Forest Society of Maine Statewide Conservation Data
Maine Conserved Lands Database (ME-OGIS)
2005 Forestland Owners (J.W. Sewall Co.)

Over
2 million ac

Maine Conservation Lands 2009

Legend

- Conservation Easement
- Conservation Fee Ownership
- Conservation Fee Ownership with Easement as well



Data Source:
Forest Society of Maine Statewide Conservation Data



**FOREST
SOCIETY
of MAINE**

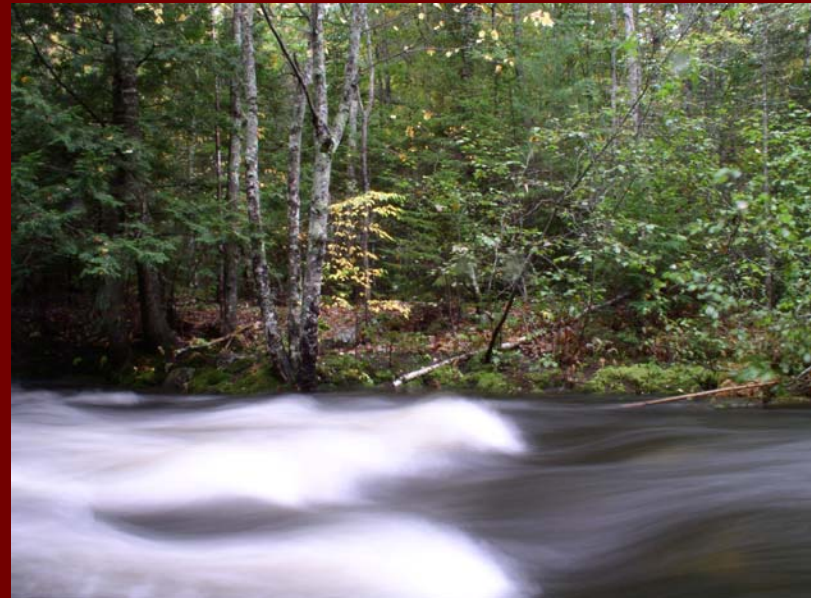
Map: 9/30/2009

Conservation Easements

- *What are they?*
 - Legally binding deed restrictions
 - Defines limits/guidelines or terminates certain property rights
 - Methods of creation
 - Donated, Purchased, Regulatory
- Partnership between landowner and easement holder
- Tailored to the property and the goals of the project

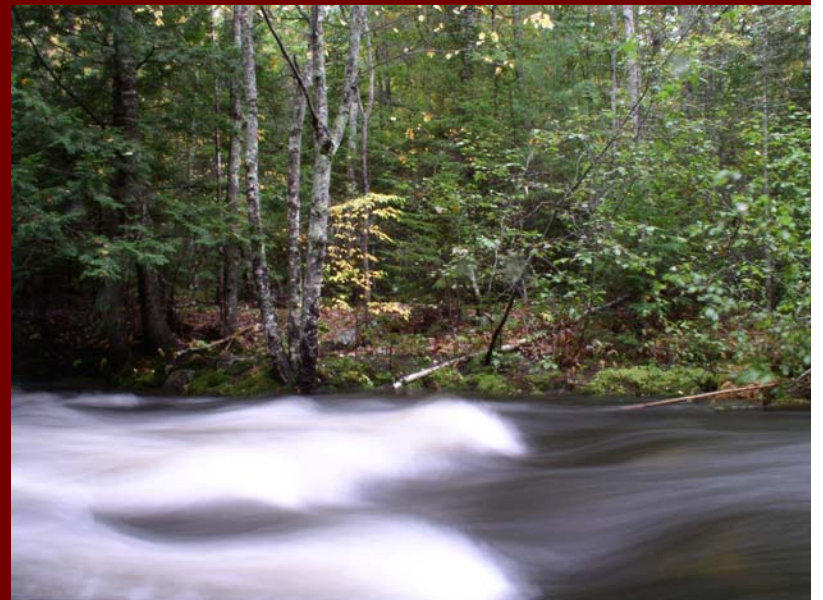
Conservation Easements

- What is a “Working Forest Easement” ?
 - Wide variety of restrictions
 - NOT EVERY EASEMENT IS THE SAME!!!!
 - Most basic conservation easements restrict or eliminate development rights and include certain other prescriptive measures.



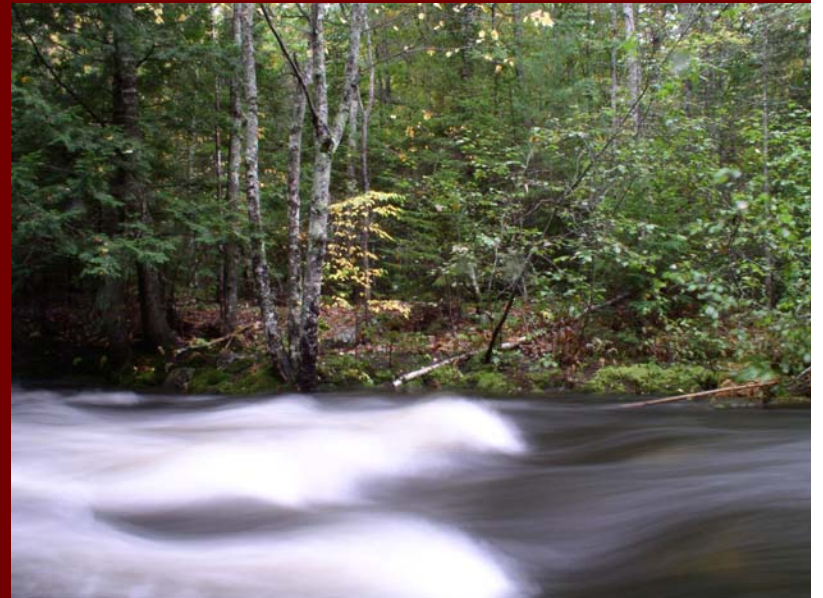
Conservation Easements

- What is a “Working Forest Easement” ?
 - Wide variety of restrictions
 - NOT EVERY EASEMENT IS THE SAME!!!!
 - Most complex conservation easements define goals for management such as biodiversity, wildlife habitat, recreational uses, etc.



Conservation Easements

- Who holds Easements?
 - Private non-profit land trusts
 - Specialized Focus
 - State agencies
 - Federal agencies



Easement Components

- Baseline Documentation
- Stewardship
- Landowner Relations and Reporting



Easement Stewardship

TYPICAL COMPONENTS:

- Ground visits



Easement Stewardship

TYPICAL COMPONENTS:

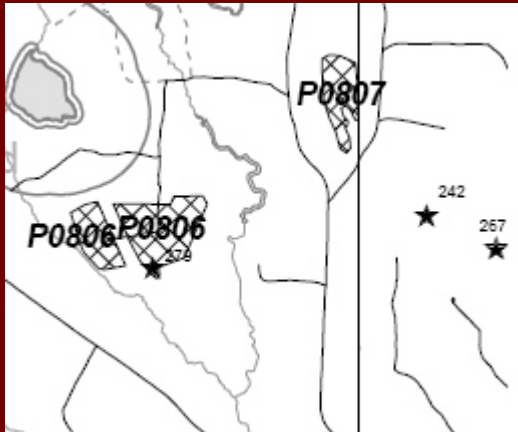
- Annual flights



Easement Stewardship

TYPICAL COMPONENTS:

- Annual Meetings



Planned Harvests



Completed Activities

Product Grouping	<<<< Actual Harvest Volume (Cds) >>>>		
	Report Year	<<<< Since Plan Start >>>> Cumulative	Avg. Annual
Hardwood Pulp	65,766	389,474	77,895
Hardwood Logs	5,294	38,034	7,607
Total HW	71,060	427,508	85,502
Other Softwood Pulp	2,880	7,291	1,458
Other Softwood Logs	30	295	59
Spruce Fir Landrun	60,872	299,458	59,892
Total SW	63,782	307,043	61,409
Total Harvest Volume	134,842	734,551	146,910
Volume per Acre	15.3	12.7	12.7

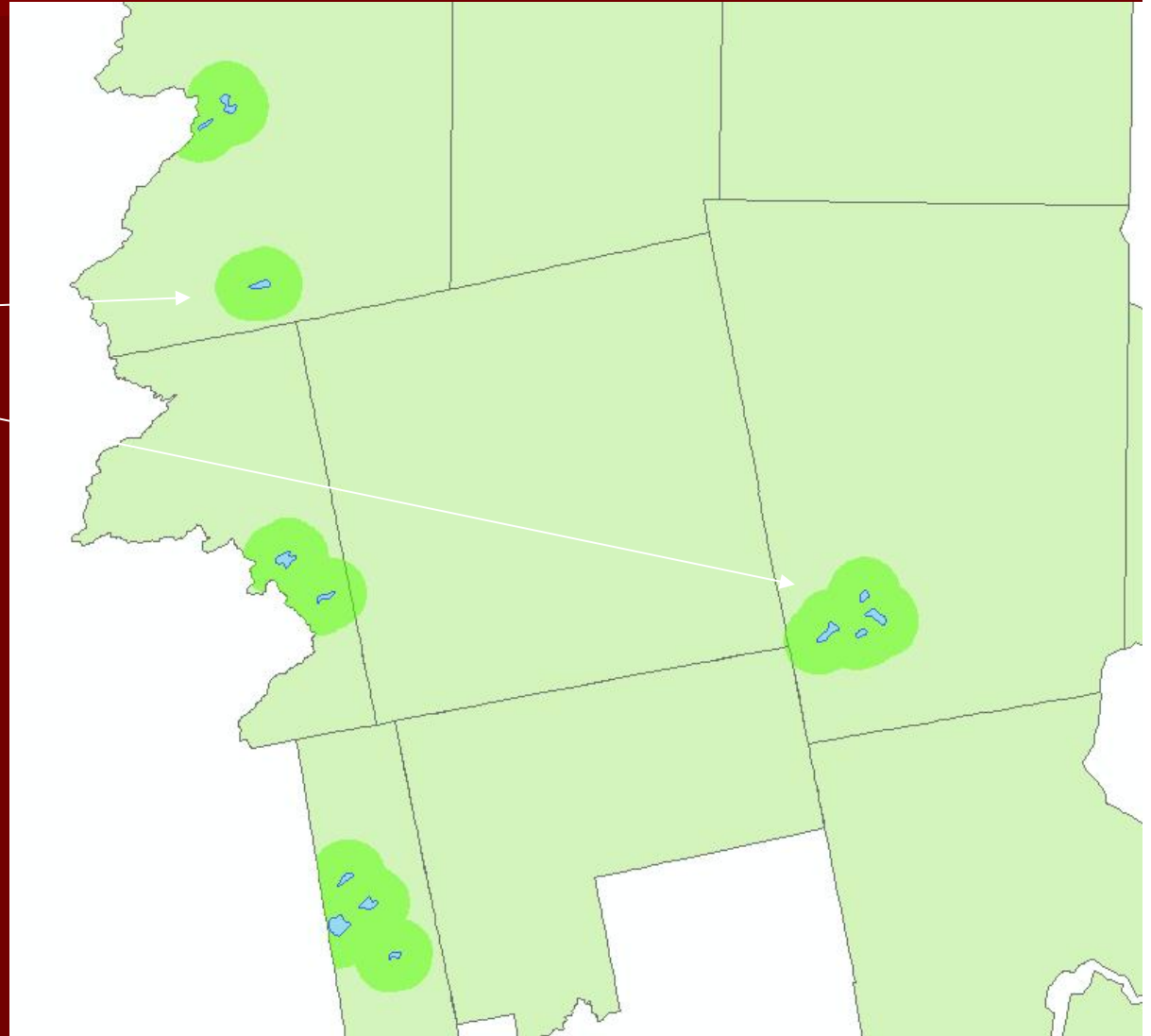
Harvest Volume Reporting

Easement Stewardship

TYPICAL COMPONENTS:

- GIS Analysis

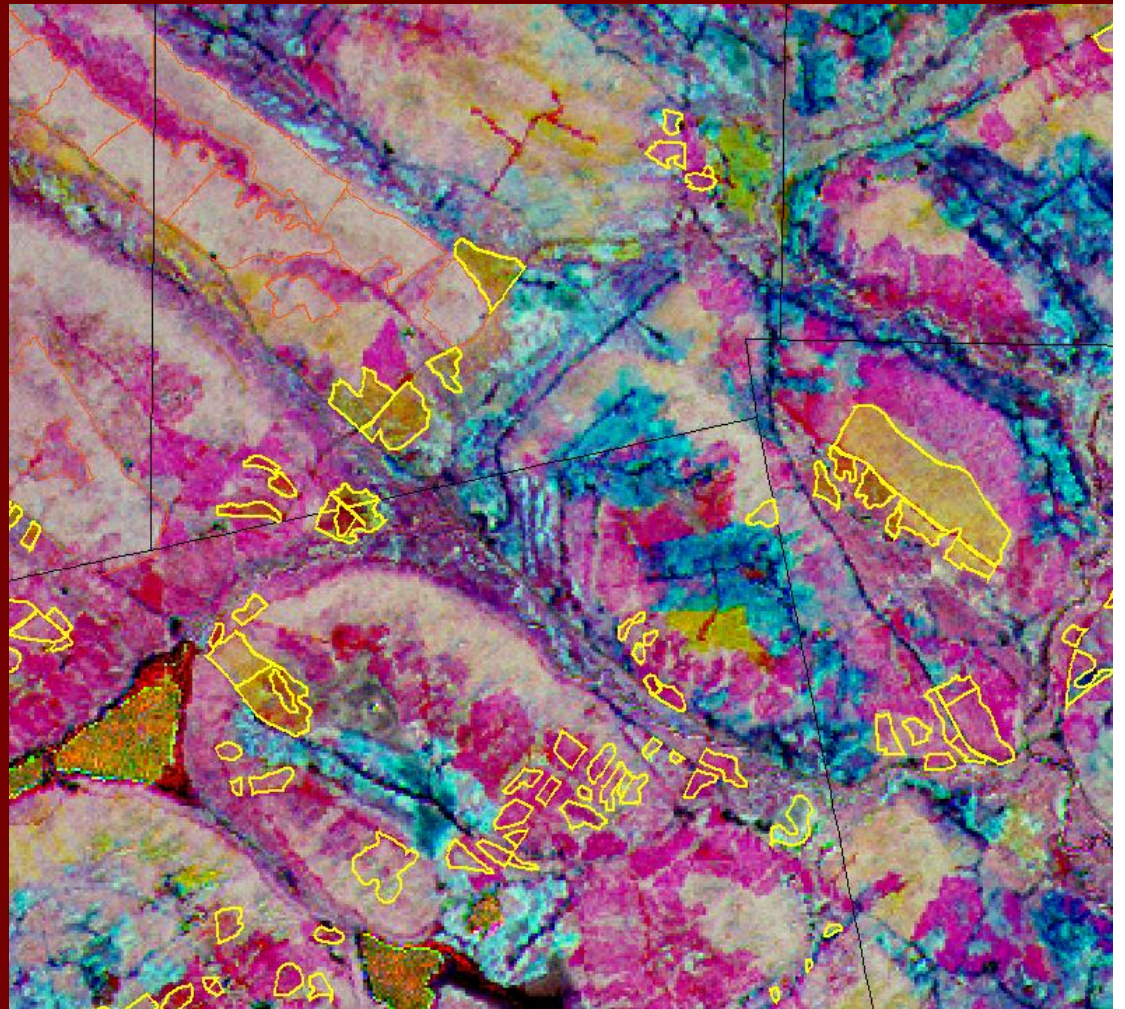
½ Mile
Buffers



Easement Stewardship

TYPICAL COMPONENTS:

- Remote sensing (for larger easements)



Grantor Responsibility

- Operate within the terms of the Easement
- Follow all laws



Grantee Responsibility

- Work with landowner to ensure terms are being met
- Be PROACTIVE



Conclusions

- There will be more acres under Easement in the future
- Excellent tool to maintain values of Maine's Forests
- A great option for both large and small scale ownerships
 - Landowners interested in income
 - Tax incentives continue to favor landowners willing to donate easements
 - Maintain your values for management for perpetuity





THANKS

JAKE@FSMAINE.ORG