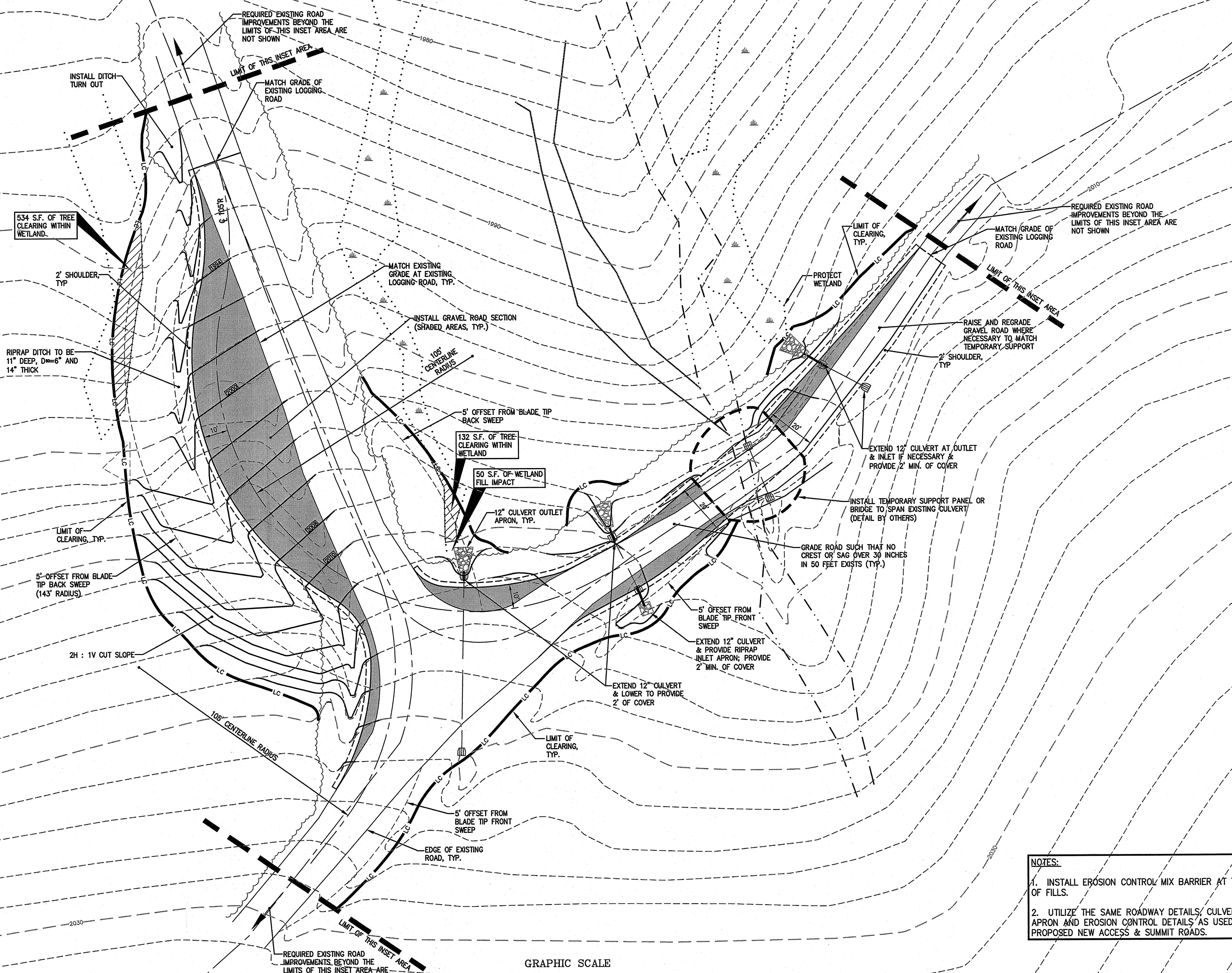
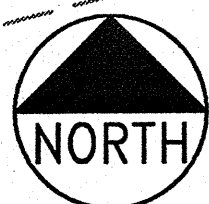


**APPENDIX 2.8**

**Inset Area Detail (C-40 – C-43)**



534 S.F. OF TREE CLEARING WITHIN WETLAND.

RIPRAP DITCH TO BE 11" DEEP, D=6" AND 14" THICK

5' OFFSET FROM BLADE TIP BACK SWEEP (143' RADIUS)

2H : 1V CUT SLOPE

108' CENTERLINE RADIUS

5' OFFSET FROM BLADE TIP FRONT SWEEP

5' OFFSET FROM BLADE TIP FRONT SWEEP

5' OFFSET FROM BLADE TIP FRONT SWEEP

REQUIRED EXISTING ROAD IMPROVEMENTS BEYOND THE LIMITS OF THIS INSET AREA ARE NOT SHOWN

MATCH GRADE OF EXISTING LOGGING ROAD

MATCH EXISTING GRADE AT EXISTING LOGGING ROAD, TYP.

INSTALL GRAVEL ROAD SECTION (SHADED AREAS, TYP.)

108' CENTERLINE RADIUS

5' OFFSET FROM BLADE TIP BACK SWEEP

132 S.F. OF TREE CLEARING WITHIN WETLAND

50 S.F. OF WETLAND FILL IMPACT

12" CULVERT OUTLET APRON, TYP.

5' OFFSET FROM BLADE TIP FRONT SWEEP

5' OFFSET FROM BLADE TIP FRONT SWEEP

5' OFFSET FROM BLADE TIP FRONT SWEEP

5' OFFSET FROM BLADE TIP FRONT SWEEP

5' OFFSET FROM BLADE TIP FRONT SWEEP

5' OFFSET FROM BLADE TIP FRONT SWEEP

5' OFFSET FROM BLADE TIP FRONT SWEEP

5' OFFSET FROM BLADE TIP FRONT SWEEP

5' OFFSET FROM BLADE TIP FRONT SWEEP

5' OFFSET FROM BLADE TIP FRONT SWEEP

5' OFFSET FROM BLADE TIP FRONT SWEEP

5' OFFSET FROM BLADE TIP FRONT SWEEP

5' OFFSET FROM BLADE TIP FRONT SWEEP

5' OFFSET FROM BLADE TIP FRONT SWEEP

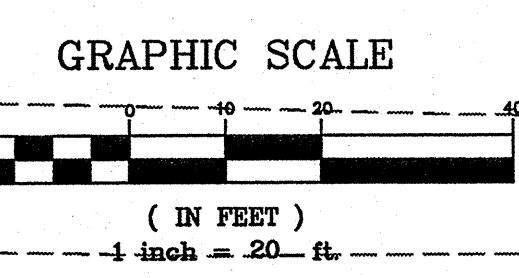
5' OFFSET FROM BLADE TIP FRONT SWEEP

5' OFFSET FROM BLADE TIP FRONT SWEEP

5' OFFSET FROM BLADE TIP FRONT SWEEP

5' OFFSET FROM BLADE TIP FRONT SWEEP

5' OFFSET FROM BLADE TIP FRONT SWEEP



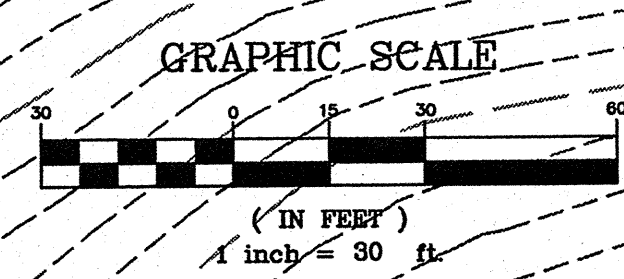
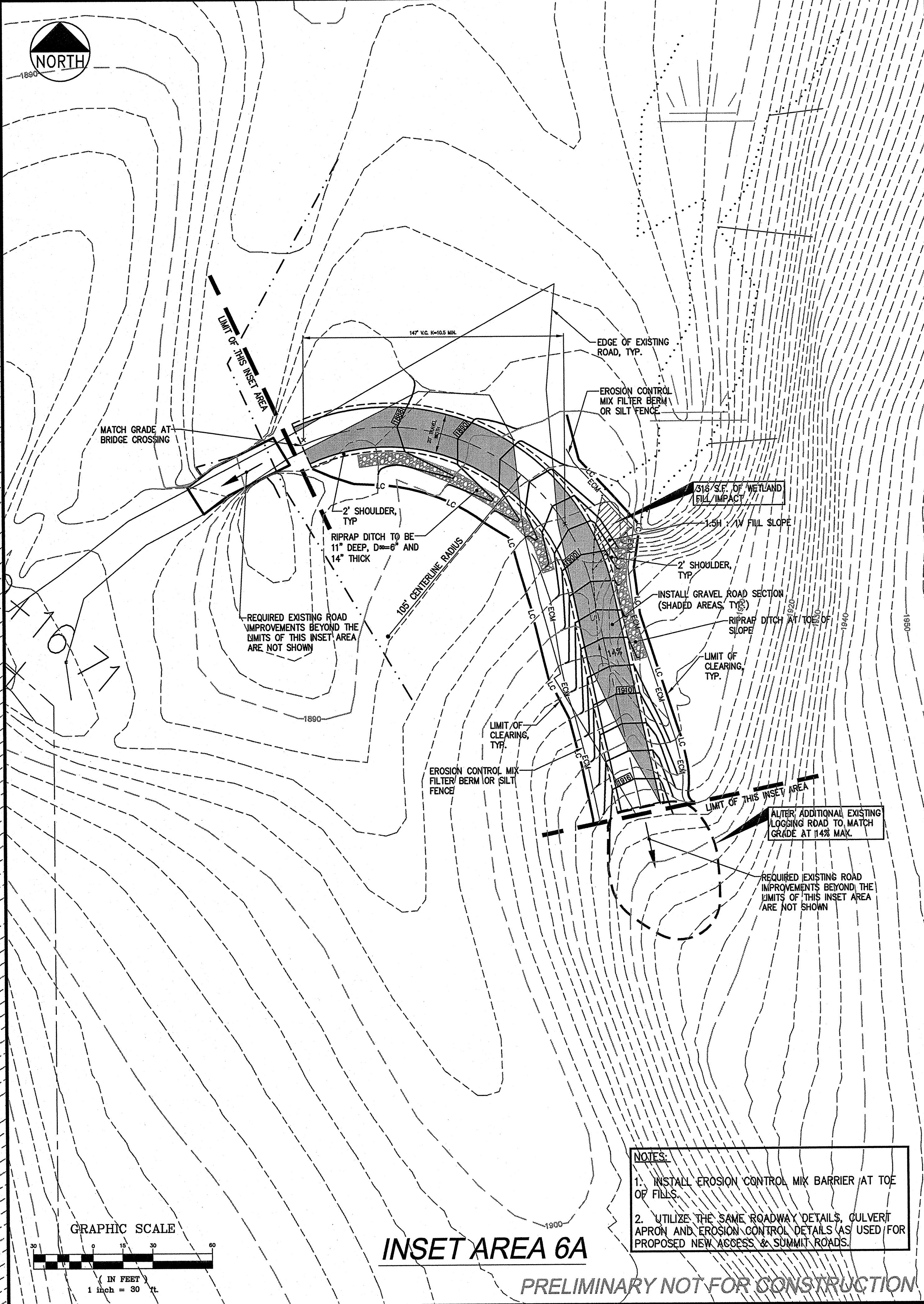
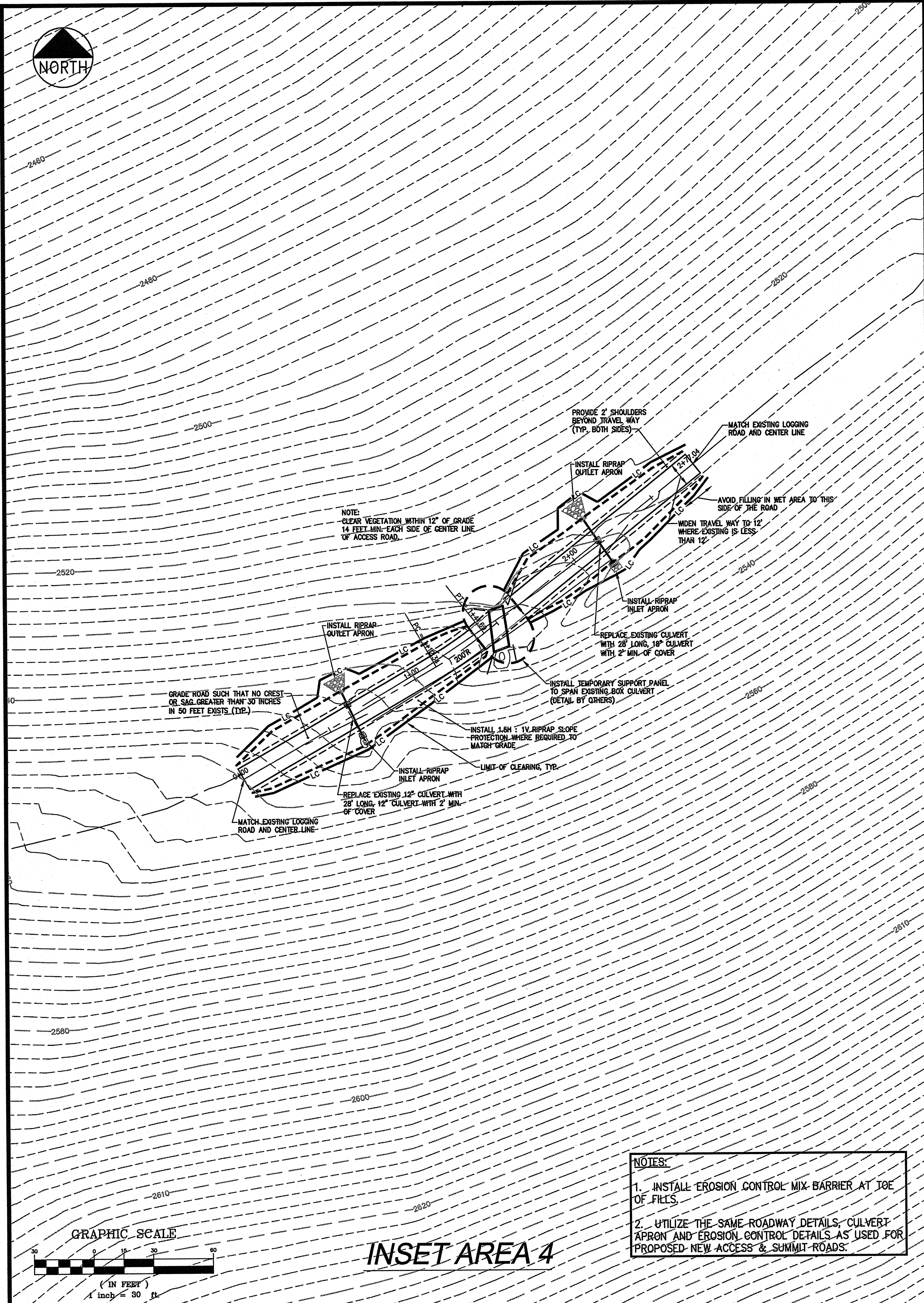
**NOTES:**  
 1. INSTALL EROSION CONTROL MIX BARRIER AT TOE OF FILLS.  
 2. UTILIZE THE SAME ROADWAY DETAILS, CULVERT APRON AND EROSION CONTROL DETAILS AS USED FOR PROPOSED NEW ACCESS & SUMMIT ROADS.

PRELIMINARY NOT FOR CONSTRUCTION

G:\11708.09\CONCEPT\1708.09-INSETS.dwg, C-40, INSET 3, 6/28/2007 8:03:35 AM, Jordan

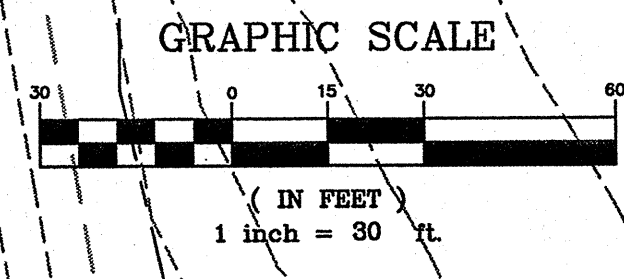
<b>BLACK NUBBLE WIND FARM PROJECT</b> <b>MAINE MOUNTAIN POWER LLC</b>		<b>INSET AREA 3</b> <b>LAYOUT, GRADING AND</b> <b>EROSION CONTROL PLAN</b>	
		DRAWN: CDD DESIGNED: DDA FILE NAME: 1708.09-INSETS	SCALE: AS NOTED JOB NO. 1708.09
DeLuca-Hoffman Associates, Inc. 778 MAIN STREET, SUITE 8 SOUTH PORTLAND, ME 04106 207.775.1121 www.delucahoffman.com		M.A. Mortenson Company 700 Meadow Lane North Minneapolis, MN 55440	
SHEET		NO. 3 DATE 06.22.07	REVISIONS 2 12.06.06 DESIGN SUBMISSION FOR CLIENT REVIEW 1 10.31.06 DRAFT SUBMISSION FOR CLIENT REVIEW - PARTIAL SET

C-40



**INSET AREA 4**

**NOTES:**  
 1. INSTALL EROSION CONTROL MIX BARRIER AT TOE OF FILLS.  
 2. UTILIZE THE SAME ROADWAY DETAILS, CULVERT APRON AND EROSION CONTROL DETAILS AS USED FOR PROPOSED NEW ACCESS & SUMMIT ROADS.



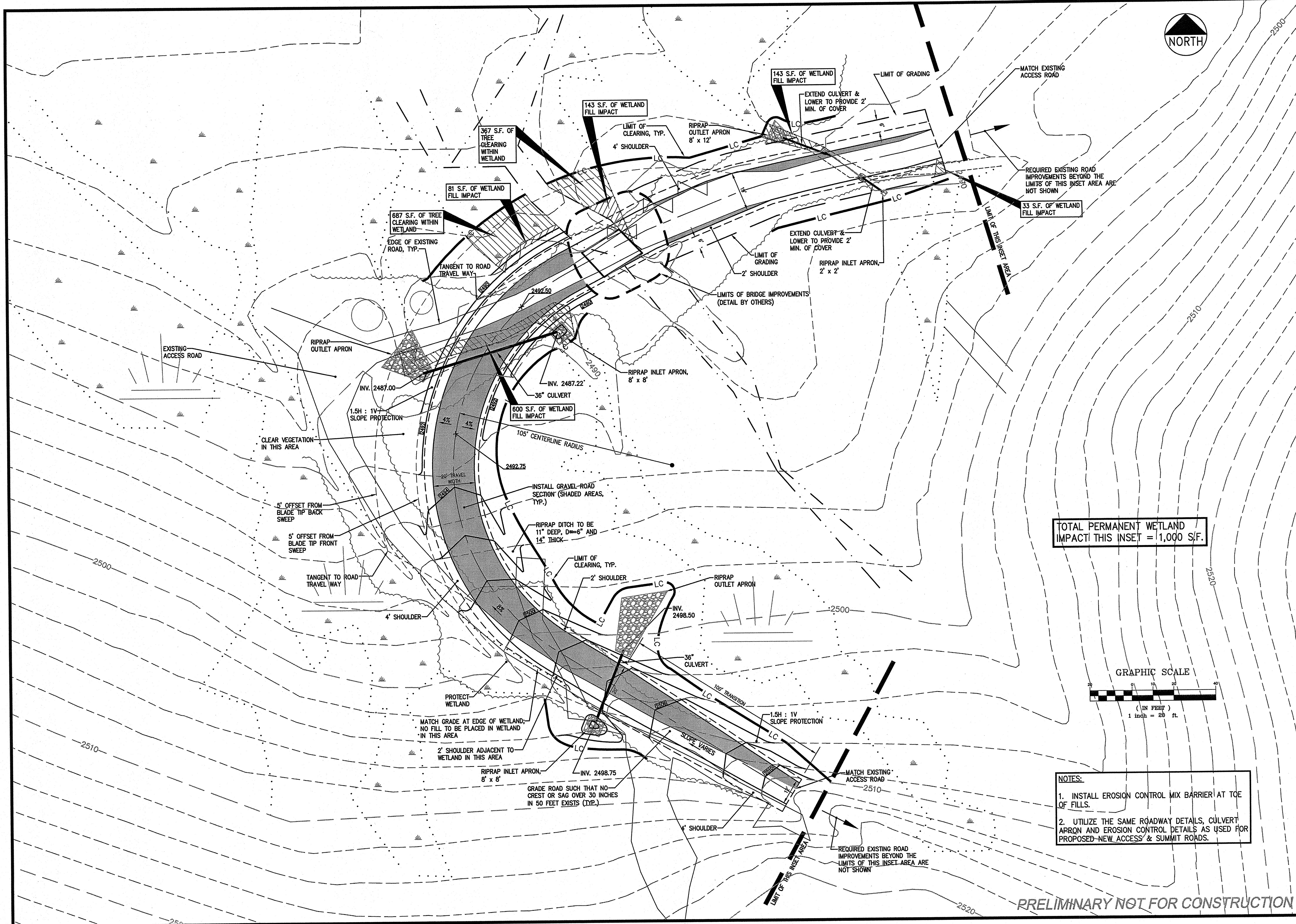
**INSET AREA 6A**

**NOTES:**  
 1. INSTALL EROSION CONTROL MIX BARRIER AT TOE OF FILLS.  
 2. UTILIZE THE SAME ROADWAY DETAILS, CULVERT APRON AND EROSION CONTROL DETAILS AS USED FOR PROPOSED NEW ACCESS & SUMMIT ROADS.

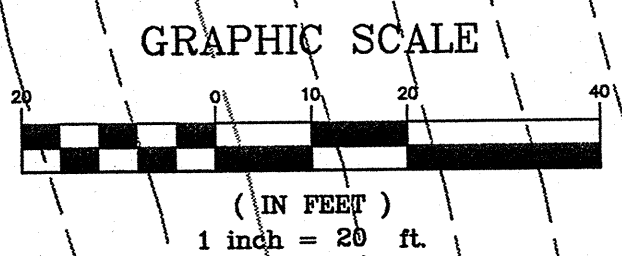
PRELIMINARY NOT FOR CONSTRUCTION

<b>INSET AREAS 4 AND 6A LAYOUT, GRADING AND EROSION CONTROL PLAN</b>		NO.	DATE	REVISIONS
NO.	DATE	REVISIONS		
3	06.22.07	REVISED FOR BLACK NUBBLE ONLY PROJECT		
2	12.08.06	DESIGN SUBMISSION FOR CLIENT REVIEW		
1	10.31.06	DRAFT SUBMISSION FOR CLIENT REVIEW - PARTIAL SET		
DRAWN: CDD		SCALE: AS NOTED		
DESIGNED: DDA		JOB NO. 1708.00		
FILE NAME: 1708.00-INSETS				
<b>MORTENSON</b>		M.A. Mortenson Company 700 Meadow Lane North Minneapolis, MN 55440		
<b>BLACK NUBBLE WIND FARM PROJECT MAINE MOUNTAIN POWER LLC</b>				
SHEET		<b>DeLuca-Hoffman Associates, Inc.</b> 778 MAIN STREET, SUITE 8 SOUTH PORTLAND, ME 04106 207.775.1121 www.delucahoffman.com		
<b>C-41</b>				

G:\1708.00\CONCEPT\1708.00-INSETS.dwg, C-41 INSETS 4 & 6A, 6/29/07 12:24:55 PM, DDDw6



TOTAL PERMANENT WETLAND IMPACT THIS INSET = 1,000 S.F.



- NOTES:
1. INSTALL EROSION CONTROL MIX BARRIER AT TOE OF FILLS.
  2. UTILIZE THE SAME ROADWAY DETAILS, CULVERT APRON AND EROSION CONTROL DETAILS AS USED FOR PROPOSED NEW ACCESS & SUMMIT ROADS.

PRELIMINARY NOT FOR CONSTRUCTION

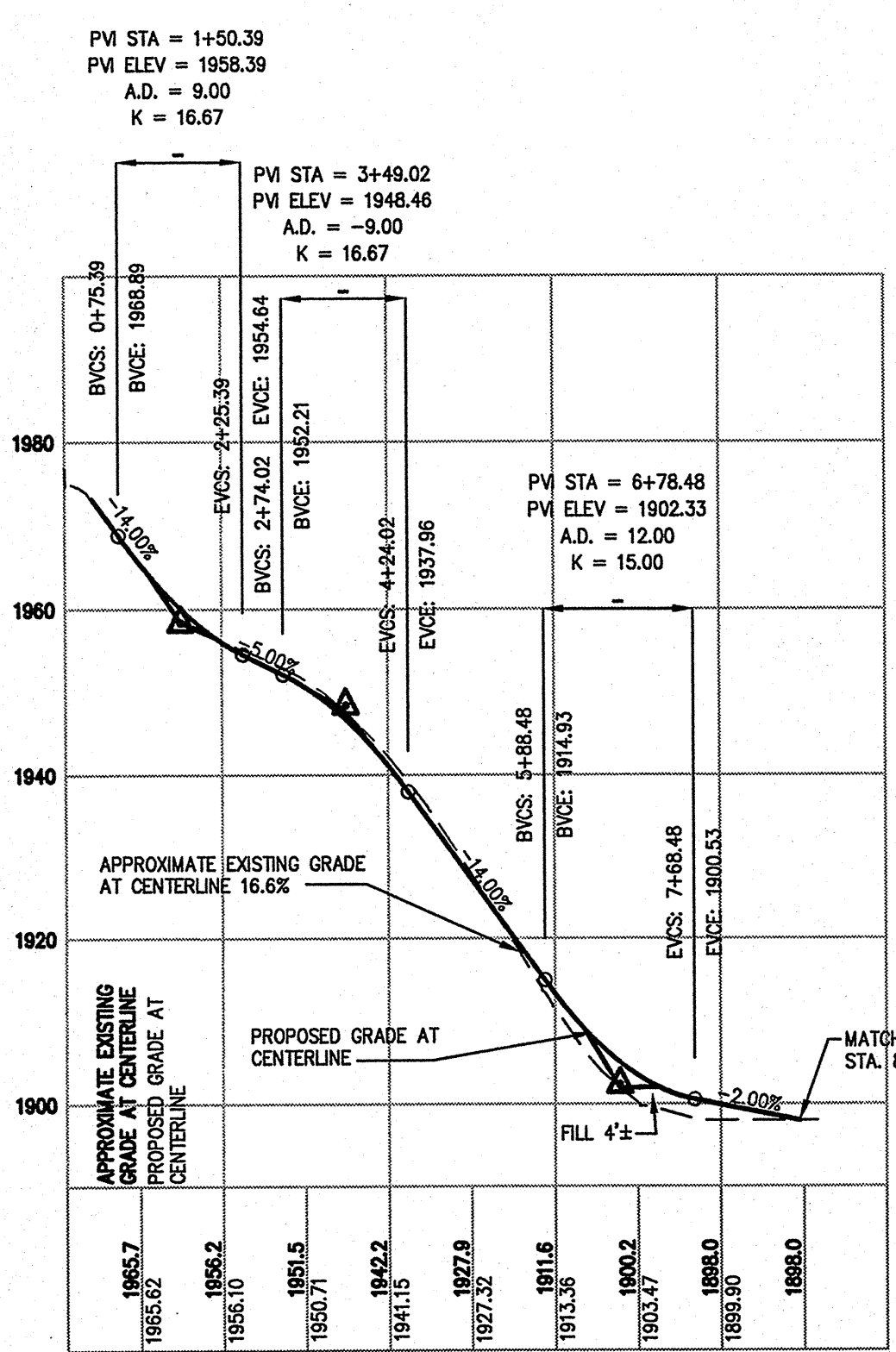
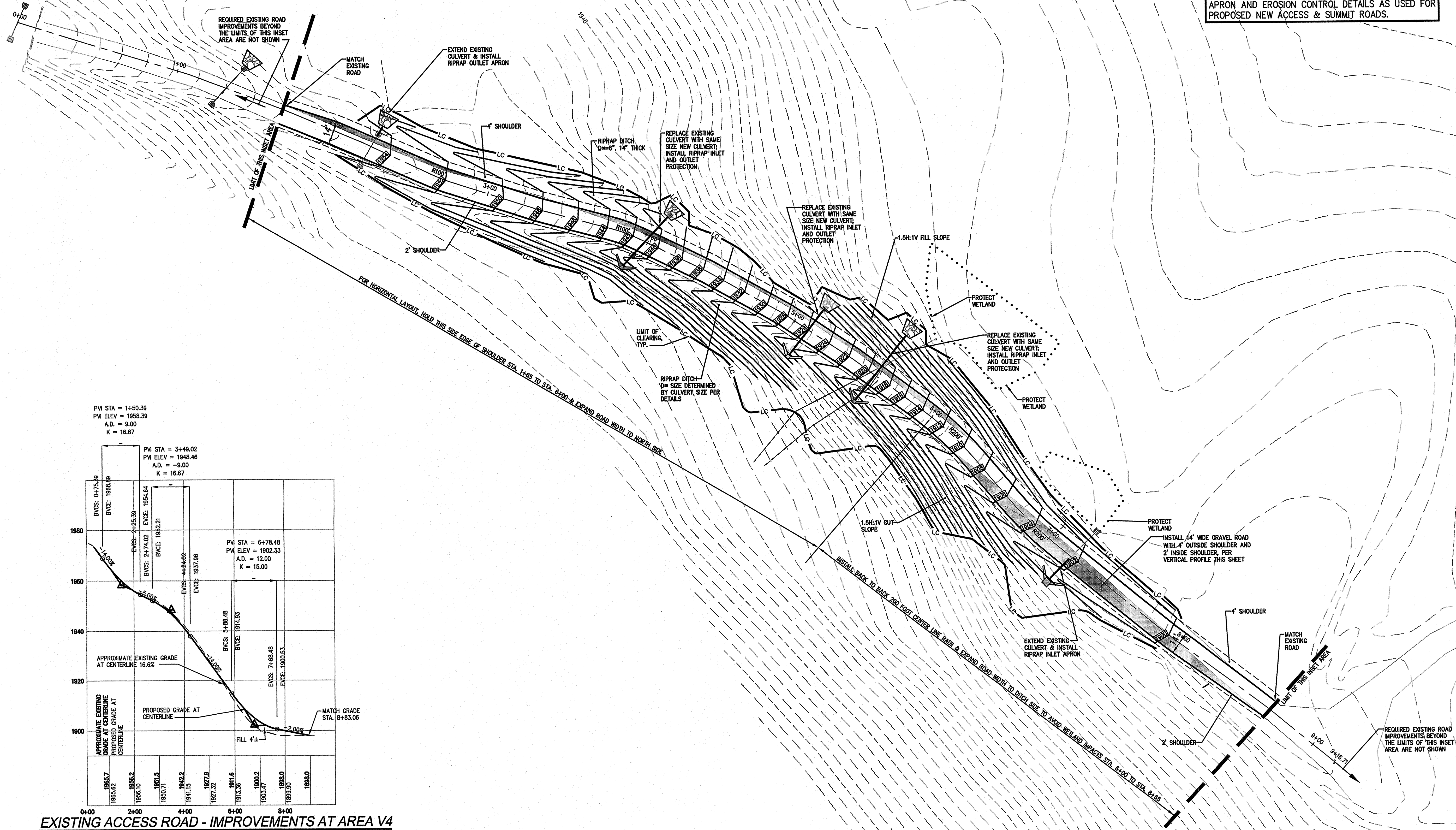
<b>BLACK NUBBLE WIND FARM PROJECT</b> <b>MAINE MOUNTAIN POWER LLC</b>		<b>INSET AREA 5</b> <b>LAYOUT, GRADING AND</b> <b>EROSION CONTROL PLAN</b>	
		DRAWN: CDD DESIGNED: DDA FILE NAME: 1708.09-INSETS	SCALE: AS NOTED JOB NO. 1708.09 <b>MORTENSON</b> M.A. Mortenson Company 700 Meadow Lane North Minneapolis, MN 55440
SHEET		NO.	DATE
<b>C-42</b>		3 2 1	06.22.07 12.06.06 10.31.06
REVISIONS		REVISED FOR BLACK NUBBLE ONLY PROJECT DESIGN SUBMISSION FOR CLIENT REVIEW DRAFT SUBMISSION FOR CLIENT REVIEW - PARTIAL SET	NO.

G:\1708.09\CONCEPT\1708.09-INSETS.dwg, C-42 INSET 5, 6/28/2007 12:26:57 PM, D:\dwg

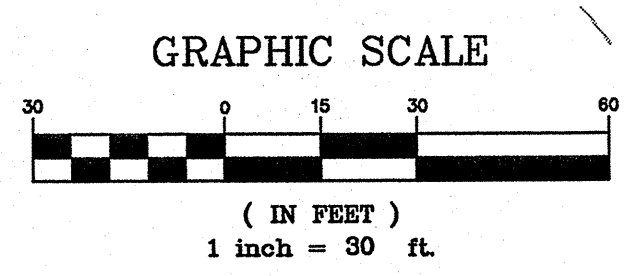
G:\1708.09\CONCEPT\1708.09-INSET-6B.dwg, C-43 INSET 6B, 6/28/2007 10:30:41 AM, Jordan



**NOTES:**  
 1. INSTALL EROSION CONTROL MIX BARRIER AT TOE OF FILLS.  
 2. UTILIZE THE SAME ROADWAY DETAILS, CULVERT APRON AND EROSION CONTROL DETAILS AS USED FOR PROPOSED NEW ACCESS & SUMMIT ROADS.



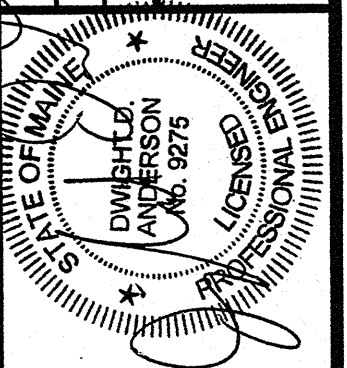
**EXISTING ACCESS ROAD - IMPROVEMENTS AT AREA V4**  
 SCALE: HORIZ 1"=200'  
 VERT 1"=20'



**INSET AREA 6B**  
 LAYOUT, GRADING AND  
 EROSION CONTROL PLAN (V4)

**BLACK NUBBLE WIND FARM PROJECT**  
 MAINE MOUNTAIN POWER LLC

DeLuca-Hoffman Associates, Inc.  
 778 MAIN STREET, SUITE 8  
 SOUTH PORTLAND, ME 04106  
 207.775-1121  
 www.delucahoffman.com



**MORTENSON**  
 M.A. Mortenson Company  
 700 Meadow Lane North  
 Minneapolis, MN 55440

NO.	DATE	REVISIONS
3	06.22.07	REVISED FOR BLACK NUBBLE ONLY PROJECT
2	12.06.06	SUBMISSION FOR CLIENT REVIEW
1	10.31.06	DRAFT SUBMISSION FOR CLIENT REVIEW - PARTIAL SET

SHEET

**C-43**