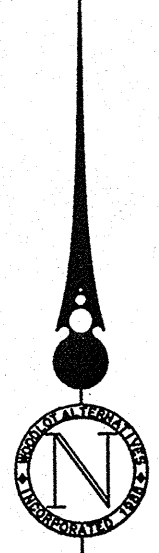
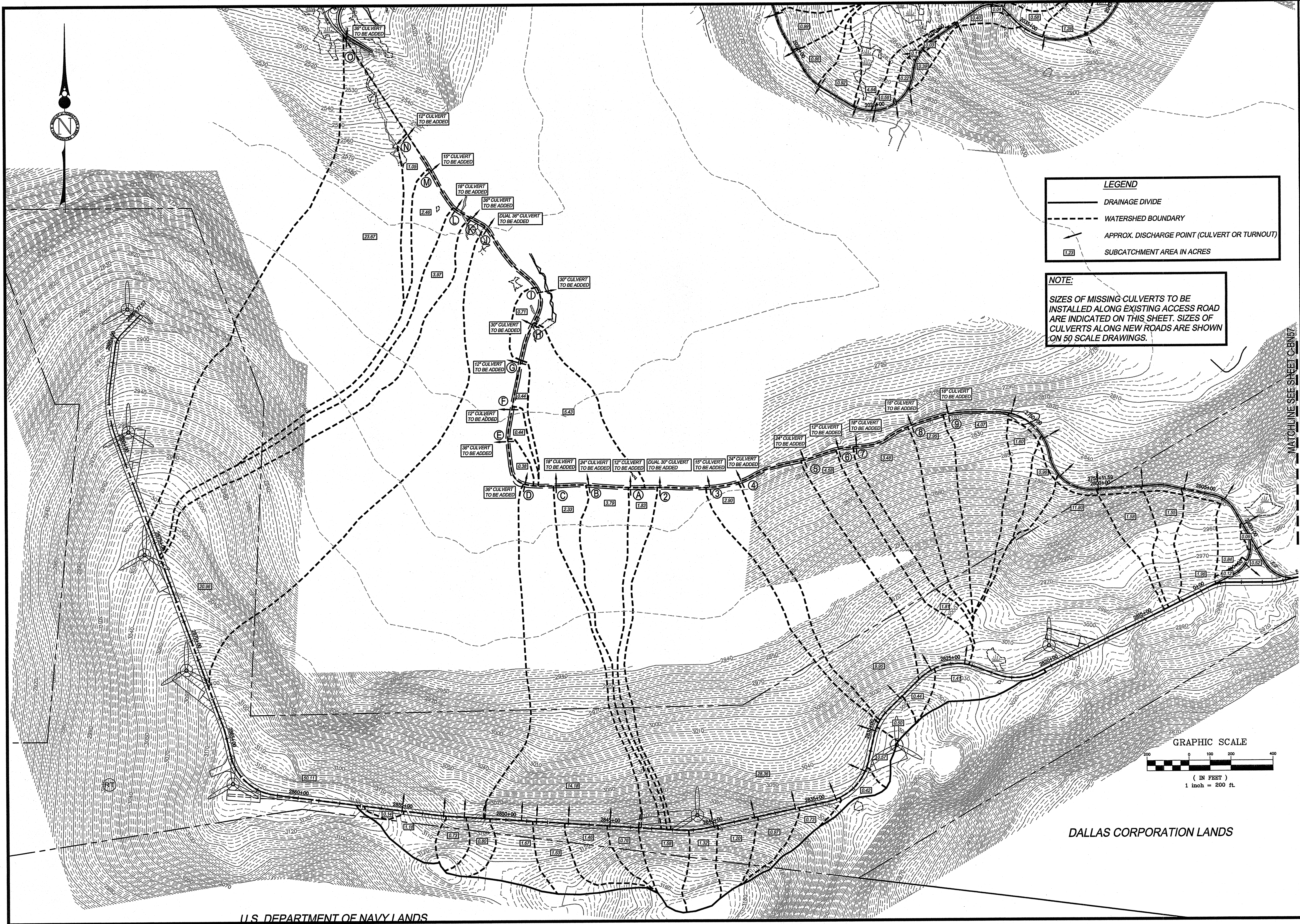


APPENDIX 2.3

Mountain Drainage Analysis Maps (C-BN56 to C-BN58)

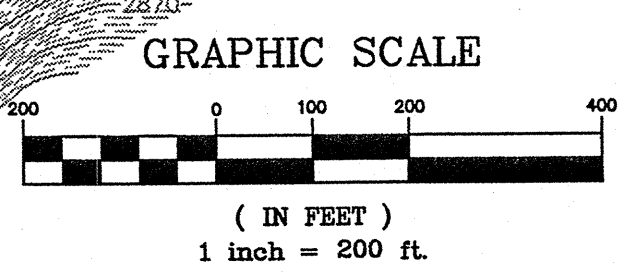
G:\1708.09\CONCEPT\1708.09-DRAINAGE.dwg, C-BN56, 6/26/2007 12:09:26 PM, Jordan



LEGEND

- DRAINAGE DIVIDE
- WATERSHED BOUNDARY
- APPROX. DISCHARGE POINT (CULVERT OR TURNOUT)
- SUBCATCHMENT AREA IN ACRES

NOTE:
 SIZES OF MISSING CULVERTS TO BE INSTALLED ALONG EXISTING ACCESS ROAD ARE INDICATED ON THIS SHEET. SIZES OF CULVERTS ALONG NEW ROADS ARE SHOWN ON 50 SCALE DRAWINGS.



U.S. DEPARTMENT OF NAVY LANDS

DALLAS CORPORATION LANDS

LOWER BLACK NUBBLE DRAINAGE AREAS

BLACK NUBBLE WIND FARM PROJECT
 MAINE MOUNTAIN POWER LLC

NO.	DATE	REVISIONS
4	06.22.07	REVISED FOR BLACK NUBBLE ONLY PROJECT
3	12.06.06	DESIGN SUBMISSION TO CLIENT
2	12.15.05	REVISED PROJECT TITLE
1	08.12.05	ISSUED TO CLIENT FOR REVIEW

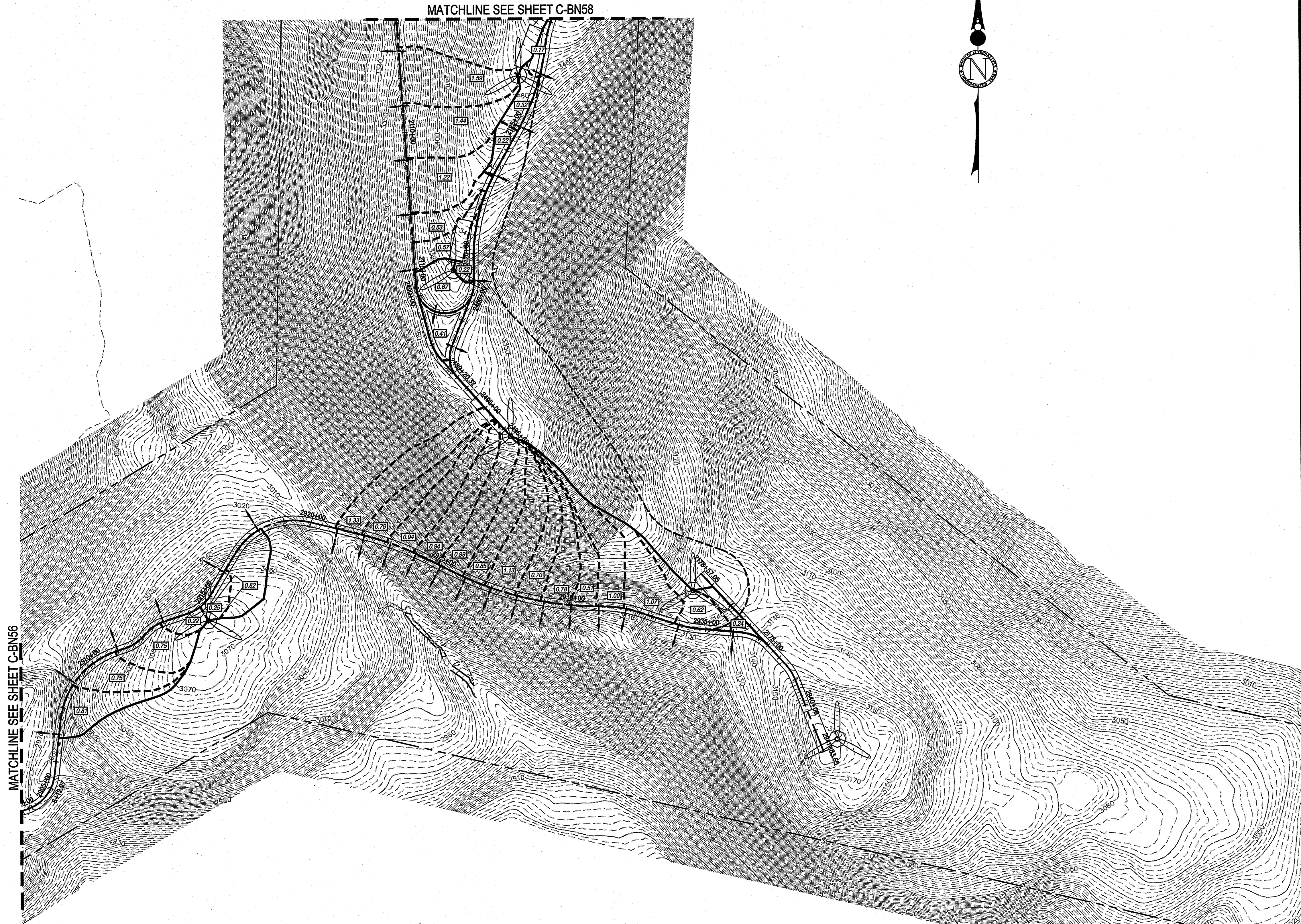
MORTENSON
 M.A. Mortenson Company
 700 Meadow Lane North
 Minneapolis, MN 55440

DeLuca-Hoffman Associates, Inc.
 778 MAIN STREET, SUITE 8
 SOUTH PORTLAND, ME 04106
 207.775.1121
 www.delucahoffman.com

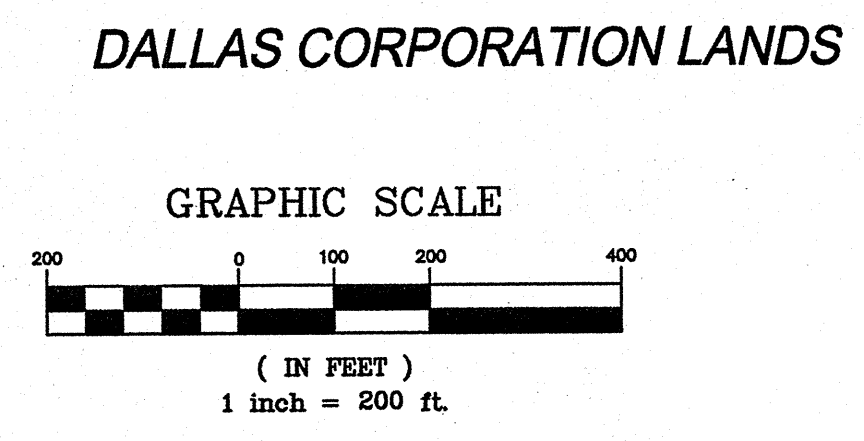
SHEET

C-BN56

G:\1708.09\CONCEPT\1708.09-DRAINAGE.dwg, C-BN57, 6/26/2007 12:10:31 PM, Jordan

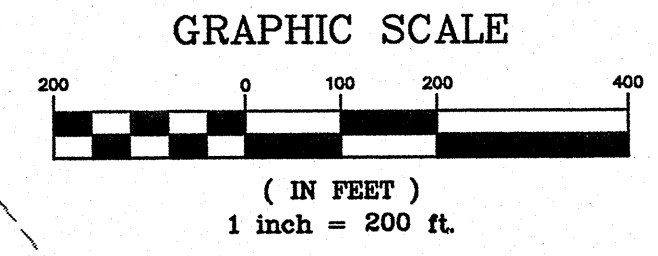
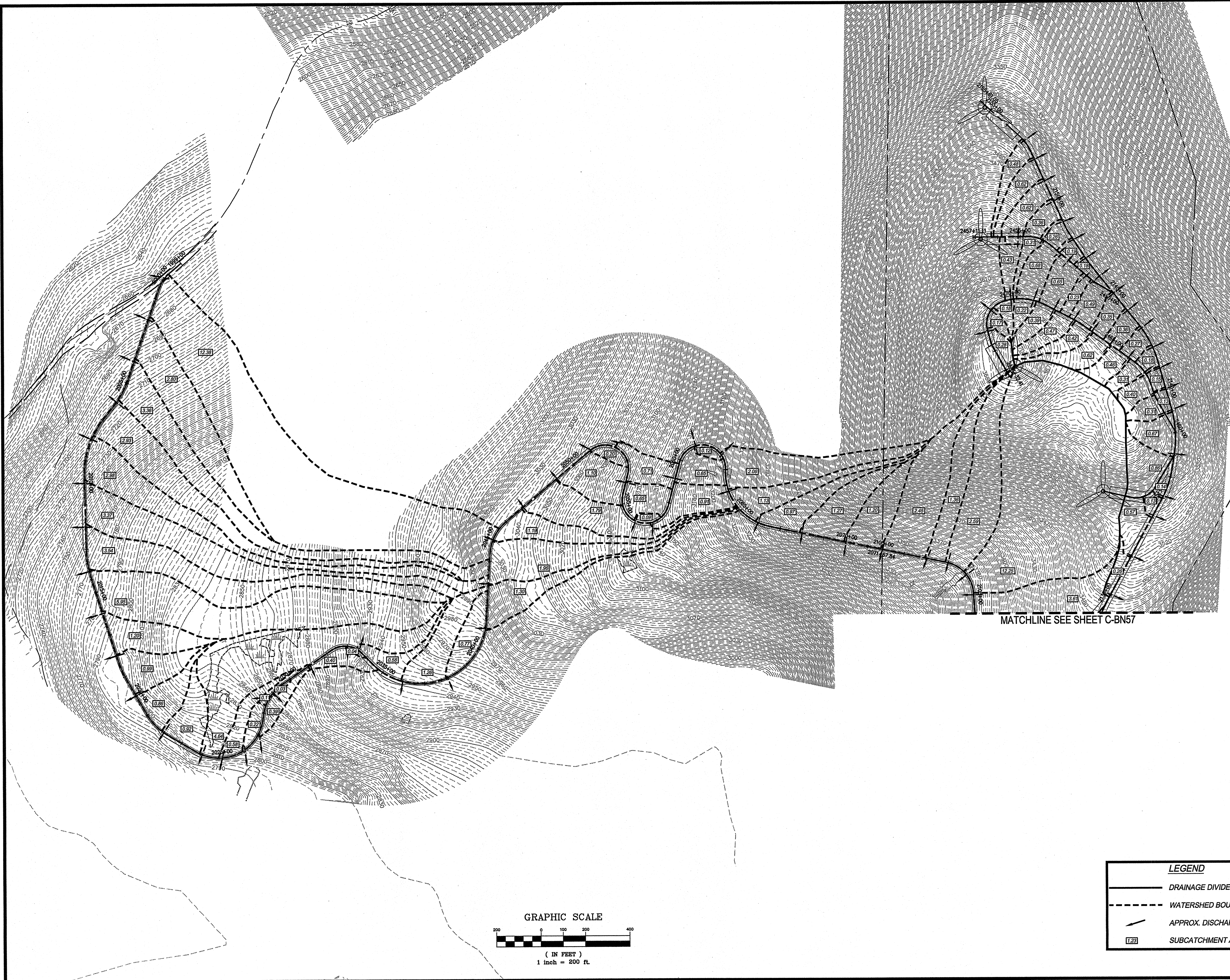


LEGEND	
	DRAINAGE DIVIDE
	WATERSHED BOUNDARY
	APPROX. DISCHARGE POINT (CULVERT OR TURNOUT)
	SUBCATCHMENT AREA IN ACRES



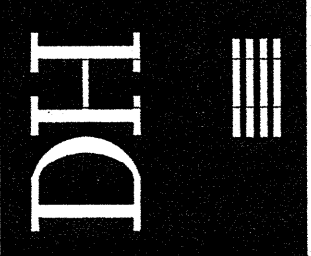
<p>BLACK NUBBLE WIND FARM PROJECT MAINE MOUNTAIN POWER LLC</p>		<p>LOWER BLACK NUBBLE DRAINAGE AREAS</p>	
<p>DRAWN: CAW DESIGNED: DDA FILE NAME: 1708.09-DRAINAGE</p>	<p>SCALE: AS NOTED JOB NO. 1708.09</p>	<p>NO. DATE</p>	<p>REVISED FOR BLACK NUBBLE PROJECT ONLY DESIGN SUBMISSION TO CLIENT REVISED PROJECT TITLE ISSUED TO CLIENT FOR REVIEW REVISIONS</p>
<p>Deluca-Hoffman Associates, Inc. 778 MAIN STREET, SUITE 8 SOUTH PORTLAND, ME 04106 207.775.1121 www.delucahoffman.com</p>		<p>MORTENSON M.A. Mortenson Company 700 Meadow Lane North Minneapolis, MN 55440</p>	
		<p>SHEET</p> <h1 style="font-size: 2em;">C-BN57</h1>	

G:\1708.09\CONCEPT\1708.09-DRAINAGE.dwg, C-BN58, 6/26/2007 12:11:36 PM, jordan

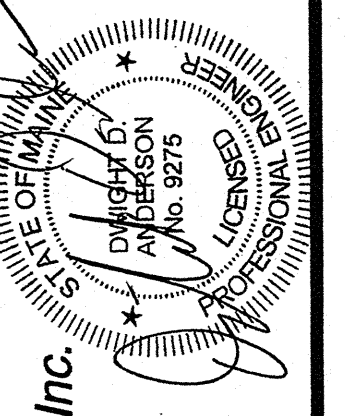


LEGEND	
	DRAINAGE DIVIDE
	WATERSHED BOUNDARY
	APPROX. DISCHARGE POINT (CULVERT OR TURNOUT)
	SUBCATCHMENT AREA IN ACRES

BLACK NUBBLE WIND FARM PROJECT
MAINE MOUNTAIN POWER LLC



DeLuca-Hoffman Associates, Inc.
778 MAIN STREET, SUITE 8
SOUTH PORTLAND, ME 04106
207.775.1121
www.delucahoffman.com



UPPER BLACK NUBBLE
DRAINAGE AREAS

DRAWN:	CMW	SCALE:	AS NOTED
DESIGNED:	DDA	JOB NO.:	1708.09
FILE NAME:	1708.09-DRAINAGE		
MORTENSON			
M.A. Mortenson Company 700 Meadow Lane North Minneapolis, MN 55440			

SHEET
C-BN58

NO.	DATE	REVISIONS
4	06.22.07	REVISED FOR BLACK NUBBLE PROJECT ONLY
3	12.06.06	DESIGN SUBMISSION TO CLIENT
2	12.15.05	REVISED PROJECT TITLE
1	08.12.05	ISSUED TO CLIENT FOR REVIEW