

UTILITY NAME: _____

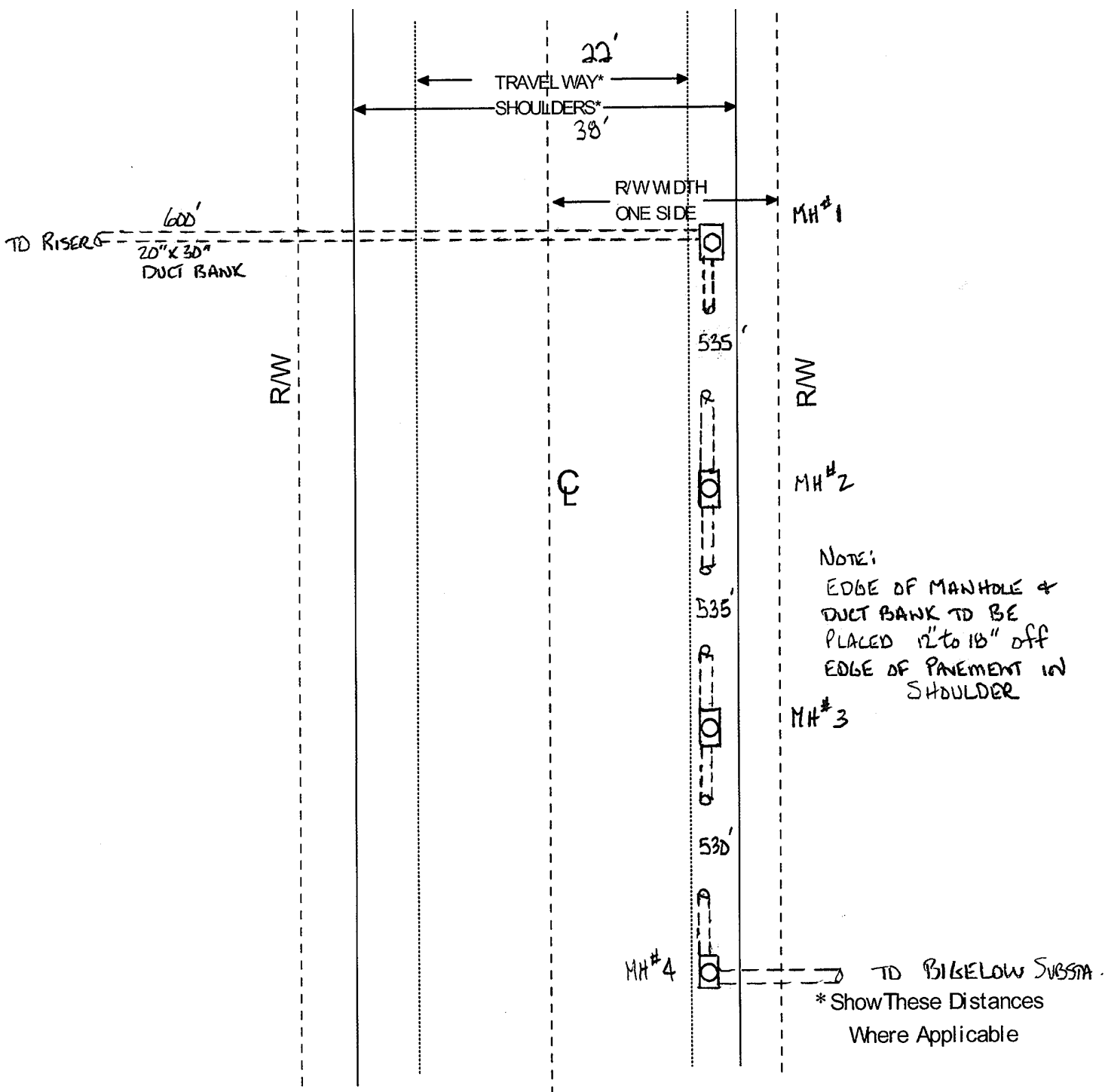
DATE: _____

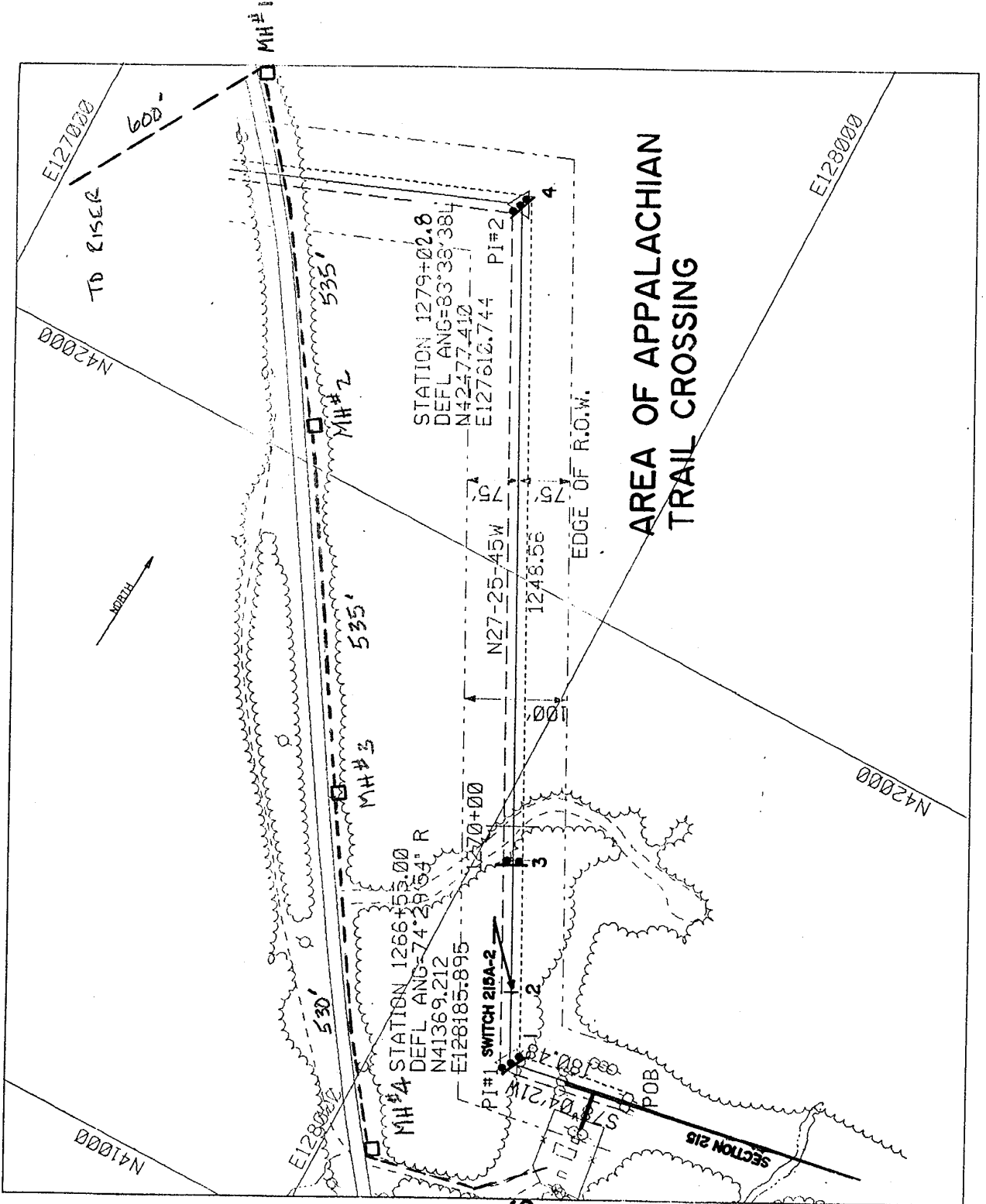
Appendix J

TOWN: _____

MDOT PIN #: _____

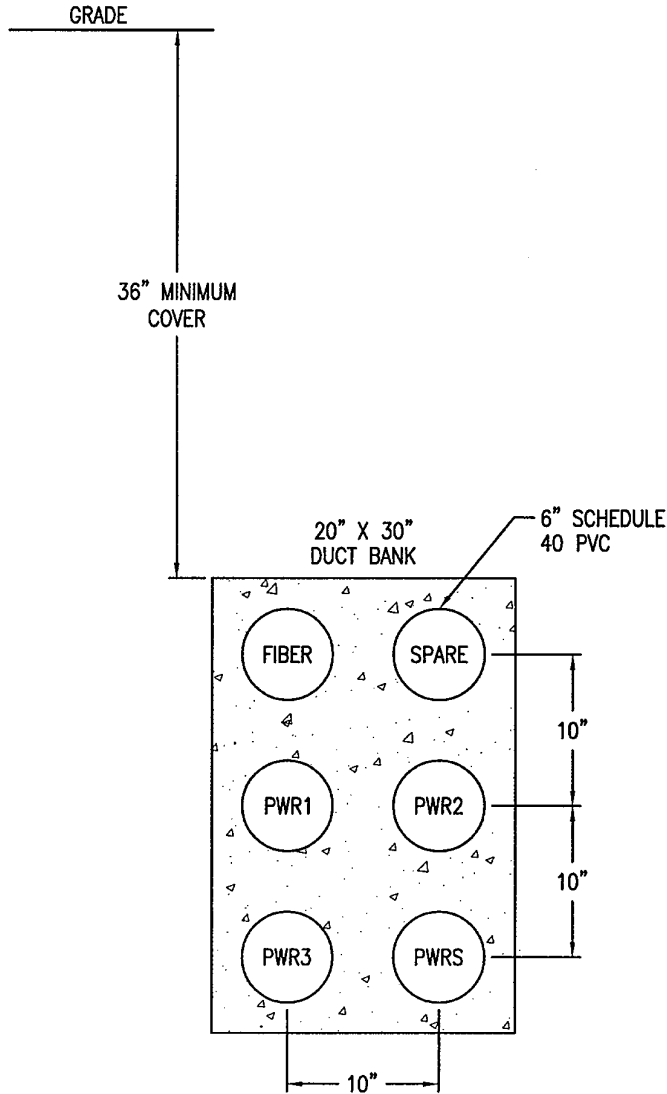
The purpose of this "Sketch Plan" is to show the location of the proposed facility in relation to the highway. This plan is not necessarily drawn to scale, however, all reference points, offset distances and lengths must be accurately indicated. Multiple utility pole installations associated with MDOT projects may indicate the first and last pole in relation to the reference point described on the first sheet (including the project stations) and then reference an attached pole list for all those in between.




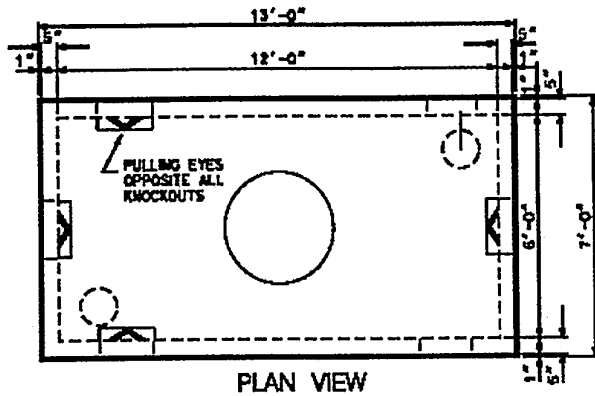


BELOW S/S

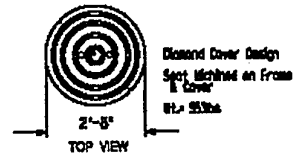
DUCT BANK FOR
CABLE 115KV SOLID DIELECTRIC
CROSS LINKED POLYETHYLENE (XLPE)
500 KCMIL COPPER - 3.0" O.D.



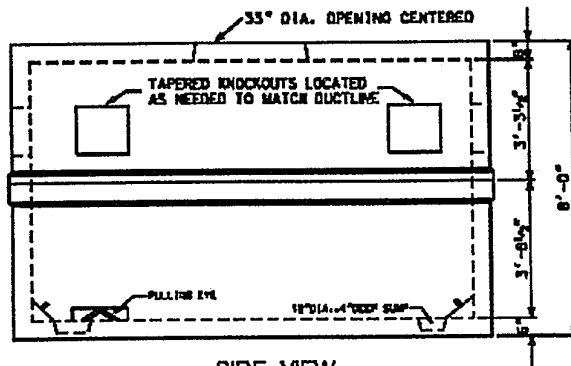
				REDINGTON WIND FARM CONCRETE ENCASED PVC DUCT BANK			
				CARRABASSETT VALLEY / WYMAN PLANTATION MAINE			
A		ISSUED FOR REVIEW	01/30/04	JLB			
NO.		REV.	DATE	BY	DESIGNED DPE DRAWN	CHCK. APPR.	DATE SCALE
					JLB		01/30/04 1"=1'-0"
CLIENT APPROVAL				 Engineering & Environmental Consulting, LLC 249 Western Avenue Augusta, Maine 04330		10166-C1	
APPROVED BY _____ COMPANY _____ DATE _____						CONTRACT DWG NO. 10166-C1	
						REVISION A	



PLAN VIEW



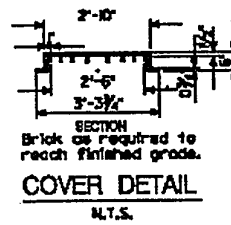
TOP VIEW



SIDE VIEW

MANHOLE DETAIL

N.T.S.
(Ref. Types 38Y)



COVER DETAIL

N.T.S.

THIS DRAWING SHALL BE REVIEWED ON THE CAD SYSTEM ONLY

NOTES

1. CONCRETE: 5000PSI AFTER 28 DAYS
2. REINFORCED FOR H-20 LOADING
3. PULLING EYES, INSERTS, DUCT OPENINGS, CAST IN AS REQUIRED
4. SHIPLAP JOINTS SEALED WITH ASPHALTIC BUTYL RUBBER SEALANT.
5. ORDER MODEL M326 MANHOLE COVER AND FRAME FROM ETHERIDGE FOUNDRY, 1035 OCEAN AVENUE, PORTLAND, ME. COVER TO BE MARKED 'CMP CO.'
6. INSTALL TWO COURSES OF BRICK BENEATH COVER FRAME TO ALLOW FOR FUTURE GRADE CHANGE.

	ORIGINAL	REVISED	REVISED		DISTRIBUTION ENGINEERING	PRECAST CONCRETE 38Y MANHOLE
BY	MSR					
APPROVED	TBB					
DATE	8/16/97				CENTRAL MAINE POWER CO.	905-2525