

NO.	REVISION	DATE	BY	CK	P.E. STAMPED BY	P.E. No.
A	ISSUED FOR CLIENT REVIEW	10/24/03	DRG	DPE		
B	V90 UPDATE	1/ 3/05	DRG	DPE		
		/ /				
		/ /				
		/ /				
		/ /				
		/ /				

CLIENT APPROVAL	DRG DESIGNED
APPROVED BY	DRG DRAWN
COMPANY	DPE CHECKED
DATE	APPROVED
	REVIEWED

POWER ONE LINE DIAGRAM
ELECTRIC HARVEST SUBSTATION
REDINGTON WIND FARM PROJECT

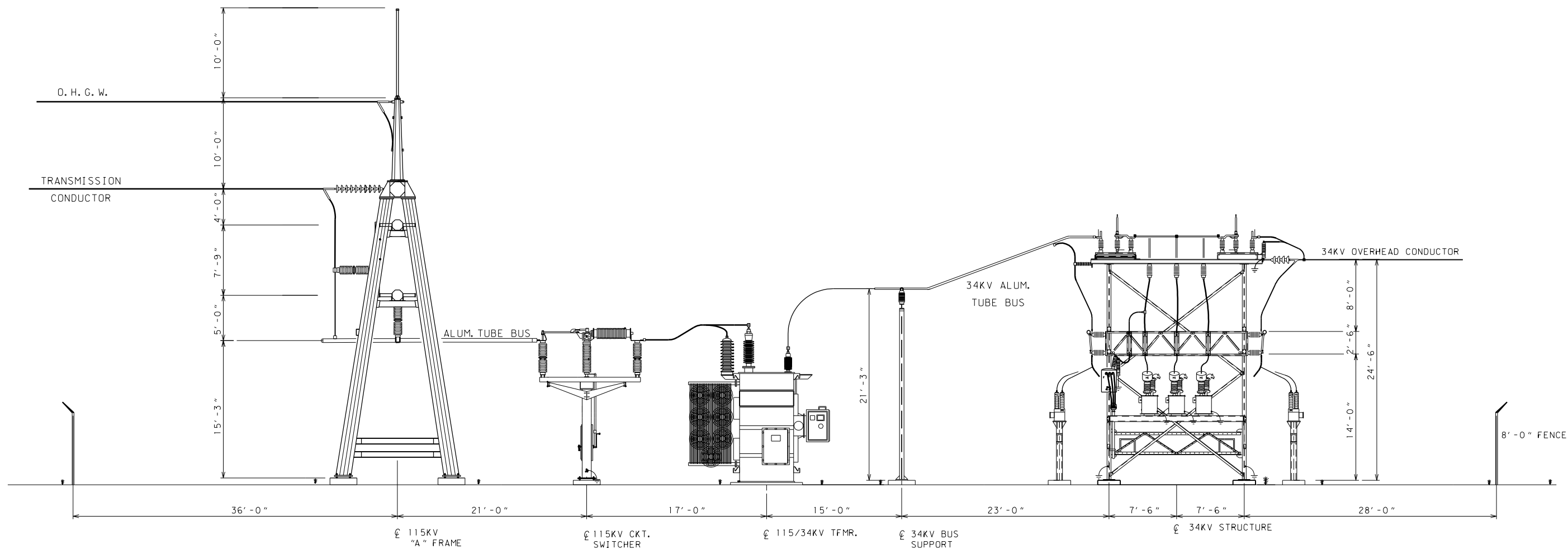
CARRABASSETT VALLEY MAINE

E-PRO Engineering & Environmental Consulting, LLC
 249 Western Avenue
 Augusta, Maine 04330

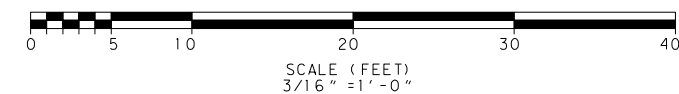
SCALE N.T.S. DATE 10/24/03

10166-E500 REV. B

E-PRO Engineering & Environmental Consulting, LLC
 249 Western Ave, Augusta, Maine 04330
 CONTRACT DWG NO. 10166-E500 PROJECT NO. 10166
 THIS DRAWING SHALL BE REVISED ON THE CADD SYSTEM ONLY



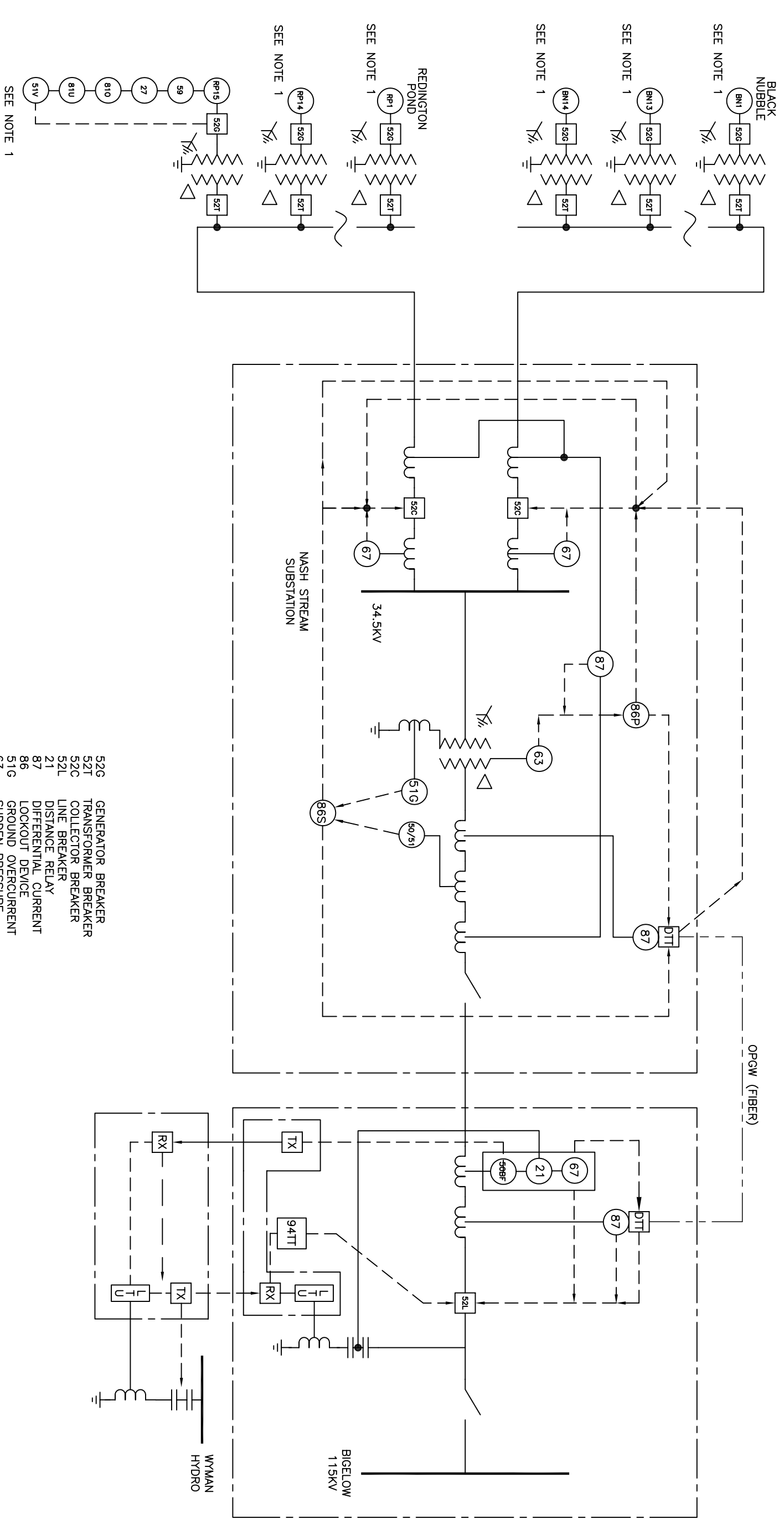
ELEVATION A-A



NO.	REVISION	DATE	BY	CK	P. STAMP	E. No.	P. No.
A	ISSUED FOR CLIENT REVIEW	10/24/03	DRG	DPE			
B	V90 UPDATE	1/ 4/05	DRG	DPE			

DESIGNED	DRG	GENERAL ARRANGEMENT ELEVATION
DRAWN	DRG	ELECTRIC HARVEST SUBSTATION
CHECKED	DPE	REDINGTON WIND FARM PROJECT
APPROVED		CARRABASSETT VALLEY MAINE
REVIEWED		

ENG. CONTRACTOR	REFERENCE DRAWINGS



- 52G GENERATOR BREAKER
- 52T TRANSFORMER BREAKER
- 52C COLLECTOR BREAKER
- 52L LINE BREAKER
- 21 DISTANCE RELAY
- 87 DIFFERENTIAL CURRENT LOCKOUT DEVICE
- 86 GROUND OVERCURRENT
- 51G SUDDEN PRESSURE
- 63 DIRECTIONAL OVERCURRENT
- 67

NOTES:
 1-EACH UNIT PROVIDED WITH STANDARD PROTECTION
 AS INDICATED ON RP15.

NO.	REVISION	DATE	BY	OK	P.E. No.	P.E. No.
0	000	00/00/01	000	000	000	000

CLIENT APPROVAL	REVIEWED	SCALE	DATE
000 APPROVED BY 000 DATE 00/00/01	000 CHECKED 000 APPROVED 000	000	000

REDINGTON WIND FARM PROJECT		E-PRO Engineering & Environmental Consulting, LLC 249 Western Ave, Augusta, Maine 04330 DATE 00/00/01	10166-E1	MAINE
RELAY ONE-LINE DIAGRAM 34.5KV TRANSMISSION				
REDINGTON TOWNSHIP	SCALE 000	DATE 00/00/01	10166-E1	REV. 0