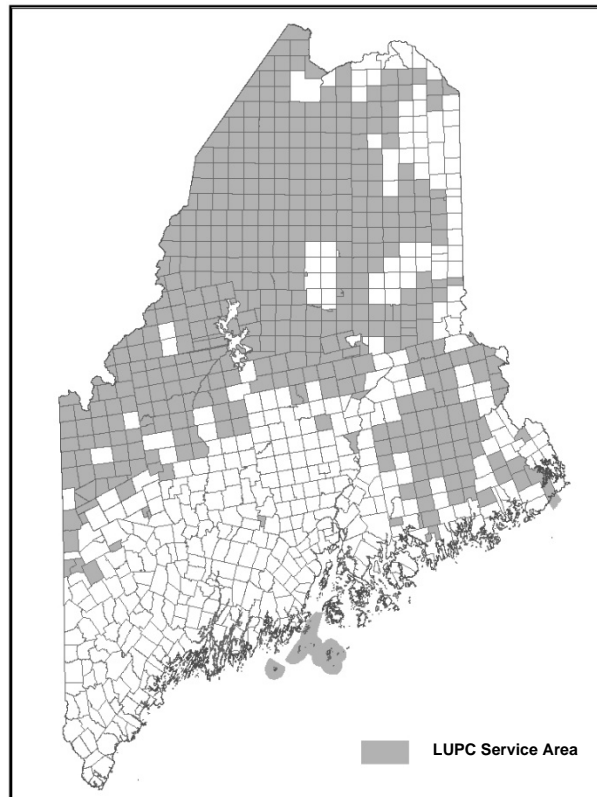


LAND USE DISTRICTS AND STANDARDS

FOR AREAS SERVED BY THE
MAINE LAND USE PLANNING COMMISSION



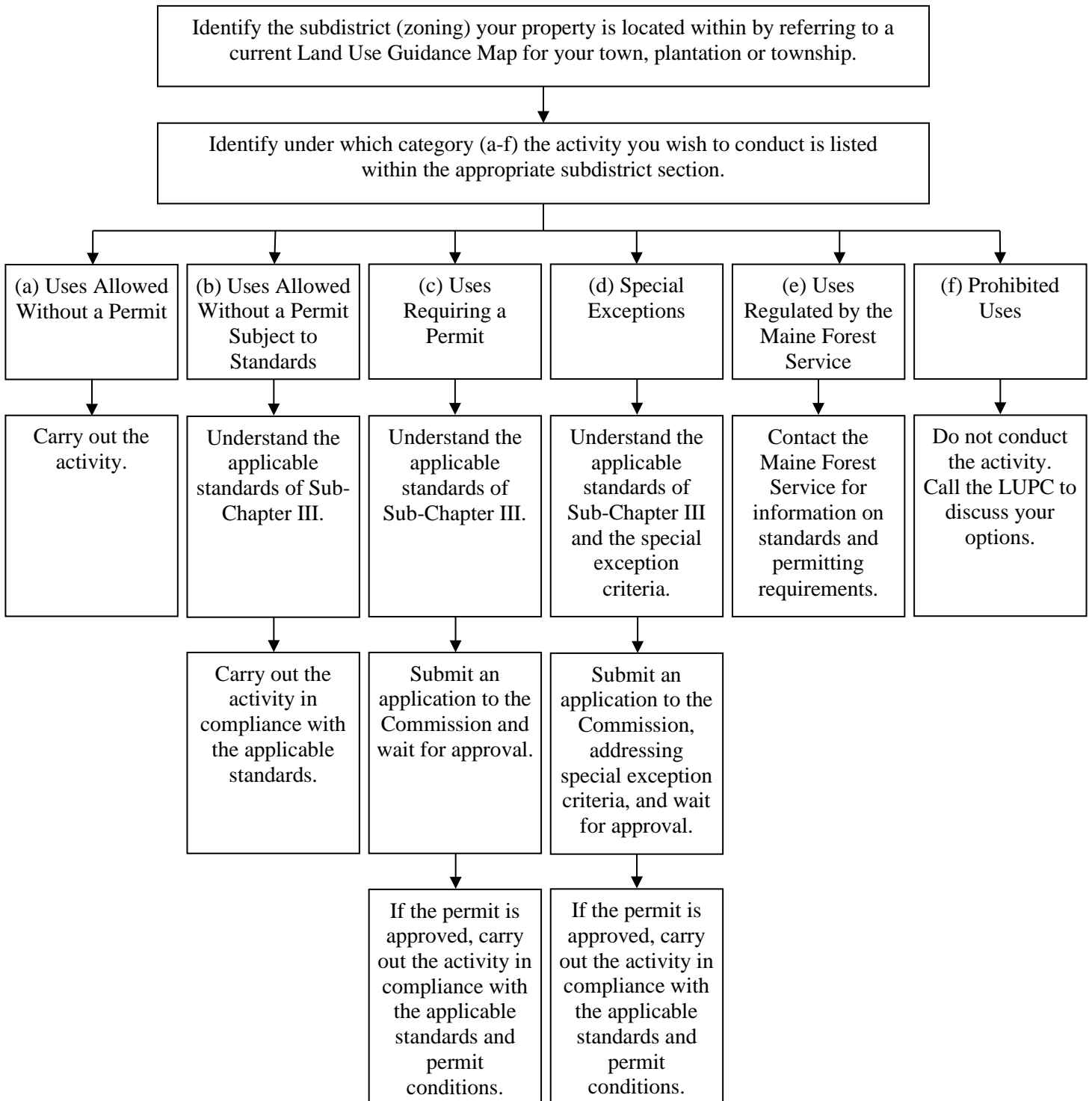
CHAPTER 10 OF THE COMMISSION'S RULES AND STANDARDS

Initially Adopted January 12, 1977
Latest Revisions August 11, 2023

Note: In response to P.L. 2011, ch.599 (enacting LD 1739), in management and protection districts (except for development areas in Resource Plan Protection Subdistricts (P-RP)), the Commission no longer is responsible for regulating timber harvesting, land management roads, water crossings associated with land management roads, and gravel pits less than five acres in size. The regulation of these activities has been transferred to the Maine Forest Service.

A GUIDE TO USING AND UNDERSTANDING THIS DOCUMENT

USING CHAPTER 10



APPENDICES

APPENDIX A SAMPLE DETERMINATIONS TO IDENTIFY WATER QUALITY LIMITING LAKES

Purpose. The purpose of the following is to determine those lakes where a density of one dwelling unit per 150* feet of shoreline of the lake would increase the phosphorus concentration of the lake water by 5 parts per billion or more.

Method. The maximum change in phosphorus loading will be determined by:

$$(1) \Delta L = \Delta P \times DA \times R$$

where Δ = change
 L = phosphorus loading
 ΔP = phosphorus concentration
 ΔP = .005 grams/meters³ (approximately equivalent to 5 parts per billion)
 R = run-off coefficient (average annual run-off)
 DA = drainage area

Assuming 1/4 time occupancy, four people per dwelling, and a contribution of $.4 \times 10^3$ grams of phosphorus per person per year to the body of water, the water quality limitation to shoreline development is:

$$(2) \text{ max. } \frac{\Delta L}{.4 \times 10^3 \text{ grams per year}} = \text{number of dwelling units}$$

If development was allowed to a density of 1 dwelling unit per 150 feet of shoreline, the maximum number of dwellings allowed according to shoreline length only would be:

$$(3) \text{ shoreline length} = \frac{\text{number of dwelling units}}{150 \text{ feet}}$$

If (3) is greater than (2), the lake is a water quality limiting lake;

If (2) is greater than (3), the lake is not a water quality limiting lake;

* Since the minimum shore lot frontage on major water bodies is 150 feet measured as a straight line between the points of intersection of side lot lines with the normal high water mark of the shoreline, and due to the irregularity of shoreline, the actual average shoreline measure along the normal high water mark for such lot is estimated to be 150 feet.

Sample 1

Madawaska Lake, Aroostook County

Characteristics:

Drainage area	= 82.9 x 10 ⁶ m ²
Run-off coefficient	= .5 m/year
Shoreline length	= 54,000 feet
ΔP	= .005 grams

Calculations:

- (1) Maximum $\Delta L = 20.7 \times 10^4$ grams per year.
- (2) Number of dwelling units allowed based on water quality limitations = 518 dwelling units.
- (3) Number of dwelling units allowed based on shoreline length = 360 dwelling units.

Result: Madawaska Lake is not a water quality limiting lake.

Sample 2

Tomah Lake, Washington County

Characteristics:

Drainage Area	= 1.8 x 10 ⁶ m ²
Run-off coefficient	= .6 m/year
Shoreline length	= 7,000 feet
ΔP	= .005 grams

Calculations:

- (1) Maximum $\Delta L = 5.4 \times 10^3$ grams per year.
- (2) Number of dwelling units allowed based on water quality limitations = 14 dwelling units.
- (3) Number of dwelling units allowed based on shoreline length = 47 dwelling units.

Result: Tomah Lake is a water quality limiting lake.

APPENDIX B GUIDELINES FOR VEGETATIVE STABILIZATION

Areas of disturbed soil, including but not limited to areas that are filled, graded or otherwise disturbed during construction projects, should be stabilized according to the following guidelines. These guidelines do not apply to forest management activities and are not strict regulations, and therefore alternative methods of stabilizing soil may be used. However, whenever soil stabilization or stabilization of disturbed areas is required by regulation or by the terms of individual permits, individuals must assure that either these guidelines, or measures equally effective in stabilizing disturbed areas of soil are employed.

The goals to be achieved by proper stabilization are the avoidance of accelerated soil erosion and the avoidance of sedimentation or pollution of water bodies. All stabilization measures must be maintained so that grass or other vegetation remains intact and healthy, otherwise these measures will be ineffective.

In general:

1. Sterile soils such as sands and gravels should be covered with 2 to 4 inches of soil medium that will support vegetative growth.
2. Disturbed soil areas should be graded such that runoff water is either minimized or eliminated from running over the site.
3. Disturbed areas which can be seeded between May 1 and September 15 should be prepared and seeded during that period.
4. Disturbed areas which cannot be seeded between May 1 and September 15 should be mulched with hay, straw or some other suitable material to keep them as stable as possible over the winter, and particularly during spring runoff the following year. For over-wintering, mulch must be tacked down, as it is easily blown around on frozen ground, leaving areas of soil exposed. Mulch hay should be applied at a depth of 4 inches, or between 150 to 200 lbs. per 1,000 square feet, over the disturbed site. Mulched over-wintered areas should be prepared and seeded the following spring as soon as conditions allow.

It is not recommended that disturbed areas be seeded after September 15th (“dormant seeding”) for a number of reasons. Among the reasons, seeding rates are doubled, which is more expensive; timing is critical to ensure that germination does not occur before the following spring; there is an increased risk of sedimentation because sites are generally wetter in the fall; the thicker mulch must be removed in the spring in order to allow the germinating seed to survive; and the application of fertilizer during this time increases the risk of leaching or runoff loss of nutrients into water bodies.

5. Seeding preparation, in addition to providing a soil medium that will support vegetative growth if the site is sterile, includes the application of lime and fertilizer, which should be lightly raked prior to seeding. After the area is seeded, it should be lightly watered and then mulched with 70 to 90 lbs. (2 standard bales) per 1,000 square feet of weed free hay or straw to protect the seed. Keep the site stable and moist, and allow the seed to germinate and grow.
6. For accurate liming as well as fertilization, it is recommended that you have the soil analyzed to determine the specific nutrient requirements of your site.

Lime should be applied at a rate of approximately 140 pounds to 1,000 square feet of area. This rate may vary depending on the natural conditions of the soil on the site. 10-5-20 fertilizer should be applied at a rate of 18.5 lbs. per 1,000 square feet of area. Following the establishment of vegetation, non-phosphorous fertilizer should be used in accordance with the Maine Department of Environmental Protection’s recommendations.

7. In shoreland areas in particular, fertilizers should be of the "quick release" low phosphorus type, such as 12-4-8 mixtures applied at a rate of 8 pounds per 1,000 square feet of area. If you are near water bodies, it is important not to apply more than approximately this amount of fertilizer, as excess may be washed into streams or lakes and contribute to lowering water quality and such things as algae blooms in lakes.

Following the establishment of vegetation, non-phosphorous fertilizer should be used in accordance with the Maine Department of Environmental Protection's recommendations.

Fertilizers should never be applied right before thunder storms or before spring runoff, because the great amounts of water running over the land will wash the fertilizer, particularly phosphorus, into water bodies. However, a light watering after the fertilizer is applied will help bind the phosphorus to the soil.

8. There are many combinations of grasses that can be used. One combination particularly good for providing soil stability, generally referred to as the Soil Conservation Mixture, consists of:
(Proportions, by weight)

Creeping Red Fescue	35%	Kentucky Bluegrass	25%
Annual Rye Grass	15%	Perennial Rye Grass	10%
Red Top	10%	White Dutch Clover	5%
* Oats - See Below			

This seed would be applied at a rate of 1 pound per 1,000 square feet. These particular grasses do best if mowed no closer than 2-1/2 to 3 inches from the ground. Of course, other seed mixtures are available.

It is important, in choosing a mixture, to choose one suitable for the site being stabilized. There are many different types of seeding mixtures designed for particular site conditions such as shade, sun, and drainage. Any mix should contain some seed which germinates rapidly to provide the quickest stabilization possible while awaiting the germination of the remaining types.

- (*) For quick germination, oats are very good. They germinate in 7 to 10 days. They should be planted at a rate of approximately 1 to 1-1/2 bushels per acre, in addition to the basic grass mixture. Oats should be mowed when they reach knee height to allow the germinating grasses to receive sunlight.

Alternatives:

As indicated above, other stabilization programs may be used, provided they are equivalently effective in stabilizing disturbed areas and preventing accelerated soil erosion and sedimentation of water bodies. Further assistance may be obtained, including in some cases site-specific recommendations, as follows:

- Local Soil and Water Conservation Districts
- The USDA Natural Resource Conservation Service
- Maine Department of Environmental Protection, Lakes Program
- Landscaping Professionals
- Reputable Lawn and Garden Supply Dealers

The following documents may provide valuable assistance to those developing a soil stabilization plan:

Maine Erosion and Sediment Control Handbook for Construction: Best Management Practices (Cumberland County Soil & Water Conservation District and Maine Department of Environmental Protection, 1991)

Strategy for Managing Nonpoint Source Pollution From Agricultural Sources and Best Management Guidelines (NPS Agricultural Task Force, 1991)

Erosion and Sediment Control Handbook for Maine Timber Harvesting Operations, Best Management Practices (Maine Forest Service, 1991)

APPENDIX C ALPHABETICAL LIST OF LAKES SHOWING WILDLANDS LAKE ASSESSMENT FINDINGS

LEGEND TO APPENDIX C:

Resource Ratings:

FSH	= Fisheries	O	= Outstanding
WLD	= Wildlife*	S	= Significant
SC	= Scenic	P	= Present
SH	= Shore Character	m	= missing information
BOT	= Botanic	+, -	= resource needing further field checking due to public comment
CLT	= Cultural		
PHY	= Physical		(+ = positive comment; - = negative comment)

An "" after the wildlife rating indicates an outstanding wildlife value due to an especially concentrated and diverse wildlife value -- one of the criteria for a Management Class 2 Lake.

Resource Class:

- 1A** = lakes of statewide significance with two or more outstanding values
- 1B** = lakes of statewide significance with one outstanding value
- 2** = lakes of regional significance (with no outstanding values but at least one significant resource value)
- 3** = lakes of local or unknown significance (either had no significant or outstanding natural value or information was inadequate to make a determination)

Land Use:

- INAC** = Relatively Inaccessible--has no road passable with a 2-wheel drive car within approximately 1/4 mile of the lake shore
-
- AC** = Relatively Accessible
-
- UNDEV** = Relatively Undeveloped--has less than one development unit per shore mile, taken as an average over the entire lake (a development unit is defined as a single residence, small sporting camp cluster, or similar development)
-
- DEV** = Relatively Developed

Management Class:

- 1 = least accessible, undeveloped high value lakes
- 1/6 = meets criteria for Mgmt Class 1, but adequately protected by Mgmt Class 6 zoning (remote ponds)
- 2 = accessible, undeveloped lakes with exceptional values
- 3 = lakes potentially suitable for development
- 4 = high value, developed lakes
- 5 = heavily developed lakes
- 6 = remote ponds

ALPHABETICAL LIST OF LAKES SHOWING
WILDLANDS LAKE ASSESSMENT FINDINGS

PRINCIPAL LAKE NAME	LAKE #	TOWN NAME	IF&W REG	SIZE (AC)	RESOURCE RATINGS							RESOURCE CLASS	LAND USE		MGNT CLASS
					FSH	WLD	SC	SH	BOT	CLT	PHY		ACCESS	DEV	
ABBIE P	3360	BOWMANTOWN TWP	D	12	S							2	AC	DEV	
ABOL DEADWATER	2058	T02 R10 WELS	F	150	O					S		1B	AC	UNDEV	
ACKLEY P	2200	MOUNT CHASE	F	19			S					2	AC	UNDEV	
ALDER L	1778	T11 R04 WELS	G	160								3	AC	UNDEV	
ALDER P	0120	T03 R05 BKP WKR	D	108								3	INAC	UNDEV	
ALDER P	2504	ALDER BROOK TWP	E	37	S		S			S		2	AC	UNDEV	
ALLAGASH L	9787	T08 R14 WELS	E	4260	O	O	O	O		S	O	1A	AC	UNDEV	2
ALLAGASH P	2970	T09 R15 WELS	G	89	S					S		2	AC	UNDEV	
ALLEN P	4516	T35 MD	C	83	m	S	S-					2	INAC	DEV	
ALLEN P (LOWER)	4504	T34 MD	C	51	m							3	INAC	UNDEV	
ALLEN P (MIDDLE)	4502	T34 MD	C	32	m							3	AC	UNDEV	
ALLEN P (UPPER)	4500	T34 MD	C	44	m							3	AC	UNDEV	
ALLIGATOR L	4498	T34 MD	C	1159	O		O	S				1A	AC	UNDEV	2
ALLIGATOR P	0502	TA R11 WELS	E	47	S							2	INAC	UNDEV	6
AMBEJEJUS L*	PAMB	T01 R09 WELS	F	3289	S		S	S		O	S	1A	AC	DEV	3,5
ANDERSON P	4426	T10 SD	C	16	m							3	INAC	UNDEV	
ARNOLD P	3332	COBURN GORE	D	148	S		O			O		1A	AC	DEV	4
ATKINS P	4176	T08 R09 WELS	G	32								3	INAC	UNDEV	
ATTEAN P	2682	ATTEAN TWP	E	2745	O		O	O	O		O	1A	AC	UNDEV	2
ATWOOD P	4250	T05 R08 WELS	F	50	S		S					2	INAC	UNDEV	
AUSTIN P	0278	BALD MTN TWP T2R3	D	684	S							2	AC	UNDEV	
AUSTIN P	2410	T05 R17 WELS	E	43								3	INAC	UNDEV	
AUSTIN P (LITTLE)	0244	BALD MTN TWP T2R3	D	110	S							2	AC	UNDEV	
AVERY P	3001	T07 R15 WELS	E	60								3	AC	UNDEV	
AZISCOHOS L*	3290	LINCOLN PLT	D	6700	O	O	S	S		O	S	1A	AC	DEV	
AZISCOHOS L (NORTH)*	AZ02	PARKERTOWN TWP	D	4700	O	O	S	S		O	S	1A	AC	DEV	
AZISCOHOS L (SOUTH)*	AZ01	LINCOLN PLT	D	2000	O	O	S	S		O	S	1A	AC	DEV	3
AZISCOHOS P	3106	MAGALLOWAY TWP	D	12	S							1B	INAC	UNDEV	6
B LAKE	1718	HAMMOND	G	66	m							3	INAC	UNDEV	
B POND	0478	TB R11 WELS	F	644	O		S			S		1B	AC	UNDEV	
BAIT P	0978	T04 INDIAN PURCHASE TWP	F	20								3	AC	UNDEV	
BAKER FLOWAGE	0272	MAYFIELD TWP	D	40		S				S		2	INAC	UNDEV	
BAKER L	2400	T07 R17 WELS	E	1231	S					S	S	2	AC	UNDEV	
BAKER P	0422	BOWDOIN COL GR WEST	E	10	m							3	INAC	UNDEV	6
BAKER P	4060	MOXIE GORE	D	93								3	AC	UNDEV	
BAKER P	4122	TOMHEGAN TWP	E	74								3	AC	UNDEV	
BAKER P	5110	HAYNESTOWN TWP	E	270	O		S					1B	AC	UNDEV	
BAKER STREAM P	7104	BALD MTN TWP T2R3	D	12	S							2	AC	DEV	5
BALD MOUNTAIN P	0314	BALD MTN TWP T2R3	D	1152	O	O	O	O				1A	AC	UNDEV	2
BARBLESS P	4384	T07 SD	C	10								3	AC	UNDEV	
BARKER P	3118	BOWMANTOWN TWP	D	35	S							2	AC	UNDEV	
BARREN P	1220	T24 MD BPP	C	11								3	AC	UNDEV	
BARRETT P	2658	HOLEB TWP	E	34	S							2	AC	UNDEV	
BARTLETT P	1986	T10 R09 WELS	G	77	S	S						2	AC	UNDEV	
BARTLEY P (BIG)	2656	HOLEB TWP	E	10								3	INAC	UNDEV	

* This lake has multiple management classes corresponding to sections of the lake. Refer to the official zoning map for designations.

ALPHABETICAL LIST OF LAKES SHOWING
WILDLANDS LAKE ASSESSMENT FINDINGS

PRINCIPAL LAKE NAME	LAKE #	TOWN NAME	IF&W REG	SIZE (AC)	RESOURCE RATINGS							RESOURCE CLASS	LAND USE		MGNT CLASS
					FSH	WLD	SC	SH	BOT	CLT	PHY		ACCESS	DEV	
BARTLEY P (LITTLE)	2664	HOLEB TWP	E	10								3	INAC	UNDEV	
BASIN P	0042	PIERCE POND TWP	D	80	S	S						2	INAC	UNDEV	
BASKAHEGAN L	1078	BROOKTON TWP	F	6944	S	O				S	S	1B	AC	UNDEV	
BAY P (WEST)	4396	T07 SD	C	249		O						1B	INAC	UNDEV	1
BEAN P	0656	T02 R12 WELS	E	16	m							3	INAC	UNDEV	6
BEAN P	1880	T11 R17 WELS	G	44							P	3	AC	UNDEV	
BEAN P (LOWER)	0646	RAINBOW TWP	E	37	S	S						2	INAC	UNDEV	6
BEAN P (MIDDLE)	0648	RAINBOW TWP	E	10		S						2	INAC	UNDEV	6
BEAN P (UPPER)	0650	RAINBOW TWP	E	25	S	S					S	2	INAC	UNDEV	6
BEAN POT P	4026	T05 R15 WELS	E	52								3	AC	UNDEV	
BEANS (BEAN) P	0204	PLEASANT RIDGE PLT	D	20	S							2	INAC	UNDEV	
BEAR BROOK BOG	4020	T06 R15 WELS	E	15	m	S						2	INAC	UNDEV	
BEAR P	0528	TA R11 WELS	E	12								3	AC	UNDEV	
BEAR P	0636	RAINBOW TWP	E	30	S						S	2	INAC	UNDEV	6
BEAR P	0882	ELLIOTTSVILLE TWP	E	17	m							3	INAC	UNDEV	
BEAR P	2136	CEDAR LAKE TWP	F	10								3	INAC	UNDEV	
BEAR P	2934	T02 R13 WELS	E	81	S							2	INAC	UNDEV	
BEAR P	4018	T06 R15 WELS	E	138		S	O					1B	INAC	UNDEV	6
BEAR P	4480	T28 MD	C	19	m							3	AC	UNDEV	
BEATTIE P	5066	BEATTIE TWP	E	27	S							2	INAC	DEV	6
BEAU L	9785	T19 R11 WELS	G	2003	S				S	S	S	1B	AC	UNDEV	3
BEAVER MOUNTAIN L	3562	SANDY RIVER PLT	D	543	S		S					2	AC	DEV	5
BEAVER P	0484	SHAWTOWN TWP	E	27	S							2	INAC	UNDEV	6
BEAVER P	0670	T03 R11 WELS	E	15	m		S	S				2	INAC	UNDEV	6
BEAVER P	1662	T14 R05 WELS	G	10								3	AC	UNDEV	
BEAVER P	1872	T12 R17 WELS	G	70							P	3	AC	UNDEV	
BEAVER P	2636	FORSYTH TWP	E	10								3	AC	UNDEV	
BEAVER P	3076	T08 R05 WELS	G	67								3	AC	UNDEV	
BEAVER P	3310	MAGALLOWAY TWP	D	179	O		O-					1A	AC	UNDEV	2
BEAVER P	3354	SEVEN PONDS TWP	D	20	S							2	AC	DEV	5
BEAVER P	3588	TOWNSHIP D	D	20	S							2	AC	UNDEV	
BEAVER P	7309	T42 MD BPP	C	20	m							3	INAC	UNDEV	
BEAVER P	8739	RANGELEY PLT	D	14								3	AC	UNDEV	
BEAVER P	9756	ALDER BROOK TWP	E	12								3	AC	UNDEV	
BEAVER P (BIG)	0610	RAINBOW TWP	E	45	S							2	INAC	UNDEV	6
BEAVER P (BIG)	4162	T07 R09 WELS	F	329	S	+	S	+			+	2	INAC	UNDEV	
BEAVER P (LITTLE)	0612	T03 R11 WELS	E	10	m							3	INAC	UNDEV	6
BEAVER P (LITTLE)	3312	MAGALLOWAY TWP	D	50	S							2	AC	DEV	
BEAVER P (LITTLE)	4164	T07 R09 WELS	G	122	S							2	AC	UNDEV	
BEAVER P (LITTLE)	9700	RAINBOW TWP	E	8								3	INAC	UNDEV	6
BEAVER TAIL P	1536	T14 R09 WELS	G	128	S	S+						2	AC	UNDEV	
BEAVERDAM L (NORTH)	1312	T26 ED BPP	C	147	S							3	AC	UNDEV	
BEAVERDAM L (SOUTH)	1232	T26 ED BPP	C	160	m							3	INAC	UNDEV	
BECK P	5142	T03 R05 BKP WKR	D	32	S						O	1B	AC	UNDEV	
BEN L	1638	WALLAGRASS	G	37	S							2	AC	UNDEV	
BENJAMIN P	2684	ATTEAN TWP	E	121	m		S+	S+				2	INAC	UNDEV	6

ALPHABETICAL LIST OF LAKES SHOWING
WILDLANDS LAKE ASSESSMENT FINDINGS

PRINCIPAL LAKE NAME	LAKE #	TOWN NAME	IF&W REG	SIZE (AC)	RESOURCE RATINGS							RESOURCE CLASS	LAND USE		MGNT CLASS
					FSH	WLD	SC	SH	BOT	CLT	PHY		ACCESS	DEV	
BENSON P (BIG)	0864	T07 R09 NWP	E	320	O		O+			S		1B	AC	UNDEV	2
BERRY P	2550	JOHNSON MOUNTAIN TWP	E	35						S		2	INAC	UNDEV	
BERRY P	2930	T02 R13 WELS	E	71	S							2	AC	UNDEV	
BERRY P (LITTLE)	2554	JOHNSON MOUNTAIN TWP	E	12								3	AC	UNDEV	
BERRY P (LITTLE)	2932	T02 R13 WELS	E	15								3	INAC	UNDEV	
BIG BOG	2412	T05 R17 WELS	E	1064								3	AC	UNDEV	
BIG BROOK L	1480	T14 R10 WELS	G	60								2	INAC	UNDEV	
BIG L	1288	BIG LAKE TWP	C	10305	O	O	+		O	O		1A	AC	DEV	3
BIGELOW P	3318	MAGALLOWAY TWP	D	10								3	AC	UNDEV	
BILL MORRIS P	0128	T03 R05 BKP WKR	D	23	S							2	INAC	UNDEV	
BILLINGS P	1970	T11 R09 WELS	G	64								3	AC	UNDEV	
BILLINGS P #1	3108	PARMACHENEE TWP	D	20						S-		2	INAC	UNDEV	
BILLINGS P #2	3110	PARMACHENEE TWP	D	10						S-		2	INAC	UNDEV	
BIRCH RIDGE P #1	0514	TA R11 WELS	E	11	S							2	INAC	UNDEV	6
BISHOP P	1572	T13 R07 WELS	G	13								3	AC	UNDEV	
BLACK BROOK DWTR	9706	T02 R12 WELS	E	30								3	INAC	UNDEV	
BLACK BROOK L (BIG)	1860	CASWELL	G	62								3	INAC	UNDEV	
BLACK BROOK L (LIT)	1862	CASWELL	G	13								3	INAC	UNDEV	
BLACK BROOK P	0040	PIERCE POND TWP	D	47		S						2	INAC	UNDEV	
BLACK BROOK P	4062	MOXIE GORE	D	333	S	S						2	AC	UNDEV	
BLACK BROOK P #1	1184	T19 MD BPP	C	13								3	AC	UNDEV	
BLACK BROOK P #6	1192	T25 MD BPP	C	19								3	AC	UNDEV	
BLACK CAT P	3086	T08 R06 WELS	G	27	m							3	INAC	UNDEV	
BLACK L	1506	T15 R09 WELS	G	147	O		S					1B	INAC	UNDEV	1/6
BLACK L	1568	T16 R09 WELS	G	10								3	INAC	UNDEV	
BLACK P	0454	T01 R12 WELS	E	127								3	AC	UNDEV	
BLACK P	1622	ST JOHN PLT	G	21	S							2	AC	UNDEV	
BLACK P	2896	T06 R14 WELS	E	1450	m					S		2	AC	UNDEV	
BLACK P (LITTLE NO)	1508	T15 R09 WELS	G	6	S		S					2	INAC	UNDEV	6
BLACK P (LITTLE S0)	1510	T15 R09 WELS	G	7	S		S					2	INAC	UNDEV	6
BLACK P (LOWER)	7724	OXBOW TWP	D	30	O							1B	AC	DEV	
BLACK P (UPPER)	3362	BOWMANTOWN TWP	D	30	S							2	AC	UNDEV	
BLACK SPRUCE P	2844	T08 R10 WELS	G	12								3	AC	UNDEV	
BLAKE L	1648	T16 R06 WELS	G	128	S							2	AC	UNDEV	
BLAKESLEE L	5114	HAYNESTOWN TWP	E	55	O		S					1B	AC	UNDEV	
BLANCHARD P	5056	ALDER STREAM TWP	D	9						O		1B	INAC	UNDEV	
BLANCHARD P #1	2366	LANG TWP	D	4						O		1B	AC	UNDEV	
BLOOD (DUCK) P	2928	T02 R13 WELS	E	48	S							2	AC	UNDEV	
BLOOD L	1458	T14 R16 WELS	G	18								3	INAC	UNDEV	
BLUE P	1468	T13 R13 WELS	G	11								3	AC	UNDEV	
BLUFF P	0434	FRENCHTOWN TWP	E	10	S						S	2	INAC	UNDEV	6
BLUFFER P	2794	T08 R11 WELS	G	40	S	+	+			+		2	INAC	UNDEV	
BLUFFER P (LITTLE)	2796	T08 R11 WELS	G	12	S	+						2	INAC	UNDEV	
BLUFFER P (UPPER)	2798	T08 R11 WELS	G	15	S	+						2	INAC	UNDEV	6
BOARDWAY P (BIG)	0494	TA R11 WELS	E	15	S						S	2	INAC	UNDEV	6
BOARDWAY P (LITTLE)	0496	TA R11 WELS	E	10							S	2	INAC	UNDEV	

ALPHABETICAL LIST OF LAKES SHOWING
WILDLANDS LAKE ASSESSMENT FINDINGS

PRINCIPAL LAKE NAME	LAKE #	TOWN NAME	IF&W REG	SIZE (AC)	RESOURCE RATINGS							RESOURCE CLASS	LAND USE		MGNT CLASS
					FSH	WLD	SC	SH	BOT	CLT	PHY		ACCESS	DEV	
BOBS P	2426	T04 R17 WELS	E	27								3	AC	UNDEV	
BOG L	1376	MARION TWP	C	25		S					O	1B	INAC	UNDEV	
BOG L	1664	T14 R05 WELS	G	28		S						2	AC	UNDEV	
BOG P	0530	TA R11 WELS	E	40								3	INAC	UNDEV	
BOG P	0944	CEDAR LAKE TWP	F	44								3	AC	UNDEV	
BOG P	2680	ATTEAN TWP	E	95				+	+		S	2	INAC	UNDEV	
BOG P	2864	T07 R12 WELS	E	35								3	INAC	UNDEV	
BOGUS MEADOW P	4380	T07 SD	C	26	S	O	S					1B	INAC	UNDEV	1
BOODY P	3000	T08 R08 WELS	G	28								3	AC	UNDEV	
BOOT P	0816	T07 R09 NWP	E	17								3	INAC	UNDEV	
BOTTLE L	4702	LAKEVILLE	F	281	S		S					2	AC	DEV	5
BOTTLE P	2070	T02 R09 WELS	F	90			S					2	INAC	UNDEV	
BOULDER P	2672	T05 R07 BKP WKR	E	30	m							3	INAC	UNDEV	6
BOUNDARY P	5070	BEATTIE TWP	E	70	S					S		2	AC	UNDEV	
BOUNDARY P (SOUTH)	3346	MASSACHUSETTS GORE	D	10	S							2	INAC	UNDEV	
BOWLES L	1154	DAY BLOCK TWP	C	64		S						2	AC	UNDEV	
BOWLIN P	2188	T05 R08 WELS	F	115	S		S					2	AC	UNDEV	3
BOWLIN P (LITTLE)	2194	T05 R07 WELS	F	34	S							2	INAC	UNDEV	6
BOYD L	2158	ORNEVILLE TWP	F	1005	S					S	O	1B	AC	DEV	5
BRACEY P	4508	T34 MD	C	14	S							2	AC	UNDEV	
BRACKETT P	0290	BLANCHARD TWP	E	10	m							3	INAC	UNDEV	6
BRADFORD P	3651	MORO PLT	G	12	m							3	INAC	UNDEV	
BRALEY L	1696	T03 R04 WELS	F	147								3	AC	UNDEV	
BRANCH L (EAST)	2130	CEDAR LAKE TWP	F	1100							S	2	AC	UNDEV	
BRANCH L (SOUTH)	2144	SEBOEIS PLT	F	2035	S	S				S		2	AC	DEV	
BRANCH P (1ST WEST)	0440	SHAWTOWN TWP	E	119	O		+					1B	AC	DEV	
BRANCH P (2ND&3RD W)	0442	SHAWTOWN TWP	E	214	O		S+					1B	AC	UNDEV	
BRANCH P (EAST)	2822	T07 R11 WELS	E	45	S							2	INAC	UNDEV	
BRANCH P (MIDDLE)	0912	EBEEMEE TWP	F	34	O							1B	INAC	UNDEV	1/6
BRANDY P	1704	WEBBERTOWN TWP	G	28								3	AC	UNDEV	
BRANDY P	2898	CHESUNCOOK TWP	E	650		S						2	INAC	UNDEV	
BRANDY P	9651	T39 MD	F	723	S	O					S	1B	AC	DEV	3
BRASSUA L	4120	ROCKWOOD STRIP T01 R01	E	8979	S					O		1B	AC	DEV	3
BRAYLEY P	2706	T07 R10 WELS	F	6								3	INAC	UNDEV	6
BROKEN BRIDGE P	3264	ALBANY TWP	A	20	S							2	AC	UNDEV	
BROWN P	0788	BOWDOIN COL GR WEST	E	18	S							2	AC	UNDEV	
BROWN P	4178	T08 R09 WELS	G	104	S							2	INAC	UNDEV	
BRULEAU P	1456	T14 R15 WELS	G	35								3	INAC	UNDEV	
BUCK P	0644	RAINBOW TWP	E	6								3	INAC	UNDEV	6
BUCKLEY P	2840	T08 R10 WELS	G	18	S	+	+					2	INAC	UNDEV	
BURNHAM P	0392	BIG MOOSE TWP	E	426	S	S						2	AC	UNDEV	
BURNT P	1996	T09 R07 WELS	G	10								3	INAC	UNDEV	
BURNTLAND L	4792	T35 MD	C	80	S	S						2	AC	UNDEV	
BURNTLAND P	1878	T12 R17 WELS	G	70							P	3	INAC	UNDEV	
BURNTLAND P	2624	DENNISTOWN PLT	E	10								3	AC	UNDEV	
BUTLER P	0056	LEXINGTON TWP	D	28						S		2	INAC	UNDEV	

ALPHABETICAL LIST OF LAKES SHOWING
WILDLANDS LAKE ASSESSMENT FINDINGS

PRINCIPAL LAKE NAME	LAKE #	TOWN NAME	IF&W REG	SIZE (AC)	RESOURCE RATINGS							RESOURCE CLASS	LAND USE		MGNT CLASS
					FSH	WLD	SC	SH	BOT	CLT	PHY		ACCESS	DEV	
BUTLER P	0166	FLAGSTAFF TWP	D	18								3	AC	UNDEV	
BUTLER P	5132	KING & BARTLETT TWP	D	45	S							2	AC	UNDEV	
BUTTERFIELD L	1848	CASWELL	G	13	S					O		1B	AC	UNDEV	
C POND	3278	C SURPLUS	D	173	S	S	O	S			+	1B	INAC	DEV	
CALL P	0140	LOWER ENCHANTED TWP	D	16								3	AC	UNDEV	
CAMERON BOG	9511	HAMMOND	G	18								3	INAC	UNDEV	
CAMP P	0822	T07 R09 NWP	E	11								3	AC	UNDEV	
CAMPBELL L	4794	T35 MD	C	35	m					S-		2	AC	DEV	
CAMPBELL P	2574	BLAKE GORE	E	15								3	AC	DEV	5
CANADA FALLS L	2516	PITTSTON ACAD GRANT	E	2627	S	S				S	O	1B	AC	UNDEV	
CAPE HORN P	2568	PRENTISS TWP T04 R04 NBKP	E	22								3	INAC	UNDEV	6
CAREY L	3014	T08 R06 WELS	G	93								3	INAC	UNDEV	
CARIBOU L	1692	T03 R04 WELS	F	256						S		2	INAC	UNDEV	
CARIBOU L*	CHCA	T02 R12 WELS	E	4600	O	O			O	O	O	1A	AC	DEV	3
CARIBOU P	0176	MT ABRAM TWP	D	10	S							2	AC	UNDEV	
CARIBOU P	1976	T11 R09 WELS	G	12		S						2	AC	UNDEV	
CARIBOU P (BIG)	4142	T07 R10 WELS	F	64	S		S	S	O			1B	INAC	UNDEV	1
CARIBOU P (LITTLE)	4144	T07 R10 WELS	G	10				+				3	INAC	UNDEV	
CARLISLE P	1766	T08 R03 WELS	G	21	m							3	INAC	UNDEV	
CARLOE P	9656	T26 ED BPP	C	20	m							3	INAC	UNDEV	
CARPENTER P	0275	T07 R11 WELS	E	160	S							2	AC	UNDEV	
CARR P	1598	T13 R08 WELS	G	307	S	S						2	AC	UNDEV	
CARRY P	0678	T03 R11 WELS	E	17	S					S		2	AC	UNDEV	
CARRY P	1684	MADAWASKA LAKE TWP	G	64	S					S		2	INAC	UNDEV	
CARRY P	3016	T08 R07 WELS	G	15								3	INAC	UNDEV	
CARRY P (EAST)	0044	CARRYING PLC TWN TWP	D	267	O					S		1B	AC	DEV	
CARRY P (MIDDLE)	0046	CARRYING PLC TWN TWP	D	126	S					S		2	AC	DEV	
CARRY P (WEST)	0048	CARRYING PLC TWN TWP	D	675	O					O		1A	AC	DEV	4
CASSIDY DEADWATER	2944	T04 R15 WELS	E	236		S					P	2	AC	UNDEV	
CATHANCE L	9661	CATHANCE TWP	C	2905	O	O				S	O	1A	AC	DEV	4
CATHANCE L (LITTLE)	1382	CATHANCE TWP	C	140	S							2	AC	UNDEV	
CAUCOMGOMOC L	4012	T06 R14 WELS	E	5081	O	O*	S	S		S	O	1A	AC	UNDEV	2
CEDAR L	2004	CEDAR LAKE TWP	F	685	S							2	AC	DEV	5
CEDAR P	0474	TB R10 WELS	F	65	O						S	1B	INAC	UNDEV	1/6
CEDAR P	2654	HOLEB TWP	E	5								3	INAC	UNDEV	6
CEDAR P	2846	T08 R10 WELS	G	15								3	AC	UNDEV	
CENTER P	1582	T10 R08 WELS	G	128	S							2	INAC	UNDEV	
CENTER P	4040	SOLDIERTOWN T02 R03 NBKP	E	51	S	+				S		2	INAC	DEV	
CHAIN L (FIRST)	1236	T26 ED BPP	C	336	O					S	O	1A	AC	DEV	4
CHAIN L (LOWER)	4732	SAKOM TWP	C	179	S	S						2	INAC	UNDEV	
CHAIN L (MIDDLE)	4734	OQITON TWP	F	221	S		S					2	AC	UNDEV	
CHAIN L (SECOND)	1234	T26 ED BPP	C	589	O					S	O	1A	AC	DEV	4
CHAIN L (THIRD)	1314	T26 ED BPP	C	157	S							2	INAC	DEV	
CHAIN L (UPPER)	4736	OQITON TWP	F	717	S							2	AC	UNDEV	
CHAIN OF PONDS	5064	CHAIN OF PONDS TWP	D	700	O	O	O	S		S	O	1A	AC	UNDEV	2

* This lake has multiple management classes corresponding to sections of the lake. Refer to the official zoning map for designations.

ALPHABETICAL LIST OF LAKES SHOWING
WILDLANDS LAKE ASSESSMENT FINDINGS

PRINCIPAL LAKE NAME	LAKE #	TOWN NAME	IF&W REG	SIZE (AC)	RESOURCE RATINGS							RESOURCE CLASS	LAND USE		MGNT CLASS
					FSH	WLD	SC	SH	BOT	CLT	PHY		ACCESS	DEV	
CHAIRBACK P (EAST)	0802	T07 R09 NWP	E	46	S						S	2	INAC	UNDEV	6
CHAIRBACK P (WEST)	0796	T07 R09 NWP	E	47	O						S	1B	INAC	UNDEV	1/6
CHALK P	3270	ALBANY TWP	A	25	m							3	AC	DEV	
CHALK P	4478	T22 MD	C	32								3	AC	UNDEV	
CHAMBERLAIN L	2882	T07 R12 WELS	E	11084	O	O				O		1A	AC	UNDEV	
CHAMBERLAIN P	3026	T07 R06 WELS	G	20								3	INAC	UNDEV	
CHANDLER DEADWATER	9179	T09 R08 WELS	G	14	S							2	AC	UNDEV	
CHANDLER L	1994	T09 R08 WELS	G	401	S		O	S				1B	AC	UNDEV	
CHANDLER P	2834	T08 R10 WELS	G	115	S		S			+		2	AC	UNDEV	
CHARLES (CHARLIE) P	1454	T14 R15 WELS	G	60								3	AC	UNDEV	
CHASE L	2752	T09 R10 WELS	G	403	S		S	+		O		1B	AC	UNDEV	
CHASE P	3632	MORO PLT	G	10								3	AC	UNDEV	
CHASE P	5050	JIM POND TWP	D	14		S						2	AC	DEV	
CHASE P (FIRST)	1538	T14 R09 WELS	G	12	S	S						2	INAC	UNDEV	
CHASE P (SECOND)	1540	T14 R09 WELS	G	182	S		S				S	2	INAC	UNDEV	
CHASE P (THIRD)	1542	T14 R09 WELS	G	102	S							2	AC	UNDEV	
CHASE STREAM P	4080	CHASE STREAM TWP	D	75			S					2	AC	DEV	
CHASE STREAM P	4093	MISERY TWP	E	31	S							2	INAC	UNDEV	6
CHASE STREAM P (LIT)	5798	MISERY TWP	E	17	S							2	AC	UNDEV	
CHENEY P	2494	HAMMOND TWP	E	99	S						S	2	AC	UNDEV	3
CHESUNCOOK L*	0662	T03 R12 WELS	E	23070	O	O*	+		O	O	O	1A	AC	UNDEV	
CHESUNCOOK L*	CHCH	T03 R12 WELS		18470	O	O*	+		O	O	O	1A	AC	UNDEV	2
CHESUNCOOK P	0672	T03 R11 WELS	E	272	S		O	O			O	1A	INAC	UNDEV	6
CHUB P	5100	HOBBSSTOWN TWP	E	24	S							2	AC	DEV	
CHURCH P	0538	TA R10 WELS	F	53	S		+					2	AC	UNDEV	
CHURCHILL L	2856	T09 R12 WELS	G	2923	O	O*				S	S	1A	AC	UNDEV	2
CHURCHILL L (LITTLE)	9806	T10 R13 WELS	G	25							O	1B	AC	UNDEV	
CLARKSON P	2854	T09 R13 WELS	G	38								3	INAC	UNDEV	
CLAYTON L	1882	CLAYTON LAKE TWP	G	166	S						P	2	AC	UNDEV	
CLAYTON L	1958	T12 R08 WELS	G	264	S							2	AC	UNDEV	3
CLAYTON P	2406	T06 R17 WELS	E	75	m							3	INAC	UNDEV	3
CLEAR L	1938	T10 R11 WELS	G	614	O		O	S				1A	AC	UNDEV	2
CLEAR P	5074	LOWELLTOWN TWP	E	21	m+							3	INAC	UNDEV	6
CLEARWATER P	2476	PRENTISS TWP T04 R04 NBKP	E	11							P	3	INAC	UNDEV	6
CLEARWATER P	2692	ATTEAN TWP	E	34			+	+		O-		1B	INAC	UNDEV	1/6
CLIFF L	2780	T09 R12 WELS	G	563	O		O	S			+	1A	AC	UNDEV	2
CLIFFORD L	1304	GREENLAW CHOPPING TWP	C	954	O	O*	+					1A	AC	UNDEV	2
CLIFFORD P	0624	RAINBOW TWP	E	17	S							2	INAC	UNDEV	6
CLISH P	5158	T05 R20 WELS	E	21	S							2	INAC	UNDEV	6
CLOUD P	0906	ELLIOTTSTVILLE TWP	E	20								3	INAC	UNDEV	
COFFEELOS P	2712	T06 R11 WELS	E	198	O	+						1B	AC	UNDEV	
COFFEELOS P (LITTLE)	2716	T06 R11 WELS	E	11								3	AC	UNDEV	
COLD BROOK L	3050	T03 R04 WELS	F	47								3	AC	UNDEV	
COLD STREAM P	2538	MISERY TWP	E	205	O		S+					1B	AC	UNDEV	
COLE P	4676	WEBSTER PLT	F	20								3	AC	UNDEV	

* This lake has multiple management classes corresponding to sections of the lake. Refer to the official zoning map for designations.

ALPHABETICAL LIST OF LAKES SHOWING
WILDLANDS LAKE ASSESSMENT FINDINGS

PRINCIPAL LAKE NAME	LAKE #	TOWN NAME	IF&W REG	SIZE (AC)	RESOURCE RATINGS							RESOURCE CLASS	LAND USE		MGNT CLASS
					FSH	WLD	SC	SH	BOT	CLT	PHY		ACCESS	DEV	
COMPASS P	2072	T02 R09 WELS	F	100							P	3	AC	UNDEV	
CONIC L	7511	BARING PLT	C	32	m							3	INAC	UNDEV	
COOPER P	0540	TA R10 WELS	F	271	S			+				2	INAC	UNDEV	
CORNER P	2998	T09 R16 WELS	G	60							P	3	INAC	UNDEV	
COW P	2376	LANG TWP	D	62	S							2	AC	UNDEV	
COW P	2938	T01 R13 WELS	E	61								3	AC	UNDEV	
CRANBERRY L (LOWER)	1174	T30 MD BPP	C	285	S			O-				1B	AC	DEV	
CRANBERRY L (UPPER)	1176	T30 MD BPP	C	134	S			O-				1B	AC	UNDEV	
CRANBERRY P	2916	LOBSTER TWP	E	46								3	AC	UNDEV	
CRANBERRY P	3066	SCOPAN TWP	G	45								3	AC	UNDEV	
CRANBERRY P	3068	T09 R05 WELS	G	96								3	AC	UNDEV	
CRANBERRY P	3314	MAGALLOWAY TWP	D	100								3	AC	UNDEV	
CRANBERRY P	7509	BARING PLT	C	25								3	AC	UNDEV	
CRANBERRY P	8603	WYMAN TWP	D	12								3	INAC	UNDEV	
CRANBERRY P #1	3018	T08 R06 WELS	G	47								3	INAC	UNDEV	
CRANBERRY P #2	3020	T08 R06 WELS	G	25								3	INAC	UNDEV	
CRANBERRY P(L,NOTCH)	0784	BOWDOIN COL GR WEST	E	7								3	INAC	UNDEV	6
CRANE MILL BROOK RESERVOIR	2899	EDMUNDS TWP	C	24								3	AC	UNDEV	
CRATER P	0468	TB R11 WELS	F	15								3	INAC	UNDEV	
CRATER P	0487	T15 R09 WELS	G	12	S			O	S		+	1B	AC	UNDEV	
CRAWFORD L	1302	BIG LAKE TWP	C	1677	O	S					S	1B	AC	UNDEV	
CRAWFORD P	0520	TA R11 WELS	E	390	O			+	+			1B	AC	UNDEV	
CRESCENT P	0652	RAINBOW TWP	E	11								3	AC	UNDEV	
CRESCENT P	2964	T09 R15 WELS	G	320	O			S	S		P	1B	AC	UNDEV	
CROCKER P	0361	ALBANY TWP	A	10	S							2	AC	UNDEV	
CROCKER P	2626	DENNISTOWN PLT	E	227	S						S	2	AC	UNDEV	
CROCKETT P	0286	BLANCHARD TWP	E	12	S							2	AC	UNDEV	
CROOKED BROOK L	7393	FOREST TWP	F	58								3	AC	UNDEV	
CROSBY P	3330	COBURN GORE	D	150	O	S	O					1A	AC	UNDEV	2
CROSS L	1494	T18 R10 WELS	G	44								3	INAC	UNDEV	
CROSS L	1674	CROSS LAKE TWP	G	2515	S			+	O	S		1B	AC	DEV	5
CRYSTAL P	4778	T40 MD	F	19	S							2	AC	UNDEV	
CUNLIFFE L	1890	T12 R13 WELS	G	134	S							2	AC	UNDEV	
CUNLIFFE P	1450	T13 R16 WELS	G	45								3	AC	UNDEV	
CUNNINGHAM P	2518	PITTSTON ACAD GRANT	E	13								3	AC	UNDEV	
CUPSUPTIC L*	MLCU	ADAMSTOWN TWP	D	2199	O	O	O	S		S-		1A	AC	DEV	4
CUPSUPTIC P	7726	OXBOW TWP	D	20	S							2	AC	UNDEV	
CURRIER P (FIFTH)	2770	T09 R11 WELS	G	12								3	AC	UNDEV	
CURRIER P (FIRST)	2768	T09 R11 WELS	G	20	O			S				1B	INAC	UNDEV	1/6
CURRIER P (SECOND)	2774	T09 R11 WELS	G	28	O							1B	INAC	UNDEV	1/6
CURRIER P (SIXTH)	2754	T09 R10 WELS	G	10								3	AC	UNDEV	
CUT L	3022	T07 R06 WELS	G	294								3	AC	UNDEV	
CUT P	1706	DUDLEY TWP	G	26								3	INAC	DEV	
CUXABEXIS L	2892	T05 R12 WELS	E	592	S	S						2	AC	UNDEV	
DAGGETT P	4006	T07 R14 WELS	E	461	S							2	AC	UNDEV	

* This lake has multiple management classes corresponding to sections of the lake. Refer to the official zoning map for designations.

ALPHABETICAL LIST OF LAKES SHOWING
WILDLANDS LAKE ASSESSMENT FINDINGS

PRINCIPAL LAKE NAME	LAKE #	TOWN NAME	IF&W REG	SIZE (AC)	RESOURCE RATINGS							RESOURCE CLASS	LAND USE		MGNT CLASS
					FSH	WLD	SC	SH	BOT	CLT	PHY		ACCESS	DEV	
DAISEY P	0594	T02 R10 WELS	F	11	S							2	INAC	UNDEV	6
DAVIDSON P	3060	HERSEYTOWN TWP	F	87		S						2	AC	UNDEV	
DAVIS (WAPITI) P	2196	T05 R07 WELS	F	69	S		O					1B	AC	DEV	5
DAVIS P	5112	HAYNESTOWN TWP	E	15								3	INAC	UNDEV	
DEAD P	1180	T25 MD BPP	C	12								3	AC	UNDEV	
DEAD STREAM P	4066	WEST FORKS PLT	D	67								3	AC	DEV	5
DEADWATER (LOWER)	0946	CEDAR LAKE TWP	F	15								3	AC	UNDEV	
DEADWATER P (LOWER)	1978	T11 R09 WELS	G	13								3	INAC	UNDEV	
DEADWATER P (UPPER)	0794	BOWDOIN COL GR WEST	E	10								3	INAC	UNDEV	
DEADWATER P (UPPER)	1980	T11 R10 WELS	G	38								3	AC	UNDEV	
DEADWATER P (UPPER)	2736	T10 R11 WELS	G	35	S							2	AC	UNDEV	
DEASEY PONDS	2304	T03 R07 WELS	F	23						S		2	AC	UNDEV	
DEBOULLIE L	1512	T15 R09 WELS	G	262	O	O	O	S			+	1A	INAC	UNDEV	1
DEBSCONEAG DEADWATER	2076	T02 R10 WELS	F	500	O	O					S	1A	AC	UNDEV	2
DEBSCONEAG L (1ST)	2060	T02 R10 WELS	F	320	O		O	S	O		S+	1A	INAC	UNDEV	1
DEBSCONEAG L (2ND)	0586	T02 R10 WELS	F	189	S							2	INAC	UNDEV	
DEBSCONEAG L (3RD)	0584	T01 R10 WELS	F	1011	O		O	S		S	S	1A	INAC	UNDEV	1
DEBSCONEAG L (4TH)	0582	T01 R11 WELS	E	227	O		S+	S			S	1B	AC	DEV	
DEBSCONEAG L (5TH)	0602	RAINBOW TWP	E	83	S		S	S				2	INAC	UNDEV	
DEBSCONEAG L (8TH)	0608	RAINBOW TWP	E	10								3	INAC	UNDEV	
DEBSCONEAG P (6TH)	0580	T01 R11 WELS	E	31	S					S	S	2	INAC	UNDEV	6
DEER L	4512	T34 MD	C	38	S							2	AC	DEV	5
DEER L	9587	CASWELL	G	10								3	INAC	UNDEV	
DEER P	1624	ST JOHN PLT	G	14	m							3	AC	UNDEV	
DEER P	2922	T03 R13 WELS	E	181	S	S						2	AC	UNDEV	
DEER P	3366	BOWMANTOWN TWP	D	15								3	AC	UNDEV	
DEER P	5128	KING & BARTLETT TWP	D	30	S							2	AC	UNDEV	
DEMO P	4114	ROCKWOOD STRIP T02 R01	E	192	S	S						2	AC	UNDEV	
DENNY P	1524	T15 R09 WELS	G	25	O			+				1B	AC	UNDEV	
DEPOT L	1448	T13 R16 WELS	G	883						S		2	AC	UNDEV	
DESOLATION P	2996	T08 R16 WELS	G	70	S	S	+				P	2	AC	UNDEV	
DICKEY P	1676	CROSS LAKE TWP	G	13	S							2	INAC	UNDEV	
DILL P	2378	DALLAS PLT	D	11		S						2	INAC	UNDEV	
DINGLEY P	2458	T04 R05 NBKP	E	71	S							2	INAC	UNDEV	
DINGLEY P (LITTLE)	2462	T04 R05 NBKP	E	17	S							2	INAC	UNDEV	6
DINGLEY P (UPPER)	2464	T04 R05 NBKP	E	20	S							2	INAC	UNDEV	6
DIPPER P	4042	PITTSTON ACAD GRANT	E	13						O	S	1B	INAC	UNDEV	6
DIXON P	9911	PIERCE POND TWP	D	17	O		+					1B	INAC	UNDEV	1/6
DOLBY P	2124	TA R07 WELS	F	1900		O					S	1B	AC	UNDEV	
DOLE P	2454	DOLE BROOK TWP	E	704	S							2	AC	UNDEV	
DONNELL P	4412	T09 SD	C	1120	O		O	O		S		1A	AC	DEV	4
DORITY P	2496	HAMMOND TWP	E	34	S							2	AC	UNDEV	
DOUGHNUT P	0616	RAINBOW TWP	E	12	S							2	INAC	UNDEV	6
DOUGLAS P	5044	KIBBY TWP	D	20								3	INAC	UNDEV	
DOWNING P	4428	T10 SD	C	70		O						1B	AC	UNDEV	
DRAKE L	1336	FOREST TWP	F	236								3	AC	UNDEV	

ALPHABETICAL LIST OF LAKES SHOWING
WILDLANDS LAKE ASSESSMENT FINDINGS

PRINCIPAL LAKE NAME	LAKE #	TOWN NAME	IF&W REG	SIZE (AC)	RESOURCE RATINGS							RESOURCE CLASS	LAND USE		MGNT CLASS	
					FSH	WLD	SC	SH	BOT	CLT	PHY		ACCESS	DEV		
DUBOIS P	2478	PRENTISS TWP T04 R04 NBKP	E	18	m							P	3	INAC	UNDEV	6
DUCK L	4698	LAKEVILLE	F	256	S			S	S				2	AC	DEV	
DUCK L	4746	OQITON TWP	F	1222	O			S	S				1B	AC	UNDEV	
DUCK P	0257	T04 R11 WELS	E	21	S								2	AC	UNDEV	
DUCK P	1698	T02 R04 WELS	F	26									3	AC	UNDEV	
DUCK P	2894	T05 R12 WELS	E	470	m	S							2	AC	UNDEV	
DUCK P (BIG)	2954	E MIDDLESEX CANAL GR	E	79	S								2	AC	UNDEV	
DUCK P (LITTLE)	2956	E MIDDLESEX CANAL GR	E	11									3	INAC	UNDEV	
DUDLEY RIPS P	9572	T04 R09 NWP	F	20									3	INAC	UNDEV	
DUNCAN P	2480	PRENTISS TWP T04 R04 NBKP	E	143	S								2	AC	UNDEV	
DURGIN P	9855	JOHNSON MOUNTAIN TWP	E	15	S								2	AC	UNDEV	
EAGLE L	1634	T16 R06 WELS	G	5581	O					S			1B	AC	DEV	
EAGLE L	4514	T34 MD	C	260	m					S			2	AC	DEV	
EAGLE L (BIG)	2858	EAGLE LAKE TWP	G	8288	O	O*			O	O	P		1A	AC	UNDEV	2
EAGLE P	3090	DREW PLT	F	49									3	INAC	UNDEV	
EAST L	1464	T17 R14 WELS	G	2551									3	AC	UNDEV	
EAST L (LITTLE)	1466	T17 R14 WELS	G	189		S							2	INAC	UNDEV	
EBEEMEE L	0914	EBEEMEE TWP	F	940				S	S		O	S	1B	AC	DEV	5
EBEEMEE L (UPPER)	0966	T04 R09 NWP	F	196							S		2	AC	DEV	3
ECHO L	2766	T09 R11 WELS	G	115	S			S			S		2	AC	UNDEV	
ED JONES P	1886	T12 R15 WELS	G	15									3	INAC	UNDEV	
EDDY P	3546	SANDY RIVER PLT	D	9									3	INAC	UNDEV	6
EGG P	0666	T03 R12 WELS	E	10									3	AC	UNDEV	
ELAINE P	0011	LOWELLTOWN TWP	E	12									3	INAC	UNDEV	
ELBOW L*	PELB	T03 INDIAN PURCHASE TWP	F	895	S			O	S		S		1B	AC	DEV	3
ELBOW P (LOWER)	1952	T10 R10 WELS	G	36				S					2	AC	UNDEV	
ELBOW P (MIDDLE)	1950	T10 R10 WELS	G	52	S	S	S						2	AC	UNDEV	
ELBOW P (UPPER)	1948	T10 R11 WELS	G	88	S								2	AC	UNDEV	
ELLIS P	4086	CHASE STREAM TWP	D	85	O								1B	AC	DEV	
ELLIS P (LOWER)	2870	T07 R14 WELS	E	77						S			2	AC	UNDEV	
ELLIS P (UPPER)	2992	T07 R14 WELS	E	160						S			2	INAC	UNDEV	
ELM P	2446	ELM STREAM TWP	E	250		S							2	AC	UNDEV	
ELM P (LITTLE)	2444	ELM STREAM TWP	E	45									3	INAC	UNDEV	
ENCHANTED P	0150	UPPER ENCHANTED TWP	E	330	O	O	O	O			S+		1A	INAC	UNDEV	1
ENCHANTED P (LITTLE)	0148	UPPER ENCHANTED TWP	E	35	O								1B	INAC	UNDEV	1/6
ENCHANTED P (LOWER)	0142	LOWER ENCHANTED TWP	D	20	m								3	AC	UNDEV	
ENDLESS L	0942	CEDAR LAKE TWP	F	1499	S					S	S		2	AC	UNDEV	3
ENOCH L	1328	FOWLER TWP	C	18									3	INAC	DEV	
EVERETT P	5134	KING & BARTLETT TWP	D	20	S								2	AC	UNDEV	
EYELET P	1910	T12 R12 WELS	G	13									3	INAC	UNDEV	
FALLS P	1490	T18 R10 WELS	G	256	S	S							2	AC	UNDEV	3
FARRAR P	1974	T11 R10 WELS	G	51	S								2	AC	UNDEV	
FELKER P	5120	KING & BARTLETT TWP	D	50	S								2	AC	UNDEV	
FEMALE P	0574	T01 R12 WELS	E	102	S			S					2	INAC	UNDEV	
FEMALE P (LITTLE)	0578	T01 R12 WELS	E	15									3	INAC	UNDEV	

* This lake has multiple management classes corresponding to sections of the lake. Refer to the official zoning map for designations.

ALPHABETICAL LIST OF LAKES SHOWING
WILDLANDS LAKE ASSESSMENT FINDINGS

PRINCIPAL LAKE NAME	LAKE #	TOWN NAME	IF&W REG	SIZE (AC)	RESOURCE RATINGS							RESOURCE CLASS	LAND USE		MGNT CLASS
					FSH	WLD	SC	SH	BOT	CLT	PHY		ACCESS	DEV	
FERGUSON P	1592	T14 R08 WELS	G	51	S							2	AC	UNDEV	
FERNALD P	8868	PARLIN POND TWP	E	7								3	INAC	UNDEV	6
FIRST L	1152	T37 MD BPP	C	217	m	S						2	AC	UNDEV	
FISH P	0096	PIERCE POND TWP	D	10								3	INAC	UNDEV	
FISH P	2524	THORNDIKE TWP	E	211	S							2	AC	UNDEV	
FISH P	3324	LINCOLN PLT	D	20		S						2	AC	UNDEV	
FISH P	4054	MOXIE GORE	D	15	S							2	INAC	DEV	5
FISH P	6910	HOBBS TOWN TWP	E	275			S			S		2	AC	UNDEV	
FISH P (BIG)	2660	HOLEB TWP	E	64	S		S					2	AC	UNDEV	
FISH P (LITTLE)	2512	ALDER BROOK TWP	E	35	S					S		2	INAC	UNDEV	
FISH P (LITTLE)	2666	HOLEB TWP	E	18								3	INAC	UNDEV	
FISH RIVER L	0009	T13 R08 WELS	G	2642	S	S	O-	S		S		1A	AC	UNDEV	3
FISHER P #2	2560	T04 R05 NBKP	E	10						O		1B	AC	UNDEV	
FISHER P (BIG)	2940	T02 R12 WELS	E	60								3	INAC	UNDEV	
FISHER P (LITTLE)	2942	T02 R12 WELS	E	35			S					2	INAC	UNDEV	
FLAGSTAFF L	0038	DEAD RIVER TWP	D	20300	O	O*	S	S				1A	AC	UNDEV	2
FLATIRON P	2006	CEDAR LAKE TWP	F	284	S							2	AC	DEV	
FLATIRON P	2372	DAVIS TWP	D	30	S							2	AC	UNDEV	
FLETCHER P # 1	9736	BRASSUA TWP	E	12		S						2	AC	UNDEV	
FLETCHER P # 2	9734	BRASSUA TWP	E	20		S						2	AC	UNDEV	
FLINN P	3036	T01 R05 WELS	F	269								3	INAC	UNDEV	
FOGG P	0426	BOWDOIN COL GR WEST	E	23	S							2	INAC	UNDEV	6
FOGG P	2534	LONG POND TWP	E	54			S	O				1B	AC	UNDEV	
FOLEY P	2488	COMSTOCK TWP	E	124	O							1B	AC	UNDEV	
FOLEY P (LITTLE)	2492	COMSTOCK TWP	E	35	m							3	INAC	UNDEV	6
FOSS P	0388	KINGSBURY PLT	E	110	S							2	AC	DEV	
FOURTH L	1130	T37 MD BPP	C	32	m	S						2	AC	UNDEV	
FOURTH L	2820	T07 R11 WELS	E	64	S		S	S				2	AC	UNDEV	
FOWLER P	0686	T03 R11 WELS	E	19	S		O	S				1B	INAC	UNDEV	1/6
FOX P	1472	T17 R12 WELS	G	23	S							2	AC	UNDEV	
FOX P	4438	T10 SD	C	77	S	O	O	S				1A	AC	UNDEV	
FOX P	7734	LOWER CUPSUPTIC TWP	D	20		S						2	AC	UNDEV	
FROST P	0680	T03 R11 WELS	E	198	S					O		1B	AC	DEV	
FROST P	2455	T04 R05 NBKP	E	170	S							2	AC	UNDEV	
FROST P (LITTLE)	0668	T03 R12 WELS	E	35	S	S						2	INAC	UNDEV	6
FROST P FLOWAGE	2562	T04 R05 NBKP	E	70								3	AC	UNDEV	
FRYPAN P	4074	SQUARETOWN TWP	D	30	m							3	AC	UNDEV	
FURLONG P	3488	ALBANY TWP	A	17	m							3	AC	UNDEV	
GALILEE P	1526	T15 R09 WELS	G	9	S		S					2	INAC	UNDEV	
GAMMON P	0024	FREEMAN TWP	D	97		S						2	INAC	UNDEV	
GARDNER L	1358	MARION TWP	C	3886	O	O				S	O	1A	AC	UNDEV	
GARDNER L	1528	T15 R09 WELS	G	288	O	O	O					1A	INAC	UNDEV	1/6
GARDNER P	2192	T05 R07 WELS	F	30								3	INAC	UNDEV	
GASSABIAS L	4782	T41 MD	F	896	S		S			S		2	AC	UNDEV	
GAUNTLET P	0472	TB R10 WELS	F	11	S		O					1B	INAC	UNDEV	1/6
GERARD P	1868	CASWELL	G	19	m							3	INAC	UNDEV	

**ALPHABETICAL LIST OF LAKES SHOWING
WILDLANDS LAKE ASSESSMENT FINDINGS**

PRINCIPAL LAKE NAME	LAKE #	TOWN NAME	IF&W REG	SIZE (AC)	RESOURCE RATINGS						RESOURCE CLASS	LAND USE		MGNT CLASS	
					FSH	WLD	SC	SH	BOT	CLT		PHY	ACCESS		DEV
GETCHELL L (LOWER)	1122	T43 MD BPP	C	58	m					+	S	2	AC	UNDEV	
GETCHELL L (UPPER)	1120	T43 MD BPP	C	51	m						S-	2	AC	UNDEV	
GILBERT P	1556	ST JOHN PLT	G	12	m							3	AC	UNDEV	
GILMAN P	0004	LEXINGTON TWP	D	242		O	S					1B	AC	UNDEV	
GILMAN P	3638	MORO PLT	G	19	m							3	AC	UNDEV	
GLAZIER L	9789	T18 R10 WELS	G	1120	S					S		2	AC	UNDEV	3
GLAZIER P	1898	T11 R12 WELS	G	10								3	INAC	UNDEV	
GOOSE P	1218	T24 MD BPP	C	16								3	AC	UNDEV	
GORDON P	0146	UPPER ENCHANTED TWP	E	28	S							3	AC	UNDEV	6
GORDON P (LITTLE)	0134	LOWER ENCHANTED TWP	D	15	S							2	AC	UNDEV	
GOULD P	0620	RAINBOW TWP	E	12	m							3	INAC	UNDEV	6
GRACE P	0152	UPPER ENCHANTED TWP	E	150	O							1B	AC	UNDEV	
GRAHAM L	4350	FLETCHER'S LANDING TWP	C	7865	S	O					O	1A	AC	DEV	3
GRAND FALLS FLOWAGE	7437	FOWLER TWP	C	6691	O	O						1A	AC	UNDEV	4
GRAND L (EAST)	1070	FOREST CITY TWP	F	16070	O	O					S+	1A	AC	UNDEV	
GRAND L (WEST)	1150	T06 ND BPP	C	14340	O	O	O	O			O	1A	AC	DEV	3
GRAND LAKE SEBOIS	3011	T08 R07 WELS	G	2483	S	S	S				O	1B	AC	UNDEV	
GRANTS P	3348	MASSACHUSETTS GORE	D	20	S							2	INAC	UNDEV	
GRASS P	0104	PIERCE POND TWP	D	70	O	S						1B	AC	UNDEV	
GRASS P	2778	T09 R12 WELS	G	50								3	INAC	UNDEV	
GRASS P	3646	MORO PLT	G	55	S							2	AC	UNDEV	
GRASSY P	0660	T02 R12 WELS	E	54	S							2	AC	UNDEV	
GRASSY P	1252	T19 MD BPP	C	10								3	AC	UNDEV	
GRAY LEDGE DEADWATER	9750	CEDAR LAKE TWP	F	70	m							3	INAC	UNDEV	
GREAT WORKS P	1386	EDMUNDS TWP	C	50	S	O						1B	INAC	UNDEV	1
GREELY P	2380	DALLAS PLT	D	42		S						2	INAC	UNDEV	
GREELY P (LITTLE)	2382	DALLAS PLT	D	15	S	S						2	INAC	UNDEV	
GREELY P (THIRD)	2388	DALLAS PLT	D	14								3	INAC	UNDEV	
GREEN L #1	4518	T35 MD	C	83	m							3	AC	UNDEV	
GREEN L #2	4790	T35 MD	C	64			S					2	AC	DEV	
GREEN MTN P	3666	T06 R06 WELS	F	10	O							1B	INAC	UNDEV	1/6
GREEN P	2256	T03 R01 NBPP	F	110	S							2	INAC	UNDEV	
GREEN P	3648	MORO PLT	G	16	S							2	AC	UNDEV	
GREENBUSH P	2346	JIM POND TWP	D	24		S						2	AC	UNDEV	
GREENLAW P	1570	T12 R07 WELS	G	109	S							2	AC	UNDEV	
GREENWOOD P	0464	TB R11 WELS	F	19	S							2	INAC	UNDEV	
GREENWOOD P (BIG)	0884	ELLIOTTVILLE TWP	E	211	O		O					1A	AC	UNDEV	4
GREENWOOD P (LITTLE)	0886	ELLIOTTVILLE TWP	E	61	S		O					1B	AC	UNDEV	
GRENIER P (BIG)	2456	T04 R05 NBKP	E	110	S							2	AC	UNDEV	
GREY P	1894	T12 R13 WELS	G	28								3	INAC	UNDEV	
GROVER L (LITTLE)	7325	DAY BLOCK TWP	C	17	m							3	AC	UNDEV	
GROVER P	1244	DAY BLOCK TWP	C	68	S							2	AC	UNDEV	
GULL P	3532	DALLAS PLT	D	281	S							2	AC	DEV	
HADLEY L #1	1224	T24 MD BPP	C	15								3	AC	UNDEV	
HADLEY L #2	1226	T24 MD BPP	C	36								3	AC	UNDEV	
HAFEY P	1498	T18 R11 WELS	G	23	S							2	INAC	UNDEV	6

ALPHABETICAL LIST OF LAKES SHOWING
WILDLANDS LAKE ASSESSMENT FINDINGS

PRINCIPAL LAKE NAME	LAKE #	TOWN NAME	IF&W REG	SIZE (AC)	RESOURCE RATINGS							RESOURCE CLASS	LAND USE		MGNT CLASS
					FSH	WLD	SC	SH	BOT	CLT	PHY		ACCESS	DEV	
HALE P	2062	T02 R10 WELS	F	168	S							2	AC	UNDEV	
HALE P	2508	ALDER BROOK TWP	E	40	m+							3	INAC	UNDEV	6
HALE P	3652	MORO PLT	G	38	S							2	AC	UNDEV	
HALEY P	3534	DALLAS PLT	D	170	S							2	AC	UNDEV	
HALL P	2566	PRENTISS TWP T04 R04 NBKP	E	19	S							2	INAC	UNDEV	6
HALL P	5092	T05 R07 BKP WKR	E	42	m							3	INAC	UNDEV	6
HAMMOND P	7431	MARION TWP	C	18								3	INAC	UNDEV	
HANCOCK P	0082	LEXINGTON TWP	D	320	S						S	2	AC	DEV	
HARDY P	0958	LAKE VIEW PLT	F	125								3	INAC	UNDEV	
HARRINGTON L	0700	T03 R11 WELS	E	1332	O	S	S	S		S	O	1A	AC	UNDEV	
HARRINGTON P	0702	T03 R11 WELS	E	40	m			O				1B	INAC	UNDEV	1/6
HARROW L	1934	T10 R11 WELS	G	467	S	S	S			S		1B	AC	UNDEV	
HARROW L (LITTLE)	1936	T10 R11 WELS	G	40			S					2	AC	UNDEV	
HATHAN BOG (UPPER)	8837	COBURN GORE	D	55	m	S						2	INAC	UNDEV	
HATHORN P	4242	T04 R08 WELS	F	15	S							2	INAC	UNDEV	6
HATHORN P (LITTLE)	2298	T04 R08 WELS	F	8								3	INAC	UNDEV	6
HAY L	2178	T06 R08 WELS	F	588	S		S					2	AC	UNDEV	
HAY P	2824	T07 R11 WELS	E	19	S							2	AC	UNDEV	
HAY P	4252	T06 R08 WELS	F	134	S	S	S					2	AC	UNDEV	
HAYDEN P	0264	MAYFIELD TWP	D	10		S						2	INAC	UNDEV	
HAYMOCK L	2814	T07 R11 WELS	E	704	S		S	S		S		1B	AC	UNDEV	
HAYWIRE P	9769	T01 R05 WELS	F	25								3	INAC	DEV	
HEDGEHOG P	0284	BLANCHARD TWP	E	11								3	AC	UNDEV	
HEDGEHOG P	0556	T01 R11 WELS	E	5								3	INAC	UNDEV	6
HEDGEHOG P	0790	BOWDOIN COL GR WEST	E	40	S							2	AC	UNDEV	
HELEN P	0094	PIERCE POND TWP	D	15	O							1B	INAC	UNDEV	1/6
HENDERSON P	0532	TA R11 WELS	E	195	S		S	S				2	INAC	UNDEV	
HEWES BROOK P	1606	T14 R07 WELS	G	24								3	INAC	UNDEV	
HIGH P	0092	PIERCE POND TWP	D	7	O							1B	INAC	UNDEV	1/6
HILLS P	3686	PERKINS TWP T07 R03 NBPP	D	22								3	AC	DEV	5
HILTON P # 1	0304	KINGSBURY PLT	E	13								3	INAC	UNDEV	
HOBART BOG	7451	EDMUNDS TWP	C	30	S	O						1B	INAC	UNDEV	1
HOBART L	1388	EDMUNDS TWP	C	90	m							3	INAC	UNDEV	
HOBART P	2166	T06 R07 WELS	F	15								3	AC	UNDEV	
HOLBROOK P	0632	RAINBOW TWP	E	224	S		S	O				1B	INAC	UNDEV	6
HOLBROOK P (LITTLE)	9708	T03 R11 WELS	E	46			S	S				2	INAC	UNDEV	
HOLEB P	2652	HOLEB TWP	E	1055	S		O	O	O		P	1A	AC	DEV	4
HORSE L	1136	T37 MD BPP	C	26	m							3	AC	UNDEV	
HORSEBACK P	2164	T07 R07 WELS	F	10								3	INAC	UNDEV	
HORSERACE PONDS	0626	RAINBOW TWP	E	50	O		O	S			O	1A	INAC	UNDEV	1/6
HORSESHOE L	4706	LAKEVILLE	F	400	S		S					2	INAC	UNDEV	
HORSESHOE L	4788	T35 MD	C	202	m							3	AC	UNDEV	
HORSESHOE P	0102	PIERCE POND TWP	D	15								3	INAC	UNDEV	
HORSESHOE P	0412	BOWDOIN COL GR WEST	E	160	O		S+	S-			S-	1B	AC	DEV	
HORSESHOE P	1926	T11 R10 WELS	G	23	S		O	S				1B	AC	UNDEV	
HORSESHOE P	2540	PARLIN POND TWP	E	50	m		S+	S+				2	INAC	UNDEV	

ALPHABETICAL LIST OF LAKES SHOWING
WILDLANDS LAKE ASSESSMENT FINDINGS

PRINCIPAL LAKE NAME	LAKE #	TOWN NAME	IF&W REG	SIZE (AC)	RESOURCE RATINGS							RESOURCE CLASS	LAND USE		MGNT CLASS
					FSH	WLD	SC	SH	BOT	CLT	PHY		ACCESS	DEV	
HORSESHOE P	2686	ATTEAN TWP	E	50	m+							3	INAC	UNDEV	6
HORSESHOE P	3336	COBURN GORE	D	37		S						2	AC	UNDEV	3
HORSESHOE P	4082	CHASE STREAM TWP	D	27	O							1B	AC	UNDEV	
HORSESHOE P	4102	EAST MOXIE TWP	D	25								3	INAC	UNDEV	
HORSESHOE P	5150	T03 R05 BKP WKR	D	29		S						2	INAC	UNDEV	
HORSESHOE P	9277	T16 R09 WELS	G	15	S							2	INAC	UNDEV	6
HORSESHOE P	9823	T18 MD BPP	C	12	m							3	AC	UNDEV	
HOT BROOK L (LOWER)	1072	T08 R04 NBPP	F	713								3	INAC	UNDEV	
HOT BROOK L (UPPER)	1076	T08 R04 NBPP	F	912								3	AC	UNDEV	
HOT P	2168	T06 R07 WELS	F	70								3	AC	UNDEV	
HOULTON P	1460	T13 R16 WELS	G	19								3	INAC	UNDEV	
HOUND BROOK L	1326	DYER TWP	C	140	m							3	INAC	UNDEV	
HOUSTON P	0916	T07 R09 NWP	E	694	S		S				S-	2	AC	UNDEV	
HOUSTON P (LITTLE)	0920	KATAHDIN IRN WKS TWP	F	27	O						S	1B	INAC	UNDEV	6
HUDSON P (LITTLE)	2742	T10 R10 WELS	G	12								3	AC	UNDEV	
HUDSON P (LOWER)	1954	T10 R10 WELS	G	108	S		O	S				1B	AC	UNDEV	
HUDSON P (UPPER)	1928	T11 R10 WELS	G	32	O		O					1A	INAC	UNDEV	1
HUMPBACK BOG	4488	T28 MD	C	32	S	S						2	INAC	UNDEV	
HUNNEWELL L	1554	ST JOHN PLT	G	64	S							2	AC	UNDEV	
HUNTLEY P	3640	MORO PLT	G	13								3	INAC	UNDEV	
HURD P	2064	T02 R10 WELS	F	640	S		O	S				1B	AC	DEV	
HURD P (BIG)	4014	T06 R15 WELS	E	250	S		O				S	1B	AC	UNDEV	
HURD P (LITTLE)	0596	T02 R10 WELS	F	60	S		O	S			S	1B	INAC	UNDEV	1/6
HURD P (LITTLE)	4016	T06 R15 WELS	E	180		S	S					2	INAC	UNDEV	
HURRICANE P	5046	KIBBY TWP	D	20		S						2	INAC	UNDEV	
HURRICANE P	5166	T05 R20 WELS	E	54	S							2	AC	UNDEV	
HUSSEY P	0292	BLANCHARD TWP	E	15								3	INAC	DEV	
HUSTON BROOK P	7304	DEAD RIVER TWP	D	7	O							1B	AC	UNDEV	
HUTCH P	2498	HAMMOND TWP	E	11								3	INAC	UNDEV	
HUTCHINSON P	0492	TA R11 WELS	E	15								3	INAC	UNDEV	
HUTCHINSON P	3494	ALBANY TWP	A	96	S							2	AC	DEV	5
IMLOS P	2714	T06 R11 WELS	E	10								3	AC	UNDEV	
INDIAN & DAM PONDS	0814	T07 R09 NWP	E	299	S		S			S		2	AC	UNDEV	
INDIAN L	1242	T19 ED BPP	C	13						S-		2	INAC	UNDEV	
INDIAN P	0002	LEXINGTON TWP	D	53								3	AC	UNDEV	
INDIAN P	0782	BOWDOIN COL GR WEST	E	70	S							2	AC	UNDEV	
INDIAN P	2866	T07 R12 WELS	E	1222	S							2	AC	UNDEV	
INDIAN P	4090	SAPLING TWP	E	3746	S	O				S		1B	AC	DEV	3
INDIAN P (BIG)	0324	MOOSEHEAD JUNCTION TWP	E	280	S							2	AC	DEV	
INDIAN P (LITTLE)	2808	T07 R12 WELS	E	117						S		2	AC	UNDEV	
INDIAN P (LITTLE)	4070	SQUARETOWN TWP	D	25								3	AC	UNDEV	
IRA BOG	0332	MOOSEHEAD JUNCTION TWP	E	28		S						2	AC	UNDEV	
IRELAND P	4168	T07 R08 WELS	F	30	O							1B	INAC	UNDEV	1/6
IRON P	5106	HAYNESTOWN TWP	E	32	S							2	AC	DEV	
IRONBOUND P	2510	ALDER BROOK TWP	E	40	O		O	O		O		1A	AC	UNDEV	2
ISLAND (CHASE) P	1942	T10 R10 WELS	G	214	S		S					2	AC	UNDEV	

**ALPHABETICAL LIST OF LAKES SHOWING
WILDLANDS LAKE ASSESSMENT FINDINGS**

PRINCIPAL LAKE NAME	LAKE #	TOWN NAME	IF&W REG	SIZE (AC)	RESOURCE RATINGS							RESOURCE CLASS	LAND USE		MGNT CLASS
					FSH	WLD	SC	SH	BOT	CLT	PHY		ACCESS	DEV	
ISLAND P	1516	T15 R09 WELS	G	32	S							2	AC	UNDEV	
ISLAND P	1586	T14 R08 WELS	G	27	S							2	AC	UNDEV	
ISLAND P	4094	CHASE STREAM TWP	D	24	O							1B	AC	UNDEV	
ISLAND P (BIG)	3352	SEVEN PONDS TWP	D	350	S			S				2	AC	UNDEV	
ISLAND P (LITTLE)	3350	SEVEN PONDS TWP	D	50	S							2	AC	UNDEV	
ISLAND P (UPPER)	2740	T10 R10 WELS	G	45								3	INAC	UNDEV	
ISTHMUS P	2000	T08 R08 WELS	G	23								3	INAC	UNDEV	
JACK P	4140	T07 R10 WELS	F	10								3	INAC	UNDEV	
JACKSON BROOK L	1334	FOREST TWP	F	480								3	AC	DEV	
JACKSON P	0182	CONCORD TWP	D	32				O	S			1B	AC	UNDEV	
JACKSON P #1	0684	T03 R11 WELS	E	23								3	INAC	UNDEV	6
JACKSON P #2	0704	T03 R11 WELS	E	12	S			O	O			1A	AC	UNDEV	2
JERRY P	2122	MILLINOCKET	F	66	S							2	AC	UNDEV	
JERRY P	2190	T05 R07 WELS	F	272	S			O	S			1B	INAC	UNDEV	1
JEWETT P	0050	PLEASANT RIDGE PLT	D	32								3	AC	UNDEV	
JEWETT P	0460	SPENCER BAY TWP	E	13	S							2	INAC	UNDEV	
JIM P	5054	JIM POND TWP	D	320	O	O	O	S+				1A	AC	UNDEV	2
JIM P (LITTLE)	5090	JIM POND TWP	D	64	S							2	AC	UNDEV	
JIMMIES P	8259	T34 MD	C	26	m							3	AC	UNDEV	
JO-MARY L (LOWER)	0984	T01 R10 WELS	F	1910	S			O		S	S	1B	INAC	UNDEV	1
JO-MARY L (MIDDLE)	0986	T04 INDIAN PURCHASE TWP	F	1152	S			O	S	S	S	1A	AC	DEV	3
JO-MARY L (UPPER)	0243	TA R10 WELS	F	1873	O			O	S		S	1A	AC	UNDEV	2
JO-MARY P	0476	TB R10 WELS	F	38	S							2	AC	UNDEV	
JO-MARY S DWTR (UP)	9630	T04 INDIAN PURCHASE TWP	F	30						S		2	AC	UNDEV	
JOE POKUM P	5126	KING & BARTLETT TWP	D	13								3	INAC	UNDEV	
JOHNS P	0144	LOWER ENCHANTED TWP	D	15								3	AC	UNDEV	
JOHNS P	3956	DAVIS TWP	D	267	S							2	AC	UNDEV	
JOHNSON P	2986	T08 R14 WELS	E	197	S			O	S		O	1A	AC	UNDEV	
JOHNSTON P	0534	TA R10 WELS	F	59	S			O				1B	AC	UNDEV	
JONES P	0172	WYMAN TWP	D	36				O				1B	INAC	UNDEV	1
JONES P	1500	BIG TWENTY TWP	G	77	S							2	AC	UNDEV	
JONES P	2486	BALD MTN TWP T4R3	E	130	S							2	AC	UNDEV	
JONES P	3002	T07 R08 WELS	F	32	S							2	INAC	UNDEV	
JUNIOR L	4708	PUKAKON TWP	F	3866	S			S	S	S		1B	AC	UNDEV	
JUNIPER KNEE P	0878	ELLIOTTSVILLE TWP	E	32	S							2	INAC	UNDEV	6
KAMANKEAG P	3954	DAVIS TWP	D	40	O			S				1B	AC	UNDEV	
KATAHDIN L	2016	T03 R08 WELS	F	717	S			O	O	S	S	1A	INAC	UNDEV	1
KEG L	4700	LAKEVILLE	F	378	S			S	S			2	INAC	UNDEV	
KELLY P	0654	T02 R12 WELS	E	60	S							2	INAC	UNDEV	6
KELLY P (LITTLE)	0658	T02 R12 WELS	E	21								3	INAC	UNDEV	
KENNEBAGO L (BIG)	2374	DAVIS TWP	D	1700	O	O	O	O		S-	O	1A	AC	DEV	4
KENNEBAGO L (LITTLE)	3958	STETSONTOWN TWP	D	190	O						+	1B	AC	DEV	
KIDNEY P	2926	E MIDDLESEX CANAL GR	E	45	m	S						2	AC	UNDEV	
KILGORE P	0108	PIERCE POND TWP	D	96	S	S						2	AC	UNDEV	
KILGORE P (UPPER)	0106	BOWTOWN TWP	D	12								3	INAC	UNDEV	
KIMBALL P	4245	T05 R08 WELS	F	64	S			S				2	INAC	UNDEV	

ALPHABETICAL LIST OF LAKES SHOWING
WILDLANDS LAKE ASSESSMENT FINDINGS

PRINCIPAL LAKE NAME	LAKE #	TOWN NAME	IF&W REG	SIZE (AC)	RESOURCE RATINGS							RESOURCE CLASS	LAND USE		MGNT CLASS
					FSH	WLD	SC	SH	BOT	CLT	PHY		ACCESS	DEV	
KING & BARTLETT L	5136	KING & BARTLETT TWP	D	538	O						S	1B	AC	UNDEV	
KING L (LITTLE)	5138	KING & BARTLETT TWP	D	90	S			S				2	AC	UNDEV	
KING P	0111	BOWTOWN TWP	D	16	S							2	INAC	UNDEV	
KINGSBURY P	0262	MAYFIELD TWP	D	390	S						S	2	AC	DEV	5
KINGSLEY BOG	0276	MAYFIELD TWP	D	10		S						2	AC	UNDEV	
KINGSLEY FLOWAGE	7148	MAYFIELD TWP	D	14		S					S	2	INAC	UNDEV	
KNEELAND P	3266	ALBANY TWP	A	16	m			S				2	AC	DEV	5
KNIGHTS P	0377	SQUARETOWN TWP	D	128					S			2	INAC	UNDEV	
KNOX L	1142	T36 MD BPP	C	51	m							3	AC	UNDEV	
KYLE P	2810	T07 R12 WELS	E	25								3	AC	UNDEV	
L POND	5062	SEVEN PONDS TWP	D	95	S							2	INAC	UNDEV	
LA POMKEAG L (LOWER)	3010	T08 R07 WELS	G	91								3	AC	UNDEV	
LA POMKEAG L (UPPER)	3012	T08 R07 WELS	G	217								3	AC	UNDEV	
LAMBERT L	1332	T11 R03 NBPP	F	605	S		S	S	S			1B	AC	DEV	
LANE BROOK P	3664	T06 R06 WELS	F	33								3	INAC	UNDEV	6
LANE P	2490	COMSTOCK TWP	E	24	S						O	1B	INAC	UNDEV	1/6
LANE P (LITTLE)	2502	HAMMOND TWP	E	18	S							2	AC	UNDEV	
LANG P	2542	PARLIN POND TWP	E	30	O							1B	INAC	UNDEV	1/6
LANG P (LITTLE)	2543	PARLIN POND TWP	E	13	O							1B	INAC	UNDEV	1/6
LARD P	2442	ELM STREAM TWP	E	14								3	INAC	UNDEV	
LAZY TOM P	0458	T01 R13 WELS	E	17	S							2	INAC	UNDEV	
LEAD MTN P (LO & MD)	4484	T28 MD	C	486	m			S				2	AC	DEV	
LEAD MTN P (UPPER)	4482	T28 MD	C	1021	S			S	S			2	AC	DEV	
LEADBETTER P	2764	T09 R11 WELS	G	98	S	S	S-					2	AC	UNDEV	
LEADBETTER P	2880	T07 R12 WELS	E	135								3	INAC	UNDEV	
LEADBETTER P (LT)	2700	T07 R11 WELS	E	147								3	INAC	UNDEV	
LEAVITT P	0546	T01 R11 WELS	E	50	S							2	AC	UNDEV	
LEDGE P	3554	SANDY RIVER PLT	D	6								3	INAC	UNDEV	6
LEITH P	4124	BRASSUA TWP	E	18		S						2	INAC	UNDEV	
LEONARD P	1988	T10 R09 WELS	G	38		S						2	INAC	UNDEV	
LEWIS P	2862	SOPER MOUNTAIN TWP	G	30							P	3	INAC	UNDEV	
LILY (MERRILL) P	0180	CONCORD TWP	D	25								3	AC	DEV	
LILY L	1164	T30 MD BPP	C	32								3	AC	UNDEV	
LILY L	1396	TRESCOTT TWP	C	31	S							2	AC	UNDEV	
LILY P	0178	CONCORD TWP	D	10								3	AC	UNDEV	
LINCOLN P	0988	T04 INDIAN PURCHASE TWP	F	30								3	INAC	UNDEV	
LINCOLN P	3964	PARKERTOWN TWP	D	340	S	S						2	INAC	UNDEV	
LINE P	2806	T07 R11 WELS	E	20								3	INAC	UNDEV	
LINE P	5162	T05 R20 WELS	E	7								3	INAC	UNDEV	6
LINSCOTT P	1452	T13 R16 WELS	G	75								3	INAC	UNDEV	
LITTLE BOG	2404	T06 R17 WELS	E	128								3	AC	UNDEV	
LITTLE L	7513	BARING PLT	C	275	S							2	AC	UNDEV	
LITTLE P	0302	KINGSBURY PLT	E	10								3	INAC	UNDEV	
LLOYD P	0462	BOWDOIN COL GR EAST	E	10								3	AC	UNDEV	
LOBSTER L	2948	LOBSTER TWP	E	3475	O	O	O	O	O	S	O	1A	AC	UNDEV	2
LOBSTER L (LITTLE)	2946	LOBSTER TWP	E	230	S							2	AC	UNDEV	

ALPHABETICAL LIST OF LAKES SHOWING
WILDLANDS LAKE ASSESSMENT FINDINGS

PRINCIPAL LAKE NAME	LAKE #	TOWN NAME	IF&W REG	SIZE (AC)	RESOURCE RATINGS							RESOURCE CLASS	LAND USE		MGNT CLASS
					FSH	WLD	SC	SH	BOT	CLT	PHY		ACCESS	DEV	
LOGAN P # 1	2080	T02 R09 WELS	F	29								3	INAC	UNDEV	
LOGAN P # 2	2082	T02 R09 WELS	F	20			O	S				1B	INAC	UNDEV	1
LOMBARD L	4690	LAKEVILLE	F	225	S		O					1B	AC	UNDEV	
LONE JACK P	2556	JOHNSON MOUNTAIN TWP	E	15								3	AC	UNDEV	
LONG (LITTLE LONG) P	5794	CHASE STREAM TWP	D	17	S		+					2	AC	UNDEV	
LONG (MARTIN) P	4108	THE FORKS PLT	D	26	S							2	AC	DEV	5
LONG BOG	0450	SHAWTOWN TWP	E	15	S							2	AC	UNDEV	
LONG BOG	2668	HOLEB TWP	E	19	m							3	INAC	UNDEV	6
LONG L	1264	T19 ED BPP	C	698	m							3	AC	UNDEV	
LONG L	1370	MARION TWP	C	130								3	AC	UNDEV	
LONG L	1682	VAN BUREN COVE TWP	G	6000	S					S		2	AC	DEV	
LONG L	1892	T12 R13 WELS	G	1203	O	O*				S	S	1A	AC	UNDEV	2
LONG P	0506	TA R11 WELS	E	371	O						S	1B	AC	UNDEV	
LONG P	0800	T07 R09 NWP	E	643	S		S			S-		2	AC	UNDEV	
LONG P	1200	T18 MD BPP	C	15								3	AC	DEV	5
LONG P	1596	T13 R08 WELS	G	13								3	AC	UNDEV	
LONG P	1922	T11 R10 WELS	G	128	S		S					2	AC	UNDEV	
LONG P	2536	LONG POND TWP	E	3053	S	S	O	S		S		1A	AC	DEV	3
LONG P	2646	FORSYTH TWP	E	98	S							2	AC	UNDEV	
LONG P	2690	ATTEAN TWP	E	37	m							3	INAC	UNDEV	6
LONG P	3116	LYNCHTOWN TWP	D	8						S-		2	AC	UNDEV	
LONG P	3320	MAGALLOWAY TWP	D	10								3	INAC	UNDEV	
LONG P	3356	SEVEN PONDS TWP	D	35	S							2	AC	UNDEV	3
LONG P	3582	TOWNSHIP E	D	254	S							2	INAC	DEV	
LONG P	4118	TAUNTON & RAYNHAM	E	173	S							2	AC	DEV	
LONG P	4430	T10 SD	C	205	S		S	S				2	AC	UNDEV	
LONG P	5124	KING & BARTLETT TWP	D	60	S	S						2	AC	UNDEV	
LONG P	9861	DOLE BROOK TWP	E	845	S		S	S				2	AC	UNDEV	
LONG P (LITTLE)	4424	T10 SD	C	55	S		O	S				1B	INAC	UNDEV	1/6
LONGLEY P	2886	T06 R13 WELS	E	749	S	S						2	INAC	UNDEV	
LONGLEY P (LITTLE)	2888	T06 R13 WELS	E	20								3	INAC	UNDEV	
LOON L	2384	DALLAS PLT	D	168	S					S-		2	AC	DEV	5
LOON L	4024	T06 R15 WELS	E	1140	S	O	S	S			O	1A	AC	UNDEV	
LOON P	0453	T40 MD	F	13	S							2	AC	UNDEV	
LOON P	0554	T01 R11 WELS	E	5								3	INAC	UNDEV	6
LOON P	2688	ATTEAN TWP	E	37	O		+	+	+			1B	INAC	UNDEV	1/6
LOST P	0208	PLEASANT RIDGE PLT	D	18	S							2	INAC	UNDEV	
LOST P	0820	T07 R09 NWP	E	15								3	INAC	UNDEV	
LOST P	1658	T15 R06 WELS	G	10								3	INAC	UNDEV	
LOST P	1690	ISLAND FALLS	F	13								3	INAC	UNDEV	
LOST P	1924	T11 R10 WELS	G	58	+							3	INAC	UNDEV	
LOST P	1984	T10 R08 WELS	G	10								3	INAC	UNDEV	
LOST P	2420	RUSSELL POND TWP	E	45	S							2	AC	UNDEV	
LOST P	2526	THORNDIKE TWP	E	10								3	INAC	UNDEV	
LOST P	2694	ATTEAN TWP	E	5								3	INAC	UNDEV	6
LOST P	2878	T07 R13 WELS	E	47								3	INAC	UNDEV	

ALPHABETICAL LIST OF LAKES SHOWING
WILDLANDS LAKE ASSESSMENT FINDINGS

PRINCIPAL LAKE NAME	LAKE #	TOWN NAME	IF&W REG	SIZE (AC)	RESOURCE RATINGS							RESOURCE CLASS	LAND USE		MGNT CLASS
					FSH	WLD	SC	SH	BOT	CLT	PHY		ACCESS	DEV	
LOST P	3030	T07 R07 WELS	F	38	S							2	AC	UNDEV	
LOST P	3042	UPPER MOLUNKUS TWP	F	18								3	INAC	UNDEV	
LOST P	5146	T03 R05 BKP WKR	D	15								3	AC	UNDEV	
LOVE L	1238	T19 ED BPP	C	672	S						O	1B	AC	UNDEV	
LOVEJOY P	4506	T34 MD	C	40	S							2	AC	DEV	
LOWELL L	4680	CARROLL PLT	F	115								3	AC	UNDEV	
LOWER P	8255	T35 MD	C	16								3	INAC	UNDEV	
LUCIA P	0810	T07 R09 NWP	E	46			S					2	AC	UNDEV	
LUCIFEE P	9755	T14 R08 WELS	G	13								3	AC	UNDEV	
LUCKY P	0402	SPENCER BAY TWP	E	93		S					S	2	AC	UNDEV	
LUNKSOOS L	2206	T04 R07 WELS	F	288	S		S	S				2	INAC	UNDEV	
LUTHER P	2528	THORNDIKE TWP	E	154	S							2	AC	UNDEV	
LYFORD P (BIG)	0438	SHAWTOWN TWP	E	152	O						O	1A	AC	DEV	4
LYFORD P(1ST LITTLE)	0430	BOWDOIN COL GR EAST	E	21	S							2	AC	UNDEV	
LYFORD P(2ND LITTLE)	0428	BOWDOIN COL GR EAST	E	18	S							2	AC	UNDEV	
MACHIAS L (BIG)	1960	T12 R08 WELS	G	692	S	S					S	2	AC	UNDEV	3
MACHIAS L (FIFTH)	1144	T36 MD BPP	C	1069	m						S	2	AC	UNDEV	
MACHIAS L (FIRST)	1140	T37 MD BPP	C	109	S						S	2	AC	DEV	
MACHIAS L (FOURTH)	1148	SAKOM TWP	C	1539	O	S	+				S	1B	AC	UNDEV	
MACHIAS L (LITTLE)	1578	NASHVILLE PLT	G	275	S	S						2	AC	UNDEV	3
MACHIAS L (SECOND)	1138	T37 MD BPP	C	192	S						S	2	AC	DEV	
MACHIAS L (THIRD)	1124	T42 MD BPP	C	2778	O	O	+	+	+	S	+	1A	AC	UNDEV	2
MACWAHOC L (LOWER)	3058	T02 R04 WELS	F	188								3	AC	UNDEV	
MACWAHOC L (UPPER)	3052	T03 R04 WELS	F	269	S							2	AC	UNDEV	
MADAGASCAL P (BIG)	2254	T03 R01 NBPP	F	750	S							2	AC	UNDEV	
MADAGASCAL P(LITTLE)	2258	T03 R01 NBPP	F	40	S							2	AC	UNDEV	
MADAWASKA L	1802	MADAWASKA LAKE TWP	G	1526	S	S				O	S	1B	AC	DEV	5
MARBLE P	0280	BLANCHARD TWP	E	15	S							2	AC	UNDEV	
MARBLE P	2186	T05 R08 WELS	F	75	S		S	S	O		O	1A	INAC	UNDEV	1
MARCIAL L	1636	WALLAGRASS	G	13								3	INAC	UNDEV	
MARTIN L	1858	CASWELL	G	13								3	INAC	UNDEV	
MARY PETUCHE P	2474	PRENTISS TWP T04 R04 NBKP	E	10	S						O	1B	INAC	UNDEV	1/6
MASSACHUSETTS BOG	8597	MASSACHUSETTS GORE	D	30	O							1B	AC	UNDEV	
MATAGAMON L	4260	T06 R08 WELS	F	4165	S	O	S	S	O	O		1A	AC	UNDEV	
MATHERSON P	3072	T09 R05 WELS	G	45								3	AC	UNDEV	
MATHEWS P	2836	T08 R10 WELS	G	19	O							1B	INAC	UNDEV	1
MATTAMISCONTIS L	2140	CEDAR LAKE TWP	F	1025	S							2	INAC	UNDEV	
MATTAMISCONTIS L(LT)	2138	CEDAR LAKE TWP	F	275	S							2	AC	UNDEV	3
MATTASEUNK L	3040	MOLUNKUS TWP	F	576	S							2	AC	DEV	3
MATTAWAMKEAG L	1686	T04 R03 WELS	F	3330	S	O	S	O		S	S	1A	AC	UNDEV	
MAY P	2826	T07 R11 WELS	E	30								3	INAC	UNDEV	
MAYFIELD P	0260	MAYFIELD TWP	D	140	S							2	AC	DEV	
MCCLUSKY L	1660	T14 R05 WELS	G	49	m							3	AC	UNDEV	
MCDUGAL P	4022	T06 R15 WELS	E	11								3	INAC	UNDEV	
MCGILVRY P	3082	T08 R06 WELS	G	25								3	INAC	UNDEV	
MCGOOSELEY P	4032	T04 R15 WELS	E	38		S						2	AC	UNDEV	

**ALPHABETICAL LIST OF LAKES SHOWING
WILDLANDS LAKE ASSESSMENT FINDINGS**

PRINCIPAL LAKE NAME	LAKE #	TOWN NAME	IF&W REG	SIZE (AC)	RESOURCE RATINGS							RESOURCE CLASS	LAND USE		MGNT CLASS
					FSH	WLD	SC	SH	BOT	CLT	PHY		ACCESS	DEV	
MCGOWAN P	1962	T11 R08 WELS	G	160								3	INAC	UNDEV	
MCKEEN L	1476	T14 R10 WELS	G	147	S	+						2	AC	UNDEV	
MCKENNA P	0688	T03 R11 WELS	E	53	m		O	S				1B	INAC	UNDEV	1/6
MCKENNEY P	0154	UPPER ENCHANTED TWP	E	9								3	INAC	UNDEV	6
MCKENNEY P	2650	HOLEB TWP	E	38	S					O		1B	AC	UNDEV	
MCLELLAN P	0364	ELLIOTTSVILLE TWP	E	15								3	INAC	UNDEV	
MCNALLY P (UPPER)	1930	T11 R10 WELS	G	83	S							2	AC	UNDEV	
MCPHERSON P	1992	T10 R10 WELS	G	77	S							2	AC	UNDEV	
MEDDYBEMPS L	0177	BARING PLT	C	6765	O				S			1B	AC	UNDEV	
MEDUNKEUNK L	2132	T02 R09 NWP	F	67	S							2	AC	DEV	
MESSER P	4244	T05 R08 WELS	F	27	S							2	INAC	UNDEV	6
MESSER P (LITTLE)	5806	T05 R08 WELS	F	30								3	INAC	UNDEV	
METALLAK P	3326	TOWNSHIP C	D	75								3	INAC	UNDEV	
MIDDAY P	0890	ELLIOTTSVILLE TWP	E	12	m							3	INAC	UNDEV	
MIDDLE DEADWATER	1099	KOSSUTH TWP	F	50								3	AC	UNDEV	
MIDNIGHT P	2708	T06 R12 WELS	E	64								3	INAC	UNDEV	
MIDWAY P	3544	SANDY RIVER PLT	D	7								3	INAC	UNDEV	6
MILE P	2982	T08 R14 WELS	E	66								3	INAC	UNDEV	
MILL (CLEAR) P	0200	PLEASANT RIDGE PLT	D	23	S							2	AC	UNDEV	
MILL PRIVILEGE L	4704	PUKAKON TWP	F	109								3	AC	UNDEV	
MILLMAGASSETT L	3004	T07 R08 WELS	F	1410	S	O	+	+				1B	INAC	UNDEV	1
MILLINOCKET L	2020	T01 R08 WELS	F	8960	S	O	S+	S+	+	S	S+	1A	AC	UNDEV	
MILLINOCKET L	4156	T07 R09 WELS	F	2701	S	S+	S	S	+	O	+	1A	AC	UNDEV	
MINISTER L (LITTLE)	0592	T02 R10 WELS	F	4								3	INAC	UNDEV	6
MINISTER P (BIG)	0590	T02 R10 WELS	F	15	O							1B	INAC	UNDEV	1/6
MINK MARSH P	1982	T10 R10 WELS	G	13	S	S						2	AC	UNDEV	
MINK P	1478	T14 R10 WELS	G	21								3	AC	UNDEV	
MISERY P	5800	MISERY TWP	E	36	S		S-	S+			+	2	AC	UNDEV	
MISERY P (UPPER)	5802	MISERY TWP	E	18	S							2	AC	UNDEV	
MITCHELL P	9757	T07 R09 WELS	F	30								3	AC	UNDEV	
MOCCASIN P	1590	T14 R08 WELS	G	32	O							1B	AC	UNDEV	1
MOLUNKUS L	3038	MOLUNKUS TWP	F	1050	S							2	AC	DEV	
MONKEY P	0526	TA R11 WELS	E	30	S							2	INAC	UNDEV	
MONROE L	1126	T43 MD BPP	C	45	S	S						2	AC	UNDEV	
MONROE P (EAST)	9641	T43 MD BPP	C	10	S							2	AC	UNDEV	
MONROE P (WEST)	9811	T43 MD BPP	C	13	S							2	AC	UNDEV	
MONTEGAIL P	1196	T19 MD BPP	C	170	S							2	AC	UNDEV	
MOORE P	5096	BRADSTREET TWP	E	47	S				O			1B	AC	UNDEV	
MOOSE BOG	7688	BOWMANTOWN TWP	D	40	S	S						2	INAC	UNDEV	
MOOSE P	0118	BOWTOWN TWP	D	11	S							2	INAC	UNDEV	
MOOSE P	0902	ELLIOTTSVILLE TWP	E	14	m							3	AC	UNDEV	
MOOSE P (BIG)	0334	MOOSEHEAD JUNCTION TWP	E	91	O					S		1B	INAC	UNDEV	1/6
MOOSE P (LITTLE)	0336	MOOSEHEAD JUNCTION TWP	E	25	O					S		1B	INAC	UNDEV	1/6
MOOSE P (LITTLE)	4152	T07 R10 WELS	F	25								3	AC	UNDEV	
MOOSE P (UPPER)	2828	T07 R10 WELS	F	35								3	INAC	UNDEV	
MOOSEHEAD L	0390	MOOSEHEAD JUNCTION TWP	E	74890	O	O	O	O	O	O	O	1A	AC	DEV	

ALPHABETICAL LIST OF LAKES SHOWING
WILDLANDS LAKE ASSESSMENT FINDINGS

PRINCIPAL LAKE NAME	LAKE #	TOWN NAME	IF&W REG	SIZE (AC)	RESOURCE RATINGS							RESOURCE CLASS	LAND USE		MGNT CLASS
					FSH	WLD	SC	SH	BOT	CLT	PHY		ACCESS	DEV	
MOOSEHEAD L #1	MH01	COVE POINT TWP	E	6091	O	O	O	S	O	O	O	1A	AC	DEV	
MOOSEHEAD L #2	MH02	BEAVER COVE	E	12066	O	O	O	S	O	O	O	1A	AC	DEV	
MOOSEHEAD L #3	MH03	LILY BAY TWP	E	6072	O	O	O	S	O	O	O	1A	AC	DEV	
MOOSEHEAD L #4	MH04	SANDBAR TRACT TWP	E	12046	O	O	S	S	O	O	O	1A	AC	DEV	
MOOSEHEAD L #5	MH05	SPENCER BAY TWP	E	4710	O	O	O	S	O	O	O	1A	AC	UNDEV	
MOOSEHEAD L #6	MH06	TOMHEGAN TWP	E	9925	O	O	O		O	O	O	1A	AC	DEV	
MOOSEHEAD L #7	MH07	DAYS ACADEMY GRANT	E	8037	O	O	O	S	O	O	O	1A	AC	DEV	
MOOSEHEAD L #8	MH08	NORTHEAST CARRY TWP	E	15802	O	O	O	O	O	O	O	1A	AC	DEV	
MOOSELEUK L	1990	T10 R09 WELS	G	422	S	O*	O-				O	1A	AC	UNDEV	2
MOOSELOOKMEGUNTIC L*	3302	RICHARDSONTOWN TWP	D	16300	O	O	O	O			O	1A	AC	DEV	
MOOSELOOKMEGUNTIC L*	MLML	RICHARDSONTOWN TWP	D	14101	O	O	S	O			O	1A	AC	DEV	
MOPANG L	1172	DEVEREAUX TWP	C	1487	O		S	S				1B	AC	UNDEV	
MOPANG L (FIRST)	7339	T30 MD BPP	C	27	S							2	AC	DEV	
MOPANG L (SECOND)	1170	DEVEREAUX TWP	C	145	S							2	AC	UNDEV	
MORANCY P	4394	T07 SD	C	64								3	AC	UNDEV	
MORRELL P	4262	T07 R08 WELS	F	40								3	INAC	UNDEV	
MOSQUITO BROOK P	1604	T14 R07 WELS	G	10	S							2	AC	UNDEV	
MOSQUITO P	4052	THE FORKS PLT	D	71	S	S	O	S				1B	AC	UNDEV	
MOUNTAIN BROOK P	0414	BOWDOIN COL GR WEST	E	21	O		+					1B	AC	UNDEV	
MOUNTAIN CATCHER P	4258	T06 R08 WELS	F	84	S							2	INAC	UNDEV	6
MOUNTAIN P	0432	BEAVER COVE	E	56	S					S		2	INAC	UNDEV	6
MOUNTAIN P	1956	T10 R10 WELS	G	80	S	S	S	+		+		2	AC	UNDEV	
MOUNTAIN P	2989	T08 R15 WELS	E	30								3	AC	UNDEV	
MOUNTAIN P	3540	RANGELEY PLT	D	35	O							1B	AC	UNDEV	
MOUNTAIN VIEW P	0269	BIG MOOSE TWP	E	550	S							2	AC	UNDEV	
MOUNTAIN VIEW P	0488	TA R11 WELS	E	13	S							2	INAC	UNDEV	6
MOXIE BOG	7106	BALD MTN TWP T2R3	D	15	S							2	AC	UNDEV	
MOXIE P	3585	TOWNSHIP D	D	6								3	INAC	UNDEV	6
MOXIE P	4050	EAST MOXIE TWP	D	2370	S		O	S		S	P	1B	AC	DEV	
MOXIE P (LITTLE)	0316	EAST MOXIE TWP	D	73	S						O	1B	AC	UNDEV	
MT CATCHER P(LITTLE)	9922	T06 R08 WELS	F	13								3	INAC	UNDEV	
MUD BROOK FLOWAGE	9632	T02 R08 WELS	F	50			S					2	INAC	UNDEV	
MUD GAUNTLET DEADWTR	0470	TB R11 WELS	F	10								3	INAC	UNDEV	
MUD L	1680	SINCLAIR TWP	G	972	S					S		2	AC	DEV	
MUD L	1688	T03 R03 WELS	F	122								3	INAC	UNDEV	
MUD L	1732	T04 R03 WELS	F	153								3	INAC	UNDEV	
MUD L	1866	CASWELL	G	19								3	INAC	UNDEV	
MUD L	7399	FOREST CITY TWP	F	291							+	3	AC	DEV	
MUD P	0330	MOOSEHEAD JUNCTION TWP	E	10								3	INAC	UNDEV	
MUD P	0398	BEAVER COVE	E	249		S				S		2	INAC	UNDEV	
MUD P	0542	TA R10 WELS	F	225			S					2	AC	UNDEV	
MUD P	1496	T19 R11 WELS	G	21								3	INAC	UNDEV	
MUD P	1532	T15 R09 WELS	G	63								3	INAC	UNDEV	
MUD P	1546	T13 R08 WELS	G	30		S						2	AC	UNDEV	
MUD P	1600	T13 R07 WELS	G	19								3	INAC	UNDEV	

* This lake has multiple management classes corresponding to sections of the lake. Refer to the official zoning map for designations.

ALPHABETICAL LIST OF LAKES SHOWING
WILDLANDS LAKE ASSESSMENT FINDINGS

PRINCIPAL LAKE NAME	LAKE #	TOWN NAME	IF&W REG	SIZE (AC)	RESOURCE RATINGS							RESOURCE CLASS	LAND USE		MGNT CLASS
					FSH	WLD	SC	SH	BOT	CLT	PHY		ACCESS	DEV	
MUD P	1874	T12 R17 WELS	G	49								3	AC	UNDEV	
MUD P	2066	T02 R10 WELS	F	20								3	INAC	UNDEV	
MUD P	2182	T06 R08 WELS	F	254								3	AC	UNDEV	
MUD P	2340	TOWNSHIP 6 N OF WELD	D	6								3	INAC	UNDEV	6
MUD P	2360	TIM POND TWP	D	30	S							2	AC	UNDEV	
MUD P	2530	THORNDIKE TWP	E	50								3	AC	UNDEV	
MUD P	2618	BALD MTN TWP T4R3	E	12								3	INAC	UNDEV	
MUD P	2648	HOLEB TWP	E	17								3	AC	UNDEV	
MUD P	2696	ATTEAN TWP	E	90			S-					2	AC	UNDEV	
MUD P	2884	T06 R12 WELS	E	1357								3	INAC	UNDEV	
MUD P	2908	T04 R12 WELS	E	392		S				S		2	INAC	UNDEV	
MUD P	2968	T09 R15 WELS	G	173								3	INAC	UNDEV	
MUD P	3092	DREW PLT	F	250		O						1B	AC	UNDEV	
MUD P	3334	COBURN GORE	D	25								3	AC	UNDEV	
MUD P	3538	RANGELEY PLT	D	15								3	INAC	UNDEV	
MUD P	4056	MOXIE GORE	D	18								3	INAC	UNDEV	
MUD P	4084	CHASE STREAM TWP	D	20								3	INAC	UNDEV	
MUD P	5068	BEATTIE TWP	E	12								3	INAC	UNDEV	
MUD P	9917	JIM POND TWP	D	14	S							2	AC	DEV	3
MUD P (LITTLE)	0738	T04 R12 WELS	E	43								3	AC	UNDEV	
MUD P (LITTLE)	2180	T06 R08 WELS	F	15								3	INAC	UNDEV	
MULE BROOK DEADWATER	9796	T10 R10 WELS	G	23	+							3	AC	UNDEV	
MULE P	2422	RUSSELL POND TWP	E	14			S					2	INAC	UNDEV	
MUNSON L	1350	BERRY TWP	C	40								3	INAC	UNDEV	
MUNSUNGAN L	4180	T08 R10 WELS	G	1415	O		O	S		O		1A	AC	UNDEV	2
MURPHY P	0486	TA R11 WELS	E	12								3	INAC	UNDEV	6
MURPHY P (BIG)	0638	RAINBOW TWP	E	15	S							2	INAC	UNDEV	6
MUSCALSEA P (BIG)	4036	RUSSELL POND TWP	E	14	m		S					2	INAC	UNDEV	6
MUSCALSEA P (LITTLE)	4034	RUSSELL POND TWP	E	11	m							3	INAC	UNDEV	6
MUSKRAT P	2532	THORNDIKE TWP	E	100								3	AC	UNDEV	
MUSQUACOOK L (1ST)	1914	T11 R11 WELS	G	698	S					S		2	AC	UNDEV	
MUSQUACOOK L (2ND)	1916	T11 R11 WELS	G	813	S					S		2	AC	UNDEV	
MUSQUACOOK L (3RD)	1918	T11 R11 WELS	G	397	S					S		2	AC	UNDEV	
MUSQUACOOK L (4TH)	1920	T10 R11 WELS	G	749	S	S	S			S		1B	AC	UNDEV	
MUSQUACOOK L (5TH)	1946	T10 R11 WELS	G	358		O	S			S		1B	AC	UNDEV	
MUSQUASH L (LITTLE)	1128	T37 MD BPP	C	26	m							3	AC	UNDEV	
MUSQUASH L (WEST)	1096	T06 R01 NBPP	C	1613	O		O	S		S		1A	AC	UNDEV	2
MUSQUASH P (FIRST)	0566	T01 R11 WELS	E	53						S		2	AC	UNDEV	
MUSQUASH P (SECOND)	0564	T01 R11 WELS	E	55						S		2	AC	UNDEV	
MUSQUASH P (THIRD)	0570	T01 R11 WELS	E	25								3	AC	UNDEV	
MYRICK P	4416	T10 SD	C	45			S					2	AC	DEV	
NAHMAKANTA L	0698	T01 R11 WELS	E	1024	O		O	O	O	S		1A	AC	UNDEV	2
NARRAGUAGUS L	4414	T16 MD	C	426	S		S	S		S		1B	INAC	DEV	
NARROW P	2976	T08 R14 WELS	E	151	S						O	1B	AC	UNDEV	
NESOURDNEHUNK DWTR	0600	T02 R10 WELS	F	300	O	O					S	1A	AC	UNDEV	
NICATOUS L	4766	T40 MD	F	5165	S	O	O	O		S		1A	AC	DEV	4

ALPHABETICAL LIST OF LAKES SHOWING
WILDLANDS LAKE ASSESSMENT FINDINGS

PRINCIPAL LAKE NAME	LAKE #	TOWN NAME	IF&W REG	SIZE (AC)	RESOURCE RATINGS							RESOURCE CLASS	LAND USE		MGNT CLASS
					FSH	WLD	SC	SH	BOT	CLT	PHY		ACCESS	DEV	
NOLLESEMIC L	2128	CEDAR LAKE TWP	F	660								3	AC	UNDEV	
NORTH P	0870	ELLIOTTSTVILLE TWP	E	58	S			+				2	INAC	UNDEV	
NORTH P	1768	T08 R03 WELS	G	16	m							3	INAC	DEV	
NORTH P	3284	GRAFTON TWP	D	15								3	INAC	UNDEV	
NORTH P	9781	T14 R09 WELS	G	15	O					S		1B	INAC	UNDEV	1
NORTHWEST P	3342	MASSACHUSETTS GORE	D	45	S							2	INAC	UNDEV	
NORTHWEST P (LITTLE)	3344	MASSACHUSETTS GORE	D	10	S							2	INAC	UNDEV	
NORWAY L	9526	PUKAKON TWP	F	92			S	S				2	AC	UNDEV	
NOTCH P	0786	BOWDOIN COL GR WEST	E	10	S							2	INAC	UNDEV	6
NOTCH P (BIG)	0328	MOOSEHEAD JUNCTION TWP	E	12	S							2	INAC	UNDEV	6
NOTCH P (LITTLE)	0326	MOOSEHEAD JUNCTION TWP	E	10	S							2	INAC	UNDEV	6
NUMBER NINE L	1756	T09 R03 WELS	G	120	S							2	AC	DEV	5
NUMBER THREE P	9635	T03 R01 NBPP	F	666	S		S	S	O			1B	AC	UNDEV	
OAK KNOLL B DEADWTR	2010	CEDAR LAKE TWP	F	15								3	INAC	UNDEV	
ONAWA L	0894	ELLIOTTSTVILLE TWP	E	1344	O	O	O	S		S		1A	AC	DEV	3
OQIM P (BIG)	5076	LOWELLTOWN TWP	E	97	S							2	INAC	UNDEV	
ORIE L	1094	T06 R01 NBPP	C	42	S							2	AC	UNDEV	
OTTER BOG	4408	T09 SD	C	13								3	AC	UNDEV	
OTTER L	1694	T03 R04 WELS	F	81								3	INAC	UNDEV	
OTTER P	0114	BOWTOWN TWP	D	77	S							2	AC	UNDEV	
OTTER P	1216	T24 MD BPP	C	12								3	INAC	UNDEV	
OTTER P	2860	SOPER MOUNTAIN TWP	G	40								3	AC	UNDEV	
OTTER P	2872	T08 R14 WELS	E	109								3	AC	UNDEV	
OTTER P	2924	T03 R13 WELS	E	25	S							2	INAC	UNDEV	
OTTER P	3074	T08 R05 WELS	G	64						S		2	AC	UNDEV	
OTTER P	3338	CHAIN OF PONDS TWP	D	30	S							2	AC	UNDEV	
OTTER P	3972	PARMACHENEE TWP	D	14		S						2	AC	UNDEV	
OTTER P	4110	SANDWICH ACAD GRANT	E	12	S							2	INAC	UNDEV	
OTTER P	7142	MAYFIELD TWP	D	25								3	AC	DEV	5
OTTER P	7344	CARRYING PLC TWN TWP	D	12								3	AC	DEV	
OTTER P (NORTH)	0116	BOWTOWN TWP	D	71	S							2	AC	UNDEV	
OXBROOK L (LOWER)	1106	T06 R01 NBPP	C	365	S		S	S				2	AC	DEV	
OXBROOK L (UPPER)	1104	T06 R01 NBPP	C	422	S		S	S				2	AC	UNDEV	
OXHEAD P (LOWER)	4768	T40 MD	F	20								3	AC	UNDEV	
OXHEAD P (MIDDLE)	4770	T40 MD	F	38	S							2	AC	UNDEV	
OXHEAD P (UPPER)	5808	T40 MD	F	87	S							2	AC	UNDEV	
PACKARD STREAM DWTR	9584	LAKE VIEW PLT	F	20								3	INAC	UNDEV	
PALIN P	0256	BRIGHTON PLT	D	10								3	AC	UNDEV	
PALMER P	0266	MAYFIELD TWP	D	40	S							2	AC	UNDEV	
PALMER P (LITTLE)	0268	MAYFIELD TWP	D	22								3	INAC	UNDEV	
PAPOOSE P	0338	MOOSEHEAD JUNCTION TWP	E	3								3	INAC	UNDEV	6
PAPOOSE P (LITTLE)	3268	ALBANY TWP	A	19	m		S					2	AC	DEV	5
PARKER P	5148	T03 R05 BKP WKR	D	80								3	AC	UNDEV	
PARLIN P	2544	PARLIN POND TWP	E	543	S		S	S	S			1B	AC	DEV	
PARMACHENEE L	3966	LYNCHTOWN TWP	D	912	S	S				S-	O	1B	AC	UNDEV	
PARTRIDGE P	2790	T08 R11 WELS	G	30								3	AC	UNDEV	

**ALPHABETICAL LIST OF LAKES SHOWING
WILDLANDS LAKE ASSESSMENT FINDINGS**

PRINCIPAL LAKE NAME	LAKE #	TOWN NAME	IF&W REG	SIZE (AC)	RESOURCE RATINGS							RESOURCE CLASS	LAND USE		MGNT CLASS
					FSH	WLD	SC	SH	BOT	CLT	PHY		ACCESS	DEV	
PARTRIDGE P (LOWER)	2788	T08 R11 WELS	G	12								3	AC	UNDEV	
PARTRIDGE P (UPPER)	2792	T08 R11 WELS	G	12								3	INAC	UNDEV	
PASSAMAGAMET L	0970	T01 R09 WELS	F	461			S	S	O			1B	INAC	UNDEV	1
PATRICK L	1380	MARION TWP	C	275	S							2	AC	UNDEV	
PATTE MILL P	6761	ALBANY TWP	A	26	m							3	AC	UNDEV	
PATTEN P	1330	GRAND LAKE STREAM PLT	C	96								3	INAC	UNDEV	
PEAKED MOUNTAIN P	1254	T19 MD BPP	C	227	S					O		1B	AC	UNDEV	
PEAKED MOUNTAIN P	2208	T04 R07 WELS	F	61	S		S	S				2	INAC	DEV	
PEAKED MOUNTAIN P	5774	T10 R11 WELS	G	13	S							2	AC	UNDEV	
PEARL P # 1	0416	BOWDOIN COL GR WEST	E	10								3	INAC	UNDEV	
PEEP L	9821	T30 MD BPP	C	32	S							2	AC	DEV	5
PELLETIER B L (1ST)	1564	T16 R09 WELS	G	25	S							2	AC	UNDEV	
PELLETIER B L (2ND)	1566	T16 R09 WELS	G	26	S							2	AC	UNDEV	
PELLETIER B L (3RD)	1560	T16 R09 WELS	G	83	O	+						1B	AC	UNDEV	
PELLETIER B L (4TH)	1562	T16 R09 WELS	G	49	O							1B	AC	UNDEV	
PELLETIER B L (5TH)	1504	T15 R09 WELS	G	27	S					+		2	INAC	UNDEV	
PELLETIER B L (6TH)	1502	T15 R09 WELS	G	32	S							2	AC	UNDEV	
PEMADUMCOOK CHAIN L*	0982	T01 R10 WELS	F	18300	S		O	S		O	S	1A	AC	DEV	3
PEMADUMCOOK L*	PPEM	T01 R09 WELS	F	7356	S		O	S		S	S	1A	AC	UNDEV	3
PENMAN P	0113	T26 ED BPP	C	29								3	AC	DEV	5
PENNINGTON P	1612	T15 R06 WELS	G	45	S		S					2	AC	UNDEV	
PENOBSCOT L	0339	DOLE BROOK TWP	E	1019	O		O	S		S	O	1A	AC	UNDEV	2
PENOBSCOT P	0568	T01 R12 WELS	E	279	S		S		O			1B	AC	UNDEV	
PENOBSCOT P (LITTLE)	0560	T01 R11 WELS	E	38						S		2	AC	UNDEV	
PEPPERPOT P	3298	ADAMSTOWN TWP	D	50	m	S						2	AC	UNDEV	
PERCH P	1522	T15 R09 WELS	G	17	S							2	AC	UNDEV	
PETE'S P	1482	T13 R10 WELS	G	20	S							2	INAC	UNDEV	
PICKEREL L	1166	T30 MD BPP	C	23	m							3	AC	UNDEV	
PICKEREL P	4587	T32 MD	F	11								3	AC	UNDEV	
PICKEREL P (LITTLE)	1080	BROOKTON TWP	F	27	S							2	AC	DEV	
PICKEREL P (LITTLE)	4780	T34 MD	C	13	m							3	INAC	UNDEV	
PICKETT MOUNTAIN P	3658	T06 R06 WELS	F	173	S		S					2	AC	UNDEV	
PIERCE P	0086	PIERCE POND TWP	D	1650	O	S	O	S+			+	1A	AC	UNDEV	2
PIKE BROOK P (EAST)	9819	T18 MD BPP	C	12	S							2	AC	UNDEV	
PIKE BROOK P (WEST)	9667	T18 MD BPP	C	32	S							2	AC	UNDEV	
PILLSBURY P	2786	T08 R11 WELS	G	301			S					2	AC	UNDEV	
PILLSBURY P (LITTLE)	2800	T08 R11 WELS	G	45	S							2	AC	UNDEV	
PINE P	2990	T07 R15 WELS	E	16								3	INAC	UNDEV	
PINE P (BIG)	2920	T03 R13 WELS	E	164	S							2	AC	UNDEV	
PINE P (LITTLE)	9716	T03 R13 WELS	E	25								3	INAC	UNDEV	
PINE STREAM FLOWAGE	2906	T04 R13 WELS	E	167		S			O			1B	AC	UNDEV	
PISTOL L (LOWER)	4756	T03 ND	F	979	S	S	S	S				1B	AC	UNDEV	
PISTOL L (MIDDLE)	4750	OQITON TWP	F	112	S							2	AC	UNDEV	
PISTOL L (SIDE)	4752	T03 ND	F	147	S							2	AC	UNDEV	
PISTOL L (UPPER)	4748	OQITON TWP	F	128	S							2	INAC	UNDEV	

* This lake has multiple management classes corresponding to sections of the lake. Refer to the official zoning map for designations.

**ALPHABETICAL LIST OF LAKES SHOWING
WILDLANDS LAKE ASSESSMENT FINDINGS**

PRINCIPAL LAKE NAME	LAKE #	TOWN NAME	IF&W REG	SIZE (AC)	RESOURCE RATINGS							RESOURCE CLASS	LAND USE		MGNT CLASS
					FSH	WLD	SC	SH	BOT	CLT	PHY		ACCESS	DEV	
PITMAN P	0598	T02 R10 WELS	F	20								3	INAC	UNDEV	6
PLEASANT & MUD LAKES	3670	T06 R06 WELS	F	498	S		O					1B	AC	UNDEV	
PLEASANT L	1100	T06 R01 NBPP	C	1574	O		O	S	O			1A	AC	UNDEV	2
PLEASANT L	1728	T04 R03 WELS	F	1832	O		S			S		1B	AC	UNDEV	
PLEASANT L (BIG)	2756	T09 R11 WELS	G	979	S	S	O	S		S		1A	AC	UNDEV	
PLEASANT P	0224	THE FORKS PLT	D	1120	S		+	+		S	S	2	AC	DEV	5
PLEASANT P	2160	ORNEVILLE TWP	F	92	S							2	AC	DEV	
PLEASANT P (BIG)	0512	TA R11 WELS	E	195	S							2	AC	UNDEV	
PLEASANT P (LITTLE)	0510	TA R11 WELS	E	30								3	AC	UNDEV	
PLEASANT P (LITTLE)	1943	T10 R11 WELS	G	91	O	S		+				1B	AC	UNDEV	
PLEASANT RIVER L	1210	DEVEREAUX TWP	C	949	S							2	AC	DEV	
PLUNKETT P	3056	SILVER RIDGE TWP	F	435	S							2	AC	UNDEV	
POCKWOCKAMUS DEADWTR	9688	T02 R09 WELS	F	275						S		2	INAC	DEV	
POCKWOCKAMUS P	0245	T02 R09 WELS	F	46			S	S			S	2	AC	UNDEV	
POCUMCUS L	1110	SAKOM TWP	C	2201	O	O				S		1A	AC	UNDEV	3
POLAND P*	2994	T07 R14 WELS	E	490	S	O	O	S			O	1A	AC	UNDEV	
POLAND P (UPPER)*	PPUP	T07 R14 WELS	E	245	S	O	O	S			O	1A	INAC	UNDEV	1
POLLY P	0692	T03 R11 WELS	E	15	m							3	INAC	UNDEV	6
POLLYWOG P	0576	T01 R11 WELS	E	147	S							2	AC	UNDEV	
POND IN THE RIVER	3328	TOWNSHIP C	D	512	O	S	S		O			1A	AC	DEV	4
POOLER P	4106	THE FORKS PLT	D	10								3	AC	UNDEV	
PORK BARREL L	1102	T06 R01 NBPP	C	33								3	INAC	UNDEV	
PORTAGE P (LOWER)	2760	T09 R11 WELS	G	35			S			S		2	AC	UNDEV	
PORTAGE P (UPPER)	2762	T09 R11 WELS	G	96	S					S		2	AC	UNDEV	
PORTER P	4760	T03 ND	F	58	S							2	INAC	UNDEV	6
POSSUM P	1310	T26 ED BPP	C	30	m							3	AC	DEV	
PRATT L	1972	T11 R09 WELS	G	96	S	S						2	AC	UNDEV	
PRENTISS P	0562	T01 R11 WELS	E	12	S							2	AC	UNDEV	
PRESCOTT P	0898	ELLIOTTSVILLE TWP	E	14	m							3	INAC	UNDEV	
PRESCOTT P	4058	MOXIE GORE	D	30		S						2	AC	UNDEV	
PRESLEY L	1870	T12 R17 WELS	G	202							P	3	AC	UNDEV	
PRESLEY L (LITTLE)	1876	T12 R17 WELS	G	32						S	P	2	INAC	UNDEV	
PRESQUE ISLE L	1758	T09 R03 WELS	G	38								3	AC	DEV	5
PRETTY P	1214	T24 MD BPP	C	27								3	AC	DEV	
PRETTY P	2802	T08 R11 WELS	G	45			S					2	INAC	UNDEV	
PRIESTLY L	1906	T10 R13 WELS	G	645	S		O			S	O	1A	AC	UNDEV	
PROCTOR P	3210	ALBANY TWP	A	45	m							3	AC	DEV	5
PRONG P	9791	BEAVER COVE	E	427	S	O	O	S				1A	AC	UNDEV	
PUDDING P	0932	BARNARD TWP	E	12								3	AC	DEV	
PUG (SILVER PUG) L	1308	T26 ED BPP	C	198	S							2	AC	DEV	
PUG L (HOSEA)	1306	T26 ED BPP	C	58	S							2	INAC	UNDEV	
PUG L (LOWER)	4694	LAKEVILLE	F	70	S							2	INAC	UNDEV	
PUG L (UPPER)	4696	LAKEVILLE	F	50	S							2	INAC	UNDEV	
PUGHOLE P	4786	T41 MD	F	70	S			+	O			1B	AC	UNDEV	
PUNCHBOWL P	0294	BLANCHARD TWP	E	40	S		O	S				1B	AC	UNDEV	

* This lake has multiple management classes corresponding to sections of the lake. Refer to the official zoning map for designations.

ALPHABETICAL LIST OF LAKES SHOWING
WILDLANDS LAKE ASSESSMENT FINDINGS

PRINCIPAL LAKE NAME	LAKE #	TOWN NAME	IF&W REG	SIZE (AC)	RESOURCE RATINGS							RESOURCE CLASS	LAND USE		MGNT CLASS
					FSH	WLD	SC	SH	BOT	CLT	PHY		ACCESS	DEV	
PUSHINEER P	1514	T15 R09 WELS	G	55	O							1B	AC	UNDEV	
QUAKISH L	2116	T03 INDIAN PURCHASE TWP	F	1000	S	O				S	S	1B	AC	UNDEV	
RABBIT P	0366	ELLIOTTSVILLE TWP	E	10								3	INAC	UNDEV	6
RABBIT P	0552	T01 R11 WELS	E	10	m							3	INAC	UNDEV	6
RAGGED L	2936	T02 R13 WELS	E	2712	O		O	S		S		1A	AC	UNDEV	4
RAGGED P	2746	T09 R10 WELS	G	11	S							2	AC	UNDEV	
RAGGED P (LOWER E)	0996	T04 INDIAN PURCHASE TWP	F	30			S				S	2	INAC	UNDEV	
RAGGED P (LOWER W)	0994	T04 INDIAN PURCHASE TWP	F	30			S					2	INAC	UNDEV	
RAGGED P (UPPER E)	0998	T04 INDIAN PURCHASE TWP	F	13							S	2	INAC	UNDEV	
RAGGED P (UPPER W)	0992	T04 INDIAN PURCHASE TWP	F	40			S					2	INAC	UNDEV	
RAINBOW DEADWATERS	9698	RAINBOW TWP	E	58	O							1B	INAC	UNDEV	1/6
RAINBOW L	0614	RAINBOW TWP	E	1664	O		O	O			S	1A	INAC	UNDEV	1
RAINBOW P	4436	T10 SD	C	17								3	INAC	UNDEV	6
RANCOURT P	2632	DENNISTOWN PLT	E	23	S	S						2	INAC	UNDEV	
RANGELEY L	3300	RANGELEY PLT	D	6000	O	S	O	S	S	O	O	1A	AC	DEV	4
RAYS MILL P	0808	T07 R09 NWP	E	10								3	AC	UNDEV	
REDINGTON P	2318	REDINGTON TWP	D	37	S		S					2	AC	DEV	
REED DEADWATER	2848	T08 R10 WELS	G	10	+	S						3	INAC	UNDEV	
REED P	3088	MACWAHOC PLT	F	19								3	AC	UNDEV	
REED P (BIG)	2842	T08 R10 WELS	G	90	O					O		1A	INAC	UNDEV	1
REED P (LITTLE)	2838	T08 R10 WELS	G	25	m+					+		3	INAC	UNDEV	6
RICHARDSON L*	3308	RICHARDSONTOWN TWP	D	7100	O	O	O	O		O	S	1A	AC	DEV	
RICHARDSON L (LOWER)*	RHLW	TOWNSHIP C	D	2900	O	S	S	O		S	S	1A	AC	DEV	3
RICHARDSON L (UPPER)*	RHUP	RICHARDSONTOWN TWP	D	4200	O	O	O	O		O		1A	AC	DEV	
RICHARDSON P (LO E)	3296	ADAMSTOWN TWP	D	54								3	AC	DEV	
RICHARDSON P (UP E)	3294	ADAMSTOWN TWP	D	85	S							2	AC	DEV	
RICHARDSON P (WEST)	3292	ADAMSTOWN TWP	D	423		S	O	S				1B	AC	DEV	
RIPOGENUS P	2910	T04 R12 WELS	E	76	m	S					S	2	INAC	UNDEV	6
RIVER L (LITTLE)	1118	T43 MD BPP	C	75	m+	S	+					2	INAC	UNDEV	
RIVER P	2092	T02 R09 WELS	F	125			S				S	2	AC	UNDEV	
ROACH P (FIRST)	0436	FRENCHTOWN TWP	E	3270	S		S	S	S	S		1B	AC	DEV	3
ROACH P (FOURTH)	0446	SHAWTOWN TWP	E	266	S		O	S				1B	INAC	UNDEV	1/6
ROACH P (SECOND)	0452	T01 R12 WELS	E	970	S		S				S	1B	AC	UNDEV	
ROACH P (SEVENTH)	0500	TA R11 WELS	E	33	S							2	INAC	UNDEV	6
ROACH P (SIXTH)	0480	SHAWTOWN TWP	E	48	S							2	INAC	UNDEV	6
ROACH P (THIRD)	0482	SHAWTOWN TWP	E	570	S		O	S				1B	AC	UNDEV	
ROARING BROOK P	0918	T07 R09 NWP	E	55	m							3	INAC	UNDEV	
ROBAR P	2014	T04 R08 WELS	F	12								3	INAC	UNDEV	
ROBAR P (BIG)	2296	T04 R08 WELS	F	7								3	INAC	UNDEV	6
ROBBINS BROOK P	9794	T12 R11 WELS	G	27	O							1B	INAC	DEV	
ROBERTS P	5164	T05 R20 WELS	E	19	m							3	AC	UNDEV	6
ROBINSON P	2436	T04 R17 WELS	E	34								3	INAC	UNDEV	
ROCK P	3340	CHAIN OF PONDS TWP	D	26	S							2	AC	UNDEV	
ROCK P	3542	SANDY RIVER PLT	D	7								3	INAC	UNDEV	
ROCK P	5108	HAYNESTOWN TWP	E	124	O		S+	S				1B	AC	UNDEV	

* This lake has multiple management classes corresponding to sections of the lake. Refer to the official zoning map for designations.

ALPHABETICAL LIST OF LAKES SHOWING
WILDLANDS LAKE ASSESSMENT FINDINGS

PRINCIPAL LAKE NAME	LAKE #	TOWN NAME	IF&W REG	SIZE (AC)	RESOURCE RATINGS							RESOURCE CLASS	LAND USE		MGNT CLASS
					FSH	WLD	SC	SH	BOT	CLT	PHY		ACCESS	DEV	
ROCKABEMA L	3636	MORO PLT	G	339	S		S	S				2	AC	DEV	3
ROCKY BOG	2008	CEDAR LAKE TWP	F	15								3	INAC	UNDEV	
ROCKY L	1348	BERRY TWP	C	1555	O	S					O	1A	AC	UNDEV	
ROCKY P	0676	T03 R11 WELS	E	16								3	INAC	UNDEV	
ROCKY P	1182	T25 MD BPP	C	32								3	AC	UNDEV	
ROCKY P	2018	T03 R08 WELS	F	16	S							2	INAC	UNDEV	
ROCKY P	4476	T22 MD	C	666	m							3	AC	UNDEV	3
ROCKY P (BIG)	0522	TA R11 WELS	E	115	S							2	INAC	UNDEV	
ROCKY P (LITTLE)	0524	TA R11 WELS	E	12	S							2	INAC	UNDEV	6
RODERIQUE P	0317	ROCKWOOD STRIP T02 R01	E	44	S							2	AC	UNDEV	
ROLAND P	0031	DALLAS PLT	D	26								3	INAC	UNDEV	
ROSS L	1888	T10 R15 WELS	G	2892	S			+		S	S	2	AC	UNDEV	
ROUND L	1240	T19 ED BPP	C	352	S	O						1B	AC	DEV	
ROUND MOUNTAIN P	1966	T11 R08 WELS	G	38	S					O		1B	AC	UNDEV	
ROUND MOUNTAIN P	5058	ALDER STREAM TWP	D	73	S+		S					2	AC	UNDEV	
ROUND P	0235	T03 R01 NBPP	F	10								3	AC	UNDEV	
ROUND P	0563	T10 SD	C	205								3	AC	UNDEV	
ROUND P	1470	T13 R12 WELS	G	697	O	O*				S		1A	AC	UNDEV	2
ROUND P	1594	T14 R08 WELS	G	90	S	S						2	AC	UNDEV	3
ROUND P	2670	APPLETON TWP	E	5								3	INAC	UNDEV	6
ROUND P	2914	LOBSTER TWP	E	93								3	AC	UNDEV	
ROUND P	3584	TOWNSHIP E	D	42	O							1B	INAC	DEV	5
ROUND P	4004	T07 R14 WELS	E	375	S		S	S				2	AC	UNDEV	
ROUND P	4076	SQUARETOWN TWP	D	60								3	AC	DEV	
ROUND P	4092	CHASE STREAM TWP	D	30	O							1B	AC	UNDEV	
ROUND P	4100	SAPLING TWP	E	40								3	INAC	UNDEV	
ROUND P	4158	T07 R09 WELS	G	30		+	+				+	3	INAC	UNDEV	
ROUND P	6755	ALBANY TWP	A	14	S							2	INAC	UNDEV	
ROUND P (LITTLE)	2874	EAGLE LAKE TWP	G	58	O	S					O	1A	INAC	UNDEV	1
ROUND P (LITTLE)	4382	T07 SD	C	13								3	INAC	UNDEV	
ROWE L	1964	T11 R08 WELS	G	252	S							2	AC	UNDEV	
ROWE P	0202	PLEASANT RIDGE PLT	D	205	S							2	AC	UNDEV	
ROWE P	4002	T07 R15 WELS	E	250	S		O	S			S	1B	AC	UNDEV	
RUM P	0780	BOWDOIN COL GR WEST	E	245	O							1B	AC	UNDEV	
RUMP P	3112	PARMACHENEE TWP	D	35	S					S-		2	AC	DEV	
RUSH P	3062	HERSEYTOWN TWP	F	243		O					S	1B	AC	UNDEV	
RUSH P	5130	KING & BARTLETT TWP	D	10								3	AC	UNDEV	
RUSSELL P	2424	RUSSELL POND TWP	E	152	S		S	S				2	AC	UNDEV	
RUSSELL P (LOWER)	2852	T09 R14 WELS	G	140								3	INAC	UNDEV	
RUSSELL P (MIDDLE)	2958	T09 R14 WELS	G	24								3	INAC	UNDEV	
RUSSELL P (UPPER)	2960	T09 R14 WELS	G	282	S							2	INAC	UNDEV	
RUSSELL P(1ST SO BR)	2978	T08 R14 WELS	E	40								3	INAC	UNDEV	
RUSSELL P(2ND SO BR)	2988	T08 R14 WELS	E	66								3	INAC	UNDEV	
SABAO L (LOWER)	4784	T35 MD	C	755	O					S		1B	AC	UNDEV	
SABAO L (UPPER)	4522	T41 MD	F	486	S		+	+	O	S	S	1B	AC	UNDEV	
SABBATH DAY P	3578	TOWNSHIP E	D	57	S							2	INAC	DEV	

ALPHABETICAL LIST OF LAKES SHOWING
WILDLANDS LAKE ASSESSMENT FINDINGS

PRINCIPAL LAKE NAME	LAKE #	TOWN NAME	IF&W REG	SIZE (AC)	RESOURCE RATINGS							RESOURCE CLASS	LAND USE		MGNT CLASS
					FSH	WLD	SC	SH	BOT	CLT	PHY		ACCESS	DEV	
SADDLE P	4240	T07 R09 WELS	F	64	S		S					2	AC	UNDEV	
SADDLEBACK L	3536	DALLAS PLT	D	358	S							2	AC	DEV	
SADDLEBACK P	3550	SANDY RIVER PLT	D	13	S							2	INAC	UNDEV	6
SADDLEROCK P	9662	TB R11 WELS	F	10							S	2	AC	UNDEV	
SAFFORD P	0006	LEXINGTON TWP	D	40					O			1B	AC	UNDEV	
SAG P	1484	T13 R10 WELS	G	10								3	INAC	UNDEV	
SAINT CROIX L	1774	ST CROIX TWP	G	416	S	S					S	2	AC	DEV	
SAINT FRANCIS L	2398	T08 R16 WELS	G	322							P	3	AC	UNDEV	
SAINT FROID L	1610	WINTERVILLE PLT	G	2400	S			+		S	S	2	AC	DEV	
SALMON P	1158	T30 MD BPP	C	11	S							2	AC	DEV	
SALMON P	2900	T04 R13 WELS	E	107								3	INAC	UNDEV	
SALMON P	4422	T10 SD	C	10	S			+				2	INAC	UNDEV	
SALMON STREAM L	3046	T01 R06 WELS	F	659				S			S	2	INAC	UNDEV	
SALMON STREAM L (LT)	3048	T01 R06 WELS	F	218								3	INAC	UNDEV	
SAM HILL L	1156	DAY BLOCK TWP	C	46								3	AC	UNDEV	
SAMPSON P	0812	T07 R09 NWP	E	30								3	AC	UNDEV	
SANDY RIVER P (MID)	3566	SANDY RIVER PLT	D	70	S							2	AC	DEV	5
SANDY RIVER P(LOWER)	3564	SANDY RIVER PLT	D	17								3	AC	DEV	5
SANDY RIVER P(UPPER)	3568	SANDY RIVER PLT	D	28								3	AC	DEV	5
SAPET P (LITTLE)	5078	LOWELLTOWN TWP	E	22								3	INAC	UNDEV	
SAPONAC P	4722	GRAND FALLS TWP	F	922	S		S	S		S	P-	1B	AC	DEV	3
SAWTELLE DEADWATER	2174	T06 R07 WELS	F	218	S	O	S					1B	AC	UNDEV	
SAWTELLE P	3008	T07 R08 WELS	F	174		O						1B	INAC	UNDEV	1
SAWTELLE P (LITTLE)	5778	T07 R08 WELS	F	10		O						1B	INAC	UNDEV	1
SCHOODIC L	0956	LAKE VIEW PLT	F	7168	S		S			S	S	1B	AC	DEV	3,5
SCHOODIC L	1230	T18 MD BPP	C	389	S				O			1B	AC	UNDEV	
SCOPAN L	1654	SCOPAN TWP	G	5120	S				S	S	P	2	AC	DEV	
SCOTT DEADWATER (LT)	4010	T06 R14 WELS	E	24								3	INAC	UNDEV	
SCOTT P	1762	T08 R03 WELS	G	12		S						2	INAC	UNDEV	
SCOTT P (LITTLE)	4030	T05 R14 WELS	E	47		S						2	AC	UNDEV	
SCRAGGLEY L	9649	T06 R01 NBPP	C	2758	S		S	S		S		1B	AC	UNDEV	
SCRAGGLY L	4264	T07 R08 WELS	F	842	O		O	O	O	S	O	1A	AC	UNDEV	2
SCRIBNER BOG	4072	SQUARETOWN TWP	D	15		S						2	AC	UNDEV	
SCUTAZE STREAM DWTR	9586	LAKE VIEW PLT	F	22	m							3	AC	UNDEV	
SEARS P	9766	DOLE BROOK TWP	E	12								3	AC	UNDEV	
SEBOEIS DEADWATER	2172	T06 R07 WELS	F	60								3	INAC	UNDEV	
SEBOEIS L	0954	T04 R09 NWP	F	4201	S	S	O	S		S	S	1A	AC	UNDEV	
SEBOOMOOK L	4048	PLYMOUTH TWP	E	6448	S	O	S	S	S	S	O	1A	AC	UNDEV	
SECOND L	1134	T37 MD BPP	C	102	S							2	AC	DEV	
SECOND L	1268	BERRY TWP	C	332	S							2	AC	UNDEV	
SECOND L	1374	MARION TWP	C	1650	S	O					O	1A	AC	UNDEV	
SECRET P	0907	ELLIOTTSVILLE TWP	E	12	S							2	INAC	UNDEV	6
SECRET P	3358	SEVEN PONDS TWP	D	10	S							2	INAC	UNDEV	
SELMORE P	4738	OQITON TWP	F	22	S							2	AC	UNDEV	
SEWALL DEADWATER P	2748	T09 R10 WELS	G	14	+	S	+					3	AC	UNDEV	
SHACK P	2912	LOBSTER TWP	E	69	m							3	AC	UNDEV	

ALPHABETICAL LIST OF LAKES SHOWING
WILDLANDS LAKE ASSESSMENT FINDINGS

PRINCIPAL LAKE NAME	LAKE #	TOWN NAME	IF&W REG	SIZE (AC)	RESOURCE RATINGS							RESOURCE CLASS	LAND USE		MGNT CLASS
					FSH	WLD	SC	SH	BOT	CLT	PHY		ACCESS	DEV	
SHAD P	2120	T03 INDIAN PURCHASE TWP	F	112								3	AC	UNDEV	
SHADOW P	0331	MOOSEHEAD JUNCTION TWP	E	17	S						S	2	AC	UNDEV	
SHALLOW L	2876	T07 R14 WELS	E	1110	m+	O						1B	AC	UNDEV	
SHALLOW L (LITTLE)	2868	T07 R14 WELS	E	308	m					S	P	2	INAC	UNDEV	
SHALLOW P	5052	JIM POND TWP	D	52		S						2	AC	UNDEV	
SHAW L	7407	T06 R01 NBPP	C	211	S		S					2	INAC	UNDEV	
SHAW P	5152	T03 R04 BKP WKR	D	45								3	AC	DEV	
SHAW P (LOWER)	5154	T03 R04 BKP WKR	D	64		S						2	AC	UNDEV	
SHILLALAH P	4440	T10 SD	C	21	m							3	INAC	UNDEV	
SHIN P (LOWER)	2198	T05 R07 WELS	F	638	S		S			S		2	AC	DEV	5
SHIN P (UPPER)	2202	MOUNT CHASE	F	544	O		S			S		1B	AC	DEV	
SHINY L	7433	MARION TWP	C	32	m							3	INAC	UNDEV	
SHIRLEY BOG (EAST)	9600	MOOSEHEAD JUNCTION TWP	E	70							S	2	AC	UNDEV	
SHIRLEY BOG (WEST)	0350	MOOSEHEAD JUNCTION TWP	E	275	S							2	AC	UNDEV	
SILVER L	0922	KATAHDIN IRN WKS TWP	F	305	S		S	S			S	1B	AC	DEV	3
SILVER L	1656	T15 R05 WELS	G	13	S							2	AC	UNDEV	
SIMON P	1324	CODYVILLE PLT	C	14								3	INAC	UNDEV	
SIMSQUISH L	1316	LAMBERT LAKE TWP	C	115								3	INAC	UNDEV	
SING SING P	0558	T01 R11 WELS	E	50	S							2	INAC	UNDEV	
SKITACOOK L	1730	T04 R03 WELS	F	435								3	AC	UNDEV	
SLAUGHTER P	0690	T03 R11 WELS	E	66	O	+	O	S+		S	+	1B	INAC	UNDEV	1/6
SMITH (WEEKS) P	0254	BRIGHTON PLT	D	160	S							2	AC	UNDEV	
SMITH BROOK P	1770	DUDLEY TWP	G	32								3	INAC	UNDEV	
SMITH BROOK P	4184	T09 R10 WELS	G	12								3	INAC	UNDEV	
SMITH P	0896	ELLIOTTSVILLE TWP	E	10	S							2	INAC	UNDEV	
SMITH P	2012	T03 INDIAN PURCHASE TWP	F	208	S							2	AC	DEV	5
SMITH P	2546	PARLIN POND TWP	E	16	S							2	AC	UNDEV	
SMITH P	2638	FORSYTH TWP	E	15	m						S	2	INAC	UNDEV	
SMITH P	3078	T08 R05 WELS	G	32								3	INAC	UNDEV	
SMITH P (LITTLE)	2112	T01 R08 WELS	F	24								3	INAC	UNDEV	
SNAKE P	2548	JOHNSON MOUNTAIN TWP	E	8								3	INAC	UNDEV	6
SNAKE P	2702	T07 R11 WELS	E	275	S		S	S				2	INAC	UNDEV	
SNOW MOUNTAIN P	5060	ALDER STREAM TWP	D	12	S							2	INAC	DEV	
SNOWSHOE L	3028	T07 R07 WELS	F	638	S		O					1B	AC	UNDEV	
SNOWSHOE P	2804	T08 R11 WELS	G	40								3	INAC	UNDEV	
SOCATEAN P #1	4044	PLYMOUTH TWP	E	42	m							3	INAC	UNDEV	6
SOCATEAN P #2	4046	PLYMOUTH TWP	E	14	m							3	INAC	UNDEV	6
SOLDIER P	2314	SOLDIERTOWN T02 R07 WELS	F	42							S	2	INAC	UNDEV	
SOLDIER P	9783	WALLAGRASS	G	96	S							2	AC	DEV	5
SOLDIER P (LITTLE)	2308	SOLDIERTOWN T02 R07 WELS	F	20			S				S	2	INAC	UNDEV	
SONGO P	3262	ALBANY TWP	A	224	S				S	S		2	AC	DEV	5
SOPER BROOK DWTR	9674	T04 R11 WELS	E	20								3	AC	UNDEV	
SOPER LOGAN	2184	T06 R08 WELS	F	15								3	INAC	UNDEV	
SOPER P	2782	SOPER MOUNTAIN TWP	G	246	S							2	INAC	UNDEV	
SOPER P (UPPER)	2784	T08 R11 WELS	G	76	m							3	AC	UNDEV	
SOULE P	4166	T07 R08 WELS	F	19								3	INAC	UNDEV	

ALPHABETICAL LIST OF LAKES SHOWING
WILDLANDS LAKE ASSESSMENT FINDINGS

PRINCIPAL LAKE NAME	LAKE #	TOWN NAME	IF&W REG	SIZE (AC)	RESOURCE RATINGS							RESOURCE CLASS	LAND USE		MGNT CLASS
					FSH	WLD	SC	SH	BOT	CLT	PHY		ACCESS	DEV	
SOURDNAHUNK L	2730	T05 R11 WELS	E	1394	O		S	S				1B	AC	UNDEV	
SOURDNAHUNK L (LIT)	2728	T05 R11 WELS	E	102	O		S					1B	AC	UNDEV	
SOUTH (PINE TREE) P	3560	SANDY RIVER PLT	D	25	S							2	INAC	UNDEV	
SOUTH P	0824	T07 R09 NWP	E	18								3	AC	UNDEV	
SPAULDING P	9764	DOLE BROOK TWP	E	28	S							2	AC	UNDEV	
SPECK P	3288	GRAFTON TWP	D	9								3	INAC	UNDEV	6
SPECTACLE (SPEC) P	4450	OSBORN	C	1754	O							1B	AC	DEV	3
SPECTACLE L (LOWER)	1342	T19 ED BPP	C	26	m							3	INAC	UNDEV	
SPECTACLE L (UPPER)	1344	T19 ED BPP	C	26	m							3	AC	UNDEV	
SPECTACLE P	0282	BLANCHARD TWP	E	60	S							2	INAC	UNDEV	
SPECTACLE P	1580	T10 R08 WELS	G	122	S		S					2	AC	UNDEV	
SPECTACLE P	5122	KING & BARTLETT TWP	D	45	S	S						2	AC	UNDEV	
SPEDNIK L	0121	FOREST CITY TWP	F	17219	S	O	+			S+	+	1B	AC	UNDEV	
SPENCER L	5104	HOBBS TOWN TWP	E	1819	O		O	O	O	O		1A	AC	UNDEV	2
SPENCER P	0404	E MIDDLESEX CANAL GR	E	980	S	O*	O	S				1A	AC	UNDEV	2
SPENCER P	2450	COMSTOCK TWP	E	13								3	AC	UNDEV	
SPENCER P	3586	TOWNSHIP D	D	15	S							2	INAC	DEV	
SPENCER P	4754	T03 ND	F	38								3	AC	UNDEV	
SPENCER P (LITTLE)	2950	E MIDDLESEX CANAL GR	E	75		S			O			1B	AC	UNDEV	
SPIDER L	2758	T09 R11 WELS	G	890	S		O	S		S		1B	AC	UNDEV	
SPRING L	0170	T03 R04 BKP WKR	D	762	S	S				S		2	AC	DEV	
SPRING L	4758	T03 ND	F	435	S		S					2	AC	UNDEV	
SPRING P	2170	T06 R07 WELS	F	17								3	AC	UNDEV	
SPRING P	2832	T07 R10 WELS	G	15	O	+	+					2	INAC	UNDEV	6
SPRING RIVER L	4432	T10 SD	C	704	S		O	O				1A	AC	DEV	4
SPRUANCE P	0508	TA R11 WELS	E	15								3	INAC	UNDEV	
SPRUCE MOUNTAIN P	0466	TB R11 WELS	F	20	S		O			S		1B	INAC	UNDEV	1/6
SPRUCE P	0052	LEXINGTON TWP	D	49	S							2	AC	UNDEV	
SQUARE L	1672	T16 R05 WELS	G	8150	O			+		S	S+	1B	AC	DEV	
SQUIRREL P	1932	T11 R10 WELS	G	51								3	AC	UNDEV	
SQUIRTGUN FLOWAGE	7754	CHASE STREAM TWP	D	30								3	INAC	UNDEV	
ST JOHN L (LITTLE)	5168	T05 R20 WELS	E	90								3	AC	UNDEV	
ST JOHN P (FIFTH)	2414	T05 R17 WELS	E	1208	S					S		2	AC	UNDEV	
ST JOHN P (FOURTH)	2416	T05 R17 WELS	E	198	S							2	AC	UNDEV	
ST JOHN P (SECOND)	2432	T04 R17 WELS	E	105					+			3	INAC	UNDEV	6
ST JOHN P (THIRD)	2438	T04 R17 WELS	E	190	S					+		2	INAC	UNDEV	6
ST JOHN P (LOWER 1ST)	2428	T04 R17 WELS	E	29						+		3	INAC	UNDEV	6
ST JOHN P (UPPER 1ST)	2440	T04 R17 WELS	E	30						+		3	INAC	UNDEV	6
STERLING P	1574	T13 R07 WELS	G	38								3	AC	UNDEV	
STILES L	9659	T35 MD	C	51	m+							2	AC	UNDEV	
STINK P	1518	T15 R09 WELS	G	16	S							2	INAC	UNDEV	
STINK P & SNAKE BOG	2818	T07 R11 WELS	E	35								3	AC	UNDEV	
STONY BROOK P	0138	LOWER ENCHANTED TWP	D	15								3	AC	UNDEV	
STRATTON BROOK P	2317	WYMAN TWP	D	26		O	O					1A	AC	UNDEV	
STRATTON P	0618	RAINBOW TWP	E	15	S							2	INAC	UNDEV	6
STURTEVANT P	3104	MAGALLOWAY TWP	D	518	S		O	S				1B	AC	DEV	

ALPHABETICAL LIST OF LAKES SHOWING
WILDLANDS LAKE ASSESSMENT FINDINGS

PRINCIPAL LAKE NAME	LAKE #	TOWN NAME	IF&W REG	SIZE (AC)	RESOURCE RATINGS							RESOURCE CLASS	LAND USE		MGNT CLASS
					FSH	WLD	SC	SH	BOT	CLT	PHY		ACCESS	DEV	
SUCKER BROOK P	0924	KATAHDIN IRN WKS TWP	F	22								3	AC	UNDEV	
SUGAR BERTH P	2634	DENNISTOWN PLT	E	23	S	S						2	AC	UNDEV	
SUMMIT P	2434	T04 R17 WELS	E	52								3	AC	UNDEV	
SUNDAY P	3316	MAGALLOWAY TWP	D	30	S	S						2	INAC	UNDEV	6
SUNDAY P	7674	LYNCHTOWN TWP	D	30								3	AC	UNDEV	
SUNKEN & ROCKY LAKES	1368	MARION TWP	C	1126		S					O	1B	AC	UNDEV	
SUNKEN P	3267	ALBANY TWP	A	26								3	INAC	UNDEV	
SUNSET P	0892	ELLIOTTSVILLE TWP	E	10	m							3	INAC	UNDEV	
SWEENEY BOG	9776	T06 R17 WELS	E	40								3	AC	UNDEV	
SWIFT RIVER P	3576	TOWNSHIP E	D	10	S							2	INAC	UNDEV	
SWIFT RIVER P (LIT)	3572	TOWNSHIP E	D	15	O							1B	INAC	UNDEV	1/6
SYSLADOBSIS L (LO)	4730	SAKOM TWP	F	5376	S		S	S+	O	S		1A	AC	DEV	4
SYSLADOBSIS L (UP)	4688	LAKEVILLE	F	1142	S		S	S		S		1B	AC	DEV	
TACK P	2134	CEDAR LAKE TWP	F	10								3	INAC	UNDEV	
TARBOX P	4008	T06 R14 WELS	E	54								3	AC	UNDEV	
TEA P	2350	JIM POND TWP	D	90	S	S					O	1B	AC	DEV	
TELOS L & ROUND P	2710	T06 R11 WELS	E	2276	O	S	O	S		S		1A	AC	UNDEV	2
TEN THOUSAND ACRE P	4088	CHASE STREAM TWP	E	37	S							2	INAC	UNDEV	
TEN-FORTY P	9704	T02 R12 WELS	E	25	S							2	INAC	UNDEV	
TENMILE L	1058	FORKSTOWN TWP	F	45								3	INAC	UNDEV	
THANKSGIVING P	0288	BLANCHARD TWP	E	17	S							2	AC	DEV	
THE HORNS POND	8601	WYMAN TWP	D	10	S		O	O				1A	INAC	UNDEV	1
THIRD L	1132	T37 MD BPP	C	141	S							2	AC	UNDEV	
THIRD L	2704	T07 R10 WELS	F	474	S	+	S+	S			+	2	INAC	UNDEV	
THIRD L	8220	T28 MD	C	12								3	AC	DEV	
THISSELL P	2726	T05 R11 WELS	E	141	S		S					2	AC	UNDEV	
THOMPSON DEADWATER	1060	REED PLT	F	50								3	AC	UNDEV	
TILDEN P	4418	T10 SD	C	36	S		+					2	INAC	UNDEV	6
TIM P	2362	TIM POND TWP	D	320	O		O				+	1A	AC	UNDEV	2
TITCOMB P	4582	T32 MD	F	38	S							2	INAC	DEV	
TOBEY P	4078	JOHNSON MOUNTAIN TWP	E	20	O							1B	AC	UNDEV	
TOBEY P #1	2674	T05 R07 BKP WKR	E	35	m		O	S				1B	INAC	UNDEV	1/6
TOBEY P #2	2676	T05 R07 BKP WKR	E	32	m		S					2	INAC	UNDEV	6
TOBEY P #3	2678	T05 R07 BKP WKR	E	14	m		S	S				2	INAC	UNDEV	6
TOBY P	5102	HOBBS TOWN TWP	D	28	S							2	INAC	UNDEV	
TOGUE P	1530	T15 R09 WELS	G	388	O		S	+				1B	AC	UNDEV	
TOGUE P (LOWER)	2084	T02 R09 WELS	F	384	S		O	S			O	1A	AC	DEV	4
TOGUE P (UPPER)	2104	T02 R09 WELS	F	294	S		O	S			O	1A	AC	DEV	4
TOM YOUNG P	2952	E MIDDLESEX CANAL GR	E	25		S					S	2	AC	UNDEV	
TOMAH L	0135	FOREST TWP	F	56	S							2	INAC	UNDEV	
TOMAH L (LITTLE)	1320	CODYVILLE PLT	C	147			S					2	AC	UNDEV	
TOMHEGAN P	4038	W MIDDLESEX CANAL GR	E	356	S							2	AC	UNDEV	
TOTE ROAD P	0425	MORO PLT	G	25	S							2	AC	UNDEV	
TRICKEY P	2514	ALDER BROOK TWP	E	23	S							2	AC	UNDEV	
TROUT L	1098	KOSSUTH TWP	F	5								3	INAC	UNDEV	6
TROUT L	1250	DAY BLOCK TWP	C	21								3	AC	UNDEV	

ALPHABETICAL LIST OF LAKES SHOWING
WILDLANDS LAKE ASSESSMENT FINDINGS

PRINCIPAL LAKE NAME	LAKE #	TOWN NAME	IF&W REG	SIZE (AC)	RESOURCE RATINGS							RESOURCE CLASS	LAND USE		MGNT CLASS
					FSH	WLD	SC	SH	BOT	CLT	PHY		ACCESS	DEV	
TROUT P	0322	MOOSEHEAD JUNCTION TWP	E	33	S							2	AC	DEV	
TROUT P	0448	SHAWTOWN TWP	E	145	S							2	AC	UNDEV	
TROUT P	0792	BOWDOIN COL GR WEST	E	20	S							2	INAC	UNDEV	6
TROUT P	2316	SOLDIERTOWN T02 R07 WELS	F	19	S			S			S	2	AC	UNDEV	
TROUT P	3260	MASON TWP	A	17	m			S			O	1B	INAC	UNDEV	1/6
TROUT P	4724	GRAND FALLS TWP	F	15	S							2	INAC	UNDEV	
TROUT P	5082	LOWELLTOWN TWP	E	55	m+							3	INAC	UNDEV	6
TRUESDALE P	2452	COMSTOCK TWP	E	46								3	AC	UNDEV	
TRUEWORTHY P	4762	T03 ND	F	10								3	INAC	UNDEV	
TUMBLEDOWN DICK P	0548	T01 R11 WELS	E	24	m							3	INAC	UNDEV	6
TUMBLEDOWN P	3512	TOWNSHIP 6 N OF WELD	D	9								3	INAC	UNDEV	6
TUNK L	4434	T10 SD	C	2010	O	O	O	O		S	S	1A	AC	DEV	4
TURNER P	2402	T07 R16 WELS	E	104	S						P	2	AC	UNDEV	
TURNER P (BIG)	2642	FORSYTH TWP	E	111	O			+			S	1B	AC	UNDEV	
TURNER P (LITTLE)	2640	FORSYTH TWP	E	77	S							2	AC	UNDEV	
TURTLE P	0952	LAKE VIEW PLT	F	81	O							1B	INAC	UNDEV	1/6
TWIN (TROUT) PONDS	2102	T02 R09 WELS	F	60	O			O	S			1A	INAC	UNDEV	1/6
TWIN ISLAND P	5084	LOWELLTOWN TWP	E	84				+				3	AC	UNDEV	
TWIN L (NORTH)*	PNTW	T04 INDIAN PURCHASE TWP	F	3347	S			O	S		S	1A	AC	DEV	3
TWIN L (SOUTH)*	PSTW	T04 INDIAN PURCHASE TWP	F	3406	S			O	S		S	1B	AC	DEV	3,5
TWIN P	1908	T12 R12 WELS	G	15								3	INAC	UNDEV	
TWIN P #1	2210	T04 R07 WELS	F	11								3	INAC	UNDEV	
TWO MILE P	9765	T16 R13 WELS	G	12	m							3	INAC	UNDEV	6
UGH L	1884	T12 R14 WELS	G	79	S							2	AC	UNDEV	
UMBAGOG L	3102	MAGALLOWAY TWP	D	7850	S	O		+	+		S+	1B	AC	UNDEV	
UMBAZOOKSUS L	2890	T06 R13 WELS	E	1590	O	S					S+	1B	AC	UNDEV	
UMCOLCUS L	3080	T07 R05 WELS	G	630	S	S						2	AC	UNDEV	
UMSASKIS L	1896	T11 R13 WELS	G	1222	O	O*					S	1A	AC	UNDEV	2
UNKNOWN L (LOWER)	4740	OQITON TWP	F	179	S							2	AC	DEV	
UNKNOWN L (MIDDLE)	4742	OQITON TWP	F	90	S							2	AC	UNDEV	
UNKNOWN L (UPPER)	4744	OQITON TWP	F	58								3	INAC	UNDEV	
UNKNOWN P	5072	GORHAM GORE	E	12								3	INAC	UNDEV	
UNNAMED P	2879	T03 R04 WELS	F	11								3	AC	UNDEV	
UNNAMED P	6946	T03 R05 BKP WKR	D	15		S						2	AC	UNDEV	
UNNAMED P	6948	T03 R05 BKP WKR	D	12		S						2	AC	UNDEV	
UNNAMED P	6950	T03 R05 BKP WKR	D	20		S						2	AC	UNDEV	
UNNAMED P	7016	KING & BARTLETT TWP	D	12								3	AC	UNDEV	
UNNAMED P	7020	T12 R16 WELS	G	12								3	INAC	UNDEV	
UNNAMED P	7023	T11 R17 WELS	G	12								3	INAC	UNDEV	
UNNAMED P	7062	THE FORKS PLT	D	10								3	AC	DEV	5
UNNAMED P	7066	THE FORKS PLT	D	30								3	INAC	UNDEV	
UNNAMED P	7073	T06 R15 WELS	E	8								3	INAC	UNDEV	6
UNNAMED P	7115	COMSTOCK TWP	E	15	m							3	INAC	UNDEV	6
UNNAMED P	7134	MAYFIELD TWP	D	12								3	AC	UNDEV	
UNNAMED P	7314	HIGHLAND PLT	D	12								3	AC	DEV	

* This lake has multiple management classes corresponding to sections of the lake. Refer to the official zoning map for designations.

ALPHABETICAL LIST OF LAKES SHOWING
WILDLANDS LAKE ASSESSMENT FINDINGS

PRINCIPAL LAKE NAME	LAKE #	TOWN NAME	IF&W REG	SIZE (AC)	RESOURCE RATINGS							RESOURCE CLASS	LAND USE		MGNT CLASS
					FSH	WLD	SC	SH	BOT	CLT	PHY		ACCESS	DEV	
UNNAMED P	7319	T37 MD BPP	C	12	m							3	AC	UNDEV	
UNNAMED P	7320	LEXINGTON TWP	D	10			S					2	INAC	UNDEV	
UNNAMED P	7335	T30 MD BPP	C	10	m							3	AC	UNDEV	
UNNAMED P	7379	T19 MD BPP	C	10								3	INAC	UNDEV	
UNNAMED P	7389	T18 MD BPP	C	11								3	INAC	UNDEV	
UNNAMED P	7390	SQUARETOWN TWP	D	15								3	AC	UNDEV	
UNNAMED P	7397	FOREST TWP	F	40								3	AC	UNDEV	
UNNAMED P	7403	T08 R04 NBPP	F	30								3	INAC	UNDEV	
UNNAMED P	7421	FOWLER TWP	C	32								3	AC	UNDEV	
UNNAMED P	7462	WEST FORKS PLT	D	15								3	INAC	UNDEV	
UNNAMED P	7485	CODYVILLE PLT	C	10								3	INAC	UNDEV	
UNNAMED P	7498	LOWER ENCHANTED TWP	D	10								3	INAC	UNDEV	
UNNAMED P	7594	C SURPLUS	D	35								3	INAC	UNDEV	
UNNAMED P	7596	TOWNSHIP C	D	20								3	AC	UNDEV	
UNNAMED P	7700	MAGALLOWAY TWP	D	10								3	INAC	UNDEV	
UNNAMED P	7752	CHASE STREAM TWP	D	11								3	AC	UNDEV	
UNNAMED P	7776	APPLETON TWP	E	10								3	INAC	UNDEV	
UNNAMED P	7818	CHASE STREAM TWP	D	10								3	AC	DEV	
UNNAMED P	7862	SEBOOMOOK TWP	E	22								3	INAC	UNDEV	
UNNAMED P	7864	SEBOOMOOK TWP	E	10								3	INAC	UNDEV	
UNNAMED P	7996	T07 R15 WELS	E	10								3	AC	UNDEV	
UNNAMED P	8038	T01 R09 WELS	F	10								3	INAC	UNDEV	
UNNAMED P	8062	T01 R10 WELS	F	10								3	INAC	UNDEV	
UNNAMED P	8120	T02 R09 WELS	F	20								3	AC	UNDEV	
UNNAMED P	8180	T02 R09 WELS	F	10								3	INAC	UNDEV	
UNNAMED P	8251	T41 MD	F	30								3	AC	UNDEV	
UNNAMED P	8289	T28 MD	C	10	m							3	AC	UNDEV	
UNNAMED P	8308	T04 R12 WELS	E	10								3	INAC	UNDEV	
UNNAMED P	8312	T04 R15 WELS	E	10								3	AC	UNDEV	
UNNAMED P	8314	T05 R11 WELS	E	10								3	AC	UNDEV	
UNNAMED P	8343	T10 SD	C	13								3	INAC	UNDEV	
UNNAMED P	8356	DOLE BROOK TWP	E	10								3	INAC	UNDEV	
UNNAMED P	8359	FLETCHER'S LANDING TWP	C	10								3	INAC	UNDEV	
UNNAMED P	8363	FLETCHER'S LANDING TWP	C	13								3	AC	UNDEV	
UNNAMED P	8369	T07 SD	C	37								3	AC	UNDEV	
UNNAMED P	8381	T03 ND	F	10								3	AC	UNDEV	
UNNAMED P	8385	T03 ND	F	19								3	AC	UNDEV	
UNNAMED P	8416	COMSTOCK TWP	E	20	m							3	INAC	UNDEV	6
UNNAMED P	8620	T04 R17 WELS	E	10								3	INAC	UNDEV	
UNNAMED P	8650	T05 R17 WELS	E	10								3	INAC	UNDEV	
UNNAMED P	8735	SALEM TWP	D	40								3	AC	DEV	5
UNNAMED P	8737	RANGELEY PLT	D	10								3	AC	UNDEV	
UNNAMED P	8807	FREEMAN TWP	D	10								3	INAC	UNDEV	
UNNAMED P	8874	BRADSTREET TWP	E	10								3	INAC	UNDEV	
UNNAMED P	8886	BRADSTREET TWP	E	15								3	INAC	UNDEV	
UNNAMED P	8888	BRADSTREET TWP	E	10								3	INAC	UNDEV	

**ALPHABETICAL LIST OF LAKES SHOWING
WILDLANDS LAKE ASSESSMENT FINDINGS**

PRINCIPAL LAKE NAME	LAKE #	TOWN NAME	IF&W REG	SIZE (AC)	RESOURCE RATINGS							RESOURCE CLASS	LAND USE		MGNT CLASS
					FSH	WLD	SC	SH	BOT	CLT	PHY		ACCESS	DEV	
UNNAMED P	8890	SOLDIERTOWN T02 R03 NBKP	E	10								3	INAC	UNDEV	
UNNAMED P	8918	FORSYTH TWP	E	10								3	INAC	UNDEV	
UNNAMED P	8934	ATTEAN TWP	E	5								3	INAC	UNDEV	6
UNNAMED P	8942	HOLEB TWP	E	2								3	INAC	UNDEV	6
UNNAMED P	8958	MISERY TWP	E	10								3	INAC	UNDEV	
UNNAMED P	8976	T05 R07 BKP WKR	E	10								3	INAC	UNDEV	
UNNAMED P	8980	T05 R07 BKP WKR	E	10	m							3	INAC	UNDEV	6
UNNAMED P	9005	T05 R08 WELS	F	10								3	AC	UNDEV	
UNNAMED P	9007	T05 R08 WELS	F	18								3	INAC	UNDEV	
UNNAMED P	9013	T05 R07 WELS	F	10								3	INAC	UNDEV	
UNNAMED P	9017	T05 R07 WELS	F	10								3	AC	UNDEV	
UNNAMED P	9019	T05 R07 WELS	F	13								3	INAC	UNDEV	
UNNAMED P	9039	T04 R07 WELS	F	10								3	AC	UNDEV	
UNNAMED P	9061	T04 R08 WELS	F	12								3	INAC	UNDEV	
UNNAMED P	9067	T04 R08 WELS	F	10								3	INAC	UNDEV	
UNNAMED P	9069	T04 R08 WELS	F	10								3	INAC	UNDEV	
UNNAMED P	9071	T04 R08 WELS	F	10								3	INAC	UNDEV	
UNNAMED P	9081	T03 R08 WELS	F	25								3	INAC	UNDEV	
UNNAMED P	9085	T03 R08 WELS	F	10								3	INAC	UNDEV	
UNNAMED P	9097	PRENTISS TWP T07 R03 NBPP	F	10								3	INAC	UNDEV	
UNNAMED P	9099	PRENTISS TWP T07 R03 NBPP	F	20								3	INAC	UNDEV	
UNNAMED P	9102	KATAHDIN IRN WKS TWP	F	10								3	AC	UNDEV	
UNNAMED P	9107	KINGMAN TWP	F	10								3	INAC	UNDEV	
UNNAMED P	9109	DREW PLT	F	20								3	INAC	UNDEV	
UNNAMED P	9111	T03 R04 WELS	F	13								3	AC	UNDEV	
UNNAMED P	9113	T03 R04 WELS	F	11								3	INAC	UNDEV	
UNNAMED P	9130	TB R10 WELS	F	10								3	INAC	UNDEV	
UNNAMED P	9137	TD R02 WELS	G	10		S						2	INAC	UNDEV	
UNNAMED P	9150	TA R11 WELS	E	10								3	AC	UNDEV	
UNNAMED P	9201	BIG TWENTY TWP	G	10								3	AC	UNDEV	
UNNAMED P	9207	T18 R12 WELS	G	13								3	INAC	UNDEV	
UNNAMED P	9220	T02 R08 WELS	F	15								3	INAC	UNDEV	
UNNAMED P	9229	T14 R15 WELS	G	18								3	INAC	UNDEV	
UNNAMED P	9232	T08 R15 WELS	E	10								3	INAC	UNDEV	
UNNAMED P	9245	T13 R15 WELS	G	51								3	INAC	UNDEV	
UNNAMED P	9263	T16 R09 WELS	G	10								3	INAC	UNDEV	
UNNAMED P	9276	GRINDSTONE TWP	F	10								3	INAC	UNDEV	
UNNAMED P	9289	T16 R06 WELS	G	16								3	INAC	UNDEV	
UNNAMED P	9384	E MIDDLESEX CANAL GR	E	10								3	INAC	UNDEV	
UNNAMED P	9434	T15 R12 WELS	G	10								3	INAC	UNDEV	
UNNAMED P	9486	T09 R11 WELS	G	10								3	INAC	UNDEV	
UNNAMED P	9518	T10 R11 WELS	G	15								3	AC	UNDEV	
UNNAMED P	9570	T04 R09 NWP	F	15								3	AC	UNDEV	
UNNAMED P	9588	KINGSBURY PLT	E	15								3	AC	UNDEV	
UNNAMED P	9608	SPENCER BAY TWP	E	20								3	AC	UNDEV	
UNNAMED P	9626	T03 INDIAN PURCHASE TWP	F	25								3	INAC	UNDEV	

ALPHABETICAL LIST OF LAKES SHOWING
WILDLANDS LAKE ASSESSMENT FINDINGS

PRINCIPAL LAKE NAME	LAKE #	TOWN NAME	IF&W REG	SIZE (AC)	RESOURCE RATINGS							RESOURCE CLASS	LAND USE		MGNT CLASS
					FSH	WLD	SC	SH	BOT	CLT	PHY		ACCESS	DEV	
UNNAMED P	9628	T03 INDIAN PURCHASE TWP	F	20								3	INAC	UNDEV	
UNNAMED P	9668	T05 R07 BKP WKR	E	12								3	AC	UNDEV	
UNNAMED P	9670	T05 R07 BKP WKR	E	15								3	INAC	UNDEV	
UNNAMED P	9672	SEBOOMOOK TWP	E	20								3	INAC	UNDEV	
UNNAMED P	9676	TA R11 WELS	E	15								3	INAC	UNDEV	
UNNAMED P	9678	T01 R11 WELS	E	25								3	AC	UNDEV	
UNNAMED P	9680	T01 R11 WELS	E	17								3	AC	UNDEV	
UNNAMED P	9684	T01 R12 WELS	E	13								3	INAC	UNDEV	
UNNAMED P	9692	T02 R09 WELS	F	12								3	INAC	UNDEV	
UNNAMED P	9702	T02 R12 WELS	E	31								3	AC	UNDEV	
UNNAMED P	9712	T03 R13 WELS	E	11								3	INAC	UNDEV	
UNNAMED P	9714	T03 R13 WELS	E	10								3	AC	UNDEV	
UNNAMED P	9718	LOBSTER TWP	E	15								3	AC	UNDEV	
UNNAMED P	9720	T04 R12 WELS	E	20		S						2	INAC	UNDEV	
UNNAMED P	9722	T04 R14 WELS	E	15								3	INAC	UNDEV	
UNNAMED P	9726	T06 R13 WELS	E	20								3	AC	UNDEV	
UNNAMED P	9738	DENNISTOWN PLT	E	20								3	INAC	UNDEV	
UNNAMED P	9740	DENNISTOWN PLT	E	20								3	AC	DEV	
UNNAMED P	9742	DENNISTOWN PLT	E	12								3	INAC	UNDEV	
UNNAMED P	9746	ATTEAN TWP	E	12	m							3	INAC	UNDEV	6
UNNAMED P	9748	SEBOEIS PLT	F	19								3	INAC	UNDEV	
UNNAMED P	9754	ALDER BROOK TWP	E	30								3	INAC	UNDEV	
UNNAMED P	9758	PRENTISS TWP T04 R04 NBKP	E	11								3	INAC	UNDEV	
UNNAMED P	9762	DOLE BROOK TWP	E	12								3	INAC	UNDEV	
UNNAMED P	9770	ELM STREAM TWP	E	30								3	INAC	UNDEV	
UNNAMED P	9772	ELM STREAM TWP	E	25								3	INAC	UNDEV	
UNNAMED P	9774	RUSSELL POND TWP	E	12								3	INAC	UNDEV	
UNNAMED P	9778	T08 R19 WELS	G	15								3	INAC	UNDEV	
UNNAMED P	9780	T07 R11 WELS	E	12								3	AC	UNDEV	
UNNAMED P	9784	T07 R09 WELS	F	12								3	INAC	UNDEV	
UNNAMED P	9786	T07 R09 WELS	F	12								3	INAC	UNDEV	
UNNAMED P	9802	T08 R10 WELS	G	15								3	INAC	UNDEV	
UNNAMED P	9808	T09 R14 WELS	G	10								3	AC	UNDEV	
UNNAMED P	9813	SOPER MOUNTAIN TWP	G	10								3	INAC	UNDEV	
UNNAMED P	9890	T07 R08 WELS	F	30								3	AC	UNDEV	
UNNAMED P	9898	T07 R08 WELS	F	25								3	AC	UNDEV	
UNNAMED P	9908	T07 R07 WELS	F	10								3	INAC	UNDEV	
UNNAMED P	9920	T06 R08 WELS	F	11								3	INAC	UNDEV	
UNNAMED P	9950	T06 R07 WELS	F	12								3	AC	UNDEV	
UNNAMED P	9972	T05 R08 WELS	F	10								3	INAC	UNDEV	
UPPER P	1521	T15 R09 WELS	G	17	O							2	AC	UNDEV	
VILES P	5048	JIM POND TWP	D	11								3	INAC	UNDEV	
VINING L	1346	CATHANCE TWP	C	19	S							2	INAC	UNDEV	
WABASSUS L	1116	T43 MD BPP	C	953	S					S		2	AC	UNDEV	
WADLEIGH DEADWATER	9091	T01 R06 WELS	F	58						S		2	AC	UNDEV	
WADLEIGH P	0572	T01 R11 WELS	E	225	S		S	S		S		1B	AC	DEV	

ALPHABETICAL LIST OF LAKES SHOWING
WILDLANDS LAKE ASSESSMENT FINDINGS

PRINCIPAL LAKE NAME	LAKE #	TOWN NAME	IF&W REG	SIZE (AC)	RESOURCE RATINGS							RESOURCE CLASS	LAND USE		MGNT CLASS
					FSH	WLD	SC	SH	BOT	CLT	PHY		ACCESS	DEV	
WADLEIGH P	2011	T04 INDIAN PURCHASE TWP	F	97								3	AC	UNDEV	
WADLEIGH P	2972	T08 R15 WELS	E	157	O						O	1A	AC	UNDEV	
WADLEIGH P (LITTLE)	2974	T08 R15 WELS	E	15	m+			+			O	1B	INAC	UNDEV	1/6
WALLAGRASS (1ST&2ND)	1628	ST JOHN PLT	G	281	S			S				2	AC	DEV	
WALLAGRASS L (THIRD)	1552	ST JOHN PLT	G	45	S							2	AC	DEV	
WEBSTER L	2718	T06 R11 WELS	E	531	S	O						1B	AC	UNDEV	
WEBSTER P	4678	WEBSTER PLT	F	40	S						O	1B	AC	UNDEV	
WEEKS P	1968	T11 R08 WELS	G	13	S							2	AC	UNDEV	
WEIR P	4684	T03 R01 NBPP	F	45	S							2	AC	UNDEV	
WELMAN P (LOWER)	9760	PRENTISS TWP T04 R04 NBKP	E	20	S							2	INAC	UNDEV	
WELMAN P (UPPER)	2482	PRENTISS TWP T04 R04 NBKP	E	45	S							2	INAC	UNDEV	6
WEST L	0503	T03 ND	F	1344	O						S	1B	AC	DEV	
WEST L	1760	T09 R03 WELS	G	22	S							2	AC	UNDEV	
WHEELOCK L	1614	ST JOHN PLT	G	160	S						O	1B	AC	UNDEV	
WHETSTONE P	0296	KINGSBURY PLT	E	256	S						S	2	AC	DEV	5
WHIPPLE P	5094	T05 R07 BKP WKR	E	112				S				2	AC	UNDEV	
WHITE CAP P	3960	SEVEN PONDS TWP	D	15								3	INAC	UNDEV	
WHITE P	1462	T13 R15 WELS	G	17								3	INAC	UNDEV	
WHITE HORSE L	2162	T07 R07 WELS	F	218	S						O	1B	AC	UNDEV	
WILLIAMS P	0734	T04 R11 WELS	E	10	S							2	AC	UNDEV	
WILLIAMS P	4486	T28 MD	C	19								3	AC	DEV	
WILSON HILL P	4064	WEST FORKS PLT	D	18								3	INAC	UNDEV	
WILSON HILL P (LT)	0162	JOHNSON MOUNTAIN TWP	E	20								3	INAC	UNDEV	
WILSON P (LITTLE)	0900	ELLIOTTSVILLE TWP	E	30	m							3	AC	UNDEV	
WILSON P (UPPER)	0410	BOWDOIN COL GR WEST	E	940	O	S	O	S			S	1A	AC	DEV	4
WING P	2319	SKINNER TWP	E	10								3	INAC	UNDEV	6
WITHEE P	0188	MAYFIELD TWP	D	37								3	INAC	UNDEV	
WITHEY BOG	4028	T05 R15 WELS	E	15								3	INAC	UNDEV	
WOOD P (BIG)	2698	ATTEAN TWP	E	2150	S	S	S			S-	O	1A	AC	DEV	
WOOD P (LITTLE BIG)	2630	DENNISTOWN PLT	E	713	S	S	S	S			O	1A	AC	UNDEV	
WOODMAN P	0622	RAINBOW TWP	E	6								3	INAC	UNDEV	6
WOODMAN P	2812	T07 R12 WELS	E	51								3	AC	UNDEV	
WOUNDED DEER P	2484	PRENTISS TWP T04 R04 NBKP	E	12								3	INAC	UNDEV	6
WYMAN L	7122	PLEASANT RIDGE PLT	D	3146	S							2	AC	UNDEV	
WYMAN P	0248	BRIGHTON PLT	D	218	S							2	INAC	UNDEV	
WYTOPITLOCK L	1702	GLENWOOD PLT	F	1152	S	O						1B	AC	DEV	
YANKEETULADI P	9203	T19 R11 WELS	G	10							O	1B	AC	UNDEV	
YOKE PONDS	0504	TA R11 WELS	E	134	S							2	AC	DEV	
YORK P	3286	GRAFTON TWP	D	15								3	AC	UNDEV	

APPENDIX D LAKES AND RIVERS ON WHICH THE USE OF PERSONAL WATERCRAFT IS PROHIBITED

LAKE NAME	LAKE #	COUNTY	PRINCIPAL TOWN NAME	SIZE (ACRES)
ALLAGASH L	9787	PISCATAQUIS	T08 R14 WELS	4,260
ALLIGATOR L	4498	HANCOCK	T34 MD	1,159
ALLIGATOR P	0502	PISCATAQUIS	TA R11 WELS	47
ATTEAN P	2682	SOMERSET	ATTEAN TWP	2,745
AZISCOHOS P	3106	OXFORD	MAGALLOWAY TWP	12
BAKER P	0422	PISCATAQUIS	BOWDOIN COL GR WEST	10
BALD MOUNTAIN P	0314	SOMERSET	BALD MTN TWP T2R3	1,152
BAY P (WEST)	4396	HANCOCK	T07 SD	249
BEAN P	0656	PISCATAQUIS	T02 R12 WELS	16
BEAN P (LOWER)	0646	PISCATAQUIS	RAINBOW TWP	37
BEAN P (MIDDLE)	0648	PISCATAQUIS	RAINBOW TWP	10
BEAN P (UPPER)	0650	PISCATAQUIS	RAINBOW TWP	25
BEAR P	0636	PISCATAQUIS	RAINBOW TWP	30
BEAR P	4018	PISCATAQUIS	T06 R15 WELS	138
BEATTIE P	5066	FRANKLIN	BEATTIE TWP	27
BEAVER P	3310	OXFORD	MAGALLOWAY TWP	179
BEAVER P	0670	PISCATAQUIS	T03 R11 WELS	15
BEAVER P	0484	PISCATAQUIS	SHAWTOWN TWP	27
BEAVER P (BIG)	0610	PISCATAQUIS	RAINBOW TWP	45
BEAVER P (LITTLE)	9700	PISCATAQUIS	RAINBOW TWP	8
BEAVER P (LITTLE)	0612	PISCATAQUIS	T03 R11 WELS	10
BENJAMIN P	2684	SOMERSET	ATTEAN TWP	121
BENSON P (BIG)	0864	PISCATAQUIS	T07 R09 NWP	320
BIRCH RIDGE P #1	0514	PISCATAQUIS	TA R11 WELS	11
BLACK L	1506	AROOSTOOK	T15 R09 WELS	147
BLACK P (LITTLE NO)	1508	AROOSTOOK	T15 R09 WELS	6
BLACK P (LITTLE SO)	1510	AROOSTOOK	T15 R09 WELS	7
BLUFF P	0434	PISCATAQUIS	FRENCHTOWN TWP	10
BLUFFER P (UPPER)	2798	PISCATAQUIS	T08 R11 WELS	15
BOARDWAY P (BIG)	0494	PISCATAQUIS	TA R11 WELS	15
BOGUS MEADOW P	4380	HANCOCK	T07 SD	26
BOULDER P	2672	SOMERSET	T05 R07 BKP WKR	30
BOWLIN P (LITTLE)	2194	PENOBSCOT	T05 R07 WELS	34
BRACKETT P	0290	PISCATAQUIS	BLANCHARD PLT	10
BRANCH P (MIDDLE)	0912	PISCATAQUIS	EBEEMEE TWP	34
BRANCH L (SOUTH)	2144	PENOBSCOT	SEBOEIS PLT	2,035
BRAYLEY P	2706	PISCATAQUIS	T07 R10 WELS	6
BUCK P	0644	PISCATAQUIS	RAINBOW TWP	6
CAPE HORN P	2568	SOMERSET	PRENTISS TWP	22
CARIBOU P (BIG)	4142	PISCATAQUIS	T07 R10 WELS	64
CAUCOMGOMOC L	4012	PISCATAQUIS	T06 R14 WELS	5,081
CEDAR P	2654	SOMERSET	HOLEB TWP	5
CEDAR P	0474	PISCATAQUIS	TB R10 WELS	65
CHAIN OF PONDS	5064	FRANKLIN	CHAIN OF PONDS TWP	700
CHAIRBACK P (EAST)	0802	PISCATAQUIS	T07 R09 NWP	46
CHAIRBACK P (WEST)	0796	PISCATAQUIS	T07 R09 NWP	47
CHASE STREAM P	4093	SOMERSET	MISERY TWP	31
CHESUNCOOK L	CHCH	PISCATAQUIS	T03 R12 WELS	18,470
CHESUNCOOK P	0672	PISCATAQUIS	T03 R11 WELS	272
CHURCHILL L	2856	PISCATAQUIS	T09 R12 WELS	3,720

LAKE NAME	LAKE #	COUNTY	PRINCIPAL TOWN NAME	SIZE (ACRES)
CLAYTON P	2406	SOMERSET	T06 R17 WELS	75
CLEAR L	1938	PISCATAQUIS	T10 R11 WELS	614
CLEAR P	5074	FRANKLIN	LOWELLTOWN TWP	21
CLEARWATER P	2692	SOMERSET	ATTEAN TWP	34
CLEARWATER P	2476	SOMERSET	PRENTISS TWP	11
CLIFF L	2780	PISCATAQUIS	T09 R12 WELS	563
CLIFFORD L	1304	WASHINGTON	T27 ED BPP	954
CLIFFORD P	0624	PISCATAQUIS	RAINBOW TWP	17
CLISH P	5158	SOMERSET	T05 R20 WELS	21
CRANBERRY P (L, NOTCH)	0784	PISCATAQUIS	BOWDOIN COL GR WEST	7
CROSBY P	3330	FRANKLIN	COBURN GORE	150
CURRIER P (FIRST)	2768	PISCATAQUIS	T09 R11 WELS	20
CURRIER P (SECOND)	2774	PISCATAQUIS	T09 R11 WELS	28
DAISEY P	0594	PISCATAQUIS	T02 R10 WELS	11
DEBOULLIE L	1512	AROOSTOOK	T15 R09 WELS	262
DEBSCONEAG	2076	PISCATAQUIS	T02 R10 WELS	500
DEBSCONEAG L (1 ST)	2060	PISCATAQUIS	T02 R10 WELS	320
DEBSCONEAG L (3 RD)	0584	PISCATAQUIS	T01 R10 WELS	1,011
DEBSCONEAG P (6 TH)	0580	PISCATAQUIS	T01 R11 WELS	31
DINGLEY P (LITTLE)	2462	SOMERSET	T04 R05 NBKP	17
DINGLEY P (UPPER)	2464	SOMERSET	T04 R05 NBKP	20
DIPPER P	4042	SOMERSET	PITTSTON ACAD GRANT	13
DIXON P	9911	SOMERSET	PIERCE POND TWP	17
DONNELL P	4412	HANCOCK	T09 SD	1,120
DOUGHNUT P	0616	PISCATAQUIS	RAINBOW TWP	12
DUBOIS P	2478	SOMERSET	PRENTISS TWP	18
EAGLE L (BIG)	2858	PISCATAQUIS	EAGLE LAKE TWP	8,288
EDDY P	3546	FRANKLIN	SANDY RIVER PLT	9
ENCHANTED P	0150	SOMERSET	UPPER ENCHANTED TWP	330
ENCHANTED P (LITTLE)	0148	SOMERSET	UPPER ENCHANTED TWP	35
FLAGSTAFF L	0038	SOMERSET	DEAD RIVER TWP	20,300
FOGG P	0426	PISCATAQUIS	BOWDOIN COL GR WEST	23
FOLEY P (LITTLE)	2492	SOMERSET	COMSTOCK TWP	35
FOWLER P	0686	PISCATAQUIS	T03 R11 WELS	19
FROST P (LITTLE)	0668	PISCATAQUIS	T03 R12 WELS	35
GARNDER L	1528	AROOSTOOK	T15 R09 WELS	288
GAUNTLET P	0472	PISCATAQUIS	TB R10 WELS	11
GORDON P	0146	SOMERSET	UPPER ENCHANTED TWP	28
GOULD P	0620	PISCATAQUIS	RAINBOW TWP	12
GREAT WORKS P	1386	WASHINGTON	EDMUNDS TWP	50
GREEN MTN P	3666	PENOBSCOT	T06 R06 WELS	10
HAFEY P	1498	AROOSTOOK	T18 R11 WELS	23
HALE P	2508	SOMERSET	ALDER BROOK TWP	40
HALL P	5092	SOMERSET	T05 R07 BKP WKR	42
HALL P	2566	SOMERSET	PRENTISS TWP	19
HARRINGTON P	0702	PISCATAQUIS	T03 R11 WELS	40
HATHORN P	4242	PENOBSCOT	T04 R08 WELS	15
HATHORN P (LITTLE)	2298	PENOBSCOT	T04 R08 WELS	8
HEDGEHOG P	0556	PISCATAQUIS	T01 R11 WELS	5
HELEN P	0094	SOMERSET	PIERCE POND TWP	15
HIGH P	0092	SOMERSET	PIERCE POND TWP	7
HOBART BOG	7451	WASHINGTON	EDMUNDS TWP	30
HOLBROOK P	0632	PISCATAQUIS	RAINBOW TWP	224
HORSERACE PONDS	0626	PISCATAQUIS	RAINBOW TWP	50
HORSESHOE P	2686	SOMERSET	ATTEAN TWP	50
HORSESHOE P	9277	AROOSTOOK	T16 R09 WELS	15

LAKE NAME	LAKE #	COUNTY	PRINCIPAL TOWN NAME	SIZE (ACRES)
HOUSTON P (LITTLE)	0920	PISCATAQUIS	KATAHDIN IRON WORKS TWP	27
HUDSON P (UPPER)	1928	AROOSTOOK	T11 R10 WELS	32
HURD P (LITTLE)	0596	PISCATAQUIS	T02 R10 WELS	60
IRELAND P	4168	PENOBSCOT	T07 R08 WELS	30
IRONBOUND P	2510	SOMERSET	ALDER BROOK TWP	40
JACKSON P #2	0704	PISCATAQUIS	T03 R11 WELS	12
JACKSON P #1	0684	PISCATAQUIS	T03 R11 WELS	23
JERRY P	2190	PENOBSCOT	T05 R07 WELS	272
JIM P	5054	FRANKLIN	JIM POND TWP	320
JO-MARY L (LOWER)	0984	PISCATAQUIS	T01 R10 WELS	1,910
JO-MARY L (UPPER)	0243	PISCATAQUIS	TA R10 WELS	1,873
JONES P	0172	FRANKLIN	WYMAN TWP	36
JUNIPER KNEE P	0878	PISCATAQUIS	ELLIOTTSVILLE TWP	32
KATAHDIN L	2016	PENOBSCOT	T03 R08 WELS	717
KELLY P	0654	PISCATAQUIS	T02 R12 WELS	60
KENNEBAGO L (BIG)	2374	FRANKLIN	DAVIS TWP	1,700
LANE BROOK P	3664	PENOBSCOT	T06 R06 WELS	33
LANE P	2490	SOMERSET	COMSTOCK TWP	24
LANG P	2542	SOMERSET	PARLIN POND TWP	30
LANG P (LITTLE)	2543	SOMERSET	PARLIN POND TWP	13
LEDGE P	3554	FRANKLIN	SANDY RIVER PLT	6
LINE P	5162	SOMERSET	T05 R20 WELS	7
LOBSTER L	2948	PISCATAQUIS	LOBSTER TWP	3,475
LOGAN P #2	2082	PISCATAQUIS	T02 R09 WELS	20
LONG BOG	2668	SOMERSET	HOLEB TWP	19
LONG L	1892	AROOSTOOK	T12 R13 WELS	1,203
LONG P	2690	SOMERSET	ATTEAN TWP	37
LONG P (LITTLE)	4424	HANCOCK	T10 SD	55
LOON P	2688	SOMERSET	ATTEAN TWP	37
LOON P	0554	PISCATAQUIS	T01 R11 WELS	5
LOST P	2694	SOMERSET	ATTEAN TWP	5
MACHIAS L (THIRD)	1124	WASHINGTON	T42 MD BPP	2,778
MARBLE P	2186	PENOBSCOT	T05 R08 WELS	75
MARY PETUCHE P	2474	SOMERSET	PRENTISS TWP	10
MATHEWS P	2836	PISCATAQUIS	T08 R10 WELS	19
MCKENNA P	0688	PISCATAQUIS	T03 R11 WELS	53
MCKENNEY P	0154	SOMERSET	UPPER ENCHANTED TWP	9
MESSER P	4244	PENOBSCOT	T05 R08 WELS	27
MIDWAY P	3544	FRANKLIN	SANDY RIVER PLT	7
MILLIMAGASSETT L	3004	PENOBSCOT	T07 R08 WELS	1,410
MINISTER L (LITTLE)	0592	PISCATAQUIS	T02 R10 WELS	4
MINISTER P (BIG)	0590	PISCATAQUIS	T02 R10 WELS	15
MOCCASIN P	1590	AROOSTOOK	T14 R08 WELS	32
MOOSELEUK L	1990	PISCATAQUIS	T10 R09 WELS	422
MOOSELOOKMEGUNTIC L	3302	OXFORD	RICHARDSONTOWN TWP	16,300
MOOSE P (BIG)	0334	PISCATAQUIS	MOOSEHEAD JUNCTION TWP	91
MOOSE P (LITTLE)	0336	PISCATAQUIS	MOOSEHEAD JUNCTION TWP	25
MOUNTAIN CATCHER P	4258	PENOBSCOT	T06 R08 WELS	84
MOUNTAIN P	0432	PISCATAQUIS	BEAVER COVE	56
MOUNTAIN VIEW P	0488	PISCATAQUIS	TA R11 WELS	13
MOXIE P	3585	FRANKLIN	TOWNSHIP D	6
MUD P	2340	FRANKLIN	TOWNSHIP 6 N OF WELD	6
MUNSUNGAN L	4180	PISCATAQUIS	T08 R10 WELS	1,415
MURPHY P	0486	PISCATAQUIS	TA R11 WELS	12
MURPHY P (BIG)	0638	PISCATAQUIS	RAINBOW TWP	15

LAKE NAME	LAKE #	COUNTY	PRINCIPAL TOWN NAME	SIZE (ACRES)
MUSCALSEA P (BIG)	4036	SOMERSET	RUSSELL POND TWP	14
MUSCALSEA P (LITTLE)	4034	SOMERSET	RUSSELL POND TWP	11
MUSQUASH L (WEST)	1096	WASHINGTON	T06 R01 NBPP	1,613
NAHMAKANTA L	0698	PISCATAQUIS	T01 R11 WELS	1,024
NICATOUS L	4766	HANCOCK	T40 MD	5,165
NORTH P	9781	AROOSTOOK	T14 R09 WELS	15
NOTCH P	0786	PISCATAQUIS	BOWDOIN COL GR WEST	10
NOTCH P (BIG)	0328	PISCATAQUIS	MOOSEHEAD JUNCTION TWP	12
NOTCH P (LITTLE)	0326	PISCATAQUIS	MOOSEHEAD JUNCTION TWP	10
PAPOOSE P	0338	PISCATAQUIS	MOOSEHEAD JUNCTION TWP	3
PASSAMAGAMET L	0970	PISCATAQUIS	T01 R09 WELS	461
PENOBSCOT L	0339	SOMERSET	DOLE BROOK TWP	1,019
PIERCE P	0086	SOMERSET	PIERCE POND TWP	1,650
PITMAN P	0598	PISCATAQUIS	T02 R10 WELS	20
PLEASANT L	1100	WASHINGTON	T06 R01 NBPP	1,574
POLAND P (UPPER)	PPUP	PISCATAQUIS	T07 R14 WELS	245
POLLY P	0692	PISCATAQUIS	T03 R11 WELS	15
PORTER P	4760	HANCOCK	T03 ND	58
RABBIT P	0366	PISCATAQUIS	ELLIOTTSVILLE TWP	10
RABBIT P	0552	PISCATAQUIS	T01 R11 WELS	10
RAINBOW DEADWATERS	9698	PISCATAQUIS	RAINBOW TWP	58
RAINBOW L	0614	PISCATAQUIS	RAINBOW TWP	1,664
RAINBOW P	4436	HANCOCK	T10 SD	17
REED P (BIG)	2842	PISCATAQUIS	T08 R10 WELS	90
REED P (LITTLE)	2838	PISCATAQUIS	T08 R10 WELS	25
RIPOGENUS P	2910	PISCATAQUIS	T04 R12 WELS	76
ROACH P (FOURTH)	0446	PISCATAQUIS	SHAWTOWN TWP	266
ROACH P (SEVENTH)	0500	PISCATAQUIS	TA R11 WELS	33
ROACH P (SIXTH)	0480	PISCATAQUIS	SHAWTOWN TWP	48
ROBAR P (BIG)	2296	PENOBSCOT	T04 R08 WELS	7
ROBERTS P	5164	SOMERSET	T05 R20 WELS	19
ROCKY P (LITTLE)	0524	PISCATAQUIS	TA R11 WELS	12
ROUND P	2670	SOMERSET	APPLETON TWP	5
ROUND P	1470	AROOSTOOK	T13 R12 WELS	697
ROUND P (LITTLE)	2874	PISCATAQUIS	EAGLE LAKE TWP	58
SADDLEBACK P	3550	FRANKLIN	SANDY RIVER PLT	13
SAWTELLE P	3008	PENOBSCOT	T07 R08 WELS	174
SAWTELLE P (LITTLE)	5778	PENOBSCOT	T07 R08 WELS	10
SCRAGGLY L	4264	PENOBSCOT	T07 R08 WELS	842
SECRET P	0907	PISCATAQUIS	ELLIOTTSVILLE TWP	12
SLAUGHTER P	0690	PISCATAQUIS	T03 R11 WELS	66
SNAKE P	2548	SOMERSET	JOHNSON MOUNTAIN TWP	8
SOCATEAN P #1	4044	SOMERSET	PLYMOUTH TWP	42
SOCATEAN P #2	4046	SOMERSET	PLYMOUTH TWP	14
SPECK P	3288	OXFORD	GRAFTON TWP	9
SPENCER L	5104	SOMERSET	HOBBS TOWN TWP	1,819
SPENCER P	0404	PISCATAQUIS	E MIDDLESEX CANAL GR	980
SPRING L	0170	SOMERSET	T03 R04 BKP WKR	762
SPRING P	2832	PISCATAQUIS	T07 R10 WELS	15
SPRUCE MOUNTAIN P	0466	PISCATAQUIS	TB R11 WELS	20
ST. JOHN P (SECOND)	2432	SOMERSET	T04 R17 WELS	105
ST. JOHN P (THIRD)	2438	SOMERSET	T04 R17 WELS	190
ST. JOHN P (LOWER 1 ST)	2428	SOMERSET	T04 R17 WELS	29
ST. JOHN P (UPPER 1 ST)	2440	SOMERSET	T04 R17 WELS	30
STRATTON P	0618	PISCATAQUIS	RAINBOW TWP	15
SUNDAY P	3316	OXFORD	MAGALLOWAY TWP	30

LAKE NAME	LAKE #	COUNTY	PRINCIPAL TOWN NAME	SIZE (ACRES)
SWIFT RIVER P (LITTLE)	3572	FRANKLIN	TOWNSHIP E	15
TELOS L & ROUND P	2710	PISCATAQUIS	T06 R11 WELS	2,276
THE HORNS P	8601	FRANKLIN	WYMAN TWP	10
TILDEN P	4418	HANCOCK	T10 SD	36
TIM P	2362	FRANKLIN	TIM POND TWP	320
TOBEY P #1	2674	SOMERSET	T05 R07 BKP WKR	35
TOBEY P #2	2676	SOMERSET	T05 R07 BKP WKR	32
TOBEY P #3	2678	SOMERSET	T05 R07 BKP WKR	14
TROUT L	1098	WASHINGTON	KOSSUTH TWP	5
TROUT P	5082	FRANKLIN	LOWELLTOWN TWP	55
TROUT P	3260	OXFORD	MASON TWP	17
TROUT P	0792	PISCATAQUIS	BOWDOIN COL GR WEST	20
TUMBLEDOWN DICK P	0548	PISCATAQUIS	T01 R11 WELS	24
TUMBLWDOWN P	3512	FRANKLIN	TOWNSHIP 6 N OF WELD	9
TUNK L	4434	HANCOCK	T10 SD	2,010
TURTLE P	0952	PISCATAQUIS	LAKE VIEW PLT	81
TWIN (TROUT) PONDS	2102	PISCATAQUIS	T02 R09 WELS	60
TWO MILE P	9765	AROOSTOOK	T16 R13 WELS	12
UMSASKIS L	1896	AROOSTOOK	T11 R13 WELS	1,222
UNNAMED P	9746	SOMERSET	ATTEAN TWP	12
UNNAMED P	8980	SOMERSET	T05 R07 BKP WKR	10
UNNAMED P	8942	SOMERSET	HOLEB TWP	2
UNNAMED P	8934	SOMERSET	ATTEAN TWP	5
UNNAMED P	8416	SOMERSET	COMSTOCK TWP	20
UNNAMED P	7073	PISCATAQUIS	T06 R15 WELS	8
UNNAMED P	7115	SOMERSET	COMSTOCK TWP	15
UNNAMED P (FERNALD)	8868	SOMERSET	PARLIN POND TWP	7
UPPER WILSON P	0410	PISCATAQUIS	BOWDOIN COL GR WEST	940
WADLEIGH P (LITTLE)	2974	PISCATAQUIS	T08 R15 WELS	15
WELMAN P (UPPER)	2482	SOMERSET	PRENTISS TWP	45
WING P	2319	FRANKLIN	SKINNER TWP	10
WOODMAN P	0622	PISCATAQUIS	RAINBOW TWP	6
WOUNDED DEER P	2484	SOMERSET	PRENTISS TWP	12
RIVER NAME		COUNTY	TOWN NAMES	
KENNEBAGO		FRANKLIN	DAVIS AND STETSONTOWN	

APPENDIX E (RESERVED)

APPENDIX F EXPEDITED PERMITTING AREA FOR WIND ENERGY DEVELOPMENT

The following areas, not including areas below the high water mark of coastal wetlands, comprise the expedited permitting area for wind energy development to accomplish the purposes of “An Act to Implement Recommendations of the Governor’s Task Force on Wind Power Development”, P.L. 2007, ch. 661, and “An Act To Improve Regulatory Consistency within the Jurisdiction of the Maine Land Use Planning Commission,” P.L. 2015, ch. 265. The Commission may add and remove areas within its jurisdiction to and from the expedited permitting area for wind energy development in accordance with Title 35-A, Section 3453 and Section 3453-A.

1. Entire townships and plantations. The following entire townships and plantations:

Alder Stream Twp., 07801;	Jim Pond Twp., 07811;
Argyle Twp., 19801;	Johnson Mountain Twp., 25829;
Bald Mountain Twp., T2 R3, 25805;	Kibby Twp., 07812;
Baring Plt., 29040;	Kingman Twp., 19808;
Barnard Twp., 21030;	Lake View Plt., 21120;
Batchelders Grant Twp., 17805;	Macwahoc Plt., 03360;
Benedicta Twp., 03050;	Madawaska Lake Twp, 03889;
Berry Twp, 29818;	Mattamiscontis Twp., 19810;
Blake Gore, 25811;	Mayfield Twp., 25835;
Blanchard Twp., 21040;	Milton Twp., 17812;
Brookton Twp., 29801;	Misery Twp., 25836;
Centerville Twp., 29080;	Moro Plt., 03430;
Chase Stream Twp., 25816;	Mount Chase, 19450;
Chester, 19100;	Nashville Plt., 03440;
Connor Twp., 03802;	North Yarmouth Academy Grant Twp.,
Cox Patent, 03803;	03807;
Cross Lake Twp., 03899;	Osborn, 09230;
Cyr Plt., 03140;	Oxbow North Twp., 03500;
Dudley Twp., 03804;	Parkertown Twp., 17814;
Dyer Twp., 29803;	Perkins Twp., 07818;
E Twp., 03160;	Perkins Twp. Swan Island, 23801;
East Moxie Twp., 25821;	Prentiss Twp., T4 R4 NBKP, 25843;
Fletchers Landing Twp., 09804;	Prentiss Twp., T7 R3 NBPP, 19540;
Forkstown Twp., 03805;	Reed Plt., 03540;
Fowler Twp., 29807;	Saint Croix Twp., 03808;
Garfield Plt., 03220;	Saint John Plt., 03570;
Glenwood Plt., 03230;	Sandy Bay Twp., 25850;
Grand Falls Twp., 19250;	Sandy River Plt., 07170;
Grindstone Twp., 19802;	Scopan Twp., 03810;
Hamlin, 03250;	Seboeis Plt., 19550;
Hammond, 03260;	Silver Ridge Twp., 03809;
Herseytown Twp., 19803;	Sinclair Twp., 03898;
Hibberts Gore, 15801;	Squaretown Twp., 25854;
Hopkins Academy Grant Twp., 19804;	Summit Twp., 19812;
Indian Stream Twp., 25828;	T1 R5 WELS, 03816;

T1 R6 WELS, 19815;	T4 R3 WELS, 03820;
T10 R3 WELS, 03829;	T6 R6 WELS, 19829;
T10 R6 WELS, 03830;	T7 R5 WELS, 03821;
T10 SD, 09806;	T7 R6 WELS, 19832;
T11 R3 NBPP, 29817;	T8 R3 NBPP, 29815;
T11 R4 WELS, 03833;	T8 R3 WELS, 03822;
T13 R5 WELS, 03856;	T8 R4 NBPP, 29816;
T14 R5 WELS, 03867;	T8 R5 WELS, 03823;
T14 R6 WELS, 03868;	T8 R6 WELS, 19835;
T15 R5 WELS, 03879;	T9 R3 WELS, 03824;
T15 R6 WELS, 03880;	T9 R4 WELS, 03825;
T16 MD, 09807;	T9 R5 WELS, 03826;
T16 R5 WELS, 03890;	T9 SD, 09805;
T16 R6 WELS, 03891;	TA R2 WELS, 03813;
T18 MD BPP, 29819;	TA R7 WELS, 19814;
T19 ED BPP, 29820;	TC R2 WELS, 03814;
T19 MD BPP, 29821;	TD R2 WELS, 03815;
T2 R4 WELS, 03817;	Unity Twp., 11801;
T2 R8 NWP, 19817;	Upper Molunkus Twp., 03811;
T2 R9 NWP, 19819;	Van Buren Cove Twp., 03897;
T22 MD, 09808;	Washington Twp., 07827;
T3 Indian Purchase Twp., 19806;	Webbertown Twp., 03812;
T3 R3 WELS, 03818;	Webster Plt., 19600;
T3 R4 WELS, 03819;	Williamsburg Twp., 21827;
T3 R9 NWP, 19823;	and Winterville Plt., 03680;

2. Portions of townships and plantations. The following portions of townships and plantations:

that portion of Adamstown Twp., 17801, north of Route 16;

Bald Mountain Twp., T4 R3, 25806, excluding areas of Boundary Bald Mountain above 2,700 feet in elevation;

Chain of Ponds, 07803, an approximately 1,578.4-acre parcel, bounded by the eastern town line at latitude 45.373, longitude -70.625484, proceeding westerly to latitude 45.370087, longitude -70.63231 then to latitude 45.368156, longitude -70.645478 where it intersects the 2,400-foot contour, proceeding along the 2,400-foot contour westerly and then northerly to the intersection of the 2,400-foot contour to the northern town line, following the town line eastward and then southward until reaching the beginning point, latitude 45.373, longitude -70.625484;

the portion of Coplin Plt., 07040, north of Route 16;

the portion of Dallas Plt., 07050, north of Route 16;

the portion of Ebeemee Twp., 21853, east of Route 11;

the portion of Kossuth Twp., 29808, north of Route 6 and a portion south of Route 6, beginning at a point 45.406587° latitude, -67.97342° longitude on the boundary between Carroll Plantation and Kossuth Township approximately 1,500 feet southeast of Route 6 along the township line, and following the town boundary southeast approximately 4,000 feet to 45.39584° latitude, -67.970263° longitude, then proceeding east approximately 7,500' to 45.395571° latitude, -67.940835° longitude, then proceeding north approximately 3,200 feet to 45.404206° latitude, -67.940674° longitude, then proceeding southwest approximately 935 feet to 45.403537° latitude, -67.944191° longitude, then proceeding north approximately 1,000 feet to 45.406328° latitude, -67.944987° longitude, then proceeding east approximately 7,300 feet to the point of beginning, 45.406587° latitude, -67.97342° longitude;

the portion of Lang Twp., 07813, north of Route 16;

- the portion of Lincoln Plt., 17160, north of Route 16;
- the portion of Long A Twp., 19809, east of Route 11;
- the 487.5-acre area above the 2,040-foot elevation around Green Top in Lynchtown Twp., 17810;
- the portions of Misery Gore Twp., 25837, north of and administered as part of Misery Twp. and Parlin Pond Twp. pursuant to P & S.L. 1991, ch. 51, §2;
- the portion of Molunkus Twp., 03806, beginning at a point on the line between Molunkus (a.k.a. Township A Range 5 WELS) and Macwahoc Plantation being located S 1° 40' 53" E, a tie distance of 208.77 feet from an iron rod located at coordinates N: 16,578,625.02 usft E: 1,819,527.31 usft; Thence S 71° 39' 16" W, a distance of 3,783.03 feet to a point on the easterly sideline of the Benedicta Road, so called; Thence continuing S 71° 39' 16" W, crossing said Benedicta Road a distance of 283.96 feet to a point; Thence S 14° 04' 18" W, a distance of 4,456.43 feet; Thence S 44° 41' 42" W, a distance of 15,391.59 feet; Thence S 47° 01' 09" W, a distance of 1,202.86 feet to an angle point having coordinates N: 16,561,052.23 usft E: 1,802,884.24 usft; Thence S 63° 11' 34" W, a distance of 2,580 feet, more or less, to a point on the southerly line of Molunkus and the southerly line of Aroostook County; Thence S 77° 00' W, more or less, by and along said southerly line of Molunkus, a distance of 840 feet, more or less, to a point located 200.00 feet from, as measured perpendicular to, the last described course; Thence N 63° 11' 34" E, at all times 200.00 feet northwesterly of and parallel to, the southeasterly line of the parcel described herein, a distance of 3365 feet, more or less, to a point having coordinates N: 16,561,217.92 usft E: 1,802,768.68 usft; Thence N 47° 01' 09" E, at all times 200.00 feet northwesterly of and parallel, a distance of 1,170.39 feet to a point; Thence N 44° 41' 42" E, at all times 200.00 feet northwesterly of and parallel to, the southeasterly line of the parcel described herein, a distance of 15332.78 feet to a point; Thence N 14° 04' 18" E, at all times 200.00 feet northwesterly of and parallel to, the southeasterly line of the parcel described herein, a distance of 4,511.59 feet to a point; Thence N 71° 39' 16" E crossing said Benedicta Road, at all times 200.00 feet northwesterly of and parallel to, the southeasterly line of the parcel described herein, a distance of 338.62 feet to an iron rod found on the easterly sideline of said Benedicta Road; Thence continuing N 71° 39' 16" E, a distance of 3,898.14 feet to said iron rod on the line between Molunkus and Macwahoc Plantation; Thence S 1° 40' E, more or less, by and along said line between Molunkus and Macwahoc Plantation, a distance of 209 feet, more or less, to the point of beginning;
- the portion of Rockwood Strip T2 R1 NBKP, 25845, south of Little Brassua Lake and Brassua Lake;
- the portion of Sandwich Academy Grant Twp., 25849, south of Moose River, Little Brassua Lake and Brassua Lake;
- Skinner Twp., 07822, an approximately 193.4-acre parcel that follows the ridge to Kibby Mountain, bounded on the east and west by the 2,820-foot contour, on the south by the town line where it intersects the 2,820-foot contour and on the north by a line drawn from latitude 45.4121, longitude -70.54402 to latitude 45.41587, longitude -70.5349 intersecting the 2,820-foot contour;
- the portion of Soldiertown Twp., T2 R7 WELS, 19811, east of the East Branch Penobscot River;
- the portion of T1 R8 WELS, 19816, south of Millinocket Lake;
- the portion of T1 R9 WELS, 21833, southeast of Ambajejus Lake;
- T24 MD BPP, 29822, excluding a one mile buffer around Mopang Stream;
- T25 MD BPP, 29823, an approximately 558.5-acre parcel in the Bear Brook and Black Pond area, bounded by a point along the southern town line, latitude 44.805142, longitude -67.741067, and proceeding in a counterclockwise direction through the following points, latitude 44.808871, longitude -67.744217, latitude 44.812645, longitude -67.750877, latitude 44.816887, longitude -67.76346, latitude 44.817639, longitude -67.768806, latitude 44.817596, longitude -67.770188, latitude 44.817259, longitude -67.771089, latitude 44.816282, longitude -67.771687, latitude 44.815068, longitude -67.771704, latitude 44.810286, longitude

-67.767988, latitude 44.802482, longitude -67.759738 intersecting the town line, proceeding easterly along the southern town line to beginning point latitude 44.805142, longitude -67.741067;

the portion of T3 R7 WELS, 19821, east of the Seboeis River and East Branch Penobscot River; the portions of T4 Indian Purchase Twp., 19807, area northeast of North Twin Lake and south of Route 11;

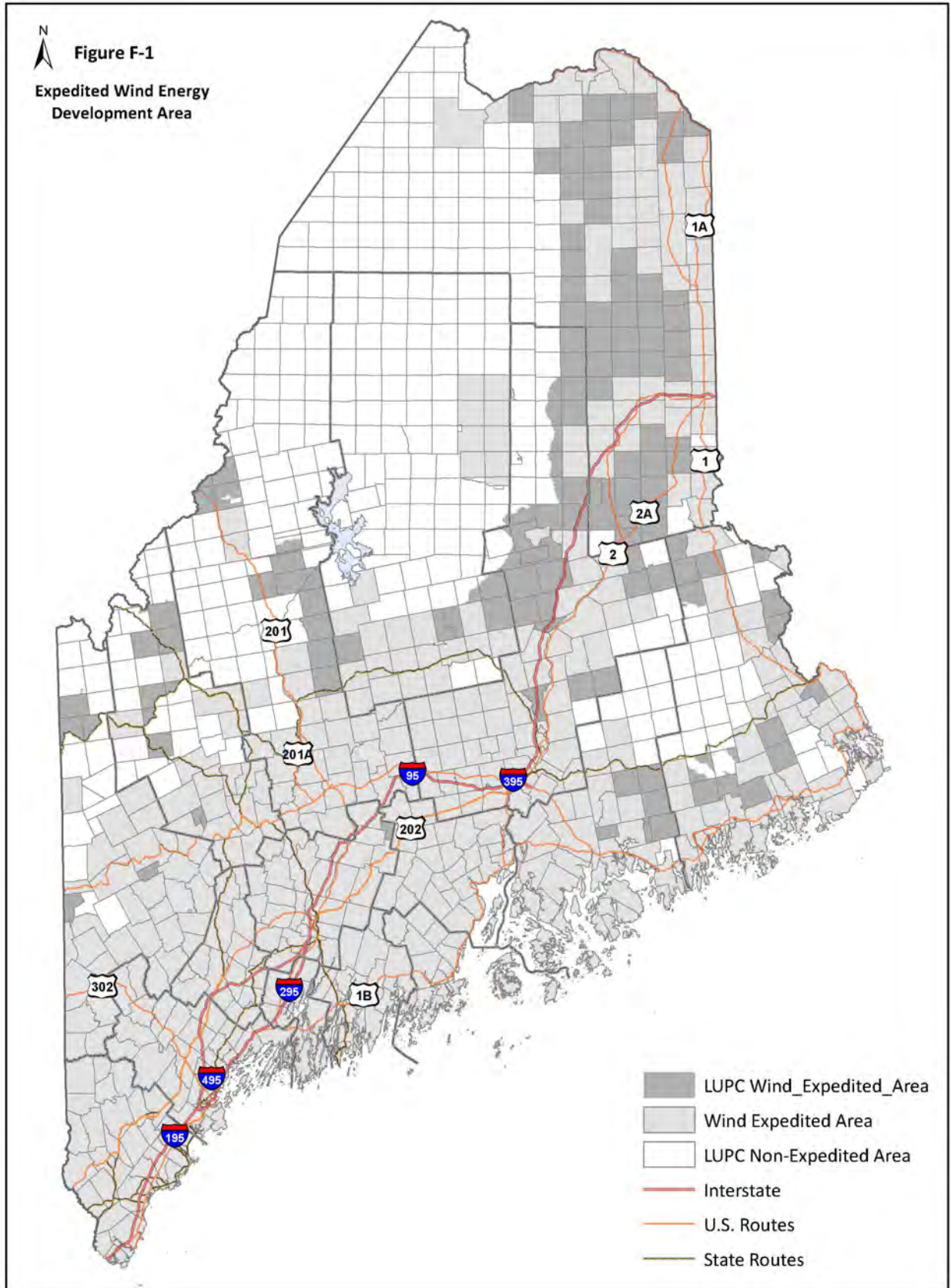
the portion of T4 R7 WELS, 19824, east of the Seboeis River;

the portion of T4 R9 NWP, 21845, east of Route 11;

the portion of T5 R7 WELS, 19827, east of the Seboeis River; and

the portion of T6 R7 WELS, 19830, east of the Seboeis River; and

3. **Coastal islands in unorganized and deorganized area.** All islands located in waters subject to tidal influence that are within the unorganized and deorganized areas of the State.



APPENDIX G DESIGNATED AREAS OF CULTURAL OR SPECIAL SIGNIFICANCE (DACSS)

1. **Designated Area of Cultural or Special Significance (DACSS).** Areas of cultural or special significance may be designated by the Commission to facilitate expansion, reconstruction or replacement, or relocation of structures that provide significant public benefits to the surrounding community. A DACSS is intended to include discrete geographic areas with significant cultural or other special features. Once included in a DACSS, a structure may be expanded in accordance with Section 10.11,C,1,c, reconstructed or replaced in accordance with Section 10.11,C,2,f, and relocated in accordance with Section 10.11,C,3, of the Commission’s rules. Designation of an area as a DACSS does not preclude expansion, reconstruction or replacement, or relocation of legally existing non-conforming structures in accordance with other applicable provisions of Section 10.11.
 - a. **Designation Criteria.** The Commission shall designate an area of cultural or special significance upon finding that a proposed area meets the following criteria:
 - (1) The proposed area is an iconic location containing features that convey a sense of time or place to residents or visitors;
 - (2) The proposed area is a geographically definable area or neighborhood composed of a finite group of related features that have a special character, historical interest, or aesthetic value; and
 - (3) The proposed area provides a significant public benefit, per Section 1,b.
 - b. **Contributing Factors.** When evaluating whether an area proposed for designation provides a significant public benefit, as required by Appendix G, Section 1,c the Commission shall consider the factors listed below. The Commission may find an area provides a significant public benefit even if the area does not include features satisfying all of the factors set forth in (1) through (4) below, provided the evidence offered for a particular factor or subset of factors is compelling. In applying these factors, the Commission may consider, among other evidence, documentation such as published books, magazines, academic writings, or newspaper articles; other historic records identifying the value of the feature or area; and visual depictions such as postcards, images or paintings. The Commission also may receive testimony by persons with special knowledge about applicable factors.
 - (1) **Cultural:** Buildings, improvements or other features that exemplify or reflect a group of people linked together by shared values, traditional uses, beliefs, and historical associations;
 - (2) **Historic:** Represents a distinct historical period, type, style, region, or way of life; is the site of an important historical event, or is associated with historic events that have made a meaningful contribution to the nation, state, or community; or represents a specific business or use, which either once was common but now is rare, or continues to have historical value as it currently operates.
 - (3) **Architectural or Engineering:** Exemplifies a particular architectural style or way of life, construction materials or engineering methods used to build features, or

embodies elements of outstanding attention to architectural or engineering design, detail, material, or craftsmanship.

- (4) **Neighborhood or Geographic Setting:** The proposed area is in a unique location, or represents an established and familiar visual feature of the community that draws residents and visitors, or structures or features within the designated area include singular physical characteristics.

c. Procedural Requirements. In accordance with Chapter 4 of the Commission's Rules, Rules of Practice, Section 4.06, any person may petition the Commission for designation of an area as a DACSS. Petitions must be in writing and identify the area proposed for designation, specify the purpose of the proposed designation, and explain how the designation conforms with the criteria set forth in Appendix G, Section 1,a. In addition to notification requirements described in Section 4.06(5) upon receiving a petition to designate a proposed area the Commission shall notify: (i) property owners within the area proposed as a DACSS; (ii) the municipality or plantation where the designated area is proposed; (iii) the county if located in an unorganized township; (iv) appropriate state and federal agencies, to be determined by the Commission; and (v) tribal governments. Upon designation of an area as a DACSS, a description of the designated area, its purpose, and the facts substantiating the Commission's finding that the applicant satisfied the criteria in Appendix G, Section 1,a shall be listed in Appendix G, Section 2 of this chapter.

d. Removal of Designation. Upon petition in accordance with Chapter 4 of the Commission's Rules, Rules of Practice, Section 4.06, the Commission may remove a designation of a DACSS when the Commission finds that the DACSS no longer meets the purpose of the DACSS listed in Appendix G, Section 2, of this chapter or no longer provides a significant public benefit based on the factors in Appendix G, Section 1,b,(1) through (4).

2. Designated Areas. The following areas have been designated as a DACSS in accordance with the procedure described in Appendix G, Section 1.

a. Grand Lake Stream Plantation Boathouses and Waterfront. Grand Lake Stream Plantation is a place where fishing, boating, access to water, and a strong connection to the past are key components of its identity and culture and very important to its residents, as well as the large number of visitors that come to the community each year. It is a place to which people from all over the world travel for its culture, its beauty, and importantly, the "old-time feeling" that makes it special.

(1) **Designation Purpose.** The purpose of listing the Grand Lake Stream shorefront as a designated area is to provide the community an opportunity to sustain the boathouses located on the iconic southern shoreline of West Grand Lake that symbolize key components of its culture, and history, and that convey a tranquil "old-time feeling" for the people that live in and visit the community, and contribute to Grand Lake Stream Plantation's quality of life and sense of place.

(2) **Geographic Boundaries.** The designated area includes all structures within its boundaries that are legally existing as of the effective date of this rule amendment. The designated area specifically includes the two public boat launches and excludes the man-made dam and any portion thereof, and is composed of the following two sub-areas:

- (a) **Western sub-area.** Extends northerly and westerly from the intersection of the driveway for the public boat launch and centerline of Shaw Road, along the

centerline of Shaw Road, to the point where Shaw Road crosses the inlet into Hatchery Cove; and extends on the lake side of the road, to the extent necessary to include all legally existing structures.

- (b) Eastern sub-area. Extends southerly from the end of Canal Street, along the centerline of Canal Street, to the center of the intersection of Canal Street and the driveway leading to the dam; and extends on the lake side of the road, to the extent necessary to include all legally existing structures.
- (3) Facts Substantiating Designation of Grand Lake Stream Plantation Boathouses and Waterfront as a Designated Area of Cultural or Special Significance.
- (a) The historic boat houses that have existed along the shoreline at the southern end of West Grand Lake since the early 1900's are part of what makes the area described in Appendix G, Section 2,a iconic. For residents and visitors, the boathouses reflect the community, its culture, and their shared value of traditional uses and an "old-time feeling."
 - (b) The boathouses in Hatchery Cove are representative of the Maine Guiding Tradition and a specific way of life. They originally sheltered steamboats used to transport sportsmen and other visitors to remote lodges located around the lake. They have since been used to store boats for visiting sportsmen, including the famous Grand Laker Canoe, which was designed and built locally for conditions commonly found on the lake. Additionally, the boathouses have been used by property and business owners to supply camps and lodges located around the lake, and by the Maine Forest Service as a base for firefighting operations. Although privately owned and used, the community associates the boathouses with their past. One resident commented that all good stories start with "we were down at the boathouses"
 - (c) The area described in Appendix G, Section 2,a,(1) is a unique geographic location and represents an established and familiar visual feature of the community that draws residents and visitors, and contributes to a high quality of life for residents and economic activity from tourism. Residents talk of children in the area, against the wishes of their parents, jumping from the boathouses into the lake. Fishermen visit the area to check the flow in the river and to launch their boats on the lake. Hikers, ATV riders, paddlers and snowmobilers use the area to access the many nearby recreational trails. Families and school groups come to swim and picnic. The community holds events at the waterfront such as fireworks displays and activities during the annual Grand Lake Stream Folk Arts Festival. Photographers have a single place where they can capture many of the important elements that contribute to the culture and sense of place that locals and visitors experience in the community. Residents describe this area as Grand Lake Stream's "working waterfront," and as the "core of the town."